



Grand Banks 42 Classic 'Yesterday'

LOA (m):	13.17 m
Beam (m):	4.29 m
Draft (m):	1.27 m
Engines:	2x 430hp Cummins
Cabins:	2
Homeport:	Mariteam Yachting
Price:	€ (not set)

"Yesterday" is with its hull number 1541 one of the youngest Grand Banks 42s ever built. Her current and first owner had her carried out during the construction with a stylish and light interior with, among other things, a high-gloss varnished white wooden ceiling. Her 430pk Cummins engines provide a top speed of 21 knots. The exterior varnish was completely replaced in September 2018 and the whole exterior polished. With this work the "Yesterday" is ready to start a new adventure with her new owner.

Main specifications

Model:	42 Classic
LOA (m):	13.17 m
Beam (m):	4.29 m
Draft (m):	1.27 m
Year:	2004
Hull Material:	GRP
Cabins:	2
Sleeping places:	5
Number of main engine(s):	2
Power of main engine(s) (hp):	430
Brand of main engine(s):	Cummins
Price:	€ (not set)
VAT status:	Paid
HIN number:	MY-GNDD1541F404

General

Name :	Yesterday
Shipyard:	Grand Banks
Air draft (m):	3.99
CE-category:	A
Displacement (t):	17
Hull material:	GRP
Deck material:	GRP
Superstructure material:	GRP
Deck finish:	Teak
Window material:	Single

Fuel tank (Litre and material):	2271 steel
Freshwater Tank (Liter and material):	931 Stainless steel
Black water tank (Litre and material):	189Liter, Plastic
Antifouling (Year):	2018
Maximum speed (Kn):	21
Cruising speed (Kn):	9

Accommodation

Stove:	Gaggenau VG232-132f & VC230-112, 2x GAS, 2x ELEK.
Refrigerator:	MDC 110
Freezer:	MDC 110
Interior finish:	Teak
Single berths:	3
Double bed:	1
Cabins:	2
Toilets:	2x Tecma, elek
Showers:	2x
Combi oven/microwave:	Gaggenau EM203-130

Machinery

Port engine (Brand, type, hp, gearbox):	Cummins, 6CTA-8.3, 430 PK, ZF 280- 1A
Engine hours port engine:	2230
Star engine (Brand, type, hp, gearbox):	Cummins, 6CTA-8.3, 430 PK, ZF 280- 1A
Engine hours starboard engine:	2225
Main engines control (Brand and type):	Kobelt



Drive (Shaft, IPS, Jet):	Shaft
Shaft lubrication:	Tides marine shaft seal
Prop (Number of blades, material):	4 blad, brons
Generator (Brand, type, Kw):	Onan, MDKAV-5635761, 7KW
Generator hours:	225
Bowthruster (Brand, type, elec/hyd):	Sidepower, SP125, Elec
Sternthruster (Brand, type, elec/hyd):	Sidepower, SP95, Elec
Electrical bilge pump:	3x rule 200 gph
Manual bilge pump:	1x Whale gulper
Water pressure pump (Brand, model):	Shurflo, 181-201
Hot water system:	Seaward, s-1950, 75 Liter
Heating system (brand, model, type):	Eberspaecher D8L-C
Trim system:	Bennett trim tabs, model 4809
Macerator pump:	Sealand T12VDC
Steering system:	Hydraulisch
Deckwash:	1x

Electrical system

DC system (V) AC system (V):	12V/230V
Battery charger (V/W/Amp):	Mastervolt 12V/60A

Safety system

Gas detector:	1x
Fire alarm:	1x

Navigation system

Compass:	Ritchie
Gps plotter:	Raymarine RL80C
Radar screen:	Raymarine RL80C
Radar :	Raymarine
Depth meter:	Raymarine ST60
Log:	Raymarine ST60
VHF:	Raymarine
Autopilot:	Raymarine ST7001
Rudder indicator:	VDO

Equipment

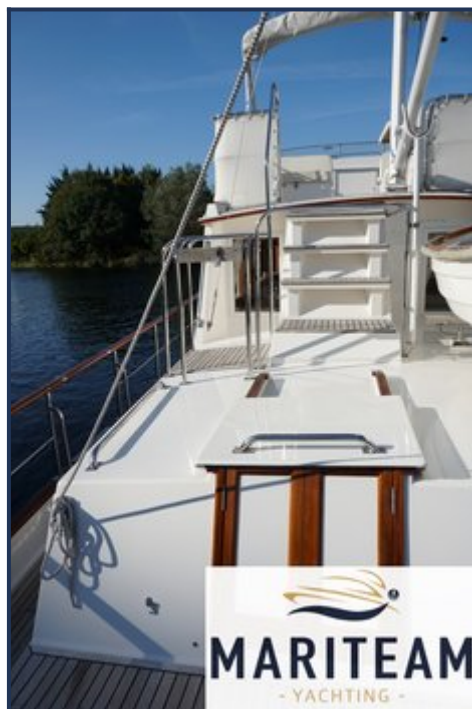
Anchor:	1x
Windlass:	Lofrans Tigres 1200W
Horn:	Compressor



































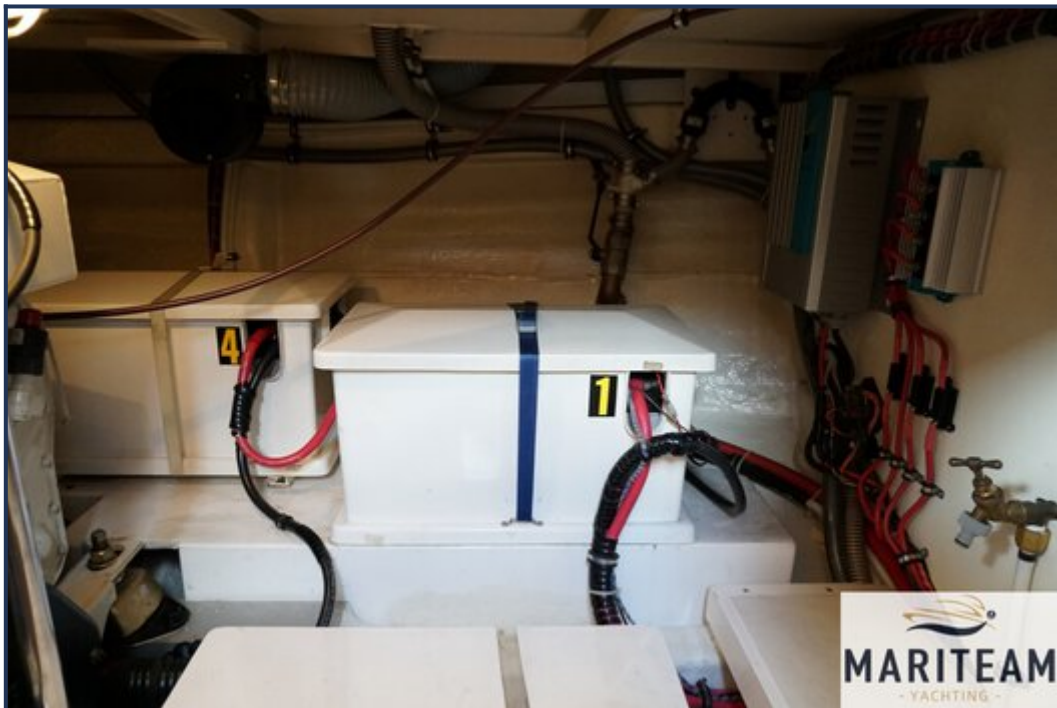


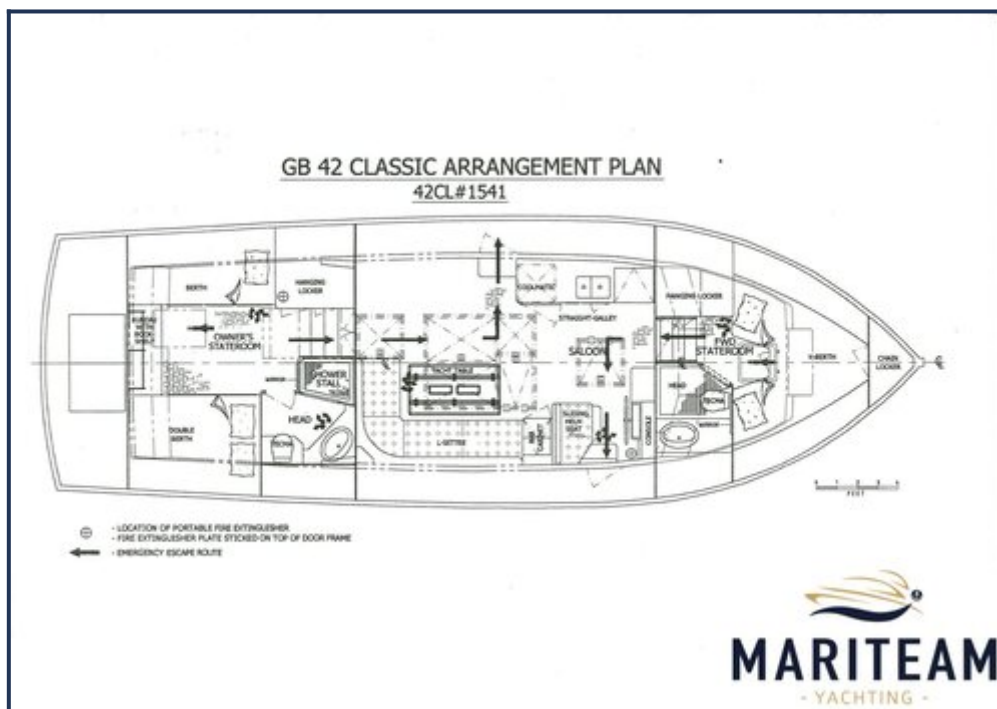












These particulars are given in good faith as supplied but cannot be guaranteed and cannot be used for contracts.