



MARITEAM

- YACHTING -



Grand Banks 46 Classic 'Pegasus'

LOA (m):	14.35 m
Beam (m):	4.50 m
Draft (m):	1.33 m
Shipyard:	Grand Banks
Year built:	1989
Engines:	2x 210hp Caterpillar
Cabins:	2
Homeport:	The Netherlands
Price:	€ (not set)

"Pegasus" is a great and tough family ship with a lot of privacy by the two completely separate 2-person cabins in front and aft with each their own bathroom with toilet and shower.

Equipped with nice extras like a Onan generator, Kabola central heating, hydraulic mast ironing installation, enlarge bathing platform with outdoor shower, hydraulic trim panels, window covers and updated navigation equipment.

"Pegasus" is equipped with comfortable options such as Kabola central heating, generator and a hydraulic mast lowering installation.

Furthermore, the current owner has demonstrably invested a lot in maintenance and renewal in the last

MARITEAM YACHTING

Ceresweg 20-B, 8938 BG Leeuwarden 📍 The Netherlands 📞 Phone +31 (0) 582 889254

info@mariteamyachting.nl 📧 www.mariteamyachting.nl

two years, including:

- Extended engine service including new starter motors (July 2020)
- New batteries (2019)
- New Siemens hob and Perlgrim combi oven (April 2020)
- New Victron Quattro 12/3000 battery charger/inverter and battery monitor (May 2020)
- New Simrad navigation system (Feb 2020)
- 4G router (Feb 2020)
- Stripping the underwater hull and applying a completely new antifouling system (Aug 2019)
- New propeller shaft bearings (Dec 2020)
- Rubbing and polishing hull (Dec 2020)
- Replacing window rubbers (Dec 2020)
- Remove and completely relacquering of transom, door and caprail on transom (May 2021)

The ship is built in 1989 and is covered in a water shed and is therefore in an excellent condition due to little UV, in addition, it has always been a freshwater boat.

Main specifications

Model:	46 Classic
LOA (m):	14.35 m
Beam (m):	4.50 m
Draft (m):	1.33 m
Year:	1989
Hull Material:	GRP
Cabins:	2
Sleeping places:	4
Number of main engine(s):	2
Power of main engine(s) (hp):	210
Brand of main engine(s):	Caterpillar
Price:	€ (not set)
VAT status:	Paid
Draft (m):	1.33
HIN number:	GNDF0069F989

General

Name :	Pegasus
Shipyard:	Grand Banks
Type:	46 Classic
Length overall (m):	14.35
Length waterline (m):	13.65
Beam (m):	4.5
Air draft (m):	4.35
Year built:	1989
CE-category:	NA

Displacement (t):	21
Hull material:	GRP
Deck material:	GRP
Superstructure material:	GRP
Deck finish:	Teak
Window material:	Single
Fuel tank (Litre and material):	2271 steel
Freshwater Tank (Liter and material):	1044 steel
Antifouling (Year):	2019
Maximum speed (Kn):	13
Cruising speed (Kn):	9

Accommodation

Stove:	Siemens Schott Ceran (2020)
Microwave:	1x Daewoo
Oven:	Pelgrim combi (2020)
Refrigerator:	1x Iyebherr
Freezer:	1x Iyebherr
Interior finish:	Teak
Washing machine:	1x Candy
Single berths:	2x
Double bed:	1x
Cabins:	2x
Toilets:	2x electric
Showers:	2x

Machinery

Port engine (Brand, type, hp, gearbox):	Caterpillar, 3208, 210 hp. Twin Disc
Main engines control (Brand and type):	Morse
Drive (Shaft, IPS, Jet):	Shaft
Shaft lubrication:	Water lubricated
Prop (Number of blades, material):	3 blade, brons
Star engine (Brand, type, hp, gearbox):	Caterpillar, 3208, 210 hp. Twin Disc
Generator (Brand, type, Kw):	Onan, 6.5 KW
Bowthruster (Brand, type, elec/hyd):	Vetus, Elec
Electrical bilge pump:	3x Rule
Manual bilge pump:	1x
Water presure pump (Brand, model):	Double proportional
Hot water system:	Boiler, 40L
Heating system (brand, model, type):	Kabola B12, central heating
Trim system:	Electric
Steering system:	Mechanical
Engine hours engine 1:	2253
Engine hours engine 2:	2244
Generator hours:	634

Electrical system

House battery (Number of battery,type, total Amp, year):	2x 250Ah semi traction (combination house-startbattery)+ 1x generator battery
Start battery (Number of battery,type, total Amp, year):	2x 230Ah
Bowthruster battery (Number of battery,type, total Amp, year):	4x 140Ah
DC system (V) AC system (V):	12V/220V

Battery charger (V/W/Amp):

Mastervolt

Navigation system

Helm position one:

Salon

Compass:

2x Danforth

Gps plotter:

2x Simrad GO12

Radar :

Simrad

Depth meter:

Simrad IS20

Log:

Simrad IS20

Wind meter :

Simrad IS20

VHF:

Simrad RS40-B + Simrad HS40 (fly)

Autopilot:

Simrad NAC-3 + simrad (fly)

Rudder indicator:

2x Simrad IS20

Equipment

Windlass:

1x electric

Search light:

Flybridge

Horn:

1x





















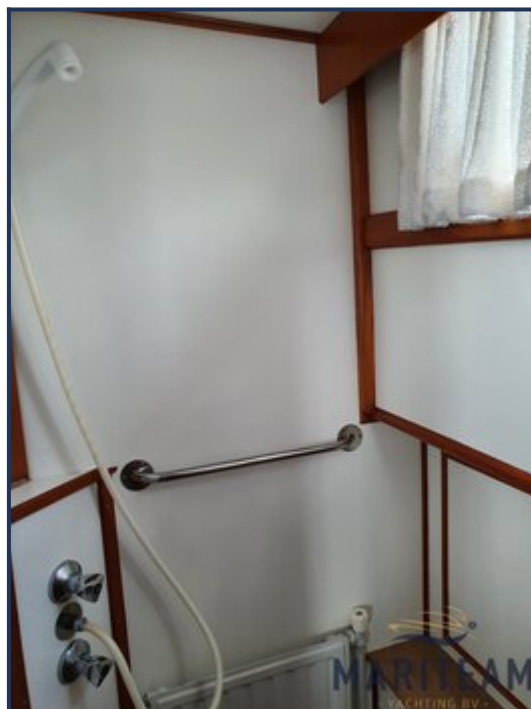




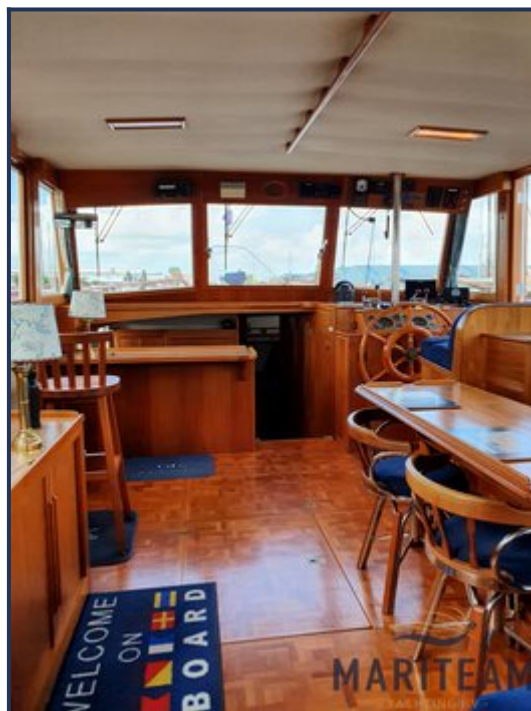






















These particulars are given in good faith as supplied but cannot be guaranteed and cannot be used for contracts.