



MARITEAM

- YACHTING -



MARITEAM
YACHTING

American Tug 41 'Anit'

| | |
|------------|----------------------|
| LOA (m): | 13.90 m |
| Beam (m): | 4.80 m |
| Draft (m): | 1.5 m |
| Engines: | 1x 500hp Volvo Penta |
| Cabins: | 2 |
| Homeport: | Salesoffice, Heeg |
| Price: | € 395,000 |

This well-maintained American Tug, built in 2009, combines robust build quality with a warm, luxurious feel and excellent sailing characteristics. The vessel features a spacious and well-thought-out layout with two comfortable cabins. The owner's cabin is fitted with a freestanding double bed and an en-suite bathroom. The guest cabin features two spacious single beds and a second en-suite bathroom, which also serves as a practical day-head for guests. Propulsion is provided by a powerful 500 pk Volvo Penta D9-500 diesel engine, with just 922 operating hours. In addition, the American Tug is fitted with a Northern Lights 7 kW generator, so you can enjoy all the on-board facilities even when out of port.

MARITEAM YACHTING

De Draei 29, 8621 CZ Heeg 📍 The Netherlands 📞 Phone +31 (0) 582 889254
info@mariteamyachting.nl 🌐 www.mariteamyachting.nl



MARITEAM

- YACHTING -

MARITEAM YACHTING

De Draei 29, 8621 CZ Heeg 📍 The Netherlands 📞 Phone +31 (0) 582 889254

info@mariteamyachting.nl 📧 www.mariteamyachting.nl

Main specifications

| | |
|-------------------------------|-----------------|
| Model: | 41 |
| LOA (m): | 13.90 m |
| Beam (m): | 4.80 m |
| Draft (m): | 1.5 m |
| Year: | 2010 |
| Hull Material: | GRP |
| Cabins: | 2 |
| Sleeping places: | 4 |
| Number of main engine(s): | 1 |
| Power of main engine(s) (hp): | 500 |
| Brand of main engine(s): | Volvo Penta |
| Price: | € 395,000 |
| VAT status: | VAT paid |
| HIN number: | US-TQG41040A910 |

General

| | |
|--|---------------------------|
| Name : | ANIT |
| Shipyard: | Tomco Marine Group U.S.A. |
| CE-category: | CE-B |
| Cruising speed (Kn): | 6.5 kn |
| Maximum speed (Kn): | 16.5 kn |
| Air draft (m): | 4.87 |
| Displacement (t): | 13.6T |
| Fuel tank (Litre and material): | 2425L, Aluminium |
| Freshwater Tank (Liter and material): | 800L |
| Black water tank (Litre and material): | 227L |

| | |
|--------------------------|------------------|
| Hull material: | GRP |
| Superstructure material: | GRP |
| Deck material: | GRP |
| Deck finish: | Syntetic teak |
| Interior finish: | Brazilian Cherry |
| Window material: | Enkel |

Accommodation

| | |
|--------------------------------------|----------------------------|
| Cabins: | 2x |
| Double bed: | 1x |
| Single berths: | 2x |
| Showers: | 2x |
| Toilets: | 2x Vacüm |
| Heating system (brand, model, type): | Eberspächer |
| Stove: | Princess 3-burner electric |
| Combi oven/microwave: | Dometic Combi |
| Oven: | Princess |
| Microwave: | Dometic |
| Refrigerator: | Nova Kool |
| Freezer: | Nova Kool |
| Ice cubes maker: | 1x U-line |
| Washing machine/Dryer: | Indesit 1200 Combi |
| Vacuum cleaner system: | InterVac |
| TV: | SONY |
| Radio: | JVC |

Machinery

| | |
|--|-------------------------------------|
| Main engines control (Brand and type): | Volvo Penta electric engine control |
| Motor: | Volvo Penta D9-500 |
| Motor hours: | 922 (07/2026) |
| Steering system: | Hydraulic |
| Drive (Shaft, IPS, Jet): | Shaft drive |
| Shaft lubrication: | Water lubricated |
| Generator (Brand, type, Kw): | Northern Light 7KW 220V |
| Generator hours: | 484 (07-2026) |
| Bowthruster (Brand, type, elec/hyd): | Sidepower 8hp, Twin prop |
| Sternthruster (Brand, type, elec/hyd): | Sidepower 12V |
| Water pressure pump (Brand, model): | Jabsco |
| Hot water system: | 45L boiler |
| Oil change system: | Electric |

Electrical system

| | |
|--|-----------------------------------|
| DC system (V) AC system (V): | 12V/220V |
| Battery charger (V/W/Amp): | Mastervolt Mass Combi 12/2000/100 |
| Inverter (V/W/Amp): | Mastervolt Mass Combi 12/2000/100 |
| House battery (Number of battery,type, total Amp, year): | 4x Vetus SMF Marine 12V/230ah |
| Generator battery (Number of battery,type, total Amp, year): | AGM 12v/80ah |
| Bowthruster battery (Number of battery,type, total Amp, year): | On house batteries |
| Sternthruster battery (Number of battery,type, total Amp, year): | On house batteries |

Safety system

| | |
|--------------------------------|--------------|
| Electrical bilge pump: | 3x Rule Mate |
| Fire extinguisher engine room: | Fireboy |
| High water alarm: | Rule |
| Search light: | Golight |
| Horn: | Electric |

Navigation system

| | |
|-------------------|------------------------------|
| Compass: | Ritchie |
| Gps plotter: | Raymarine C120 W |
| Radar screen: | Raymarine C120 W |
| Radar : | Raymarine |
| Autopilot: | Raymarine st8002 |
| Rudder indicator: | Raymarine st8002 |
| Log: | Raymarine ST70 + Volvo Penta |
| Depth meter: | Raymarine ST70 |
| VHF: | Raymarine Ray218E |
| AIS: | present |
| Camera: | Aft on sun cover |

Equipment

| | |
|---------------|--------------------------|
| Tender crane: | Steelhead WD800 |
| Windlass: | Lofrans Tigres 12V/1200W |
| Deckwash: | present |
| Deck shower: | present |

































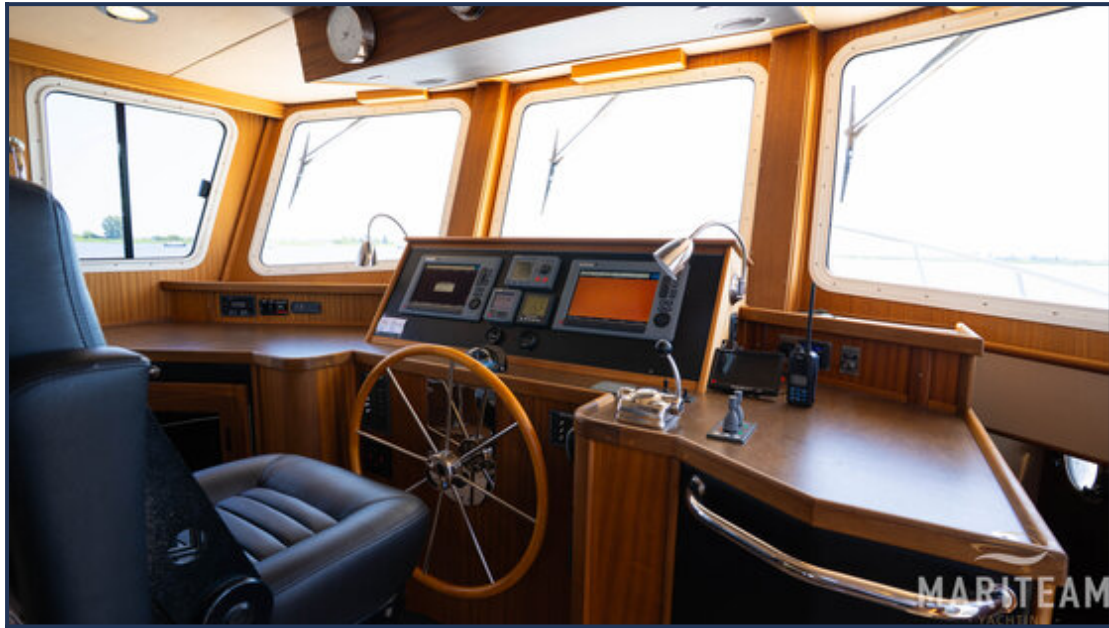






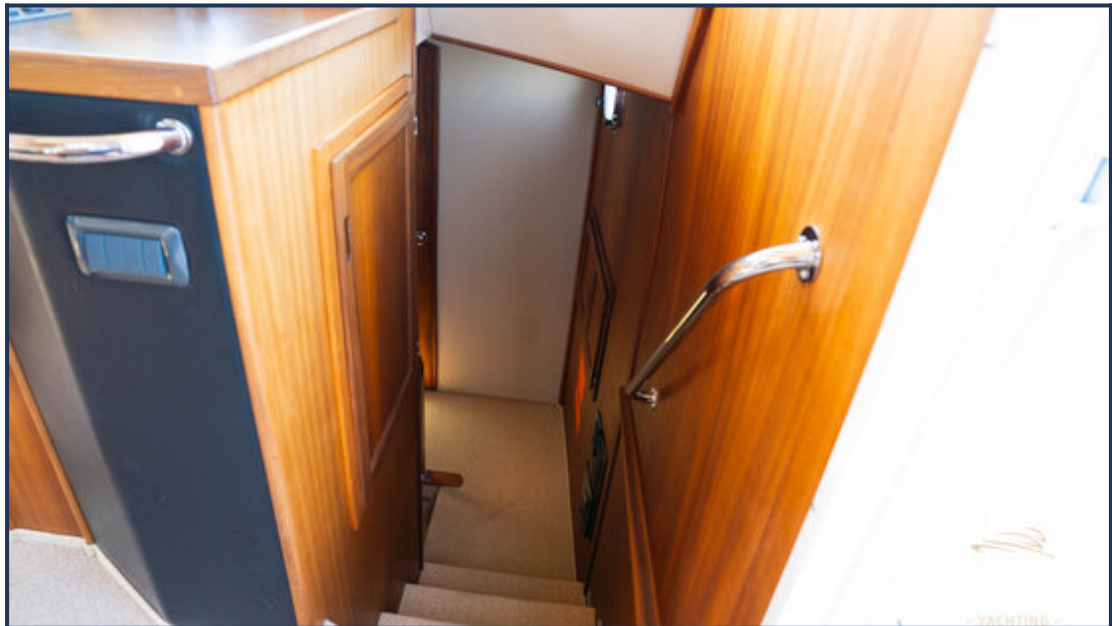








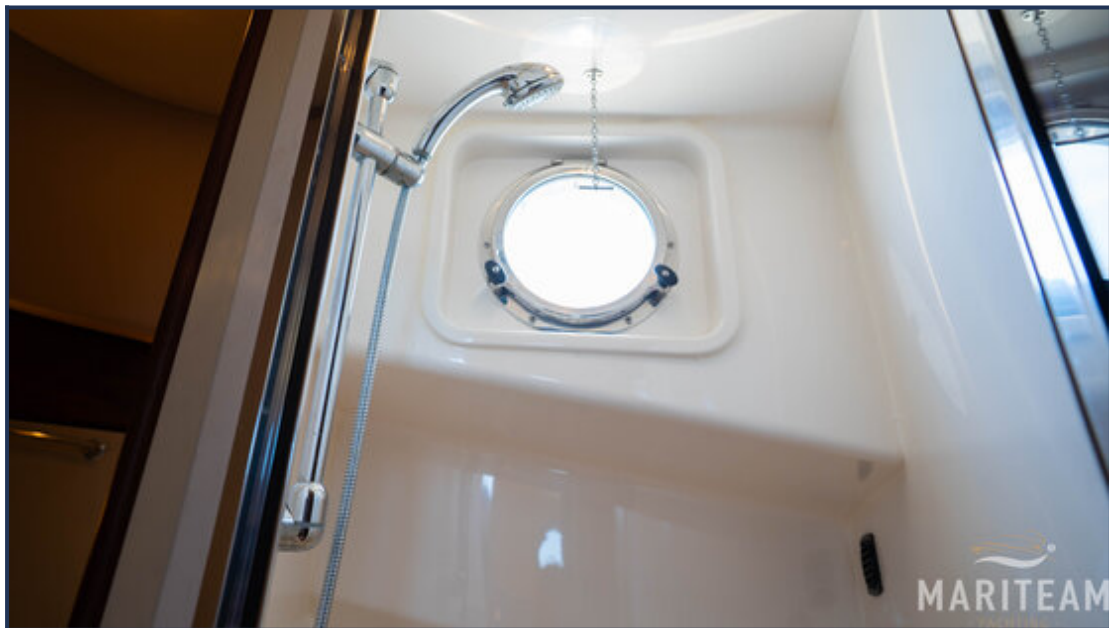


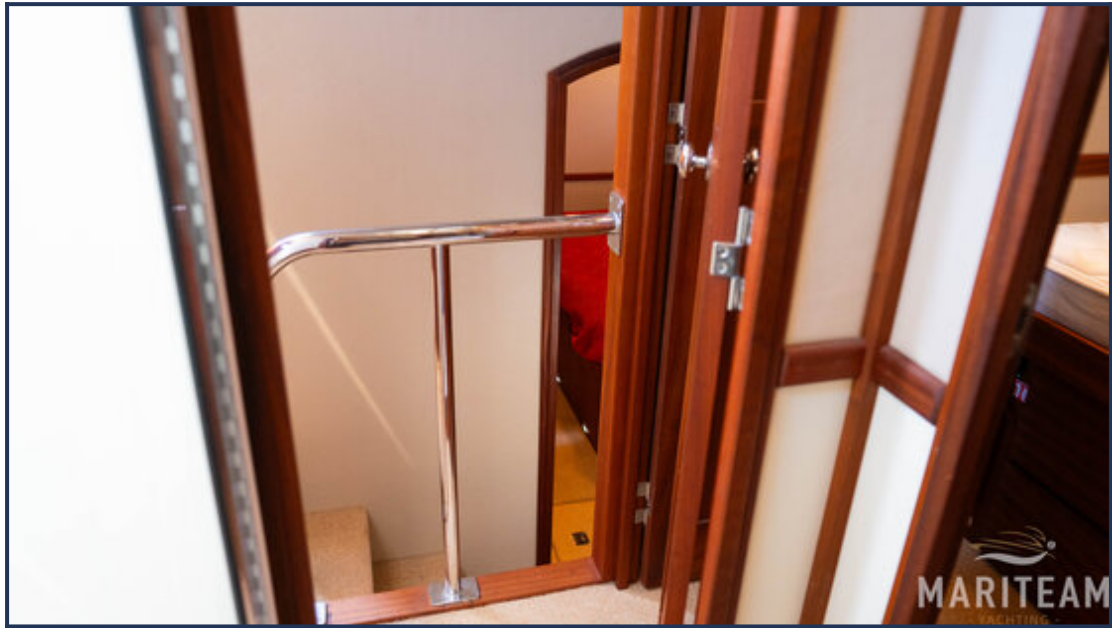






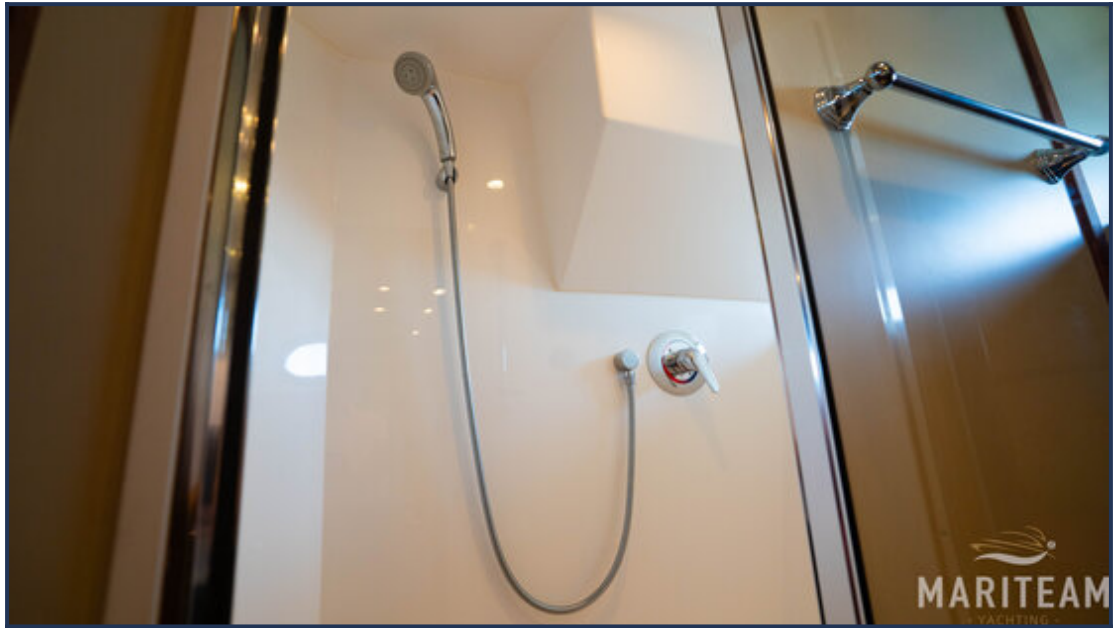


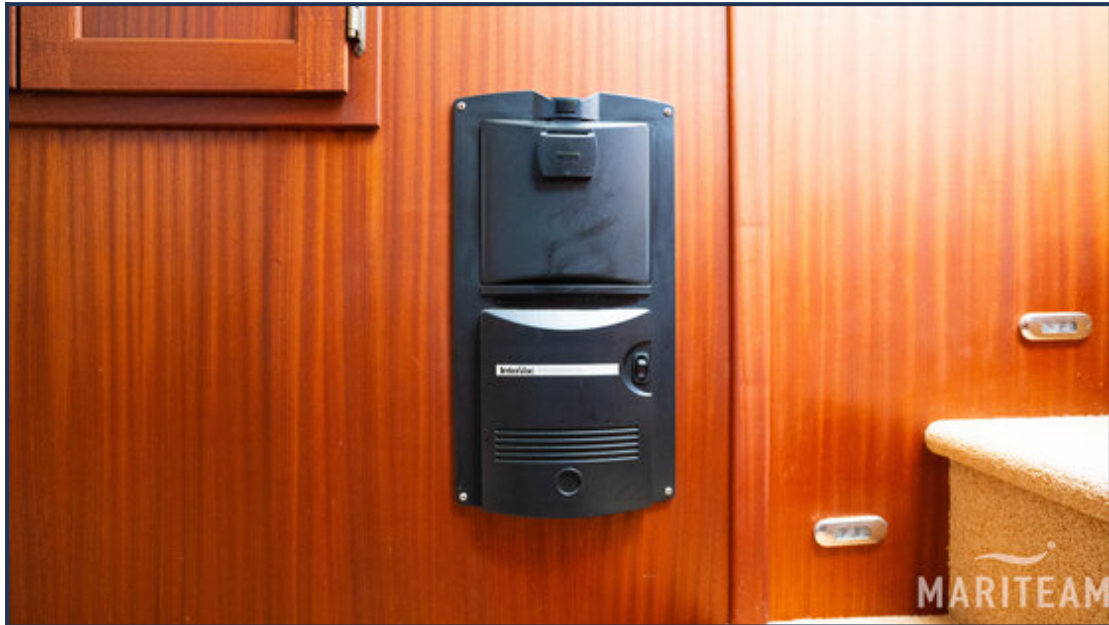












These particulars are given in good faith as supplied but cannot be guaranteed and cannot be used for contracts.