



MARITEAM

- YACHTING -



Grand Banks 49 Motoryacht 'ELIAS'

LOA (m):	15.39 m
Beam (m):	4.70 m
Draft (m):	1.55 m
Engines:	2x 210hp Caterpillar
Cabins:	4
Homeport:	Heeg, Netherlands
Price:	€ 225,000

Thanks to its spacious layout, the Grand Banks 49 Motoryacht offers every possibility for extended stays on board or even permanent living.

Some highlights of the 'ELIAS' include:

- 4 spacious cabins
- 3 en-suite bathrooms
- Webasto diesel hot-air heating
- Flexi-teak decks
- Stainless steel railing

MARITEAM YACHTING

De Draei 29, 8621 CZ Heeg 📍 The Netherlands 📞 Phone +31 (0) 582 889254

info@mariteamyachting.nl 📧 www.mariteamyachting.nl

Main specifications

Model:	49 Motoryacht
LOA (m):	15.39 m
Beam (m):	4.70 m
Draft (m):	1.55 m
Year:	1988
Hull Material:	GRP
Cabins:	4
Sleeping places:	8
Number of main engine(s):	2
Power of main engine(s) (hp):	210
Brand of main engine(s):	Caterpillar
Price:	€ 225,000
VAT status:	EU Paid
HIN number:	GNDE0071K788

General

Name :	ELIAS
Shipyard:	American Marine Singapore LTD
Cruising speed (Kn):	7kn
Maximum speed (Kn):	13kn
Air draft (m):	8 meter max. / 4.67 meter min.
Displacement (t):	27.2t
Fuel tank (Litre and material):	3785L, Steel
Freshwater Tank (Liter and material):	1892L, Aluminum
Hull material:	GRP
Superstructure material:	GRP

Deck material:	GRP
Deck finish:	Flexi teak
Interior finish:	Teak
Window material:	Single safety glass
Window ventilation:	Tilt and sliding windows

Accommodation

Cabins:	4x
Double bed:	4
Showers:	3
Toilets:	3x, electric
Heating system (brand, model, type):	Webasto diesel hot air
Stove:	Seaward Products 3-burner Ceramic
Oven:	Princess 220v
Microwave:	Candy CMG 9323 DW
Refrigerator:	Isotherm 12v
Freezer:	compartment in fridge
Washing machine:	Bosch Serie 6 Eco Silence
TV:	LG, 32inch
Radio:	Panasonic CQ-DP171 U

Machinery

Main engines control (Brand and type):	Morse dual lever
Port engine (Brand, type, hp, gearbox):	Caterpillar 3208NA, 211hp, Twin Disc
Engine hours port engine:	3365 (05/2026)

Star engine (Brand, type, hp, gearbox):	Caterpillar 3208NA, 211hp, Twin Disc
Engine hours starboard engine:	3352 (05/2026)
Steering system:	Hydraulic
Drive (Shaft, IPS, Jet):	Shaft drive
Shaft lubrication:	Water lubricated
Generator (Brand, type, Kw):	Onan 17.5Kw
Bowthruster (Brand, type, elec/hyd):	Vetus
Water pressure pump (Brand, model):	Jabsco
Hot water system:	40L Nautic Boiler
Fuel polishing system:	Racor Pre-filter

Electrical system

DC system (V) AC system (V):	12V/220V
Battery charger (V/W/Amp):	Mastervolt Dakar Combi 12v/2500-100 + Victron Blue Power Charger
Inverter (V/W/Amp):	Mastervolt Dakar Combi 12/2500-100
House battery (Number of battery,type, total Amp, year):	2x Varta 12v/240Ah
Start battery (Number of battery,type, total Amp, year):	2x Tab 12v 180Ah
Generator battery (Number of battery,type, total Amp, year):	SB-start battery
Bowthruster battery (Number of battery,type, total Amp, year):	Wilco 12/180Ah

Safety system

Electrical bilge pump:	4x Rule
High water alarm:	present

Fire alarm:	present
Horn:	Electric

Navigation system

Compass:	Raymarine
Gps plotter:	Raymarine E120 W Hybrid Touch
Radar screen:	Raymarine E120 W Hybrid Touch
Radar :	Raymarine
Autopilot:	Raymarine + handheld remote
Rudder indicator:	VDO
Depth meter:	Raymarine ST70
VHF:	Raymarine
AIS:	Raymarine

Equipment

Anchor:	20kg Pool anchor
Windlass:	Electric Ideal Windless Co.
Deckwash:	present
Deck shower:	Hot and Cold















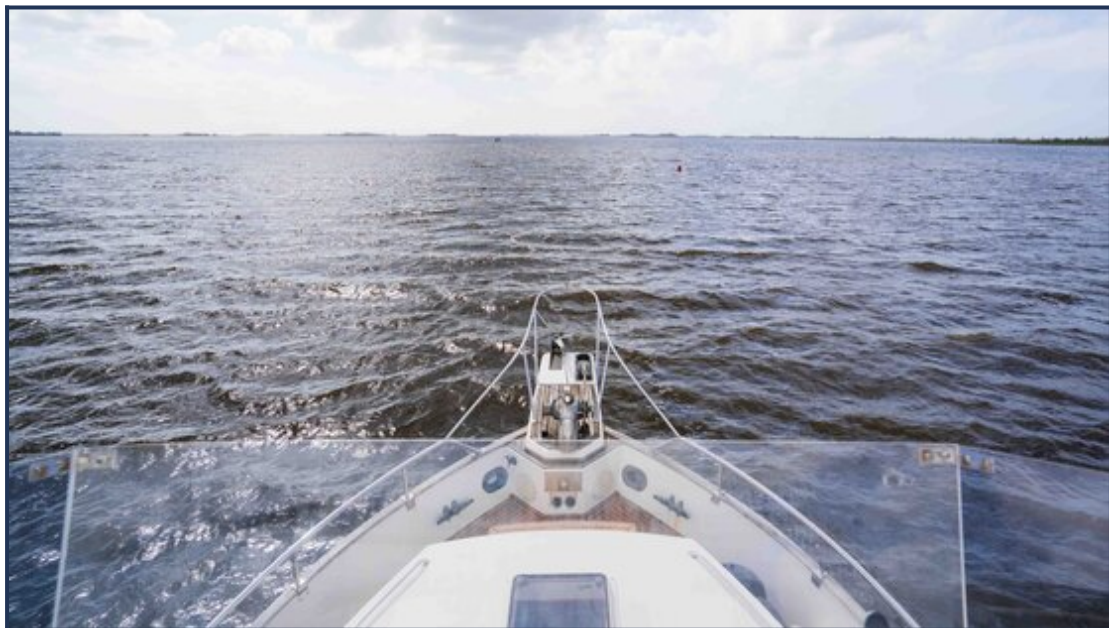


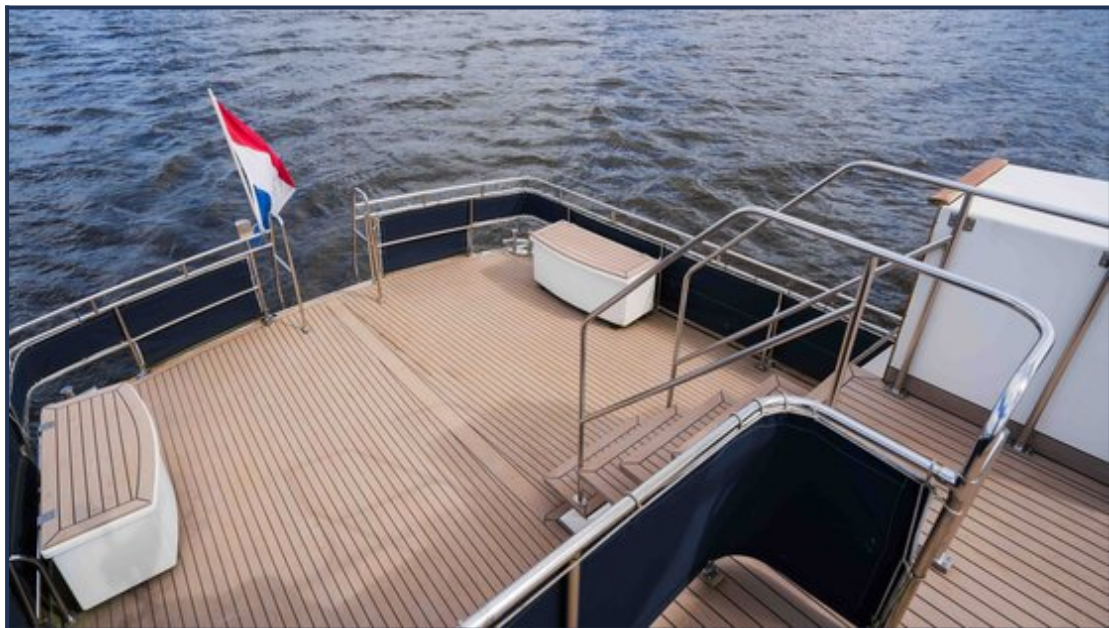




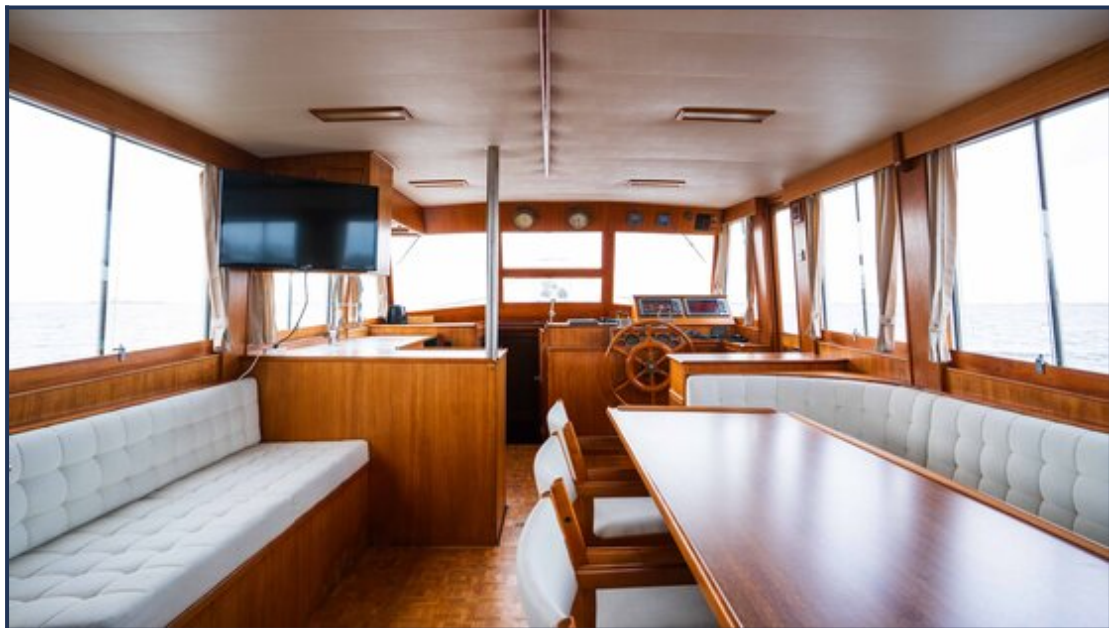










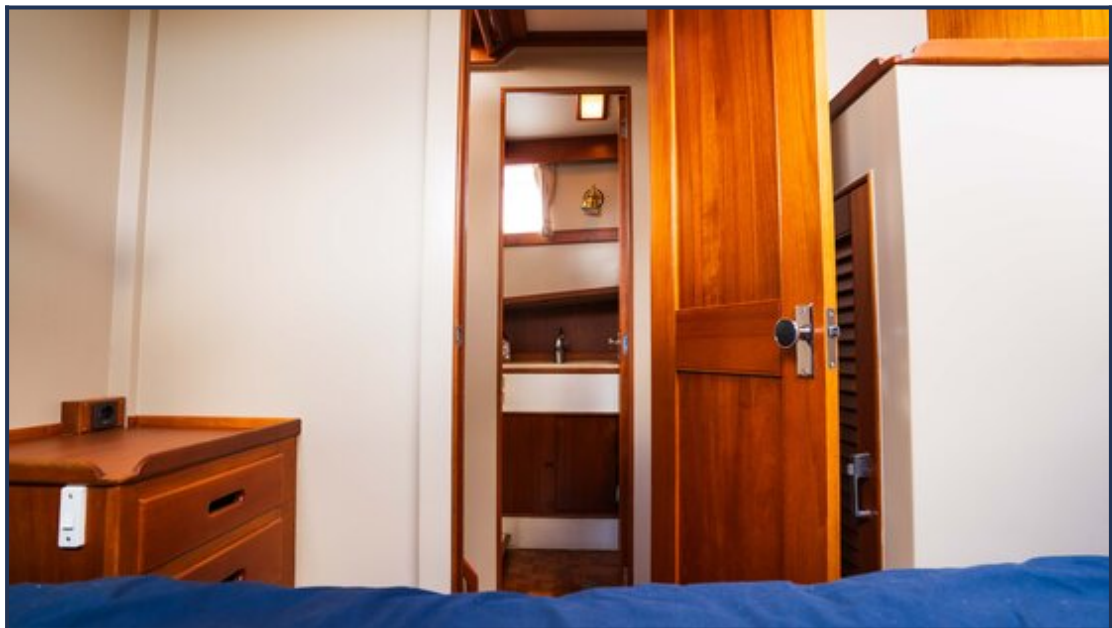


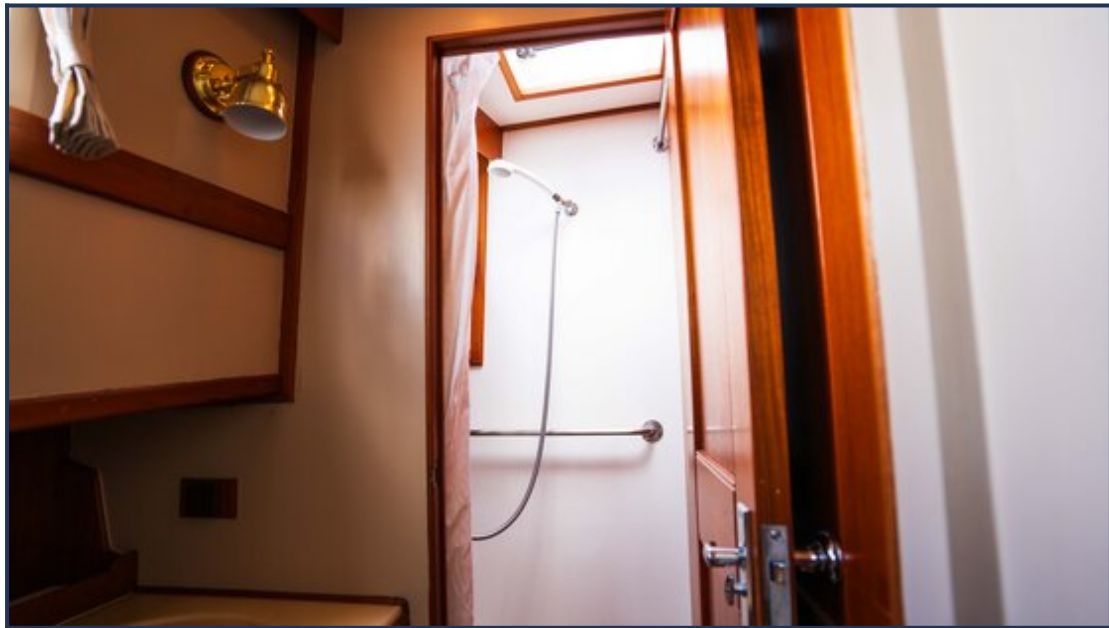


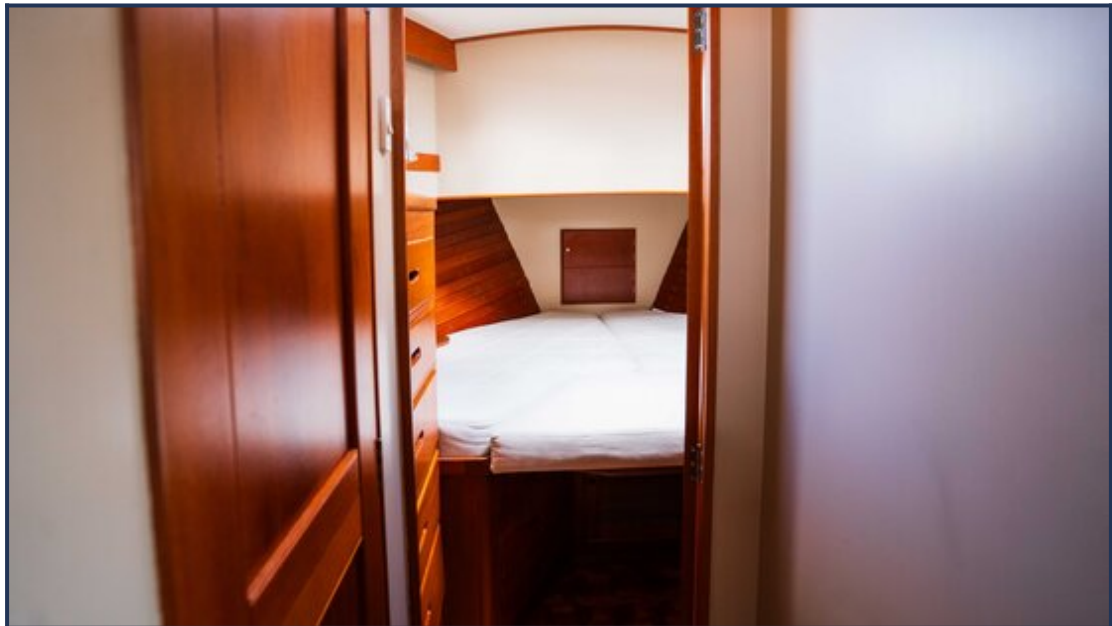


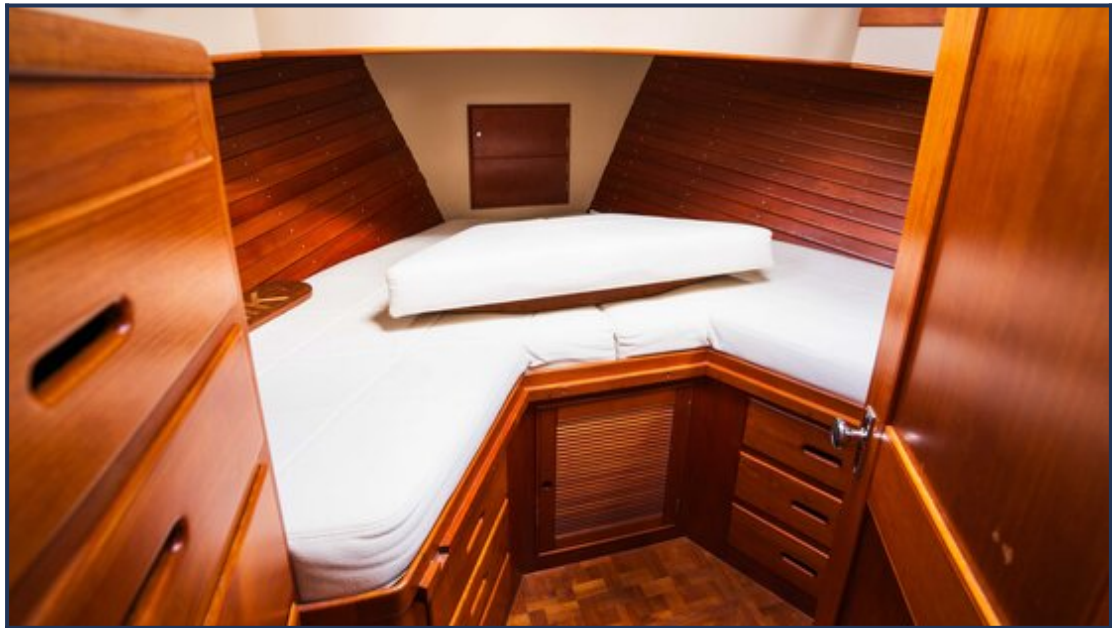
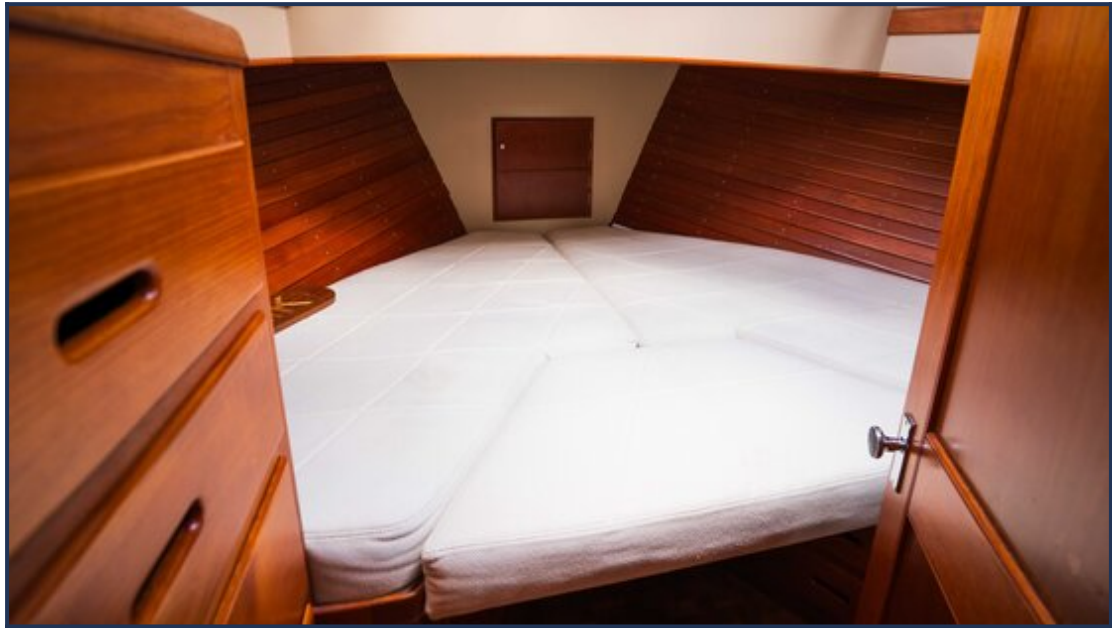


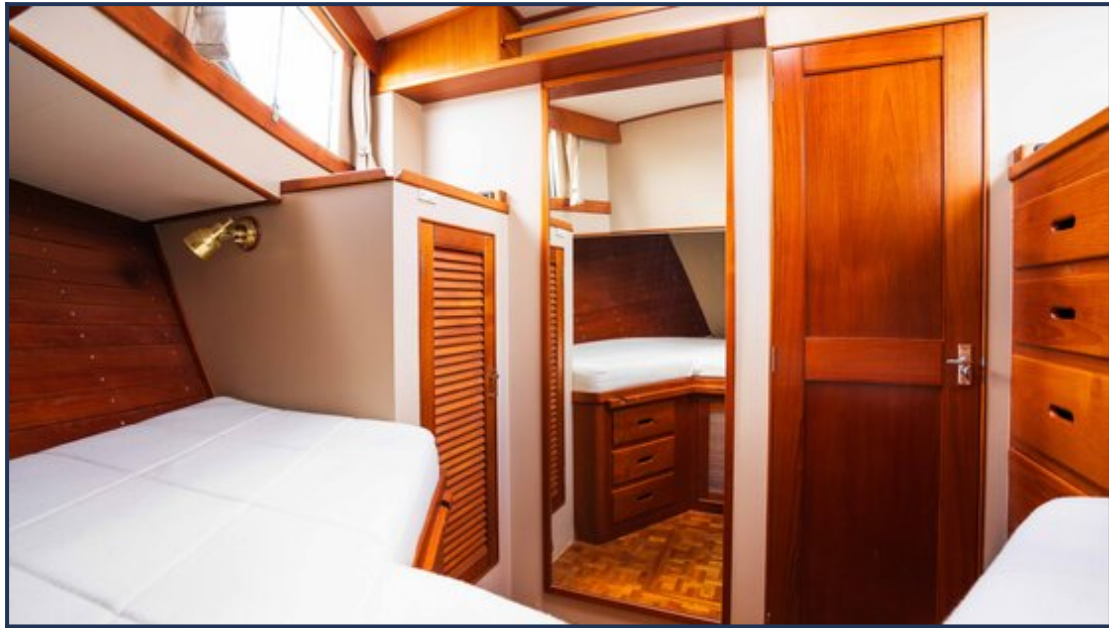


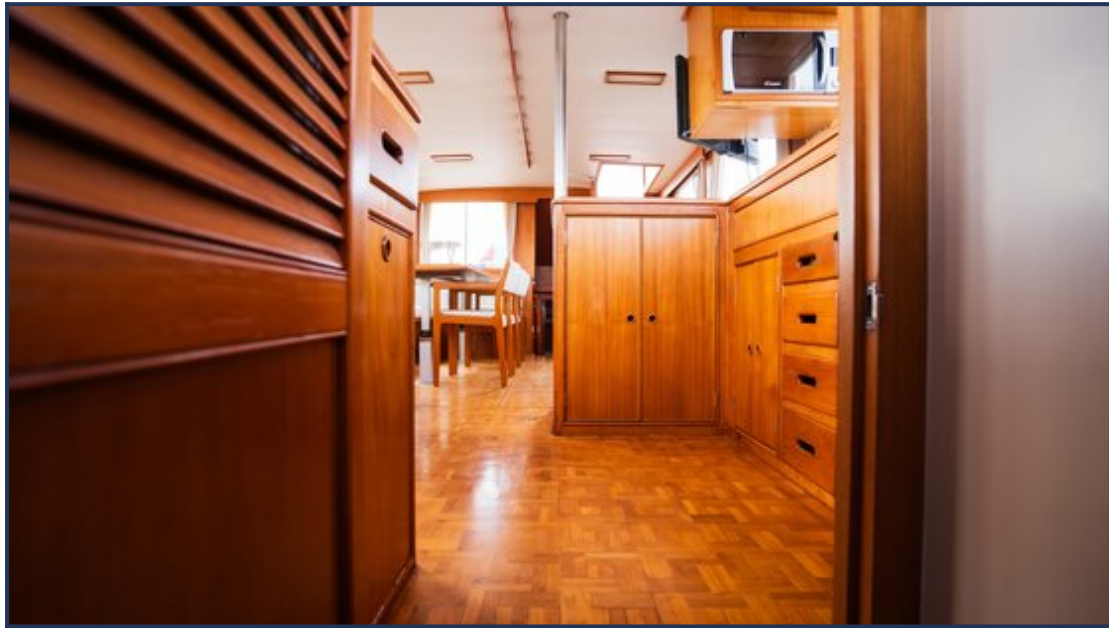


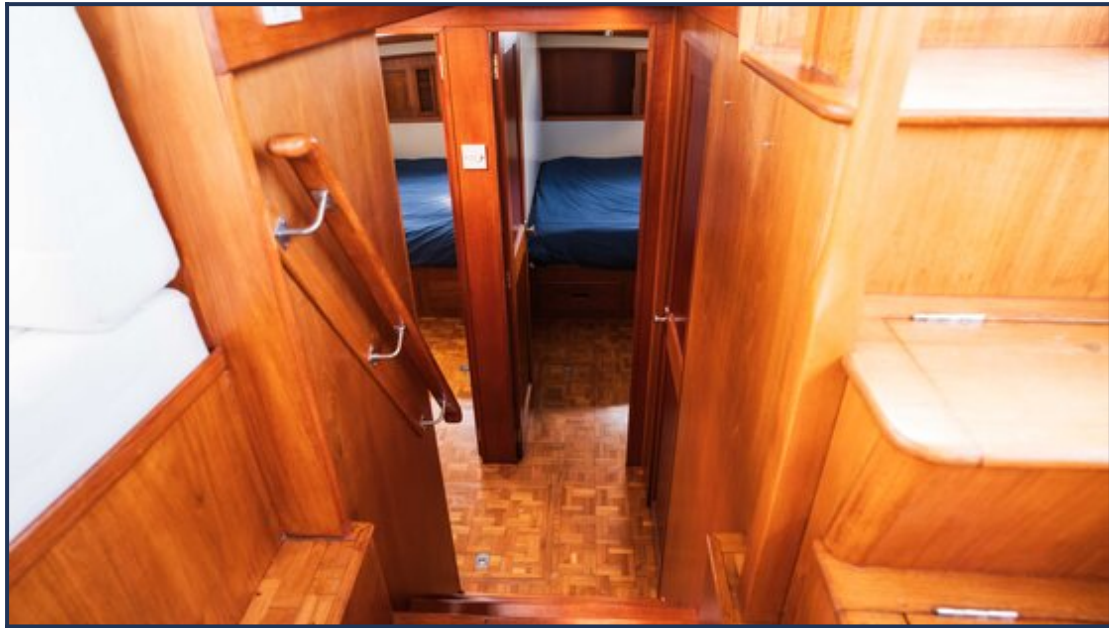


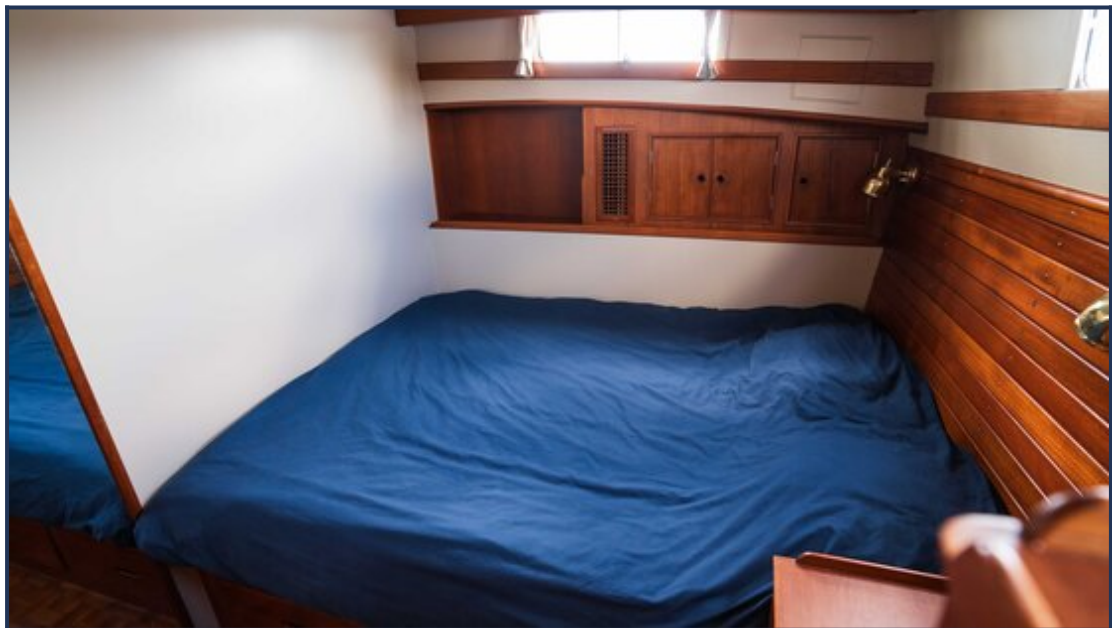


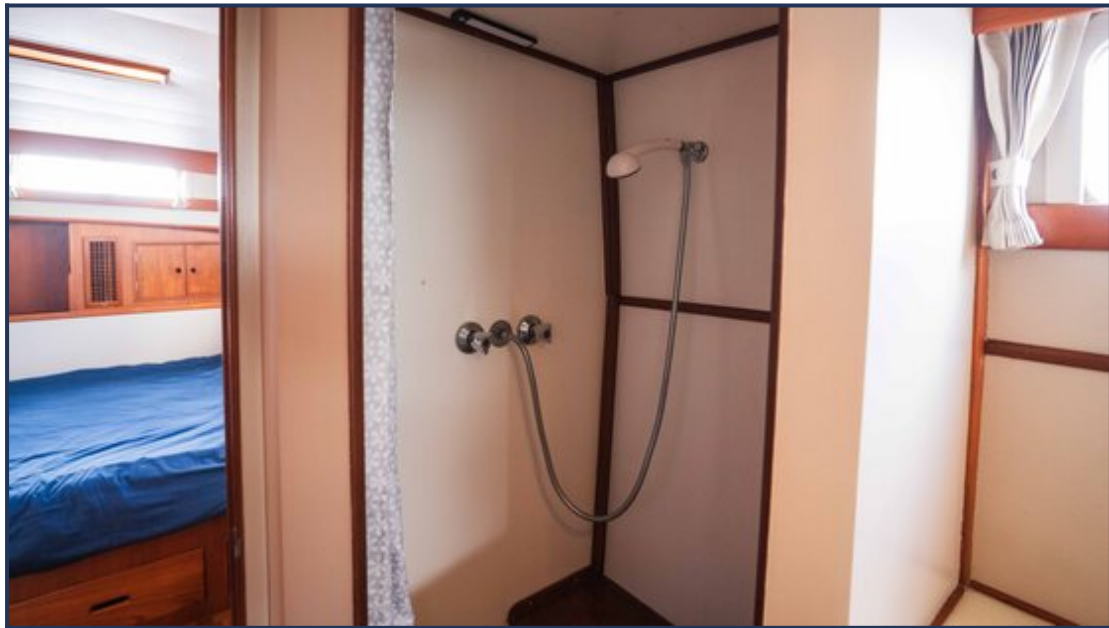
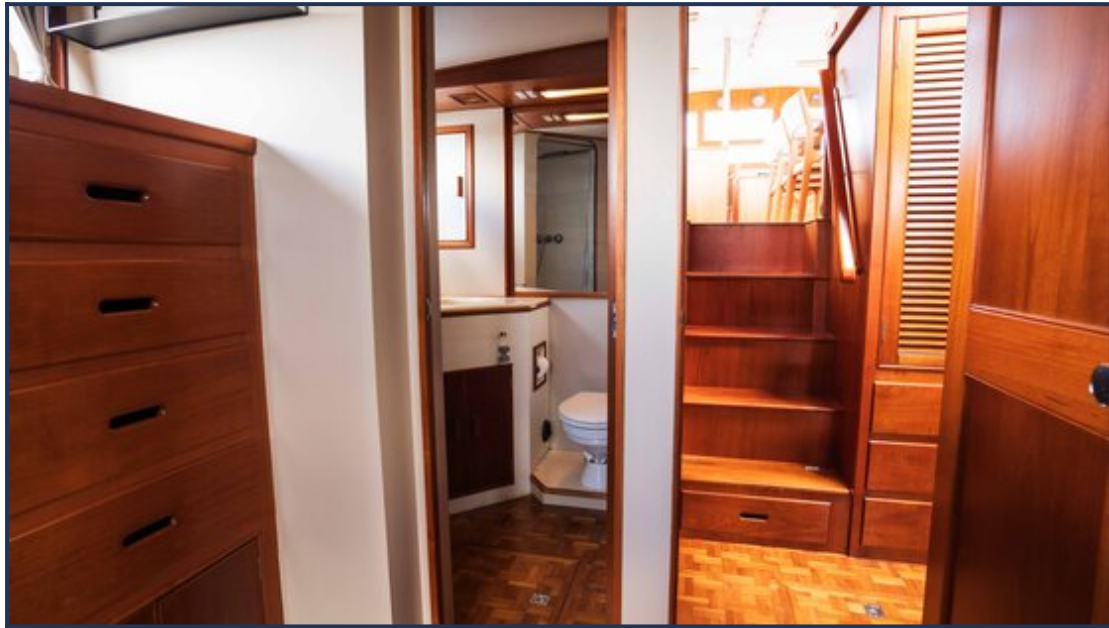






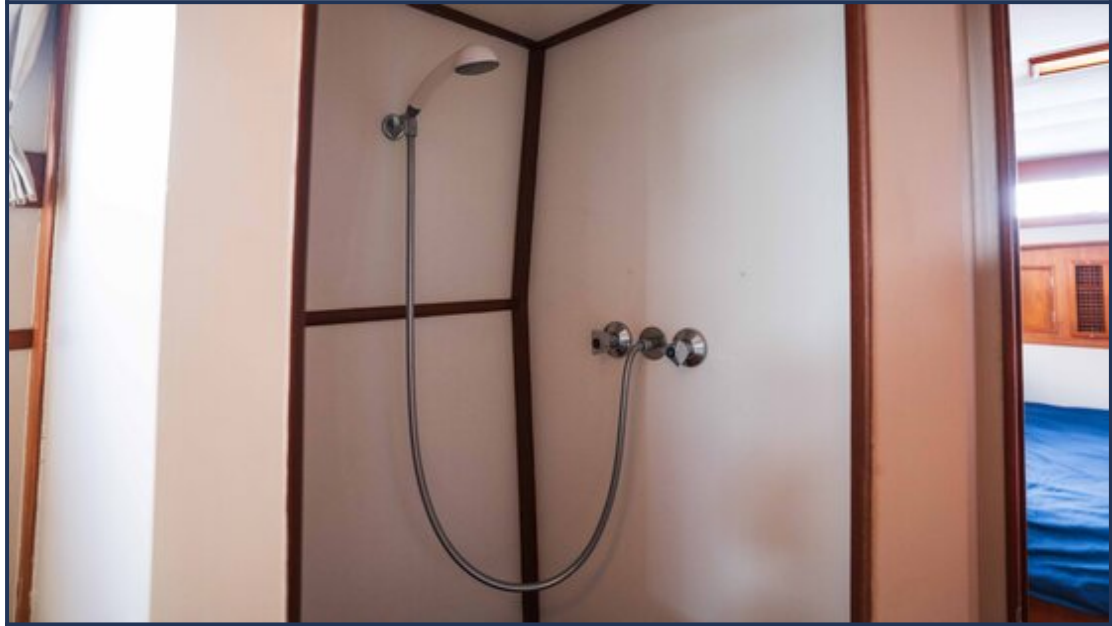












These particulars are given in good faith as supplied but cannot be guaranteed and cannot be used for contracts.