



MARITEAM

- YACHTING -



Elb Trawler 1095 'LOTTCHEN'

LOA (m):	11.98 m
Beam (m):	3.82 m
Draft (m):	1.2 m
Engines:	1x 120hp Iveco
Cabins:	2
Homeport:	Sales office, Heeg
Price:	€ 126,000

The ElbTrawler 1095 "LOTTCHEN" has been carefully maintained and modernized over the past few years. For instance, the vessel was professionally repainted in the Netherlands approximately four years ago, and important (technical) components have recently been replaced, including:

- a more powerful Vetus bow thruster
- a modernized electrical system with a Philippi switchboard
- an Eberspächer heating system
- a complete bimini top
- an extended swim platform

MARITEAM YACHTING

De Draei 29, 8621 CZ Heeg 📍 The Netherlands 📞 Phone +31 (0) 582 889254

info@mariteamyachting.nl 🌐 www.mariteamyachting.nl

Main specifications

Model:	1095
LOA (m):	11.98 m
Beam (m):	3.82 m
Draft (m):	1.2 m
Year:	1996
Hull Material:	Steel
Cabins:	2
Sleeping places:	4
Number of main engine(s):	1
Power of main engine(s) (hp):	120
Brand of main engine(s):	Iveco
Price:	€ 126,000
VAT status:	EU VAT paid

General

Name :	LOTTCHEN
Shipyard:	Allermöhe GmbH.
Cruising speed (Kn):	6kn
Maximum speed (Kn):	9kn
Air draft (m):	3.30m (to flybridge) 5.40 (to top of mast)
Displacement (t):	12t
Fuel tank (Litre and material):	1800L, Steel
Freshwater Tank (Liter and material):	350L, Aluminum
Hull material:	Steel
Superstructure material:	Steel
Deck material:	Steel

Deck finish:	artificial teak
Interior finish:	Mahagoni
Window material:	Dubble glass

Accommodation

Cabins:	2
Double bed:	2
Toilets:	2x electric
Heating system (brand, model, type):	Eberspächer, diesel hot air
Stove:	ENO 3-burner gas
Oven:	ENO Marine gas oven
Refrigerator:	Dometic in galley + drawer on flybridge
Freezer:	compartment in fridge
Radio:	Fusion

Machinery

Main engines control (Brand and type):	Dual hendel
Motor:	Iveco 8061M
Motor hours:	1028 (04-2026)
Steering system:	Hydraulic
Drive (Shaft, IPS, Jet):	Shaft drive
Shaft lubrication:	Water lubricated
Bowthruster (Brand, type, elec/hyd):	Vetus, electric
Water pressure pump (Brand, model):	Jabsco
Hot water system:	Quick Nautic Boiler 30L 220v

Macerator pump:	Jabsco
Fuel polishing system:	pre-filter

Electrical system

DC system (V) AC system (V):	12V / 220V
Inverter (V/W/Amp):	Waeco 12/220
House battery (Number of battery,type, total Amp, year):	2x lithium 12.8v 100Ah
Start battery (Number of battery,type, total Amp, year):	1x Varta 12v 170Ah

Safety system

Electrical bilge pump:	1x Lubase 12v
Search light:	present
Horn:	Electric

Navigation system

Compass:	Garmin
Gps plotter:	Garmin GPSmap 7410 xsv
Autopilot:	Garmin
Rudder indicator:	Garmin
Depth meter:	Garmin
AIS:	Garmin AIS300

Equipment

Anchor:	15kg stainless
Windlass:	Lofrans 12v
Deck shower:	present















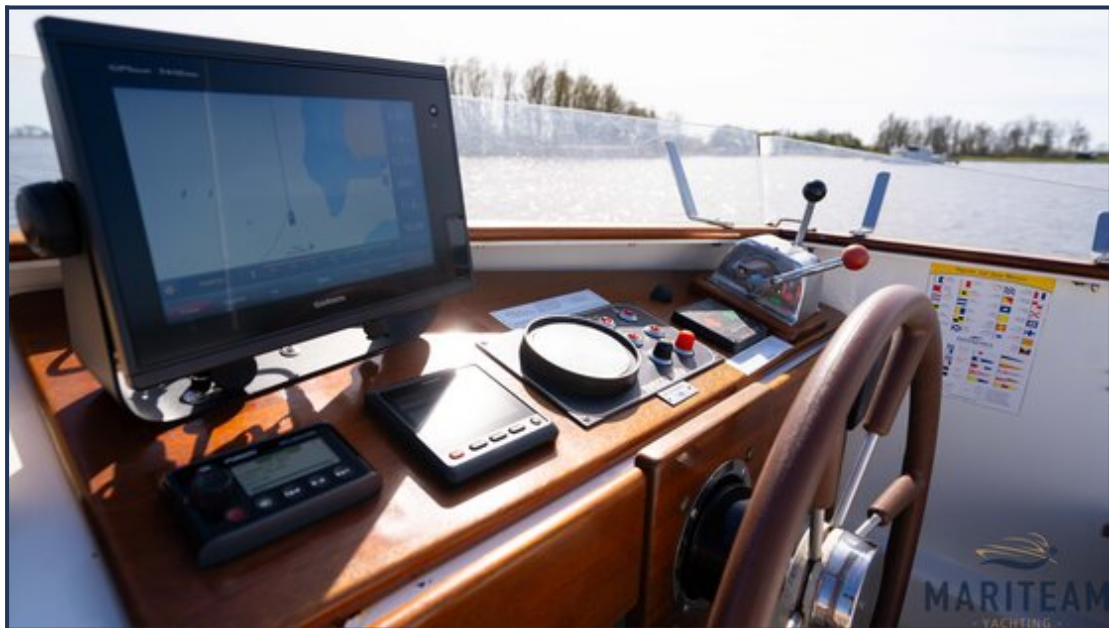


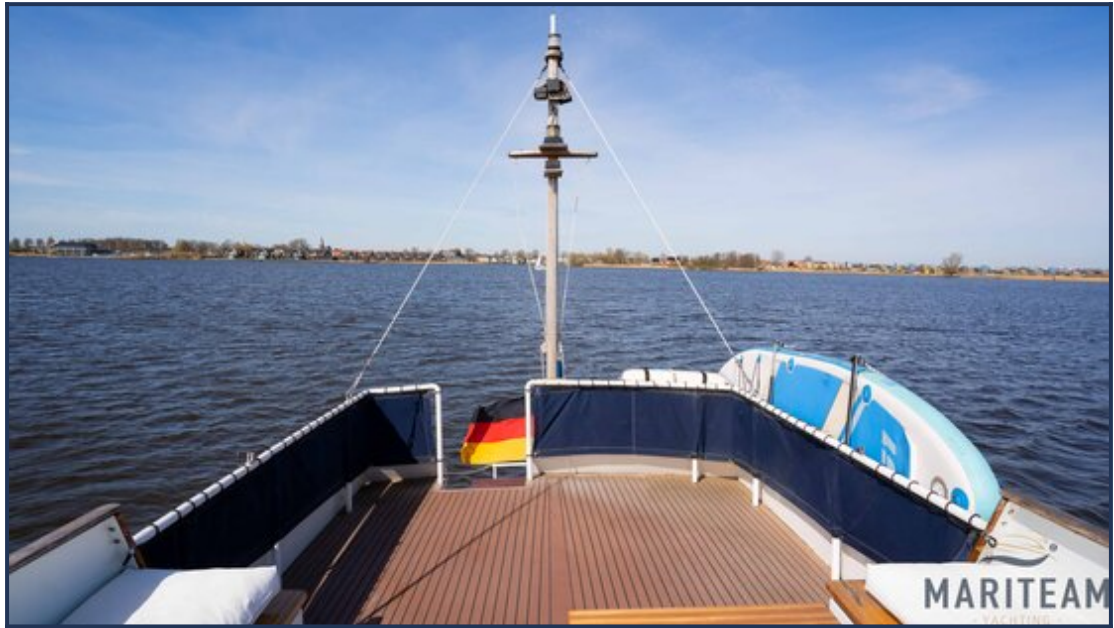




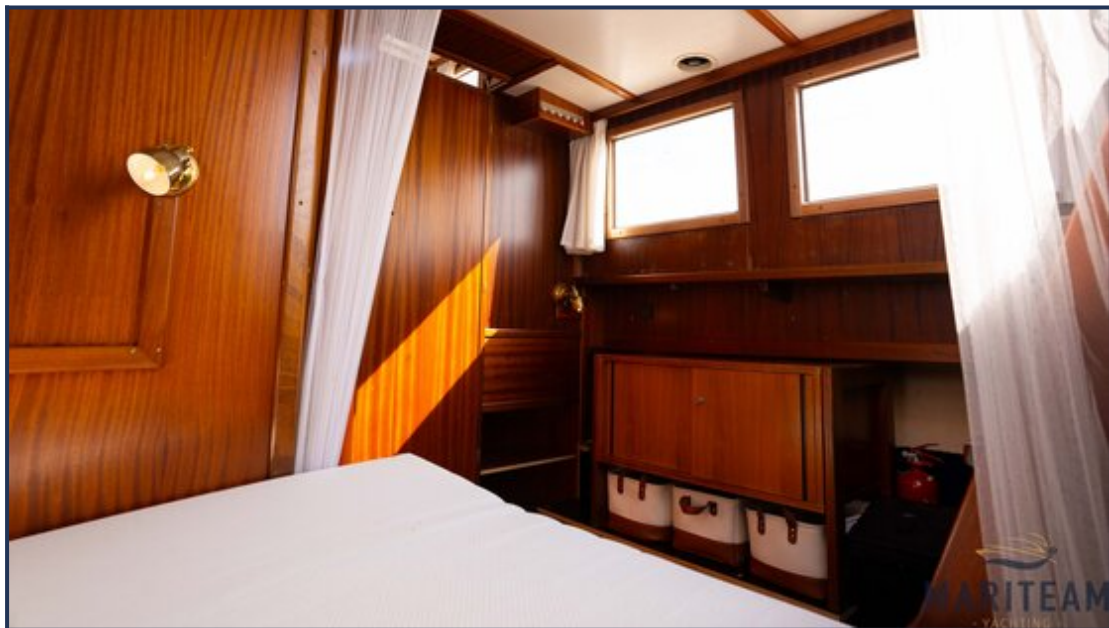












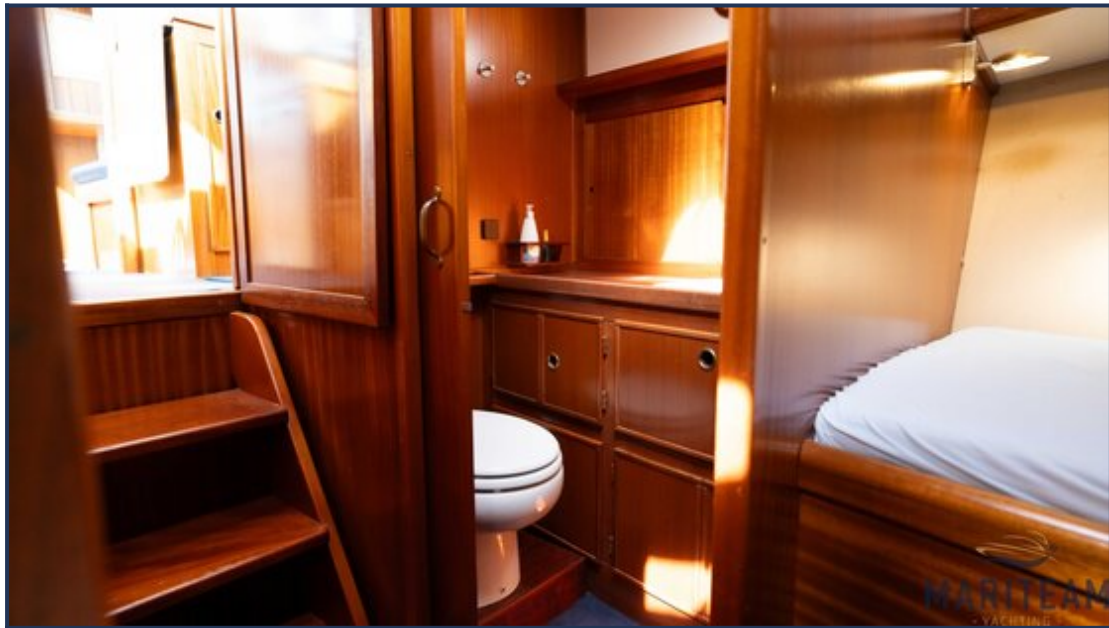


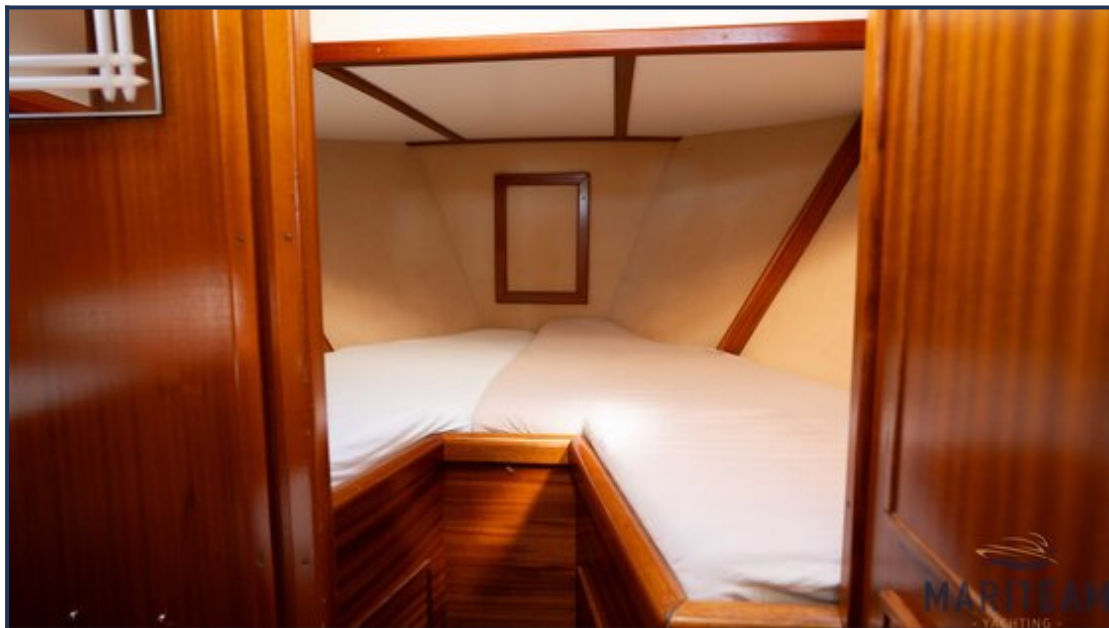


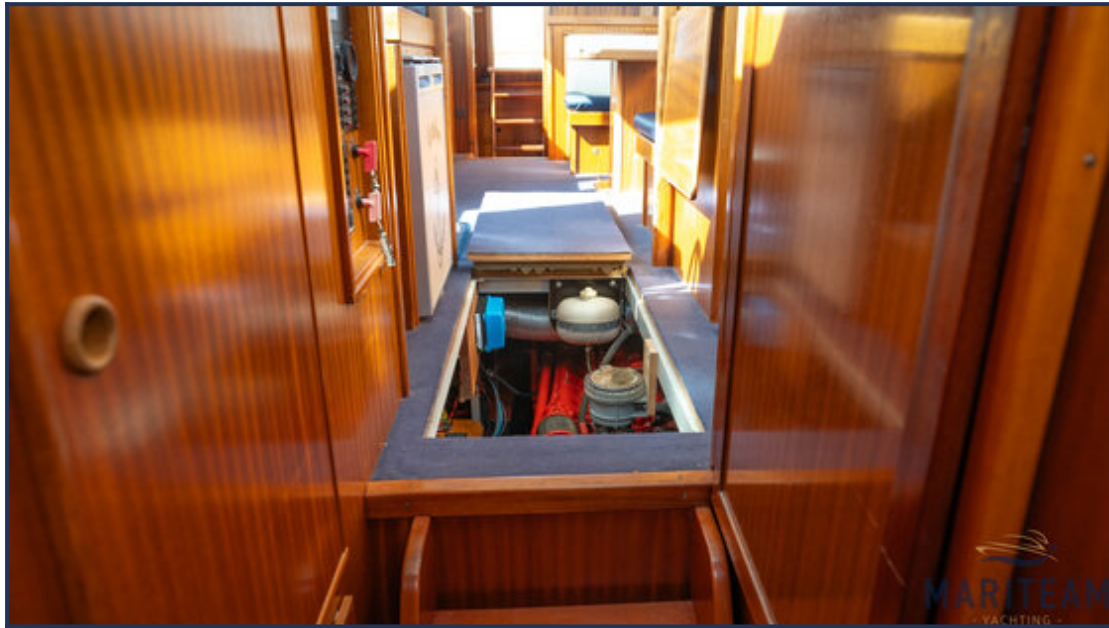












These particulars are given in good faith as supplied but cannot be guaranteed and cannot be used for contracts.