



MARITEAM

- YACHTING -



Grand Banks 53 Aleutian RP 'Earl Grey'

LOA (m):	16.39 m
Beam (m):	5.40 m
Draft (m):	1.45 m
Engines:	2x 715hp Cummins
Cabins:	3
Homeport:	Woudsend
Price:	€ 1,195,000

For those looking for a comfortable and fully equipped Grand Banks 53 Aleutian RP, the 'Earl Grey' is a particularly interesting offer with:

- Rotorswing stabilizers
- Aquamatic watermaker
- Sloopier bow and stern thrusters
- Docking controller and third helm station
- Sidedeckdoors
- 17.5 kW generator
- Electrically retractable radar bracket
- Camera system
- Recently updated Garmin navigation system
- Extensive engine and generator maintenance (winter '25/'26)

MARITEAM YACHTING

De Draei 29, 8621 CZ Heeg 📍 The Netherlands 📞 Phone +31 (0) 582 889254

info@mariteamyachting.nl 📧 www.mariteamyachting.nl



MARITEAM

- YACHTING -

MARITEAM YACHTING

De Draei 29, 8621 CZ Heeg 📍 The Netherlands 📞 Phone +31 (0) 582 889254
info@mariteamyachting.nl 🌐 www.mariteamyachting.nl

Main specifications

Model:	53 Aleutian RP
LOA (m):	16.39 m
Beam (m):	5.40 m
Draft (m):	1.45 m
Year:	2011
Hull Material:	GRP
Cabins:	3
Sleeping places:	6
Number of main engine(s):	2
Power of main engine(s) (hp):	715
Brand of main engine(s):	Cummins
Price:	€ 1,195,000
VAT status:	EU paid
HIN number:	MY-GNDAB007G112

General

Name :	Earl Grey
Shipyard:	Grand Banks Yachts
CE-category:	B
Cruising speed (Kn):	18.2
Maximum speed (Kn):	23.5
Air draft (m):	5,65m to hard top
Displacement (t):	33t
Fuel tank (Litre and material):	3785L Croslink poly
Freshwater Tank (Liter and material):	1136L LLPDE
Black water tank (Litre and material):	379L PVC

Grey water tank (Litre and material):	197L PVC
Hull material:	GRP
Superstructure material:	GRP
Deck material:	GRP
Deck finish:	Anti-slip + teak in cockpit
Interior finish:	Teak
Window material:	Single safety glass
Sliding and tilt windows:	present
Window ventilation:	Sliding and tilting windows
Antifouling (Year):	2023, ultrasonic system

Accommodation

Cabins:	3x
Double bed:	2x
Single berths:	2x
Showers:	2x
Toilets:	2x Tecma, electric
Heating system (brand, model, type):	Dometic corp. marine air
Airconditioning system (Brand, model):	Dometic corp. marine air, multiple zones
Stove:	Miele 4 burner, electric
Oven:	Miele
Refrigerator:	Vitrifigo
Freezer:	Vitrifrigo
Ice cubes maker:	U-line
Dish washer:	Miele
Washing machine/Dryer:	Miele
Vacuum cleaner system:	present

TV:	3x Samsung
Radio:	Pioneer with Bose speakers

Machinery

Main engines control (Brand and type):	Cummins Glendinning
Port engine (Brand, type, hp, gearbox):	Cummins, QSM 11, 715hp, ZF marine
Engine hours port engine:	1660 march 2026
Star engine (Brand, type, hp, gearbox):	Cummins, QSM 11, 715hp, ZF marine
Engine hours starboard engine:	1732 march 2026
Steering system:	Hydraulic
Drive (Shaft, IPS, Jet):	Z-drive
Prop (Number of blades, material):	2 x 4 blade
Generator (Brand, type, Kw):	Onan 17.5Kw
Generator hours:	2265 march 2026
Stabilizer system:	Rotorswing
Bowthruster (Brand, type, elec/hyd):	Sleipner 170/250TC
Sternthruster (Brand, type, elec/hyd):	Sleipner 170/250TC
Watermaker:	Aquamatic
Water presure pump (Brand, model):	Groco
Grey water tank pump:	Flojet
Hot water system:	Seaward
Macerator pump:	Sealand
Trim system:	Bennet

Electrical system

DC system (V) AC system (V):	24/220
Battery charger (V/W/Amp):	Mastervolt: House: Ultra 24/3500-100, Mass 24/75-C, Chargemaster 24/30-3, Generator: Chargemaster 12/35-3
Inverter (V/W/Amp):	Mastervolt Ultra 24/3500-100
House battery (Number of battery,type, total Amp, year):	3x Mastervolt Lithium 5000
Start battery (Number of battery,type, total Amp, year):	2x Mastervolt AGM 225Ah
Generator battery (Number of battery,type, total Amp, year):	1x Royal 105Ah
Bowthruster battery (Number of battery,type, total Amp, year):	2x AGM
Sternthruster battery (Number of battery,type, total Amp, year):	2x Magic truck 180Ah
Galvanic isolater:	Mastervolt Isolation mass GI7.0

Safety system

Life raft:	Eurolife 8 person, last service 11/2022
Electrical bilge pump:	Rule Industries
Manual bilge pump:	Whale gusher
Fire extinguisher engine room:	BSCO supression system
Fire alarm:	present
EPIRB:	Tron60
Search light:	1x
Horn:	BEP marine

Navigation system

Compass:	Ritchie
----------	---------

Gps plotter:	Garmin GPSMap 7416
Radar screen:	Via Garmin plotter
Radar :	Garmin GMR Fantom 50W
Autopilot:	Garmin reactor 40 + Remote
Rudder indicator:	VDO
Log:	Via Garmin plotter
Depth meter:	Via Garmin plotter
VHF:	Garmin 200I
AIS:	Garmin AIS600
Remote Control:	Hydronautica docking remote
Camera:	Multiple angles

Equipment

Tender:	Not included
Tender crane:	Aritex R450-2.3M-3.1M-AL
Gangway:	Opacmare
Anchor:	1x 40Kg
Windlass:	Lofrans Tigres
Electric winch:	Maxxwell
Deckwash:	1x
Deck shower:	1x hot and cold

























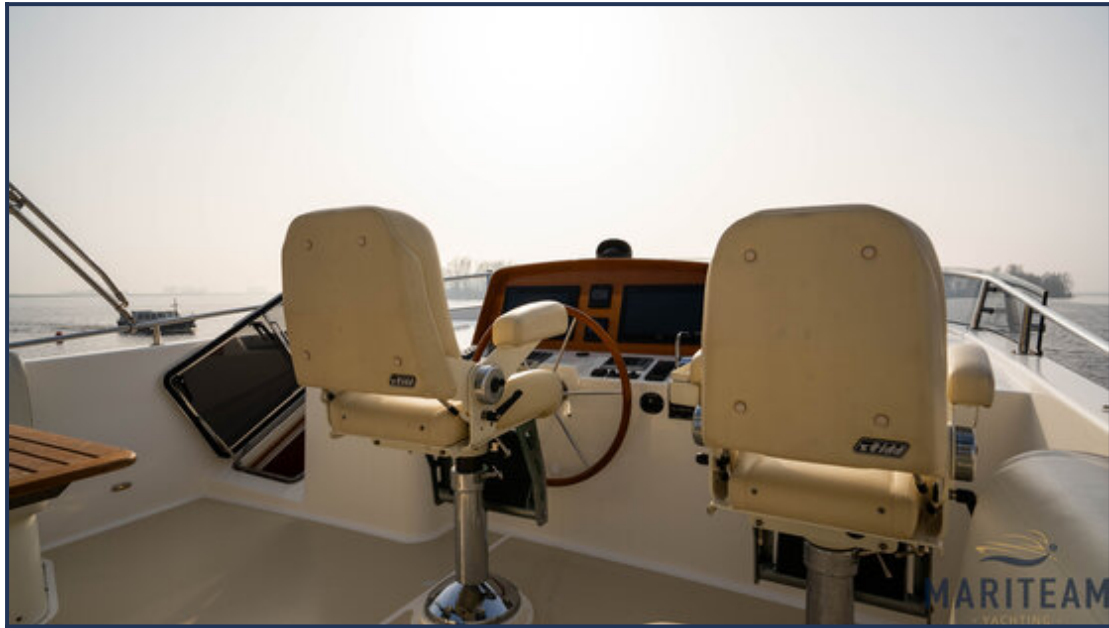
























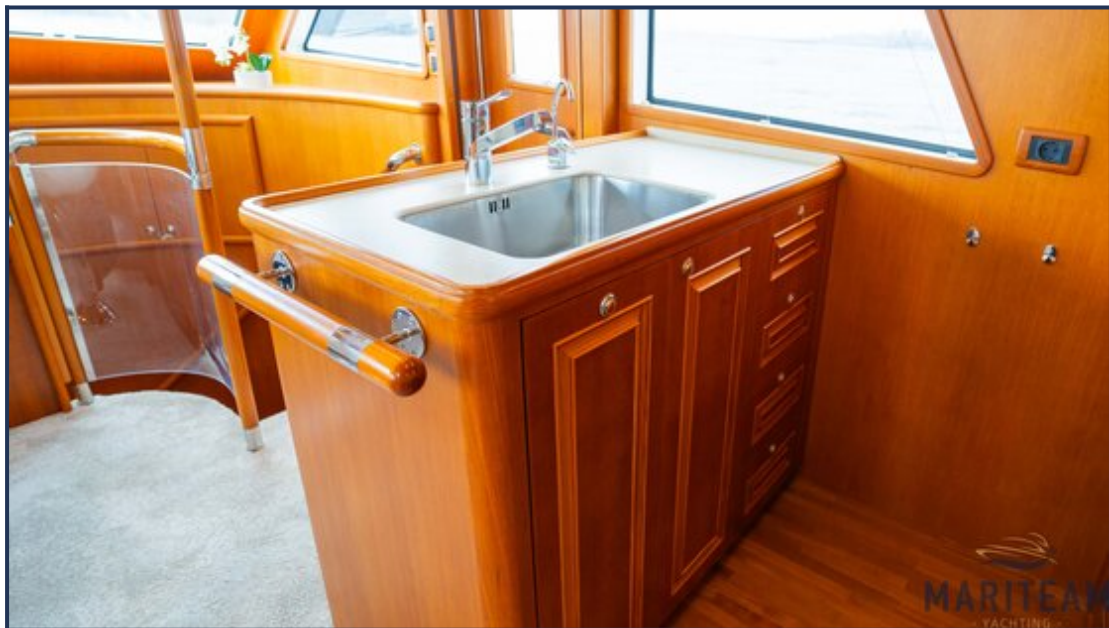


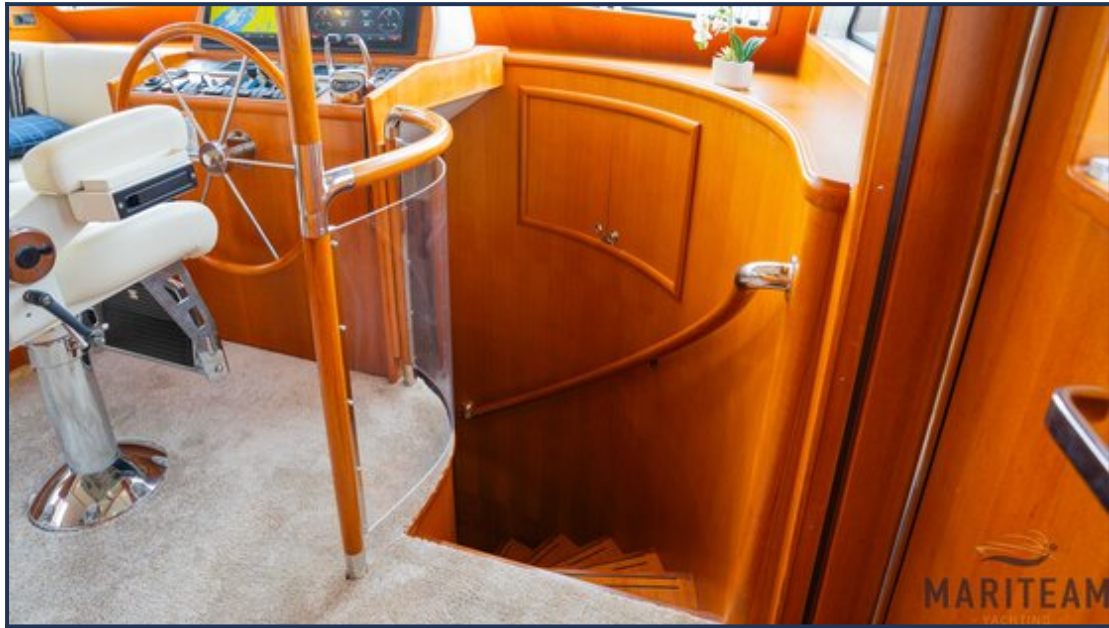






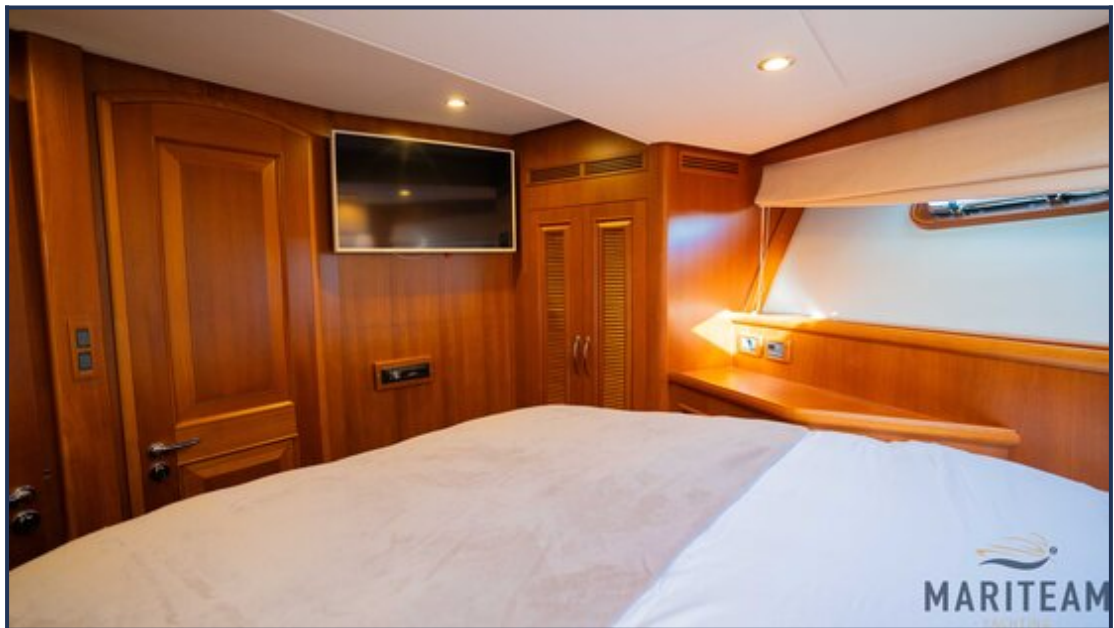












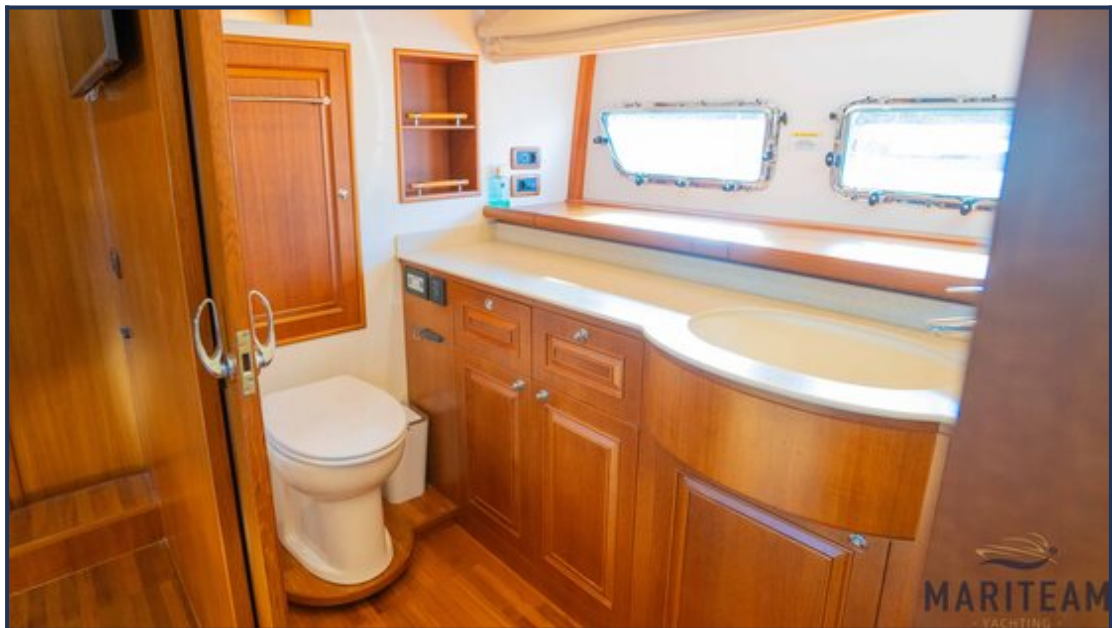


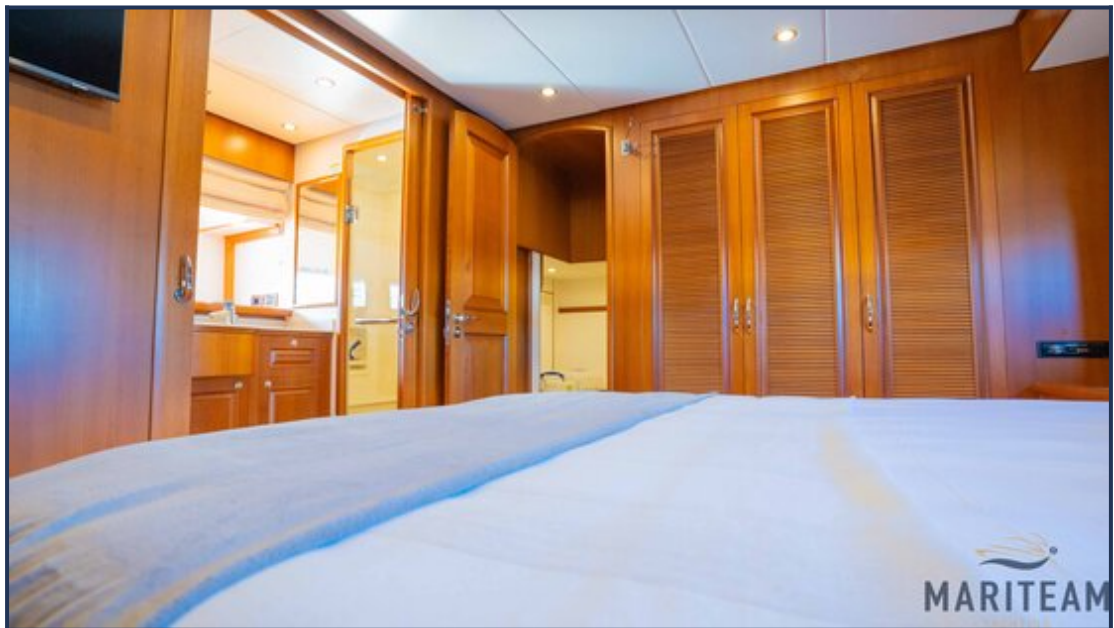




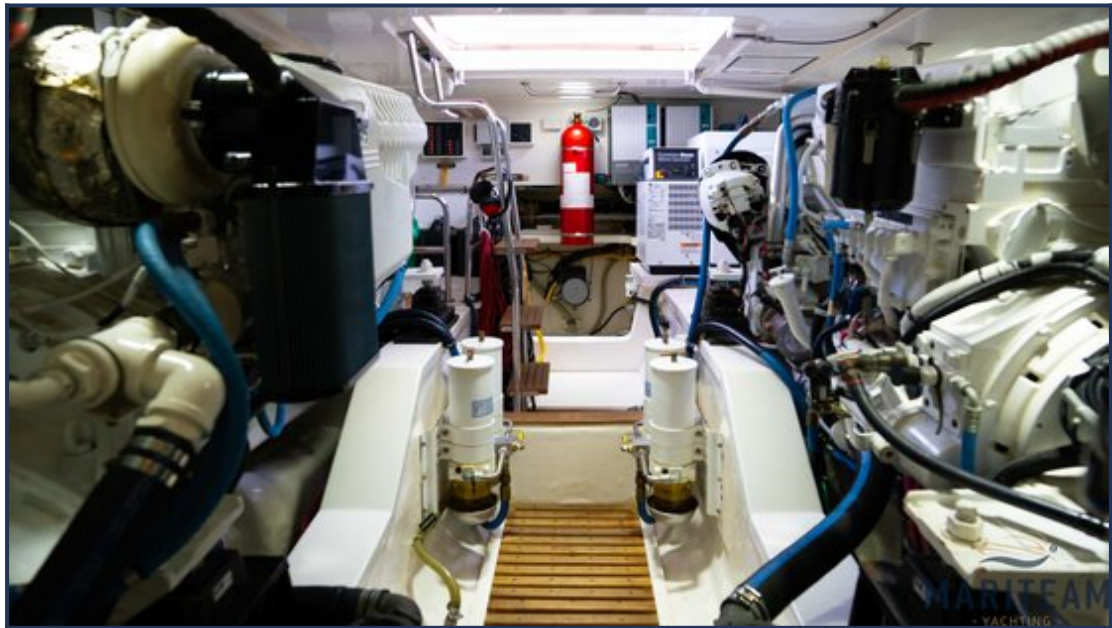




















These particulars are given in good faith as supplied but cannot be guaranteed and cannot be used for contracts.