



MARITEAM

- YACHTING -



Adagio 51.5 VITTORIA

LOA (m):	15.70 m
Beam (m):	4.50 m
Draft (m):	1.37 m
Engines:	2x 370hp Volvo
Cabins:	3
Homeport:	Tuscany, Marina di Scarlino
Price:	€ 590,000

The Adagio 51.5 VITTORIA is a very neat and excellently maintained trawler, built for comfortable and efficient cruising.

What sets this Adagio 51.5 apart includes:

- Private owner, never chartered
- Webasto air conditioning with 6 zones
- Mastervolt energy system with a recent battery set
- Vetus bow thruster
- Spacious owner's cabin with ensuite bathroom

MARITEAM YACHTING

De Draei 29, 8621 CZ Heeg 📍 The Netherlands 📞 Phone +31 (0) 582 889254

info@mariteamyachting.nl 📧 www.mariteamyachting.nl

Main specifications

Model:	51.5
LOA (m):	15.70 m
Beam (m):	4.50 m
Draft (m):	1.37 m
Year:	2009
Hull Material:	GRP
Cabins:	3
Sleeping places:	5
Number of main engine(s):	2
Power of main engine(s) (hp):	370
Brand of main engine(s):	Volvo
Price:	€ 590,000
VAT status:	EU Paid
HIN number:	CN-ALY51161B809
Year launched:	2008

General

Name :	VITTORIA
Shipyard:	Fuzhou Allegro Yacht Co. Ltd.
CE-category:	CE-B
Cruising speed (Kn):	8 kn
Maximum speed (Kn):	16 kn
Displacement (t):	25t
Fuel tank (Litre and material):	2120L
Freshwater Tank (Liter and material):	900L,
Hull material:	GRP

Superstructure material:	GRP
Deck material:	GRP
Deck finish:	Teak
Interior finish:	Teak
Antifouling (Year):	2025

Accommodation

Cabins:	3 cabin
Double bed:	2x
Single berths:	2x
Showers:	2x
Toilets:	Jabsco, Electric
Heating system (brand, model, type):	Webasto Airco, hot and cold - 6 zone
Airconditioning system (Brand, model):	Webasto Airco, hot and cold - 6 zone
Stove:	Seaward Princess Gourmet
Oven:	Seaward Princess Gourmet
Microwave:	Siemens
Refrigerator:	Vitrifrigo, 250L
Freezer:	Vitrifrigo
Washing machine:	Candy
TV:	In salon

Machinery

Main engines control (Brand and type):	Volvo, electronic controlled
Port engine (Brand, type, hp, gearbox):	Volvo D6-370, 370hp

Engine hours port engine:	+ -990 (12/2025)
Star engine (Brand, type, hp, gearbox):	Volvo D6-370, 370hp
Engine hours starboard engine:	+ -990 (12/2025)
Drive (Shaft, IPS, Jet):	Shaft drive
Prop (Number of blades, material):	4-blade
Generator (Brand, type, Kw):	Cummins 11Kw
Generator hours:	+ -250u (12/2025)
Bowthruster (Brand, type, elec/hyd):	Vetus electric bowthruster
Watermaker:	120 l/h
Water pressure pump (Brand, model):	Jabsco
Hot water system:	Webasto
Macerator pump:	Jabsco
Fuel polishing system:	Fuell filters

Electrical system

DC system (V) AC system (V):	12v/24v/220v
Battery charger (V/W/Amp):	Mastervolt Chargemaster 24/60-3
Inverter (V/W/Amp):	Mastervolt Mass Combi 24/2000
House battery (Number of battery,type, total Amp, year):	6x 220 Ah, Yuasa (2024)
Start battery (Number of battery,type, total Amp, year):	2x 220Ah Varta (2024)

Safety system

Life raft:	present
Electrical bilge pump:	3x

Fire extinguisher engine room:	2x hand held extinguishers
Horn:	Electric

Navigation system

Compass:	Riviera Black
Gps plotter:	Raymarine E120
Radar screen:	Raymarine E120
Radar :	Raymarine
Autopilot:	Raymarine Autopilot + remote
Rudder indicator:	On Raymarine Autopilot screen
Log:	Raymarine Tridata
VHF:	Raymarine
AIS:	Raymarine

Equipment

Gangway:	Hydraulic Gangway
Windlass:	Lofrans, electric
Deck shower:	present

















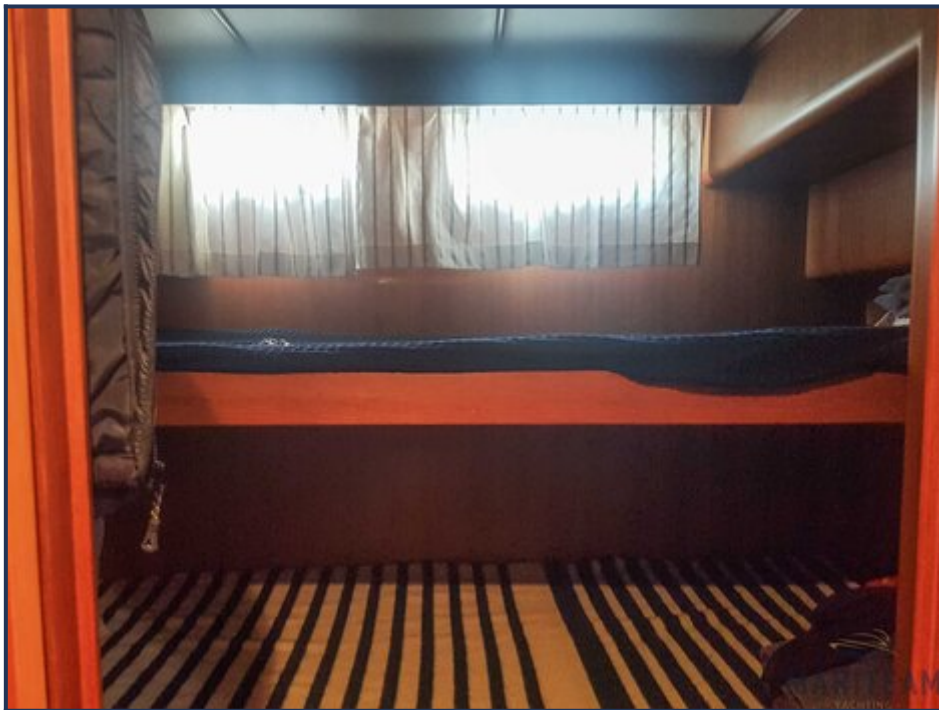












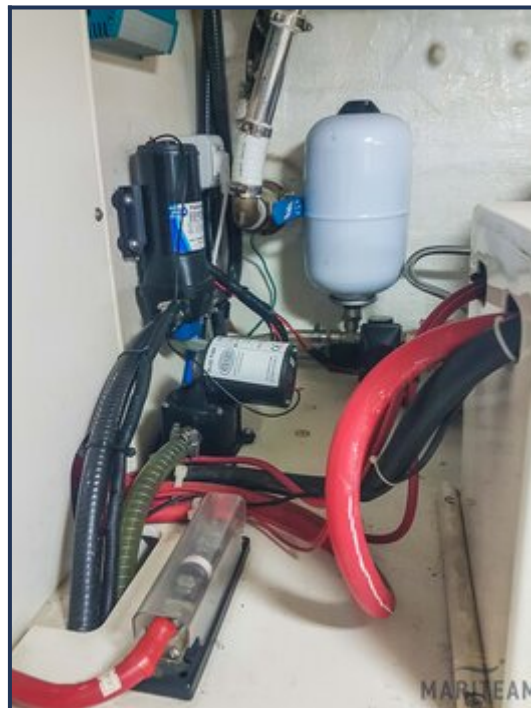




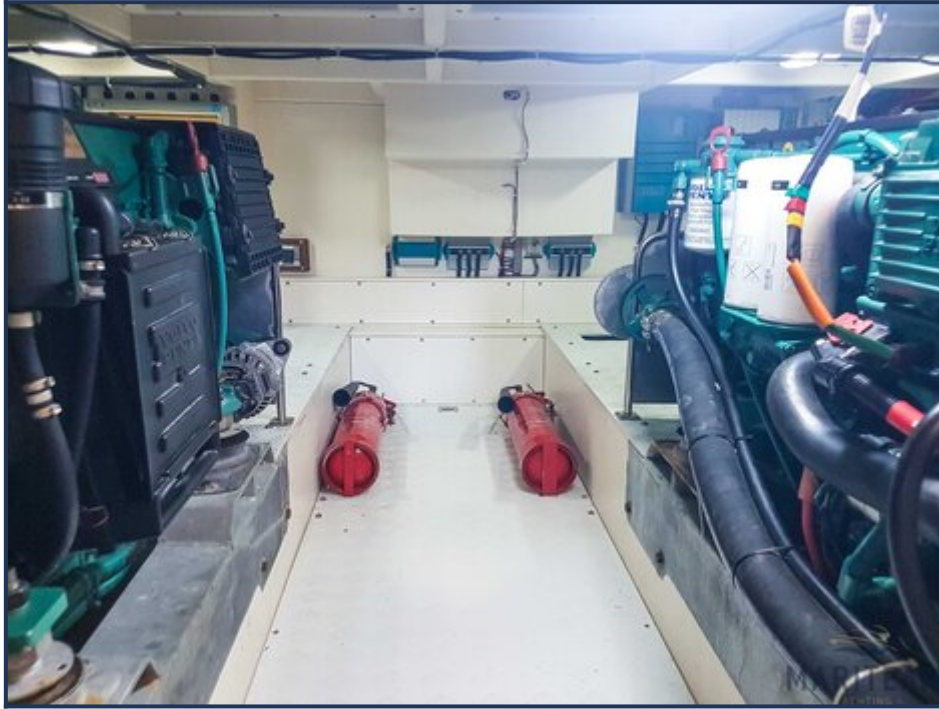
















These particulars are given in good faith as supplied but cannot be guaranteed and cannot be used for contracts.