



MARITEAM

- YACHTING -



Grand Banks 36 Sedan 'Hazel'

LOA (m):	11.23 m
Beam (m):	3.86 m
Draft (m):	1.22 m
Engines:	2x 250hp Cummins
Cabins:	2
Homeport:	Sales office, Heeg
Price:	€ (not set)

Welcome aboard the unique Grand Banks 36 Sedan "Hazel"!

The Hazel combines classic elegance with modern comforts. Featuring two comfortable cabins, a shared bathroom with an electric toilet, a bright and spacious salon with panoramic views, a fully equipped galley, and a generous flybridge, this boat is perfect for relaxed cruising.

MARITEAM YACHTING

De Draei 29, 8621 CZ Heeg 🇳🇱 The Netherlands 📞 Phone +31 (0) 582 889254

info@mariteamyachting.nl 🌐 www.mariteamyachting.nl

Main specifications

Model:	36 Riviera
LOA (m):	11.23 m
Beam (m):	3.86 m
Draft (m):	1.22 m
Year:	1993
Hull Material:	GRP
Cabins:	2
Sleeping places:	4
Number of main engine(s):	2
Power of main engine(s) (hp):	250
Brand of main engine(s):	Cummins
Price:	€ (not set)
VAT status:	EU Paid
HIN number:	GDNC1053G394

General

Name :	Hazel
Shipyard:	American Marine LTD
Cruising speed (Kn):	8
Maximum speed (Kn):	18
Air draft (m):	3.94 top of windshield
Displacement (t):	11.7
Fuel tank (Litre and material):	2x 757L (mild steel)
Freshwater Tank (Liter and material):	2x 246L (mild steel)
Hull material:	GRP
Superstructure material:	GRP

Deck material:	GRP
Deck finish:	Teak
Interior finish:	Teak
Window material:	Sinlge safety glass
Window ventilation:	Sliding and Tilting

Accommodation

Cabins:	2x
Double bed:	1x
Single berths:	2x
Showers:	1x
Toilets:	1x Jabsco electric
Heating system (brand, model, type):	Eberspacher airtronic MD4-4Kw
Stove:	Ceran Scott 2 burner
Combi oven/microwave:	Sharp R953
Refrigerator:	Isotherm + compartment on Flybridge
Freezer:	freezer compartment
Radio:	Fushion

Machinery

Main engines control (Brand and type):	Kobelt single lever
Port engine (Brand, type, hp, gearbox):	Cummins 6BTA 5.9, 250hp, Twin Disc
Engine hours port engine:	2792 (november 2025)
Star engine (Brand, type, hp, gearbox):	Cummins 6BTA 5.9, 250hp, Twin Disc
Engine hours starboard engine:	3405 (november 2025)

Steering system:	Seastar hydraulic
Drive (Shaft, IPS, Jet):	Drive shaft
Shaft lubrication:	Water
Prop (Number of blades, material):	3 blade
Generator (Brand, type, Kw):	Fisher Panda 3.5Kw
Generator hours:	687 (november 2025)
Bowthruster (Brand, type, elec/hyd):	Sidepower, electric
Hot water system:	Seaward 41L
Trim system:	Boat leveler CO

Electrical system

DC system (V) AC system (V):	12V - 220V
Battery charger (V/W/Amp):	Mastervolt powercharger 12/40-3
Inverter (V/W/Amp):	-
House battery (Number of battery,type, total Amp, year):	1x Varta Led240-12V-240Ah
Start battery (Number of battery,type, total Amp, year):	1x Varta Led240-12V-240Ah
Bowthruster battery (Number of battery,type, total Amp, year):	1x Optima 50Ah

Safety system

Electrical bilge pump:	2x Rule 2000 GHP
Manual bilge pump:	1x whale gusher
Horn:	kahlenberg

Navigation system

Compass:	Danforth
Gps plotter:	Axiom Plus 12
Radar screen:	Raymarine C70
Radar :	Raymarine
Autopilot:	Raymarine ST6000+
Rudder indicator:	VDO
Log:	Raymarine ST60+
Depth meter:	Raymarine ST60+
VHF:	Navman 7110

Equipment

Tender crane:	Mast + Boom
Anchor:	1x Bruce anchor 15kg
Windlass:	Lofrans Tigres 1000W
Deckwash:	1x
Deck shower:	1x hot/cold























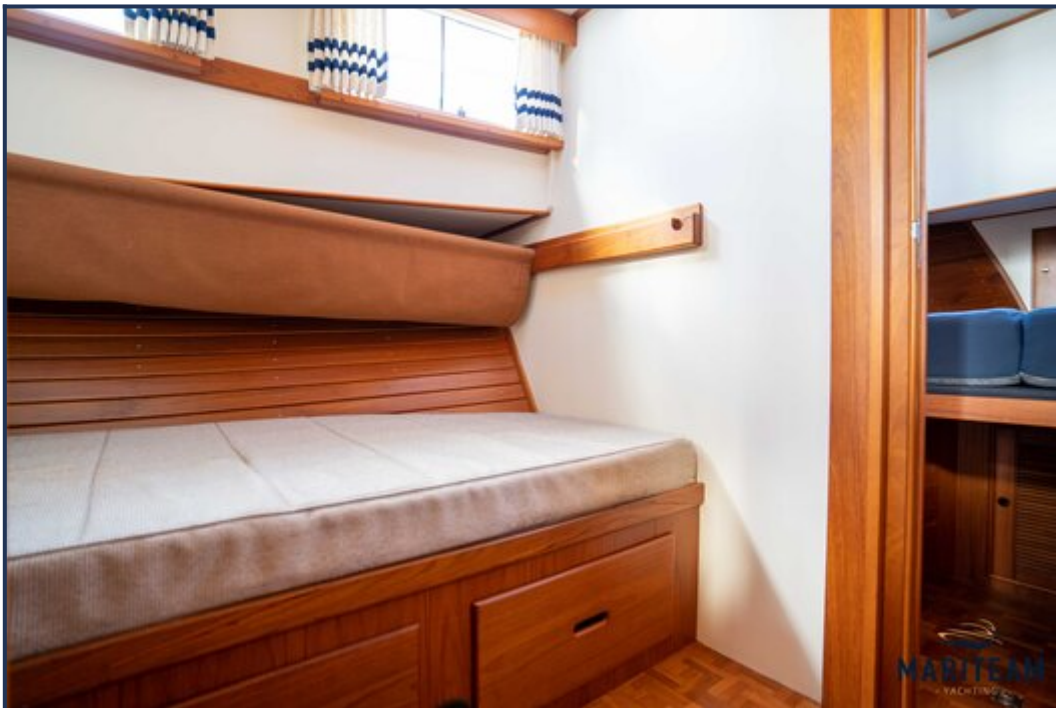
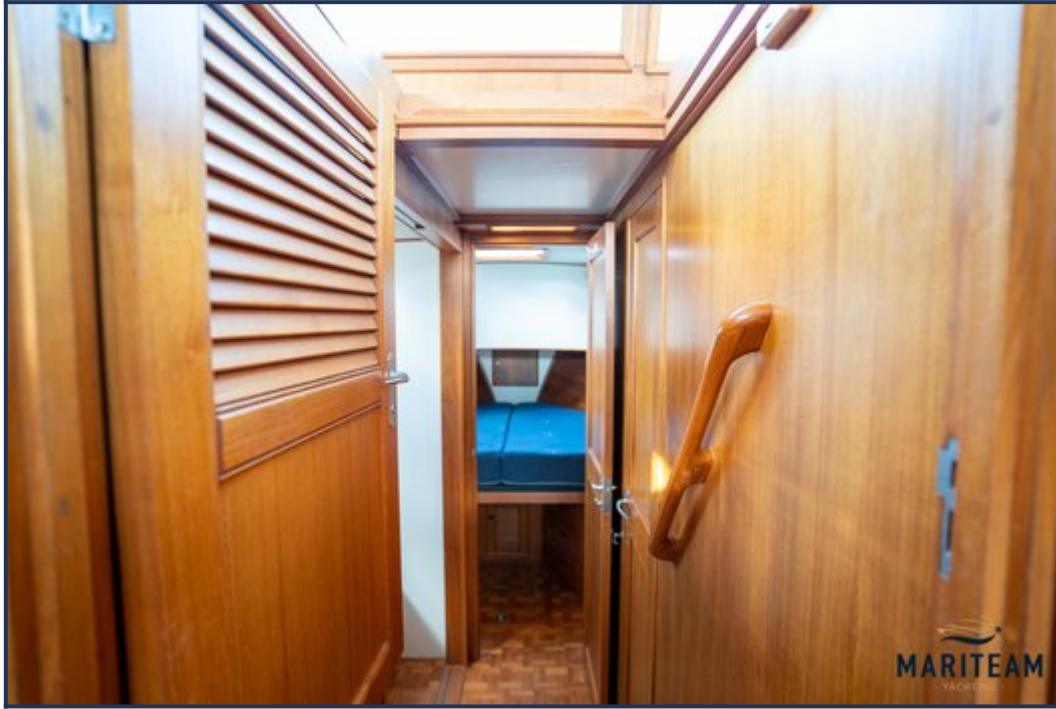


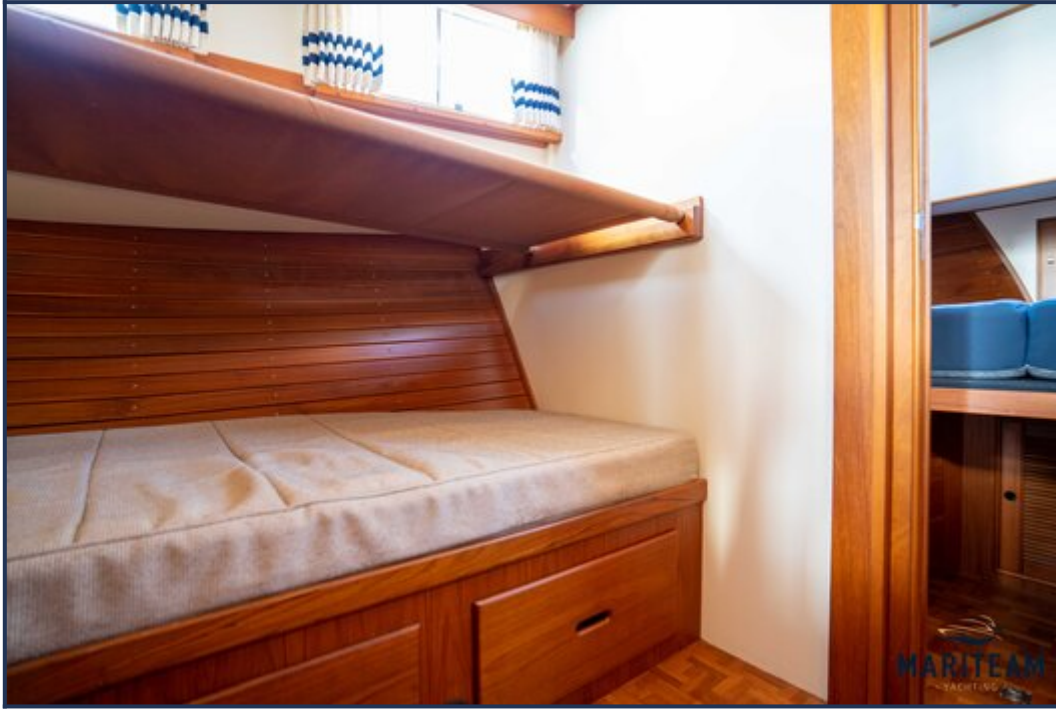


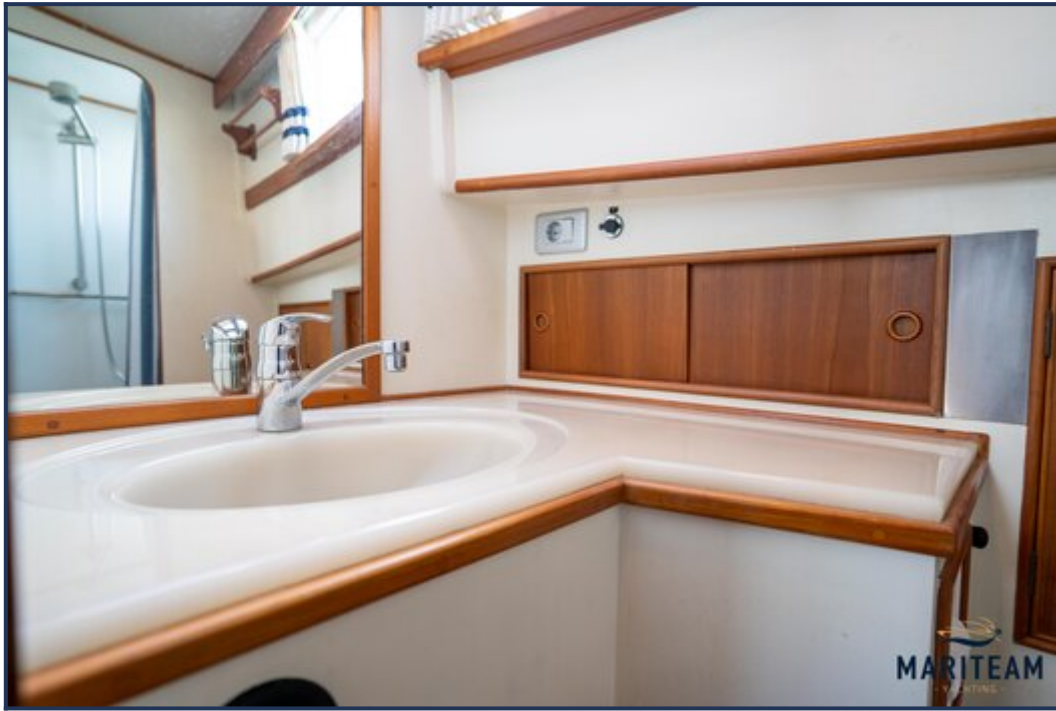


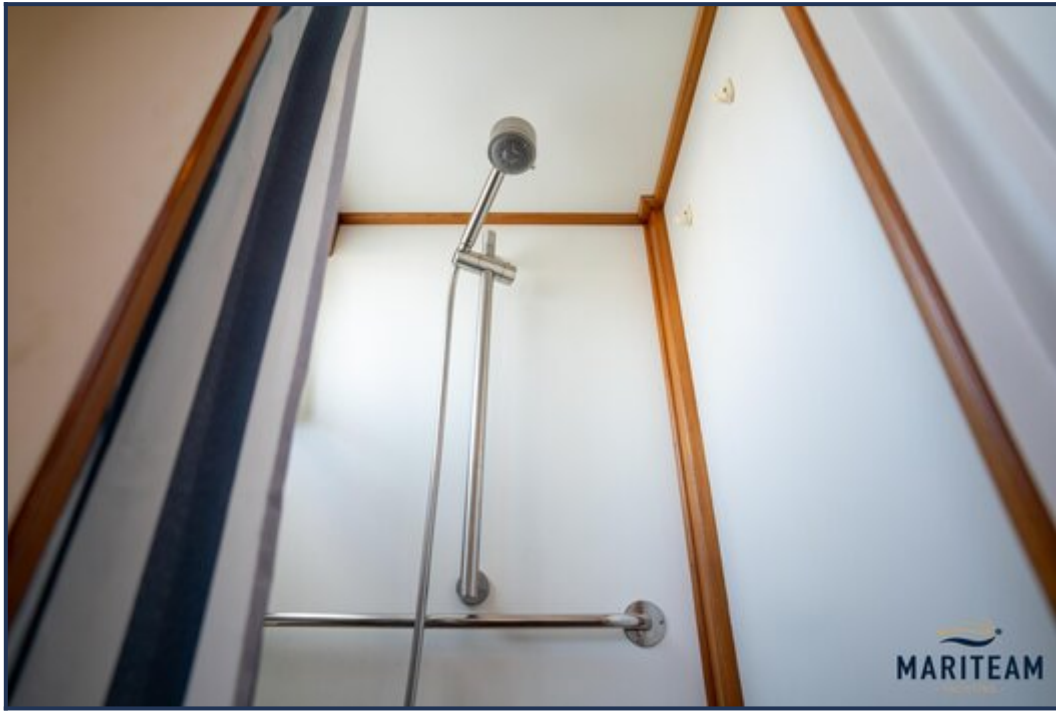


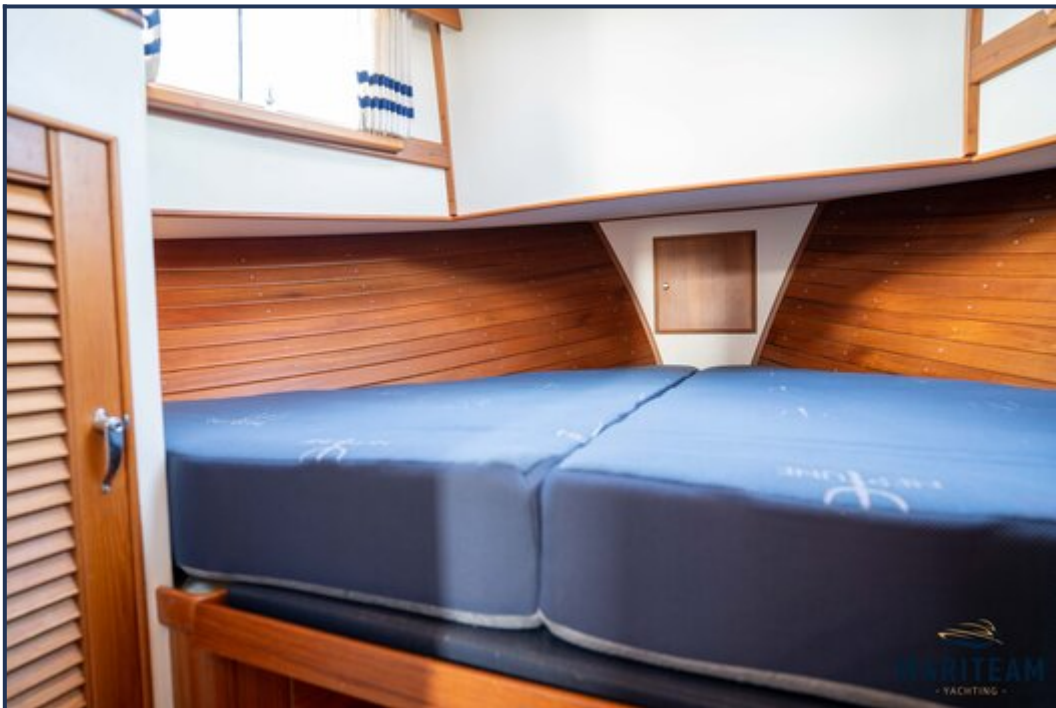


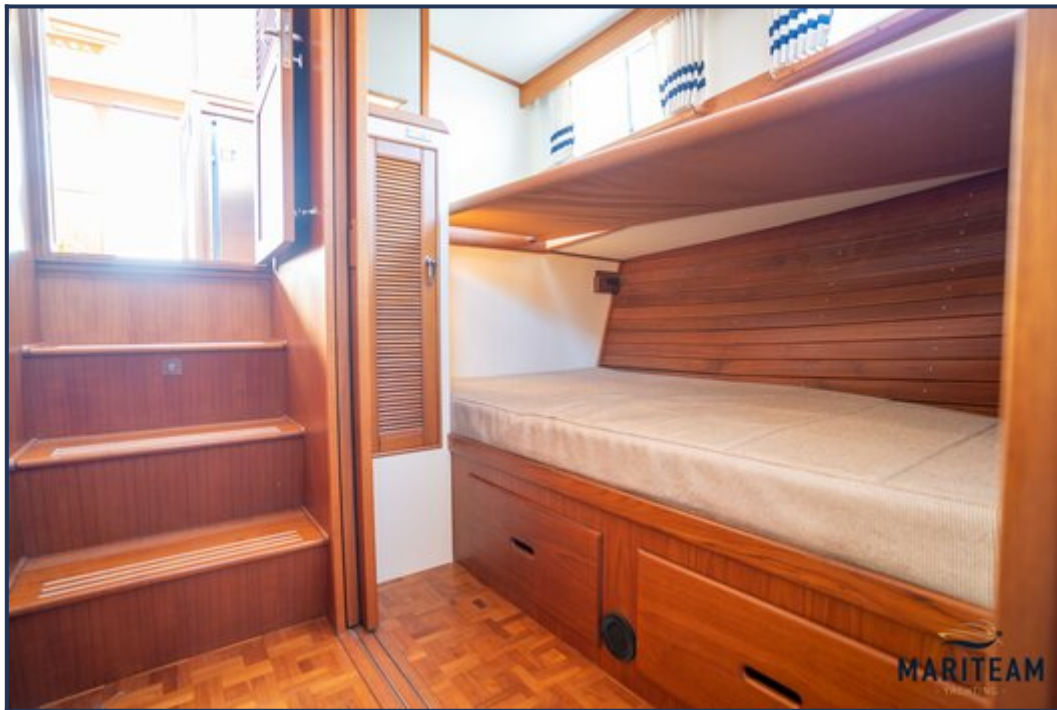
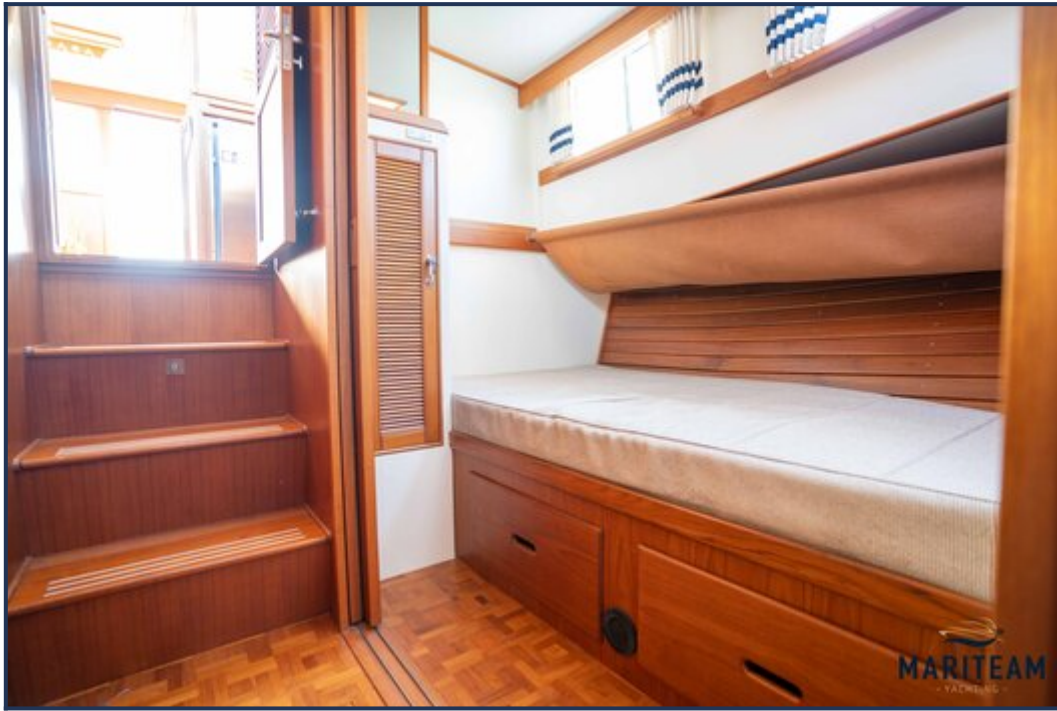


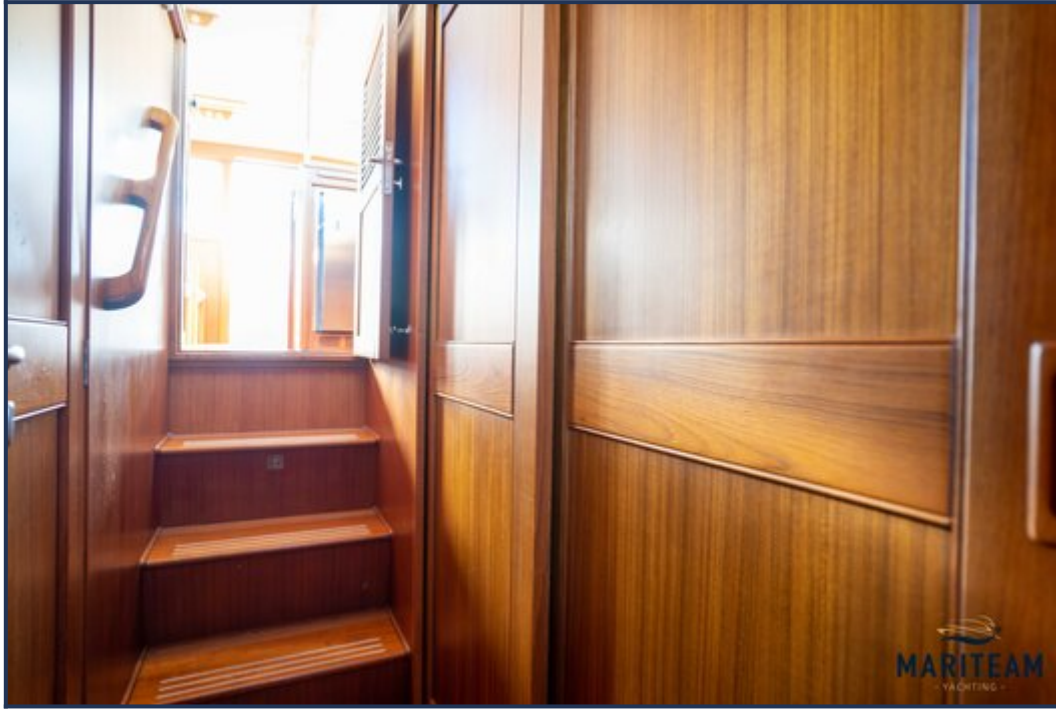


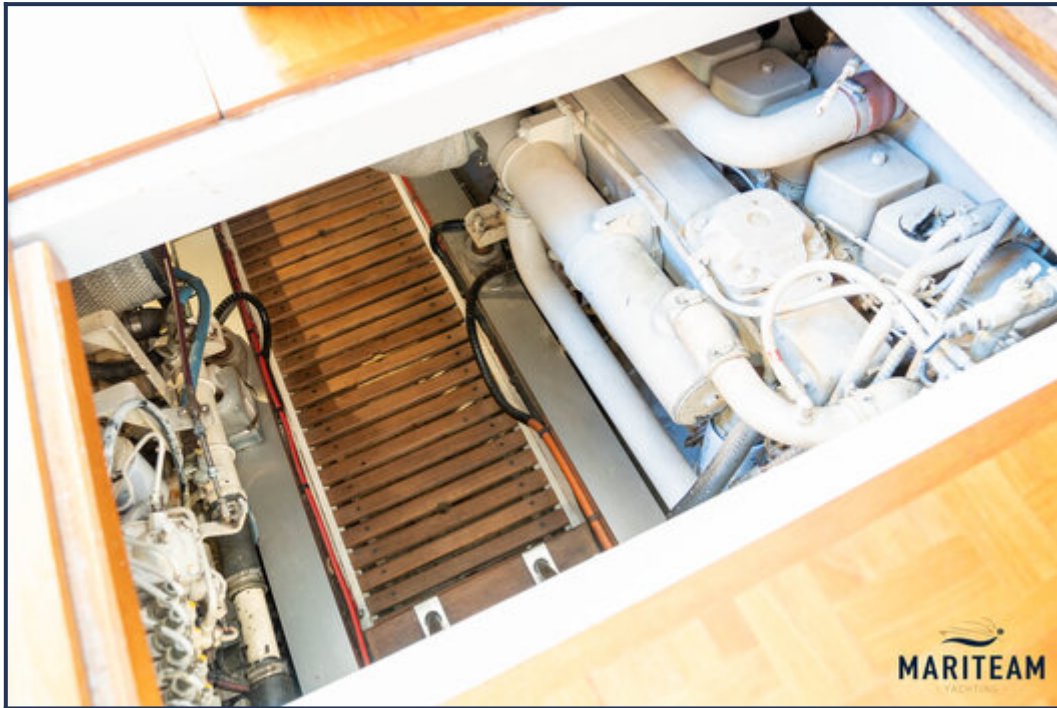


















These particulars are given in good faith as supplied but cannot be guaranteed and cannot be used for contracts.