



MARITEAM

- YACHTING -



Grand Banks Eastbay 38 EX 'Compass Rose'

LOA (m):	11.58 m
Beam (m):	4.01 m
Draft (m):	1.18 m
Engines:	2x 435hp Caterpillar
Cabins:	1
Homeport:	Sales office, Heeg
Price:	€ 249,000

The Grand Banks Eastbay series, designed by C. Raymond Hunt, is renowned for its excellent seakeeping abilities and comfort. The Compass Rose is a beautiful example of this. The EX version allows you to cruise fully open, but also sheltered under the soft top.

MARITEAM YACHTING

De Draei 29, 8621 CZ Heeg 📍 The Netherlands 📞 Phone +31 (0) 582 889254

info@mariteamyachting.nl 📧 www.mariteamyachting.nl

Main specifications

Model:	38 EX
LOA (m):	11.58 m
Beam (m):	4.01 m
Draft (m):	1.18 m
Year:	2000
Hull Material:	GRP
Cabins:	1
Sleeping places:	2
Number of main engine(s):	2
Power of main engine(s) (hp):	435
Brand of main engine(s):	Caterpillar
Price:	€ 249,000
VAT status:	EU paid
HIN number:	MS-GNDH0089H000

General

Name :	Compass Rose
Shipyard:	Grand Banks Yachts
CE-category:	B
Cruising speed (Kn):	20
Maximum speed (Kn):	27
Air draft (m):	2.7
Displacement (t):	11.6
Fuel tank (Litre and material):	1302L, aluminium
Freshwater Tank (Liter and material):	359L, aluminium
Black water tank (Litre and material):	120L, GRP

Hull material:	GRP
Superstructure material:	GRP
Deck material:	GRP
Deck finish:	Teak
Interior finish:	Teak
Window ventilation:	Slide and tilt windows
Antifouling (Year):	Stripped to the gelcoat and treated with a new paint system (2024)

Accommodation

Cabins:	1x
Double bed:	2 + 2
Showers:	1x
Toilets:	1x electric
Heating system (brand, model, type):	Webasto Airtop 5000, 5KW (2024)
Stove:	Princess 3 burner Gas
Oven:	Seaward Princess
Microwave:	Sharp
Refrigerator:	1x Coolmatic
Freezer:	1x freezer compartment
TV:	1x Thomson
Radio:	Fusion

Machinery

Main engines control (Brand and type):	Kobelt
Port engine (Brand, type, hp, gearbox):	Caterpillar 3208TA, 435pk

Engine hours port engine:	1854 september 2025
Star engine (Brand, type, hp, gearbox):	Caterpillar 3208TA, 435pk
Engine hours starboard engine:	1870 september 2025
Steering system:	Hydraulic
Drive (Shaft, IPS, Jet):	Drive shaft
Shaft lubrication:	Water lubricated
Prop (Number of blades, material):	2x 5 blade
Generator (Brand, type, Kw):	Onan 7Kw
Generator hours:	203 september 2025
Bowthruster (Brand, type, elec/hyd):	1x Sidepower electric
Sternthruster (Brand, type, elec/hyd):	1x Sidepower electric
Water pressure pump (Brand, model):	Paragon Junior PJR
Hot water system:	Seaward S1200, 42L
Macerator pump:	Sealand
Trim system:	Bennet trimtab 3812

Electrical system

DC system (V) AC system (V):	12V/220V
Battery charger (V/W/Amp):	Victron 12V/2000W/80AMP + 2x Victron Blue smart charger 12V/15AMP 3 outputs
Inverter (V/W/Amp):	Victron 12V/2000W/80AMP
House battery (Number of battery,type, total Amp, year):	2x Centrac MB 12V-220 (2025)
Start battery (Number of battery,type, total Amp, year):	2x Varta 12V/190Ah
Generator battery (Number of battery,type, total Amp, year):	1x optima 12V/75AMP
Sternthruster battery (Number of battery,type, total Amp, year):	1x

Safety system

Electrical bilge pump:	3x Rule 2000
Radar reflector:	1x Sestred
Fire extinguisher engine room:	1x varem
Gas detector:	1x Grundig
Horn:	Grover

Navigation system

Compass:	1x Ritchie
Gps plotter:	Raymarine C125
Radar :	Raymarine Quantum 2 (2024)
Autopilot:	Raymarine P70 + smart controller
Rudder indicator:	VDO
Log:	Raymarine I70S
Depth meter:	Raymarine I70
Wind meter :	Raymarine I70
VHF:	Raymarine Ray70
AIS:	Raymarine AIS700

Equipment

Anchor:	1x 15kg
Windlass:	Maxwell electric
Deckwash:	1x

Deck shower:

1x





















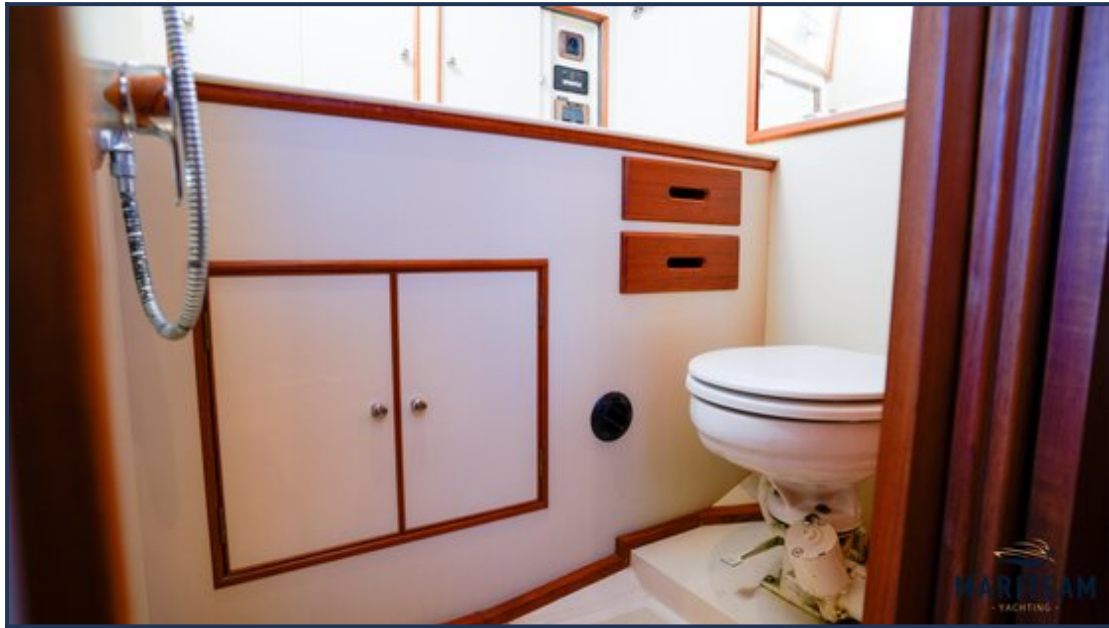


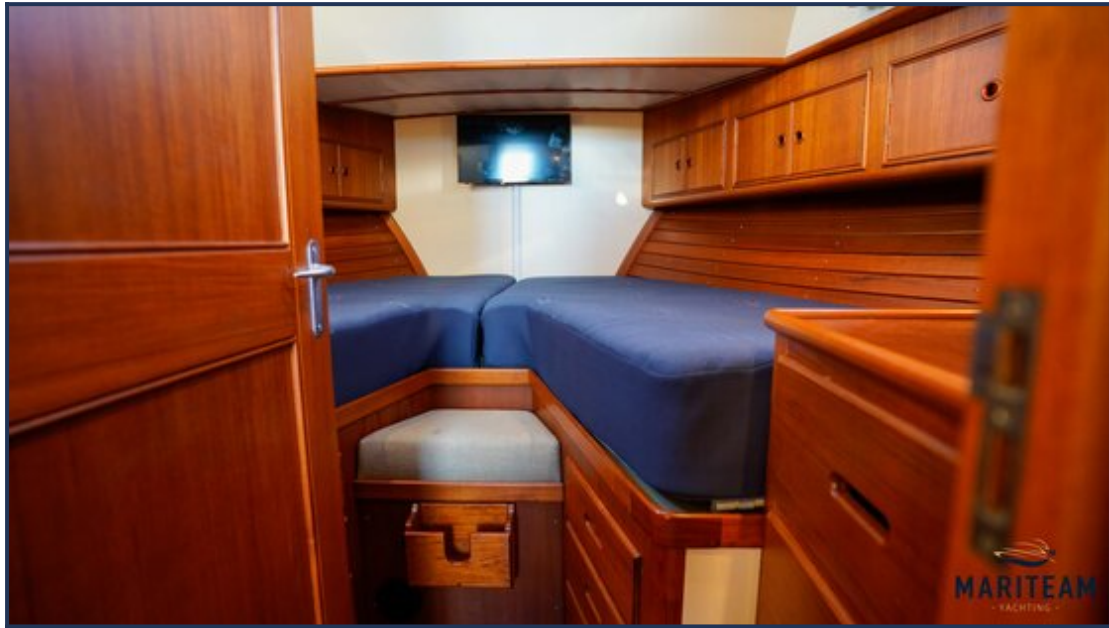








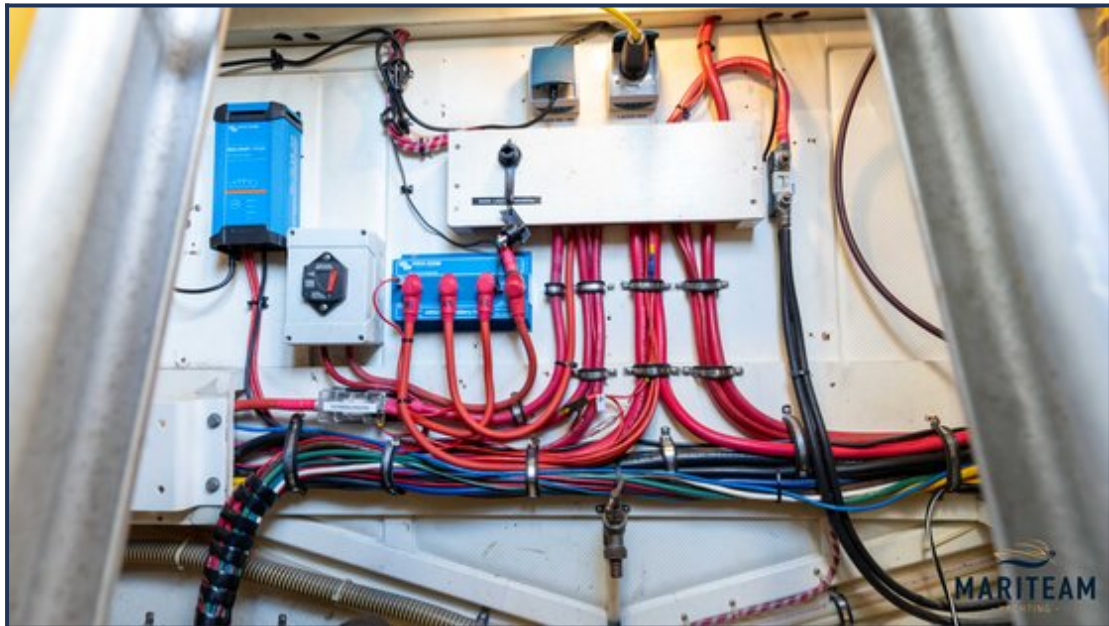
















These particulars are given in good faith as supplied but cannot be guaranteed and cannot be used for contracts.