



MARITEAM

- YACHTING -



Grand Banks 46 Motoryacht 'ILLUSION'

LOA (m):	14.35 m
Beam (m):	4.50 m
Draft (m):	1.33 m
Engines:	2x 375hp Caterpillar
Cabins:	3
Homeport:	Sales office, Heeg
Price:	€ (not set)

Welcome aboard the ILLUSION, a spacious and fully equipped Grand Banks 46 motoryacht.

MARITEAM YACHTING

De Draei 29, 8621 CZ Heeg 📍 The Netherlands 📞 Phone +31 (0) 582 889254
info@mariteamyachting.nl 🌐 www.mariteamyachting.nl

Main specifications

Model:	46 Motoryacht
LOA (m):	14.35 m
Beam (m):	4.50 m
Draft (m):	1.33 m
Year:	1990
Hull Material:	GRP
Cabins:	3
Sleeping places:	6
Number of main engine(s):	2
Power of main engine(s) (hp):	375
Brand of main engine(s):	Caterpillar
Price:	€ (not set)
VAT status:	EU paid
HIN number:	GNDF0104K091

General

Name :	Illusion
Shipyard:	American Marine Limited Singapore
Cruising speed (Kn):	9
Maximum speed (Kn):	15
Air draft (m):	4.85 top of windshield
Displacement (t):	16.33
Fuel tank (Litre and material):	2000L, RVS (renewed)
Freshwater Tank (Liter and material):	1043L, aluminium
Black water tank (Litre and material):	1x GRP
Hull material:	GRP

Superstructure material:	GRP
Deck material:	GRP
Deck finish:	Teak
Interior finish:	Teak
Window material:	Single laminated glass
Window ventilation:	Sliding and tilting windows
Antifouling (Year):	2025

Accommodation

Double bed:	3x
Showers:	3x
Toilets:	3x vacuflush
Heating system (brand, model, type):	Eberspächer D5
Airconditioning system (Brand, model):	3x Marine Air Systems reverse cycle air conditioning
Stove:	Force 10 3 burner ceramic
Refrigerator:	Isotherm Webasto
Freezer:	present
Ice cubes maker:	1x U-line (defect)
Dish washer:	Bosch
Washing machine/Dryer:	Candy
Router:	Glomex Webboat Evo
TV:	2x Sony
Radio:	2x JVC + DAB

Machinery

Main engines control (Brand and type):	Morse
Port engine (Brand, type, hp, gearbox):	Caterpillar, 3208 TA, 375pk
Engine hours port engine:	3642 august 2025
Star engine (Brand, type, hp, gearbox):	Caterpillar, 3208 TA, 375pk
Engine hours starboard engine:	3642 august 2025
Steering system:	SeaStar hydraulic
Drive (Shaft, IPS, Jet):	Drive shaft
Shaft lubrication:	Shaft Seal
Prop (Number of blades, material):	2x 4 blade, brons
Generator (Brand, type, Kw):	Onan MDL4 16Kw
Generator hours:	1045 august 2025
Stabilizer system:	Koopnautic fin stabilizers, hydraulic
Bowthruster (Brand, type, elec/hyd):	Koopnautic Hydraulic
Water presure pump (Brand, model):	Jabsco Parmax HD5
Hot water system:	quick boiler 60L
Trim system:	Instatrim hydraulic

Electrical system

DC system (V) AC system (V):	12V + 230V
Battery charger (V/W/Amp):	Victron MultiPlus Compact 12/2000/80 + Sentry
Inverter (V/W/Amp):	Victron Multiplus Compact 12/2000/80
House battery (Number of battery,type, total Amp, year):	2x LCG 12V, 230Ah (2025)
Start battery (Number of battery,type, total Amp, year):	1x AW 70027 SMF 12V, 200Ah (2024) 1x AW 70027 SMF 12V, 200Ah (2022)
Generator battery (Number of battery,type, total Amp, year):	1x UniBattery start, 140Ah (2019)

Safety system

Life raft:	1x Arimar 6 persons (expired inspection)
Electrical bilge pump:	2x Rule 2000 1x Johnson
Manual bilge pump:	1x Whale Gusher 10
Fire extinguisher engine room:	3x automatisch
Search light:	Jabsco Rayline
Horn:	Fiamm

Navigation system

Compass:	2x Ritchie
Gps plotter:	2x Raymarine C80
Radar :	Raymarine
Autopilot:	Raymarine Smartpilot ST8001
Rudder indicator:	present
Log:	Raymarine Tridata ST60
Depth meter:	Raymarine Tridata ST60
Wind meter :	Raymarine ST60
VHF:	Icom 1x IC-M4239 2x IC-M100
AIS:	Raymarine AIS 700
Camera:	present

Equipment

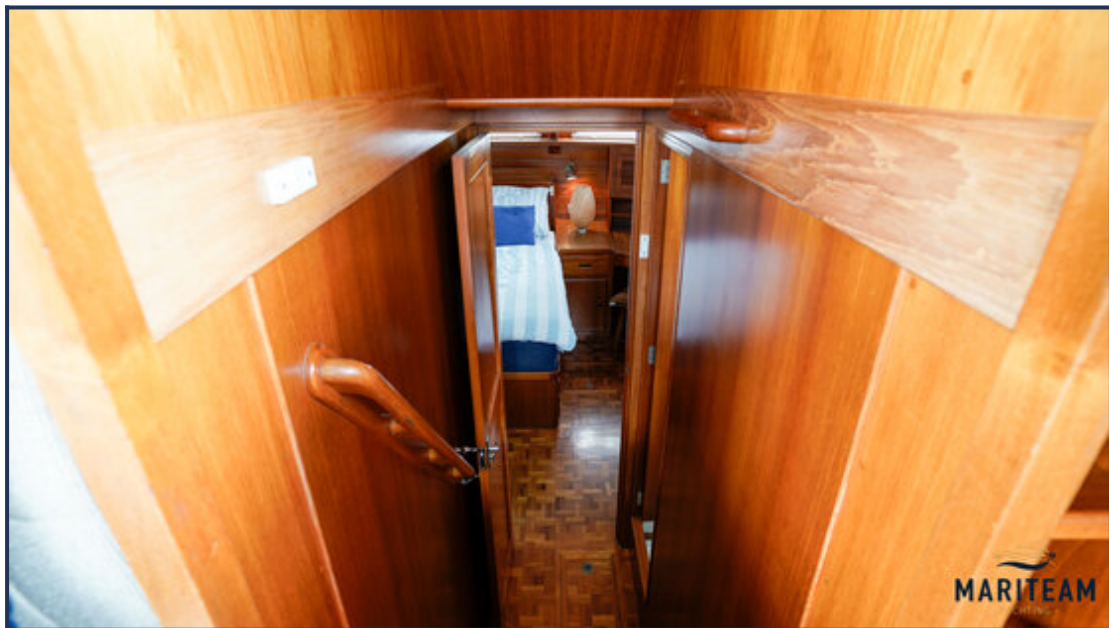
Tender:	Williams Turbojet 285
---------	-----------------------

Tender crane:	Tenderlift Hydraulic 600kg
Gangway:	Fontanel Hydraulic
Anchor:	1x with 80m chain
Windlass:	Lofrans Falkon 12V, 1500W
Deckwash:	3x
Deck shower:	1x hot and cold







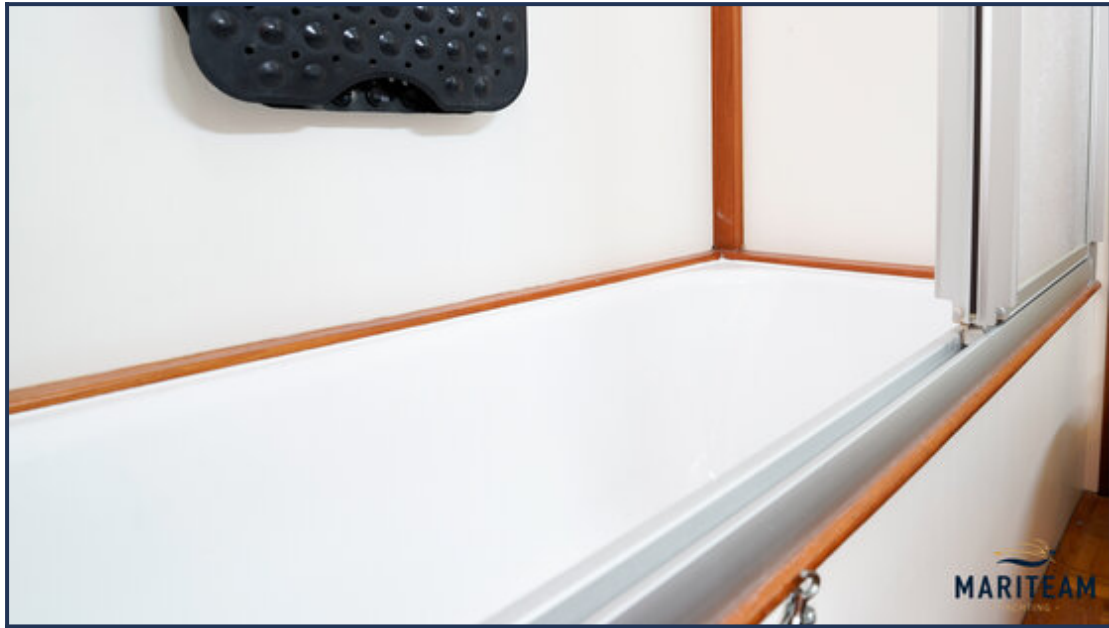


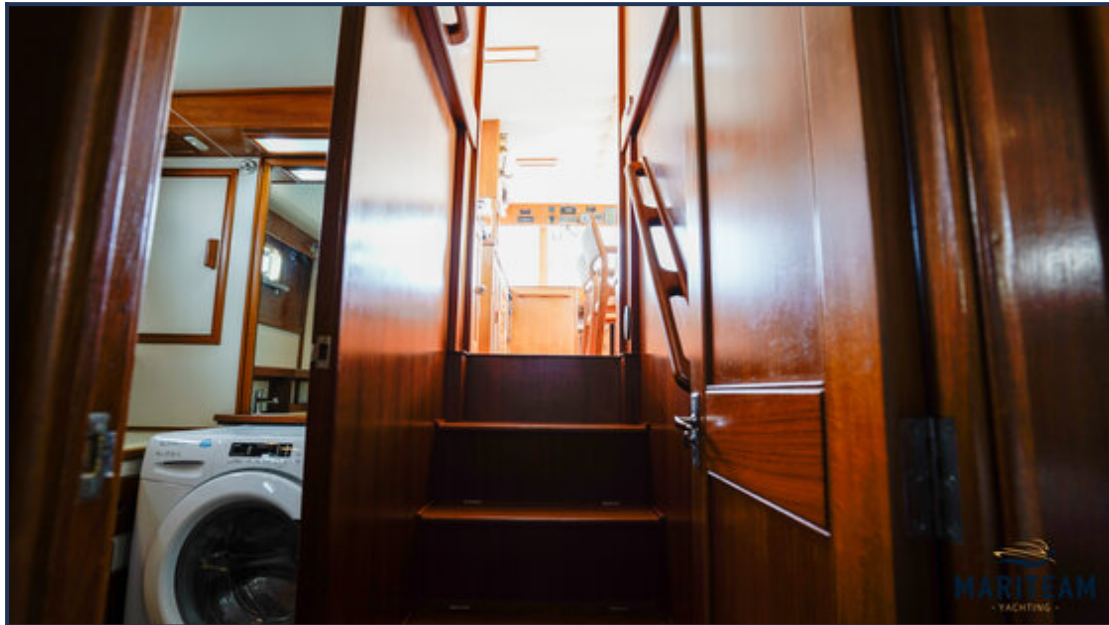


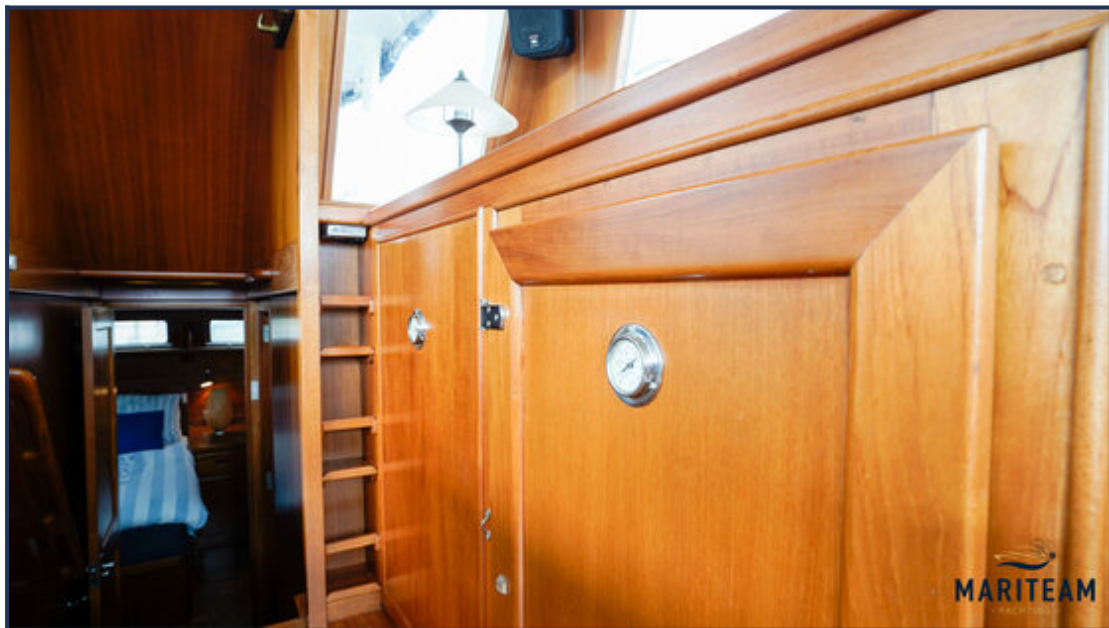












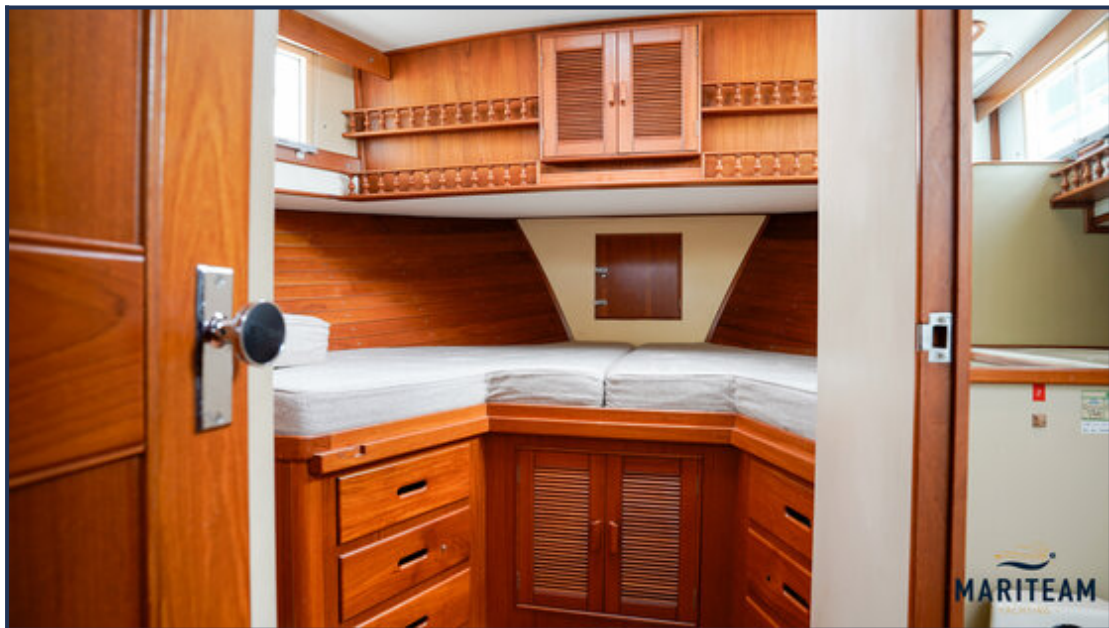






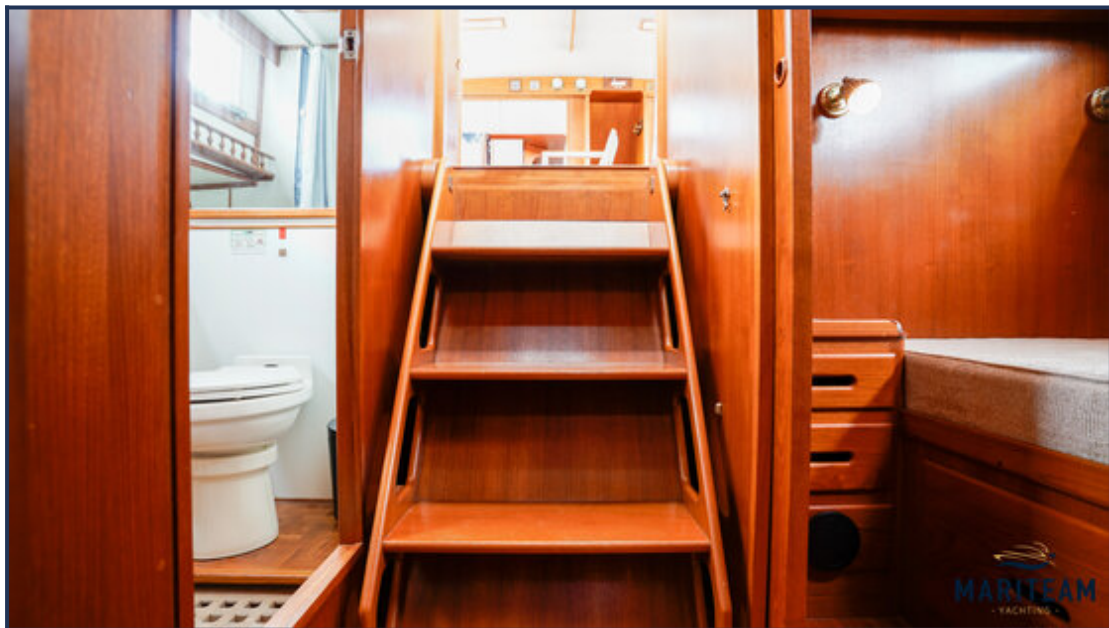




















These particulars are given in good faith as supplied but cannot be guaranteed and cannot be used for contracts.