



MARITEAM

- YACHTING -



Grand Banks 49 Motoryacht 'ORION'

LOA (m):	15.35 m
Beam (m):	4.80 m
Draft (m):	1.55 m
Engines:	2x 375hp Caterpillar
Cabins:	2
Homeport:	Sales office, Heeg
Price:	€ (not set)

The Grand Banks 49 Motoryacht 'ORION' offers ample space for extended stays on board. Living aboard is also possible and comfortable on 'ORION'.

Highlights of 'ORION' include:

- Marine Air Systems air conditioning
- Kabola central heating system
- Sea Rocq stabilizers
- Galley-down layout

MARITEAM YACHTING

De Draei 29, 8621 CZ Heeg 📍 The Netherlands 📞 Phone +31 (0) 582 889254

info@mariteamyachting.nl 🌐 www.mariteamyachting.nl

Main specifications

Model:	Grand Banks 49 Motoryacht
LOA (m):	15.35 m
Beam (m):	4.80 m
Draft (m):	1.55 m
Year:	1991
Hull Material:	GRP
Cabins:	2
Sleeping places:	4
Number of main engine(s):	2
Power of main engine(s) (hp):	375
Brand of main engine(s):	Caterpillar
Price:	€ (not set)
VAT status:	EU-paid
HIN number:	GNDE0094B191

General

Shipyard:	American Marine Singapore LTD
Cruising speed (Kn):	8 kn
Maximum speed (Kn):	16 kn
Air draft (m):	8M (with mast) 4,50m (lowered)
Displacement (t):	27,2 t
Fuel tank (Litre and material):	2x 1957L, steel
Freshwater Tank (Liter and material):	1892L, steel
Hull material:	GRP
Deck material:	GRP
Deck finish:	Teak

Interior finish:	Teak
Window material:	Single
Window ventilation:	Sliding and tilting windows

Accommodation

Cabins:	2
Double bed:	2 + 1 (dINETTE)
Single berths:	2 x
Showers:	2x
Toilets:	2x Elektrisch RM 69
Heating system (brand, model, type):	Kabola KB 45 + Marine Air Systems
Airconditioning system (Brand, model):	Marine air systems
Stove:	4-burner induction
Combi oven/microwave:	Sharp sensor & grill hot air
Refrigerator:	2x Liebherr Premium Bio Fresh
Freezer:	1x
Ice cubes maker:	1x U-Line BI95
Washing machine/Dryer:	Indesit IWDE 7145 Wash / Dry
TV:	3x
Radio:	4x

Machinery

Main engines control (Brand and type):	Dual control Morse Marine Controls
Port engine (Brand, type, hp, gearbox):	Caterpillar 3208 TA, 375 hp, Caterpillar MG 507-1
Engine hours port engine:	+ - 3400

Star engine (Brand, type, hp, gearbox):	Caterpillar 3208 TA, 375 hp, Caterpillar MG 507 - 1
Engine hours starboard engine:	+ - 3750
Steering system:	Mechanical
Drive (Shaft, IPS, Jet):	Shaft drive
Shaft lubrication:	Water lubricated
Generator (Brand, type, Kw):	Onan 16KW
Stabilizer system:	Sea Rocq stabilizers
Bowthruster (Brand, type, elec/hyd):	Parker, hydraulic
Hot water system:	Kabola KB45
Trim system:	Bennet
Trolling valve:	1x

Electrical system

DC system (V) AC system (V):	12 V / 220 V
Battery charger (V/W/Amp):	Victron Energy Quattro 12 V / 5000 VA / 220 Amp
Inverter (V/W/Amp):	Victron Energy isolation transformer 7000W
House battery (Number of battery,type, total Amp, year):	3x AGM 12 V / 220 Amp
Start battery (Number of battery,type, total Amp, year):	4x Optima 12 V / 50 AMP
Generator battery (Number of battery,type, total Amp, year):	2x Optima 12 V / 50 Amp
Galvanic isolater:	Victron Energy isolation transformer 7000 W

Safety system

Life raft:	Present, expired + TR26 SART in salon
------------	---------------------------------------

Electrical bilge pump:	Rule 2000
Manual bilge pump:	1x
Fire extinguisher engine room:	2x Solide BCV extinguisher + 1x handheld extinguisher
Search light:	RAY-LINE
Horn:	Fiamm

Navigation system

Compass:	Danforth Constellation
Gps plotter:	Philips AP navigator
Radar screen:	Furuno 1835
Radar :	Furuno RSB-0071
Autopilot:	Roberston AP45
Rudder indicator:	VDO
Depth meter:	VDO depth sounder
Wind meter :	VDO wind direction + speed
VHF:	Sailor-C4901

Equipment

Gangway:	Manual folding gangway
Anchor:	FOB anchor+ stainless steel chain
Windlass:	LOFRANS electric 12 V / 1500W
Deckwash:	On the bow
Deck shower:	1x warm and cold































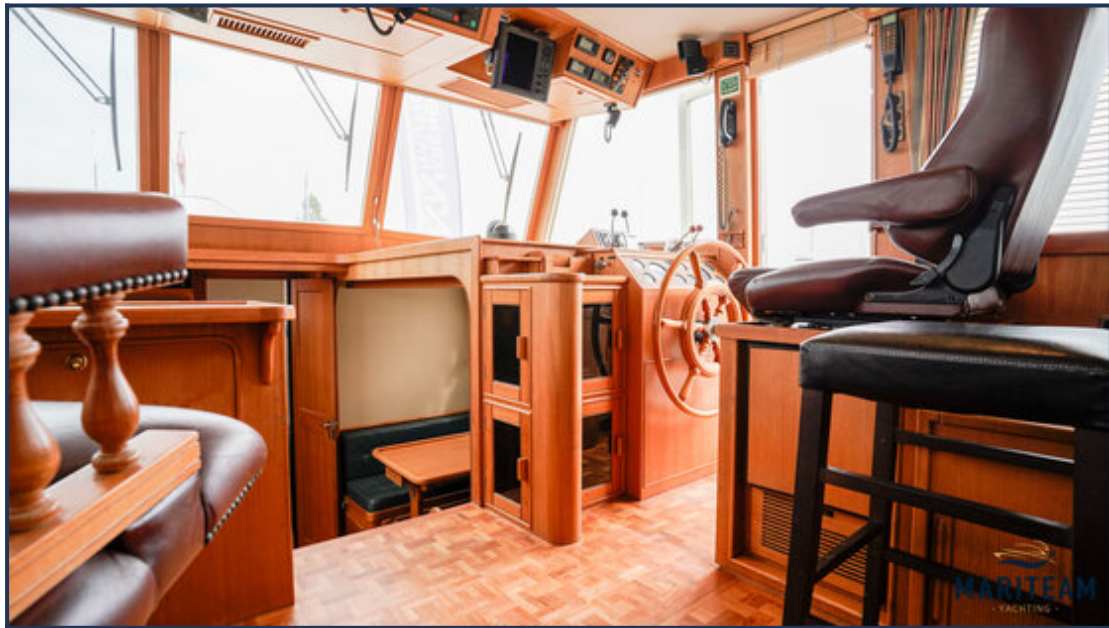












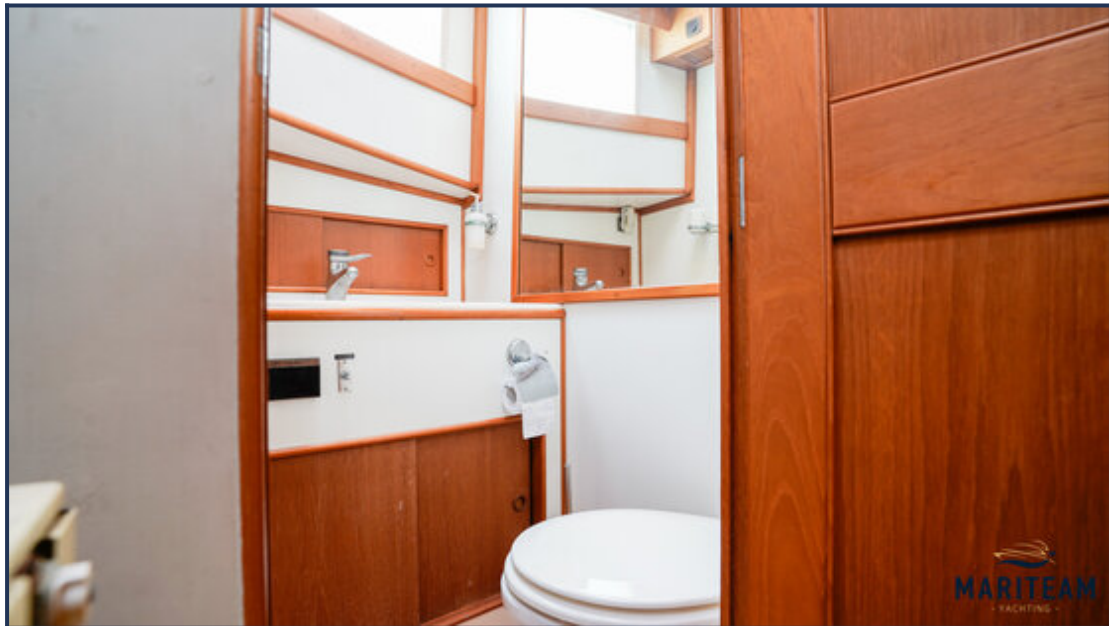


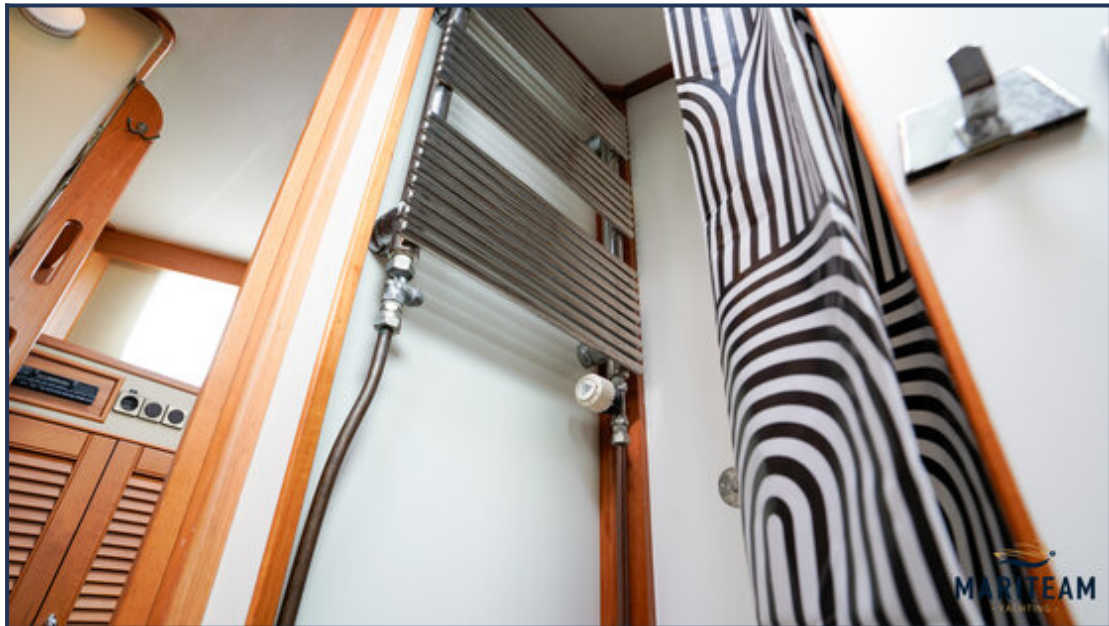


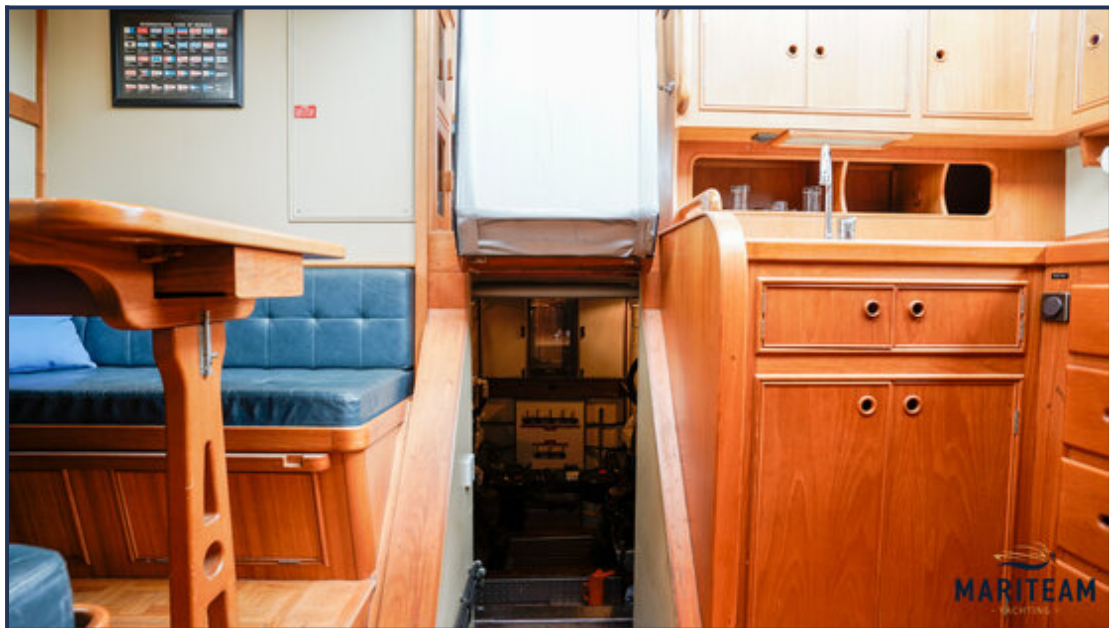




















These particulars are given in good faith as supplied but cannot be guaranteed and cannot be used for contracts.