



# MARITEAM

- YACHTING -



MARITEAM  
YACHTING

## Grand Banks 42 Motoryacht 'NULL PROBLEMO'

LOA (m):	13.17 m
Beam (m):	4.29 m
Draft (m):	1.27 m
Engines:	2x 210hp Caterpillar
Cabins:	3
Homeport:	Sales office, Heeg
Price:	€ 179,000

Welcome aboard the NULL PROBLEMO, a particularly spacious and charming Grand Banks 42 motor yacht.

This classic trawler yacht offers a comfortable and practical layout with three full-sized cabins, two bathrooms with electric and vacuum toilets, a bright salon, and a well-equipped galley-up kitchen.

**MARITEAM YACHTING**

De Draei 29, 8621 CZ Heeg 📍 The Netherlands 📞 Phone +31 (0) 582 889254

[info@mariteamyachting.nl](mailto:info@mariteamyachting.nl) 🌐 [www.mariteamyachting.nl](http://www.mariteamyachting.nl)

## Main specifications

Model:	42 Motoryacht
LOA (m):	13.17 m
Beam (m):	4.29 m
Draft (m):	1.27 m
Year:	1989
Hull Material:	GRP
Cabins:	3
Sleeping places:	6
Number of main engine(s):	2
Power of main engine(s) (hp):	210
Brand of main engine(s):	Caterpillar
Price:	€ 179,000
VAT status:	EU paid
HIN number:	GNDD1128I990

## General

Name :	Null Problemo
Shipyard:	American Marine Pte. Ltd.
Cruising speed (Kn):	9
Maximum speed (Kn):	13
Air draft (m):	4.17 top of windshield
Displacement (t):	14.8
Fuel tank (Litre and material):	2x 1135L mild steel
Freshwater Tank (Liter and material):	1x
Hull material:	GRP
Superstructure material:	GRP

Deck material:	GRP
Deck finish:	Teak
Interior finish:	Teak
Window material:	Laminated safety glass, single
Window ventilation:	Sliding and tilting windows
Antifouling (Year):	2025

## Accommodation

Cabins:	3x
Double bed:	2x
Single berths:	2x
Showers:	2x
Toilets:	1x vacuflush - 1x ocean electric
Heating system (brand, model, type):	Marine air system in main cabin
Airconditioning system (Brand, model):	Marine air system in main cabin
Stove:	Princess 3-burner
Oven:	Seaward Princess
Microwave:	Litton
Refrigerator:	1x Grunert
Freezer:	1x Grunert
Ice cubes maker:	1x U-line
Radio:	JVC

## Machinery

Main engines control (Brand and type):	Mathers MicroCommander electric
--	---------------------------------

Port engine (Brand, type, hp, gearbox):	Caterpillar 3208, 210hp
Engine hours port engine:	1019 (Juni 2025)
Star engine (Brand, type, hp, gearbox):	Caterpillar 3208, 210hp
Engine hours starboard engine:	943 (Juni 2025)
Drive (Shaft, IPS, Jet):	Drive shaft
Generator (Brand, type, Kw):	Onan 12Kw
Generator hours:	612 (Juni 2025)
Bowthruster (Brand, type, elec/hyd):	Sidepower SP95T (8hp)
Hot water system:	Raritan Boiler
Trim system:	Boat leveler

## Electrical system

DC system (V) AC system (V):	12V/220V
Battery charger (V/W/Amp):	2x Victron Energy Skylla TG 24V/25amp - 1x Victron Pallas 12V/15amp
Inverter (V/W/Amp):	1x Victron Phoenix combi 24V/2000W/50Amp
House battery (Number of battery,type, total Amp, year):	4x Varta 12V/180Ah
Start battery (Number of battery,type, total Amp, year):	2x Cartec power 60Ah/12V
Generator battery (Number of battery,type, total Amp, year):	1x Cartec power 60Ah/12V

## Safety system

Electrical bilge pump:	2x Rule industries
Manual bilge pump:	1x
Search light:	1x

Horn:	1x
-------	----

## Navigation system

Compass:	2x Danforth
Gps plotter:	1x Simrad CA50 (does not function) - 1x Simrad DS40 (does not function)
Radar :	Simrad
Autopilot:	Simrad Robertson AP20
Log:	VDO
Depth meter:	VDO (does not function)
VHF:	1x Raytheon Ray 430 - 1x Sailor

## Equipment

Tender crane:	Davids
Anchor:	1x 34kg
Windlass:	1x Lofrans Tigres
Deckwash:	1x
Deck shower:	1x















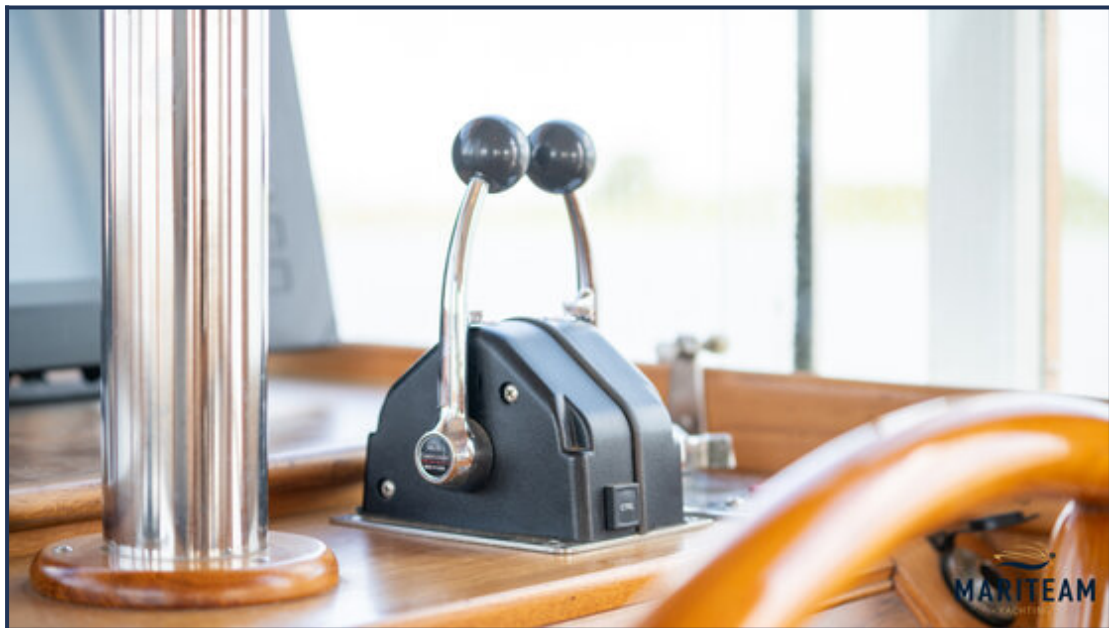
















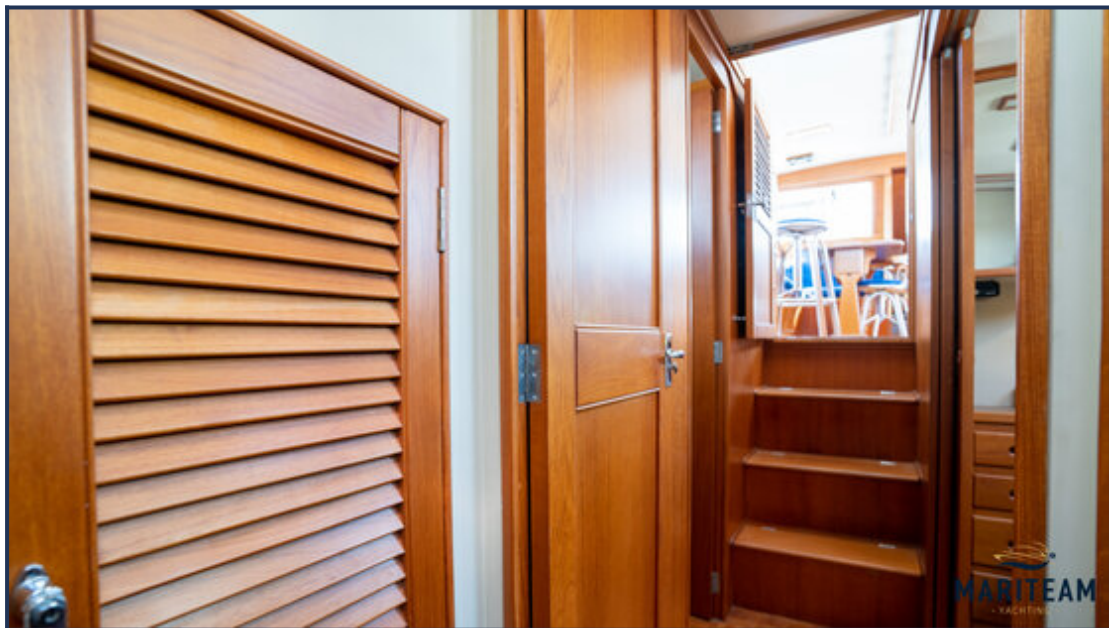
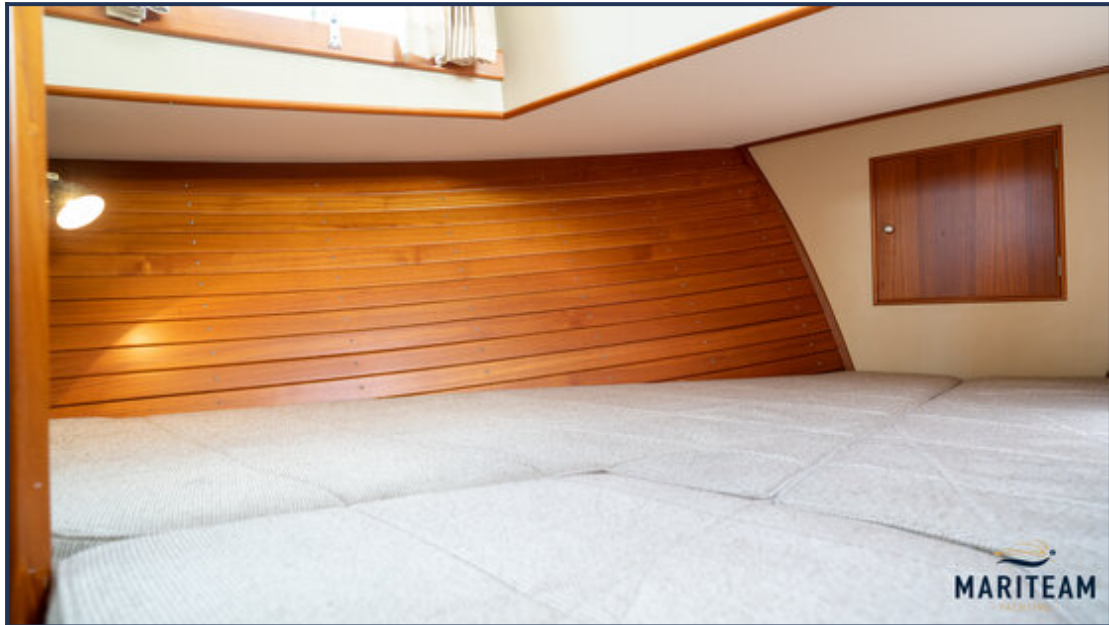




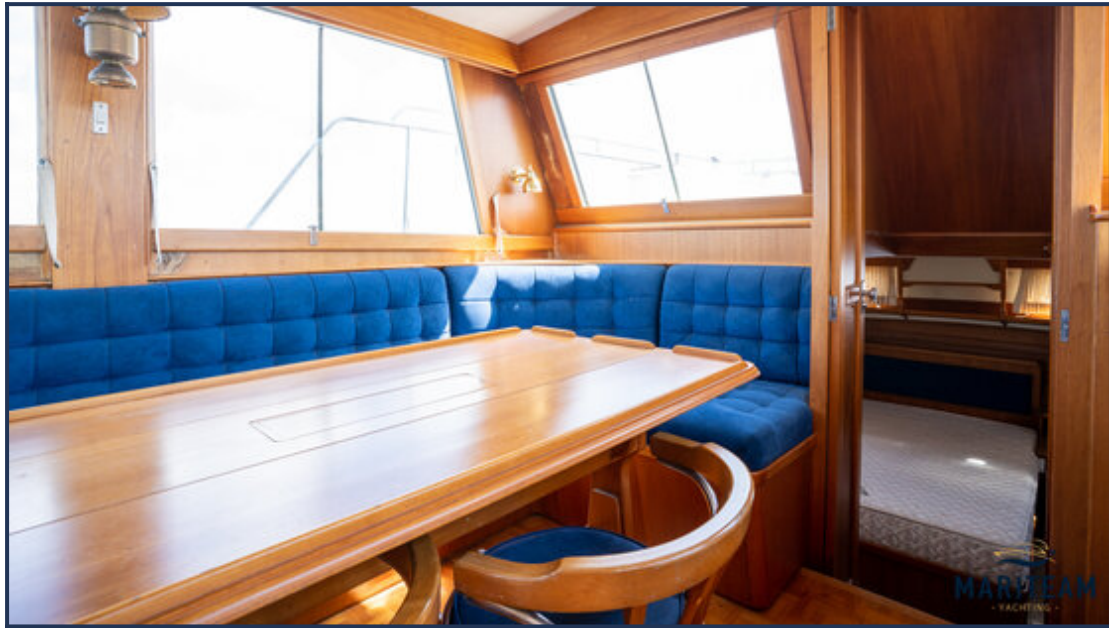






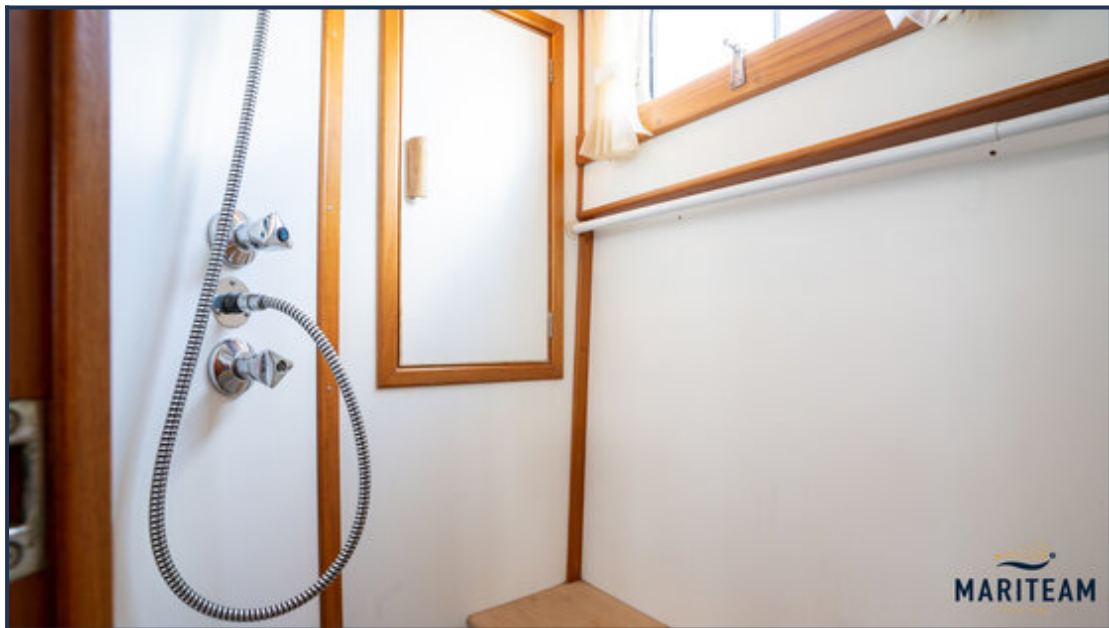




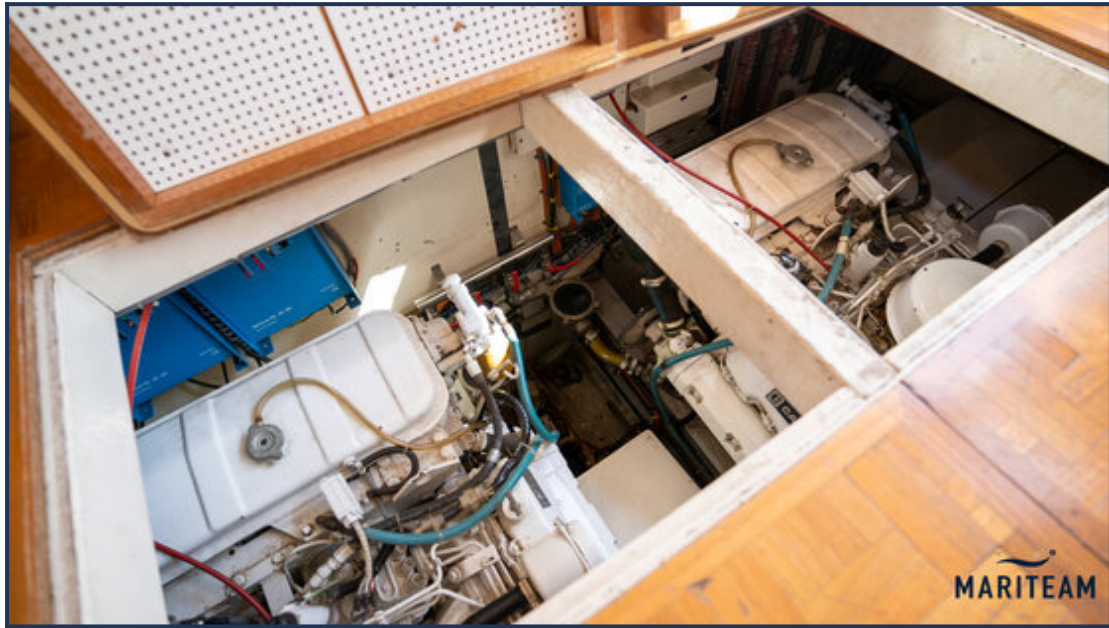






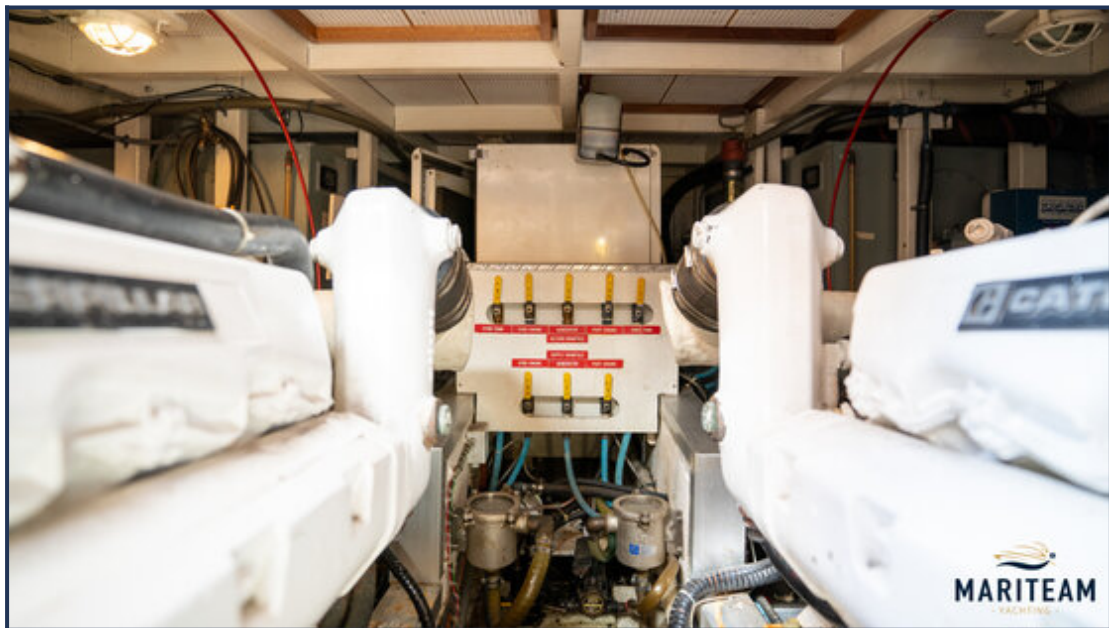














*These particulars are given in good faith as supplied but cannot be guaranteed and cannot be used for contracts.*