



MARITEAM

- YACHTING -



Grand Banks 42 Motoryacht 'WATERMAN'

LOA (m):	13.17 m
Beam (m):	4.29 m
Draft (m):	1.27 m
Engines:	2x 300hp Caterpillar
Cabins:	2
Homeport:	Elburg
Price:	€ 165,000

The WATERMAN offers a spacious layout with two cabins, two bathrooms with electric toilets, a cozy saloon with plenty of natural light, a fully equipped galley-down, and a large flybridge with ample seating.

MARITEAM YACHTING

De Draei 29, 8621 CZ Heeg 📍 The Netherlands 📞 Phone +31 (0) 582 889254
info@mariteamyachting.nl 🌐 www.mariteamyachting.nl

Main specifications

Model:	42 Motoryacht
LOA (m):	13.17 m
Beam (m):	4.29 m
Draft (m):	1.27 m
Year:	1992
Hull Material:	GRP
Cabins:	2
Sleeping places:	4
Number of main engine(s):	2
Power of main engine(s) (hp):	300
Brand of main engine(s):	Caterpillar
Price:	€ 165,000
VAT status:	EU Paid

General

Name :	Waterman
Air draft (m):	3.8
Fuel tank (Litre and material):	2270
Freshwater Tank (Liter and material):	910
Black water tank (Litre and material):	1x
Hull material:	GRP
Superstructure material:	GRP
Deck material:	GRP
Deck finish:	Teak
Interior finish:	Teak
Window material:	Laminated safety glass, single

Window ventilation:	Slide and tilt windows
Antifouling (Year):	End 2023

Accommodation

Cabins:	2x
Double bed:	1x
Single berths:	2x
Showers:	2x
Toilets:	2x electric
Heating system (brand, model, type):	Webasto Hydronic 10 CV via radiator throughout the whole ship
Stove:	4-pits electric
Combi oven/microwave:	1x

Machinery

Port engine (Brand, type, hp, gearbox):	Caterpillar 3116TA, 300pk
Engine hours port engine:	3660 (august 2025)
Star engine (Brand, type, hp, gearbox):	Caterpillar 3116 TA, 300pk
Engine hours starboard engine:	3658 (august 2025)
Drive (Shaft, IPS, Jet):	Drive shaft
Generator (Brand, type, Kw):	Onan Marine Generator 6.5kW
Bowthruster (Brand, type, elec/hyd):	Vetus electric
Hot water system:	boiler ca. 30 liter

Electrical system

DC system (V) AC system (V):	12 + 24 + 230 Volt
Battery charger (V/W/Amp):	Mastervolt Chargemaster 12V / 70Amp
Inverter (V/W/Amp):	Sinergex 500
House battery (Number of battery,type, total Amp, year):	2x
Start battery (Number of battery,type, total Amp, year):	2x

Navigation system

Compass:	Via plotter
Gps plotter:	Raymarine C120
Radar :	Furuno
Autopilot:	Robertson AP200DL
Log:	Via plotter
Depth meter:	Raymarine ST60
VHF:	Icom IC-M505 + Simrad HT50 handheld

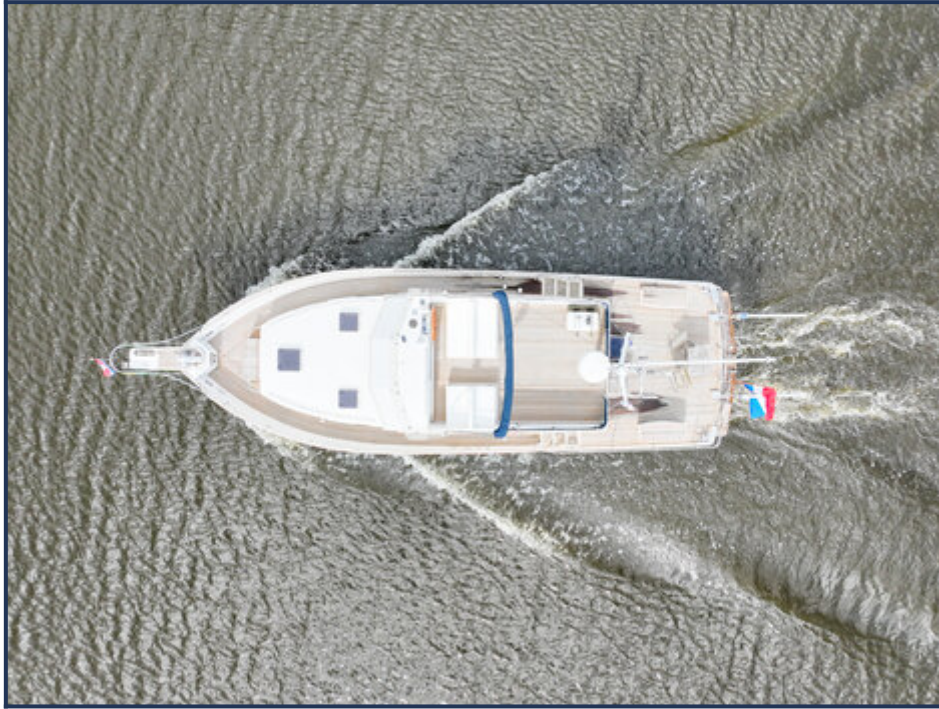
Equipment

Anchor:	1x
Windlass:	Lofrans electric
Deckwash:	1x
Deck shower:	1x





















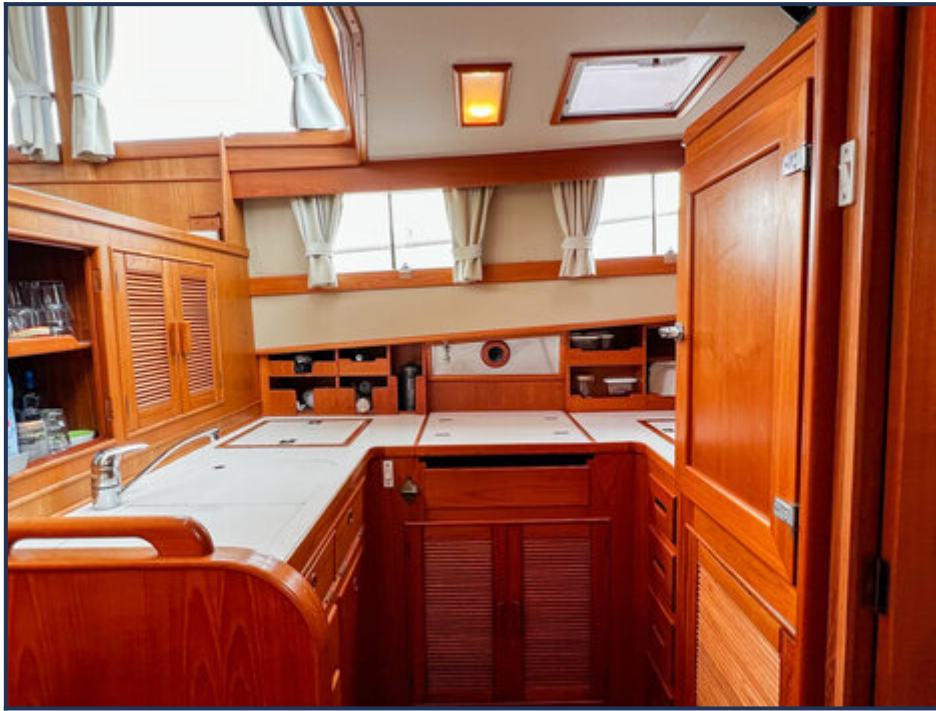




















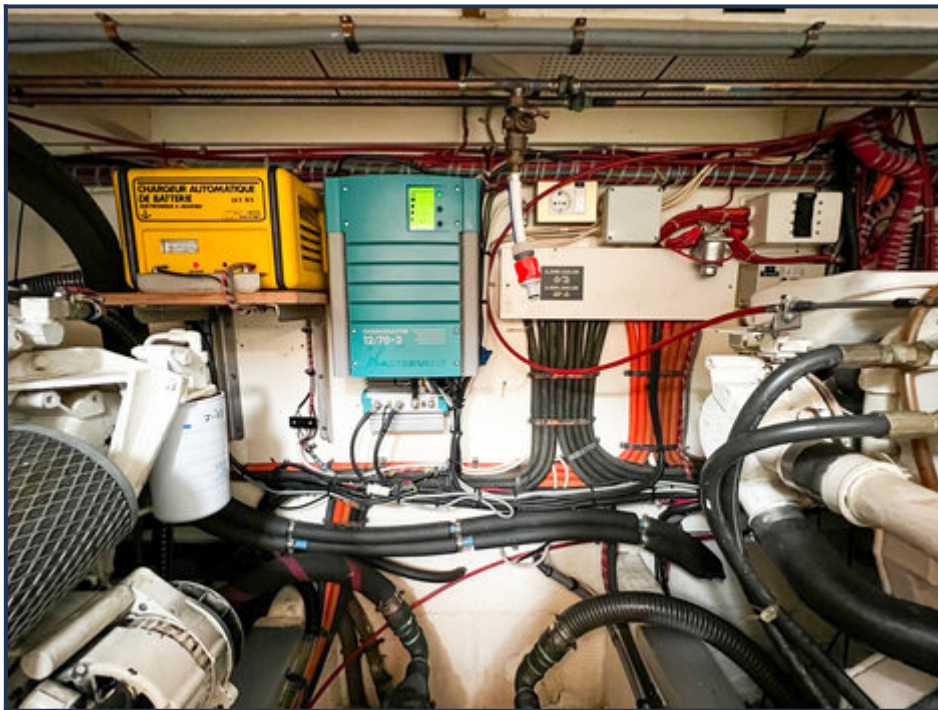
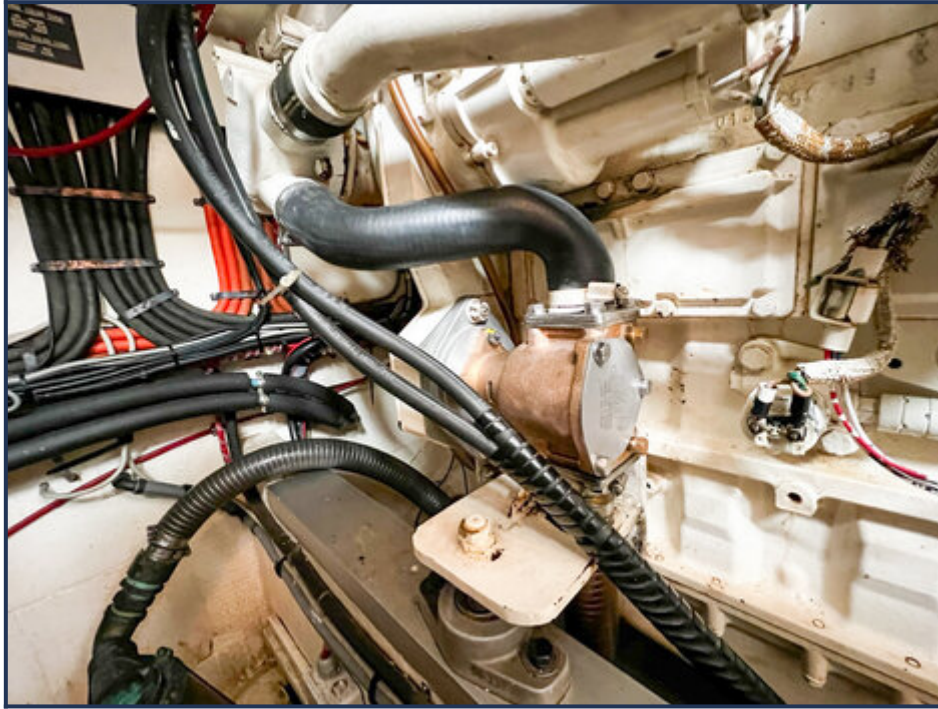
















These particulars are given in good faith as supplied but cannot be guaranteed and cannot be used for contracts.