



MARITEAM

- YACHTING -



Sabre 40 sedan 'YANKEE'

LOA (m):	14.10 m
Beam (m):	4.29 m
Draft (m):	1.02 m
Engines:	2x 380hp Cummins
Cabins:	2
Homeport:	Sales office, Heeg
Price:	€ (not set)

The Sabre 40 Sedan 'YANKEE' is a unique and well-maintained Down East Cruiser with a sought-after layout.

Some highlights of the 'YANKEE':

- Newly upholstered both inside and out (2026)
- Extensive maintenance of main engines, drives, and generator (all service parts replaced) 2025)
- Electric sunshade above cockpit (2024)
- Siemens Isensoric Wash/Dry (2024)
- Ocean Air Blinds
- Advanced joystick and Zeus pod drive

MARITEAM YACHTING

De Draei 29, 8621 CZ Heeg 📍 The Netherlands 📞 Phone +31 (0) 582 889254

info@mariteamyachting.nl 📧 www.mariteamyachting.nl



MARITEAM

- YACHTING -

MARITEAM YACHTING

De Draei 29, 8621 CZ Heeg 📍 The Netherlands 📞 Phone +31 (0) 582 889254
info@mariteamyachting.nl 🌐 www.mariteamyachting.nl

Main specifications

Model:	Sabre 40 Sedan
LOA (m):	14.10 m
Beam (m):	4.29 m
Draft (m):	1.02 m
Year:	2010
Hull Material:	GRP
Cabins:	2
Sleeping places:	4
Number of main engine(s):	2
Power of main engine(s) (hp):	380
Brand of main engine(s):	Cummins
Price:	€ (not set)
VAT status:	Paid
HIN number:	US-HWSL-4017B010
Year launched:	2010

General

Name :	YANKEE
Shipyard:	Sabre Yachts Raymond Marine
CE-category:	B
Maximum speed (Kn):	32kn
Air draft (m):	4.80 m
Displacement (t):	11,8 ton
Fuel tank (Litre and material):	2x 727L Aluminum
Freshwater Tank (Liter and material):	530L, GRP
Black water tank (Litre and material):	227L, GRP

Grey water tank (Litre and material):	227L
Hull material:	GRP
Superstructure material:	GRP
Deck material:	GRP
Deck finish:	cockpit: teak, gangways: non-slip
Interior finish:	Cherry
Window material:	Single
Window ventilation:	Sliding windows
Antifouling (Year):	2024/2025

Accommodation

Cabins:	1 + 1 (dinette)
Double bed:	2 + 2 (dinette)
Showers:	1x Grohe
Toilets:	1x Bemis electric
Heating system (brand, model, type):	Webasto Airtop EVO 55 - Hot air (2021)
Airconditioning system (Brand, model):	Marine air systems
Stove:	K&H 2-burner induction
Combi oven/microwave:	Tappan Combi
Refrigerator:	2x vitrifrigo RF-serie
Freezer:	Isoterm
Washing machine/Dryer:	Siemens Isensoric wash / dry (2024)
Radio:	Clarion marine series

Machinery

Main engines control (Brand and type):	Smart craft DTS + joystick
Port engine (Brand, type, hp, gearbox):	Cummins QSB 5.9
Engine hours port engine:	+ - 810 (08/2025)
Star engine (Brand, type, hp, gearbox):	Cummins QSB 5.9
Engine hours starboard engine:	+ - 810 (08/2025)
Steering system:	Hydraulic
Drive (Shaft, IPS, Jet):	Cummins Zeus pods
Prop (Number of blades, material):	6 blade
Generator (Brand, type, Kw):	Cummins Onan Marine Generator 9KW
Generator hours:	+ - 374
Water pressure pump (Brand, model):	jabsco PAR - MAX 4
Hot water system:	Kuuma 41L boiler
Trim system:	Cummins Zeus
Oil change system:	Reverso 12V

Electrical system

DC system (V) AC system (V):	12V / 220V
Battery charger (V/W/Amp):	Victron Energy 12V / 120 amp + 1x Mastervolt Chargemaster plus 12v / 50-3
Inverter (V/W/Amp):	1x Victron Energy 12v / 3000va / 120amp
House battery (Number of battery,type, total Amp, year):	2x Mastervolt gel accu 12v 200AH (2024)
Start battery (Number of battery,type, total Amp, year):	2x Optima 12V / 75 AH AGM (2025)
Generator battery (Number of battery,type, total Amp, year):	1x AGM 12V/ 75AH (2025)

Safety system

Electrical bilge pump:	Rule 2000
Fire extinguisher engine room:	Automatic and handhelds
High water alarm:	1x Rule
Fire alarm:	present
Gas detector:	present
Search light:	ACR RCL- 75
Horn:	Fiamm a-23, electric

Navigation system

Compass:	1x Ritchie
Gps plotter:	2x Raymarine Axiom XL16 (2020)
Radar screen:	2x Raymarine Axiom XL16 (2020)
Radar :	Raymarine Magnum 4KW (2020)
Rudder indicator:	On plotter
Depth meter:	Raymarine i70s (2020)
VHF:	Raymarine ray mic 60/ 70 (2020)
AIS:	Raymarine AIS 950 (2020)

Equipment

Anchor:	Simson Lawrence Delta + SS chain
Windlass:	Lewmar electric
Deckwash:	1x
Deck shower:	1x twist, hot + cold











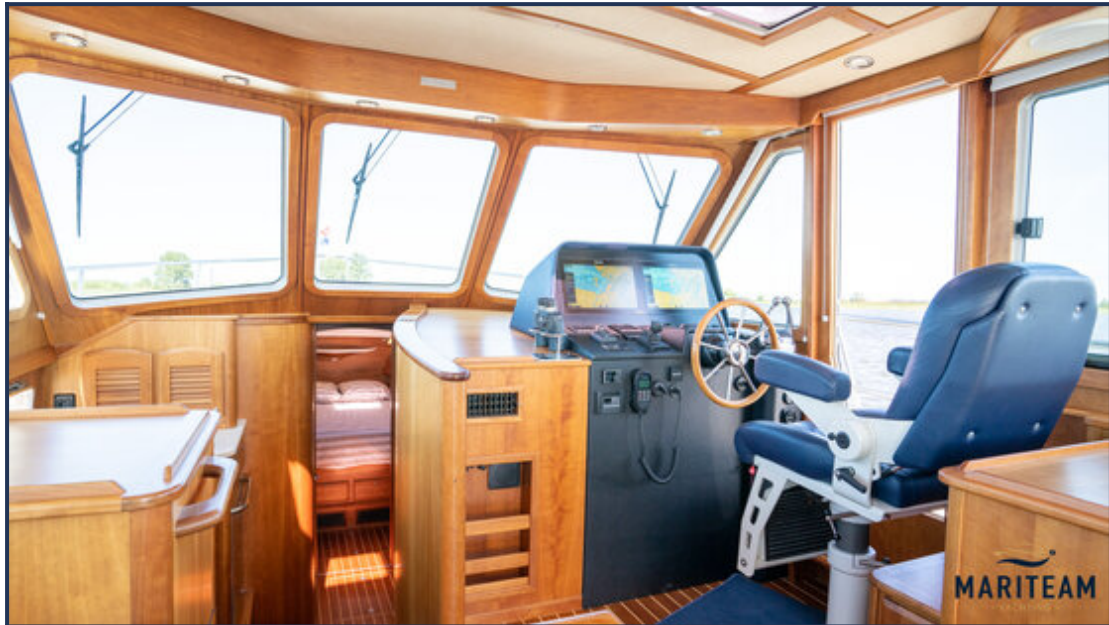


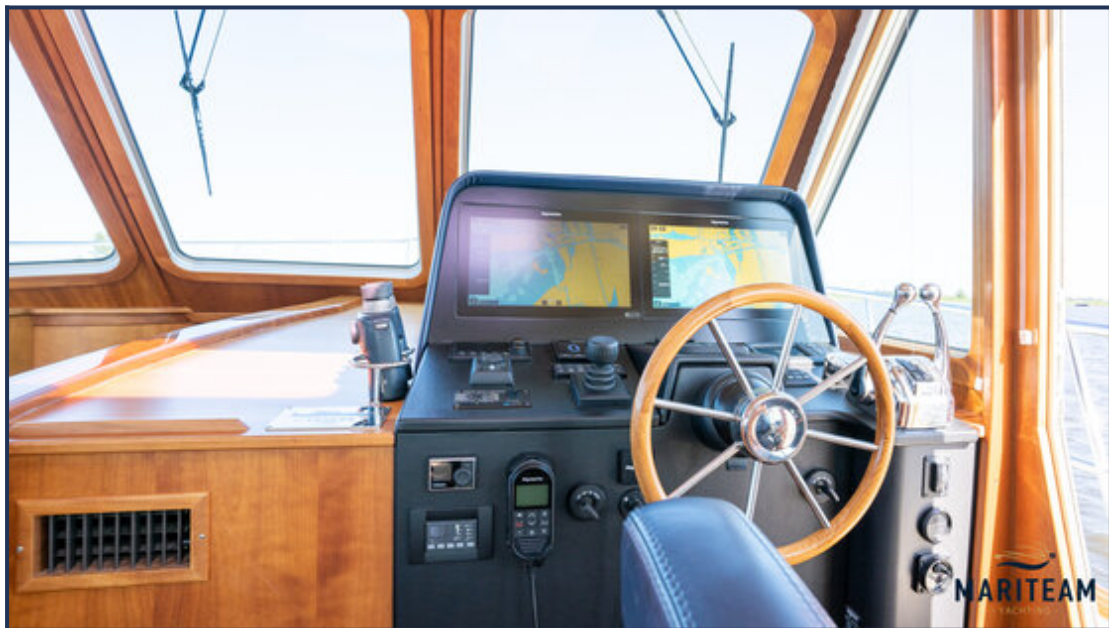


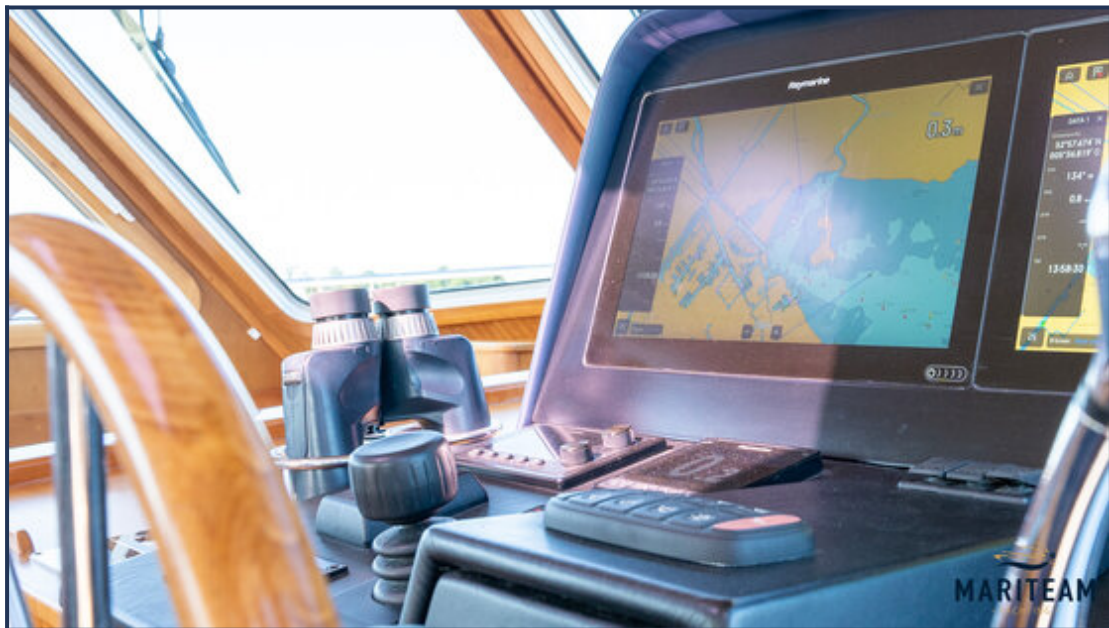










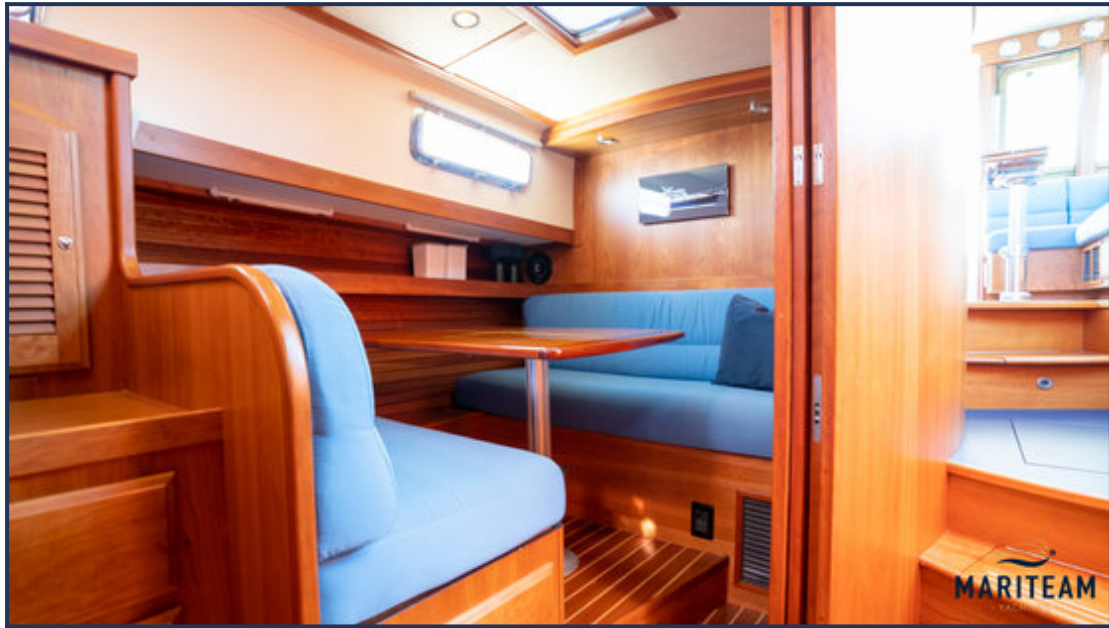


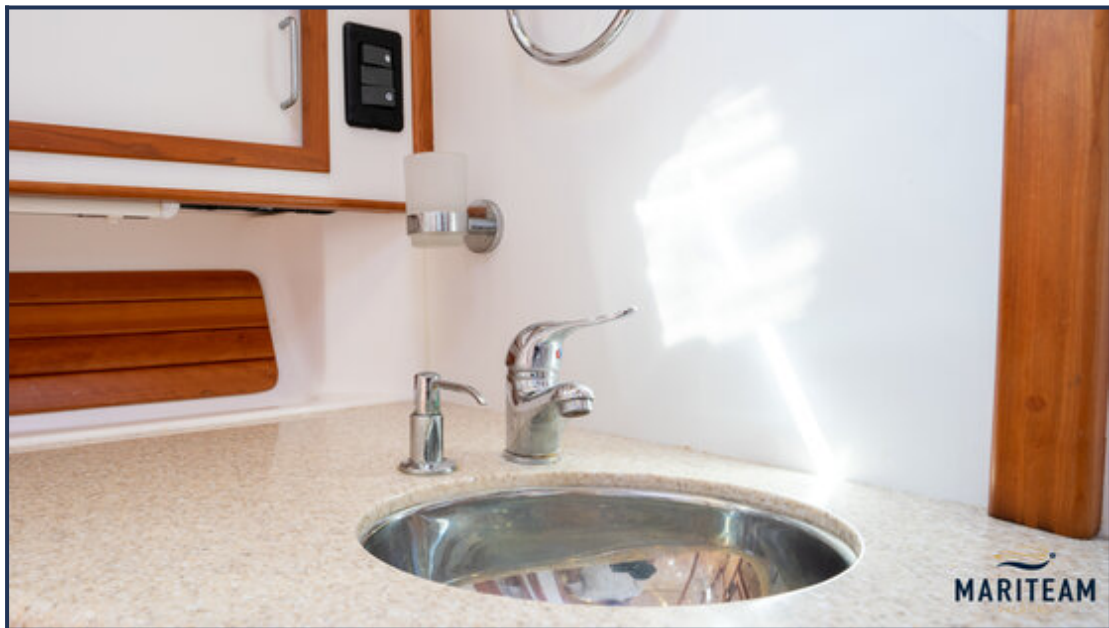


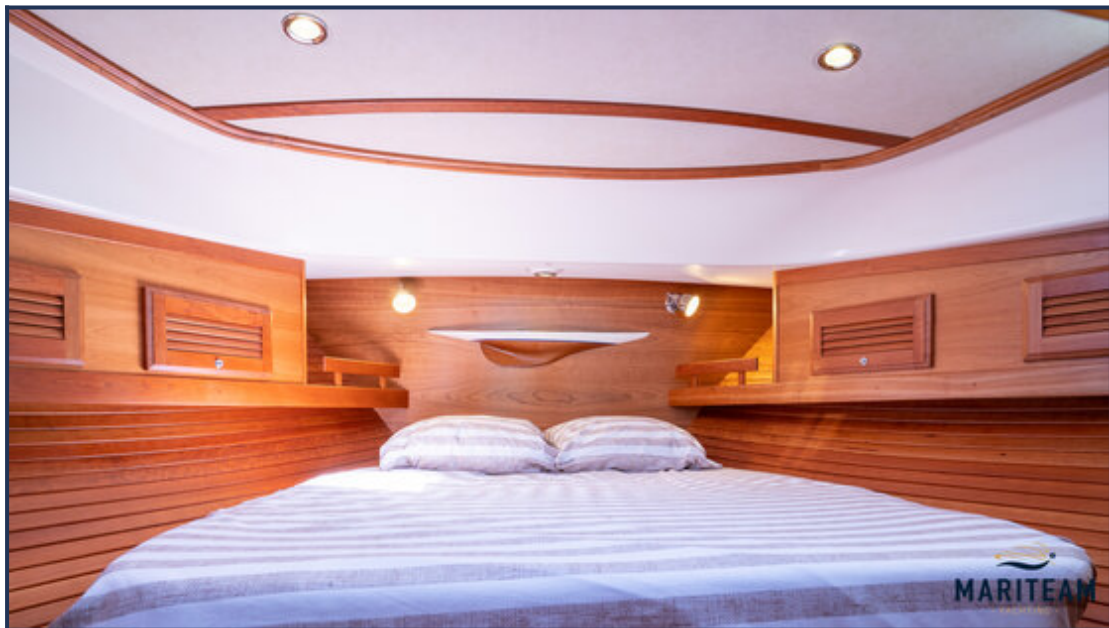








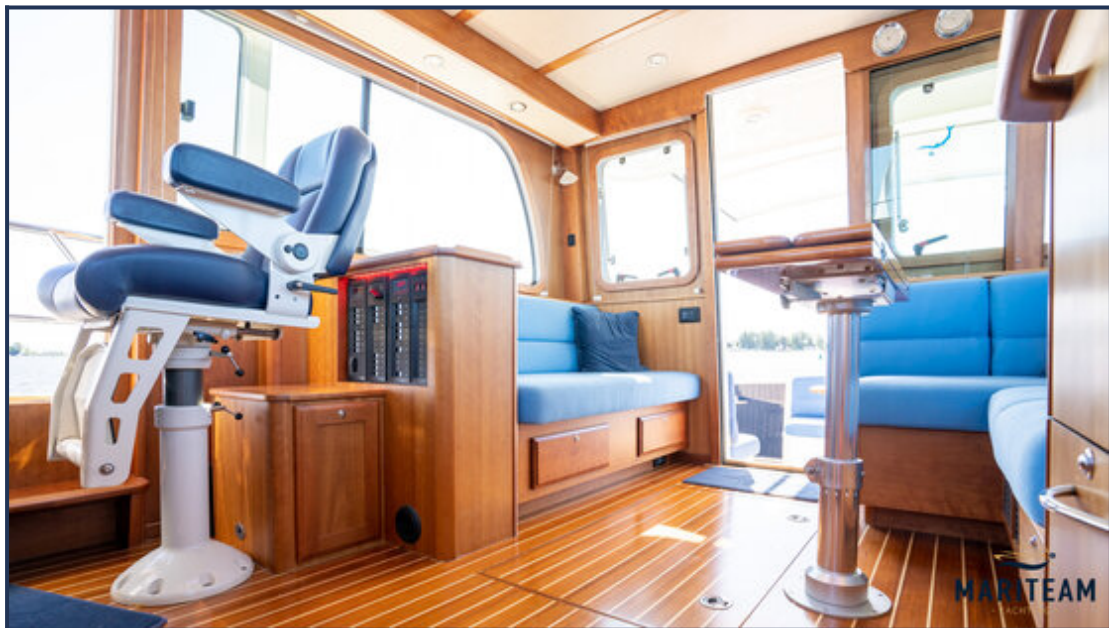


















These particulars are given in good faith as supplied but cannot be guaranteed and cannot be used for contracts.