



# MARITEAM

- YACHTING -



## Pilot 44 'JOSEPHINE'

|            |                   |
|------------|-------------------|
| LOA (m):   | 13.70 m           |
| Beam (m):  | 4.00 m            |
| Draft (m): | 1.4 m             |
| Engines:   | 1x 120hp Iveco    |
| Cabins:    | 2                 |
| Homeport:  | Heeg, Netherlands |
| Price:     | € (not set)       |

This robust and timeless Pilot 44 from 1998, named 'JOSEPHINE', combines seaworthiness with onboard comfort. With a unique layout, 'JOSEPHINE' offers additional saloon and galley space, making this Pilot 44 perfect for both long cruises and relaxing weekend getaways. The second helm station on the aft deck offers excellent visibility while maneuvering and a unique position for sailing outdoors. The Kabola central heating system provides comfortable warmth, even on cooler days. The Pilot 44 'JOSEPHINE' is an excellent choice for those seeking quality, character, and boating pleasure all rolled into one.

### MARITEAM YACHTING

De Draei 29, 8621 CZ Heeg 📍 The Netherlands 📞 Phone +31 (0) 582 889254  
[info@mariteamyachting.nl](mailto:info@mariteamyachting.nl) 🌐 [www.mariteamyachting.nl](http://www.mariteamyachting.nl)

## Main specifications

|                               |             |
|-------------------------------|-------------|
| Model:                        | 44          |
| LOA (m):                      | 13.70 m     |
| Beam (m):                     | 4.00 m      |
| Draft (m):                    | 1.4 m       |
| Year:                         | 1998        |
| Hull Material:                | Steel       |
| Cabins:                       | 2           |
| Sleeping places:              | 4           |
| Number of main engine(s):     | 1           |
| Power of main engine(s) (hp): | 120         |
| Brand of main engine(s):      | Iveco       |
| Price:                        | € (not set) |
| VAT status:                   | EU paid     |
| Year launched:                | 1998        |

## General

|                                       |                                   |
|---------------------------------------|-----------------------------------|
| Name :                                | JOSEPHINE                         |
| Shipyard:                             | VDL Shipyards B.V.                |
| Cruising speed (Kn):                  | 6kn                               |
| Maximum speed (Kn):                   | 9kn                               |
| Air draft (m):                        | 4.50m (mast up) 3.15m (mast down) |
| Displacement (t):                     | 17t                               |
| Fuel tank (Litre and material):       | 1600l, steel                      |
| Freshwater Tank (Liter and material): | 900l, steel                       |
| Hull material:                        | Steel                             |
| Superstructure material:              | Steel                             |

|                     |  |
|---------------------|--|
| Deck material:      | Steel                                      |
| Deck finish:        | Antislip artificial teak                   |
| Interior finish:    | Beukenhout                                 |
| Window material:    | Dubble glass upperdeck, single glass below |
| Window ventilation: | Tilt windows with mosquito screens         |
| Antifouling (Year): | 04/2025                                    |

## Accommodation

|                                      |                          |
|--------------------------------------|--------------------------|
| Cabins:                              | 2x                       |
| Double bed:                          | 1x                       |
| Single berths:                       | 2x                       |
| Showers:                             | 1x                       |
| Toilets:                             | 2x                       |
| Heating system (brand, model, type): | Kabola B12 CV            |
| Stove:                               | 4-burner gas, Pinflow    |
| Microwave:                           | Magnetron MCCD 1820 Duo  |
| Refrigerator:                        | LG                       |
| Freezer:                             | 2x compartment in fridge |
| Washing machine/Dryer:               | Bauknecht WT9840         |
| TV:                                  | 1x Sharp Aquos           |
| Radio:                               | Philips, CD              |

## Machinery

|  |                                      |
|--|--------------------------------------|
| Main engines control (Brand and type): | Mechanic                             |
| Motor:                                 | Iveco 8061M12, Marine Gearbox RM50A2 |

|                                      |                  |
|--------------------------------------|------------------|
| Motor hours:                         | + -1700          |
| Steering system:                     | Hydraulic        |
| Drive (Shaft, IPS, Jet):             | Shaft drive      |
| Shaft lubrication:                   | Water lubricated |
| Prop (Number of blades, material):   | 4-blade          |
| Bowthruster (Brand, type, elec/hyd): | 8hp, electric    |
| Water pressure pump (Brand, model):  | Jabsco           |
| Hot water system:                    | Kabola           |
| Macerator pump:                      | Jabsco           |

## Electrical system

|  |   |
|--|---|
| DC system (V) AC system (V):                             | 12V / 24V / 230V                                    |
| Battery charger (V/W/Amp):                               | Victron MultiPlus-II 24v / 3000va / 70amp (04/2025) |
| Inverter (V/W/Amp):                                      | Victron MultiPlus-II 24v / 3000va / 70amp (04/2025) |
| House battery (Number of battery,type, total Amp, year): | 4x 24v / 200ah AGM (2019)                           |
| Start battery (Number of battery,type, total Amp, year): | 2x 24v / 180ah LMFM (04/2025)                       |
| Galvanic isolater:                                       | Victron (04/2025)                                   |

## Safety system

|       |          |
|-------|----------|
| Horn: | Electric |
|-------|----------|

## Navigation system

|                   |                          |
|-------------------|--------------------------|
| Compass:          | Simrad DatalineX Compass |
| Gps plotter:      | Simrad NX45              |
| Radar screen:     | SimradNX45               |
| Radar :           | Simrad                   |
| Autopilot:        | Simrad AP21              |
| Rudder indicator: | Simrad DatalineX Rudder  |
| Log:              | Simrad                   |
| Depth meter:      | Simrad                   |
| VHF:              | Shipmate RS8300          |
| AIS:              | reciever, Advansea       |

## Equipment

|              |                             |
|--------------|-----------------------------|
| Anchor:      | CQR Delta                   |
| Windlass:    | Lewmar, electric 55mm steel |
| Deck shower: | Hot + Cold                  |





















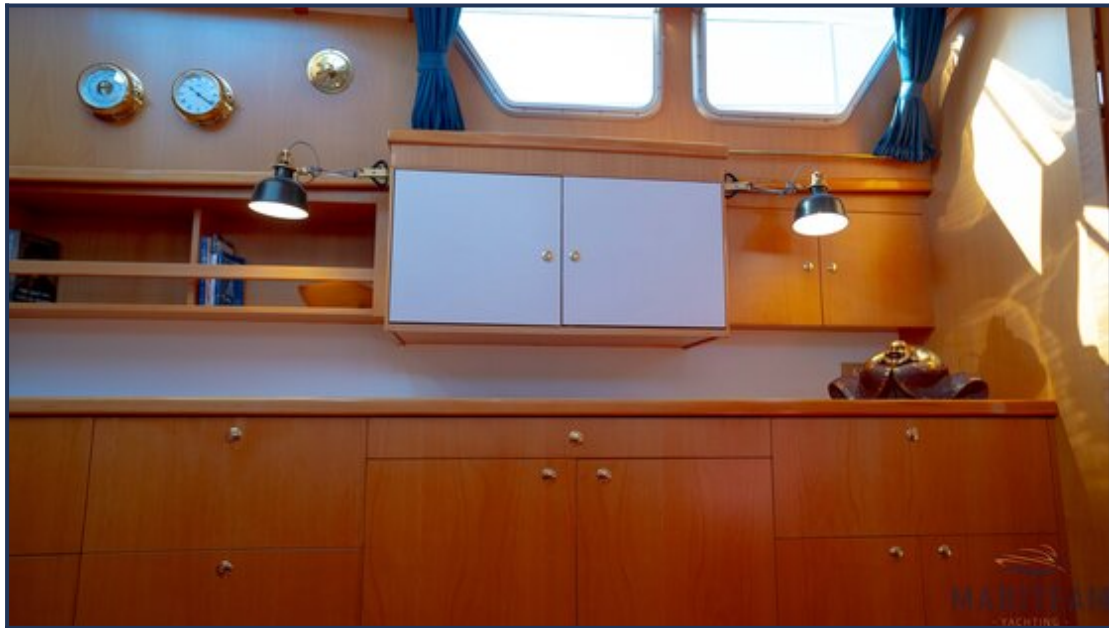






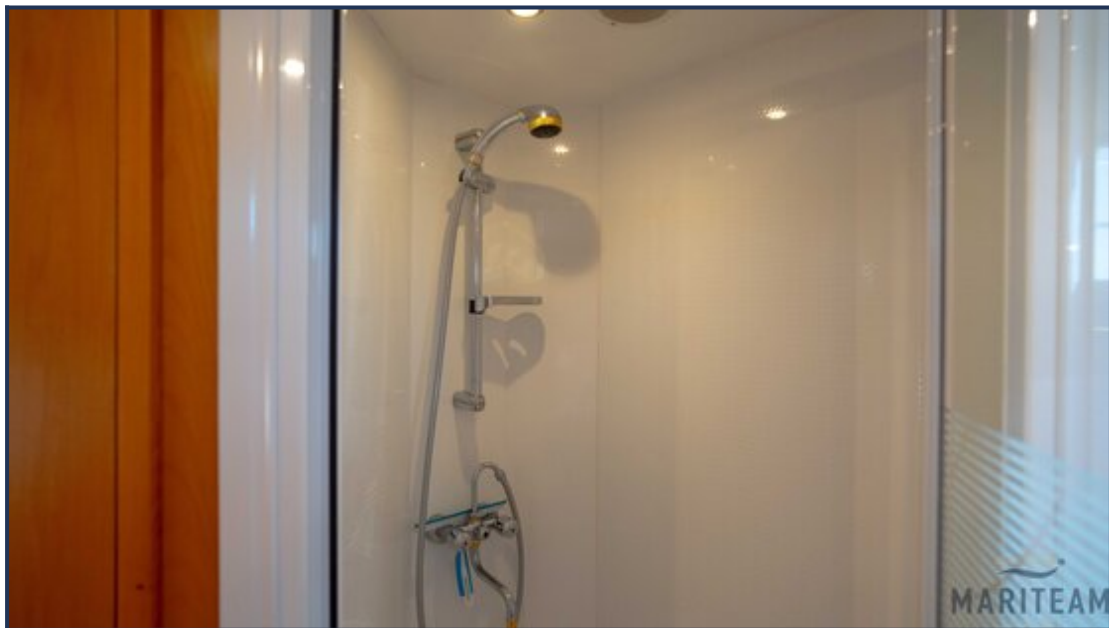






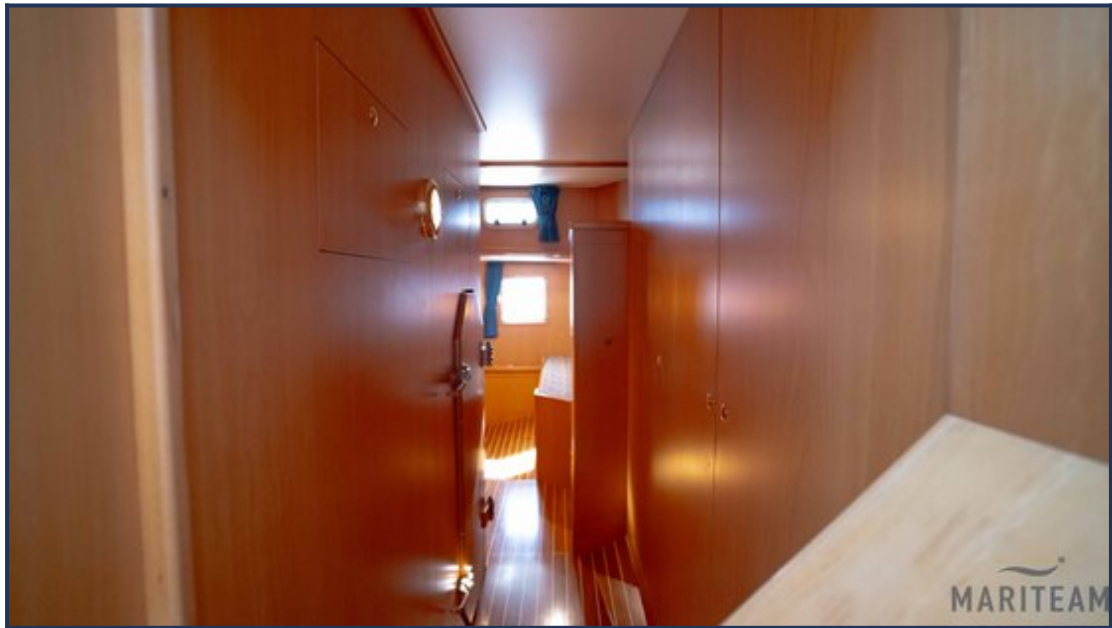








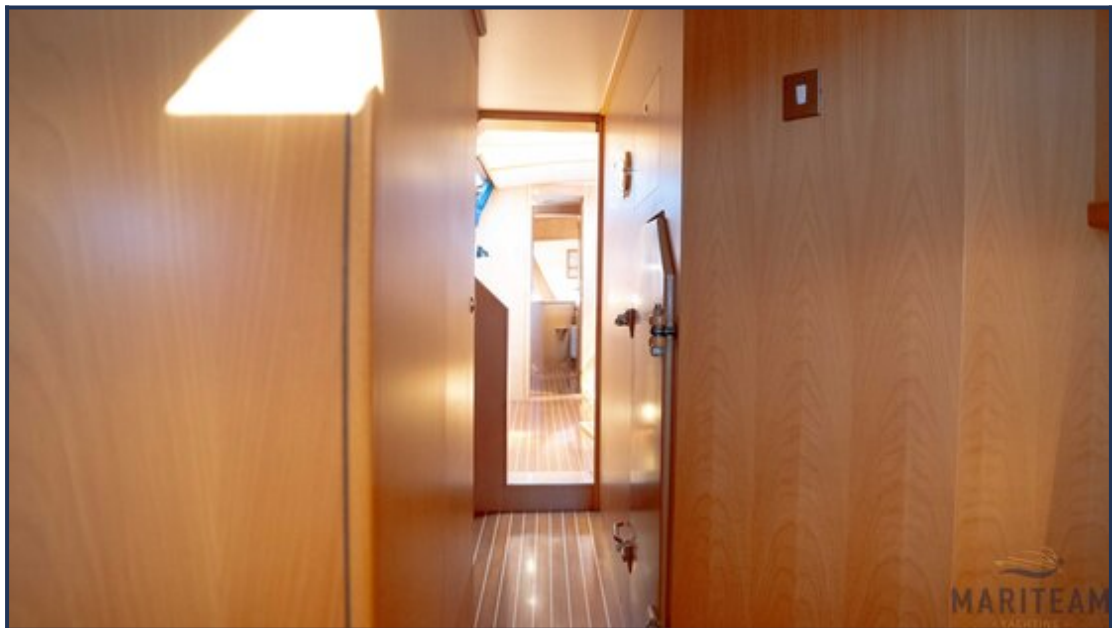
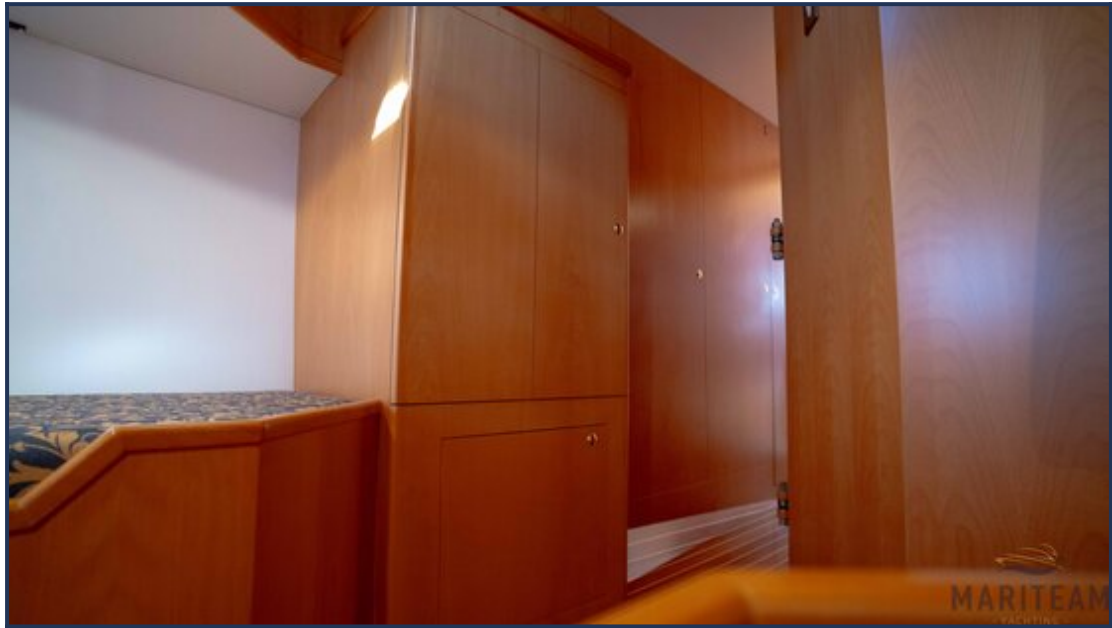






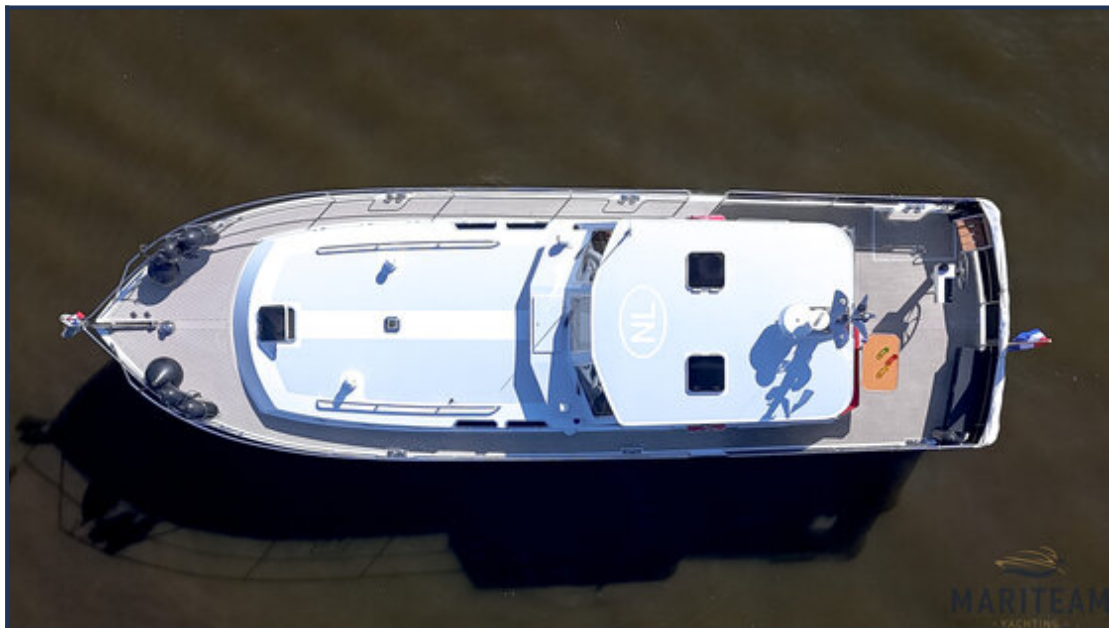












*These particulars are given in good faith as supplied but cannot be guaranteed and cannot be used for contracts.*