



## Grand Banks 46 Europa 'NIMROD'

LOA (m):	14.35 m
Beam (m):	4.50 m
Draft (m):	1.35 m
Engines:	2x 210hp Caterpillar
Cabins:	3
Homeport:	Sales office, Heeg
Price:	€ (not set)

The Grand Banks 46 Europa 'NIMROD' is a very well-equipped and well-maintained yacht.

What makes 'NIMROD' stand out is her excellent condition, including the varnish work, the improved helm seat, and the mast which was completely sandblasted and powder-coated in 2022.

Additionally, 'NIMROD' features:

- 3-cabin layout
- Marine Air air conditioning
- Naiad Dynamics stabilizers
- Boat Leveler trim system
- Kabola central heating

- Electric gangway at the stern

## Main specifications

Model:	46 Europa
LOA (m):	14.35 m
Beam (m):	4.50 m
Draft (m):	1.35 m
Year:	1994
Hull Material:	GRP
Cabins:	3
Sleeping places:	5
Number of main engine(s):	2
Power of main engine(s) (hp):	210
Brand of main engine(s):	Caterpillar
Price:	€ (not set)
VAT status:	EU paid
HIN number:	GNDF0157B494
Year launched:	1994

## General

Name :	Nimrod
Shipyard:	American Marine Singapore Ltd.
CE-category:	Categorie B
Displacement (t):	18t
Hull material:	GRP
Deck material:	GRP
Superstructure material:	GRP
Deck finish:	Teak
Window material:	Single safety glass

Fuel tank (Litre and material):	2x 1200 Liter, steel
Freshwater Tank (Litre and material):	3x 380 Liter, Aluminium
Antifouling (Year):	2024 + anodes
Maximum speed (Kn):	13
Cruising speed (Kn):	8 kn

## Accommodation

Stove:	Gaggenau 2 burner inductie + 2 burner gas
Refrigerator:	2x Coolmatic
Freezer:	1x Frigoboat compartiment
Interior finish:	Teak
TV:	1x Akai
Router:	present
Radio:	Pioneer DAB+
Single berths:	1x
Double bed:	2x
Cabins:	3 cabins
Toilets:	2x vacuflush
Showers:	1x Dorn Bracht + 1x Original
Combi oven/microwave:	Zanussi ZKC4 3kw - 220v

## Machinery

Port engine (Brand, type, hp, gearbox):	Caterpillar 3208 NA, 210pk, Twin Disc
Engine hours port engine:	+ - 5100
Star engine (Brand, type, hp, gearbox):	Caterpillar 3208 NA, 210pk, Twin Disc



Engine hours starboard engine:	+ - 5100
Main engines control (Brand and type):	Mathers MicroCommander Elektrische controll
Drive (Shaft, IPS, Jet):	Drive shaft
Shaft lubrication:	Water lubricated
Prop (Number of blades, material):	3-blade
Generator (Brand, type, Kw):	Onan Marine
Generator hours:	1439 uur
Bowthruster (Brand, type, elec/hyd):	Sidepower (2x eigen accu 2025)
Electrical bilge pump:	2x Rule Industries 2000 GPH
Manual bilge pump:	present
Water pressure pump (Brand, model):	Parmax plus
Hot water system:	Kabola + Isotemp 100L
Heating system (brand, model, type):	Kabola centrale heating
Trim system:	Boat Leveler Co.
Stabilizer system:	Naiad Dynamics Multisea II
Steering system:	Capitana Hydraulic Steering

## Electrical system

House battery (Number of battery,type, total Amp, year):	3x Exide Marine Gel batteries 12v - 210Ah (2022)
Start battery (Number of battery,type, total Amp, year):	2x AW batteries 12v - 225Ah (2024)
Generator battery (Number of battery,type, total Amp, year):	Wilco Royal 12v - 100 Ah (2021)
DC system (V) AC system (V):	12 V / 220 V
Inverter (V/W/Amp):	Mastervolt Mass Combi Ultra 12/3000-150
Battery charger (V/W/Amp):	Mastervolt Chargemaster 12/50-3 + Mastervolt Mass Combi Ultra 12/3000-150

## Safety system

Radar reflector:	Firdell Blipper 210-7
Life raft:	Zodiac certificat overdue

## Navigation system

Compass:	Danforth Constellation
Gps plotter:	Garmin GPS map 7012
Radar screen:	Garmin GPS map 7012
Radar :	Garmin HD
Depth meter:	Garmin GMI10
Log:	Garmin GMI10
Wind meter :	Garmin GMI10
VHF:	Raymarine Raymic
AIS:	Garmin
Autopilot:	Garmin + controll
Rudder indicator:	VDO

## Equipment

Windlass:	12mm rvs chain
Gangway:	Integrated into the transom
Tender crane:	Opacmare (2022 revised)
Deck shower:	1x hot & cold
Window ventilation:	Sliding and tilting windows

























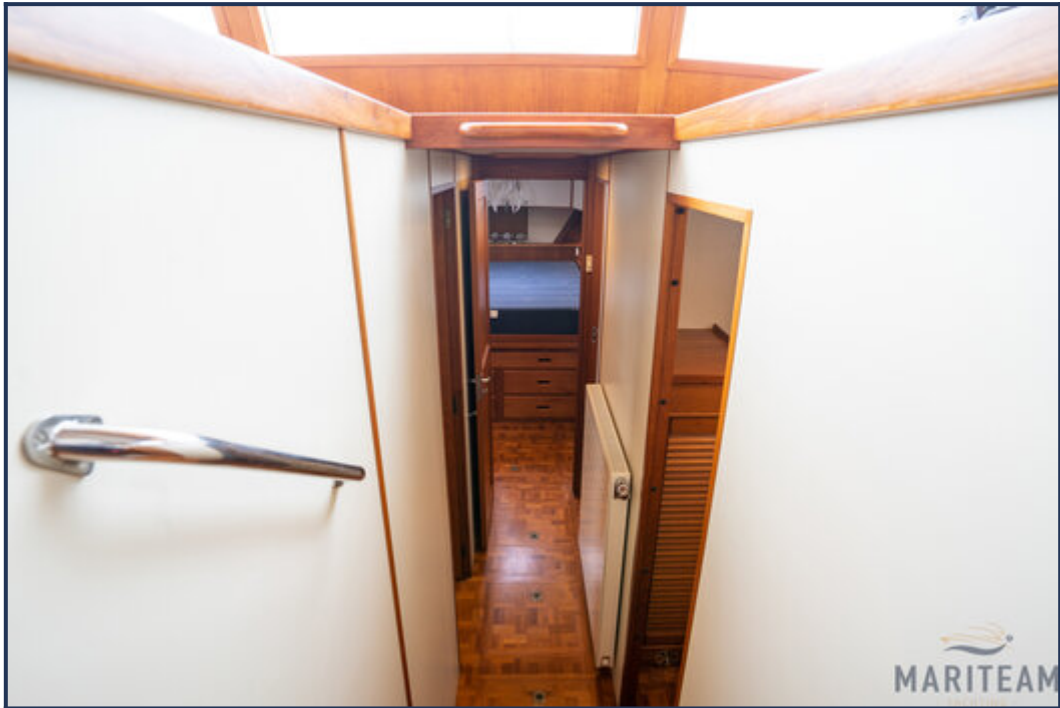






















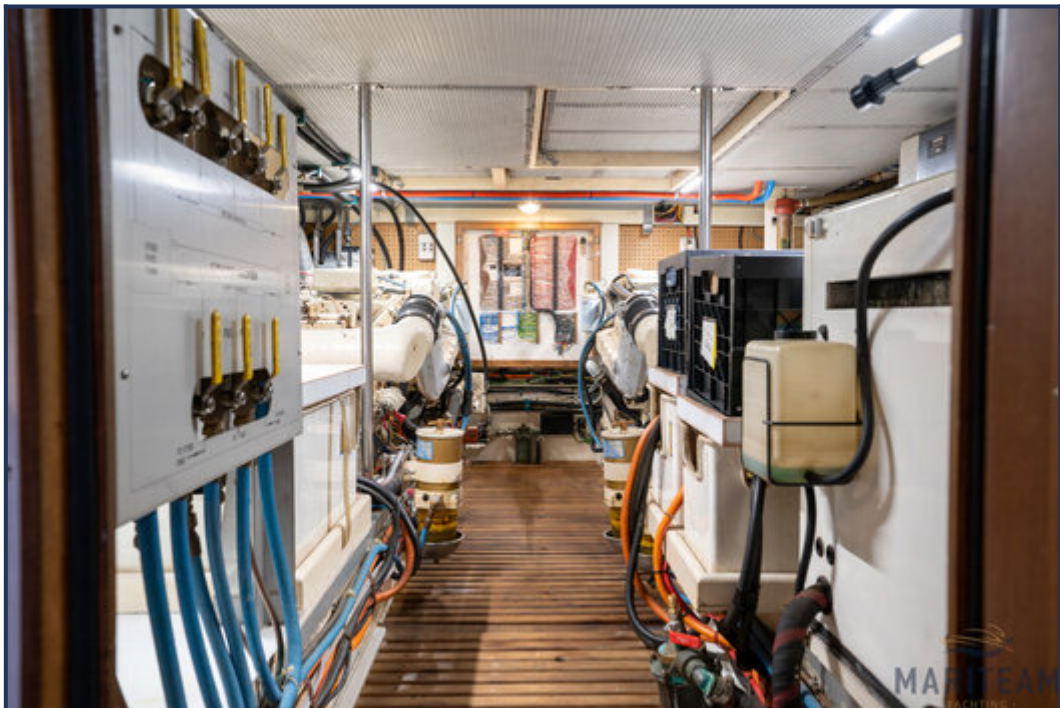


















*These particulars are given in good faith as supplied but cannot be guaranteed and cannot be used for contracts.*