



# MARITEAM

- YACHTING -



## Grand Bank 58 Classic 'JUST FOR FUN'

LOA (m):	17.86 m
Beam (m):	5.33 m
Draft (m):	1.68 m
Engines:	2x 680hp MAN
Cabins:	4
Homeport:	Antibes, France
Price:	€ (not set)

The Grand Banks 58 Classic, "JUST FOR FUN", is a stunning example of craftsmanship and timeless elegance. This yacht offers a perfect combination of comfort and functionality, with a spacious flybridge and saloon. Thanks to its generous layout, there is plenty of space to enjoy both cruising and staying on board.

### MARITEAM YACHTING

De Draei 29, 8621 CZ Heeg 📍 The Netherlands 📞 Phone +31 (0) 582 889254  
[info@mariteamyachting.nl](mailto:info@mariteamyachting.nl) 🌐 [www.mariteamyachting.nl](http://www.mariteamyachting.nl)

## Main specifications

Model:	58 Classic
LOA (m):	17.86 m
Beam (m):	5.33 m
Draft (m):	1.68 m
Year:	1991
Hull Material:	GRP
Cabins:	4
Sleeping places:	7
Number of main engine(s):	2
Power of main engine(s) (hp):	680
Brand of main engine(s):	MAN
Price:	€ (not set)
VAT status:	EU paid
HIN number:	GNDG0005J192

## General

Name :	JUST FOR FUN
Shipyard:	American marine (S) PTE. LTD.
Cruising speed (Kn):	10
Air draft (m):	5.49 top of windshield
Displacement (t):	40
Fuel tank (Litre and material):	2x 2350L, 1x 1447L, Aluminium
Freshwater Tank (Liter and material):	1601L Stainles steel
Black water tank (Litre and material):	757L
Hull material:	GRP
Superstructure material:	GRP

Deck material:	GRP
Deck finish:	Teak
Interior finish:	Teak
Window material:	Single Safety glas
Window ventilation:	Sliding and bottom-hung windows

## Accommodation

Cabins:	4 + Crew
Double bed:	3x
Single berths:	1x
Showers:	3x + 1x crew
Toilets:	3x Sealand 508, vacuflush + 1x crew, Sealand 508, vacuflush
Heating system (brand, model, type):	Marine Air
Airconditioning system (Brand, model):	Marine Air
Stove:	De Dietrich WB1630 F11
Combi oven/microwave:	Dimension 4
Refrigerator:	2x Grunert
Freezer:	1x Grunert
Ice cubes maker:	2x U-line
Dish washer:	Siemens
Washing machine/Dryer:	AEG
Dryer:	AEG
Vacuum cleaner system:	Nutone
Radio:	Pioneer + Fusion
Light:	Furuno

## Machinery

Main engines control (Brand and type):	Microcommandant, electric
Port engine (Brand, type, hp, gearbox):	MAN D2848 LXE 680 HP
Engine hours port engine:	Circa 1050 march 2025
Star engine (Brand, type, hp, gearbox):	MAN D2848 LXE 680Hp
Engine hours starboard engine:	Circa 1010 march 2025
Steering system:	Hynautic, hydraulic
Drive (Shaft, IPS, Jet):	Drive shaft
Shaft lubrication:	Water lubricated
Prop (Number of blades, material):	2x Stone Marine, 4 blade
Generator (Brand, type, Kw):	1x ONAN 16MDL4P, 1x ONAN 6.5 MDKDP
Generator hours:	6Kw: circa 1012, 16Kw: circa 1077 march 2025
Stabilizer system:	NAIAD 254, Fin Stabilisatoren
Synchronizer:	Glendinning
Bowthruster (Brand, type, elec/hyd):	HPS, Hydraulic
Sternthruster (Brand, type, elec/hyd):	Vetus, elektrisch
Watermaker:	HRO systems
Water pressure pump (Brand, model):	Paragon Senior PSR
Hot water system:	Cewal
Macerator pump:	Sealand S12
Trim system:	Boat Leveller Instra Trim

## Electrical system

DC system (V) AC system (V):	12 V / 230 V
Battery charger (V/W/Amp):	House: Sturling Power, 12V - 50A Pro Charger Ultra, 2 x Mastervolt Mass 24/50
House battery (Number of battery,type, total Amp, year):	4x

Start battery (Number of battery,type, total Amp, year):	4x Dolphin 180Ah, 2021
Generator battery (Number of battery,type, total Amp, year):	2x Optima Redtop 50Ah

## Safety system

Life raft:	Yes
Electrical bilge pump:	4x Rule Industries
Manual bilge pump:	4x EDSON 117 & PAR 33965-0000
Fire extinguisher engine room:	Seafire
Search light:	Rayline
Horn:	Marco

## Navigation system

Compass:	Danforth
Gps plotter:	Simrad NSE12
Radar :	Simrad NS12
Autopilot:	Robertson AP300x
Rudder indicator:	VDO
Depth meter:	Furuno
VHF:	1x Simrad RS35, 1x Sailor compact VHF RT20248

## Equipment

Tender:	1x Conrad Pischel 4.3 (2015) with 60Hp Yamaha, 1x Boston Whaler with 25Hp Yamaha
---------	---

Tender crane:	MarQuipt
Gangway:	Opacmare
Anchor:	2x
Windlass:	Lofrans Titan
Deckwash:	1x
Deck shower:	1x hot & cold



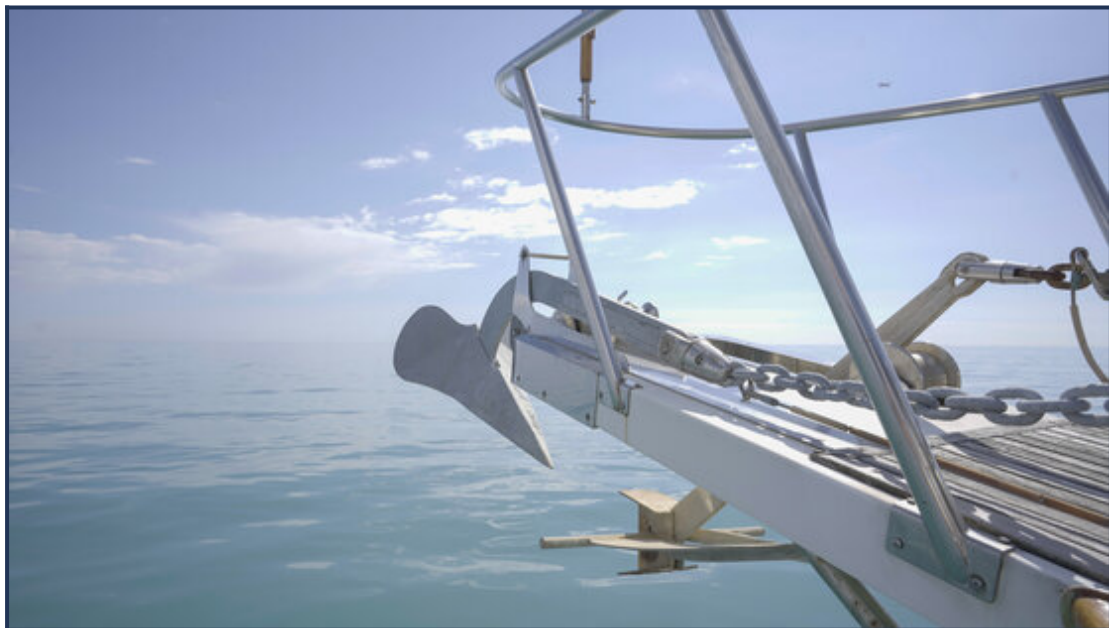
























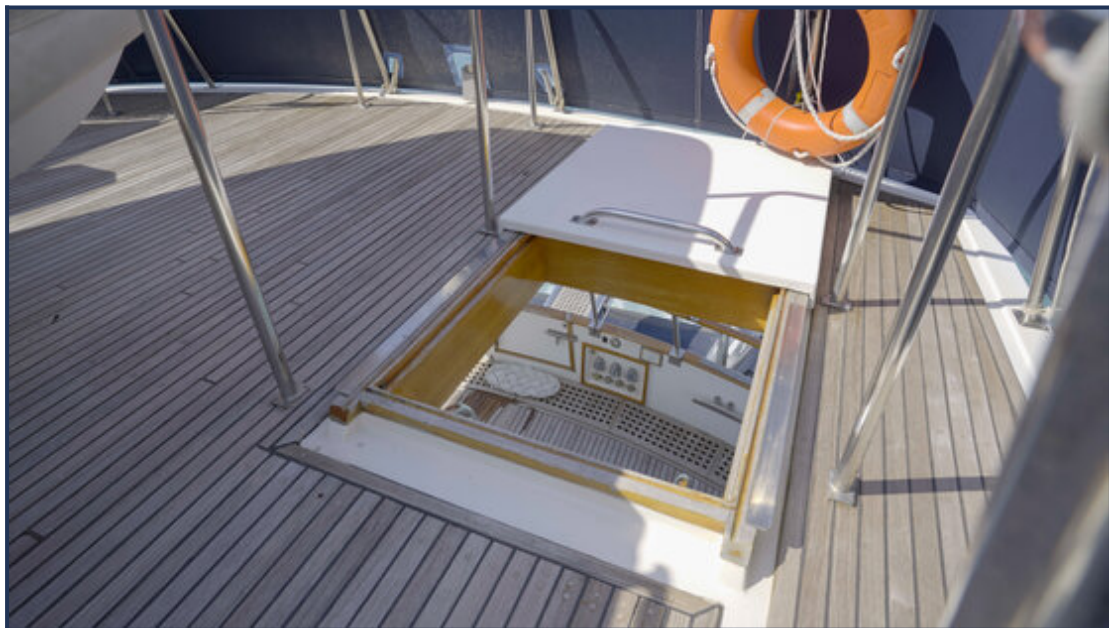
































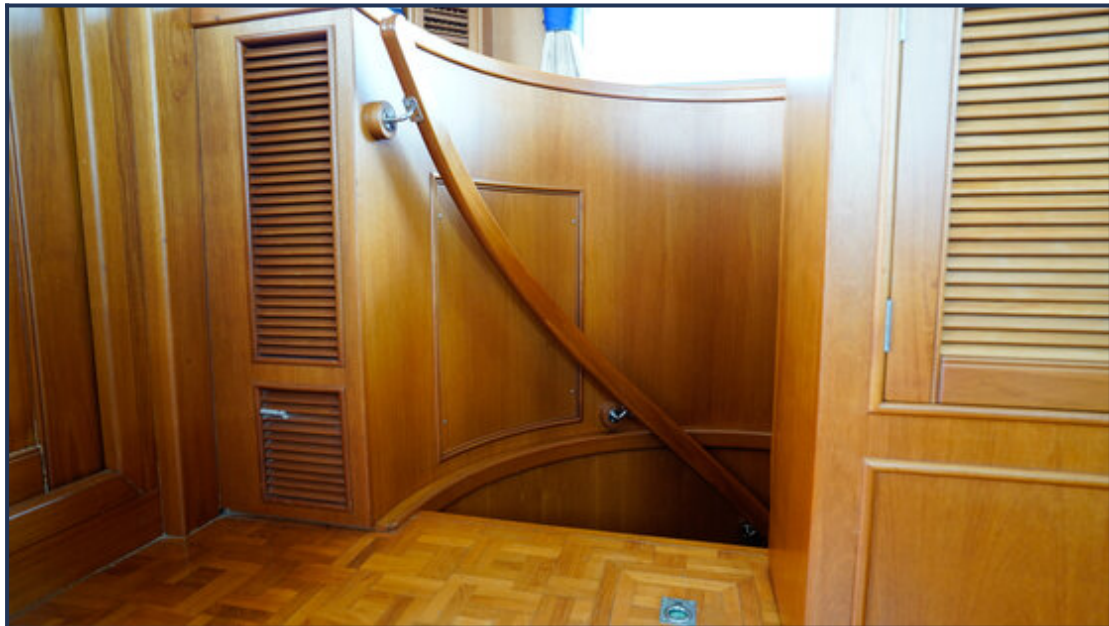


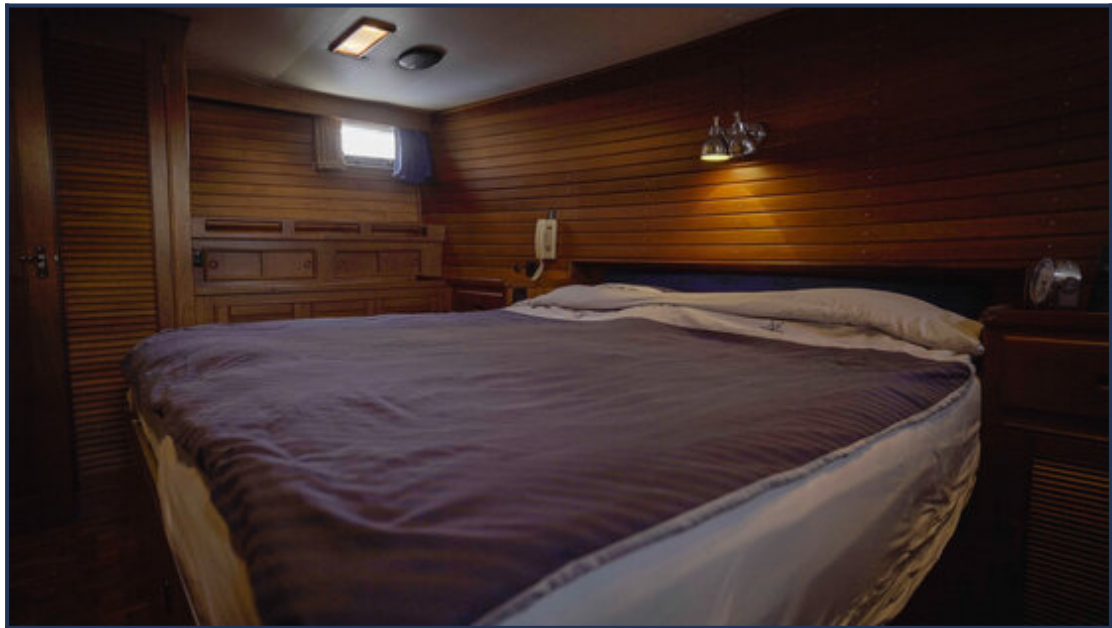












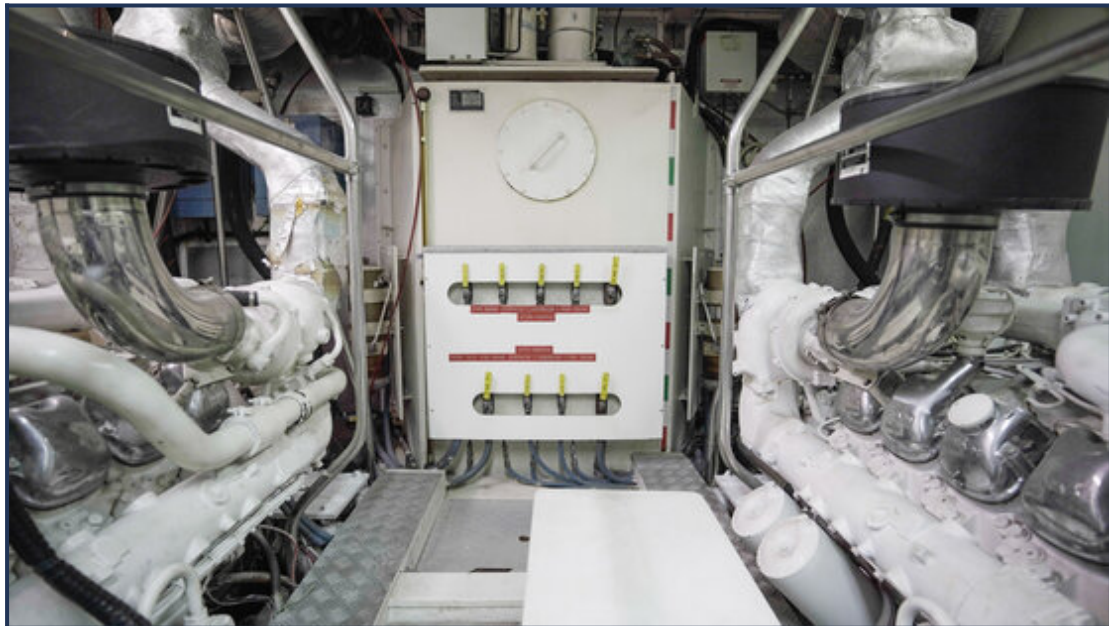


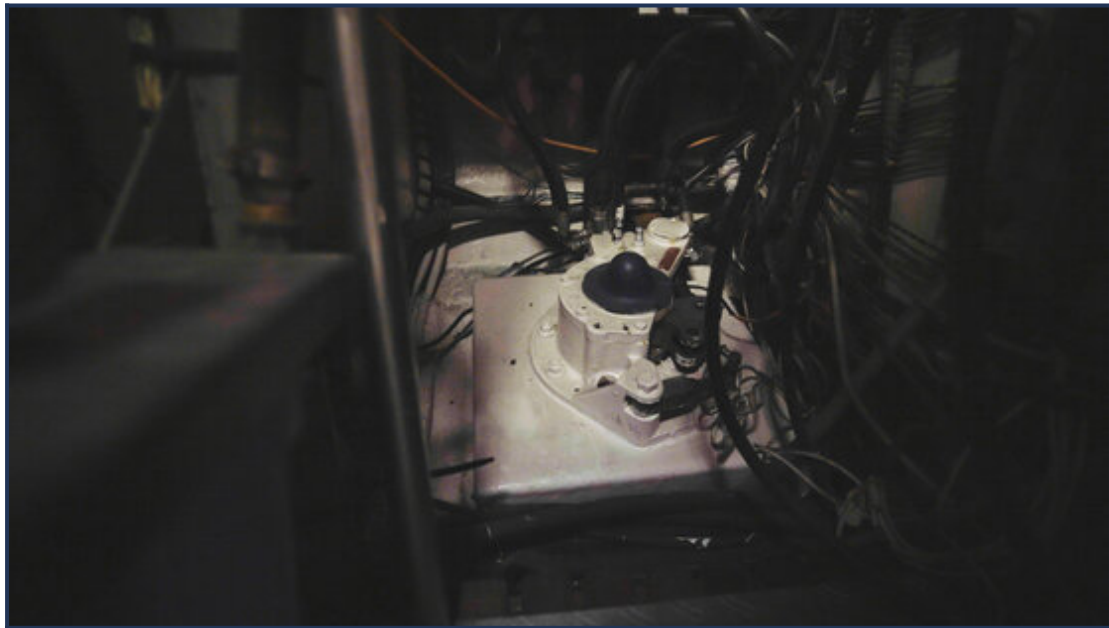












*These particulars are given in good faith as supplied but cannot be guaranteed and cannot be used for contracts.*