



MARITEAM

- YACHTING -



Grand Banks 36 Sedan Riviera 'POLLUX'

LOA (m):	11.07 m
Beam (m):	3.71 m
Draft (m):	1.19 m
Engines:	1x 135hp Ford Lehman
Cabins:	1
Homeport:	Sales office, Heeg
Price:	€ (not set)

Grand Banks 36 Sedan Riviera 'POLLUX'

MARITEAM YACHTING

Ceresweg 20-B, 8938 BG Leeuwarden 📍 The Netherlands 📞 Phone +31 (0) 582 889254

info@mariteamyachting.nl 📧 www.mariteamyachting.nl

Main specifications

Model:	36 Sedan Riviera
LOA (m):	11.07 m
Beam (m):	3.71 m
Draft (m):	1.19 m
Year:	1987
Hull Material:	GRP
Cabins:	1
Sleeping places:	2
Number of main engine(s):	1
Power of main engine(s) (hp):	135
Brand of main engine(s):	Ford Lehman
Price:	€ (not set)
VAT status:	EU paid
HIN number:	GNDC0783D787

General

Name :	POLLUX
Shipyard:	Riviera Australia Pty. LTD.
Air draft (m):	3.73 top of windshield
Displacement (t):	10.5T
Hull material:	GRP
Deck material:	GRP
Superstructure material:	GRP
Deck finish:	Teak
Window material:	Single safety glass
Fuel tank (Litre and material):	2x 758L, mild steel

Freshwater Tank (Liter and material):	2x 393L, mild steel
Black water tank (Litre and material):	1x 63L, GRP
Antifouling (Year):	2023
Cruising speed (Kn):	7

Accommodation

Stove:	Ceran Scott 3 burner
Refrigerator:	2x Isotherm (2008)
Freezer:	1x in fridge
Interior finish:	Teak
TV:	Samsung
Radio:	Pioneer
Double bed:	2 + 2 (dinette)
Cabins:	1x
Toilets:	1x Tecma elektrik
Showers:	1x
Combi oven/microwave:	Siemens

Machinery

Motor:	135pk, Ford Lehman
Motor hours:	3875
Main engines control (Brand and type):	Morse
Drive (Shaft, IPS, Jet):	Drive shaft
Prop (Number of blades, material):	4 blade
Generator (Brand, type, Kw):	Onan, 3,5Kw

Generator hours:	981
Bowthruster (Brand, type, elec/hyd):	Vetus 5,5Pk
Sternthruster (Brand, type, elec/hyd):	Vetus 5,5Pk
Electrical bilge pump:	Rule Industries
Manual bilge pump:	PAR
Hot water system:	Boiler Isotemp 40L (2006)
Heating system (brand, model, type):	Webasto hot air (2002)
Deckwash:	1x

Electrical system

House battery (Number of battery,type, total Amp, year):	4x AGM 12V 220Ah
Bowthruster battery (Number of battery,type, total Amp, year):	2x Optima 12V 50Ah (2025)
Sternthruster battery (Number of battery,type, total Amp, year):	2x Optima 12V 50Ah
Generator battery (Number of battery,type, total Amp, year):	1x AGM 12V 110Ah
DC system (V) AC system (V):	12V / 220V
Inverter (V/W/Amp):	Victron Energy Quattro 12V/3000VA/120AMP
Battery charger (V/W/Amp):	Victron Energy Quattro 12V/3000VA/120AMP

Safety system

Fire extinguisher engine room:	Reservoir
--------------------------------	-----------

Navigation system

Compass:	Plastimo (2006)
Gps plotter:	Navman 8210 (2010)
Radar screen:	Navman (2010)
Radar :	Navman (2010)
Depth meter:	Via Navman 8120
Log:	Via Navman 8120
VHF:	Shipmate RS8300
Autopilot:	Robertson AP22
Rudder indicator:	VDO

Equipment

Anchor:	1x
Windlass:	Nelson Maxwell
Deck shower:	1x hot & cold
Window ventilation:	Sliding and tilting windows











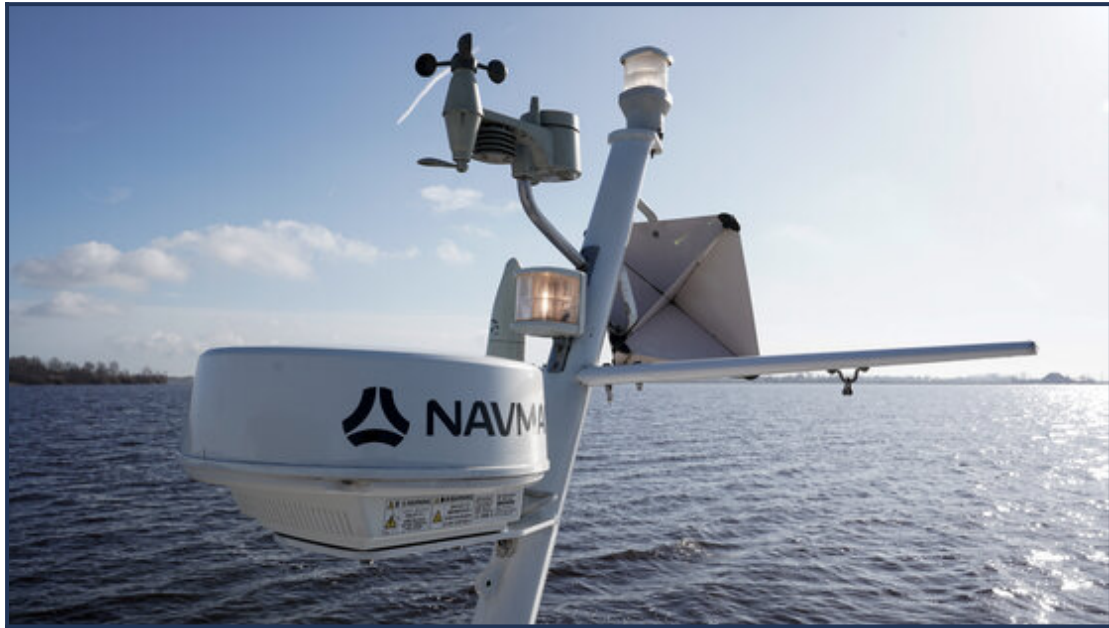














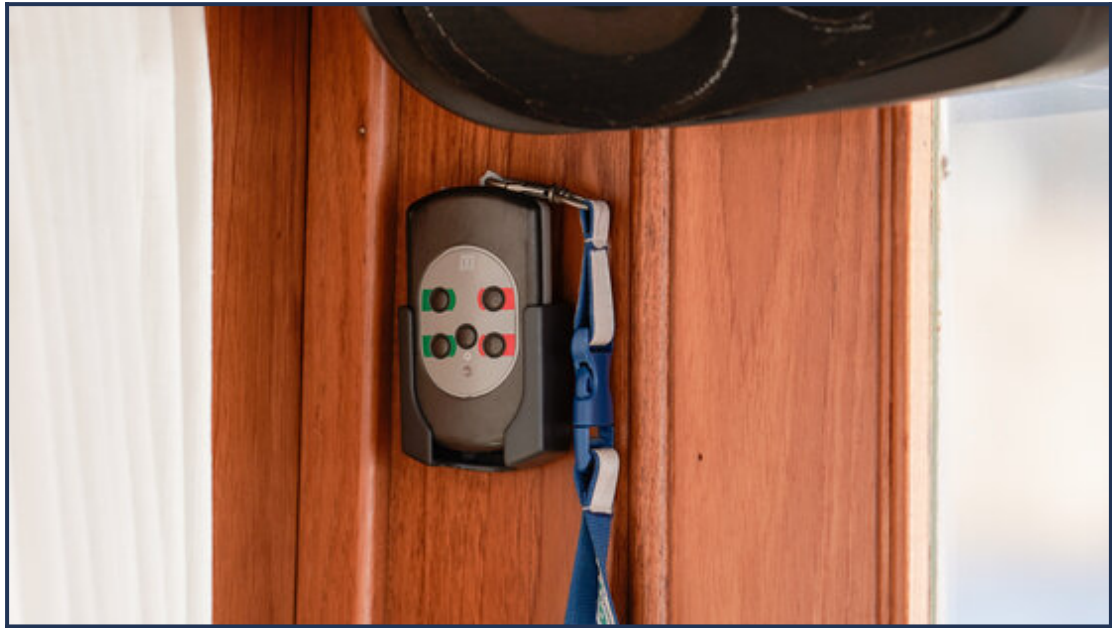








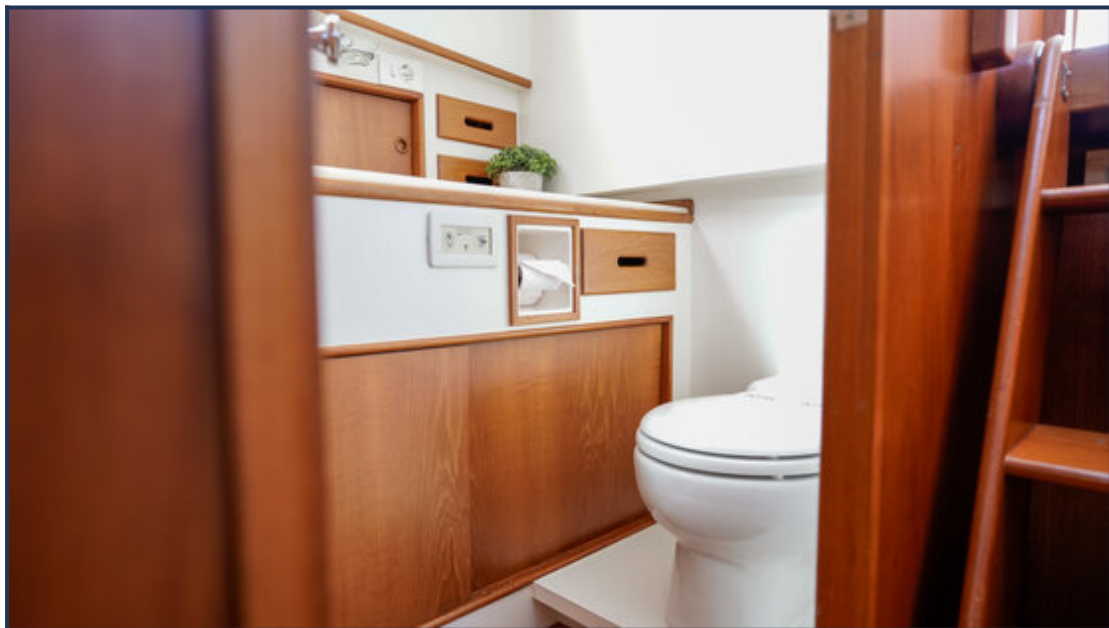
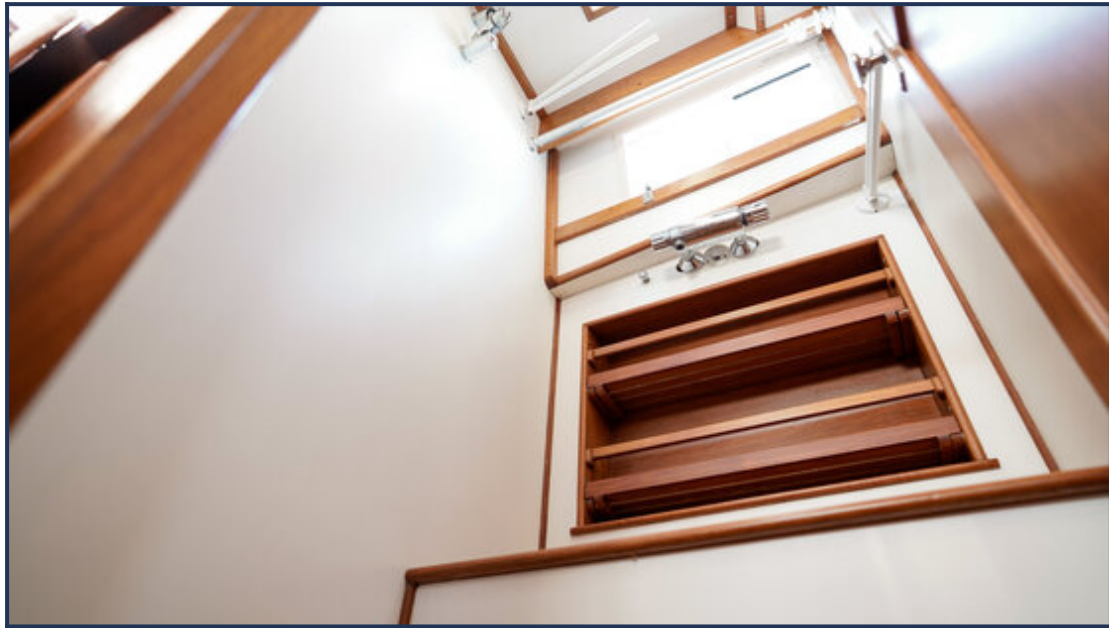




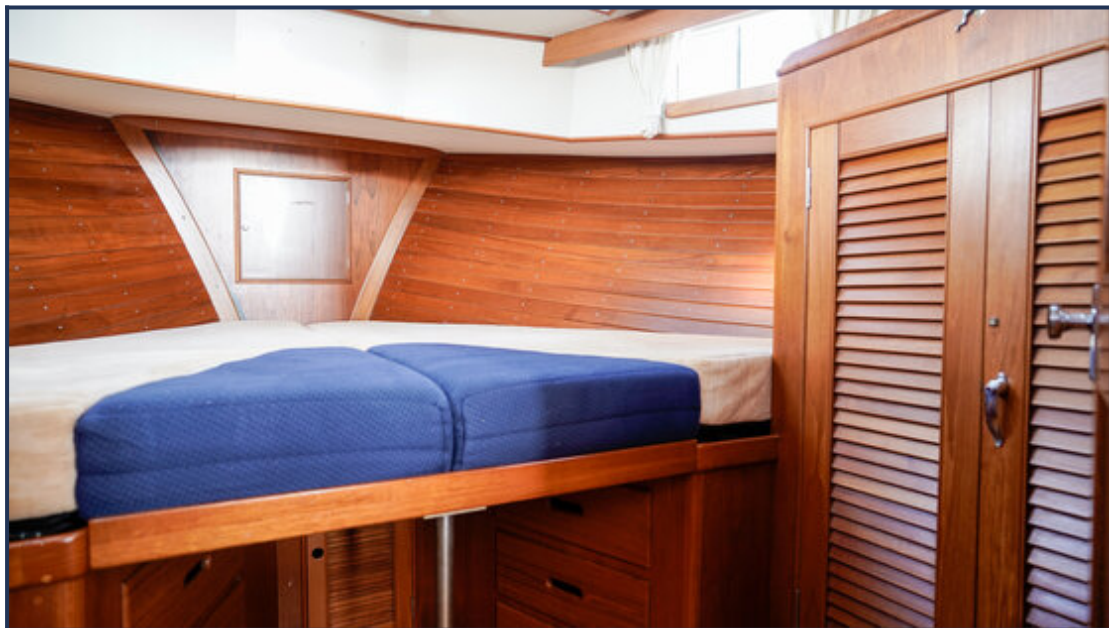


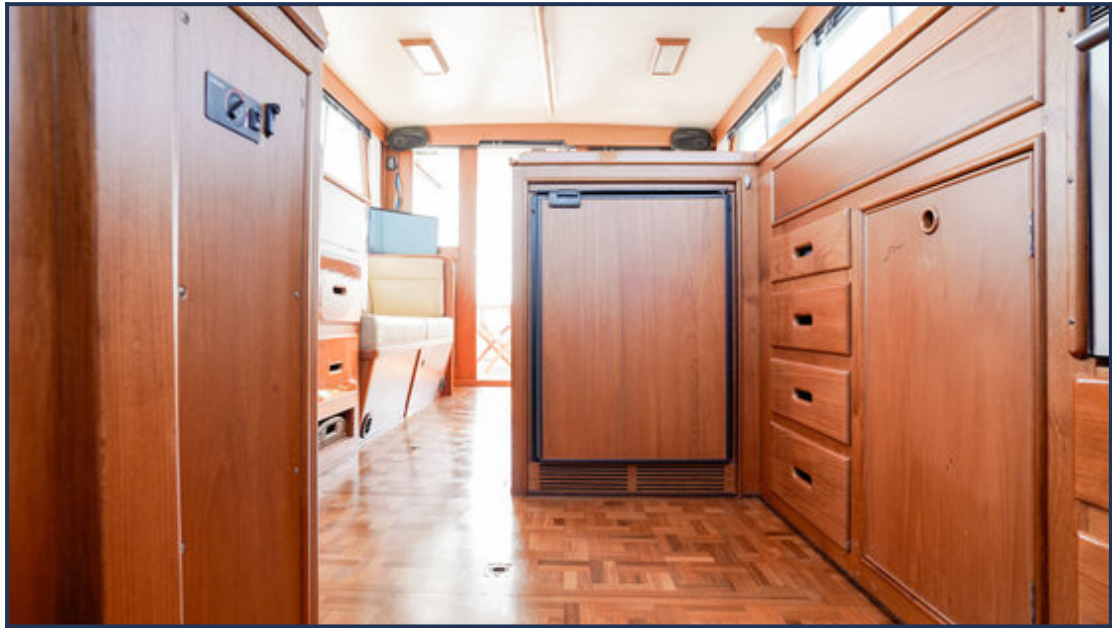






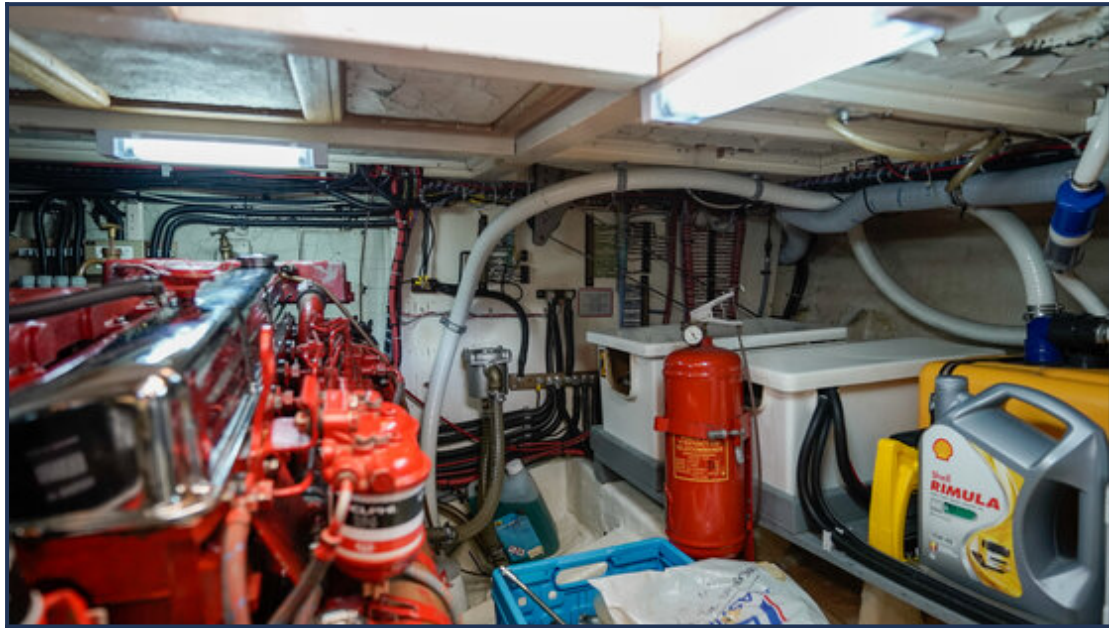














These particulars are given in good faith as supplied but cannot be guaranteed and cannot be used for contracts.