



## Grand Banks 47 Heritage EU 'SPRINGTIME'

LOA (m):	14.22 m
Beam (m):	4.80 m
Draft (m):	1.17 m
Engines:	2x 503hp Caterpillar
Cabins:	2
Homeport:	Sales office, Heeg
Price:	€ 535,000

The Grand Banks 47 Heritage EU 'Springtime' is a very complete and well maintained specimen. Special features of the 'Springtime' include:

- Full maintenance history available
- Dometic Marine air conditioning
- Sidepower bow and stern thrusters
- 360-degree camera visibility
- Raymarine navigation system



# MARITEAM

- YACHTING -

## MARITEAM YACHTING

De Draei 29, 8621 CZ Heeg 📍 The Netherlands 📞 Phone +31 (0) 582 889254  
[info@mariteamyachting.nl](mailto:info@mariteamyachting.nl) 📧 [www.mariteamyachting.nl](http://www.mariteamyachting.nl)

## Main specifications

Model:	47 Heritage EU
LOA (m):	14.22 m
Beam (m):	4.80 m
Draft (m):	1.17 m
Year:	2005
Hull Material:	GRP
Cabins:	2
Sleeping places:	4
Number of main engine(s):	2
Power of main engine(s) (hp):	503
Brand of main engine(s):	Caterpillar
Price:	€ 535,000
VAT status:	EU VAT Paid
HIN number:	MY-GNDV0004K506
Year launched:	2006

## General

Name :	SPRINGTIME
Shipyard:	Grand Banks Yachts Malaysia
Air draft (m):	6.3
CE-category:	Category B
Displacement (t):	+ - 24t
Hull material:	GRP
Deck material:	GRP
Superstructure material:	GRP
Deck finish:	Teak

Window material:	Tinted safety glass
Fuel tank (Litre and material):	2271L, GRP
Freshwater Tank (Liter and material):	984L, Stainless steel
Black water tank (Litre and material):	291L, GRP
Antifouling (Year):	2024
Maximum speed (Kn):	+ - 20kn
Cruising speed (Kn):	7 á 8 knots

## Accommodation

Stove:	Siemens induction 4-burner
Microwave:	Samsung
Refrigerator:	Tundra, T42RE
Freezer:	Tundra, TF20DC
Ice cubes maker:	U-line B-195BTP
Interior finish:	high gloss teak
Washing machine/Dryer:	Samsung Combi
TV:	present on lift
Single berths:	2x + 1 sleeping couch in salon
Double bed:	1x
Cabins:	2x
Toilets:	2x electric
Showers:	2x

## Machinery

Port engine (Brand, type, hp, gearbox):	Caterpillar C9, 503hp, Twin Disc
---	----------------------------------

Engine hours port engine:	2374 hours
Star engine (Brand, type, hp, gearbox):	Caterpillar C9, 503hp, Twin Disc
Engine hours starboard engine:	2351 hours
Main engines control (Brand and type):	Electronic, NHK
Drive (Shaft, IPS, Jet):	Shaft drive
Shaft lubrication:	Sure Seal, water lubricated
Prop (Number of blades, material):	4 blade
Generator (Brand, type, Kw):	Onan E-QD, 11.5 kw
Generator hours:	670 hours
Bowthruster (Brand, type, elec/hyd):	Side Power SP125TI
Sternthruster (Brand, type, elec/hyd):	Side Power SP125TI
Electrical bilge pump:	3x Rule Mate
Manual bilge pump:	present
Oil change system:	present
Water pressure pump (Brand, model):	Shurflo smart sensor
Hot water system:	Eldom 220v, 80L
Airconditioning system (Brand, model):	Dometic Marine Air System
Trim system:	Bennett trim tabs
Steering system:	Hydraulic

## Electrical system

House battery (Number of battery,type, total Amp, year):	2x CX230 AGM, 12v/230a (2022)
Start battery (Number of battery,type, total Amp, year):	2x B80 AGM, 12v/180a (2022)
Bowthruster battery (Number of battery,type, total Amp, year):	1x CX230 AGM 12v/230a (2022)
Sternthruster battery (Number of battery,type, total Amp, year):	1x CX220 AGM 12v/220a (2024)



DC system (V) AC system (V):	12V/220V
Inverter (V/W/Amp):	Victron Energy Quattro 12v/3000/120
Battery charger (V/W/Amp):	Mastervolt Charge Master 12/50-3

## Safety system

Fire extinguisher engine room:	Fireboy
High water alarm:	Present + mobile app
Life raft:	Plastimo Transocean, 2023
EPIRB:	ACR Satellite 406
Fire alarm:	Co2 alarms

## Navigation system

Compass:	Ritchie SS-5000 + flybridge
Gps plotter:	2x Raymarine Axiom Plus 12 + flybridge
Radar screen:	In GPS plotters
Radar :	Raymarine Quantum 2 Doppler Radar + flybridge
Depth meter:	Raymarine st60+ tridata + flybridge
Log:	Raymarine st60+ tridata + flybridge
Wind meter :	Raymarine st60+ tridata + flybridge
VHF:	Raymarine Ray 63 + Icom IC-M603 + flybridge
AIS:	AIS700 class B
Autopilot:	Raymarine EV200 Power+ P70RS Control + flybridge
Rudder indicator:	Quarz VDO + flybridge

## Equipment

Anchor:	Stainless steel
Windlass:	Tigres 12v/1200w
Tender crane:	Nautical Structures MC800
Tender:	Zodiac YL340L + Yamaha 25hp
Deck shower:	1x hot & cold
Search light:	ACR
Horn:	kahlenberg

























































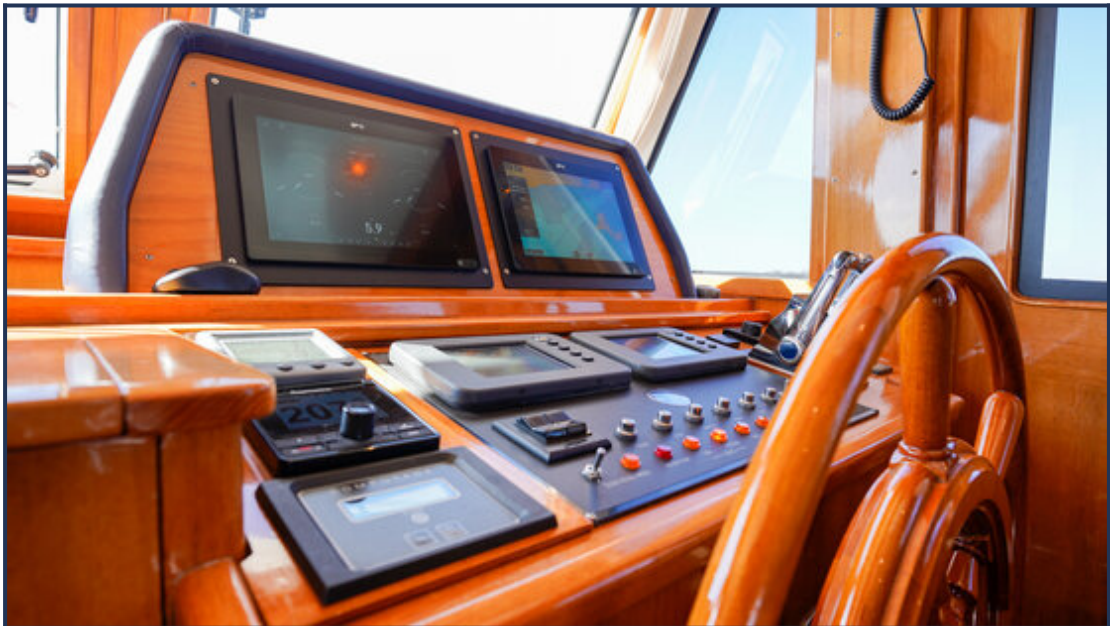
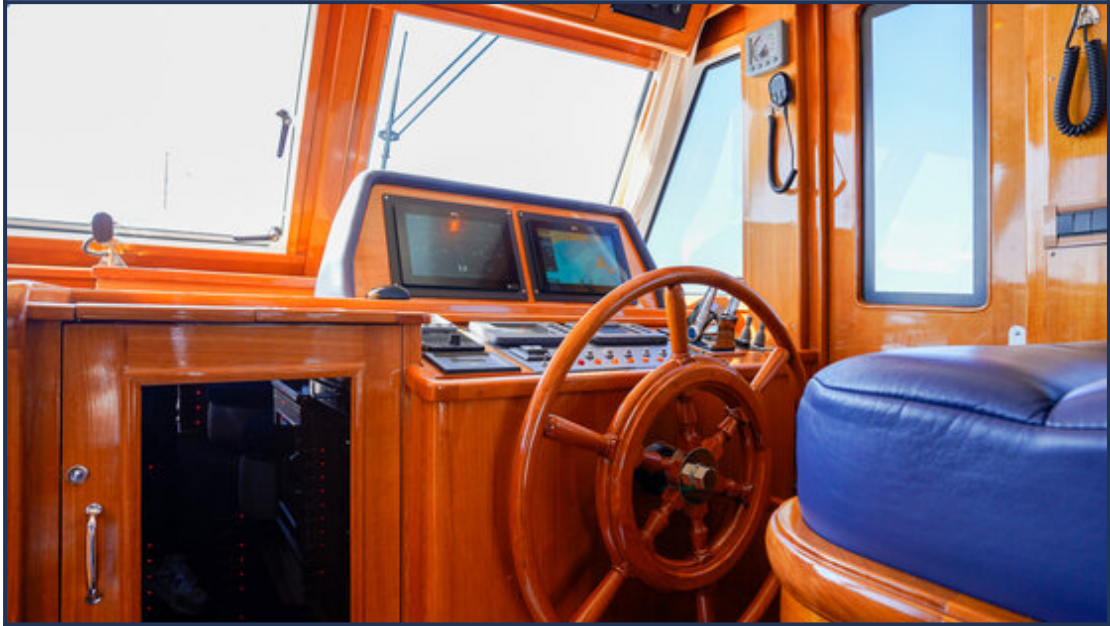








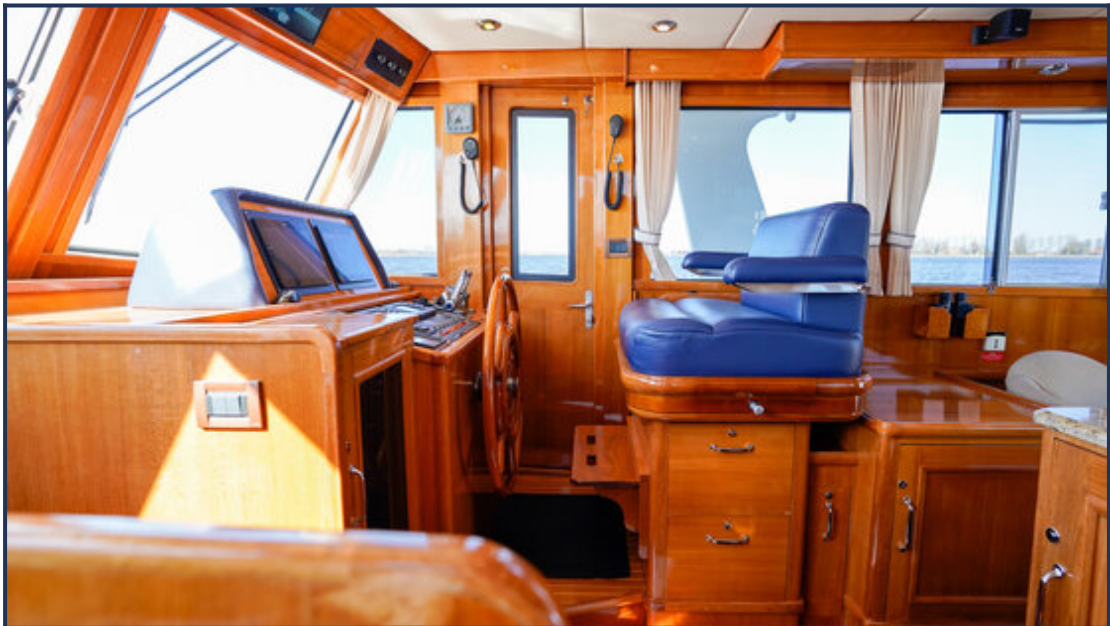




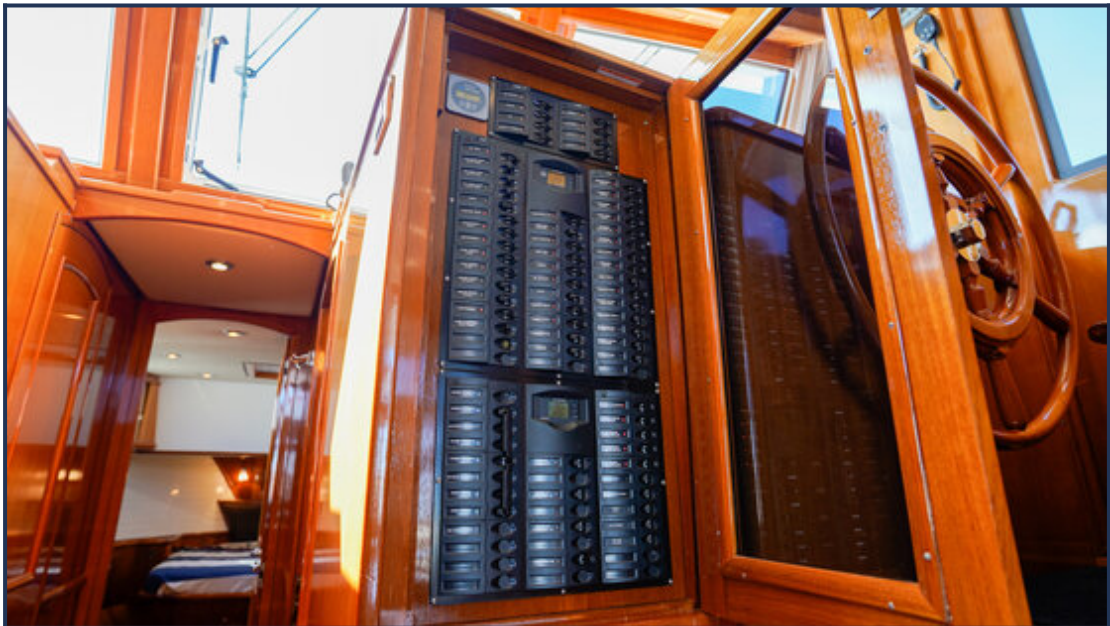








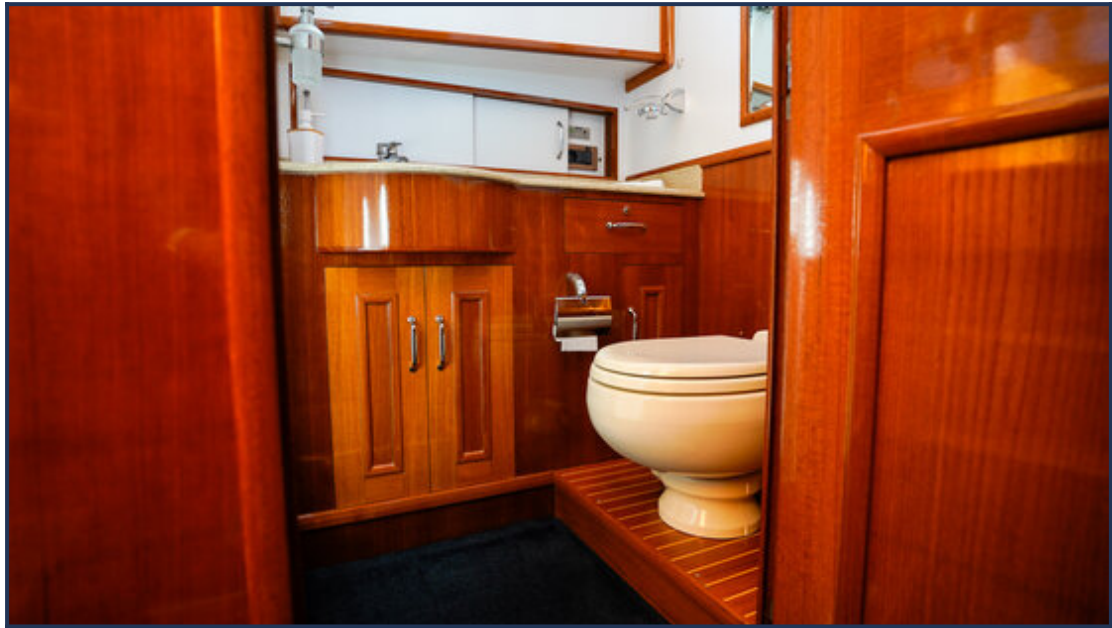












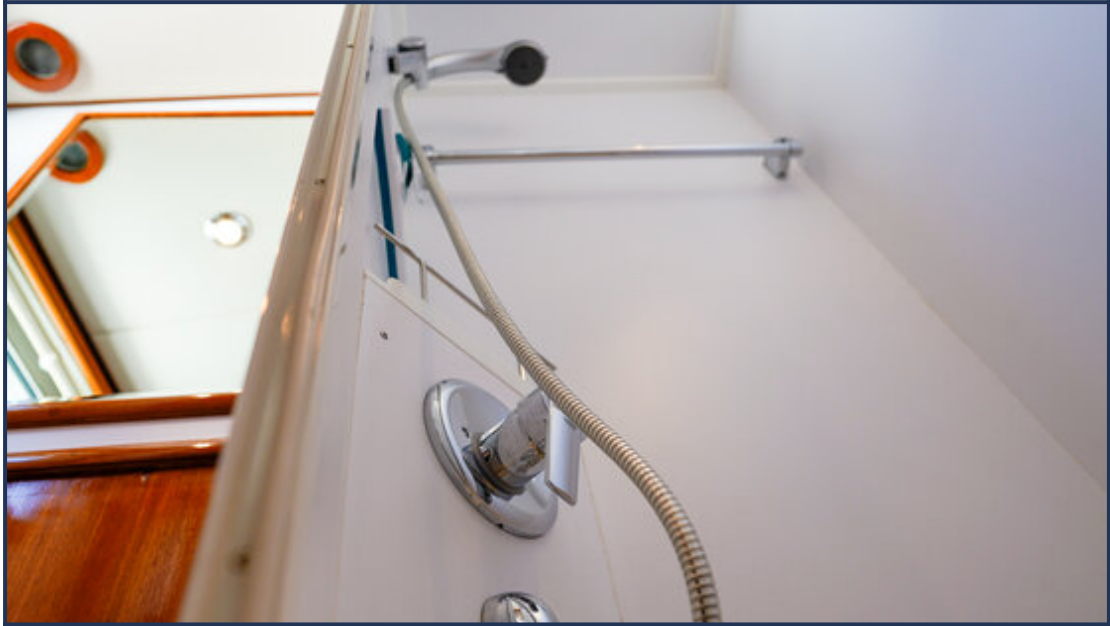
















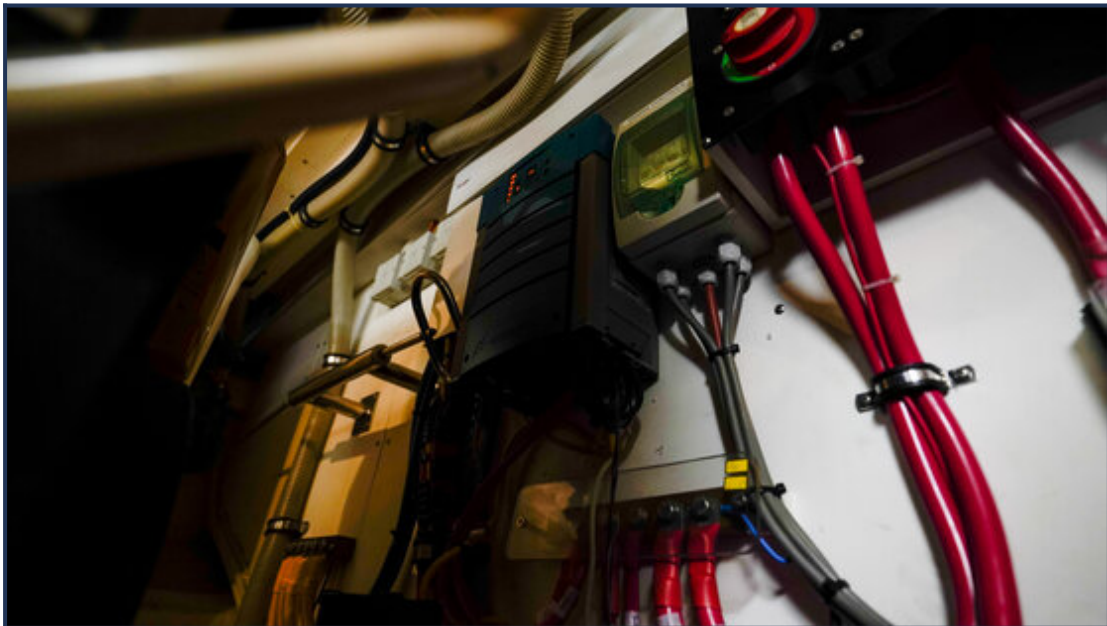
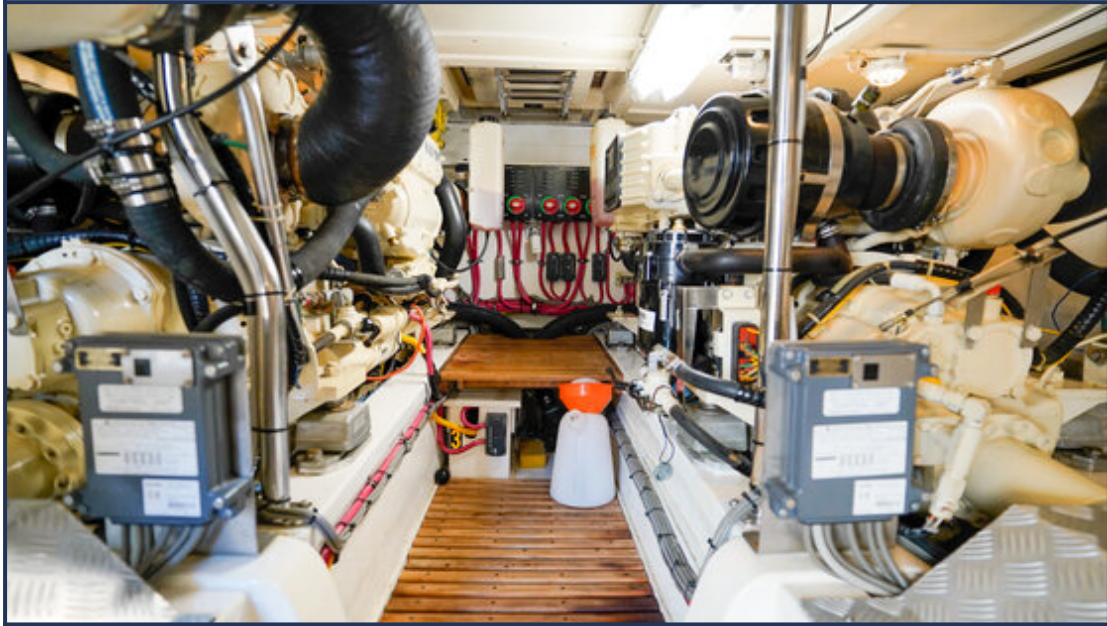






















*These particulars are given in good faith as supplied but cannot be guaranteed and cannot be used for contracts.*