



# MARITEAM

- YACHTING -



MARITEAM  
- YACHTING -

## Grand Banks Eastbay 38 HX 'Friday Harbor'

LOA (m):	11.57 m
Beam (m):	4.00 m
Draft (m):	1.02 m
Engines:	2x 375hp Caterpillar
Cabins:	1
Homeport:	Sales office, Heeg
Price:	€ 229,000

The Grand Banks Eastbay series, designed by C. Raymond Hunt, is renowned for its exceptional performance and comfort. The *Friday Harbor*, one of the few 38 HX models in Europe, is no exception and fully lives up to this reputation.

**MARITEAM YACHTING**

De Draei 29, 8621 CZ Heeg 📍 The Netherlands 📞 Phone +31 (0) 582 889254  
[info@mariteamyachting.nl](mailto:info@mariteamyachting.nl) 🌐 [www.mariteamyachting.nl](http://www.mariteamyachting.nl)

## Main specifications

Model:	38 HX
LOA (m):	11.57 m
Beam (m):	4.00 m
Draft (m):	1.02 m
Year:	2000
Hull Material:	GRP
Cabins:	1
Sleeping places:	4
Number of main engine(s):	2
Power of main engine(s) (hp):	375
Brand of main engine(s):	Caterpillar
Price:	€ 229,000
VAT status:	EU paid
HIN number:	GNDH0090C000
Year launched:	2000

## General

Name :	FRIDAY HARBOR
Shipyard:	Grand Banks Yachts Malaysia
CE-category:	C
Cruising speed (Kn):	24
Maximum speed (Kn):	28
Air draft (m):	3.3
Displacement (t):	12.3
Fuel tank (Litre and material):	1302L, RVS
Freshwater Tank (Liter and material):	2 x RVS

Black water tank (Litre and material):	1 x GRP
Hull material:	GRP
Superstructure material:	GRP
Deck material:	GRP
Deck finish:	Teak
Interior finish:	Teak
Window material:	Single safety glass
Window ventilation:	Sliding and tilting windows
Antifouling (Year):	2024

## Accommodation

Cabins:	1x
Double bed:	2 + 2 sofa bed
Showers:	1x
Toilets:	1x vacuflush
Heating system (brand, model, type):	Webasto central heating
Airconditioning system (Brand, model):	2 x Marine Air
Stove:	3 burner gas
Refrigerator:	1x Grunert
Freezer:	1x Grunert
Radio:	Surround throughout the whole boat
Light:	Led through the entire boat

## Machinery

Main engines control (Brand and type):	Kobelt
--	--------

Port engine (Brand, type, hp, gearbox):	Caterpillar 3208, 375pk, Twindisc
Star engine (Brand, type, hp, gearbox):	Caterpillar 3208, 375pk, Twindisc
Motor hours:	Unknown
Steering system:	Hydraulic
Drive (Shaft, IPS, Jet):	driveshaft
Shaft lubrication:	Water lubricated
Prop (Number of blades, material):	2 x 4 blade
Generator (Brand, type, Kw):	Westerbeke 60 BTDA, 6Kw
Generator hours:	881
Bowthruster (Brand, type, elec/hyd):	Side power + remote
Sternthruster (Brand, type, elec/hyd):	Side power + remote
Hot water system:	Boiler
Trim system:	Bennet
Oil change system:	X.change.R

## Electrical system

DC system (V) AC system (V):	12V / 220V
Battery charger (V/W/Amp):	Victron Quattro 12V/3000W/120Amp
Inverter (V/W/Amp):	Victron Quattro 12V/3000W/120Amp
House battery (Number of battery,type, total Amp, year):	Optima Yellow top 55Ah (2024)
Start battery (Number of battery,type, total Amp, year):	Optima Yellow top 55Ah (2024)
Generator battery (Number of battery,type, total Amp, year):	Optima Yellow top 55Ah (2024)

## Safety system

Life raft:	Duarry 4-person life raft certified till 02/2026
Electrical bilge pump:	Rule superswitch
Gas detector:	Fireboy
Search light:	ACR
Horn:	Hollux

## Navigation system

Compass:	Ritchie
Gps plotter:	Garmin GPSMap 1223 (2023)
Radar screen:	Furuno
Radar :	Furuno
Autopilot:	Garmin + remote (2023)
Rudder indicator:	VDO
Log:	Via Garmin plotter
Depth meter:	Via Garmin plotter
VHF:	Raymarine Ray53
Remote Control:	Bow and sternthruster

## Equipment

Gangway:	EYS
Anchor:	Sancor 15kg
Windlass:	Maxwell
Deckwash:	1x
Deck shower:	1x hot and cold















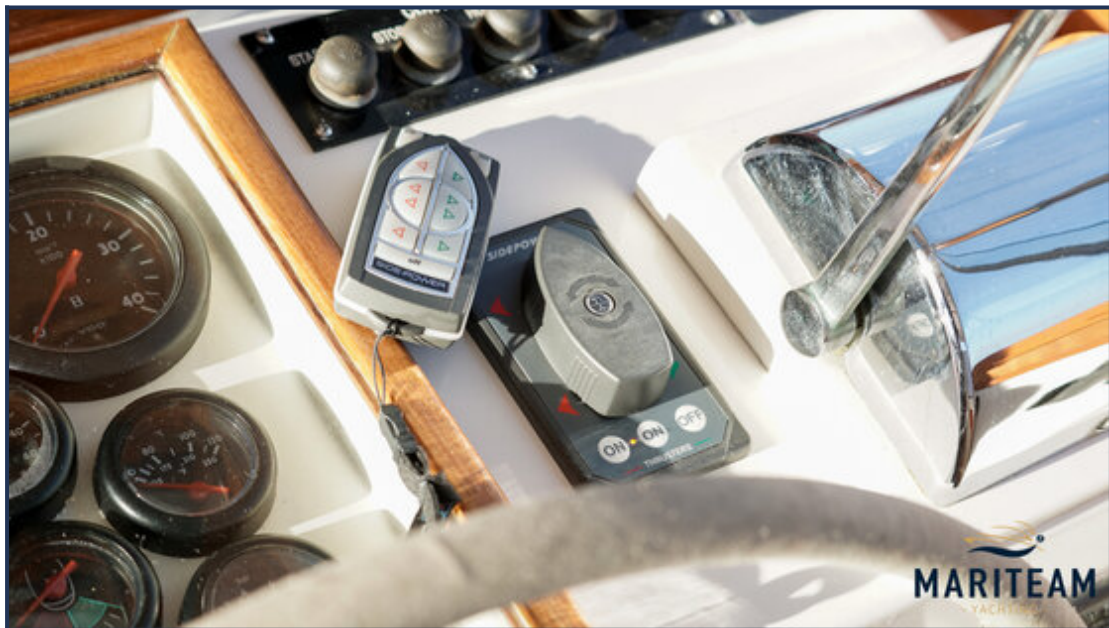










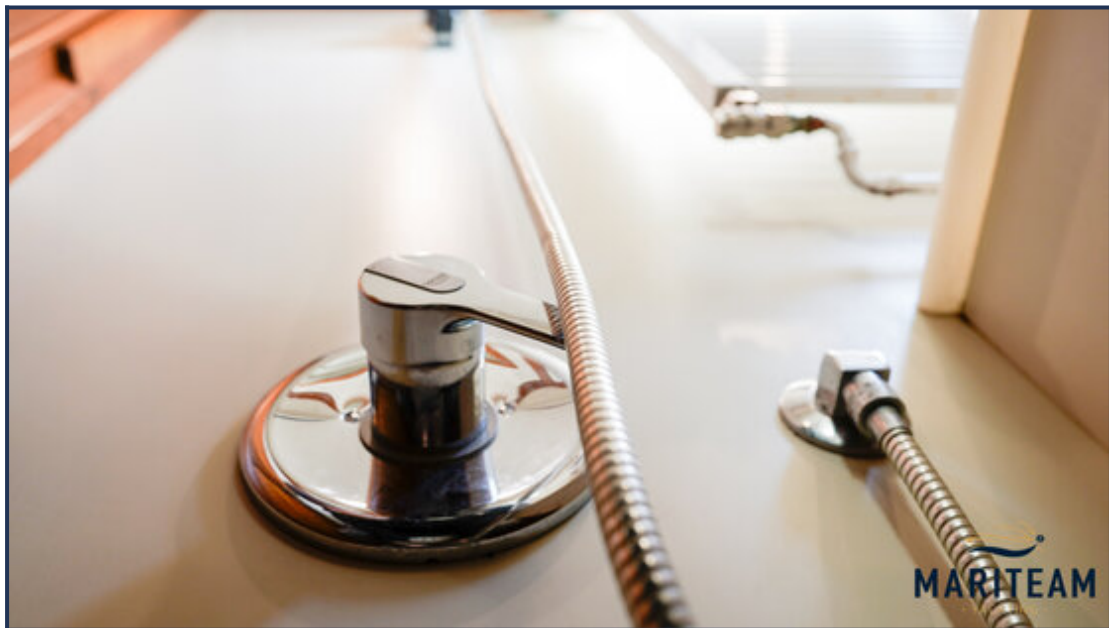


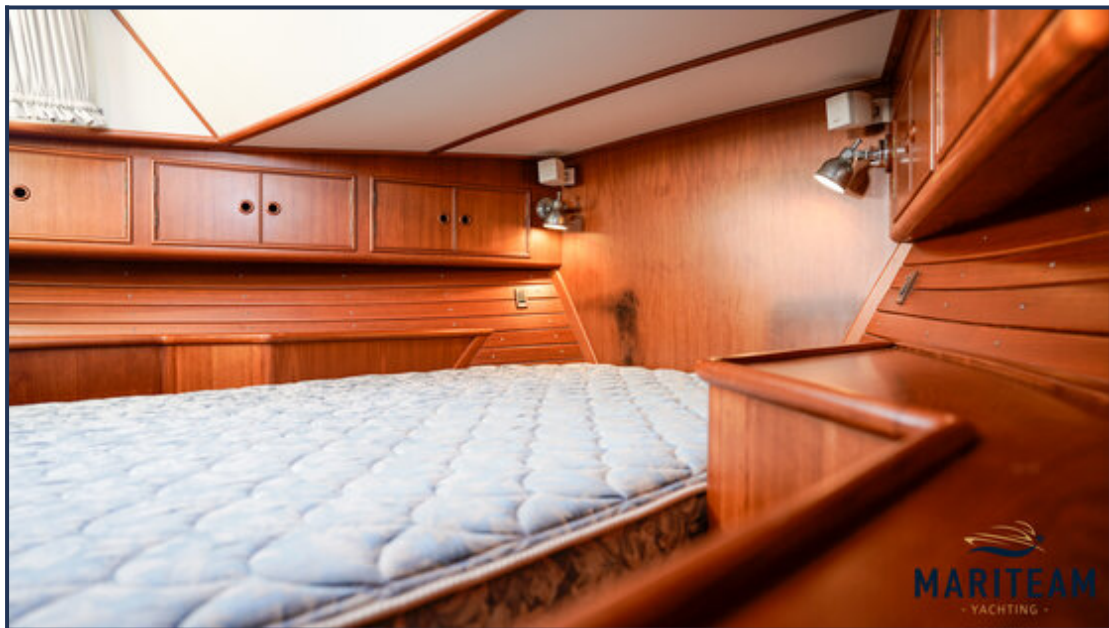




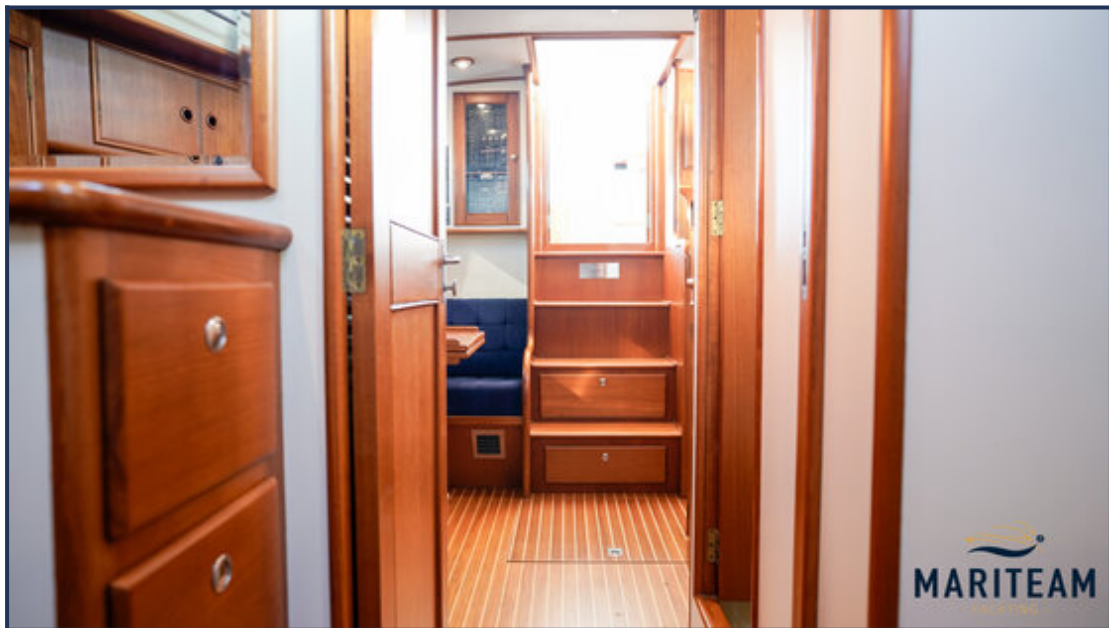








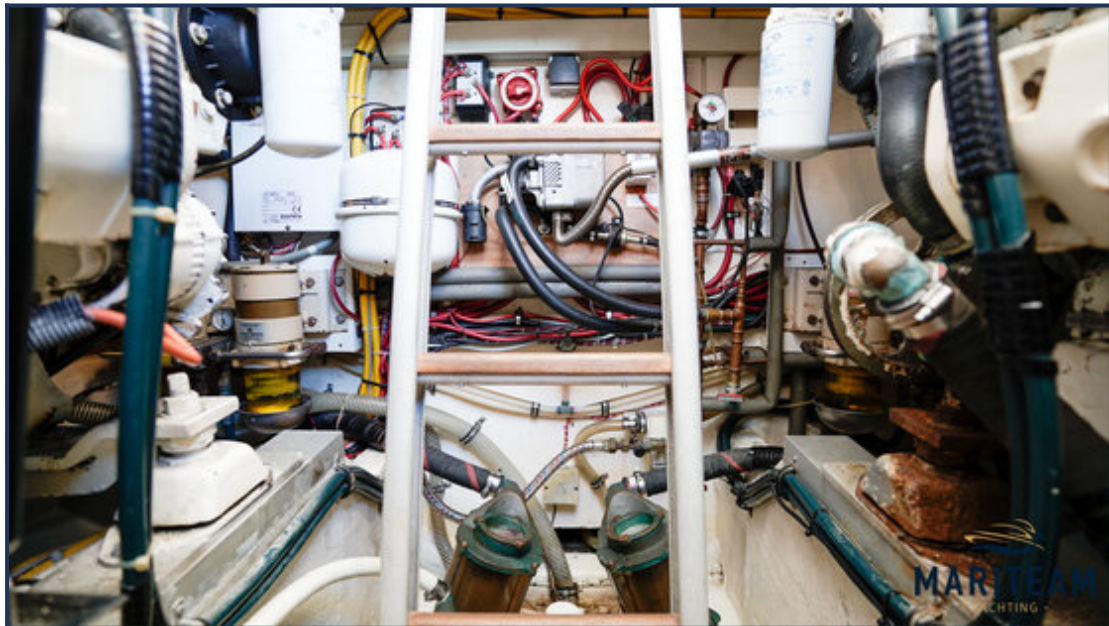






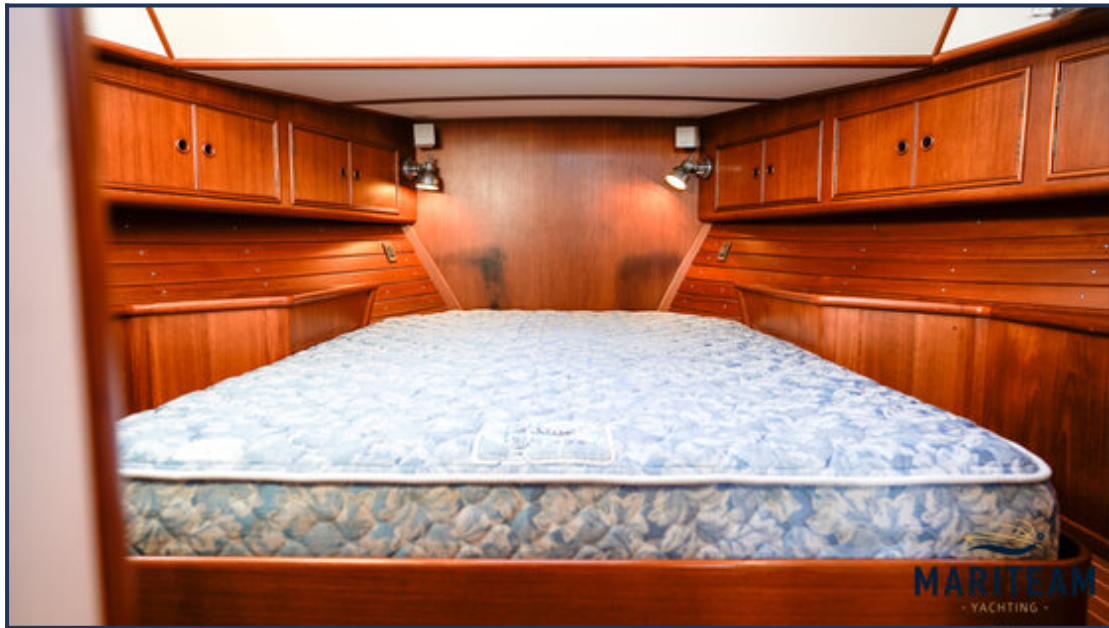














*These particulars are given in good faith as supplied but cannot be guaranteed and cannot be used for contracts.*