



Grand Banks 46 Classic 'SEAWIND'

LOA (m):	14.35 m
Beam (m):	4.50 m
Draft (m):	1.28 m
Engines:	2x 430hp Cummins
Cabins:	3
Homeport:	Heeg, Netherlands
Price:	€ 525,000

The 2005 Grand Banks 46 Classic 'Seawind' is one of the last examples of the iconic GB46 model line. Seawind combines timeless elegance, many sought-after options, and recent upgrades, offering a unique cruising experience. Key features and upgrades include:

- 3-cabin layout with a large owner's cabin
- Top speed of 19 knots and a cruising speed of 16 knots
- Air conditioning throughout the vessel
- Kabola Central Heating System
- Hydraulic Sidepower bow and stern thrusters
- Modern Raymarine navigation equipment
- DMS Magnus Master stabilizers from 2023



MARITEAM

- YACHTING -

MARITEAM YACHTING

De Draei 29, 8621 CZ Heeg 📍 The Netherlands 📞 Phone +31 (0) 582 889254
info@mariteamyachting.nl 🌐 www.mariteamyachting.nl

Main specifications

Model:	Grand Banks 46 Classic
LOA (m):	14.35 m
Beam (m):	4.50 m
Draft (m):	1.28 m
Year:	2005
Hull Material:	GRP
Cabins:	3
Sleeping places:	6
Number of main engine(s):	2
Power of main engine(s) (hp):	430
Brand of main engine(s):	Cummins
Price:	€ 525,000
VAT status:	EU VAT paid
HIN number:	MY-GNDF0278A505
Trade-in possible:	Trade-in negotiable

General

Name :	Seawind
Shipyard:	American Marine Signapore Ltd.
Air draft (m):	4.40m / 7.95m
Displacement (t):	19.5t
Hull material:	GRP
Deck material:	GRP
Superstructure material:	GRP
Deck finish:	Teak
Window material:	Safety single glass

Fuel tank (Litre and material):	2271 L, Steel
Freshwater Tank (Liter and material):	640 L, GRP
Antifouling (Year):	2023/2024
Maximum speed (Kn):	19kn
Cruising speed (Kn):	low 8kn / high 16kn

Accommodation

Stove:	Gaggenau 4 burner, electric
Refrigerator:	Gaggenau
Freezer:	Freezer compartment in fridge
Interior finish:	Teak
Washing machine/Dryer:	Daewoo mini
Single berths:	2x (v-bed)
Double bed:	2 two person bed
Cabins:	3 cabins
Toilets:	2x electric, Tecma
Showers:	2 showers
Combi oven/microwave:	Panasonic

Machinery

Port engine (Brand, type, hp, gearbox):	Cummins 6CTA 8.3M3 430PK, ZF Marine
Engine hours port engine:	1990
Star engine (Brand, type, hp, gearbox):	Cummins 6CTA 8.3M3 430PK, ZF Marine
Engine hours starboard engine:	1990
Main engines control (Brand and type):	Panisch controls dual lever

Drive (Shaft, IPS, Jet):	Drive shaft
Rope cutter on propulsion:	present
Generator (Brand, type, Kw):	Onan 7Kw
Bowthruster (Brand, type, elec/hyd):	Side Power SH240, Hydraulic
Sternthruster (Brand, type, elec/hyd):	Side Power SH240, Hydraulic
Electrical bilge pump:	3x Rule industries
Water pressure pump (Brand, model):	Jabsco
Hot water system:	Kabola KB40 Combi Ecoline
Heating system (brand, model, type):	Kabola, Central heating
Airconditioning system (Brand, model):	3x Marine Air
Trim system:	present
Stabilizer system:	DMS Magnus Master (2023)
Macerator pump:	present
Deckwash:	Present, via watertank

Electrical system

House battery (Number of battery,type, total Amp, year):	6x Varta 12/240
Start battery (Number of battery,type, total Amp, year):	2x optima 12V
DC system (V) AC system (V):	12 V / 220 V
Inverter (V/W/Amp):	Victron Energy Quattro 12/5000/220 (2021)
Battery charger (V/W/Amp):	Victron Energy Quattro 12/5000/220 (2021)

Safety system

Radar reflector:	Echomax Active Reflector
------------------	--------------------------



Life raft:	Plastimo Transocean 6 pers.
Fire alarm:	present

Navigation system

Compass:	Raymarine Axion Pro + 2x Ritchie
Gps plotter:	Raymarine Axiom Pro 12s
Radar screen:	Raymarine Axiom Pro 16s / Pro 12s / 9
Radar :	Raymarine Quantum 2
Wind meter :	Raymarine
VHF:	Raymarine
Autopilot:	P70R
Rudder indicator:	VDO

Equipment

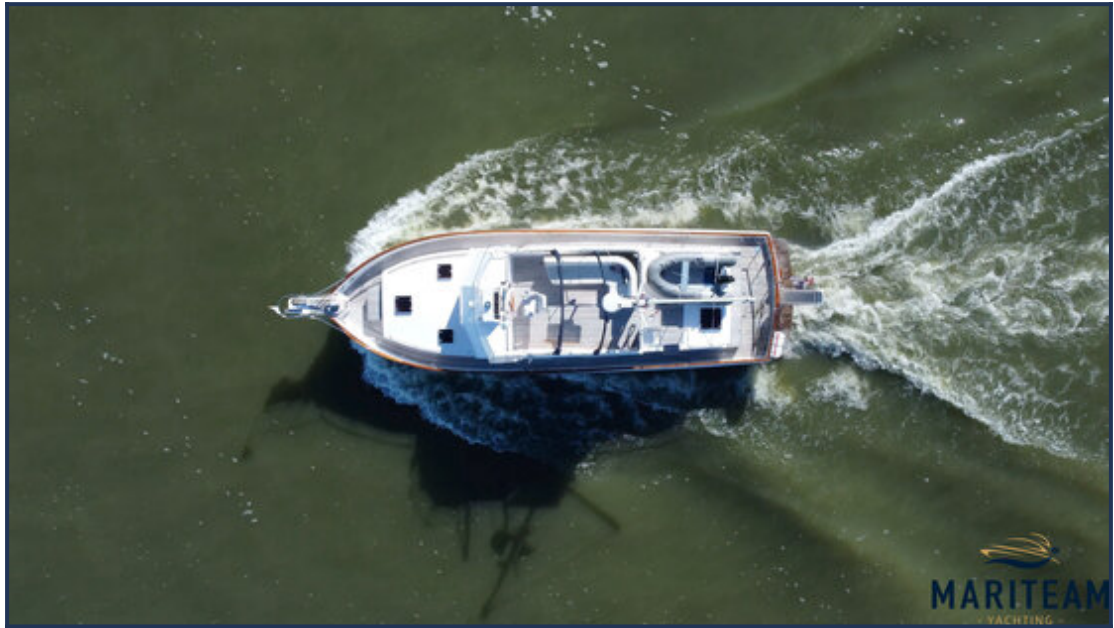
Anchor:	Genuine Bruce with electric winch
Gangway:	Bensensoni, Hydraulic
Tender crane:	Winch on the boom with electric winch handle
Tender:	Vortex with Mercury outboard
Deck shower:	On aft deck, hot and cold
Window ventilation:	Slide and tilt windows
Horn:	kahlenberg





















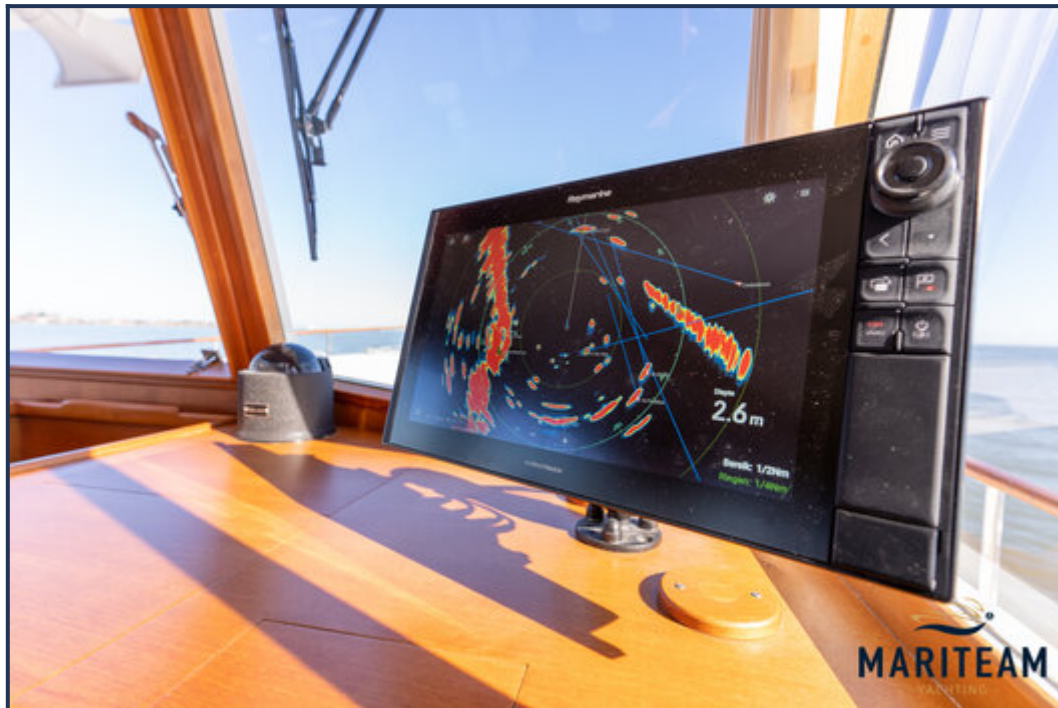






































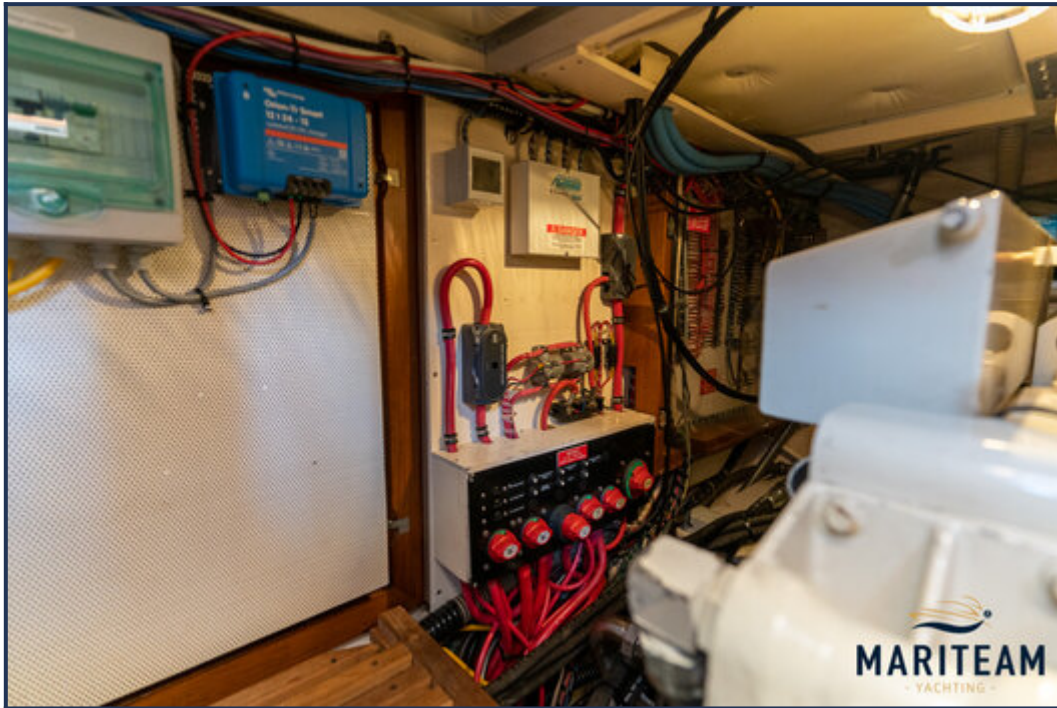












These particulars are given in good faith as supplied but cannot be guaranteed and cannot be used for contracts.