



# MARITEAM

- YACHTING -



## Grand Banks 52 Europa 'ROSE'

LOA (m):	16.48 m
Beam (m):	4.70 m
Draft (m):	1.47 m
Engines:	2x 435hp Caterpillar
Cabins:	3
Homeport:	Salesoffice, Heeg
Price:	€ (not set)

The Grand Banks 52 Europa 'ROSE' offers space, comfort, and luxury on the water. The 'ROSE' accommodates 8 guests and 4 crew members. Some highlights of the 'ROSE' are:

- Air conditioning in almost the entire ship
- Both bow and stern thrusters
- Watermaker
- Thrust bearings
- Camera over the aft deck

**MARITEAM YACHTING**

De Draei 29, 8621 CZ Heeg 📍 The Netherlands 📞 Phone +31 (0) 582 889254

[info@mariteamyachting.nl](mailto:info@mariteamyachting.nl) 📧 [www.mariteamyachting.nl](http://www.mariteamyachting.nl)

## Main specifications

Model:	52 Europa
LOA (m):	16.48 m
Beam (m):	4.70 m
Draft (m):	1.47 m
Year:	2001
Hull Material:	GRP
Cabins:	3
Sleeping places:	8
Number of main engine(s):	2
Power of main engine(s) (hp):	435
Brand of main engine(s):	Caterpillar
Price:	€ (not set)
VAT status:	EU VAT Paid
HIN number:	GNDL0024G102

## General

Name :	Rose
Shipyard:	Grand Banks Yachts
CE-category:	Category A
Cruising speed (Kn):	12
Maximum speed (Kn):	17
Air draft (m):	4.85 (TOW) / 6.43 (TOM)
Displacement (t):	26 T
Fuel tank (Litre and material):	4500L
Freshwater Tank (Liter and material):	1892L
Black water tank (Litre and material):	2x 117L

Hull material:	GRP
Superstructure material:	GRP
Deck material:	GRP
Deck finish:	Teak
Interior finish:	Teak
Window ventilation:	Slide and tilt windows

## Accommodation

Cabins:	3 cabins + 2 crew cabins
Double bed:	2x
Single berths:	4x
Showers:	2x
Toilets:	2x electric
Heating system (brand, model, type):	Marine air systems
Airconditioning system (Brand, model):	Marine Air Systems, Saloon, Pilot house, Gastcabins
Stove:	3-burner gas
Oven:	Force 10, Gas
Microwave:	Sharp
Refrigerator:	2x Bosch Exclusiv
Freezer:	2x compartment in the fridge
Dish washer:	Bosch Super Silence
Washing machine/Dryer:	AEG 7000 series kombi

## Machinery

Main engines control (Brand and type):	Panisch controls
----------------------------------------	------------------

Port engine (Brand, type, hp, gearbox):	Caterpillar 3208TA, Twindisk
Engine hours port engine:	3160
Star engine (Brand, type, hp, gearbox):	Caterpillar 3208TA, Twindisk
Engine hours starboard engine:	3153
Steering system:	Hydraulic
Drive (Shaft, IPS, Jet):	Shaft drive
Shaft lubrication:	Water lubricated
Generator (Brand, type, Kw):	Onan v2203 17.5kw
Generator hours:	2139
Bowthruster (Brand, type, elec/hyd):	Vetus, electric
Sternthruster (Brand, type, elec/hyd):	Max power electric
Watermaker:	Idromar
Hot water system:	Raritan Boiler 75.7L
Macerator pump:	Sealand

## Electrical system

DC system (V) AC system (V):	12V/240V
Battery charger (V/W/Amp):	SBC 700 12v/60a + Mastervolt Chargemaster 12/25-3 + 2x Victron energy 24/15
Inverter (V/W/Amp):	Mastervolt Mass Combi Ultra 12/3000
House battery (Number of battery,type, total Amp, year):	4x Motive 12v / 225 Ah
Start battery (Number of battery,type, total Amp, year):	4x Exide 12v
Bowthruster battery (Number of battery,type, total Amp, year):	4x 12v

## Safety system

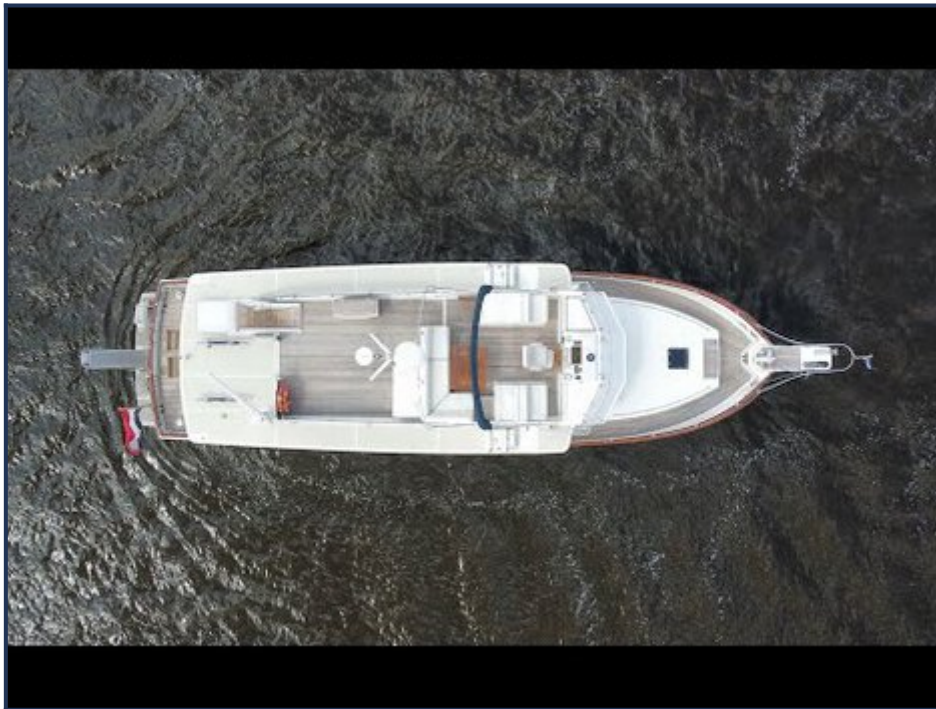
Electrical bilge pump:	3x Rule
Fire extinguisher engine room:	2x Mabo extinguish system
Fire alarm:	through out the ship
Gas detector:	through out the ship
Horn:	present

## Navigation system

Compass:	2x Ritchie
Gps plotter:	2x Raymarine Hybridtouch
Radar :	Raymarine
Autopilot:	Raymarine ST8001
Rudder indicator:	VDO
Log:	Furuno GP-32
Depth meter:	Raytheon ST60
VHF:	Shipmate 8400
AIS:	present

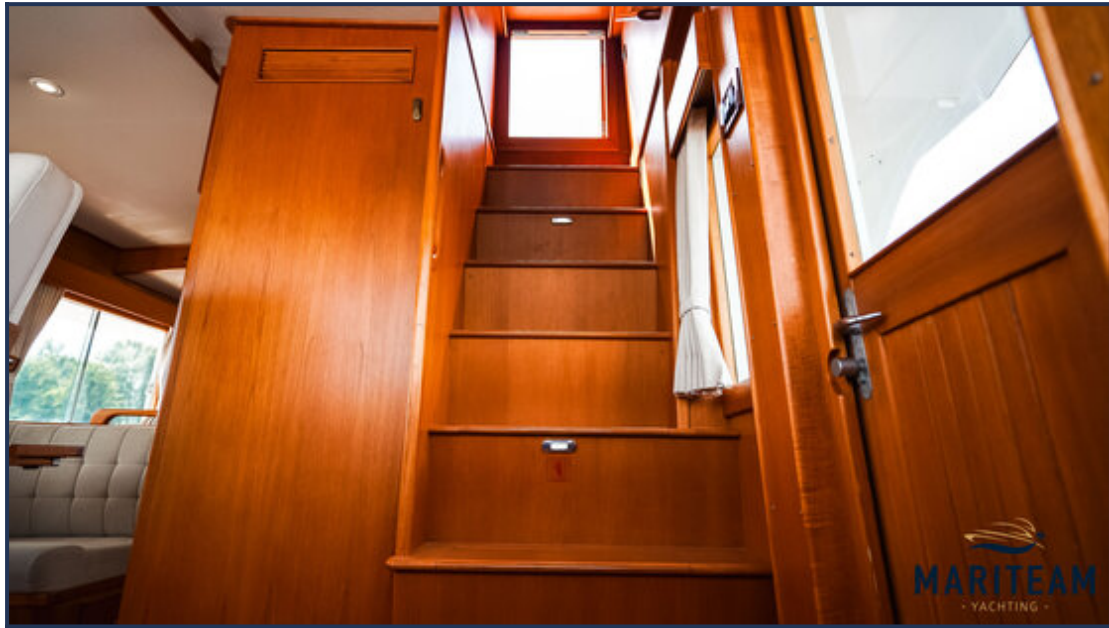
## Equipment

Tender crane:	MarQuipt
Gangway:	Besenzoni
Deckwash:	present
Deck shower:	Hot & cold

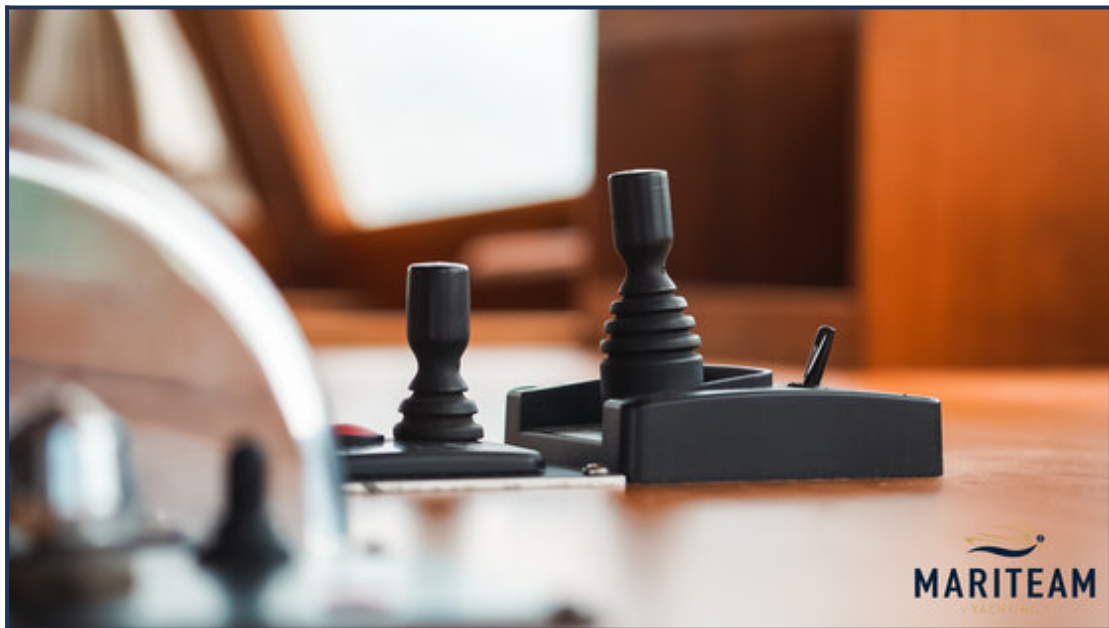


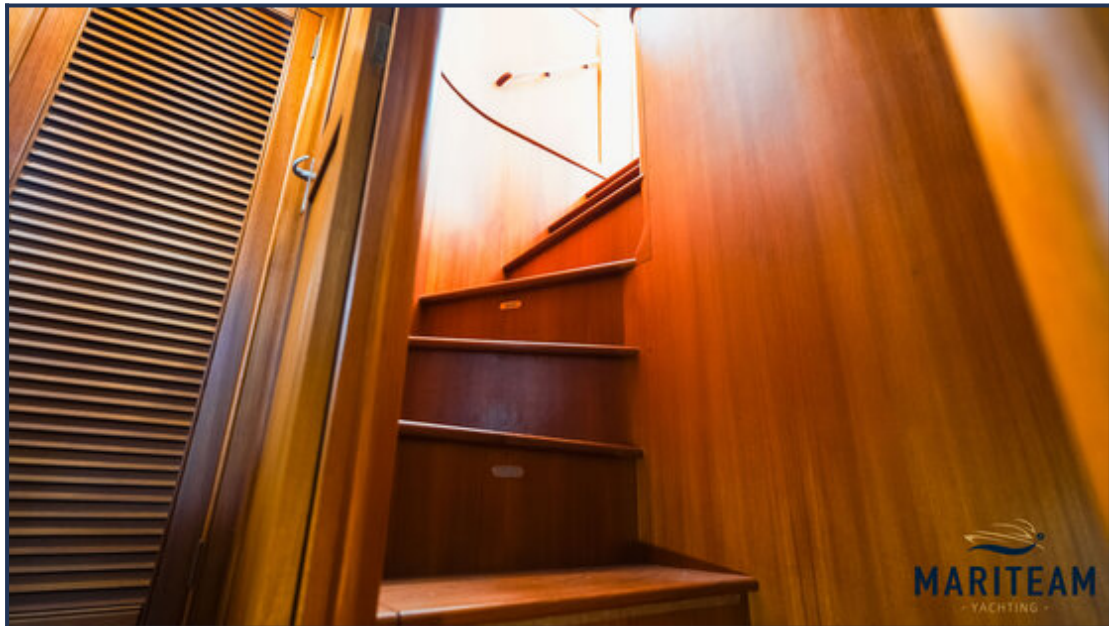








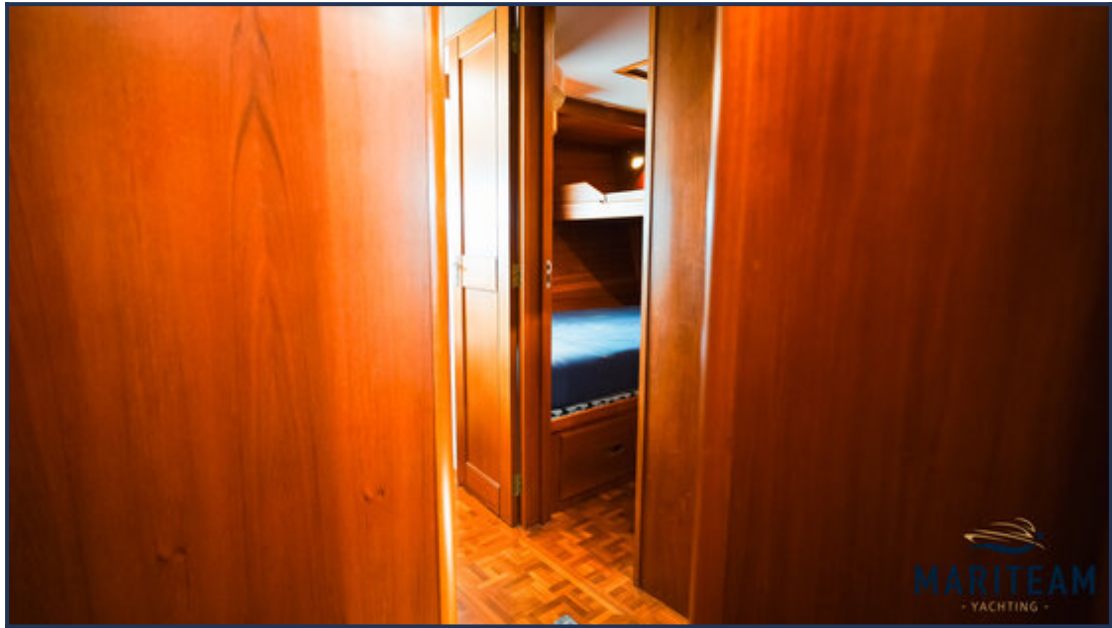


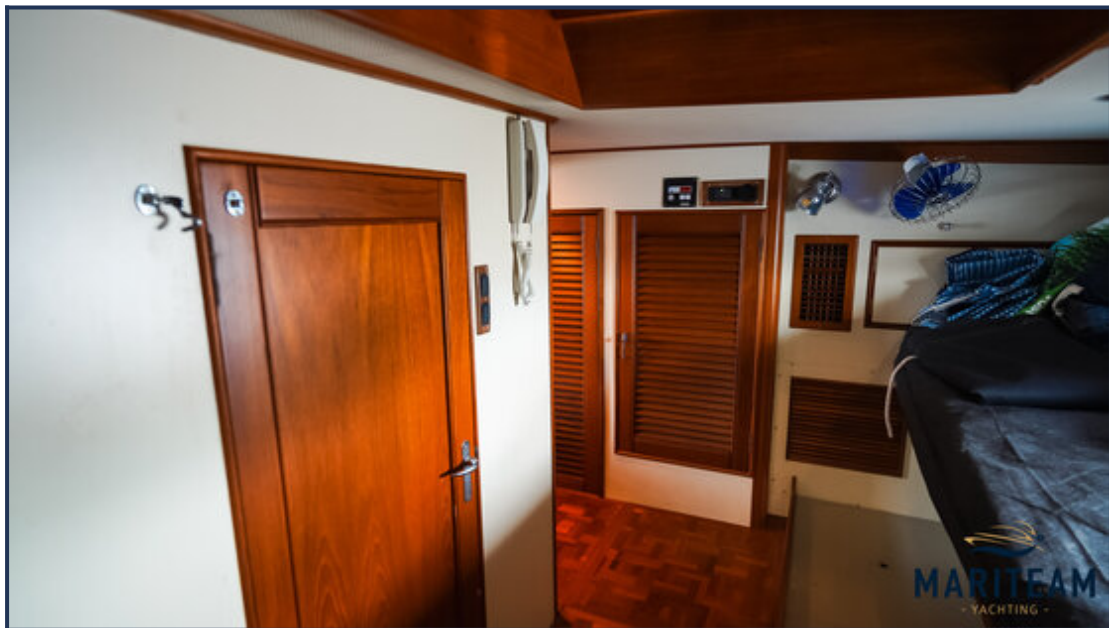
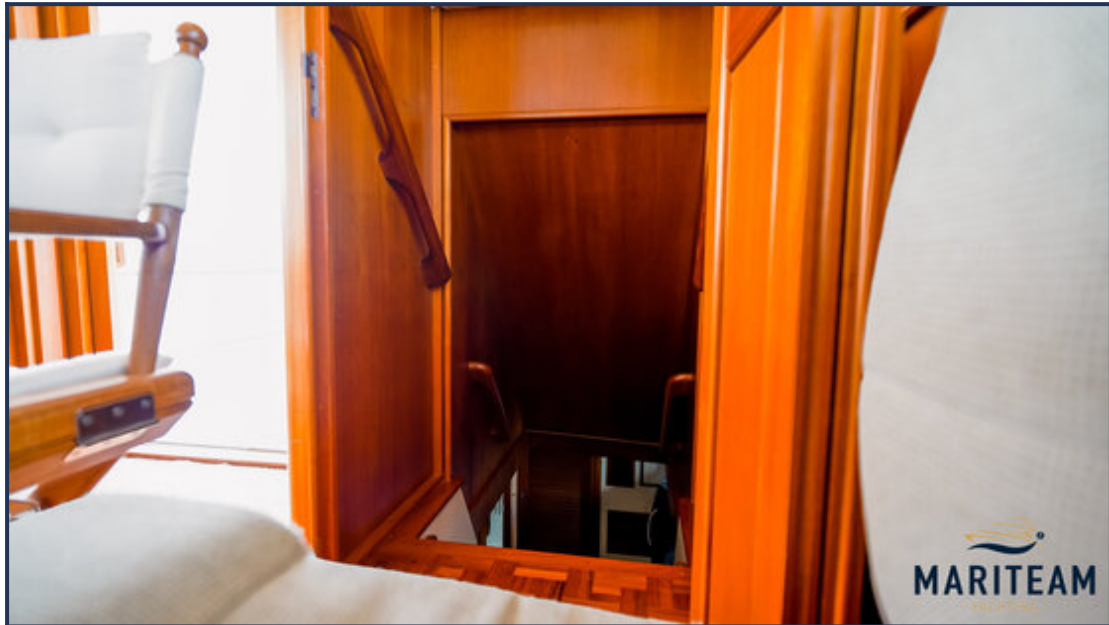










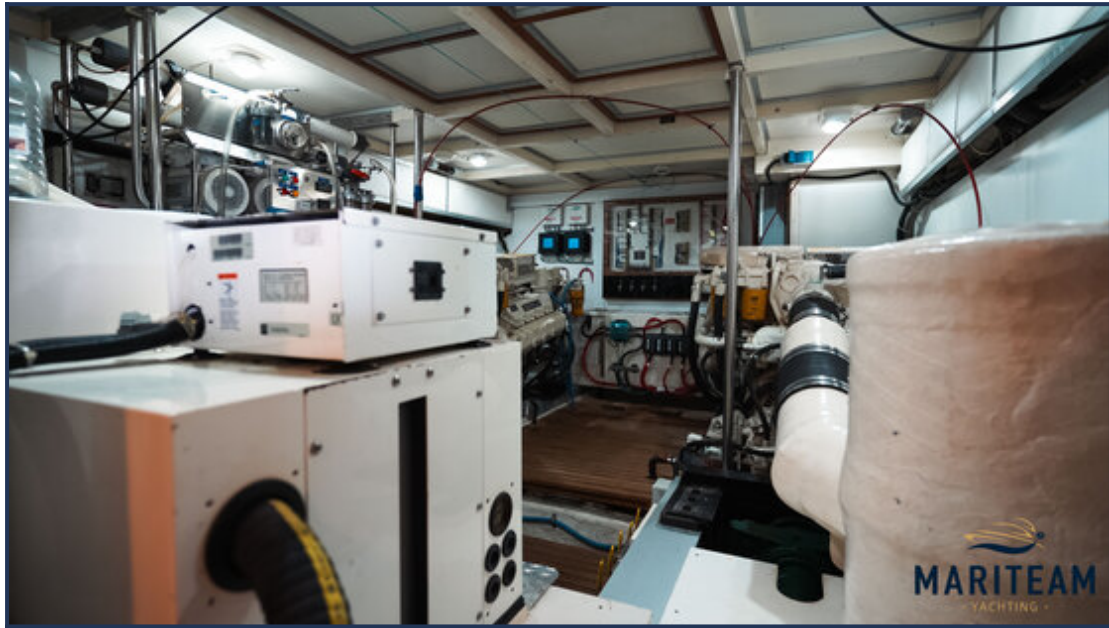


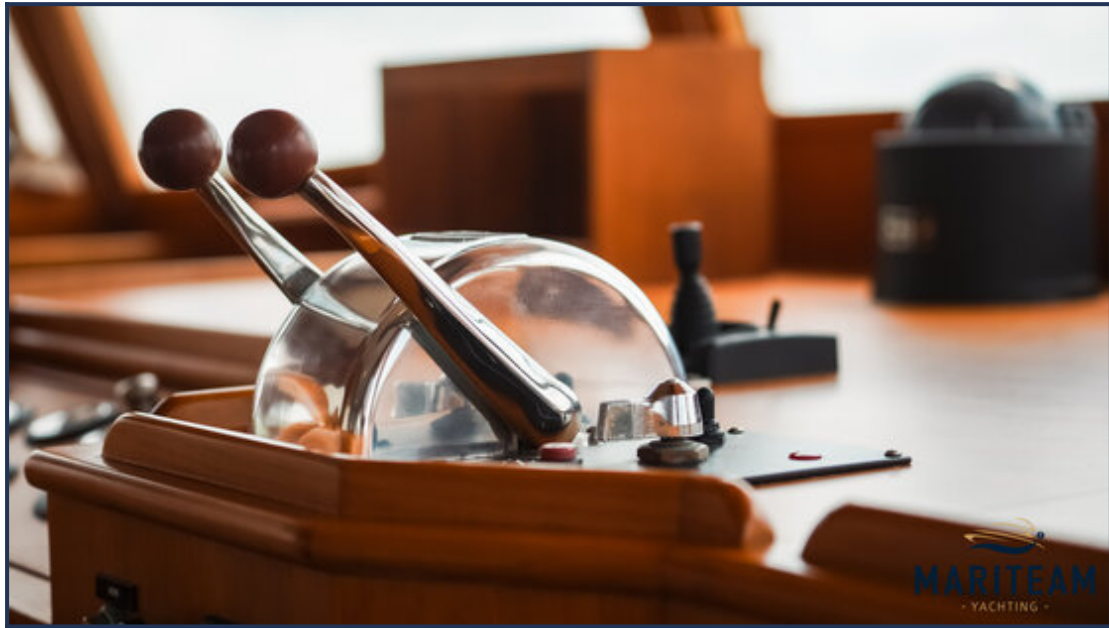










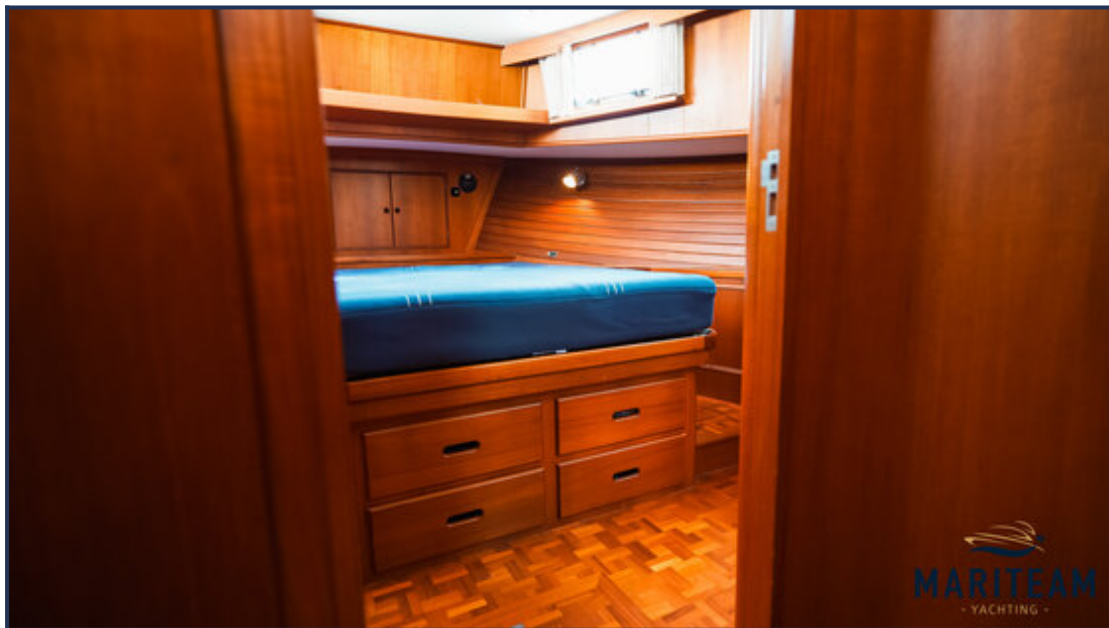


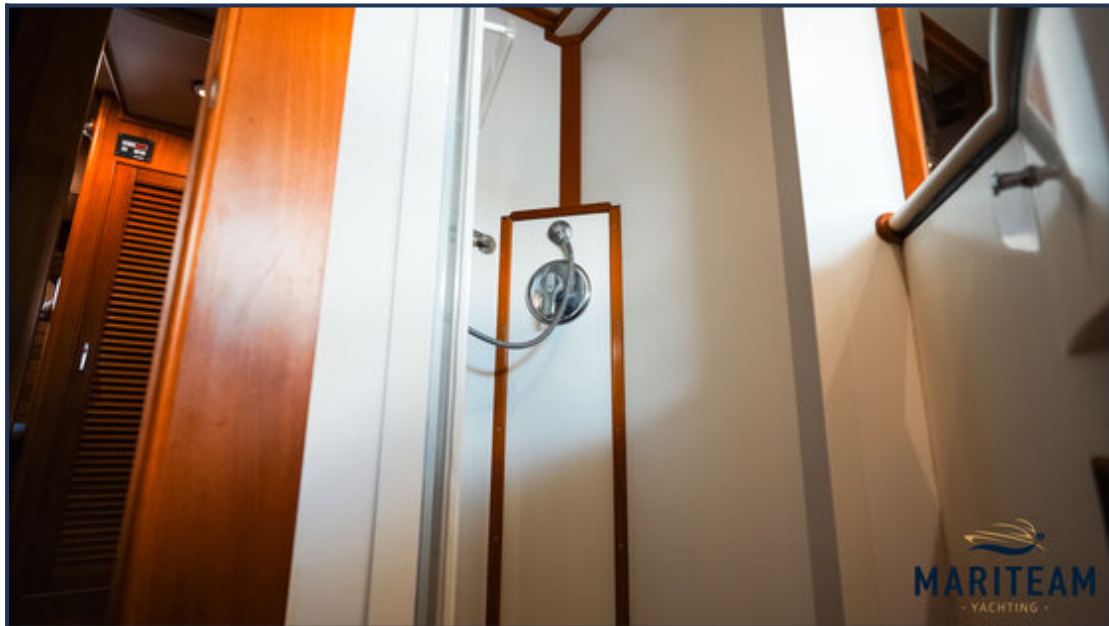






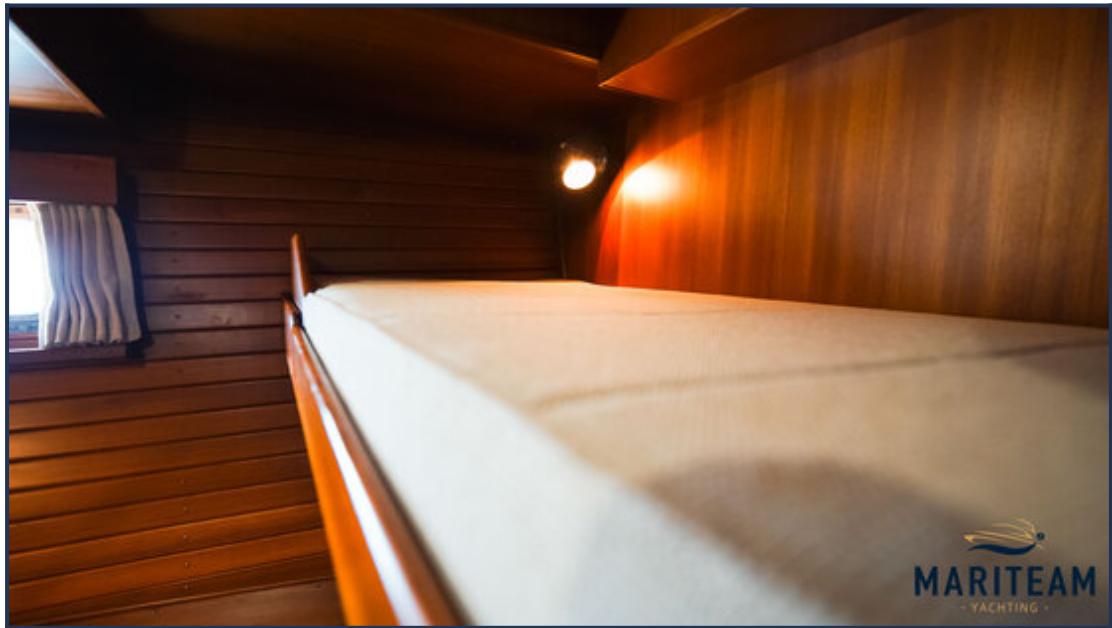












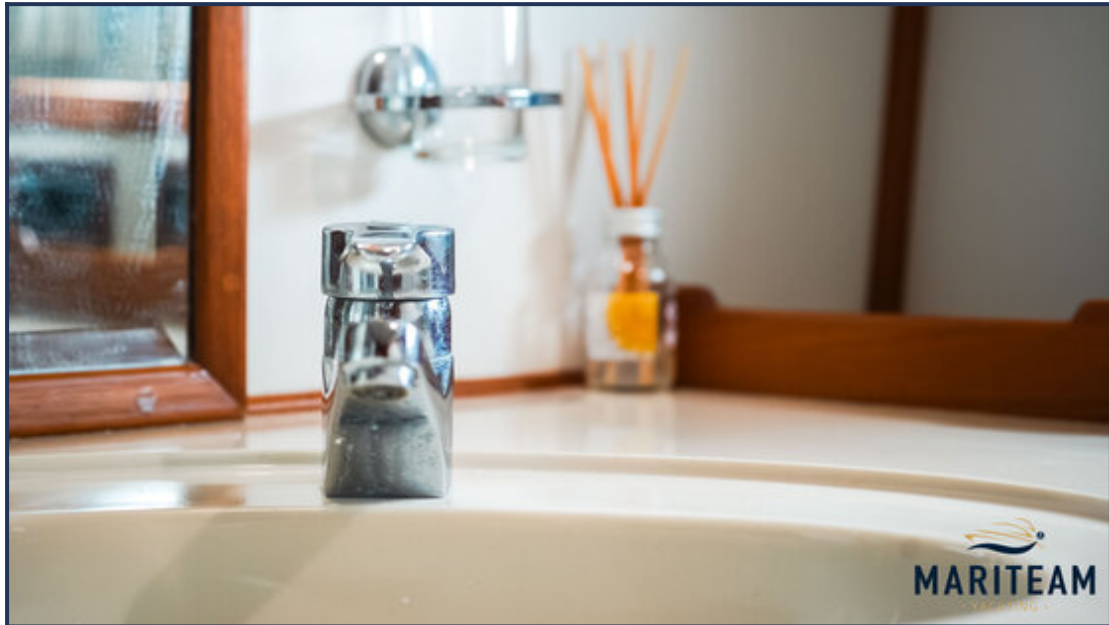


















*These particulars are given in good faith as supplied but cannot be guaranteed and cannot be used for contracts.*