



MARITEAM

- YACHTING -



MARITEAM
- YACHTING -

Grand Banks 49 Motoryacht 'ROSU'

LOA (m):	15.39 m
Beam (m):	4.70 m
Draft (m):	1.55 m
Engines:	2x 375hp Caterpillar
Cabins:	2
Homeport:	Sales office, Heeg
Price:	€ (not set)

This spacious Grand Banks 49 Motor Yacht offers all the amenities for extended stays on board. The generously designed interior features two cabins with ensuite bathrooms, a separate laundry room, a spacious salon, a fully equipped galley-down with dinette, a cozy dining area, and two delightful outdoor seating areas protected from the sun.

MARITEAM YACHTING

De Draei 29, 8621 CZ Heeg 📍 The Netherlands 📞 Phone +31 (0) 582 889254
info@mariteamyachting.nl 🌐 www.mariteamyachting.nl

Main specifications

Model:	49 Motoryacht
LOA (m):	15.39 m
Beam (m):	4.70 m
Draft (m):	1.55 m
Year:	1991
Hull Material:	GRP
Cabins:	2
Sleeping places:	6
Number of main engine(s):	2
Power of main engine(s) (hp):	375
Brand of main engine(s):	Caterpillar
Price:	€ (not set)
VAT status:	EU Paid
HIN number:	GNDE0096F191

General

Name :	Rosu
Shipyard:	American Marine
Cruising speed (Kn):	9
Maximum speed (Kn):	16
Air draft (m):	4.67
Displacement (t):	27
Fuel tank (Litre and material):	2400L (2023/2024)
Freshwater Tank (Liter and material):	1892L
Black water tank (Litre and material):	present
Hull material:	GRP

Superstructure material:	GRP
Deck material:	GRP
Deck finish:	Teak + GRP
Interior finish:	Teak
Window material:	Single safety glass
Window ventilation:	Sliding and tilting windows

Accommodation

Double bed:	1x
Single berths:	2 + 2
Showers:	2x
Toilets:	1x elektrik, 1x vacuflush
Heating system (brand, model, type):	Kabola, Central heating
Airconditioning system (Brand, model):	Marine air systems
Stove:	Inventum, electric, 4 burner (2021)
Microwave:	Pelgrim
Refrigerator:	Vitifrigo 240L
Freezer:	Vitifrigo
Ice cubes maker:	U-line
Washing machine:	AEG
Dryer:	Candy
TV:	1x samsung, 1x philips
Radio:	JVC

Machinery

Main engines control (Brand and type):	Morse 4 handle
Port engine (Brand, type, hp, gearbox):	Caterpillar 3208 TA, 375hp, MG507-1
Engine hours port engine:	3185
Star engine (Brand, type, hp, gearbox):	Caterpillar 3208 TA, 375hp, MG507-1
Engine hours starboard engine:	2940
Steering system:	Hydraulic
Drive (Shaft, IPS, Jet):	Shaft
Shaft lubrication:	Water
Prop (Number of blades, material):	Stone Marine, 3 blade
Generator (Brand, type, Kw):	Onan 16KW
Generator hours:	1166
Bowthruster (Brand, type, elec/hyd):	Side power
Watermaker:	Selmar
Water pressure pump (Brand, model):	Jabsco
Hot water system:	Isotemp boiler, 50L
Macerator pump:	Sealand
Trim system:	Bennet

Electrical system

DC system (V) AC system (V):	12V /220V
Battery charger (V/W/Amp):	Victron Blue smart charger 12/30/ 3 outputs
Inverter (V/W/Amp):	Victron multiplus 12/1600/70
House battery (Number of battery,type, total Amp, year):	2x SFM 230Ah
Start battery (Number of battery,type, total Amp, year):	1x SMF 180Ah, 1x SMF 230Ah
Generator battery (Number of battery,type, total Amp, year):	1 x SMF 180Ah

Bowthruster battery (Number of battery,type, total Amp, year):	2x
Galvanic isolater:	Isolation Transformer 3600w

Safety system

Electrical bilge pump:	2x Rule industries
Manual bilge pump:	2x Rule industries
Radar reflector:	present
Fire extinguisher engine room:	Solide, automatic
High water alarm:	present

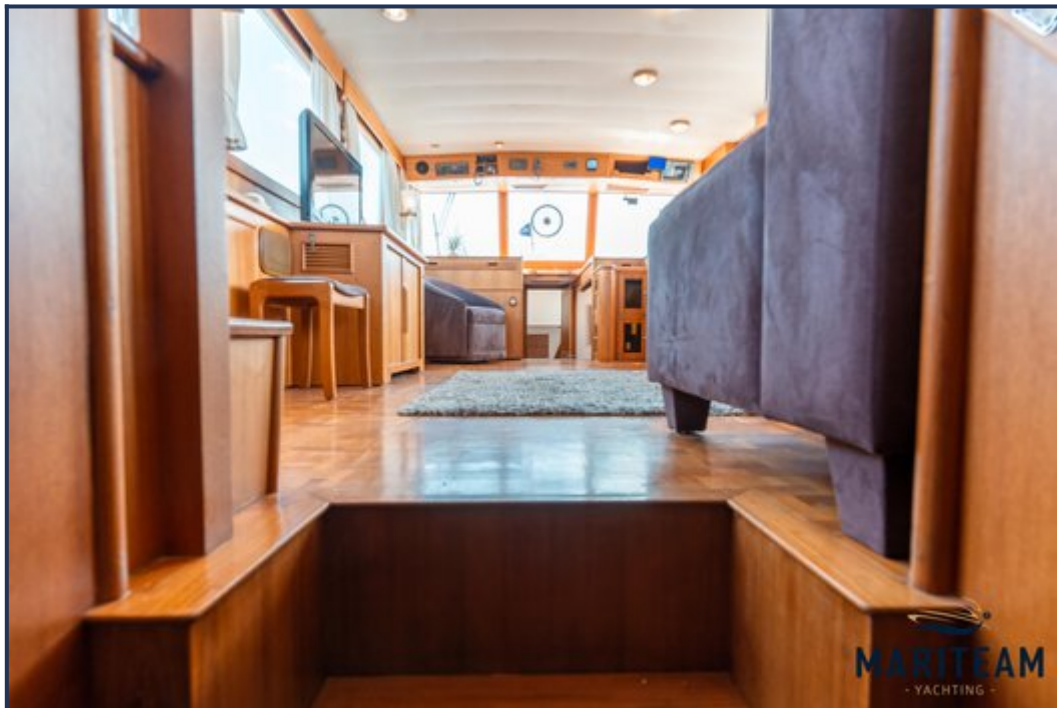
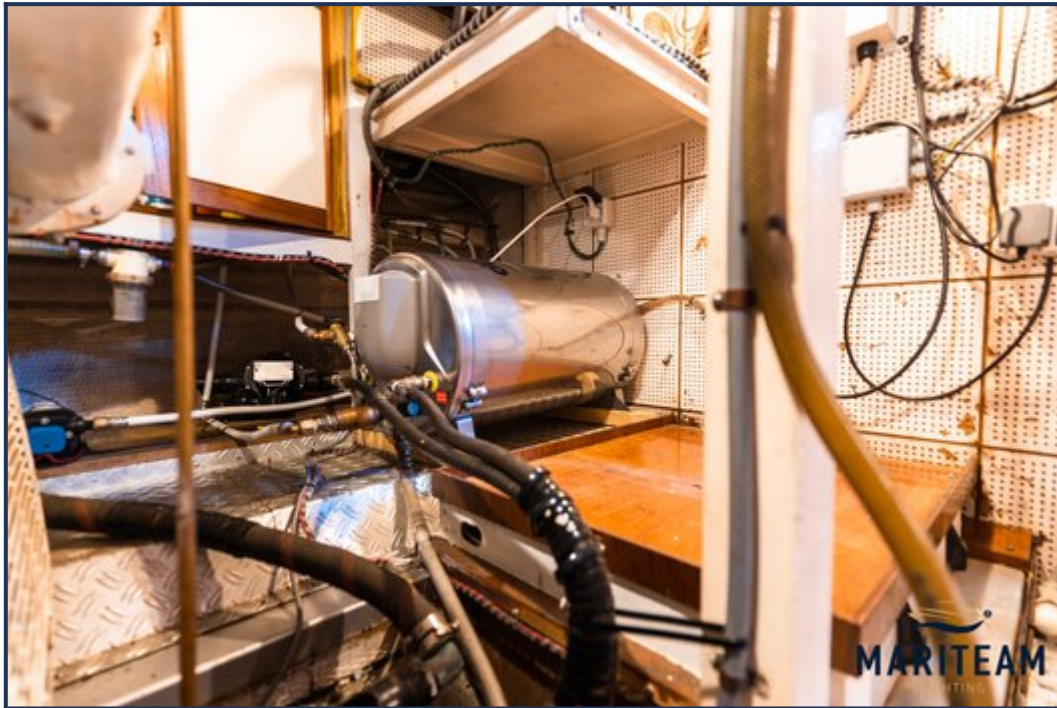
Navigation system

Compass:	Danforth
Gps plotter:	Raymarine E90
Radar screen:	Raymarine E90
Radar :	RD424HD 4Kw 24''
Autopilot:	Raymarine + controller
Rudder indicator:	VDO
Log:	Raymarine I70
Depth meter:	Raymarine I70
Wind meter :	Raymarine ST40
VHF:	Simrad RS82
AIS:	present

Equipment

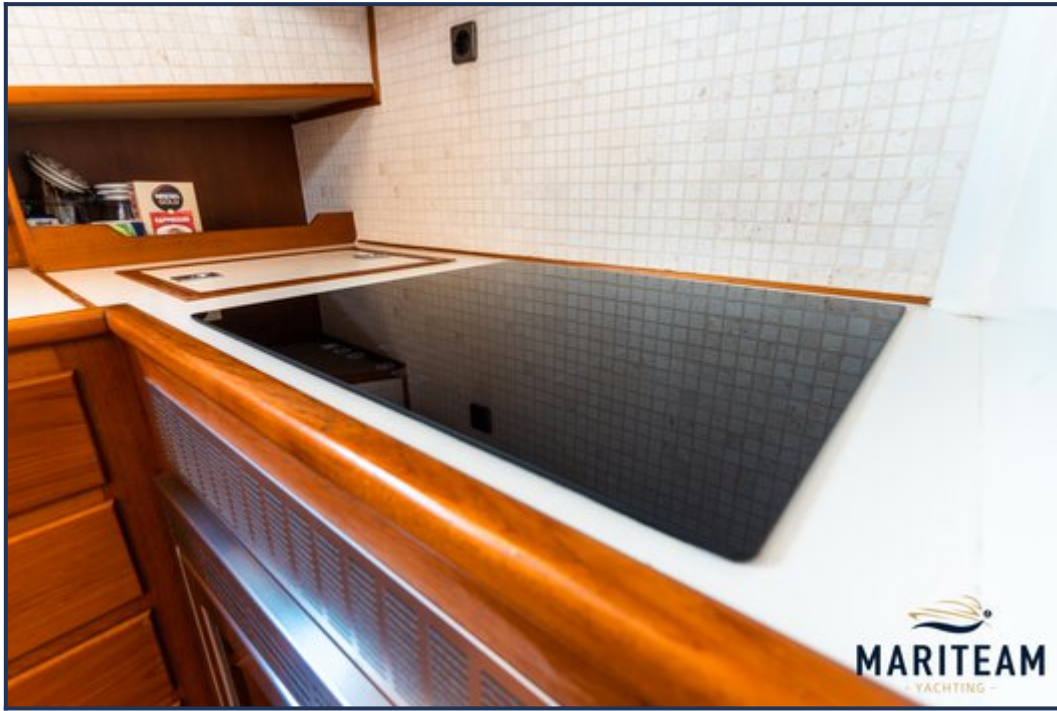
Tender crane:	Via Gangway
Gangway:	Besenzoni
Anchor:	1x
Windlass:	Lofrans Tigres
Deckwash:	1x
Deck shower:	1x hot/cold

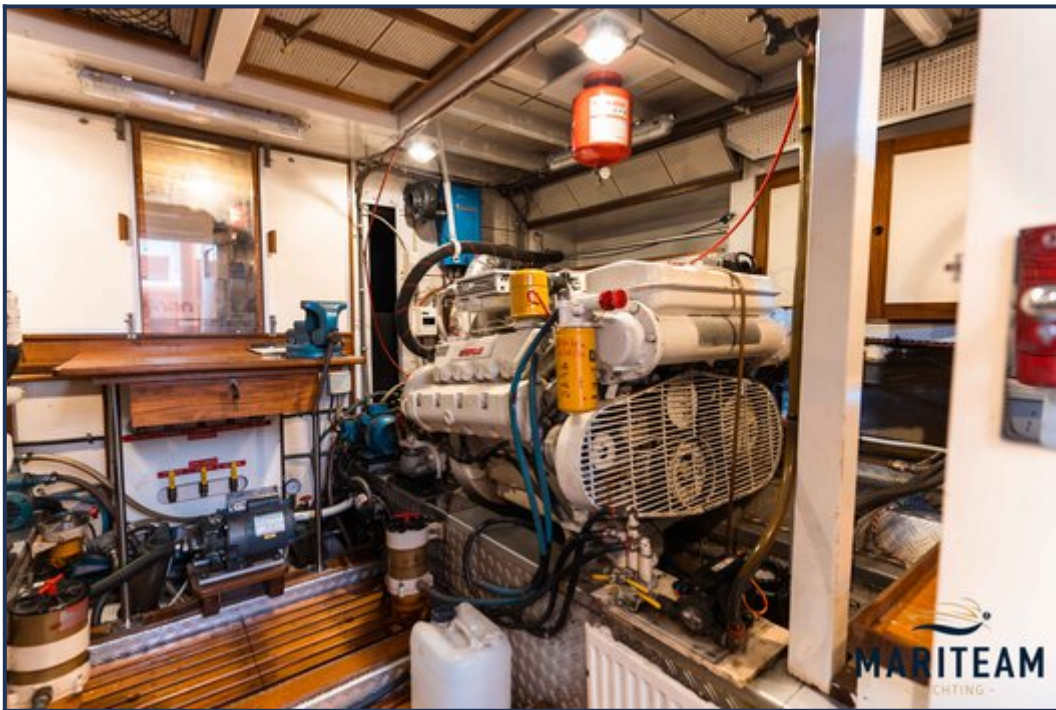


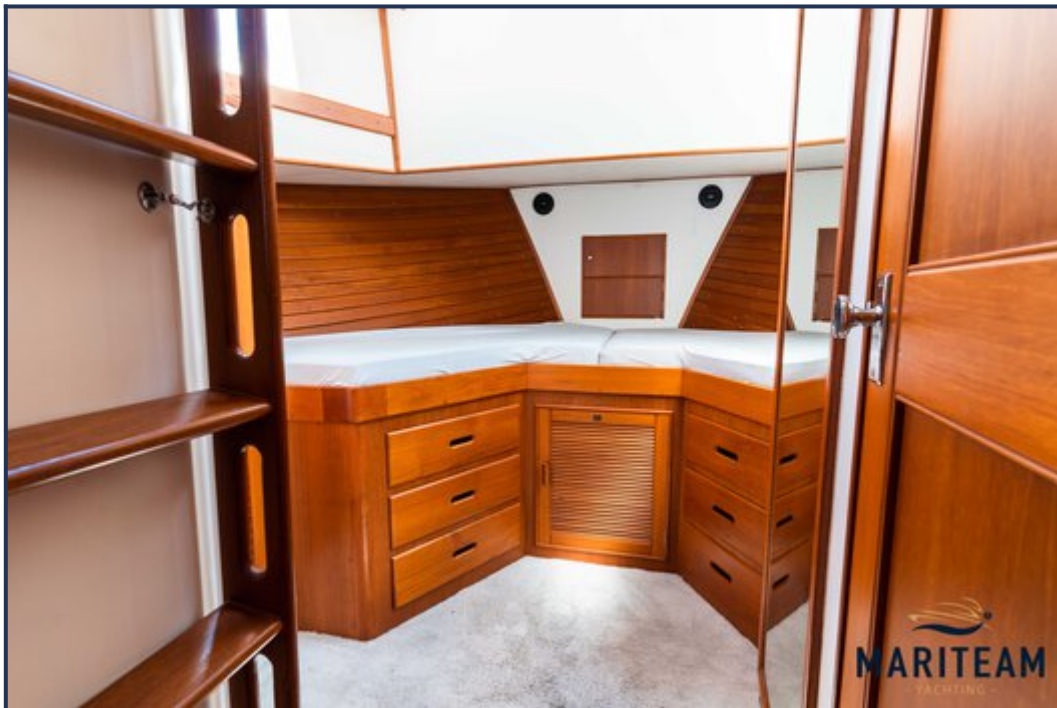






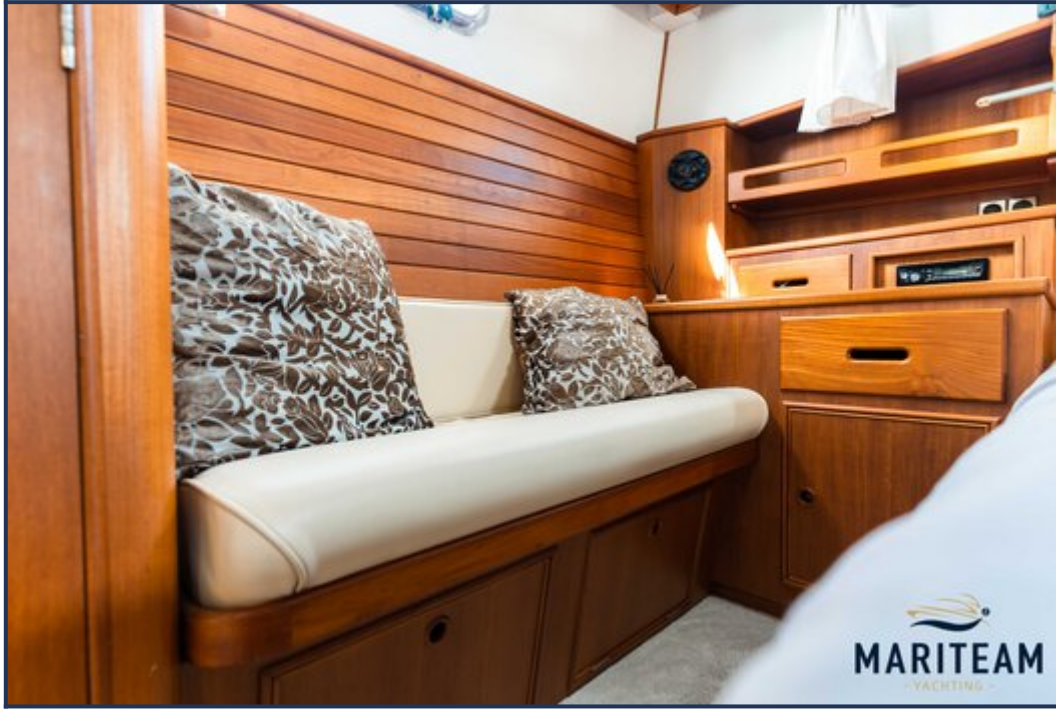














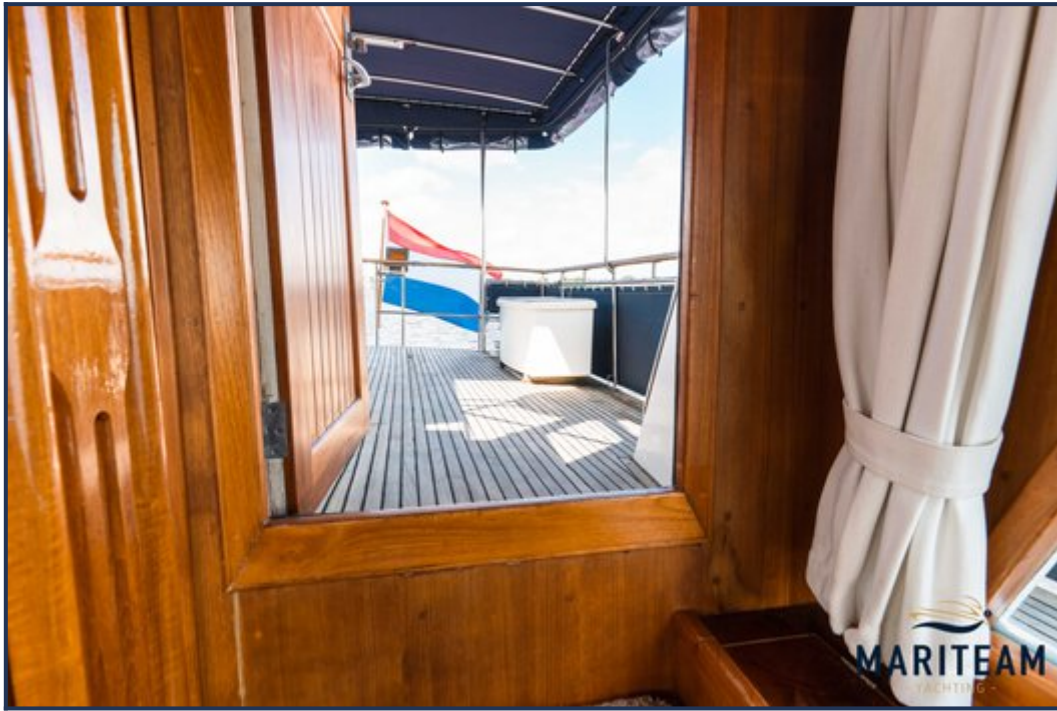




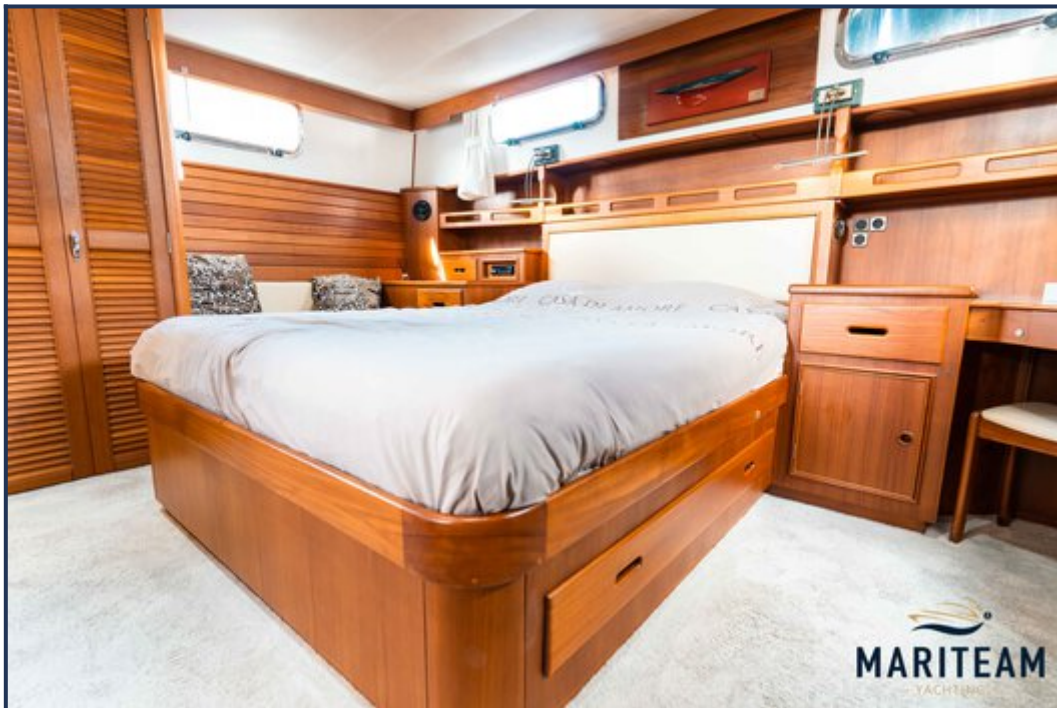






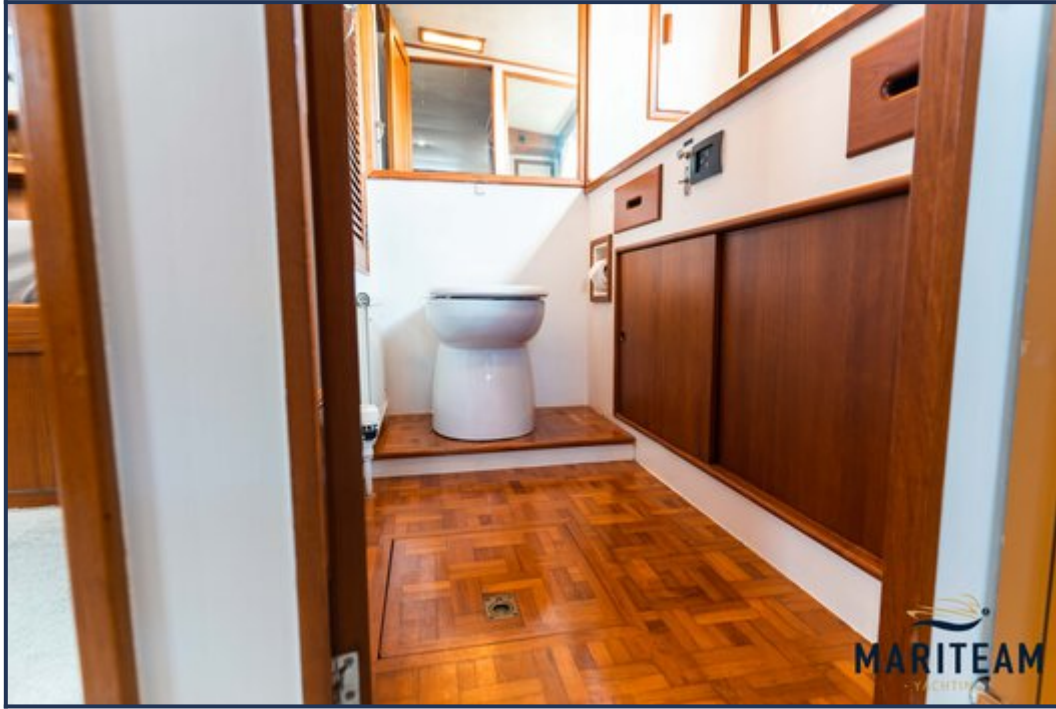


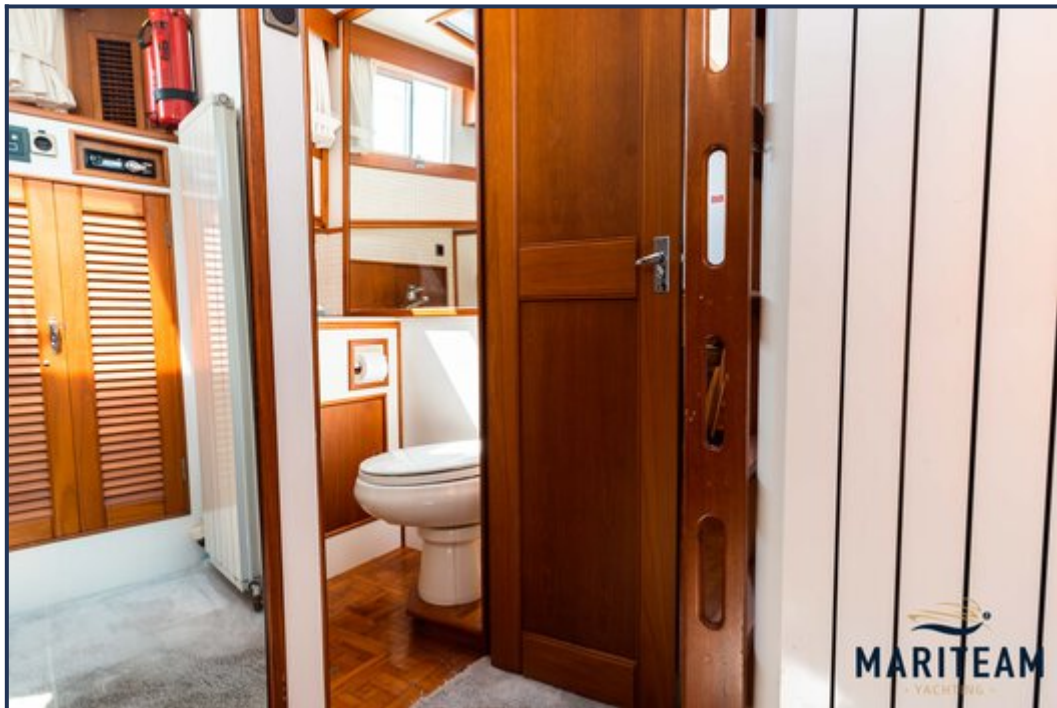




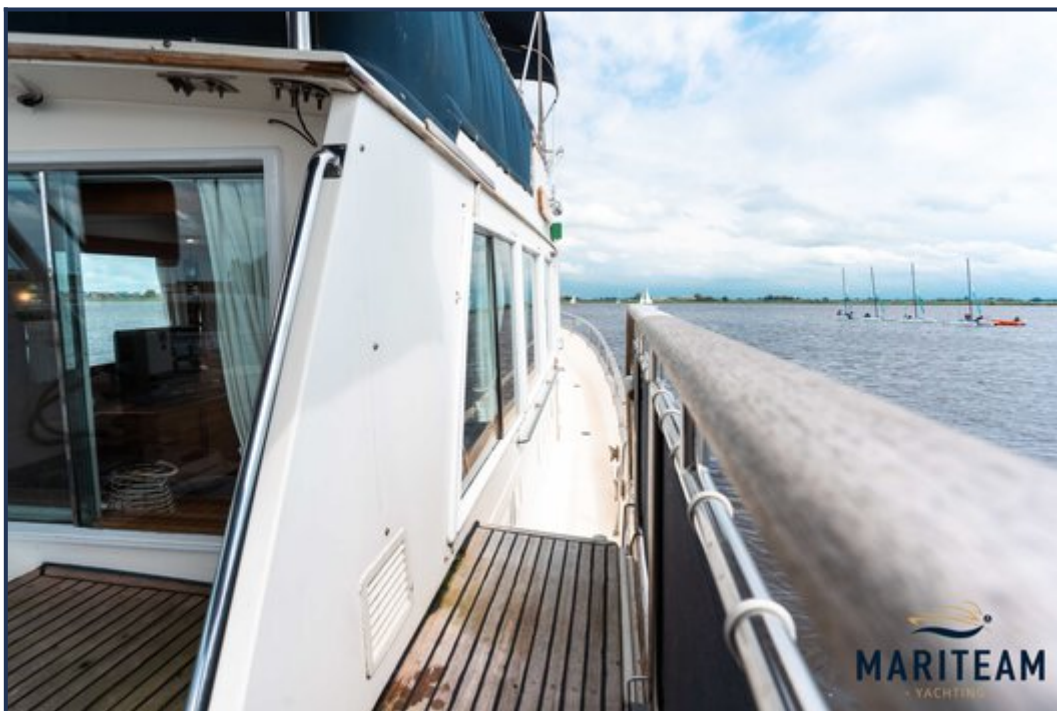






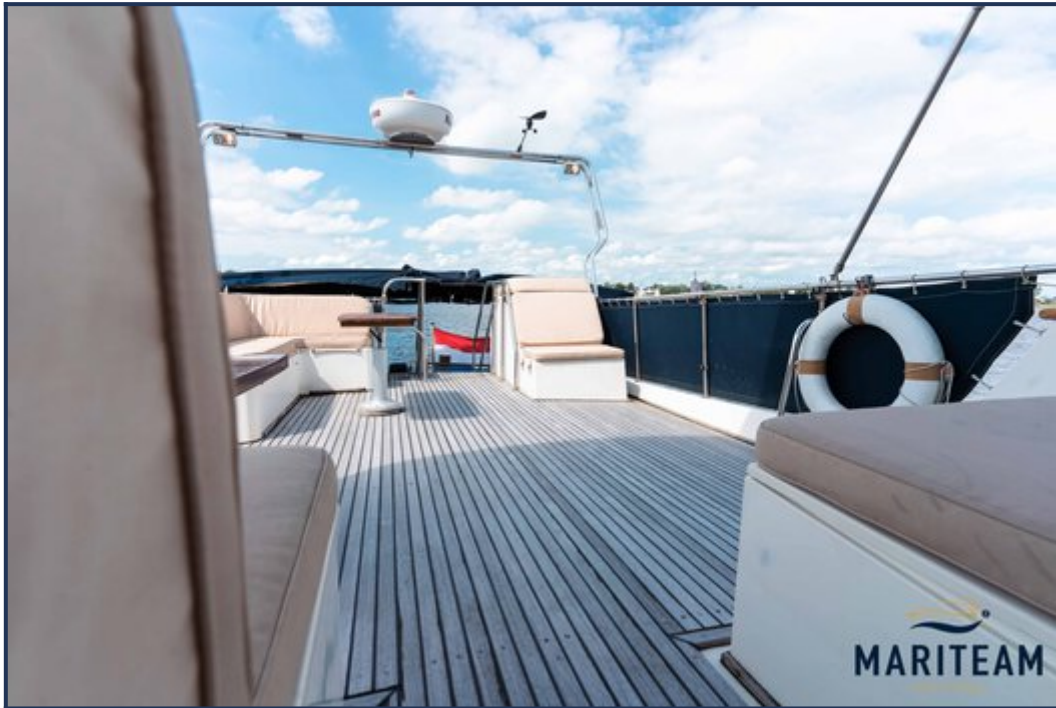




















These particulars are given in good faith as supplied but cannot be guaranteed and cannot be used for contracts.