



Grand Banks 42 Europa 'HELENE'

| | |
|------------|----------------------|
| LOA (m): | 12.98 m |
| Beam (m): | 4.14 m |
| Draft (m): | 1.27 m |
| Engines: | 2x 250hp Cummins |
| Cabins: | 2 |
| Homeport: | Hamburger Jachthaven |
| Price: | € (not set) |

This classic and extremely popular Grand Banks offers a timeless design and excellent performance. The spacious interior includes two cabins, a bathroom, and a large salon with a comfortable sofa and a three-seater couch.

Main specifications

| | |
|-------------------------------|--------------|
| Model: | 42 Europa |
| LOA (m): | 12.98 m |
| Beam (m): | 4.14 m |
| Draft (m): | 1.27 m |
| Year: | 1991 |
| Hull Material: | GRP |
| Cabins: | 2 |
| Sleeping places: | 4 |
| Number of main engine(s): | 2 |
| Power of main engine(s) (hp): | 250 |
| Brand of main engine(s): | Cummins |
| Price: | € (not set) |
| VAT status: | EU paid |
| HIN number: | GNDD1225I192 |

General

| | |
|---------------------------------|------------------------|
| Name : | Helene |
| Shipyard: | American Marine |
| Air draft (m): | 4.15 top of windshield |
| Displacement (t): | 15.4 |
| Hull material: | GRP |
| Deck material: | GRP |
| Superstructure material: | GRP |
| Deck finish: | Teak |
| Window material: | Safety single glass |
| Fuel tank (Litre and material): | 2271L |

| | |
|--|---------------|
| Freshwater Tank (Liter and material): | 1022L |
| Black water tank (Litre and material): | 113L |
| Antifouling (Year): | January, 2024 |
| Maximum speed (Kn): | 16 |
| Cruising speed (Kn): | 8.5 - 9 |

Accommodation

| | |
|------------------|--|
| Stove: | Princess 3347 Ceran, electric (2016) |
| Oven: | Princess 3347 (2016) |
| Refrigerator: | Isotherm compact (2018) |
| Freezer: | Waeco cfx 40 (2018) |
| Interior finish: | Teak |
| Washing machine: | Candy |
| TV: | Reflexion LDD 27" (2023) |
| Radio: | Pioneer DEH-X9600BT, speaker, Subwoofer (2017) |
| Single berths: | 2x |
| Double bed: | 1x |
| Cabins: | 2x |
| Toilets: | 1x Sanimarin 31, electric |
| Showers: | 1x |

Machinery

| | |
|---|--|
| Port engine (Brand, type, hp, gearbox): | Cummins, 6TBA 5.9-M1, 250hp, Python-Drive P200-W |
| Engine hours port engine: | 3850 |



| | |
|---|--|
| Star engine (Brand, type, hp, gearbox): | Cummins, 6TBA 5.9-M1, 250hp, Python-Drive P200-W |
| Engine hours starboard engine: | 3850 |
| Drive (Shaft, IPS, Jet): | Shaft |
| Shaft lubrication: | Water |
| Prop (Number of blades, material): | 4x |
| Generator (Brand, type, Kw): | Onan MDKD-P, 230V / 50Hz / 6,5 Kva |
| Generator hours: | +/- 450 |
| Bowthruster (Brand, type, elec/hyd): | Vetus 12512, 8hp |
| Sternthruster (Brand, type, elec/hyd): | Vetus 12512, 8hp |
| Electrical bilge pump: | 2x |
| Manual bilge pump: | 1x |
| Oil change system: | Present (2022) |
| Water pressure pump (Brand, model): | Paragon junior |
| Hot water system: | Seaward S1150 |
| Heating system (brand, model, type): | WebastArTop 5500 Evo Comfort (2018) |
| Trim system: | Bennet |
| Steering system: | SeaStar hydraulic |
| Deckwash: | 1x |

Electrical system

| | |
|--|---------------------|
| House battery (Number of battery,type, total Amp, year): | 2x AGM 200Ah (2023) |
| Start battery (Number of battery,type, total Amp, year): | 1x AGM 200Ah (2023) |
| Bowthruster battery (Number of battery,type, total Amp, year): | 1x AGM 200Ah (2023) |
| Sternthruster battery (Number of battery,type, total Amp, year): | 1x AGM 200Ah (2023) |



| | |
|--|---|
| Generator battery (Number of battery,type, total Amp, year): | AGM 80Ah |
| DC system (V) AC system (V): | 12V / 230V |
| Inverter (V/W/Amp): | Mastervolt Mass 12/2000-230V |
| Battery charger (V/W/Amp): | Mastervolt Chargemaster 12/100-3 (2018) |

Safety system

| | |
|------------------|---------------------------------|
| Radar reflector: | Trilens |
| Life raft: | DSB, 10 persons, Solas B (2022) |

Navigation system

| | |
|-------------------|--|
| Compass: | Danforth |
| Gps plotter: | Furuno GPS-31 |
| Radar screen: | Raymarine A90 Wifi-touch Multifunctioneel display (2017) |
| Radar : | Raymarine digital, Radom, 18" 4kW |
| Depth meter: | Raymarine ST60 + tridata |
| Log: | Raymarine ST60 + tridata |
| Wind meter : | Airmar PB-150 |
| VHF: | Furuno FM-2721 + Raymarine Ray60 (2017) |
| AIS: | Raymarine 650 tranceiver (2017) |
| Autopilot: | Raymarine ST7001 (ACU-400, EV1, new pump 2021) |
| Rudder indicator: | VDO |

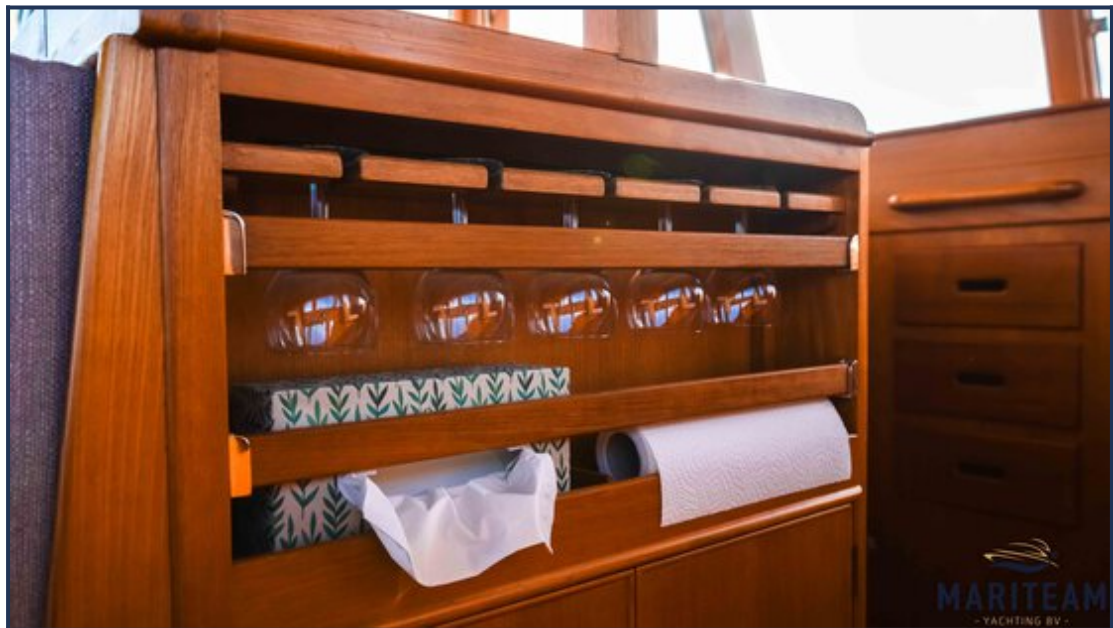
Equipment

| | |
|---------------------|--|
| Anchor: | 1x 27kg with 50 mtr chain, stainless steel |
| Windlass: | Lofrans Tigres 1500W (2019) |
| Gangway: | 1x removable (2018) |
| Tender crane: | Mast + Boom |
| Tender: | Doering Goldbutt (11") with Torqeedo 1003 (2018) |
| Window ventilation: | Sliding and tilting windows |
| Horn: | Fiamm MT-NA |









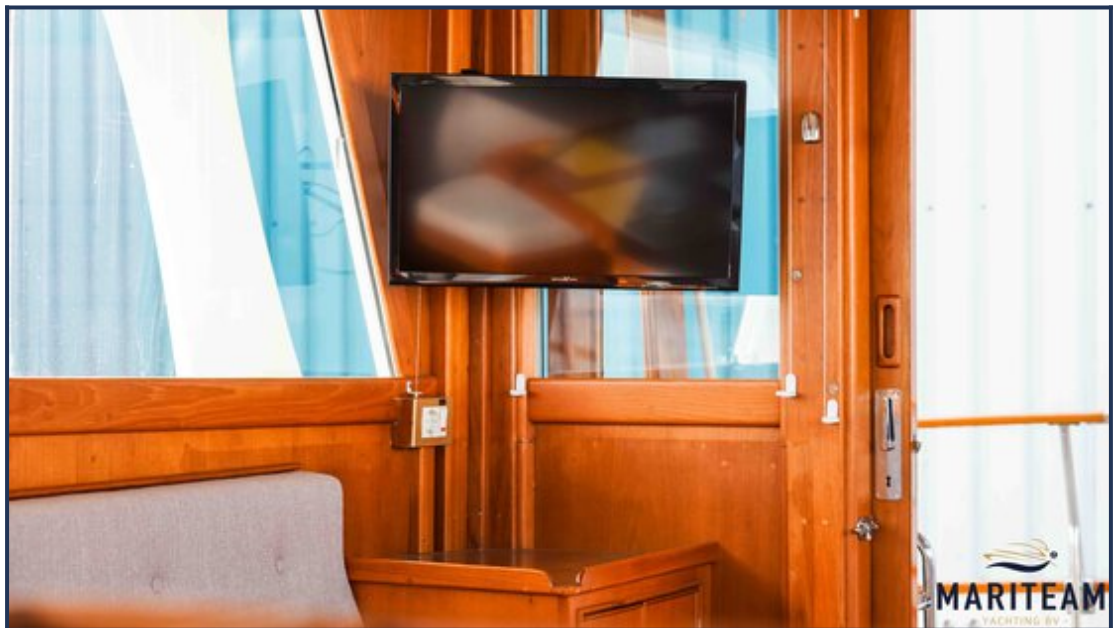




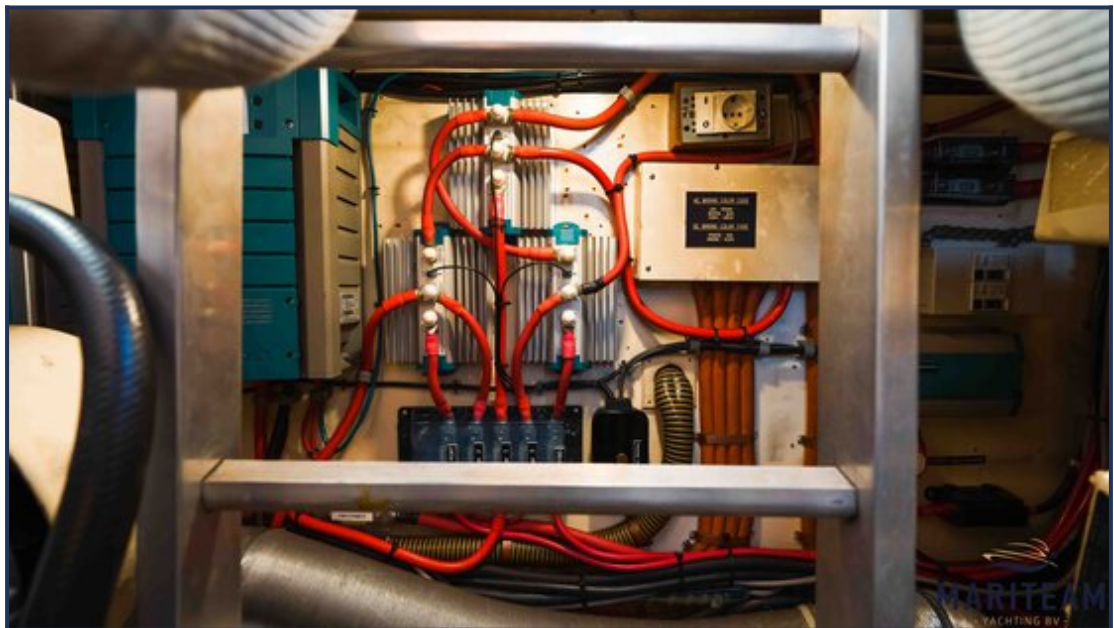


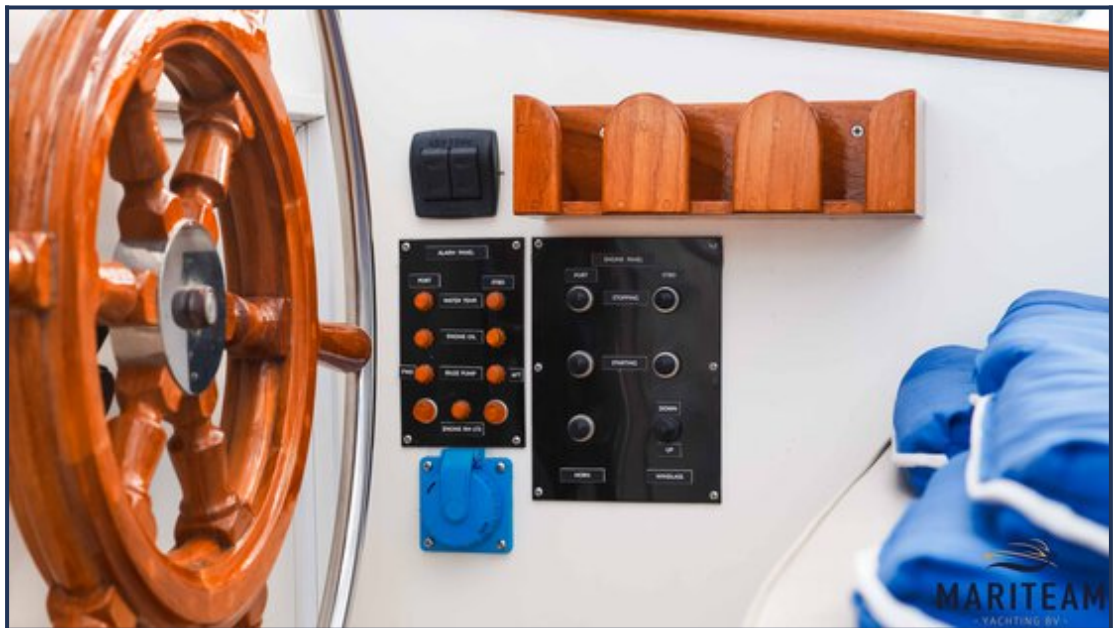


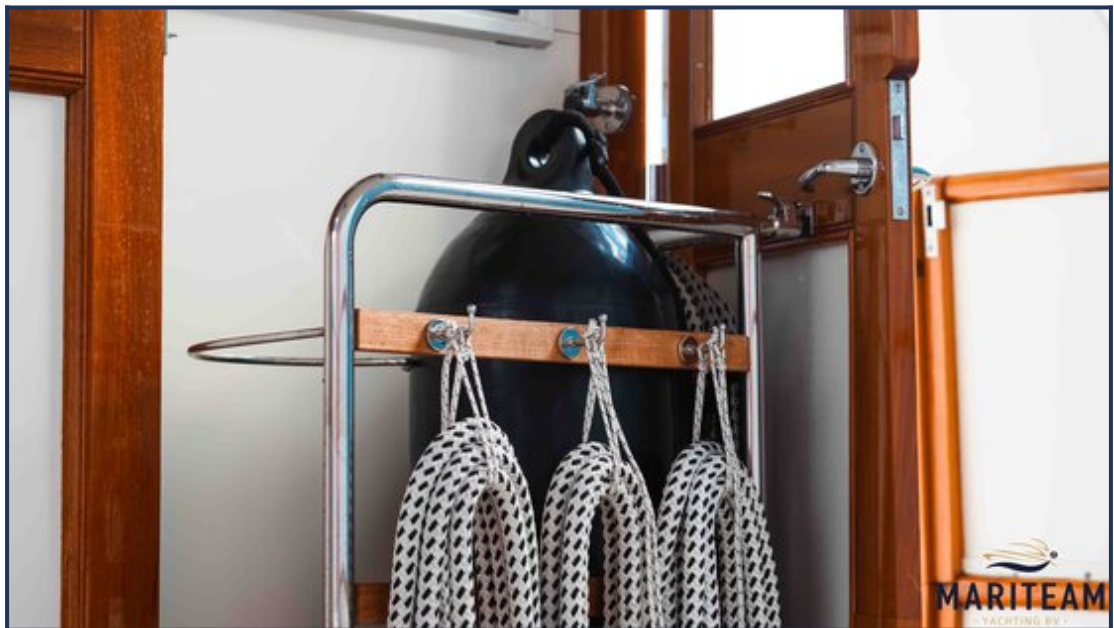


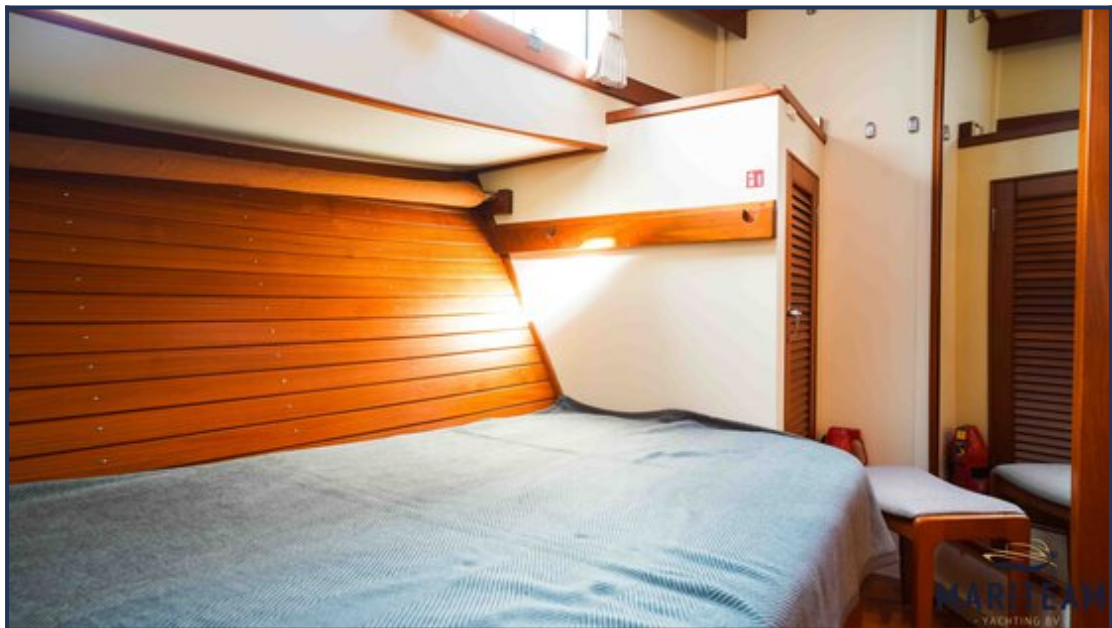


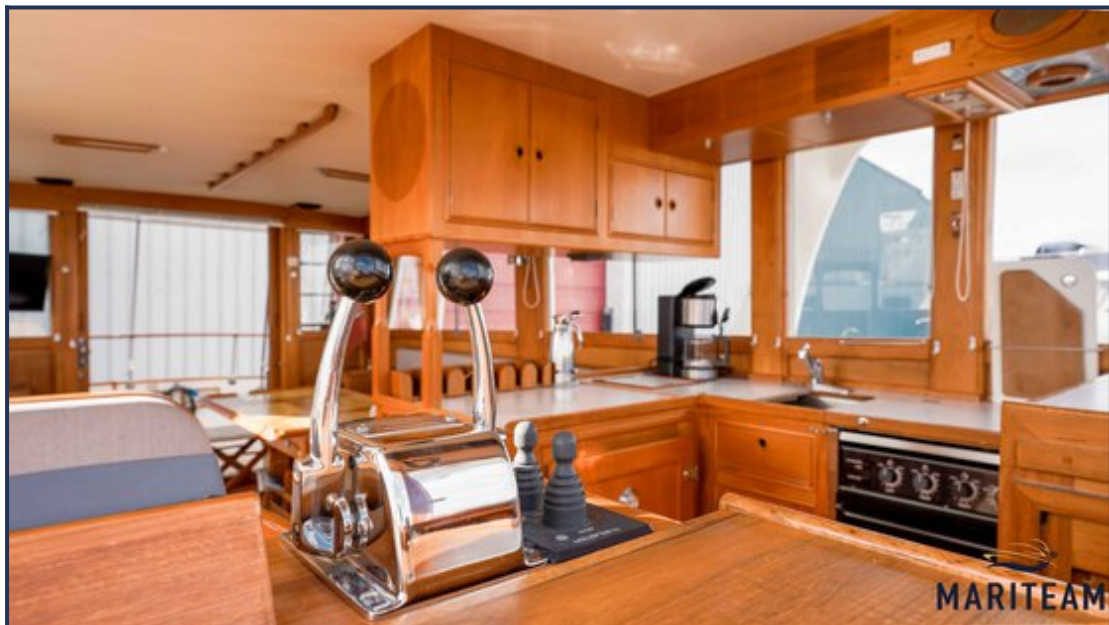




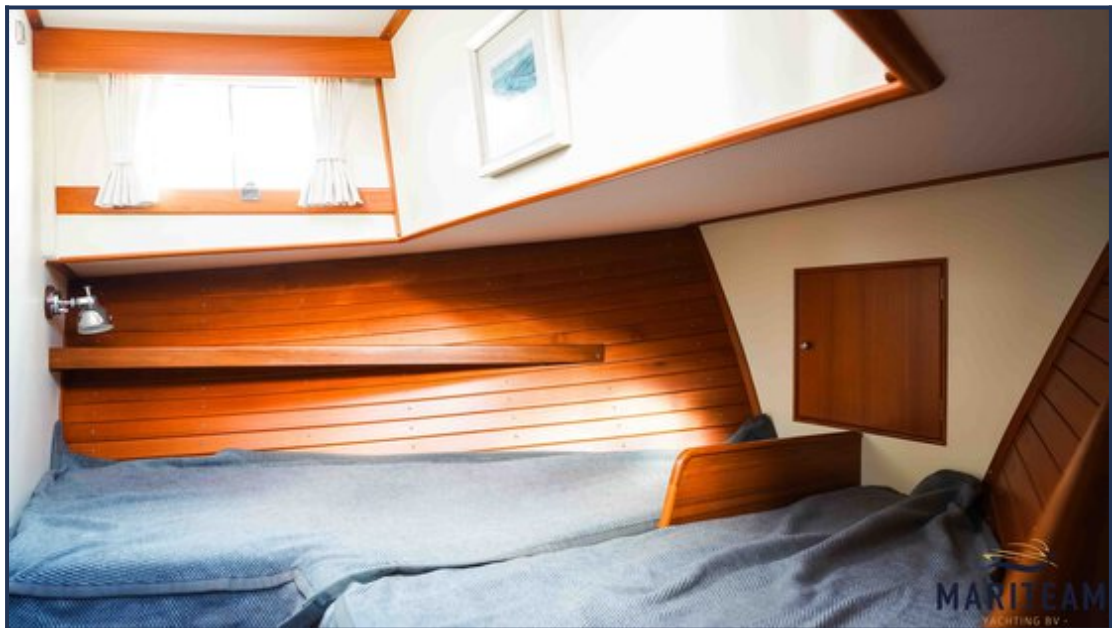






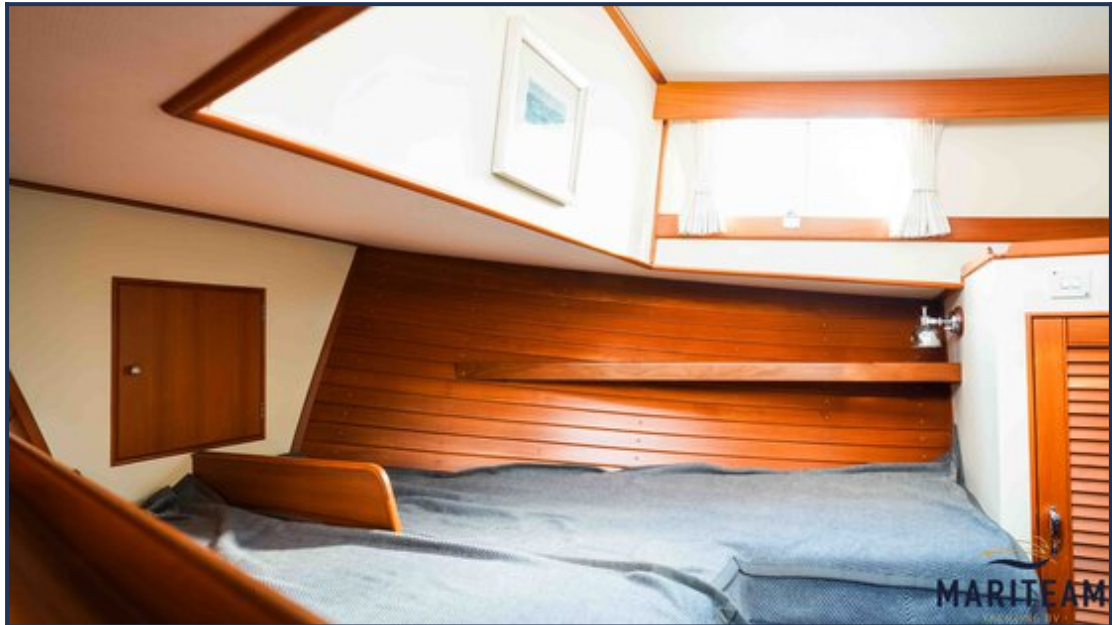






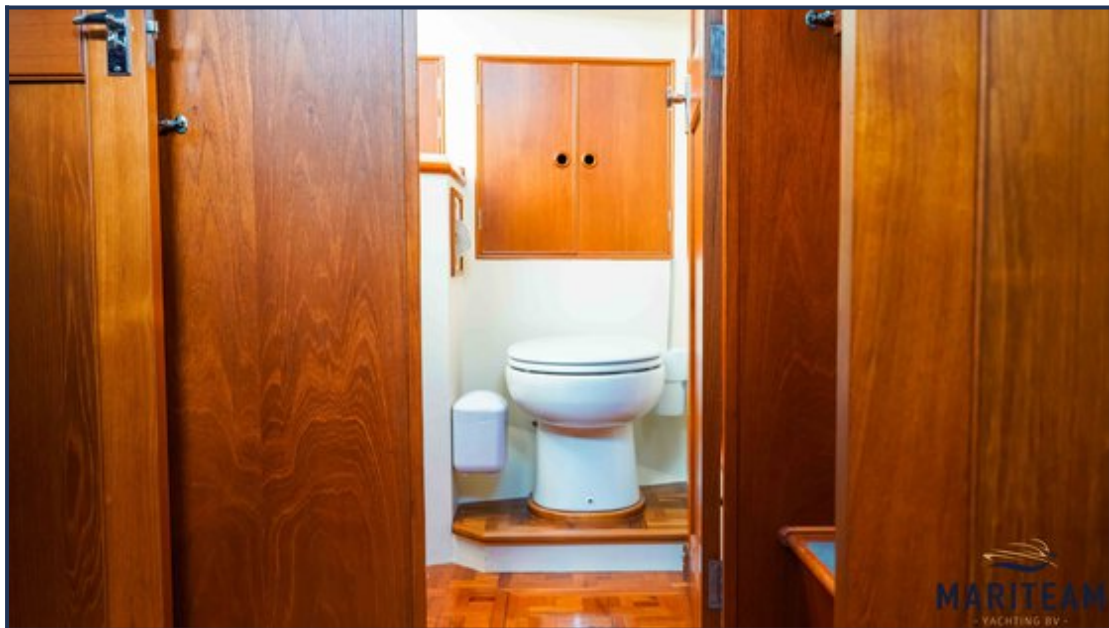


























These particulars are given in good faith as supplied but cannot be guaranteed and cannot be used for contracts.