



Grand Banks 42 Classic 'LEGENDE'

LOA (m):	13.17 m
Beam (m):	4.29 m
Draft (m):	1.27 m
Engines:	2x 210hp Caterpillar
Cabins:	2
Homeport:	Heeg, The Netherlands
Price:	€ 189,000

Craftsmanship, seaworthiness, and classic lines are some of the factors that make the Grand Banks 42 Classic such a sought-after vessel. As often seen with the Grand Banks, this ship has been meticulously maintained and stored indoors every winter. The classic model offers two cabins on either side, thereby creating sufficient privacy and comfort to stay on board for an extended period.

Main specifications

Model:	42 Classic
LOA (m):	13.17 m
Beam (m):	4.29 m
Draft (m):	1.27 m
Year:	1991
Hull Material:	GRP
Cabins:	2
Sleeping places:	5
Number of main engine(s):	2
Power of main engine(s) (hp):	210
Brand of main engine(s):	Caterpillar
Price:	€ 189,000
VAT status:	EU VAT Paid
HIN number:	GNDC1212F191

General

Name :	LEGENDE
Shipyard:	American Marine Signapore Ltd.
Displacement (t):	15.7
Hull material:	GRP
Deck material:	GRP
Superstructure material:	GRP
Deck finish:	Teak
Window material:	Single Safety glas
Fuel tank (Litre and material):	2270 Litre
Freshwater Tank (Liter and material):	1000 Litre

Antifouling (Year):	2023
Maximum speed (Kn):	12
Cruising speed (Kn):	6

Accommodation

Stove:	Siemens Ceran Schott
Microwave:	Siemens Microwelle Plus
Refrigerator:	Marines Air Baysider II
Freezer:	Freezer compartment in fridge
Interior finish:	Teak
Single berths:	1
Double bed:	2
Cabins:	2
Toilets:	2x Elektric 2023
Showers:	2

Machinery

Port engine (Brand, type, hp, gearbox):	Caterpillar 3208TA, 210PK, Twin Disc MG-506-1
Engine hours port engine:	3193
Star engine (Brand, type, hp, gearbox):	Caterpillar 3208TA, 210PK, Twin Disc MG-506-1
Engine hours starboard engine:	3223
Main engines control (Brand and type):	Morse
Drive (Shaft, IPS, Jet):	Propeller shaft
Shaft lubrication:	Waterlubricated
Prop (Number of blades, material):	Replaced in 2022

Generator (Brand, type, Kw):	Onan 6.5Kw
Generator hours:	1023
Bowthruster (Brand, type, elec/hyd):	Elfin Torino
Electrical bilge pump:	2x Rule industries
Water pressure pump (Brand, model):	Paragon junior
Hot water system:	Hoiux BAT80
Heating system (brand, model, type):	Webasto
Trim system:	Eltrim
Steering system:	Mechanical

Electrical system

House battery (Number of battery,type, total Amp, year):	3x AGM 220Ah
Start battery (Number of battery,type, total Amp, year):	1x AGM 220Ah 1x Odyssey 220Ah
Bowthruster battery (Number of battery,type, total Amp, year):	2x Wilco 120Ah
DC system (V) AC system (V):	12V / 220 V
Inverter (V/W/Amp):	Victron Phoenix Compact 12v 2000W

Safety system

Fire extinguisher engine room:	Flamco
--------------------------------	--------

Navigation system

Compass:	Danforth
----------	----------



Gps plotter:	Raytheon Raystar 590
Radar screen:	Raytheon R21X
Radar :	Raytheon R11X
Depth meter:	Clipper
Log:	VDO
Wind meter :	Stowe
VHF:	Raymarine
Autopilot:	Robertson AP200DL
Rudder indicator:	Robertson

Equipment

Anchor:	1x
Windlass:	Lofrans Tigres
Window ventilation:	Sliding and tilting windows
Horn:	Fiamm







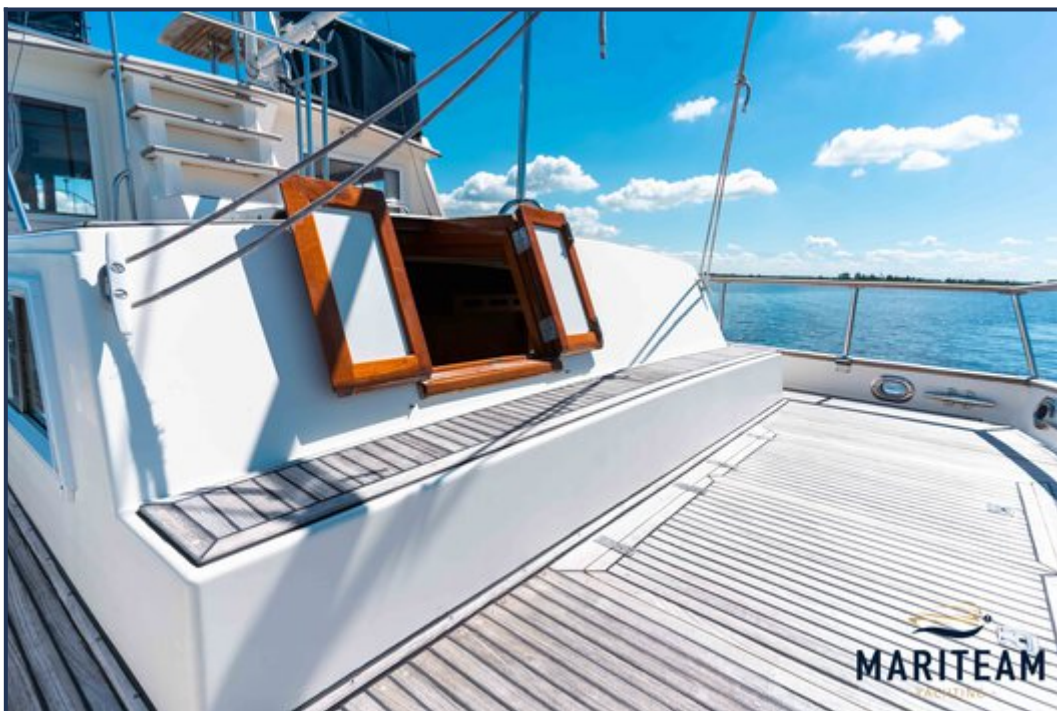


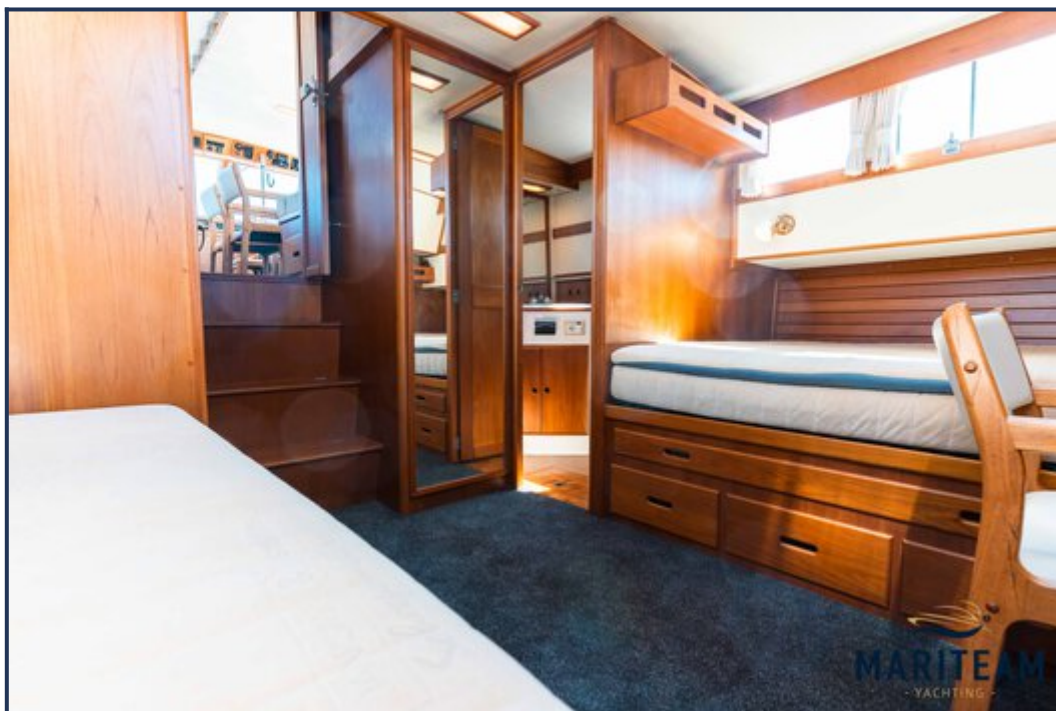


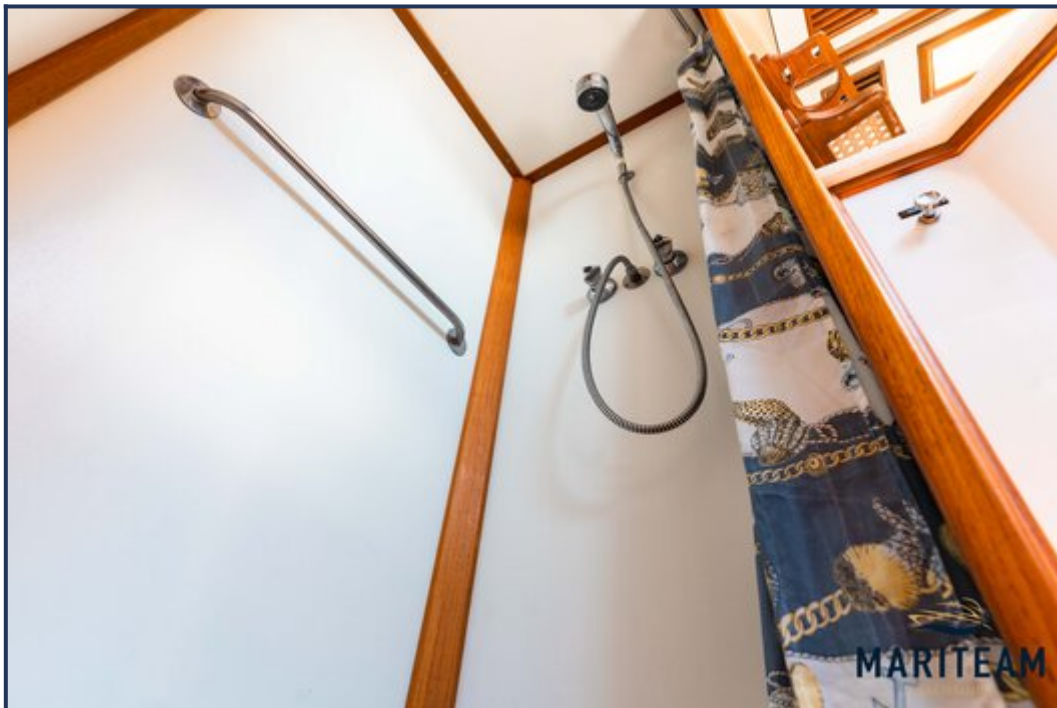


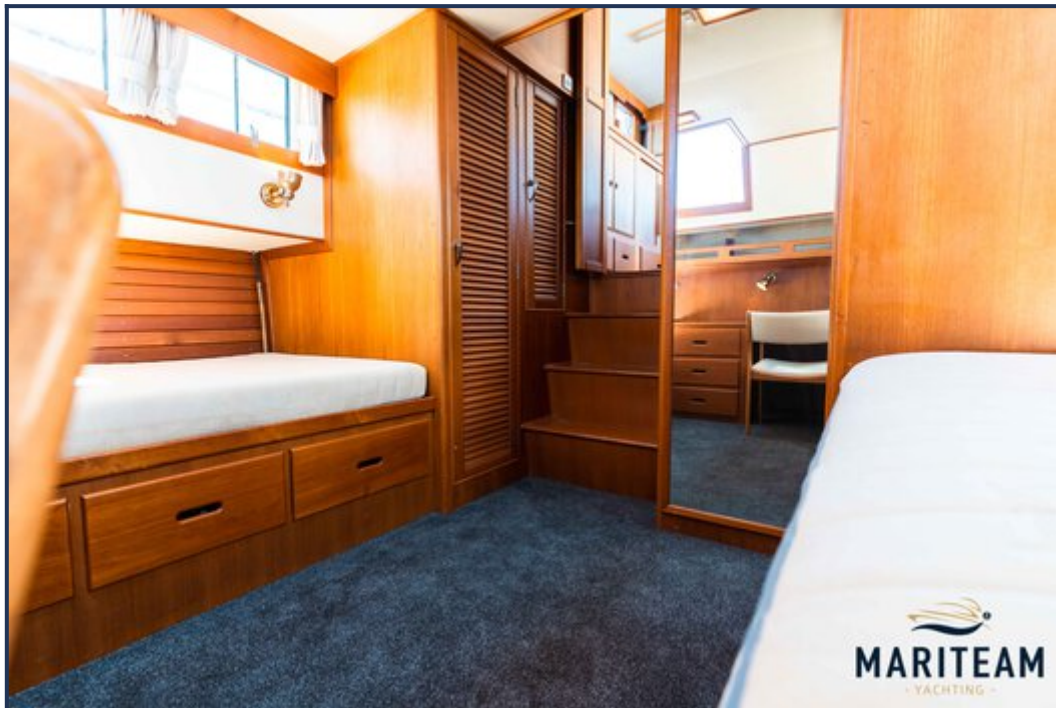






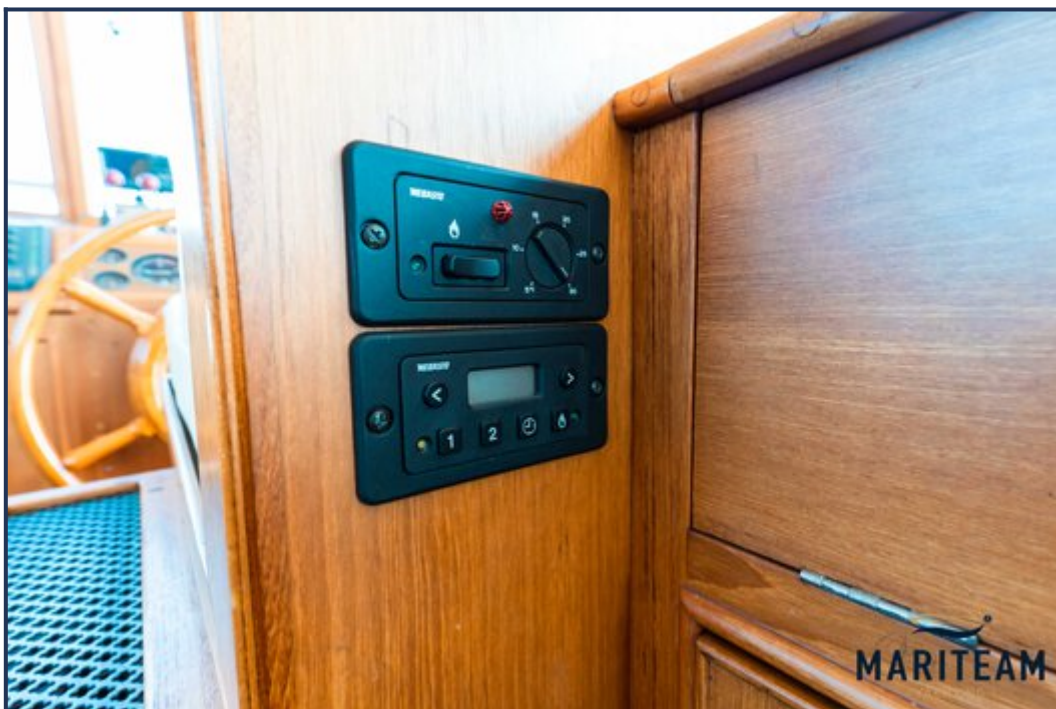




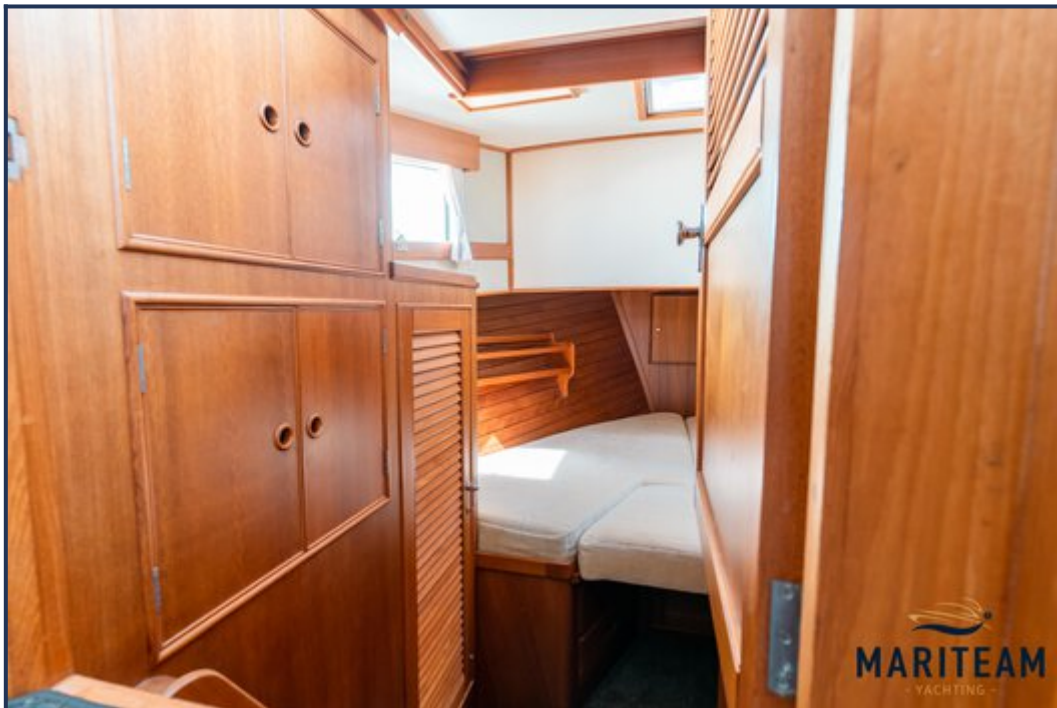


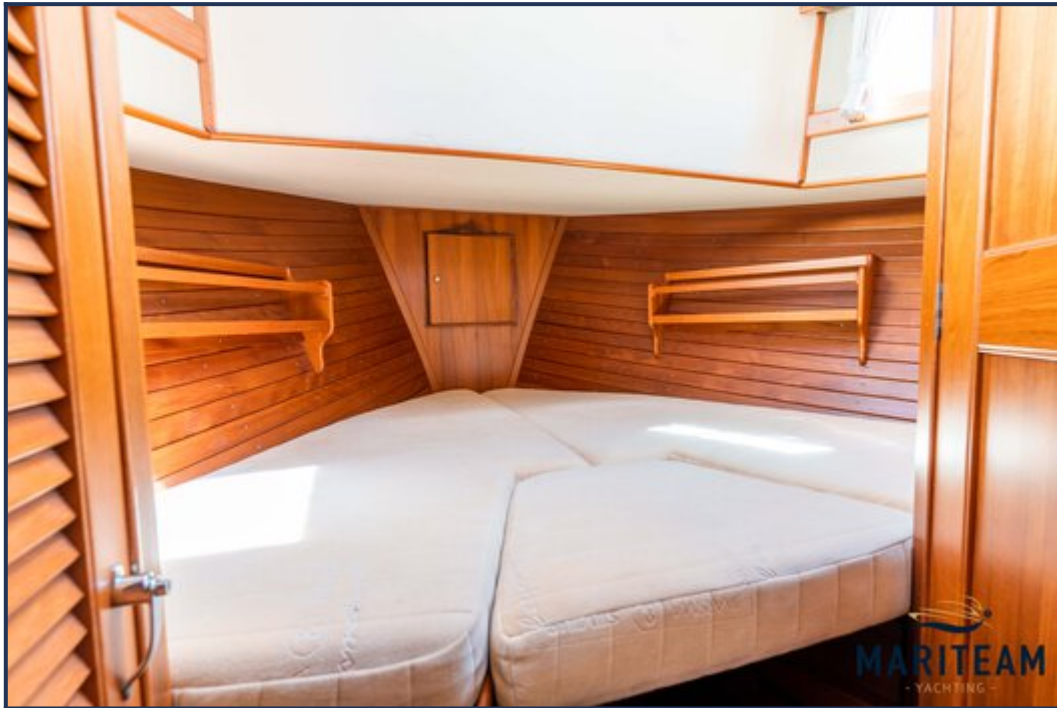




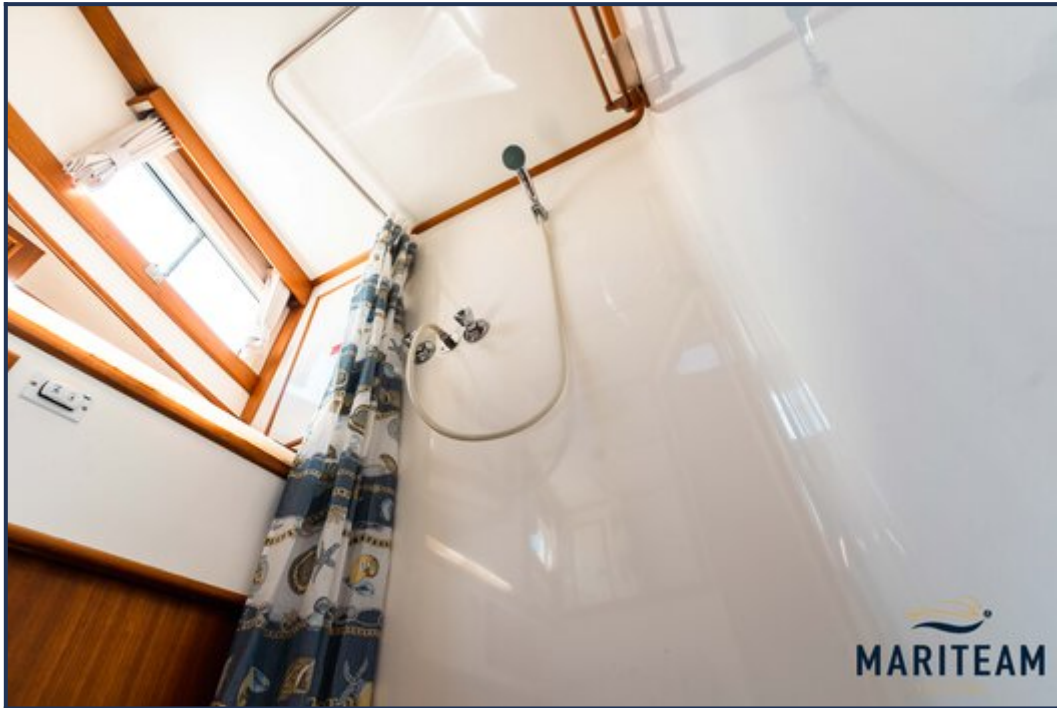












These particulars are given in good faith as supplied but cannot be guaranteed and cannot be used for contracts.