



# MARITEAM

- YACHTING -



**MARITEAM**  
- YACHTING -

## Sabreline 47 'RAZENDE BOL'

|            |                      |
|------------|----------------------|
| LOA (m):   | 14.48 m              |
| Beam (m):  | 4.57 m               |
| Draft (m): | 1.35 m               |
| Engines:   | 2x 426hp Caterpillar |
| Cabins:    | 2                    |
| Homeport:  | Sales office, Heeg   |
| Price:     | € (not set)          |

Discover the elegance and performance of the Sabreline 47, featuring a galley-down layout and two spacious cabins.

**MARITEAM YACHTING**

De Draei 29, 8621 CZ Heeg 📍 The Netherlands 📞 Phone +31 (0) 582 889254  
[info@mariteamyachting.nl](mailto:info@mariteamyachting.nl) 🌐 [www.mariteamyachting.nl](http://www.mariteamyachting.nl)

## Main specifications

|                               |                 |
|-------------------------------|-----------------|
| Model:                        | 47              |
| LOA (m):                      | 14.48 m         |
| Beam (m):                     | 4.57 m          |
| Draft (m):                    | 1.35 m          |
| Year:                         | 1999            |
| Hull Material:                | GRP             |
| Cabins:                       | 2               |
| Sleeping places:              | 6               |
| Number of main engine(s):     | 2               |
| Power of main engine(s) (hp): | 426             |
| Brand of main engine(s):      | Caterpillar     |
| Price:                        | € (not set)     |
| VAT status:                   | EU Paid         |
| HIN number:                   | US-HASL7020H900 |

## General

|  |                        |
|--|------------------------|
| Name :                                 | Razende Bol            |
| Shipyard:                              | Sabre Yachts USA       |
| CE-category:                           | A                      |
| Cruising speed (Kn):                   | 16                     |
| Maximum speed (Kn):                    | 25                     |
| Air draft (m):                         | 4.20 top of windshield |
| Displacement (t):                      | 19.5                   |
| Fuel tank (Litre and material):        | 2400L, aluminium       |
| Freshwater Tank (Liter and material):  | 1200L, aluminium       |
| Black water tank (Litre and material): | 250L, GRP              |

|                                       |                |
|---------------------------------------|----------------|
| Grey water tank (Litre and material): | 250L, GRP      |
| Hull material:                        | GRP            |
| Superstructure material:              | GRP            |
| Deck material:                        | GRP            |
| Deck finish:                          | Teak           |
| Interior finish:                      | Cherry         |
| Window material:                      | Tempered glass |

## Accommodation

|                                      |                             |
|--------------------------------------|-----------------------------|
| Cabins:                              | 2x                          |
| Double bed:                          | 2x                          |
| Single berths:                       | 2x                          |
| Showers:                             | 2x                          |
| Toilets:                             | 2x electric                 |
| Heating system (brand, model, type): | Eberspächer D5 (2020)       |
| Stove:                               | Princess, 3 burner electric |
| Microwave:                           | Sharp                       |
| Refrigerator:                        | 1x Sub Zero                 |
| Freezer:                             | 1x Sub Zero                 |

## Machinery

|   |  |
|---|--|
| Port engine (Brand, type, hp, gearbox): | Caterpillar, 3126, 426hp, hydraulic ZF |
| Engine hours port engine:               | 1867                                   |
| Star engine (Brand, type, hp, gearbox): | Caterpillar, 3126, 426hp, hydraulic ZF |
| Engine hours starboard engine:          | 1867                                   |

|                                      |                             |
|--------------------------------------|-----------------------------|
| Steering system:                     | Hydraulic                   |
| Drive (Shaft, IPS, Jet):             | Drive shaft                 |
| Shaft lubrication:                   | Water lubricated            |
| Prop (Number of blades, material):   | 2x 5 blade, stainless steel |
| Generator (Brand, type, Kw):         | Northern Lights, 12Kw       |
| Generator hours:                     | 166                         |
| Bowthruster (Brand, type, elec/hyd): | Vetus 12hp (2013)           |
| Hot water system:                    | Raritan boiler, 75L         |
| Trim system:                         | present                     |

## Electrical system

|  |   |
|--|---|
| DC system (V) AC system (V):                                   | 12V / 220V                                      |
| Battery charger (V/W/Amp):                                     | Mastervolt Chargemaster 12/35/3 (2024)          |
| Inverter (V/W/Amp):  | Mastervolt Mastercombi Ultra 12/3000/150 (2016) |
| House battery (Number of battery,type, total Amp, year):       | 6x 200Ah Mastervolt Gel                         |
| Start battery (Number of battery,type, total Amp, year):       | 2x  |
| Generator battery (Number of battery,type, total Amp, year):   | 1x 70Ah ALM (2018)                              |
| Bowthruster battery (Number of battery,type, total Amp, year): | 2x 230Ah ALM                                    |

## Safety system

|                        |                 |
|------------------------|-----------------|
| Electrical bilge pump: | Rule Industries |
| Manual bilge pump:     | present         |
| Radar reflector:       | present         |

|                                |          |
|--------------------------------|----------|
| Fire extinguisher engine room: | present  |
| Horn:                          | Electric |

## Navigation system

|                   |  |
|-------------------|--|
| Compass:          | Simrad   |
| Gps plotter:      | 2x Simrad NSS12 Evo                            |
| Radar :           | B&G Broadband 4G (2020)                        |
| Autopilot:        | Simrad AC42 & AP44 controller & remote control |
| Rudder indicator: | Simrad IS42                                    |
| Log:              | Simrad NSS12 Evo                               |
| Depth meter:      | Airmar Transducer                              |
| Wind meter :      | Simrad IS42                                    |
| VHF:              | Simrad R35 + Simrad HH36 handheld              |
| AIS:              | NAIS 400                                       |

## Equipment

|               |               |
|---------------|---------------|
| Tender crane: | Mast and boom |
| Anchor:       | Bruce         |
| Windlass:     | Mur, electric |
| Deckwash:     | 1x            |
| Deck shower:  | 1x hot/cold   |



























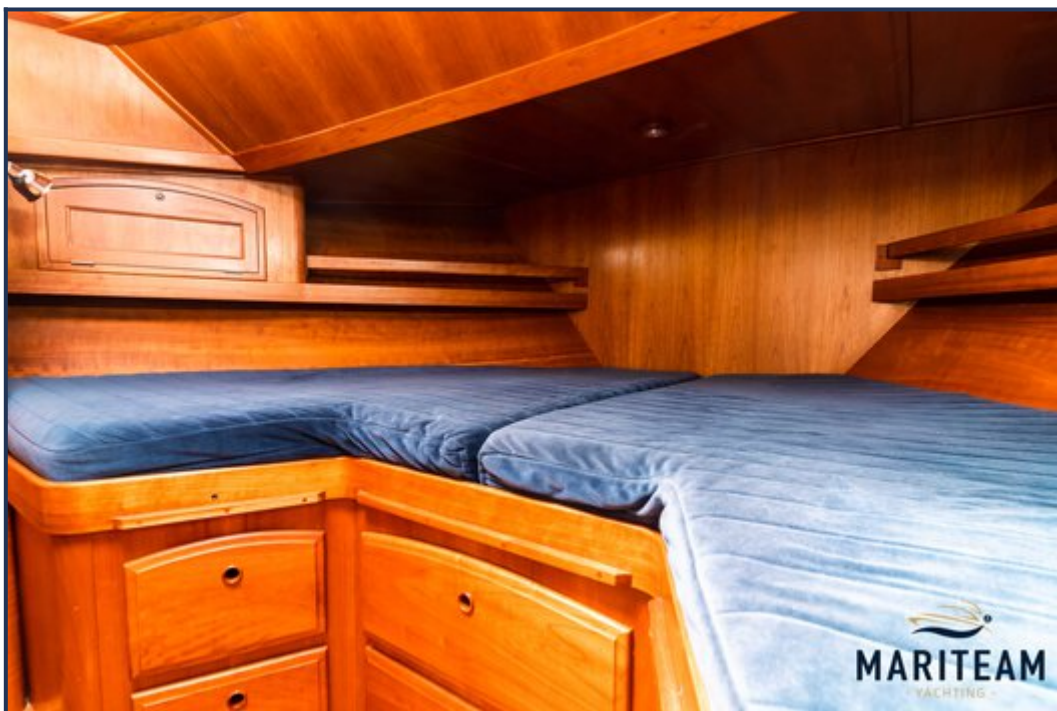




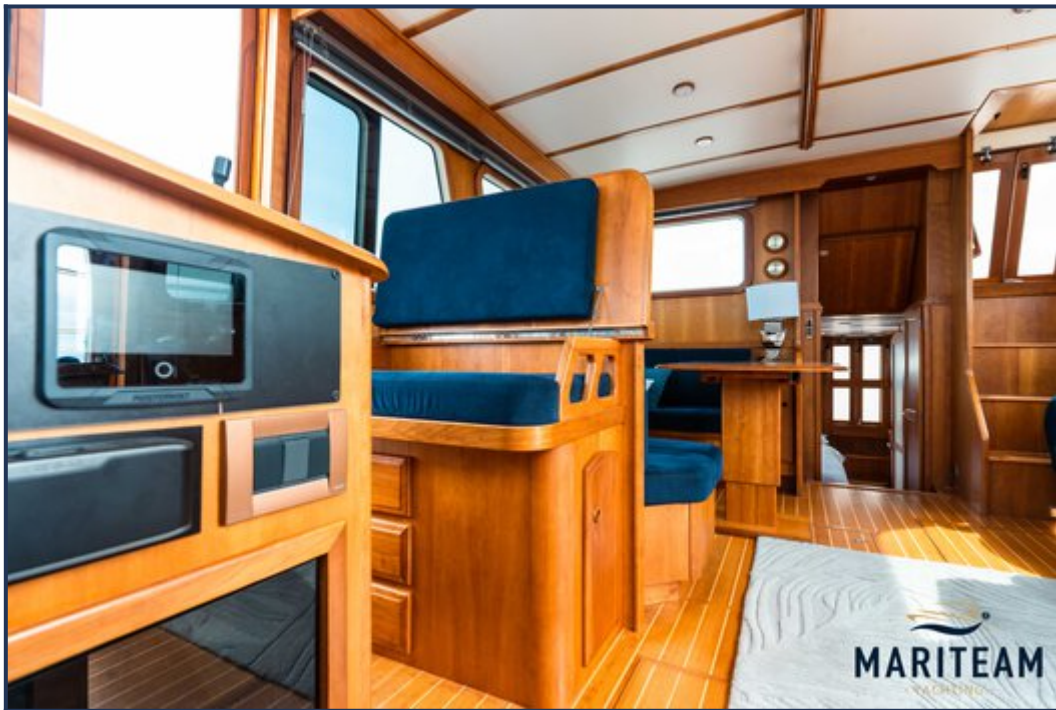
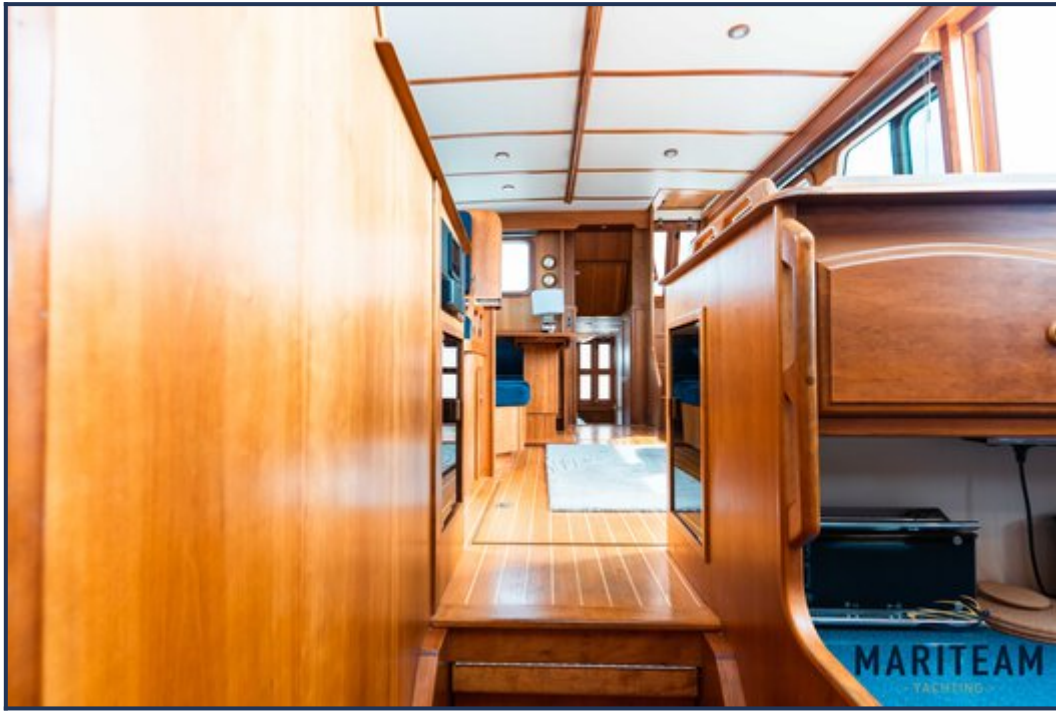


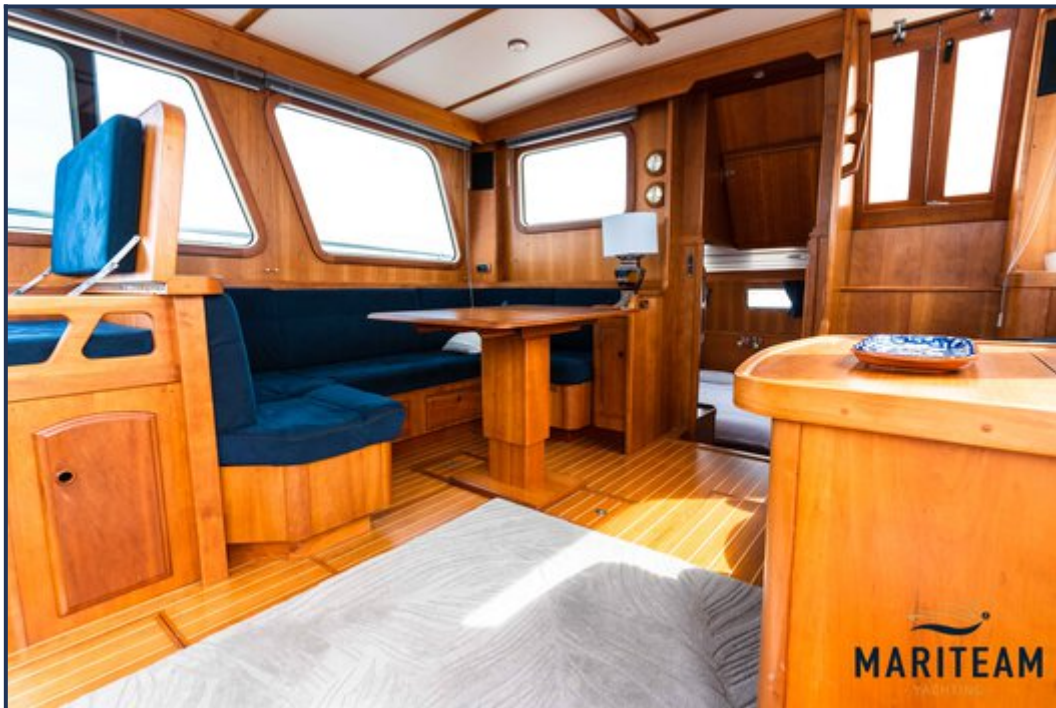


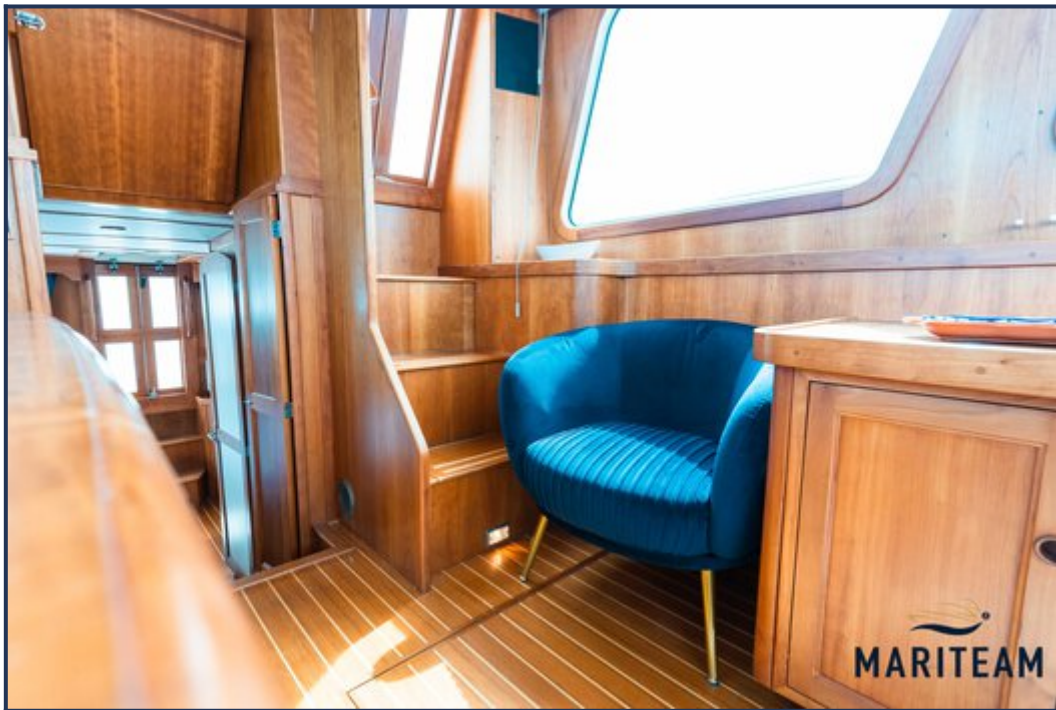


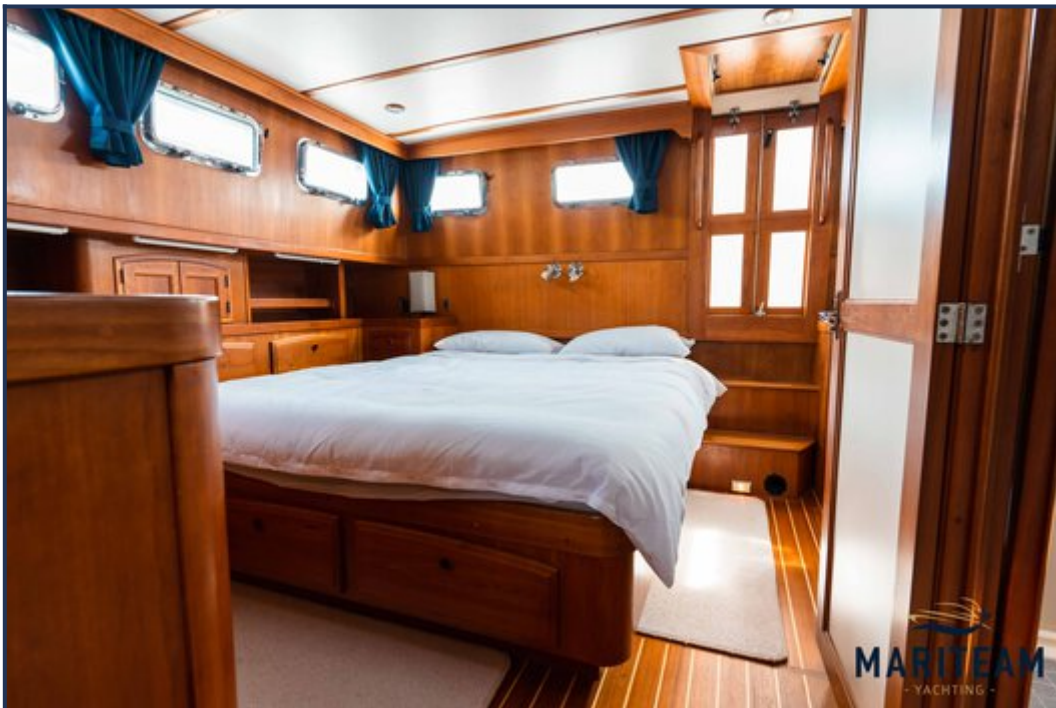


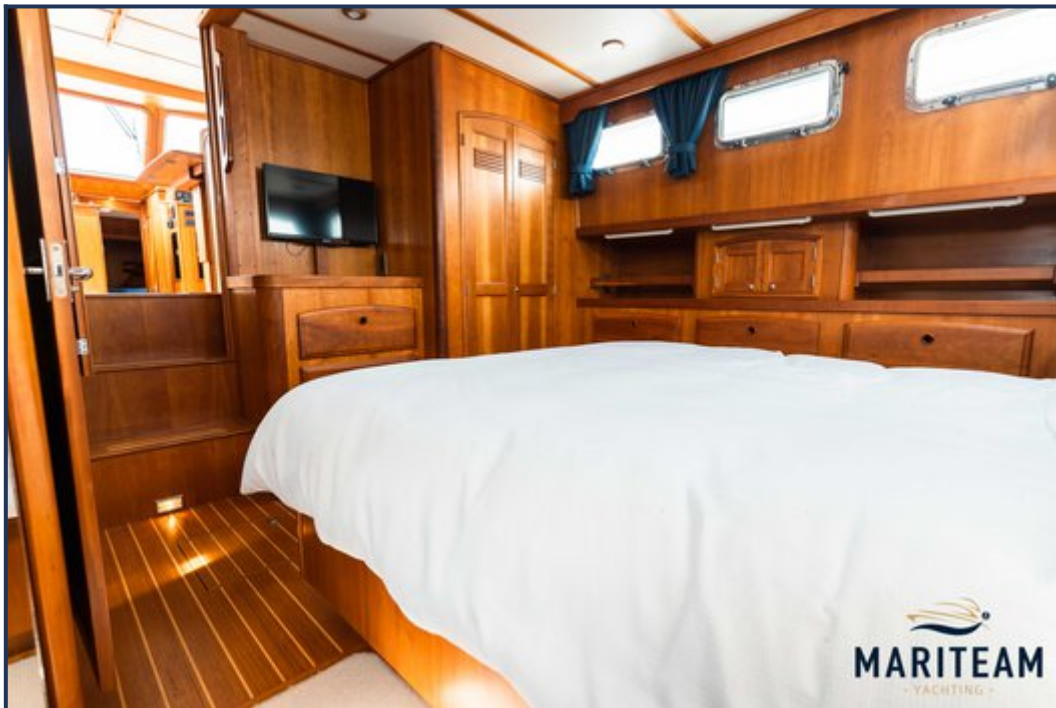


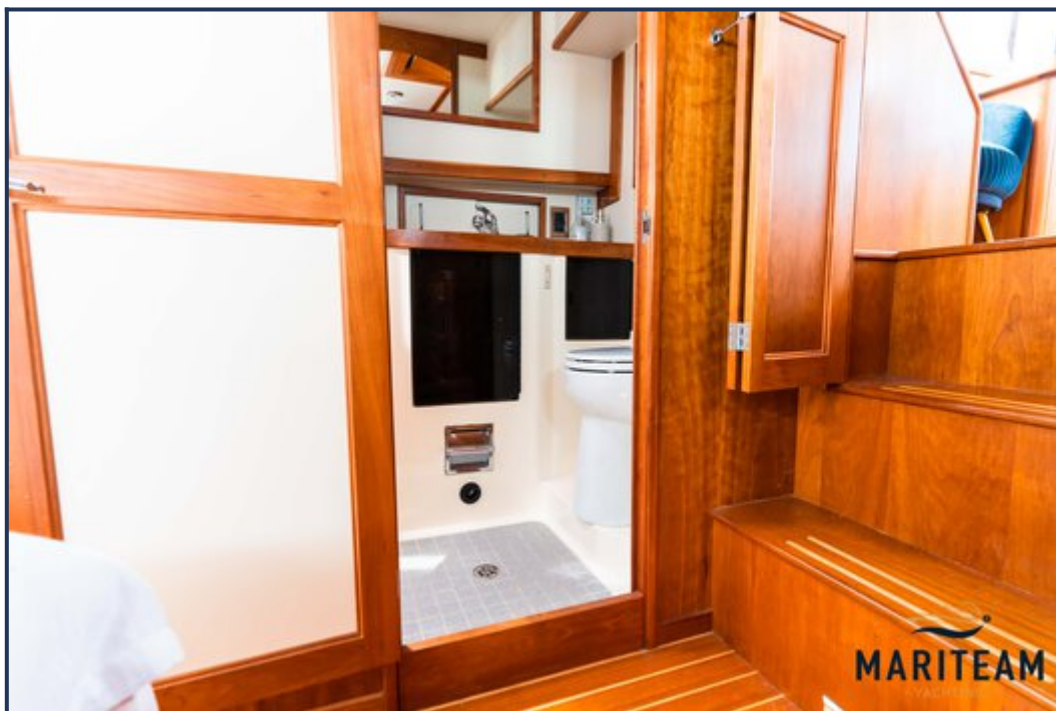


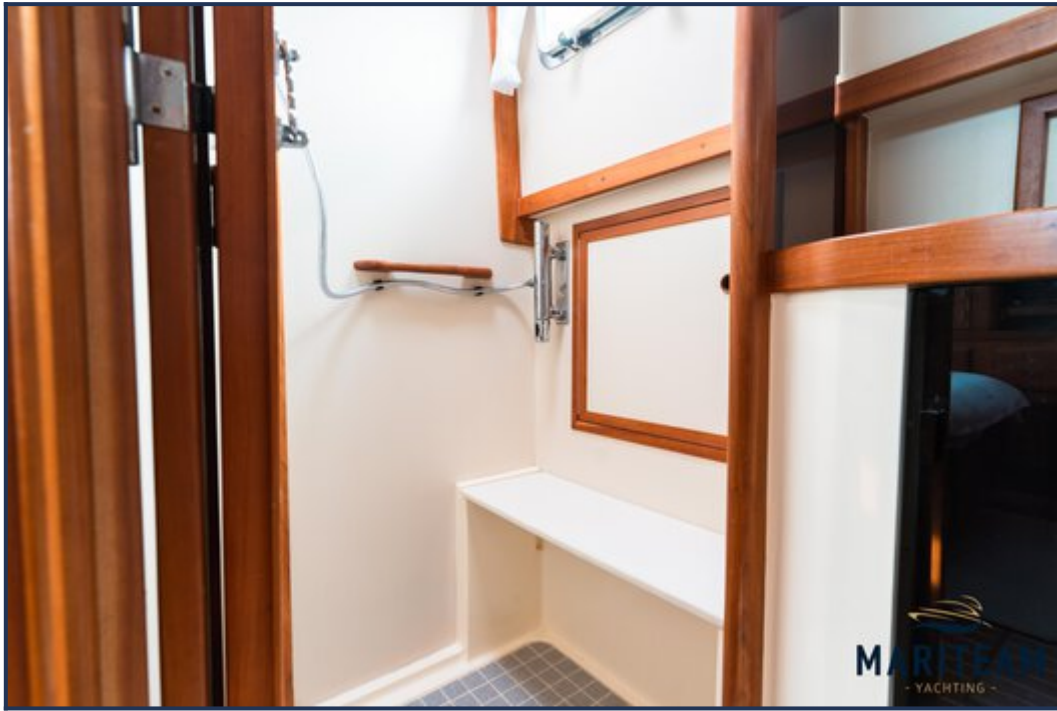






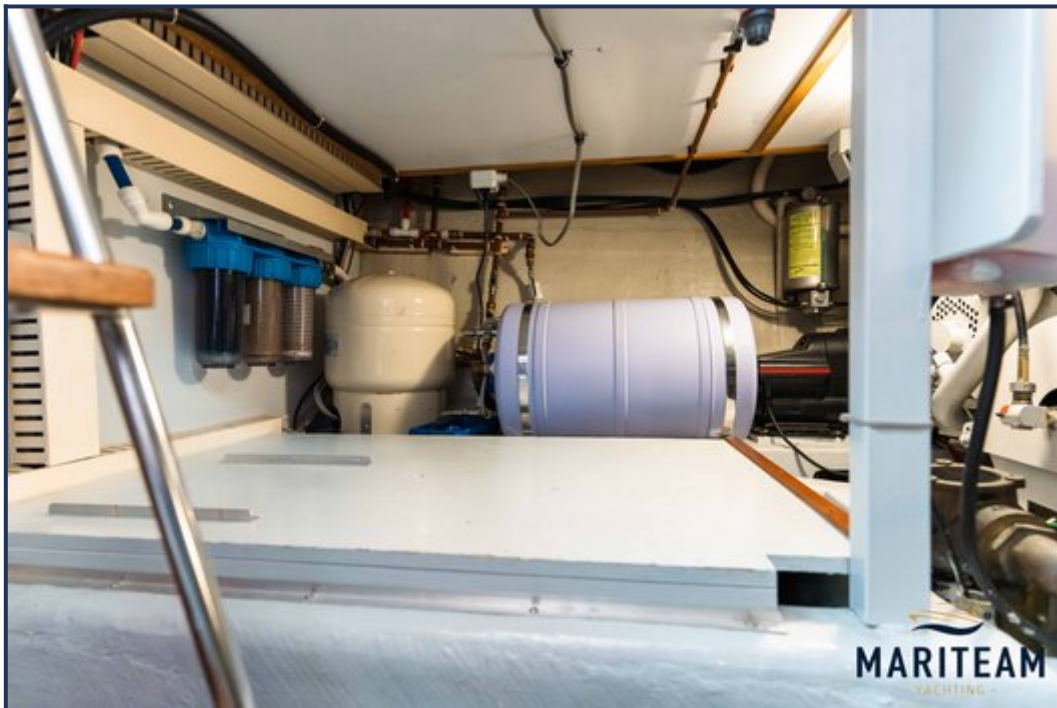
















*These particulars are given in good faith as supplied but cannot be guaranteed and cannot be used for contracts.*