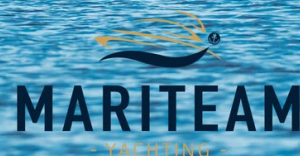




MARITEAM

- YACHTING -



Doggersbank 502A 'Zeebonk'

LOA (m):	13.50 m
Beam (m):	4.25 m
Draft (m):	1.3 m
Engines:	2x 65hp Vetus
Cabins:	2
Homeport:	Sales office, Heeg
Price:	€ 119,000

Step aboard the cozy and classically lined Doggersbank named 'Zeebonk'. Designed by Dick Boon (Vripack Yachting) and built at the Porsius shipyard, this Doggersbank offers comfortable accommodation for four people, divided over two cabins.

MARITEAM YACHTING

Ceresweg 20-B, 8938 BG Leeuwarden 📍 The Netherlands 📞 Phone +31 (0) 582 889254
info@mariteamyachting.nl 📧 www.mariteamyachting.nl

Main specifications

Model:	502A
LOA (m):	13.50 m
Beam (m):	4.25 m
Draft (m):	1.3 m
Year:	1973
Hull Material:	Steel
Cabins:	2
Sleeping places:	4
Number of main engine(s):	2
Power of main engine(s) (hp):	65
Brand of main engine(s):	Vetus
Price:	€ 119,000
VAT status:	exempted of VAT

General

Name :	Zeebonk
Shipyard:	Porsius
Air draft (m):	3.45
Displacement (t):	16
Hull material:	Steel
Deck material:	Steel
Superstructure material:	Steel
Deck finish:	Teak
Window material:	Dubble glas
Antifouling (Year):	2024
Cruising speed (Kn):	3

Accommodation

Stove:	Schott ceran
Refrigerator:	Dometic in kitchen and salon
Freezer:	1x compartment
Interior finish:	Teak
Single berths:	2x
Double bed:	2x
Cabins:	2x
Toilets:	1x electric, 1x vacuüm
Showers:	2x

Machinery

Port engine (Brand, type, hp, gearbox):	Vetus, VH465-A, 65hp
Engine hours port engine:	7570
Star engine (Brand, type, hp, gearbox):	Vetus, VH465-A, 65hp
Engine hours starboard engine:	6279
Main engines control (Brand and type):	Morse single lever
Drive (Shaft, IPS, Jet):	Drive shaft
Generator (Brand, type, Kw):	Fisher panda 5000i Neo
Bowthruster (Brand, type, elec/hyd):	present
Electrical bilge pump:	1x
Water pressure pump (Brand, model):	Jabsco
Hot water system:	Boiler
Heating system (brand, model, type):	Eberspacher airtronic D2

Electrical system

House battery (Number of battery,type, total Amp, year):	4x AGM MB12-220
Start battery (Number of battery,type, total Amp, year):	2x optima 12V
DC system (V) AC system (V):	12 V / 220 V
Inverter (V/W/Amp):	Victron Energy quattro 29/3000/70
Battery charger (V/W/Amp):	Victron Energy Quattro 24/3000/70

Navigation system

Gps plotter:	Garmin GPSmap 922
Radar :	Ratheon
Depth meter:	1x Raymarine ST60+ Tridata
Log:	Raymarine st60+ tridata
VHF:	Sailtron
Autopilot:	Raymarine st60+ tridata
Rudder indicator:	VDO

Equipment

Anchor:	1x WADE anchor
Tender crane:	Davids
Deck shower:	1x hot & cold



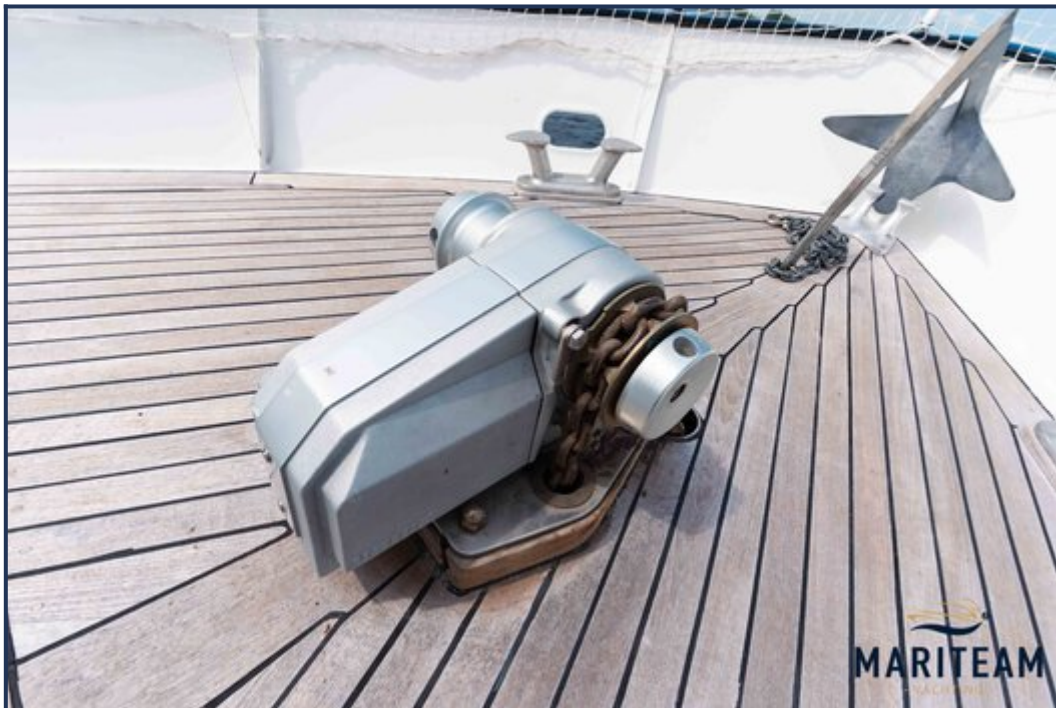


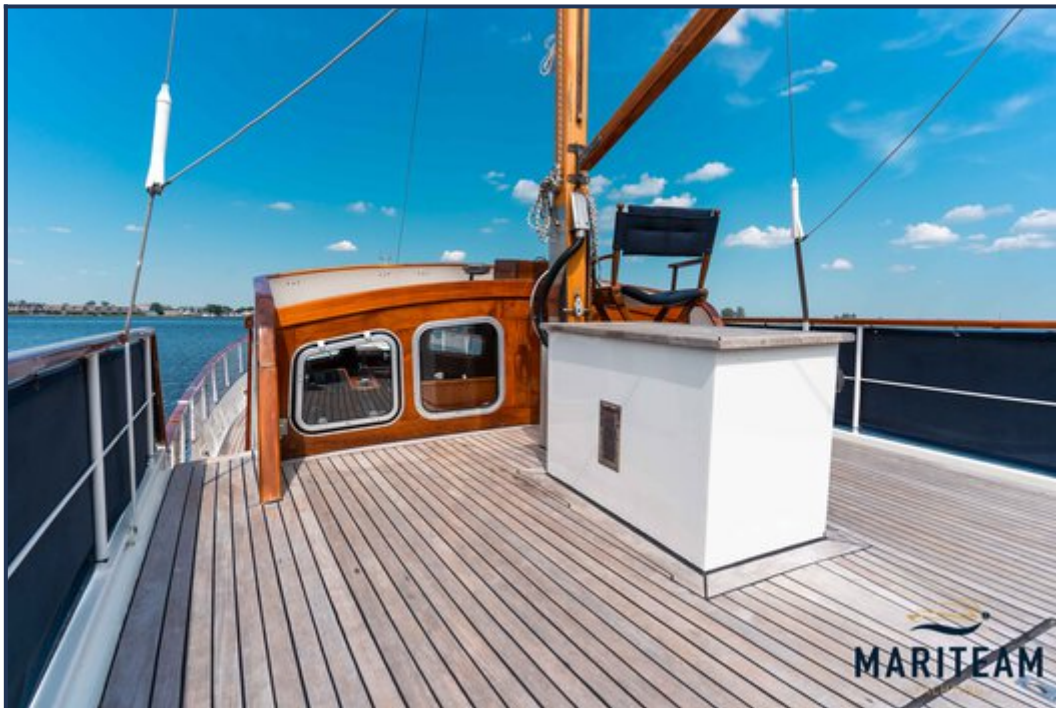






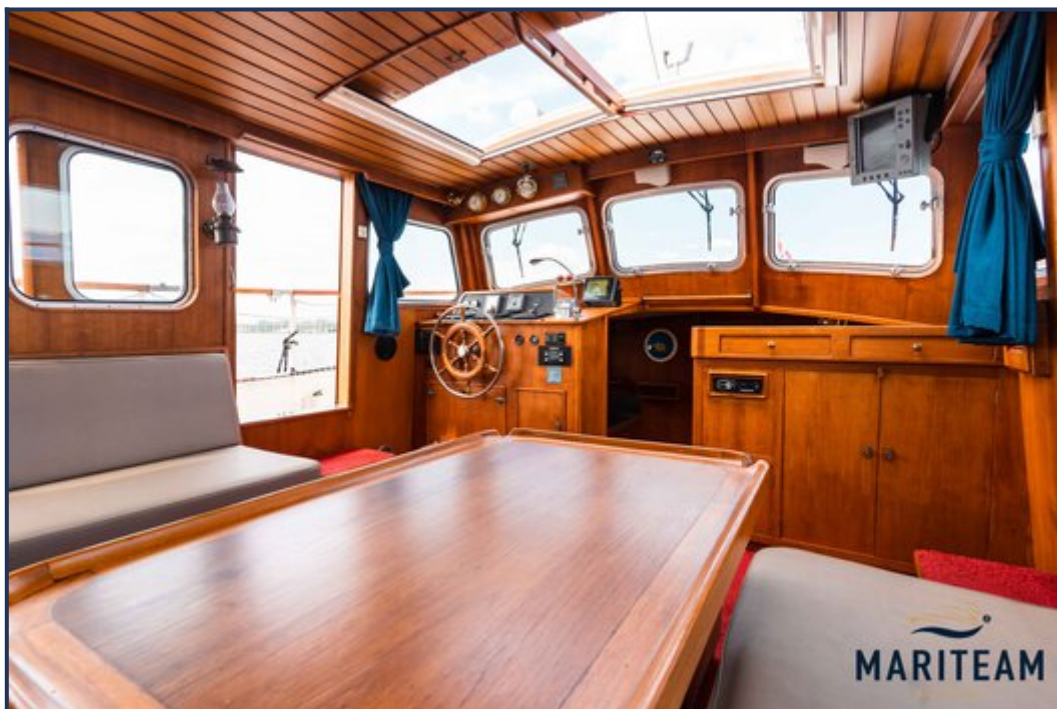


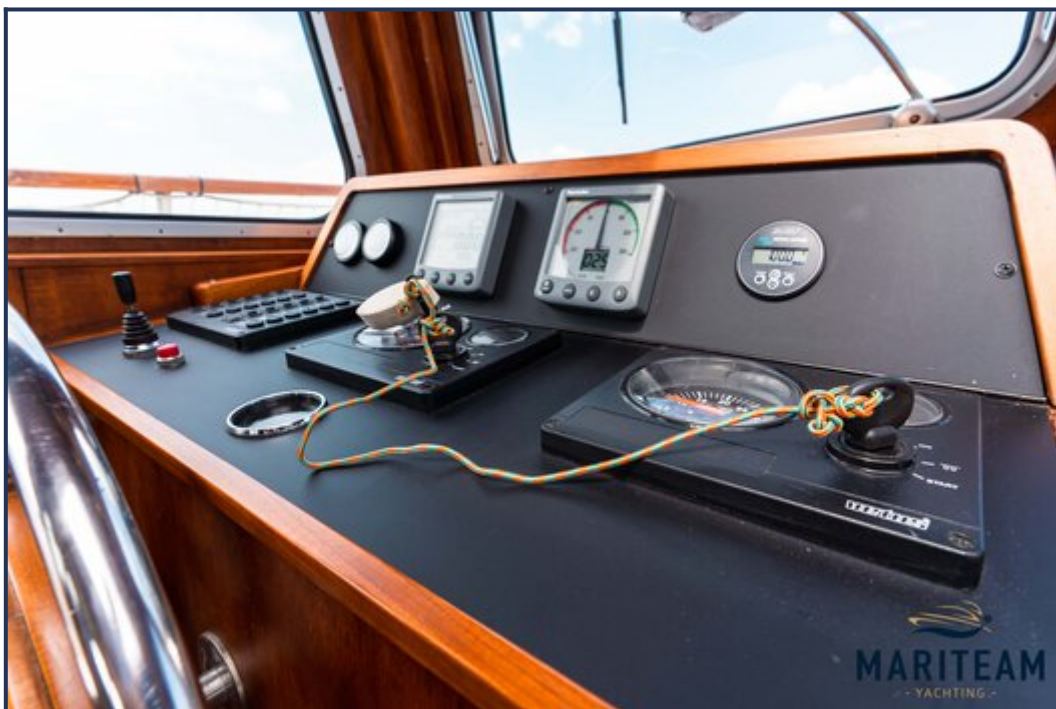
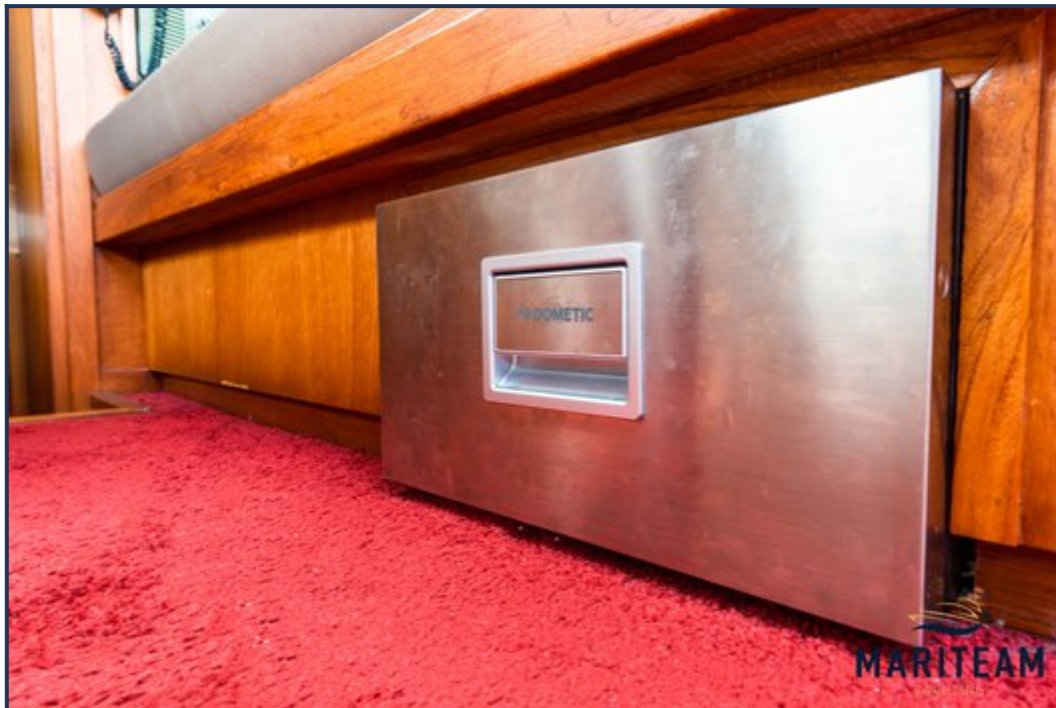


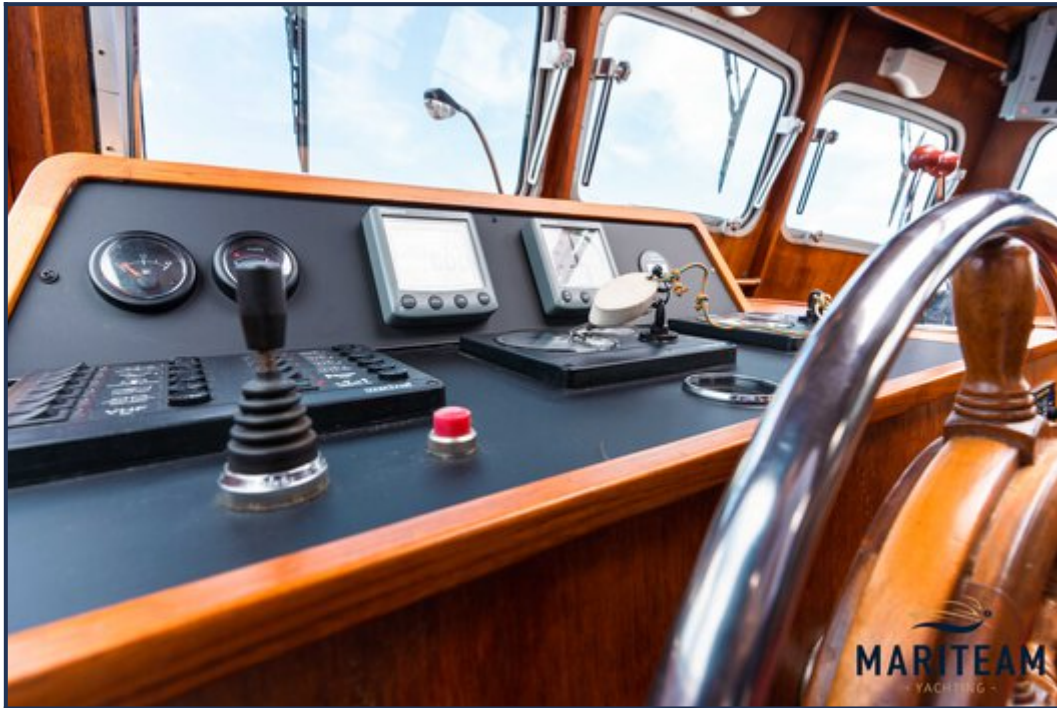


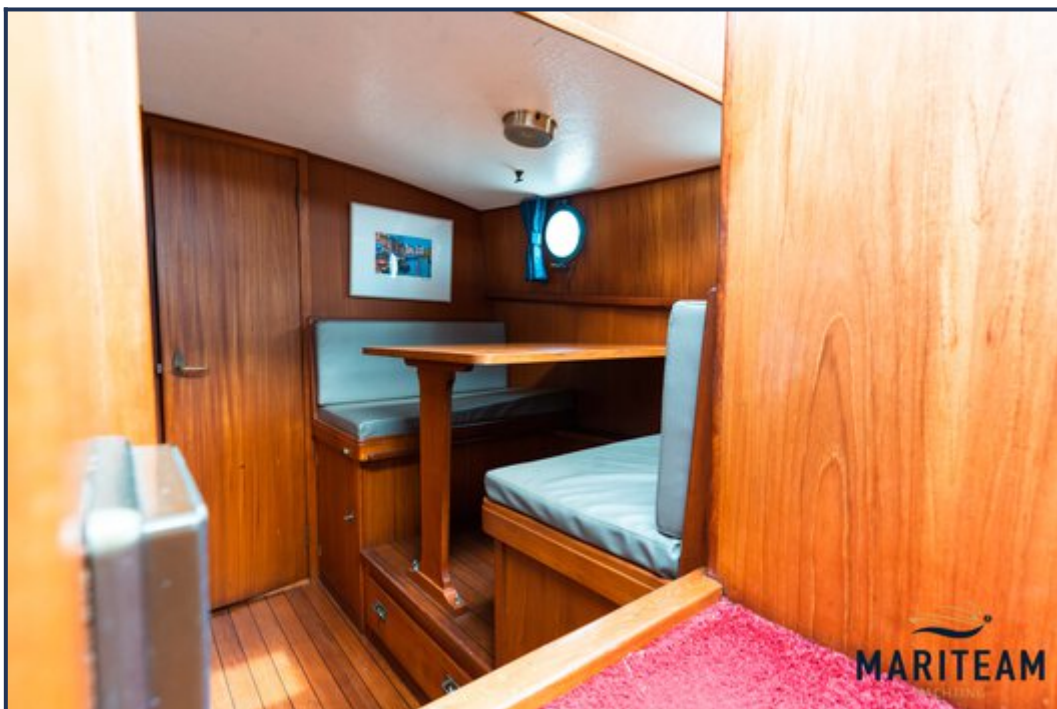




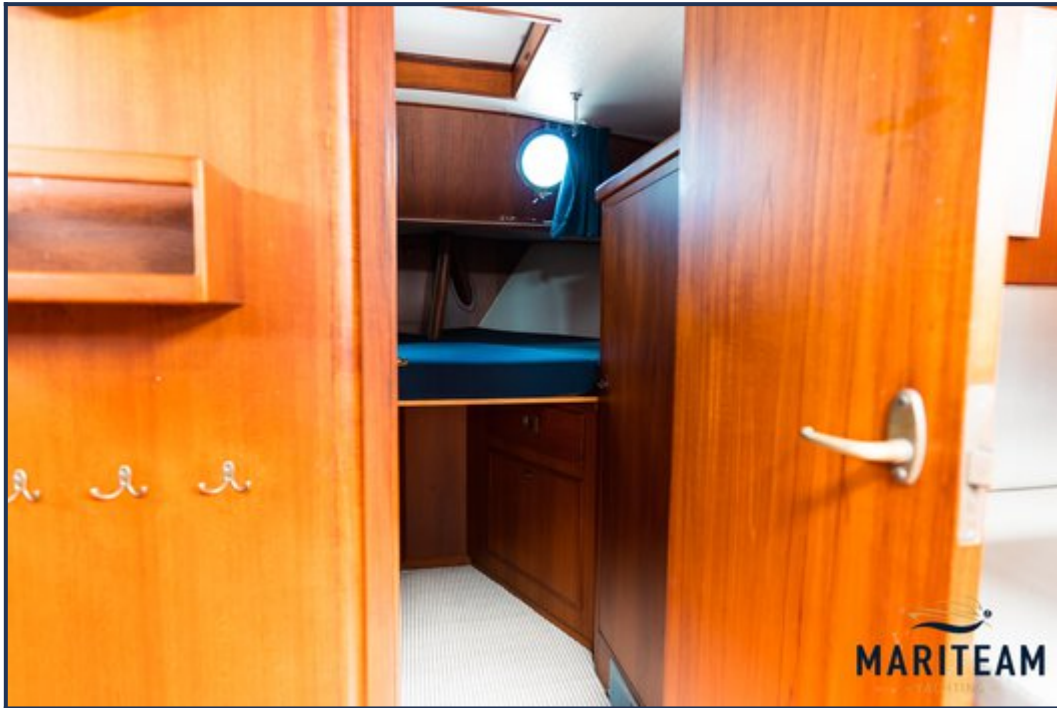






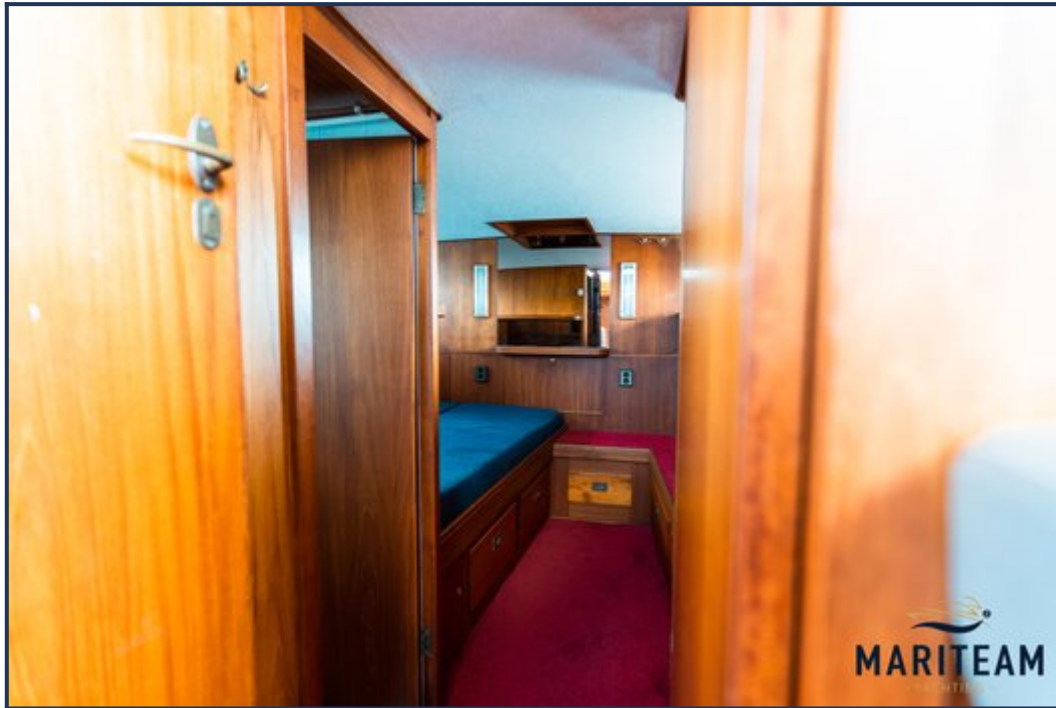






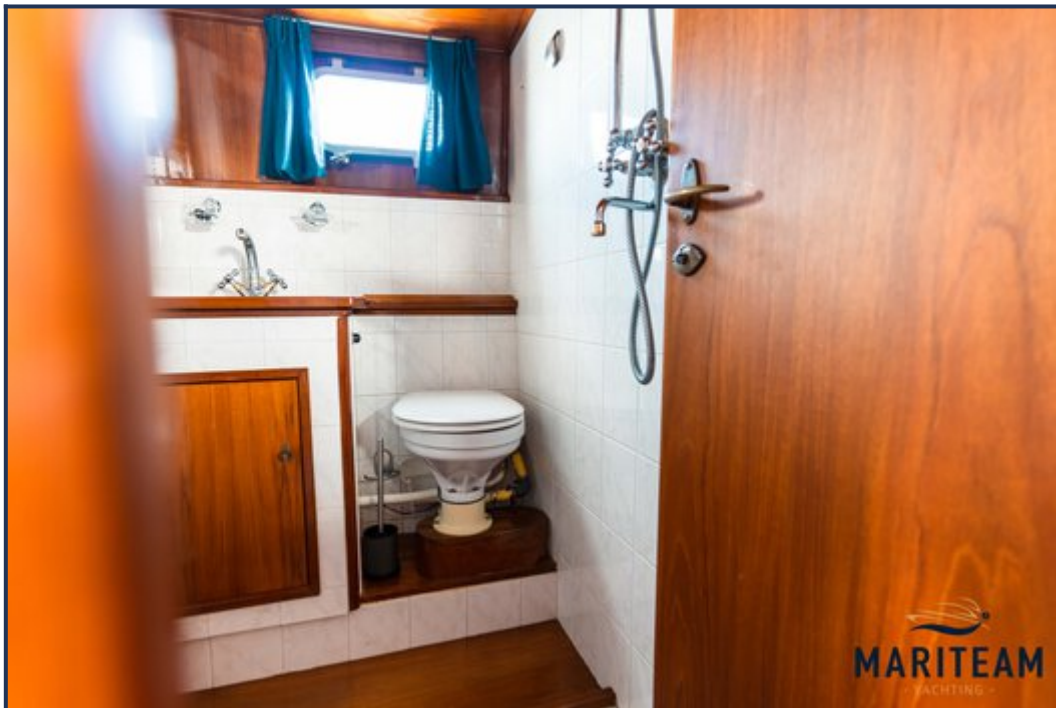
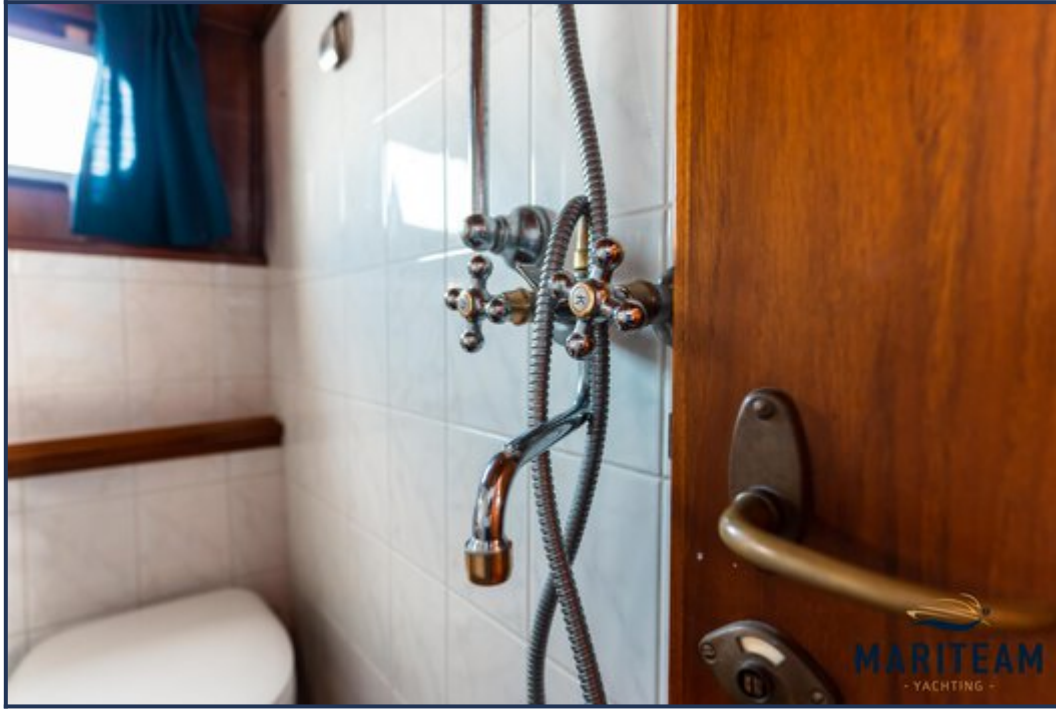




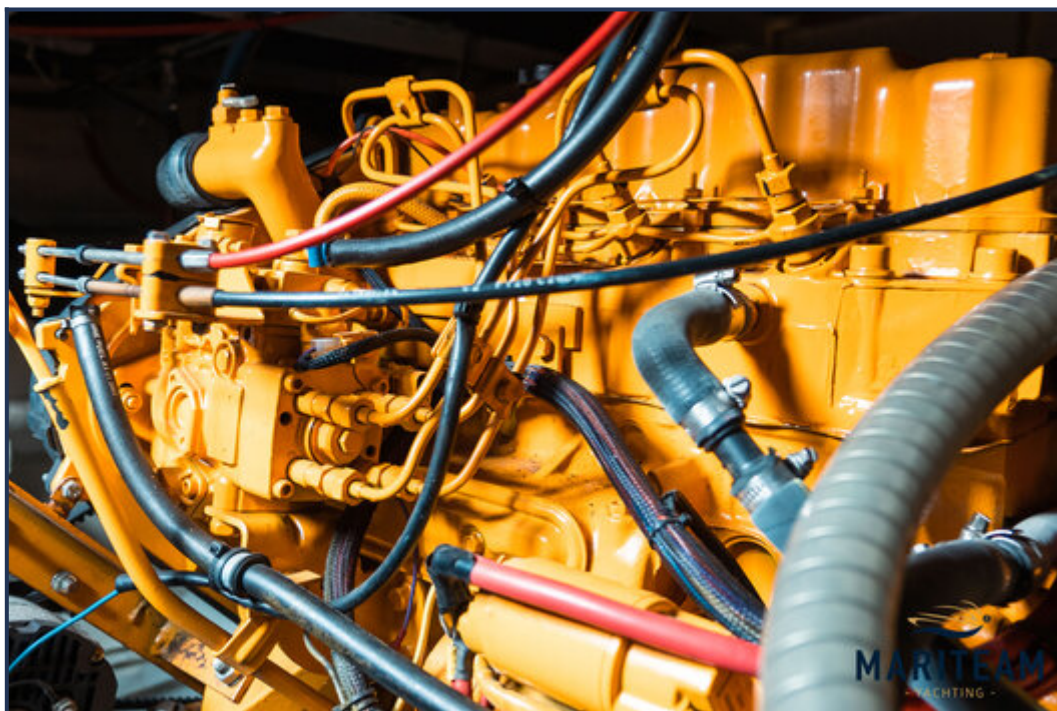
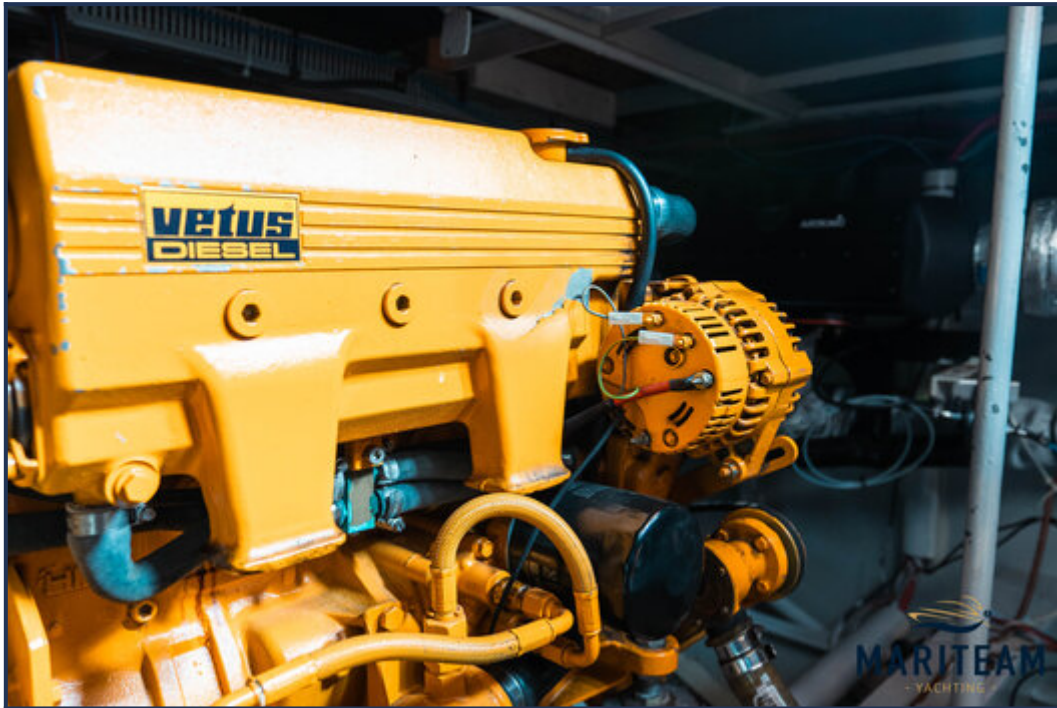


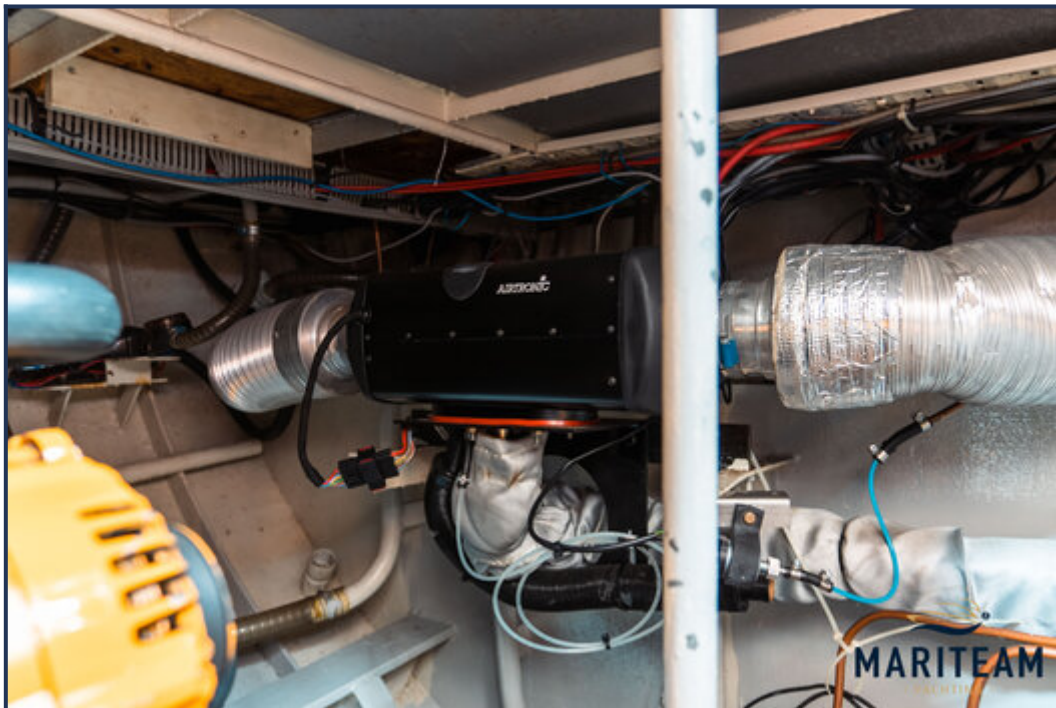












These particulars are given in good faith as supplied but cannot be guaranteed and cannot be used for contracts.