



MARITEAM

- YACHTING -



Grand Banks 46 Classic 'JOHNE M'

LOA (m):	14.35 m
Beam (m):	4.50 m
Draft (m):	1.33 m
Engines:	2x 210hp Cummins
Cabins:	2
Homeport:	Sales office, Heeg
Price:	€ (not set)

The Grand Banks 46 classic named 'Johne M' features an extended cockpit and is built with a galley-down layout, making it comfortable to stay on board with four people in two cabins.

MARITEAM YACHTING

De Draei 29, 8621 CZ Heeg 📍 The Netherlands 📞 Phone +31 (0) 582 889254

info@mariteamyachting.nl 📧 www.mariteamyachting.nl

Main specifications

Model:	46 Classic
LOA (m):	14.35 m
Beam (m):	4.50 m
Draft (m):	1.33 m
Year:	1988
Hull Material:	GRP
Cabins:	2
Sleeping places:	4
Number of main engine(s):	2
Power of main engine(s) (hp):	210
Brand of main engine(s):	Cummins
Price:	€ (not set)
VAT status:	EU Paid
HIN number:	GNDF0040B888

General

Name :	Johne M
Shipyard:	American Marine
Cruising speed (Kn):	6
Maximum speed (Kn):	19
Air draft (m):	4.44 (top of windshield)
Displacement (t):	16
Fuel tank (Litre and material):	2271L, Stainless steel
Freshwater Tank (Liter and material):	1077L
Black water tank (Litre and material):	80L
Hull material:	GRP

Superstructure material:	GRP
Deck material:	GRP
Deck finish:	Teak
Interior finish:	Teak
Window material:	Single safety glass
Window ventilation:	Sliding and tilting windows

Accommodation

Cabins:	2x
Double bed:	1x
Single berths:	2x
Showers:	2x
Toilets:	2x electric
Airconditioning system (Brand, model):	Marineair
Stove:	Bosch induction
Combi oven/microwave:	Panasonic
Oven:	Bosch
Refrigerator:	2x Grunert

Machinery

Port engine (Brand, type, hp, gearbox):	Cummins 6BTA5.9 210 Hp, Twin Disc MG 5050SC
Engine hours port engine:	1755
Star engine (Brand, type, hp, gearbox):	Cummins 6BTA5.9 210 Hp, Twin Disc MG 5050SC
Engine hours starboard engine:	1778
Steering system:	Hydraulic

Drive (Shaft, IPS, Jet):	Drive shaft
Shaft lubrication:	Water lubricated
Generator (Brand, type, Kw):	Fisher panda (2021)
Bowthruster (Brand, type, elec/hyd):	Sidepower (2020)
Hot water system:	Boiler

Electrical system

DC system (V) AC system (V):	12V / 220V
Battery charger (V/W/Amp):	Mastervolt Mass Combi Ultra 12/3000 (2022)
Inverter (V/W/Amp):	Mastervolt Mass Combi Ultra 12/3000 (2022)
House battery (Number of battery,type, total Amp, year):	3x Victron AGM 12-220
Start battery (Number of battery,type, total Amp, year):	1x Victron AGM 12-220

Safety system

Electrical bilge pump:	2x Rule industries
Manual bilge pump:	1x PAR
Horn:	FIAM S.P.A.

Navigation system

Compass:	Danforth
Gps plotter:	Raymarine
Radar :	Raymarine
Autopilot:	Raymarine ST6002

Log:	Raymarine
Depth meter:	Raymarine

Equipment

Tender crane:	Mast + Boom
Gangway:	1 Hydraulic
Anchor:	1x
Windlass:	Lofrans Tigres
Deckwash:	1x
Deck shower:	1x

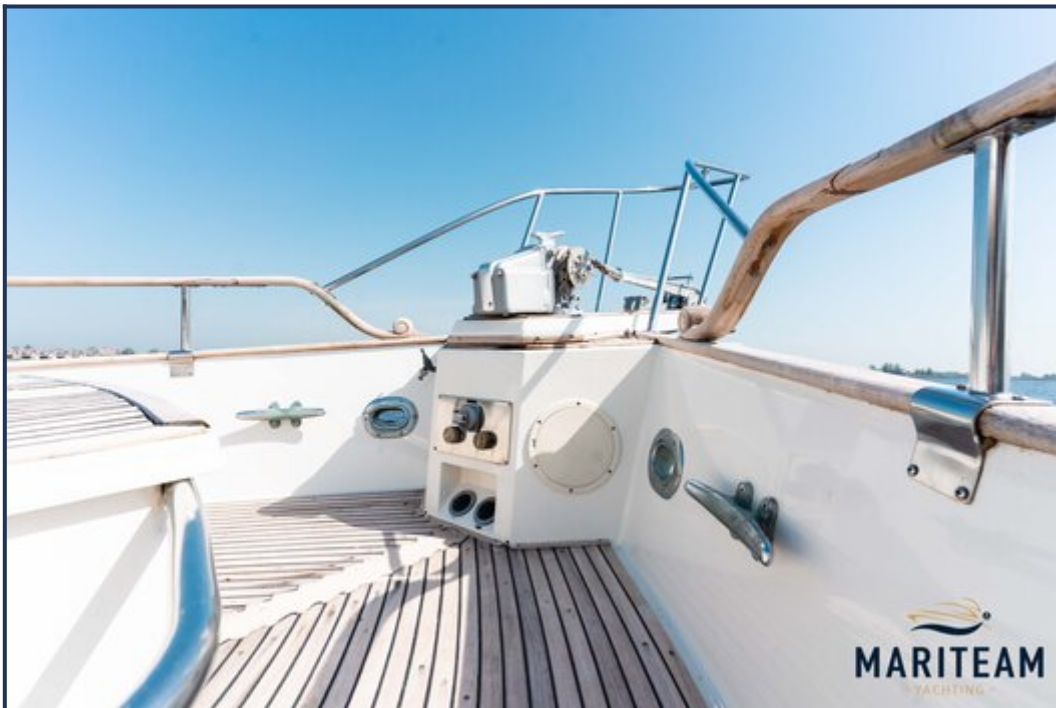




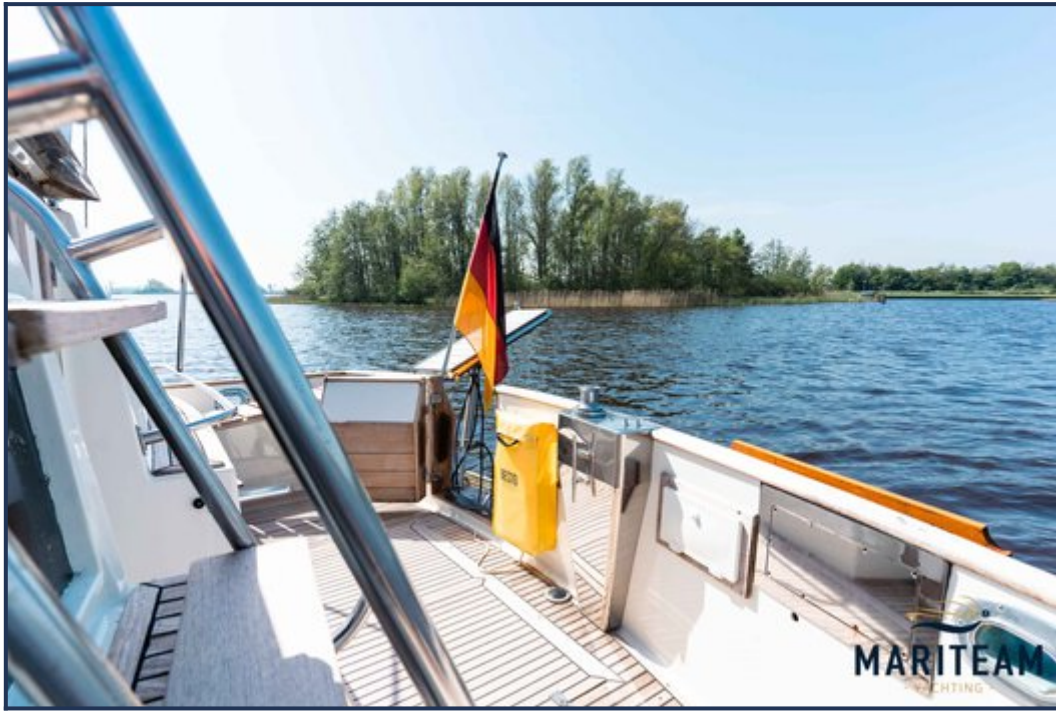


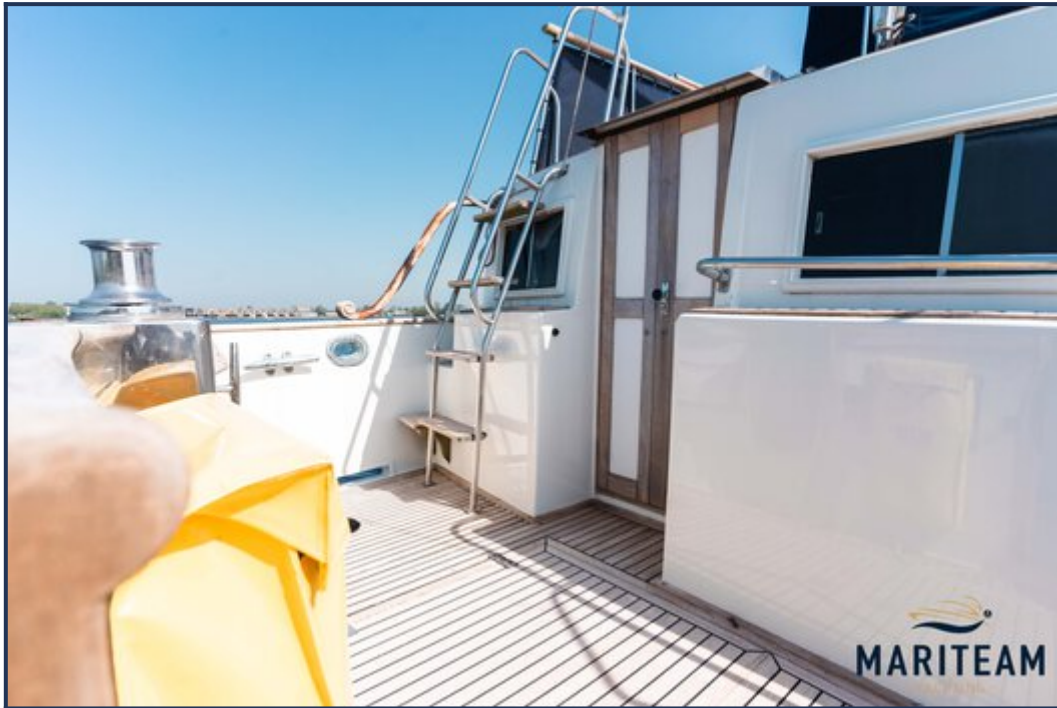




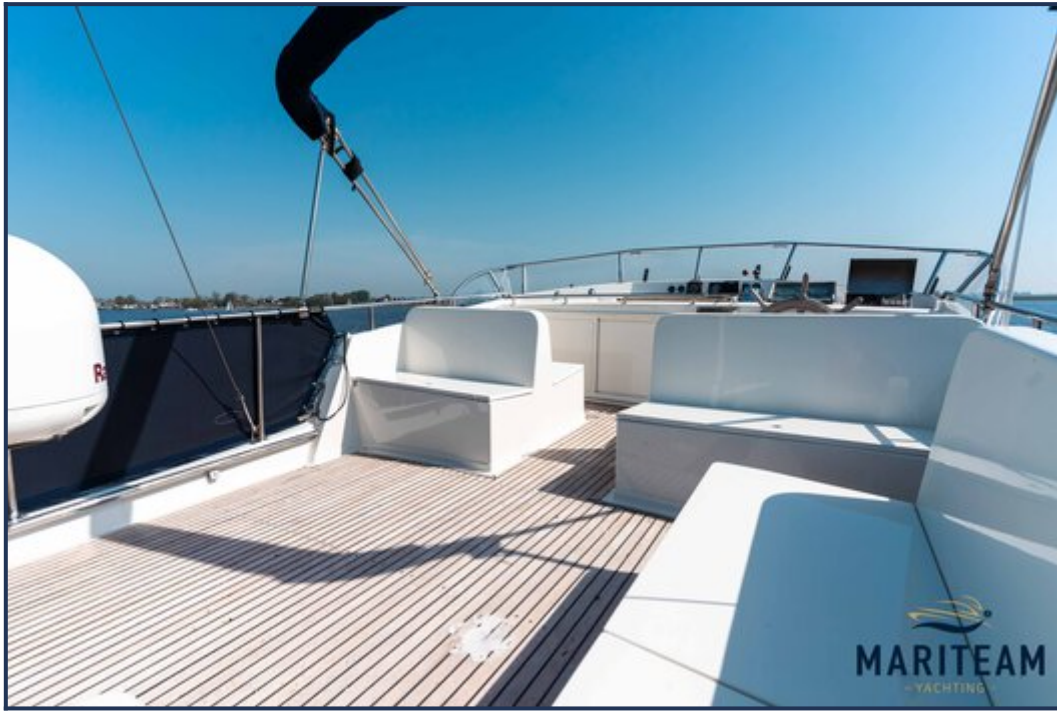












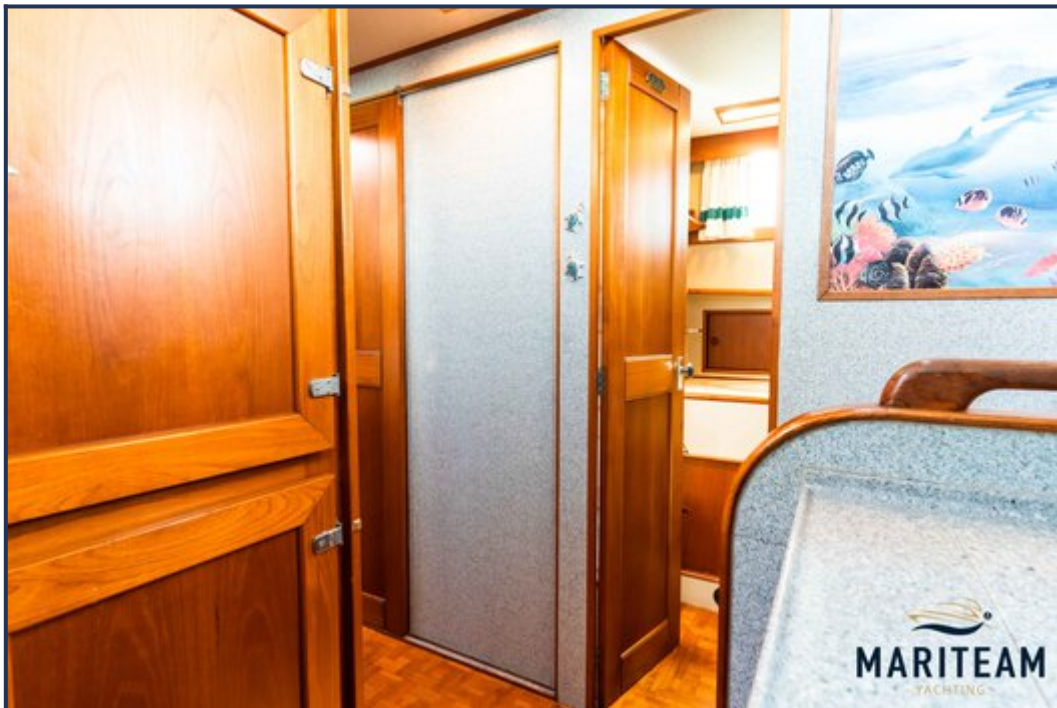
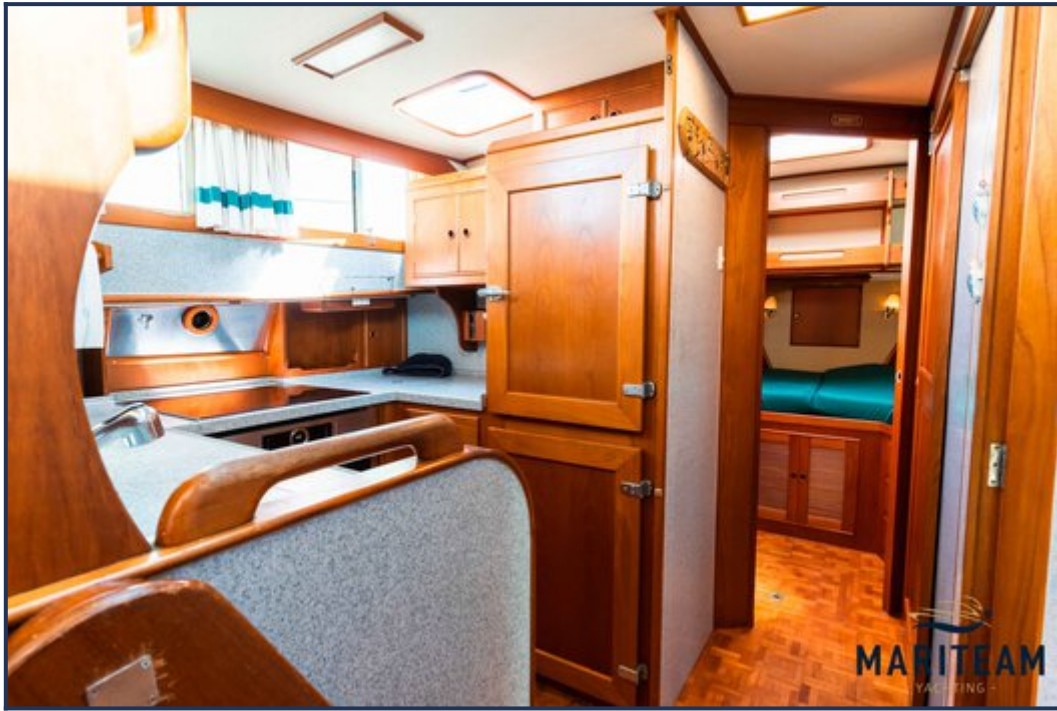






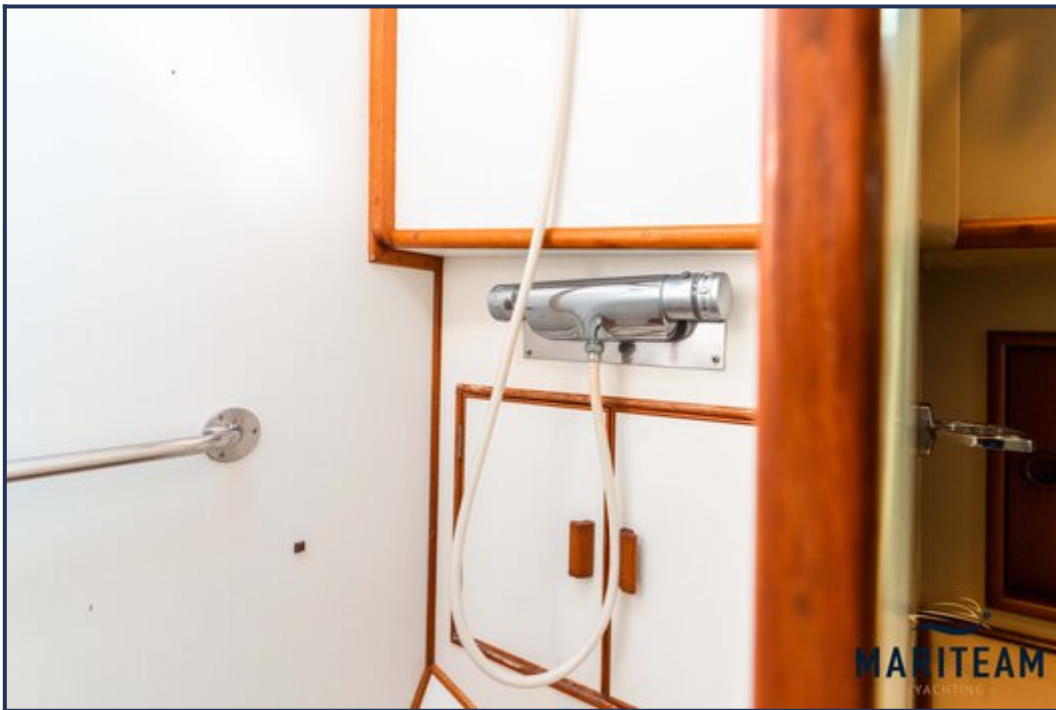
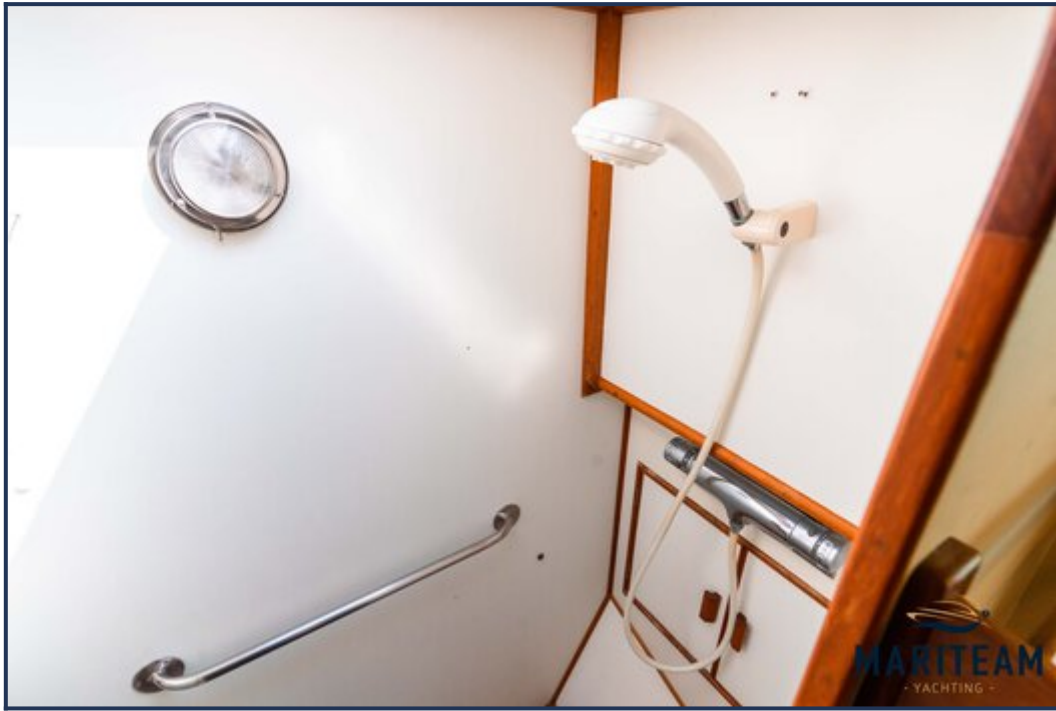




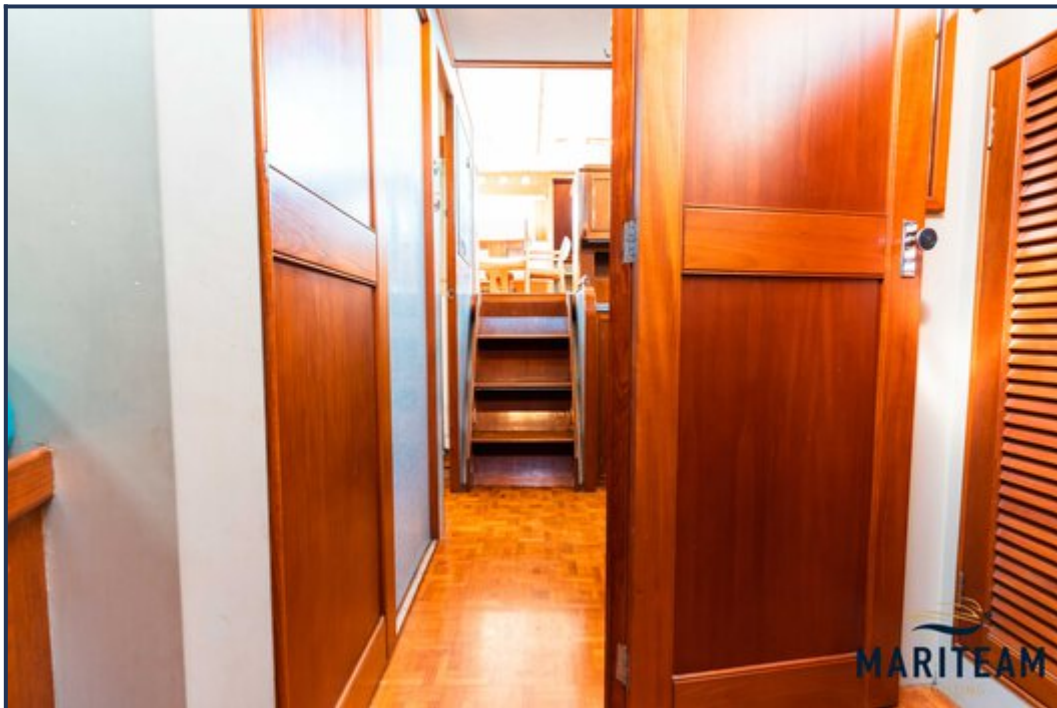


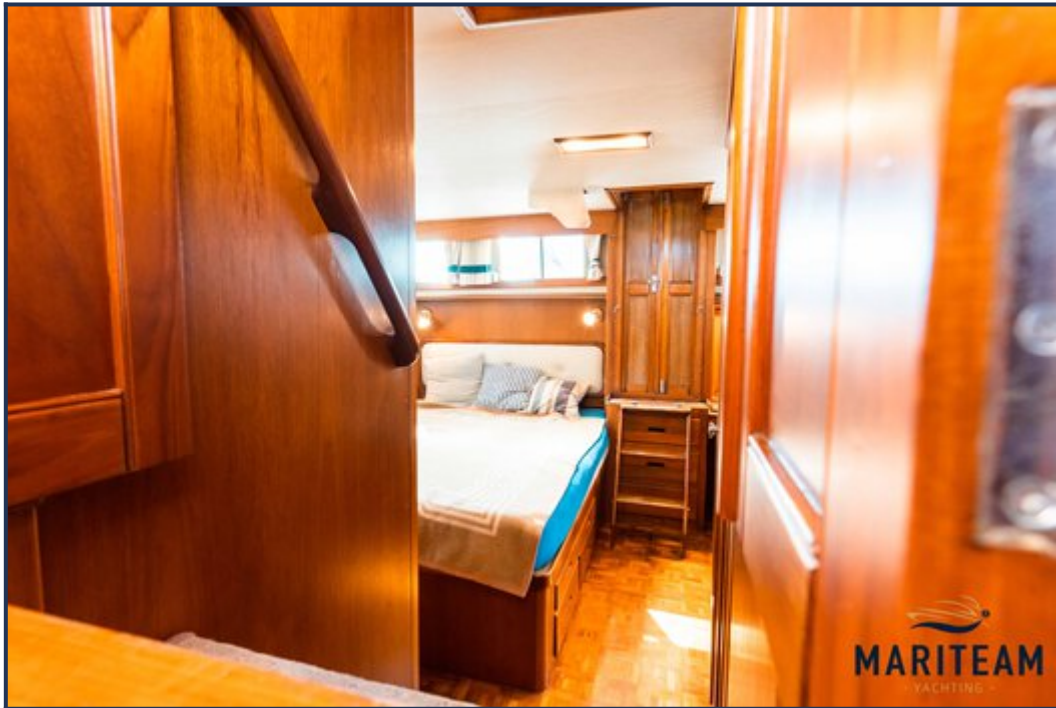
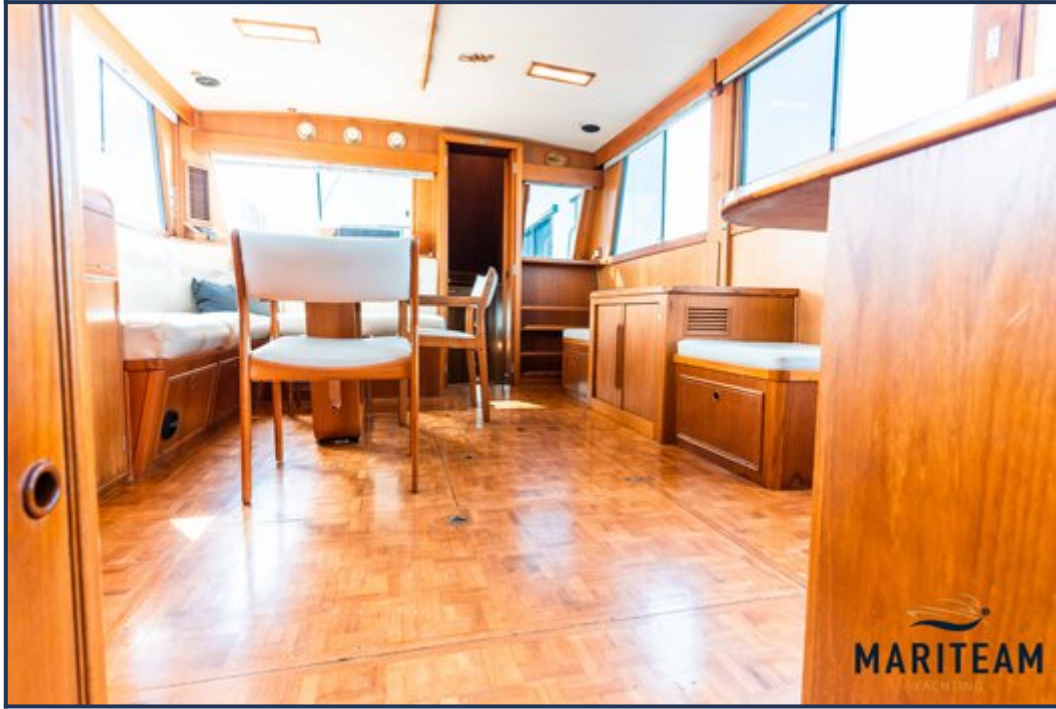


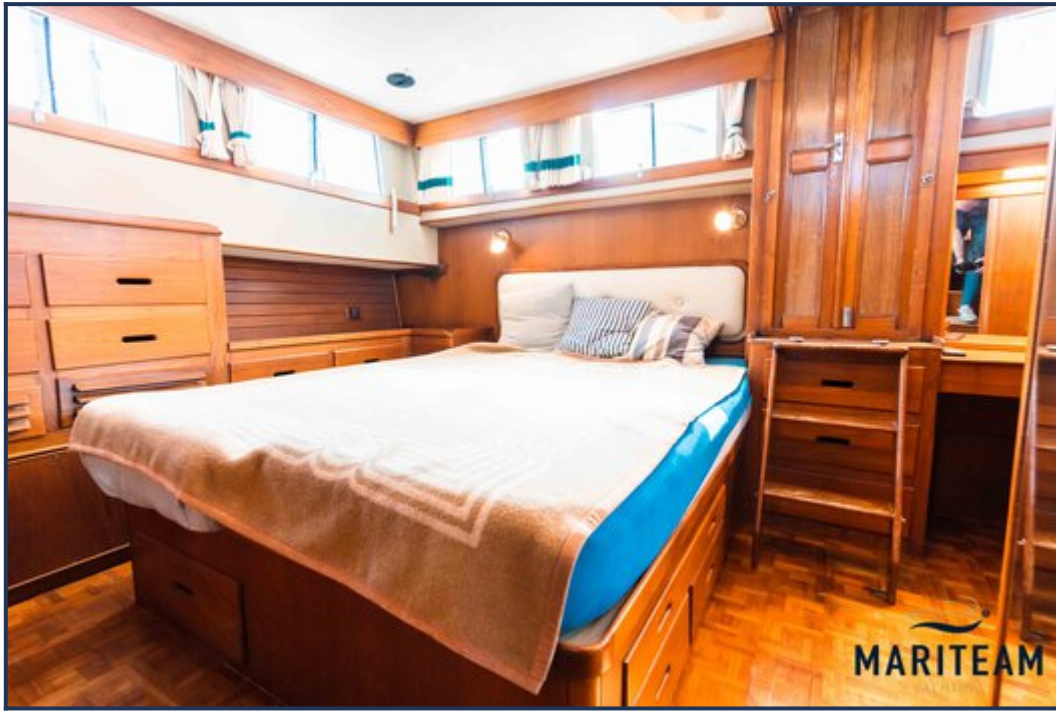


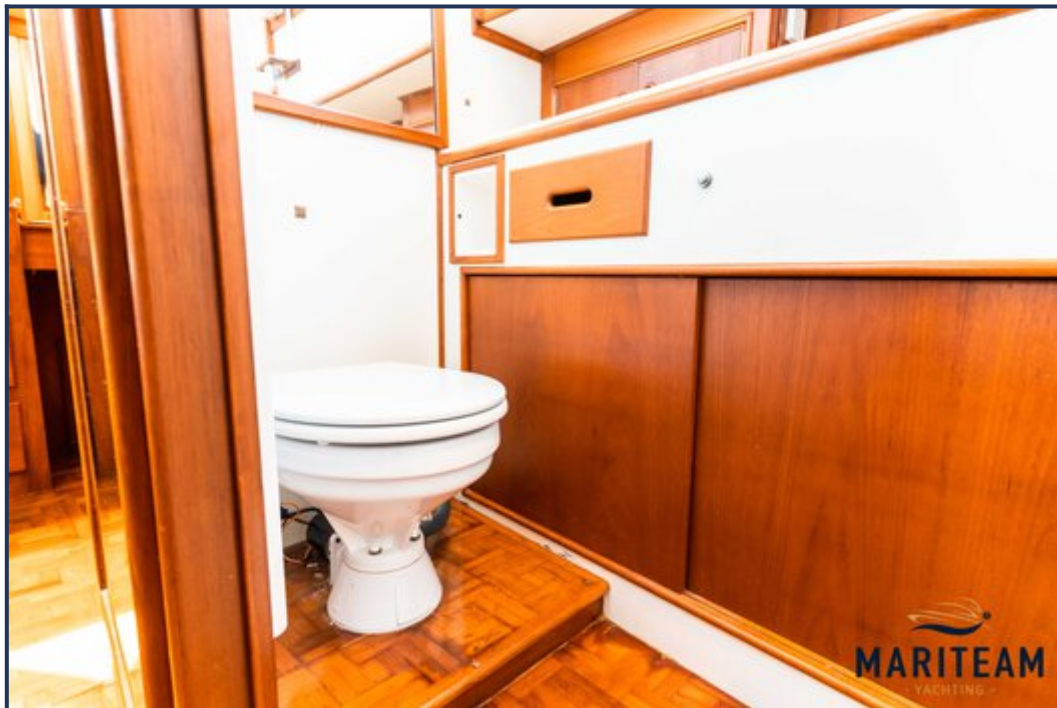


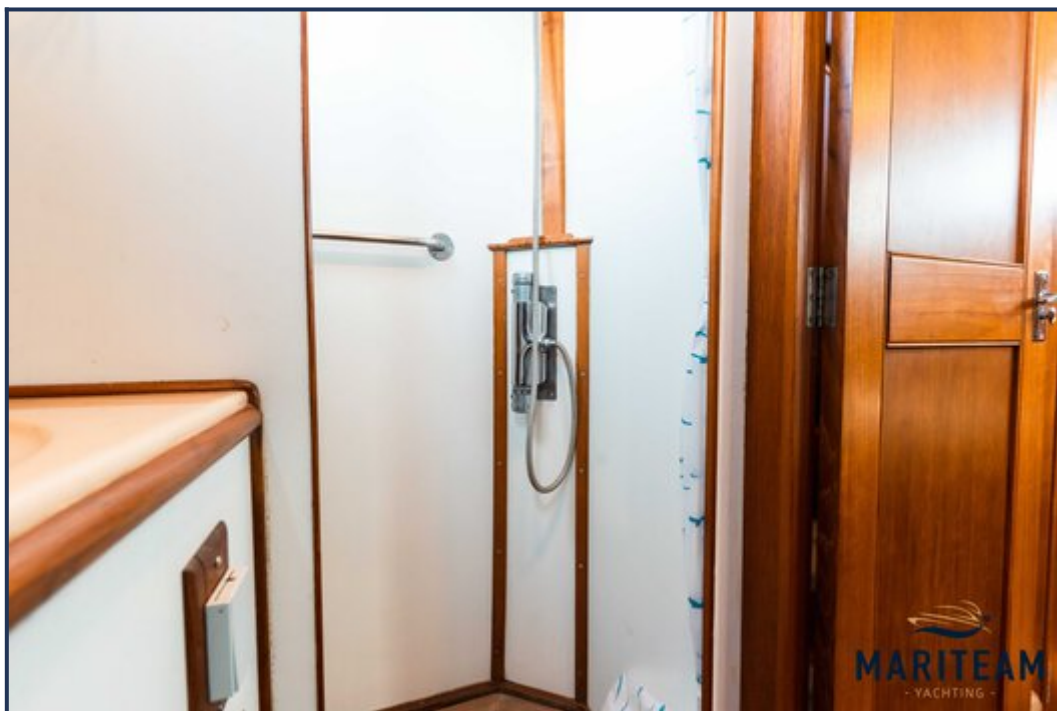
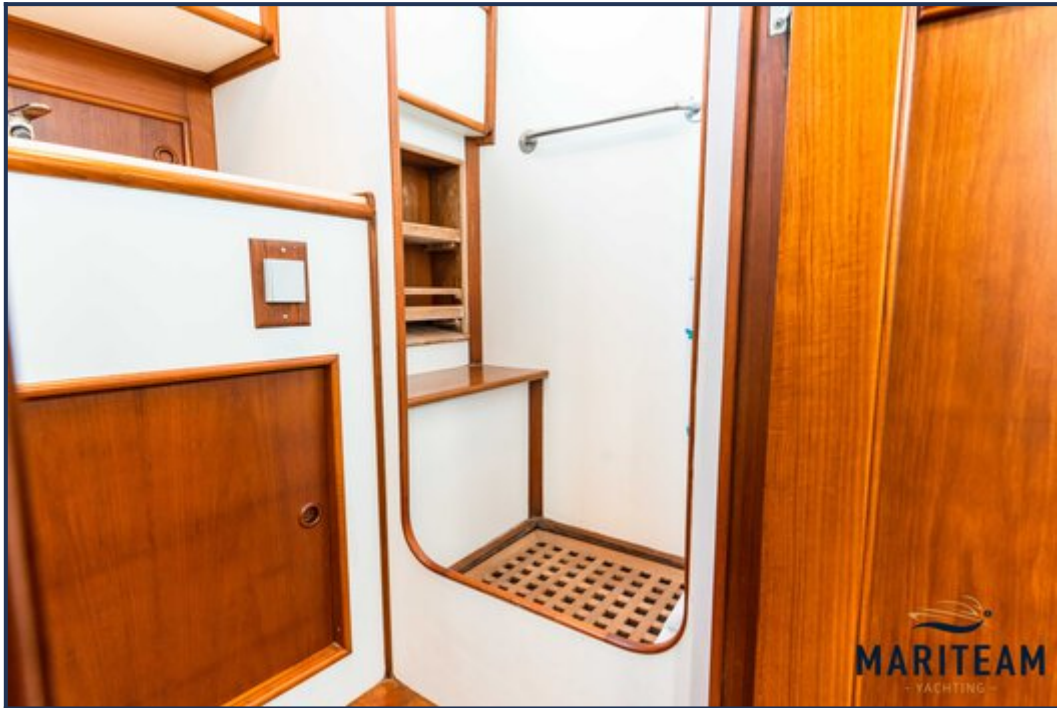


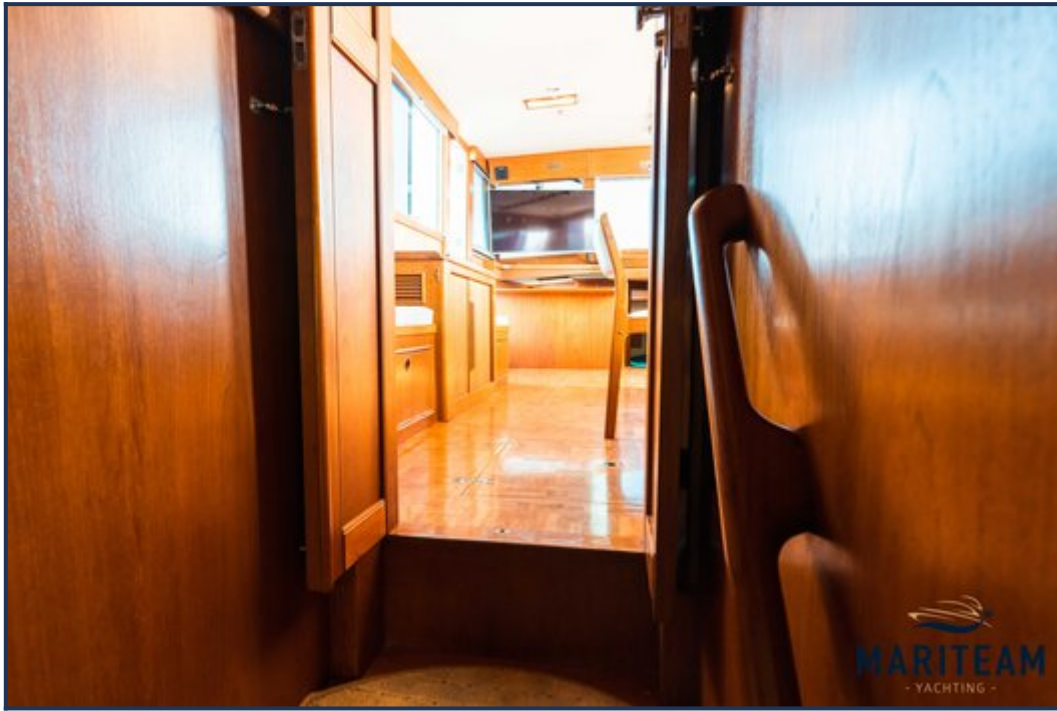


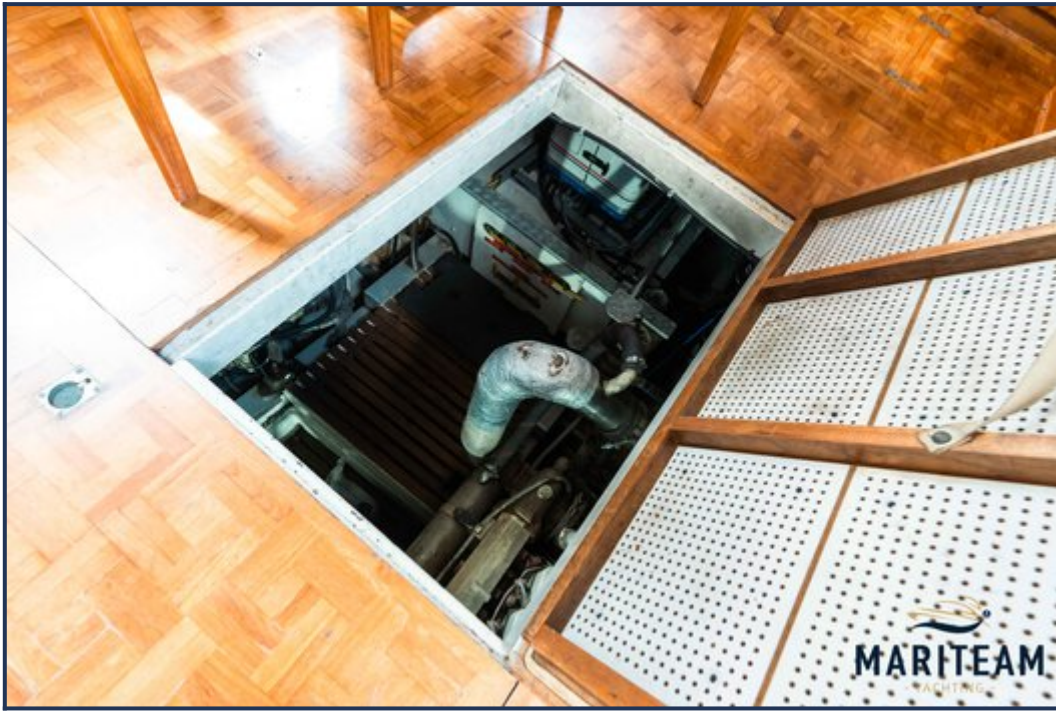




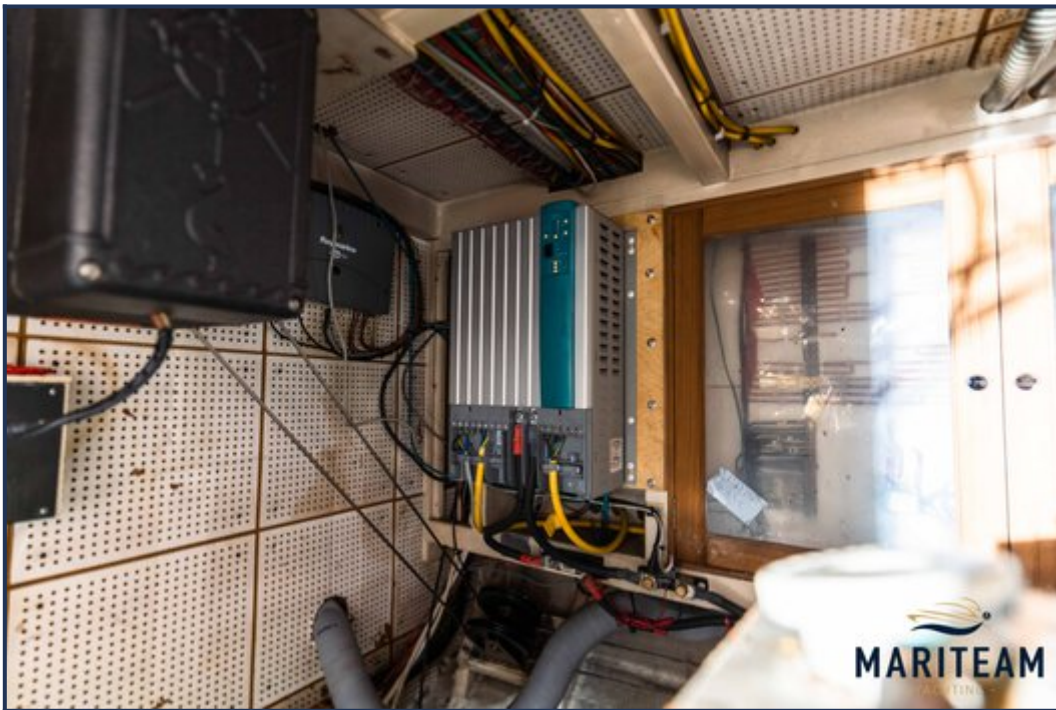












These particulars are given in good faith as supplied but cannot be guaranteed and cannot be used for contracts.