



MARITEAM

- YACHTING -



Grand Banks 42 Europa 'LOTUS'

| | |
|------------|--------------------|
| LOA (m): | 12.98 m |
| Beam (m): | 4.14 m |
| Draft (m): | 1.27 m |
| Engines: | 2x 135hp Ford |
| Cabins: | 2 |
| Homeport: | Sales office, Heeg |
| Price: | € 195,000 |

The Grand Banks 42 Europa 'LOTUS' from 1991 is a classic and timeless motor yacht that, over the years, has remained one of the most coveted models. This specific model is equipped with two reliable 135 hp Ford Sabre engines, providing sufficient power for cruising and long-distance voyages. The synchronized motor system ensures smooth and efficient operation, allowing the two engines to seamlessly collaborate for improved performance.

MARITEAM YACHTING

De Draei 29, 8621 CZ Heeg 📍 The Netherlands 📞 Phone +31 (0) 582 889254
info@mariteamyachting.nl 🌐 www.mariteamyachting.nl

Main specifications

| | |
|-------------------------------|-----------|
| Model: | 42 Europa |
| LOA (m): | 12.98 m |
| Beam (m): | 4.14 m |
| Draft (m): | 1.27 m |
| Year: | 1991 |
| Hull Material: | GRP |
| Cabins: | 2 |
| Sleeping places: | 2 |
| Number of main engine(s): | 2 |
| Power of main engine(s) (hp): | 135 |
| Brand of main engine(s): | Ford |
| Price: | € 195,000 |
| VAT status: | EU paid |
| Year launched: | 1991 |

General

| | |
|---------------------------------------|-----------------------------------|
| Name : | LOTUS |
| Shipyard: | American Marine Limited Singapore |
| CE-category: | Category B |
| Cruising speed (Kn): | 8.5 kn @ 1900RPM |
| Displacement (t): | 15.5 |
| Fuel tank (Litre and material): | 2x 1136L, mild steel |
| Freshwater Tank (Liter and material): | 1x 750 L, GRP |
| Hull material: | GRP |
| Superstructure material: | GRP |
| Deck material: | GRP |

| | |
|---------------------|------------------------------|
| Deck finish: | Teak |
| Interior finish: | Teak |
| Window material: | Single Safety glas |
| Window ventilation: | Sliding and tilting windows. |
| Antifouling (Year): | October 2023 |

Accommodation

| | |
|--------------------------------------|------------------------|
| Cabins: | 2x |
| Double bed: | 1x |
| Single berths: | 1x |
| Showers: | 1x |
| Toilets: | Jabsco |
| Heating system (brand, model, type): | Wallas 30 D hot air |
| Stove: | Force 10 Electric |
| Combi oven/microwave: | Force 10 electric oven |
| Oven: | Force 10 Electric |
| Refrigerator: | Isotherm Elegance |

Machinery

| | |
|---|--|
| Main engines control (Brand and type): | Morse, Glendinning engine synchronizer |
| Port engine (Brand, type, hp, gearbox): | Ford Sabre, 135HP |
| Engine hours port engine: | 2913 |
| Star engine (Brand, type, hp, gearbox): | Ford Sabre, 135HP |
| Engine hours starboard engine: | 2915 |
| Steering system: | Mechanical |

| | |
|-------------------------------------|-----------------------------|
| Drive (Shaft, IPS, Jet): | Drive shaft |
| Prop (Number of blades, material): | 4 blade |
| Generator (Brand, type, Kw): | Present, overhauled in 2021 |
| Generator hours: | 400 |
| Water pressure pump (Brand, model): | Jabsco Par Max |
| Hot water system: | Boiler |

Electrical system

| | |
|--|---|
| DC system (V) AC system (V): | 12V / 220 V - Separate backup system for electrical systems |
| Battery charger (V/W/Amp): | Mastervolt ChargeMaster |
| Inverter (V/W/Amp): | Mastervolt 12/3000 100A Combi |
| House battery (Number of battery,type, total Amp, year): | 2x, 200 Amp |
| Start battery (Number of battery,type, total Amp, year): | 2x , 200 Amp - 1x for generator. |

Safety system

| | |
|--------------------------------|------------------------------|
| Life raft: | Present, expired inspection. |
| Fire extinguisher engine room: | Present, automatic |
| EPIRB: | present |
| Horn: | present |

Navigation system

| | |
|----------|----|
| Compass: | 1x |
|----------|----|

| | |
|-------------------|---------------------------------|
| Gps plotter: | Raymarine plotter AXIOM +9 RV |
| Radar screen: | Raymarine plotter AXIOM +9 |
| Radar : | Raymarine Quantum Doppler Radar |
| Autopilot: | Raymarine |
| Rudder indicator: | Quarz VDO |
| Depth meter: | Raymarine 3D-Vision |

Equipment

| | |
|---------------|-------------------------|
| Tender: | Tender + 7pk engine |
| Tender crane: | Pulley system. |
| Gangway: | Manual folding gangway. |
| Anchor: | 1x, Drag Anchor |
| Windlass: | Elektric |









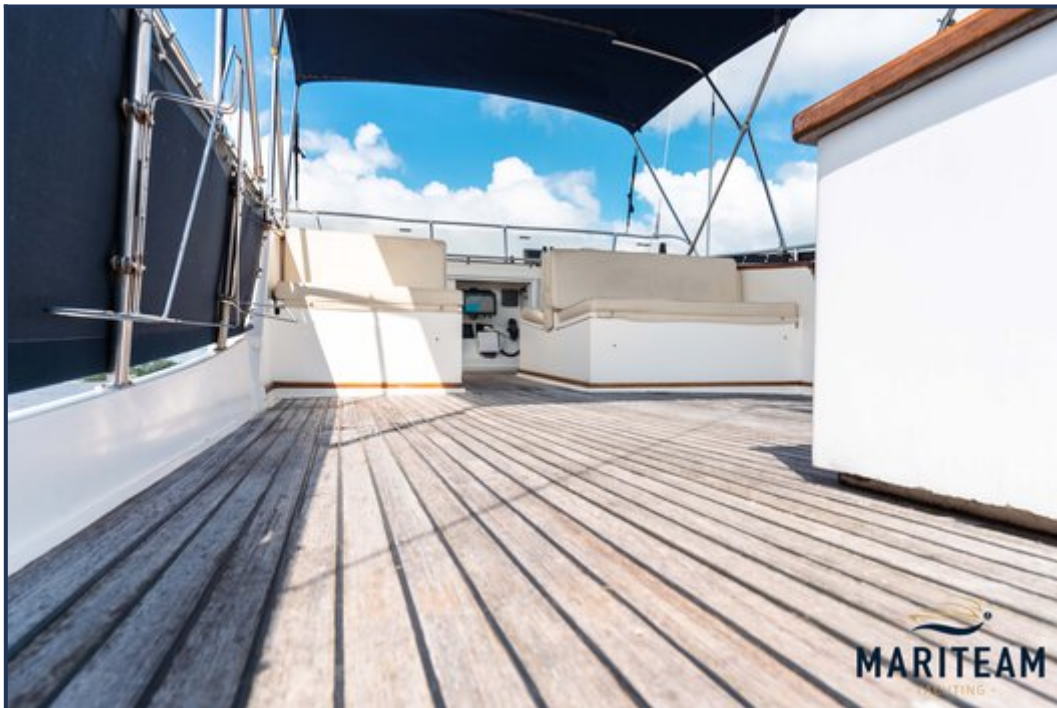




















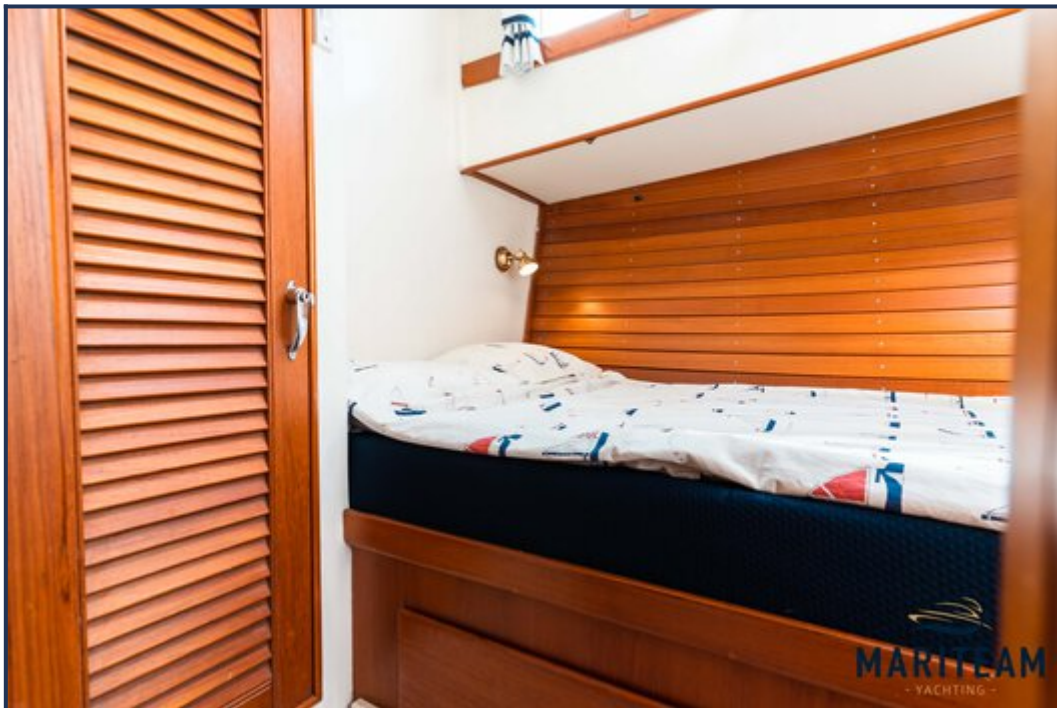
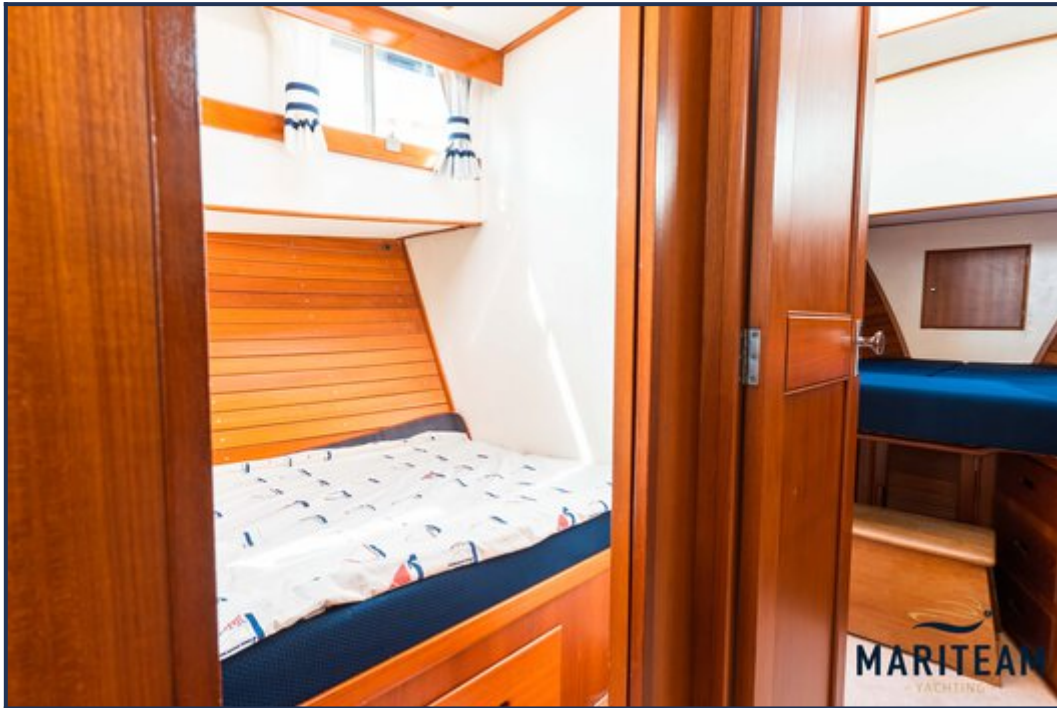






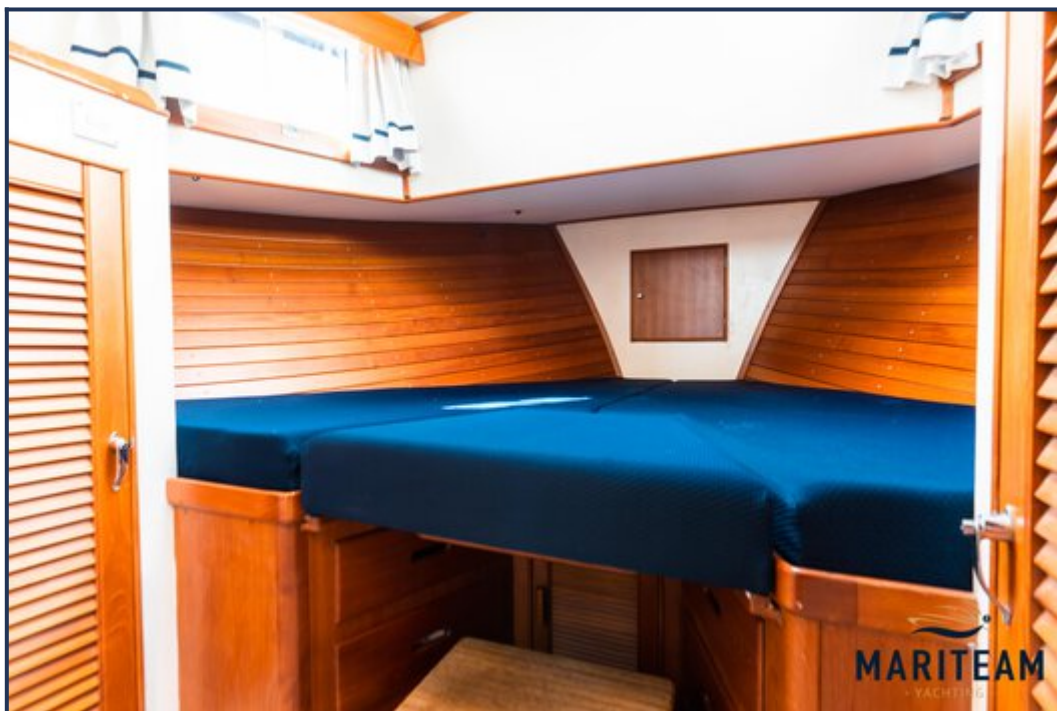
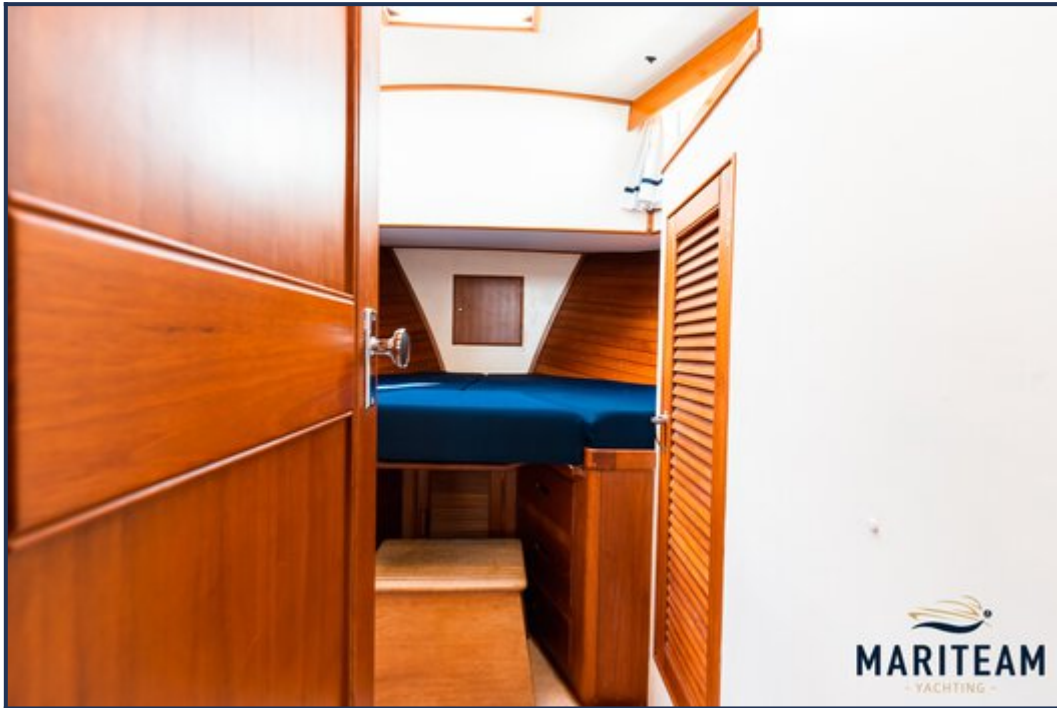


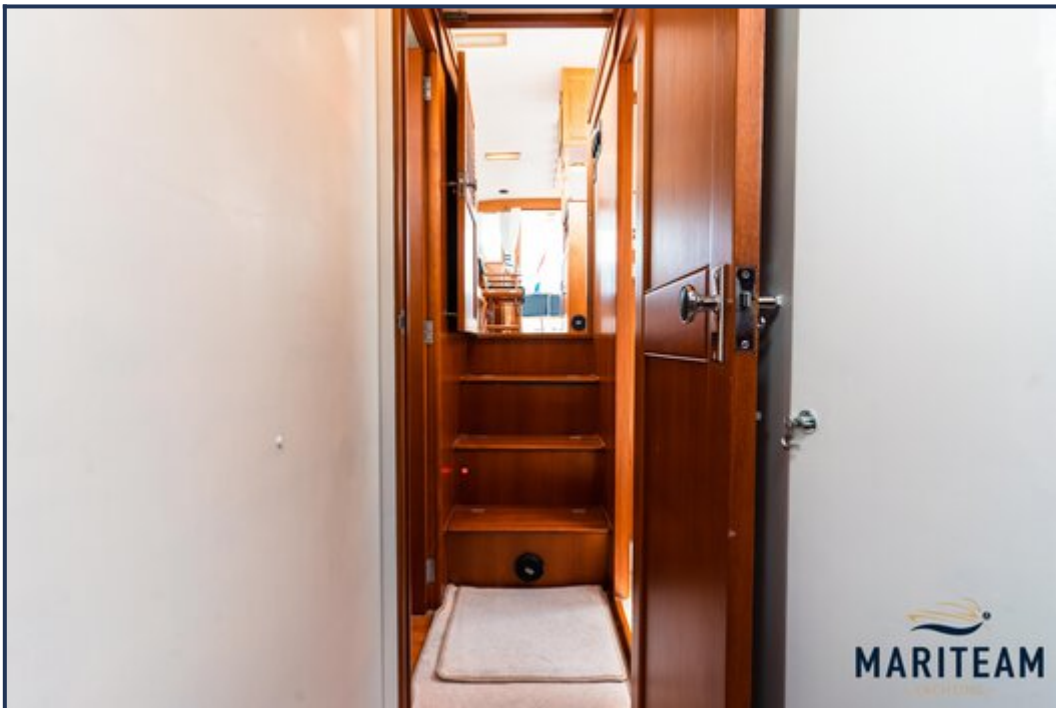
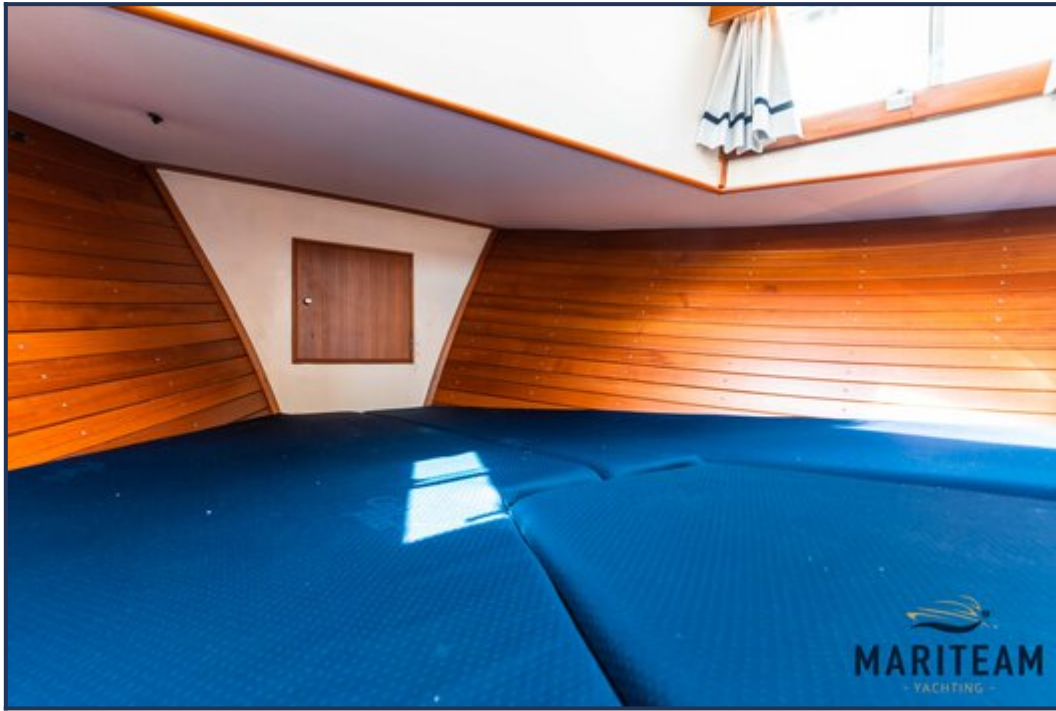


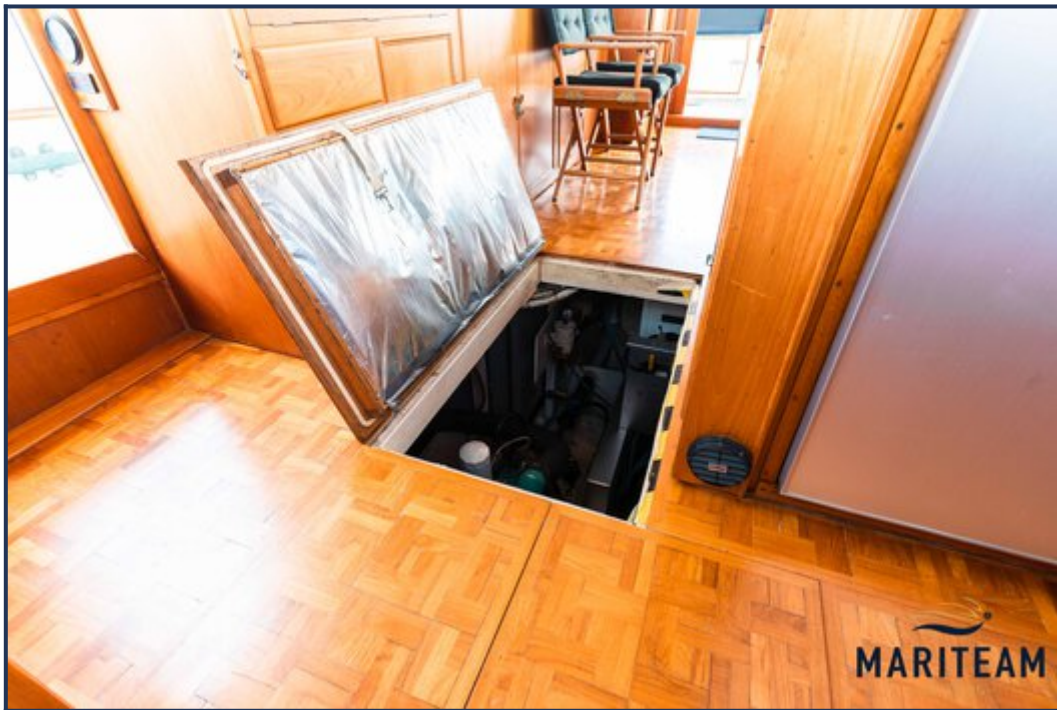


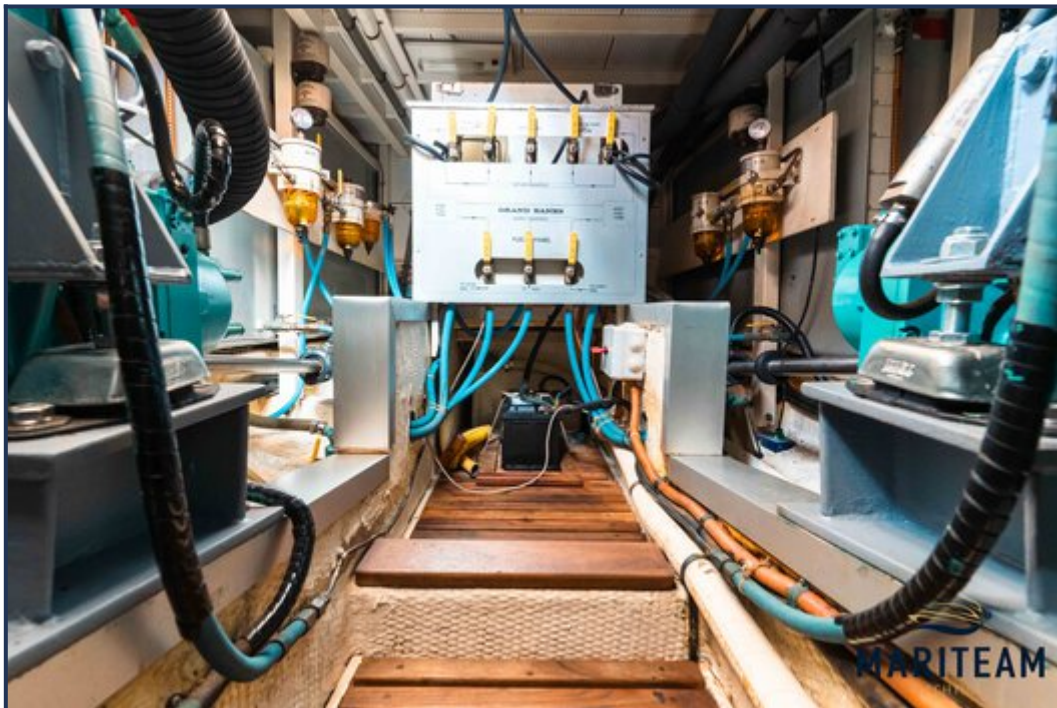
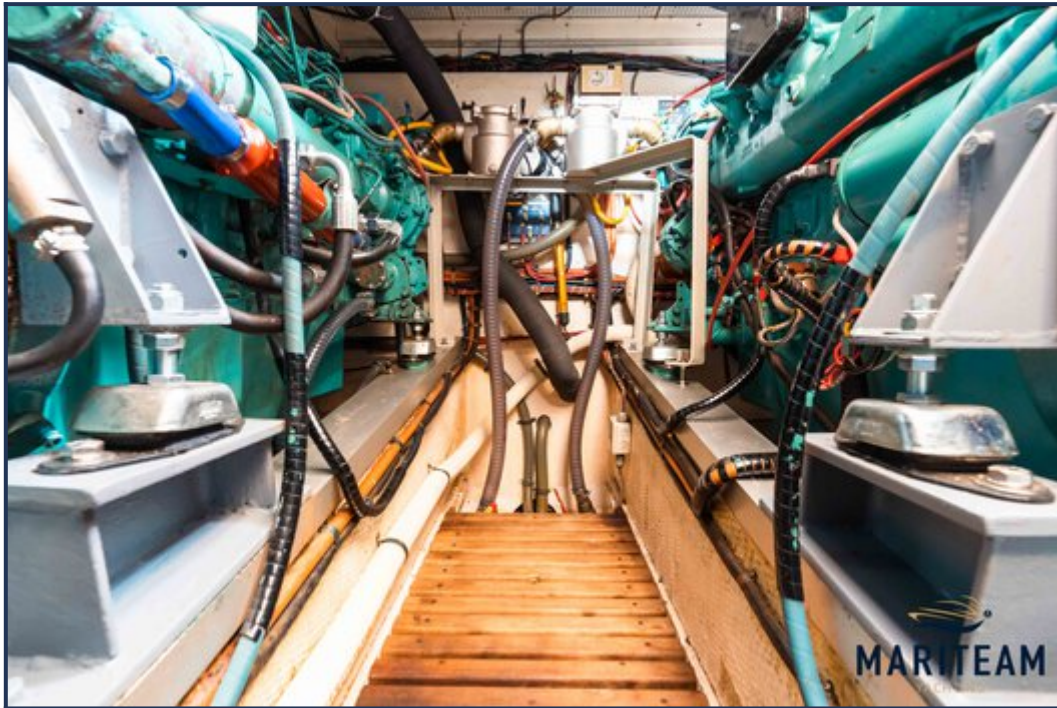




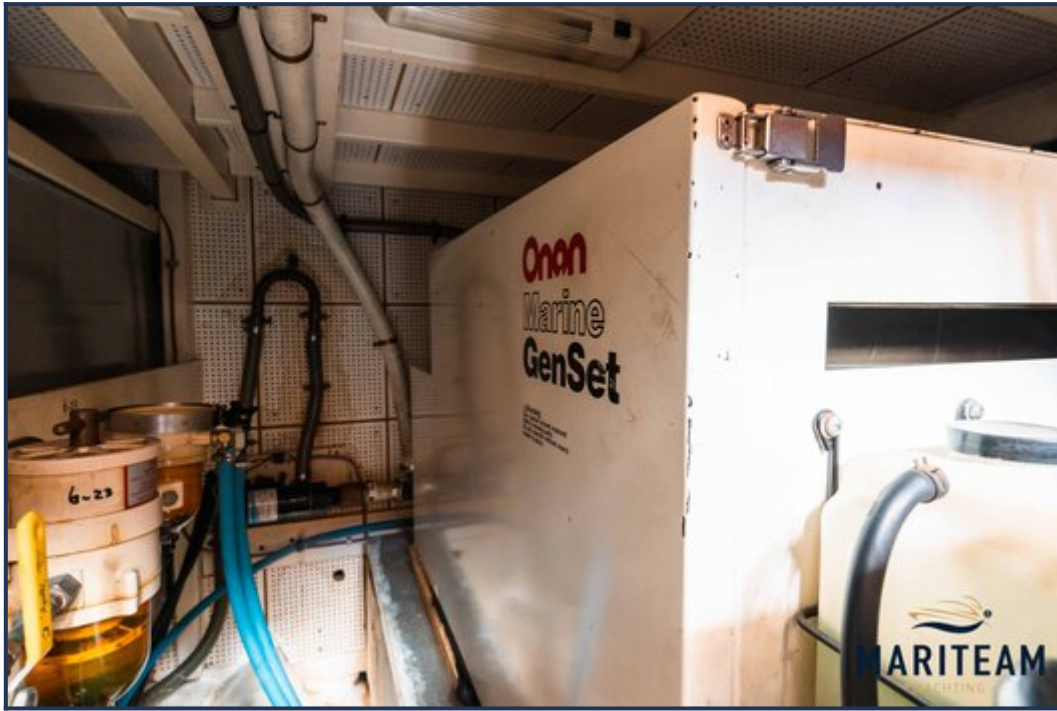














These particulars are given in good faith as supplied but cannot be guaranteed and cannot be used for contracts.