



MARITEAM

- YACHTING -



MARITEAM
- YACHTING -

Grand Banks 47 Heritage EU 'Ruitentroef'

LOA (m):	14.26 m
Beam (m):	4.80 m
Draft (m):	1.17 m
Engines:	2x 509hp Caterpillar
Cabins:	2
Homeport:	Sales office, Heeg
Price:	€ (not set)

Experience the joy of cruising on the 'Ruitentroef,' a beautiful Grand Banks 47 renowned for its enhanced sailing characteristics.

MARITEAM YACHTING

De Draei 29, 8621 CZ Heeg 📍 The Netherlands 📞 Phone +31 (0) 582 889254

info@mariteamyachting.nl 📧 www.mariteamyachting.nl

Main specifications

Model:	47 Heritage EU
LOA (m):	14.26 m
Beam (m):	4.80 m
Draft (m):	1.17 m
Year:	2005
Hull Material:	GRP
Cabins:	2
Sleeping places:	4
Number of main engine(s):	2
Power of main engine(s) (hp):	509
Brand of main engine(s):	Caterpillar
Price:	€ (not set)
VAT status:	EU Paid
HIN number:	MY-GNDV0002I506

General

Name :	Ruitentroef
Shipyard:	Grand Banks Yachts
CE-category:	A
Cruising speed (Kn):	16
Maximum speed (Kn):	21
Air draft (m):	4.39 (top of windshield)
Displacement (t):	23
Fuel tank (Litre and material):	2271 L, GRP
Freshwater Tank (Liter and material):	984 L, aluminium
Black water tank (Litre and material):	291 L, plastic

Hull material:	GRP
Superstructure material:	GRP
Deck material:	GRP
Deck finish:	Teak
Interior finish:	Teak
Window material:	Laminated and tempered
Antifouling (Year):	2023

Accommodation

Cabins:	2 x
Double bed:	1 x
Single berths:	2 x
Showers:	2 x
Toilets:	2 x Tecma, electric
Heating system (brand, model, type):	Webasto
Stove:	Bosch, inductie (2020)
Refrigerator:	Vitifrigo
Freezer:	freezer compartment
Washing machine:	Candy 4kg

Machinery

Main engines control (Brand and type):	Morse CH 56000
Port engine (Brand, type, hp, gearbox):	Caterpillar, C-9, 509 PK, Twin Disc MG 5075 A
Engine hours port engine:	1572
Star engine (Brand, type, hp, gearbox):	Caterpillar, C-9, 509 PK, Twin Disc MG 5075 A

Engine hours starboard engine:	1609
Steering system:	Hydraulic
Drive (Shaft, IPS, Jet):	Drive shaft
Prop (Number of blades, material):	5, bronze
Generator (Brand, type, Kw):	Onan, MDKAW , 7 Kw
Stabilizer system:	DMS Magnus Master (2020)
Bowthruster (Brand, type, elec/hyd):	Side power, SP 125T
Water pressure pump (Brand, model):	Schurflo, 5901-0201
Hot water system:	Seaward, 75 L

Electrical system

DC system (V) AC system (V):	12 V / 230V
Battery charger (V/W/Amp):	Mastervolt, Dakar combi 12V / 2500W / 100 AMP
Inverter (V/W/Amp):	Mastervolt, Dakar combi 12V / 2500W / 100 AMP

Safety system

Life raft:	Safeguard
Electrical bilge pump:	4 x Rule GPH 2000
Manual bilge pump:	Reverso, GP 3013
Fire extinguisher engine room:	Fireboy HFC-227ea, MA2-750-227
Horn:	Kahlenberg PHG-07

Navigation system

Compass:	Ritchie
----------	---------

Gps plotter:	Garmin GPS map 1222 Touch (2020)
Radar screen:	Garmin GPS map 1222 Touch (2020)
Radar :	Garmin Phantom 24 (2020)
Autopilot:	Garmin GHC20 (2020)
Rudder indicator:	Garmin GMI20 (2020)
Log:	Garmin GMI20 (2020)
Depth meter:	Garmin GMI20 (2020)
Wind meter :	Garmin GMI20 (2020)
VHF:	2 x Garmin GHS 11 (2020)
AIS:	Garmin 800 (2020)

Equipment

Tender crane:	Opac Mare 250kg
Anchor:	1 x 27 kg
Windlass:	Lofrans Tigres 1200W
Deckwash:	1 x
Deck shower:	1 x





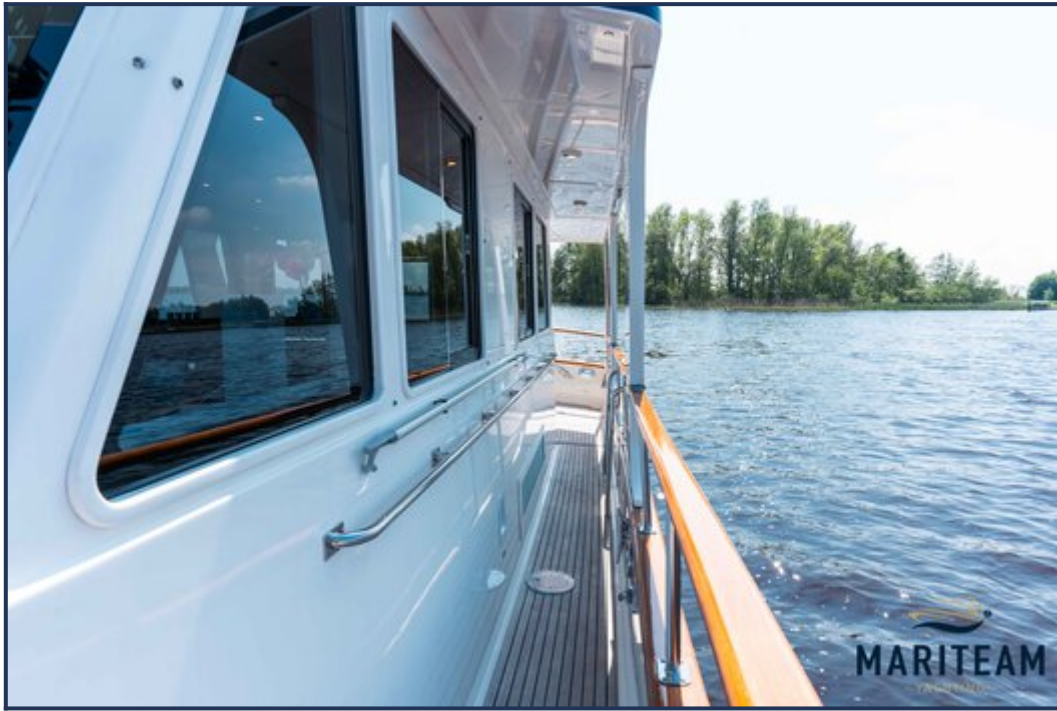




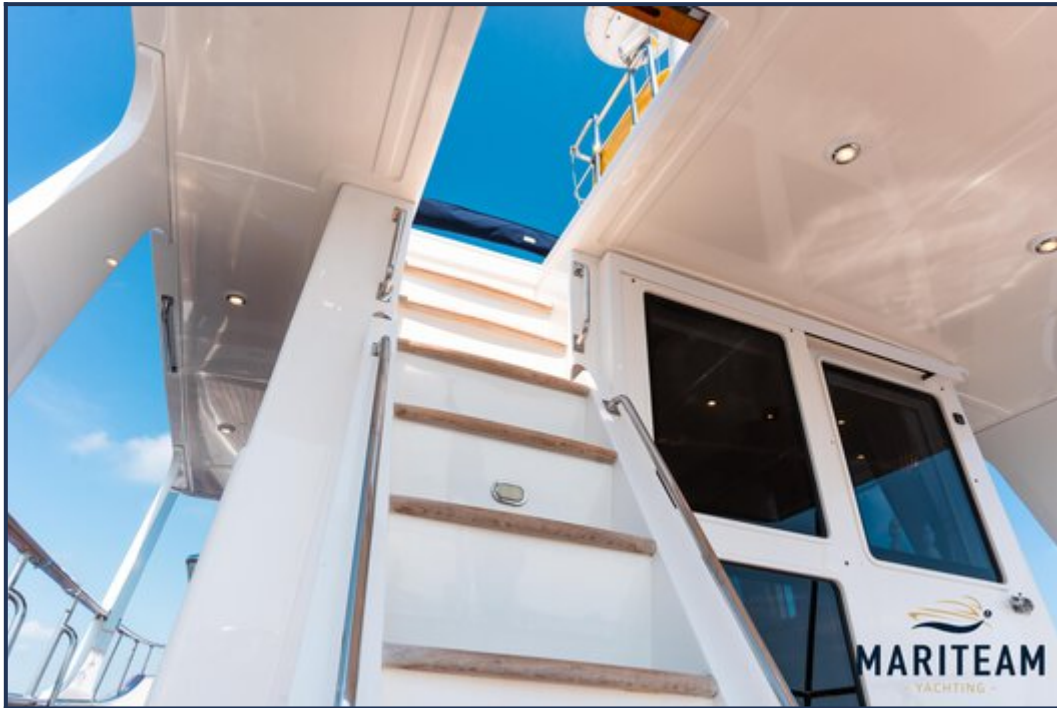










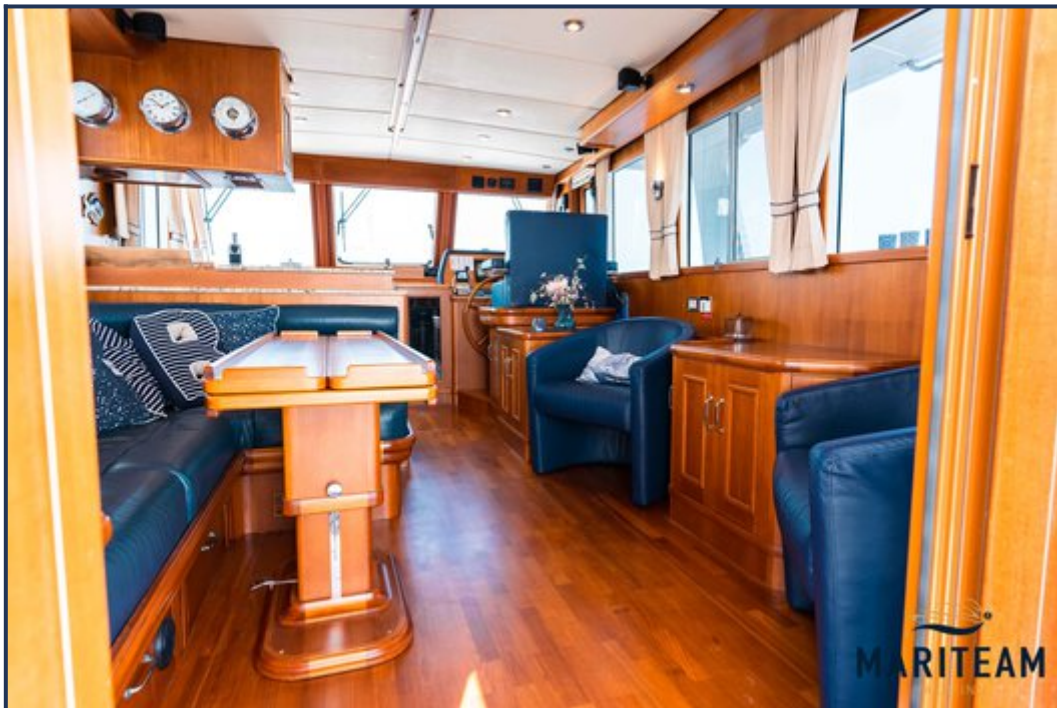








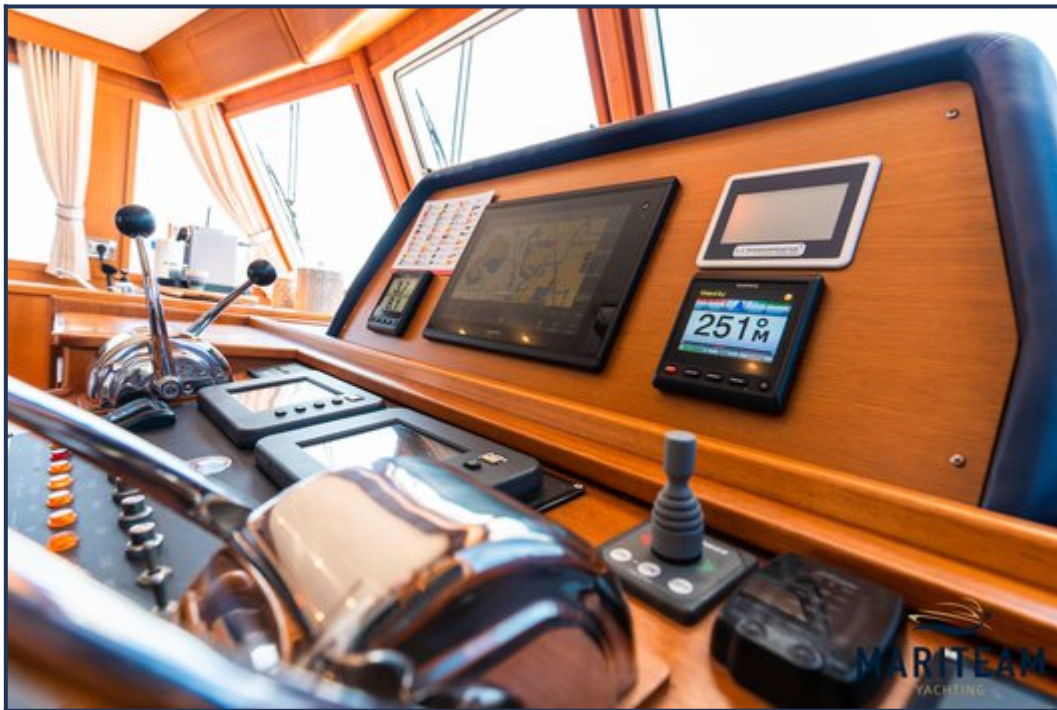


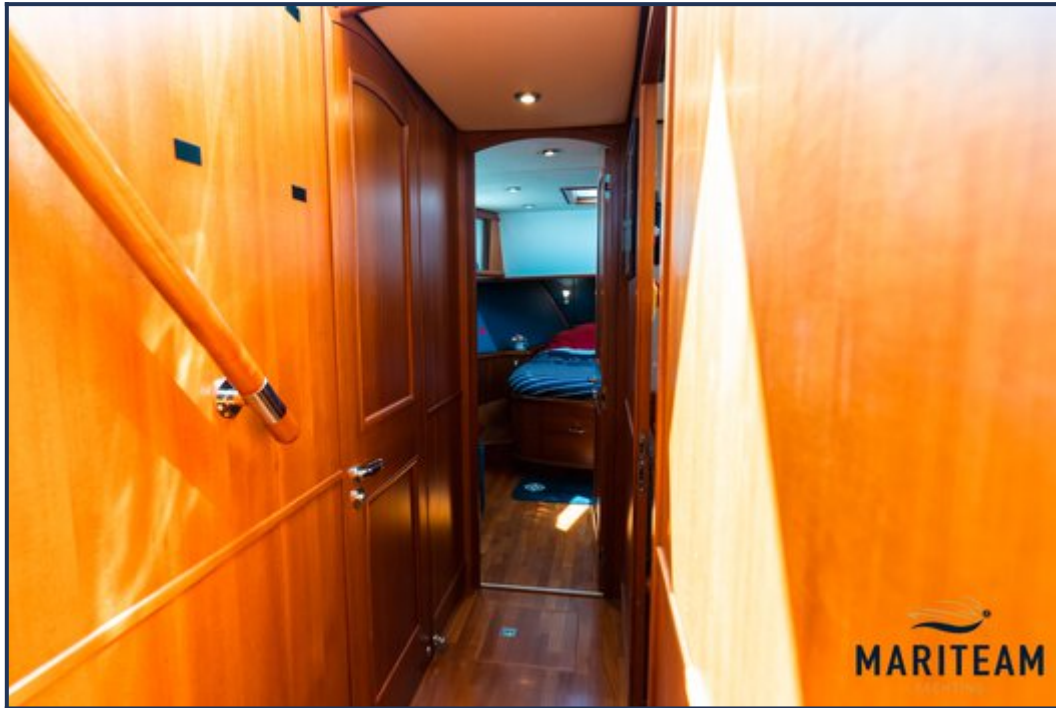






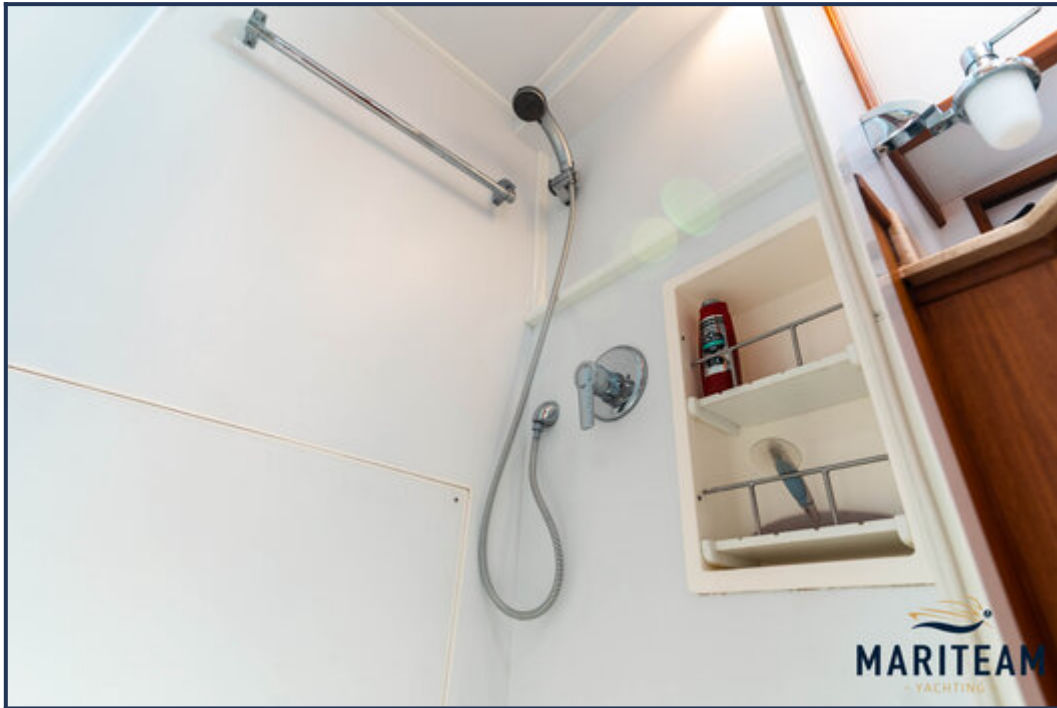


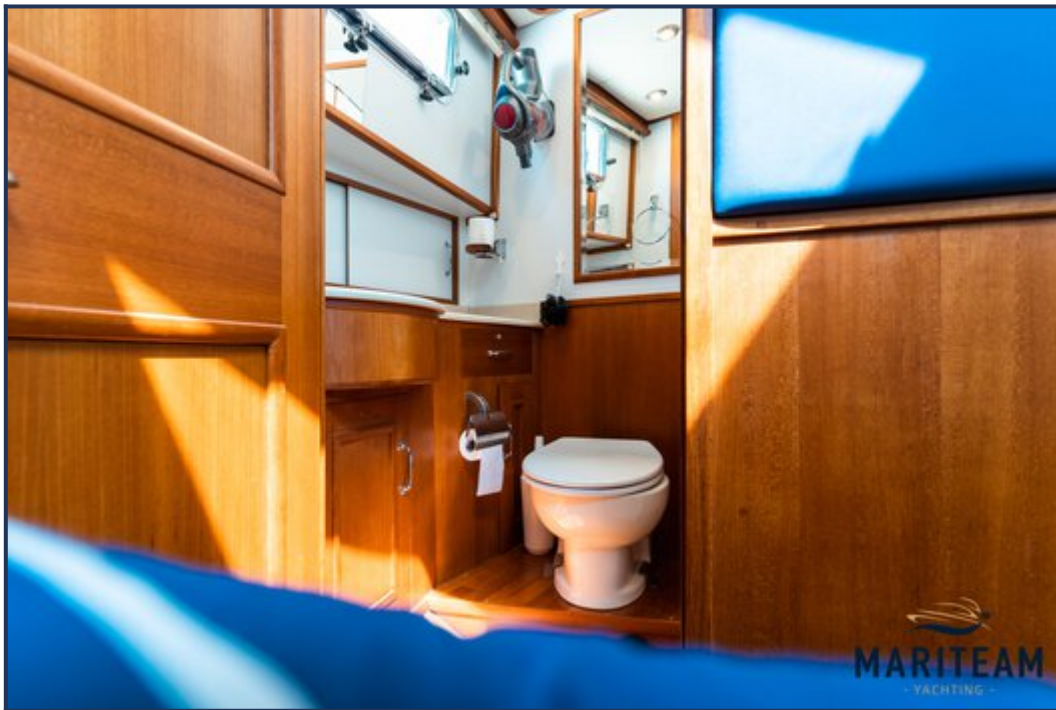


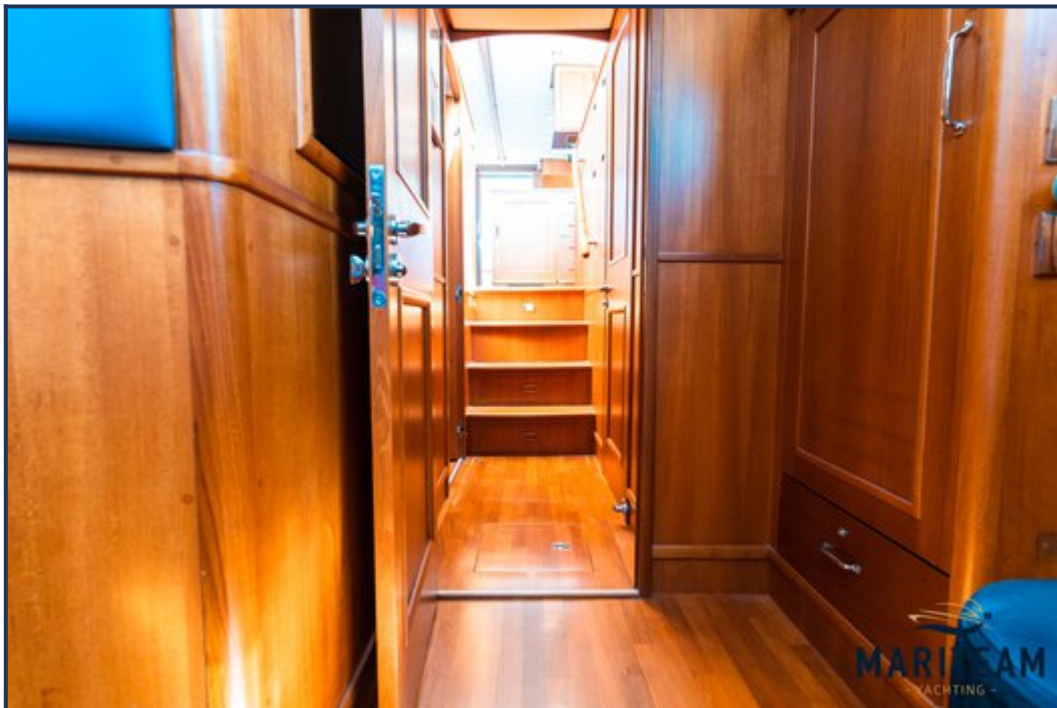
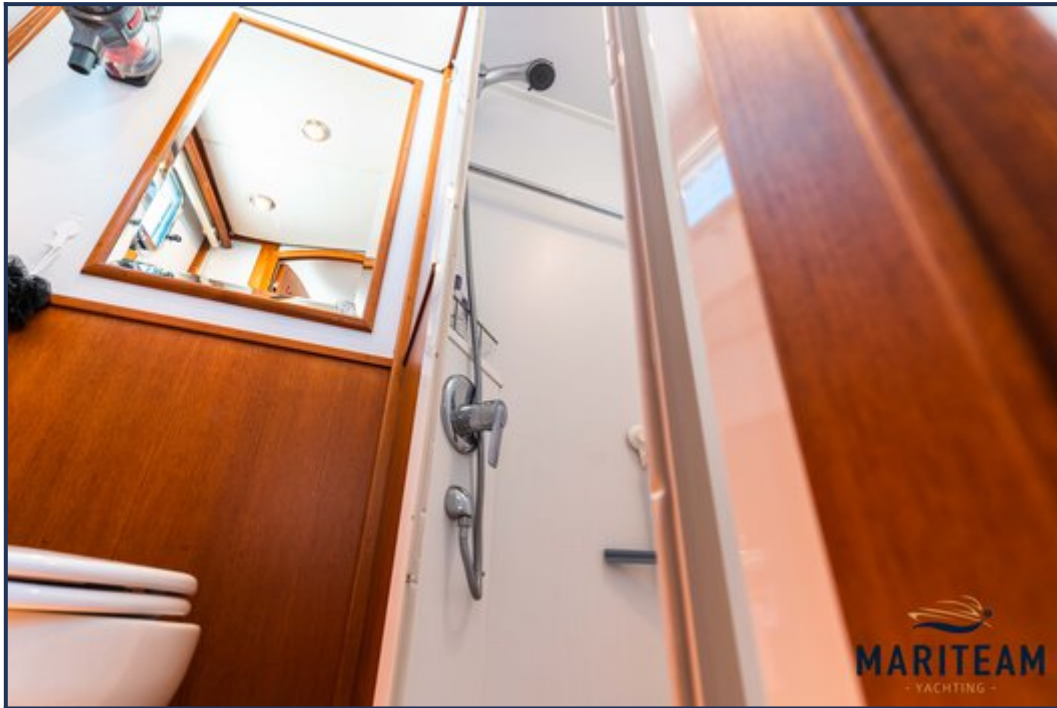










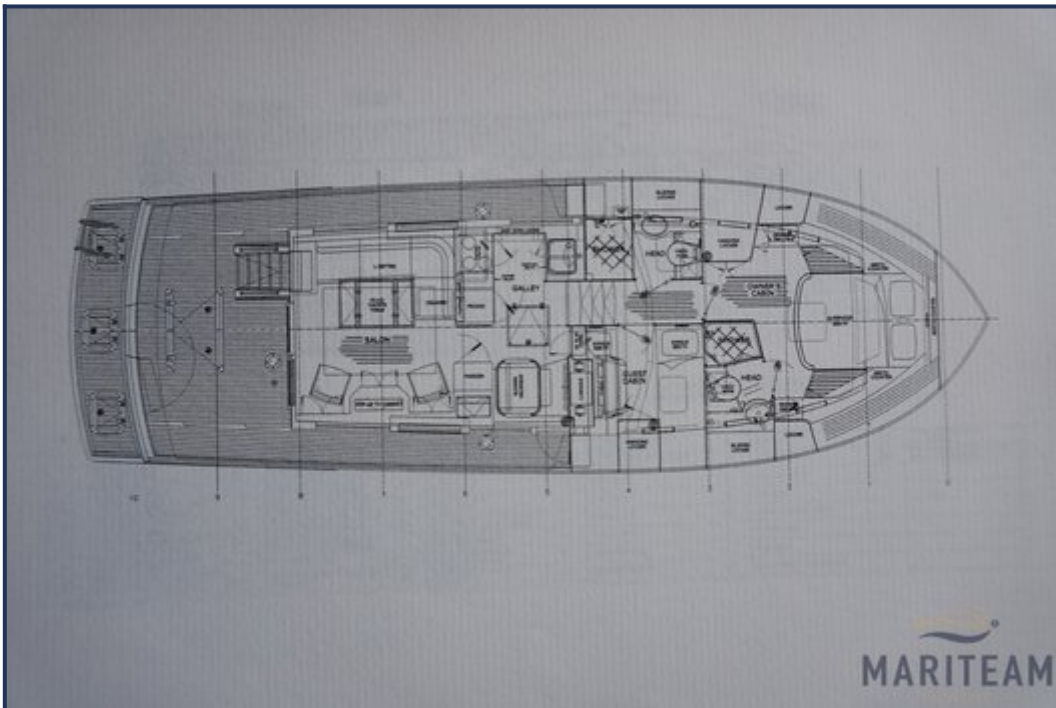




















These particulars are given in good faith as supplied but cannot be guaranteed and cannot be used for contracts.