



## Grand Banks 42 Classic 'VICTORIA'

LOA (m):	13.17 m
Beam (m):	4.29 m
Draft (m):	1.27 m
Shipyard:	American Marine Limited Singapore
Year built:	1991
Engines:	2x 210hp Caterpillar
Cabins:	2
Homeport:	Fréjus, France, Birth available
Price:	€ 229,000

The Grand Banks 42 classic 'VICTORIA', the well-known and timeless design of the classic line combined with the, according to many, the ideal length of just over 13 meters. Good for traveling as a couple or with family and friends. Inside the 'VICTORIA' there is a well-equipped galley. The captain of the 'VICTORIA' will also be well equipped behind the helm with two 210hp Caterpillars, a bow thruster and Raymarine navigation with autopilot. You will find Webasto hot air heating throughout the ship and air conditioning in the owner's cabin. The Grand Banks 42 classic 'VICTORIA' a great classic for weekends to weeks away with family and friends.



# MARITEAM

- YACHTING -

## MARITEAM YACHTING

Ceresweg 20-B, 8938 BG Leeuwarden 📍 The Netherlands 📞 Phone +31 (0) 582 889254  
[info@mariteamyachting.nl](mailto:info@mariteamyachting.nl) 📧 [www.mariteamyachting.nl](http://www.mariteamyachting.nl)

## Main specifications

Model:	42 Classic
LOA (m):	13.17 m
Beam (m):	4.29 m
Draft (m):	1.27 m
Year:	1991
Hull Material:	GRP
Cabins:	2
Sleeping places:	2
Number of main engine(s):	2
Power of main engine(s) (hp):	210
Brand of main engine(s):	Caterpillar
Price:	€ 229,000
VAT status:	EU Paid
Draft (m):	1.27
Year launched:	1991

## General

Name :	VICRORIA
Shipyard:	American Marine Limited Singapore
Type:	42 classic
Length overall (m):	13.17
Length waterline (m):	12.53
Beam (m):	4.29
Air draft (m):	Top of mast from DWL: 6.86 / Top of windshield from DWL: 3.99
Year built:	1991

Displacement (t):	15.6
Hull material:	GRP
Deck material:	GRP
Superstructure material:	GRP
Deck finish:	Teak
Window material:	Single Glass, Luxaflex & screens
Fuel tank (Litre and material):	2270 Liter
Freshwater Tank (Liter and material):	1000 Liter
Black water tank (Litre and material):	80 liter

## Accommodation

Stove:	Caremic coockingtop
Refrigerator:	1x with freezer compartment
Freezer:	Freezer compartment in fridge
Interior finish:	Teak
Dish washer:	Siemens Auto 3in1
Washing machine/Dryer:	1x Wachingmachine
Double bed:	2x
Cabins:	2
Toilets:	2x electric
Showers:	2 showers
Combi oven/microwave:	Siemens combi

## Machinery

Port engine (Brand, type, hp, gearbox):	Caterpillar 3208NA 210hp
---	--------------------------

Main engines control (Brand and type):	Morse 4 handle
Drive (Shaft, IPS, Jet):	Propeller shaft
Star engine (Brand, type, hp, gearbox):	Caterpillar 3208NA 210hp
Generator (Brand, type, Kw):	Onan 6.5 MDKDP 26501C
Bowthruster (Brand, type, elec/hyd):	present
Electrical bilge pump:	Rule 2000 GPH
Manual bilge pump:	present
Water pressure pump (Brand, model):	present
Hot water system:	Boiler
Heating system (brand, model, type):	Webasto
Airconditioning system (Brand, model):	Present in owners cabin
Macerator pump:	present
Steering system:	Mechanical

## Electrical system

House battery (Number of battery,type, total Amp, year):	3x
Start battery (Number of battery,type, total Amp, year):	2x
Bowthruster battery (Number of battery,type, total Amp, year):	1x
DC system (V) AC system (V):	12V / 220V

## Safety system

Life raft:	6 person
------------	----------

## Navigation system

Helm position one:	Saloon
Compass:	present
Gps plotter:	Raymarine
Radar screen:	Raymarine
Radar :	Raymarine
Wind meter :	Raymarine
VHF:	Handheld VHF Present
Autopilot:	Raymarine
Rudder indicator:	Analog
Helm position two:	Flybridge

## Equipment

Gangway:	Foldable gangway
Window ventilation:	Slide and tilt windows
Horn:	Fiam MT-NA







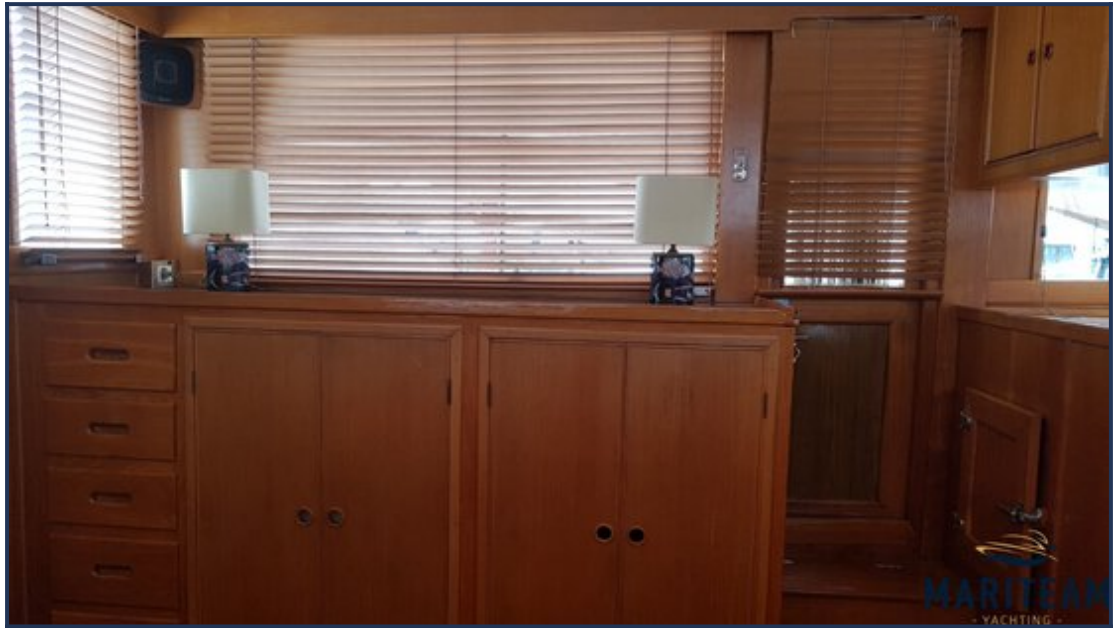


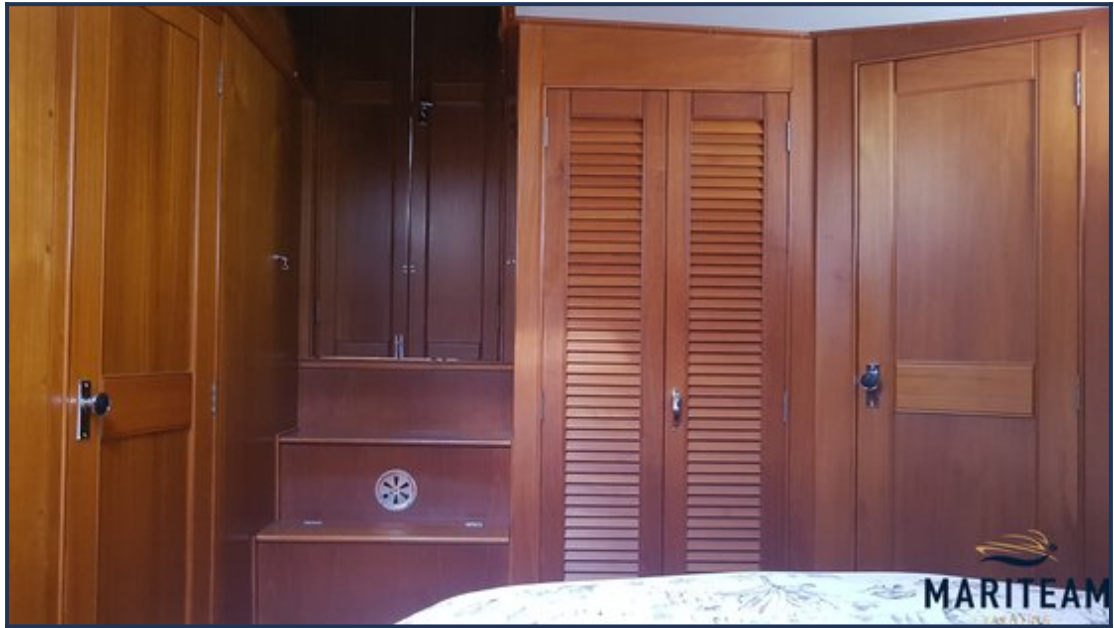






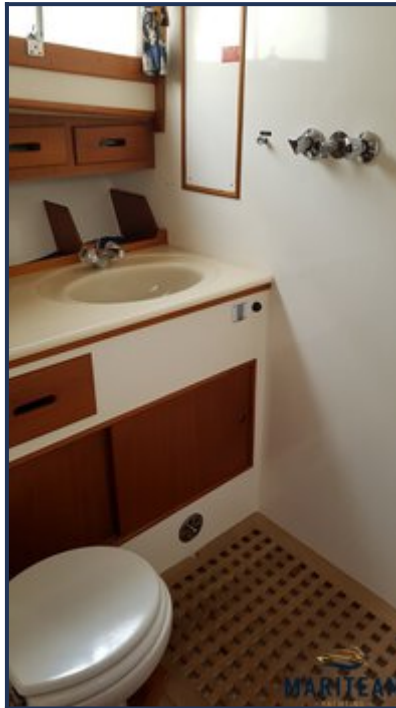
















*These particulars are given in good faith as supplied but cannot be guaranteed and cannot be used for contracts.*