



Grand Banks 32 Classic 'RAINBOW'

LOA (m):	9.73 m
Beam (m):	3.60 m
Draft (m):	1.14 m
Shipyard:	Grand Banks Yachts
Year built:	1979
Engines:	2x 59hp Nanni
Cabins:	1
Homeport:	Heeg, Netherlands
Price:	€ (not set)

Introducing the unique Grand Banks 32 Classic named 'RAINBOW,' featuring a rare configuration of two Nanni 59 hp diesel engines. Upon entering, you'll be welcomed by the salon with a spacious corner bench opposite a three-seater bench. Further ahead is the galley, equipped with a refrigerator with freezer compartment, a three-burner gas stove, and a Nawa oven. In the bow, you'll find the owner's cabin with a double V-shaped bed and an en-suite bathroom with a shower.

Main specifications

Model:	32 Classic
LOA (m):	9.73 m
Beam (m):	3.60 m
Draft (m):	1.14 m
Year:	1979
Hull Material:	GRP
Cabins:	1
Sleeping places:	2
Number of main engine(s):	2
Power of main engine(s) (hp):	59
Brand of main engine(s):	Nanni
Price:	€ (not set)
VAT status:	exempted of VAT
Year launched:	1979

General

Name :	Rainbow
Shipyard:	Grand Banks Yachts
Type:	32 Classic
Length overall (m):	9.73 Meter
Length waterline (m):	9.37 Meter
Year built:	1979
Hull material:	GRP
Deck material:	GRP
Superstructure material:	GRP
Deck finish:	Teak

Window material:	Single safety glass
Fuel tank (Litre and material):	2x 475 Liter
Freshwater Tank (Liter and material):	400 Liter
Maximum speed (Kn):	10 knots
Cruising speed (Kn):	5 to 6 Knots

Accommodation

Stove:	3-Burner, gas
Oven:	Nawa
Refrigerator:	present
Freezer:	Freezer compartment in fridge
Interior finish:	Mahogany / Teak
Single berths:	1x Sleeping couch
Double bed:	1 Twoperson V-bed
Cabins:	1 Cabin
Toilets:	1x toilet
Showers:	1x Shower

Machinery

Port engine (Brand, type, hp, gearbox):	Nanni model N.4.65 59pk 2019
Main engines control (Brand and type):	Morse 4 handel
Drive (Shaft, IPS, Jet):	Propeller shaft
Prop (Number of blades, material):	4 blads
Star engine (Brand, type, hp, gearbox):	Nanni model N.4.65 59pk 2019
Electrical bilge pump:	Rule 360 GHP

Manual bilge pump:	Present, not connected
Water pressure pump (Brand, model):	Jabsco
Hot water system:	Boiler
Steering system:	Mechanic
Engine hours engine 1:	Circa 533 Hours
Engine hours engine 2:	Circa 533 Hours

Electrical system

House battery (Number of battery,type, total Amp, year):	3x SMF Marine 12V-220Ah
Start battery (Number of battery,type, total Amp, year):	Power Boost 12V 154Amp
Inverter (V/W/Amp):	Victron Energy 12V 220Amp
Battery charger (V/W/Amp):	American Marine Input A.C. 120V-220V-10Amp Output D.C. 40Amp Max 12V Battery

Safety system

High water alarm:	Bilge Water Alarm
-------------------	-------------------

Navigation system

Helm position one:	Saloon
Compass:	present
Radar :	Seascan
Depth meter:	Seafarer 4
VHF:	ITT Marine STR 12

Autopilot:	Autohelm 5000
Helm position two:	Flybrdige

Equipment

Anchor:	Danforth Anker
Windlass:	Stainless steel
Window ventilation:	Slide mechanism
Horn:	present































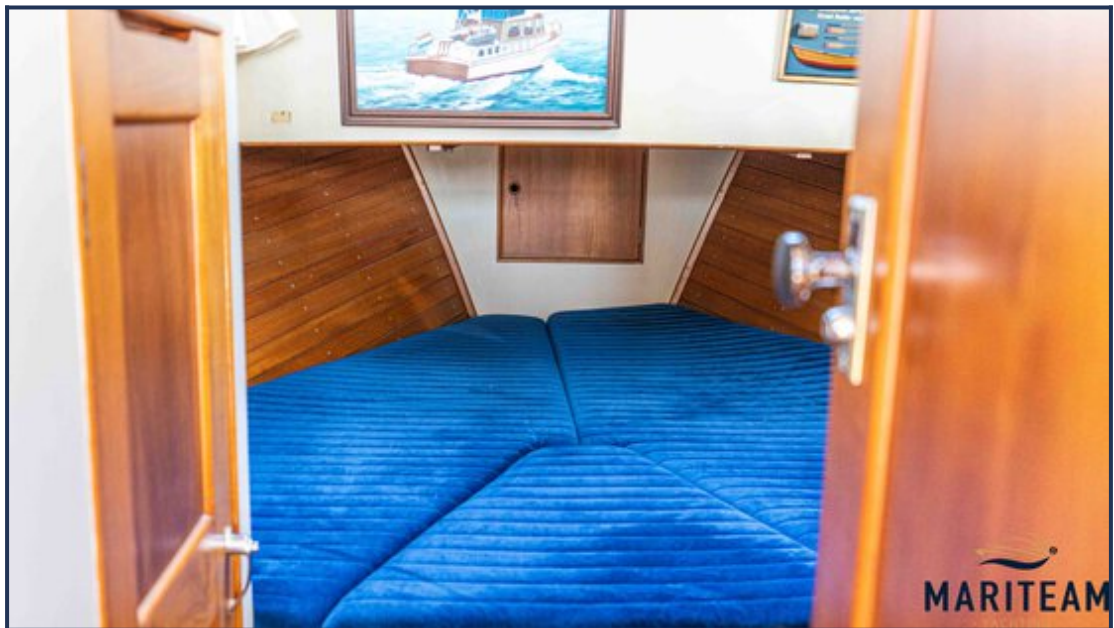


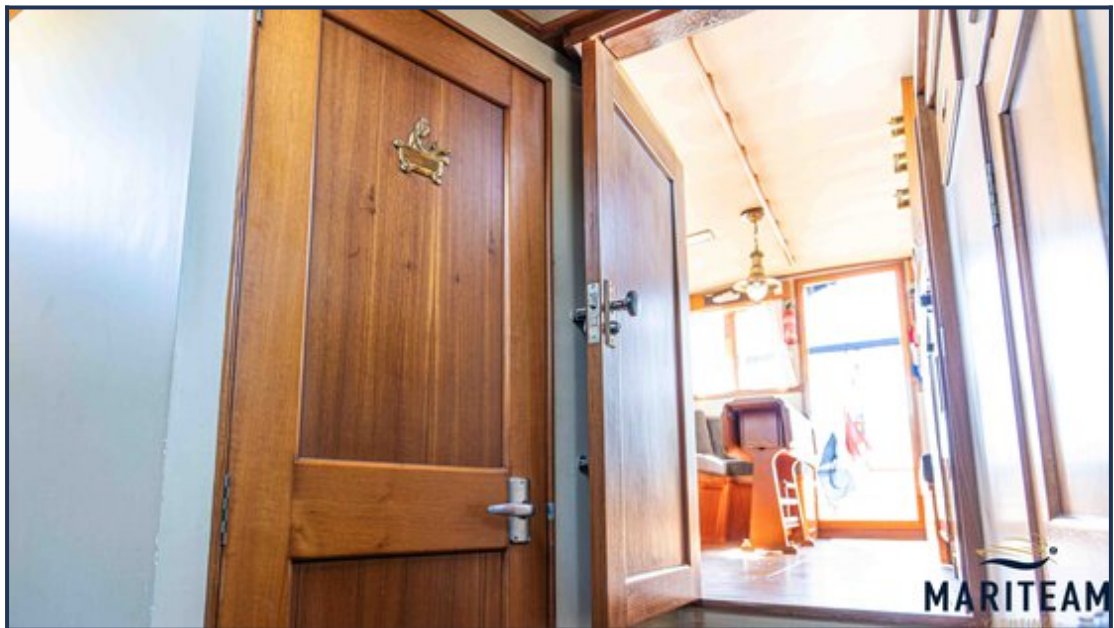




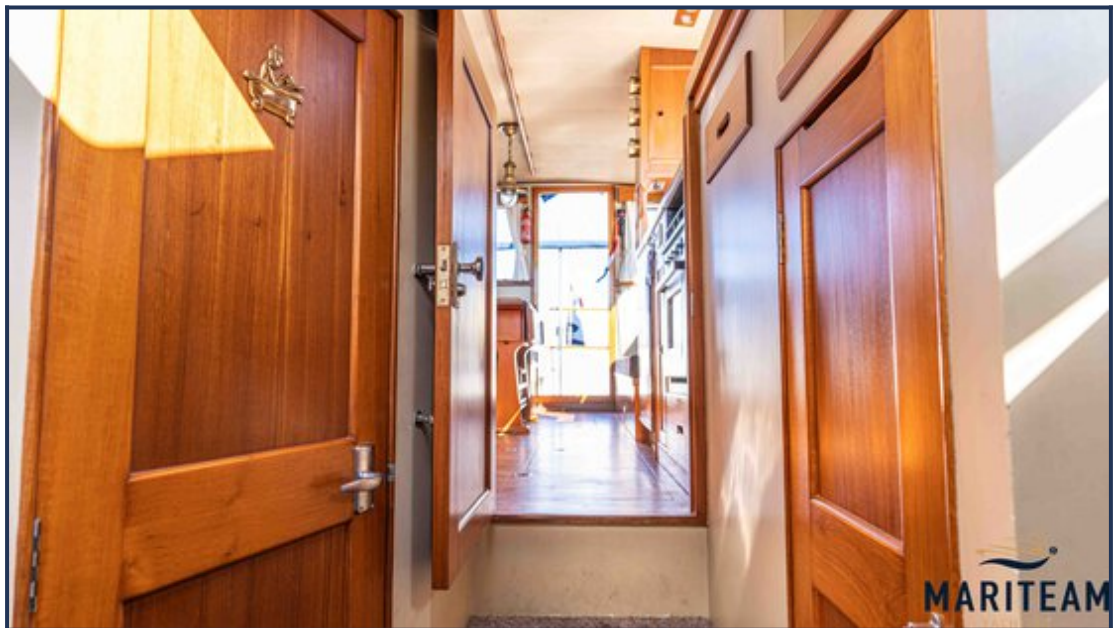






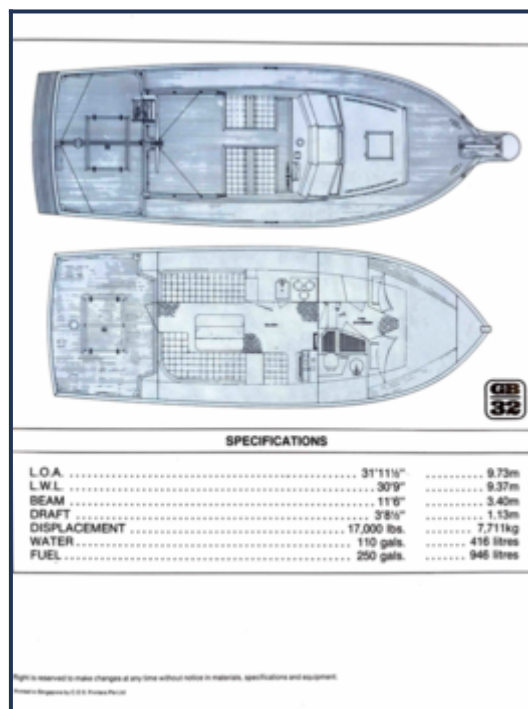


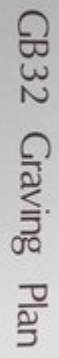












GB 32
GRAVING PLAN

These particulars are given in good faith as supplied but cannot be guaranteed and cannot be used for contracts.