



Grand Banks 46 Motoryacht 'GRAND FINAL'

LOA (m):	15.85 m
Beam (m):	4.50 m
Draft (m):	1.33 m
Engines:	2x 375hp Caterpillar
Cabins:	2
Homeport:	Germany
Price:	€ 275,000

The 1997 Grand Banks 46 motor yacht "Grand Final" is a highly regarded vessel known for its classic style, luxurious amenities, and exceptional seaworthiness. With ample space and comfort for extended cruising, it features a spacious interior, exquisite teak finish, and a flybridge with stunning views. Powered by two 375 HP Caterpillar diesel engines, it offers a comfortable cruising speed of 10 knots and a top speed of 18 knots. The "Grand Final" is a timeless classic that combines luxury, performance, and lasting value.

Main specifications

Model:	46 Motoryacht
LOA (m):	15.85 m
Beam (m):	4.50 m
Draft (m):	1.33 m
Year:	1997
Hull Material:	GRP
Cabins:	2
Sleeping places:	4
Number of main engine(s):	2
Power of main engine(s) (hp):	375
Brand of main engine(s):	Caterpillar
Price:	€ 275,000
VAT status:	EU Paid
HIN number:	GNDF0194F797

General

Name :	Grand Final
Shipyard:	Grand Banks Yachts
Air draft (m):	4.44
CE-category:	B
Displacement (t):	17
Hull material:	GRP
Deck material:	GRP
Superstructure material:	GRP
Deck finish:	Teak
Window material:	Single safety glass

Fuel tank (Litre and material):	2270, Steel
Freshwater Tank (Liter and material):	1098, aluminium
Black water tank (Litre and material):	150, Aluminium
Antifouling (Year):	2023
Maximum speed (Kn):	18
Cruising speed (Kn):	10

Accommodation

Stove:	Electric, 4 pits
Refrigerator:	2 x
Freezer:	1 x
Dish washer:	Miele
Washing machine:	Siemens
Single berths:	2 x
Double bed:	1 x
Cabins:	2 x
Toilets:	2 x
Showers:	2 x

Machinery

Port engine (Brand, type, hp, gearbox):	Caterpillar, 3208TA, 375PK
Engine hours port engine:	1423
Star engine (Brand, type, hp, gearbox):	Caterpillar 3208TA, 375pk
Engine hours starboard engine:	1423
Main engines control (Brand and type):	Morse

Drive (Shaft, IPS, Jet):	Drive shaft
Shaft lubrication:	Waterlubricated
Prop (Number of blades, material):	4, bronze
Rope cutter on propulsion:	1 per drive shaft
Generator (Brand, type, Kw):	Onan, 12Kw
Generator hours:	463
Bowthruster (Brand, type, elec/hyd):	Hydraulic
Heating system (brand, model, type):	aberspächer
Airconditioning system (Brand, model):	Marinair Air conditioning reverse cycle heating
Stabilizer system:	Koop Nautic SeaRocq Stabilizers
Deckwash:	1 x saltwater, 1 x freshwater

Electrical system

House battery (Number of battery,type, total Amp, year):	4 x 250 Ah AGM
DC system (V) AC system (V):	12V / 220 V
Inverter (V/W/Amp):	Victron Inverter 12v/1600w

Navigation system

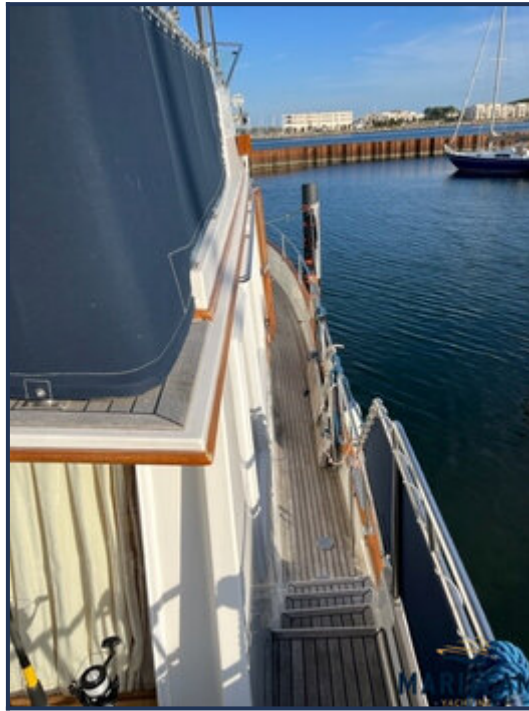
Compass:	Ritchie
Gps plotter:	Simrad NSS12
Radar :	Digital radar with open scanner
Depth meter:	Robertson IS11
Log:	Robertson IS11
VHF:	Simrad RS25
AIS:	Ja

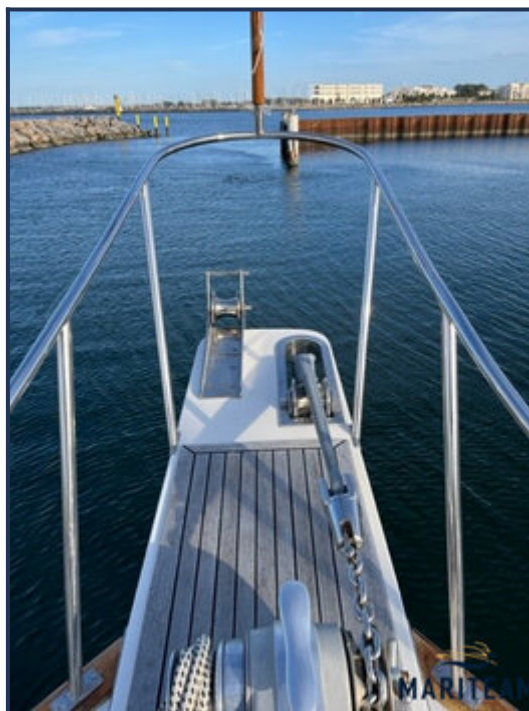
Autopilot:	Robertson AP20 Autopilot
------------	--------------------------

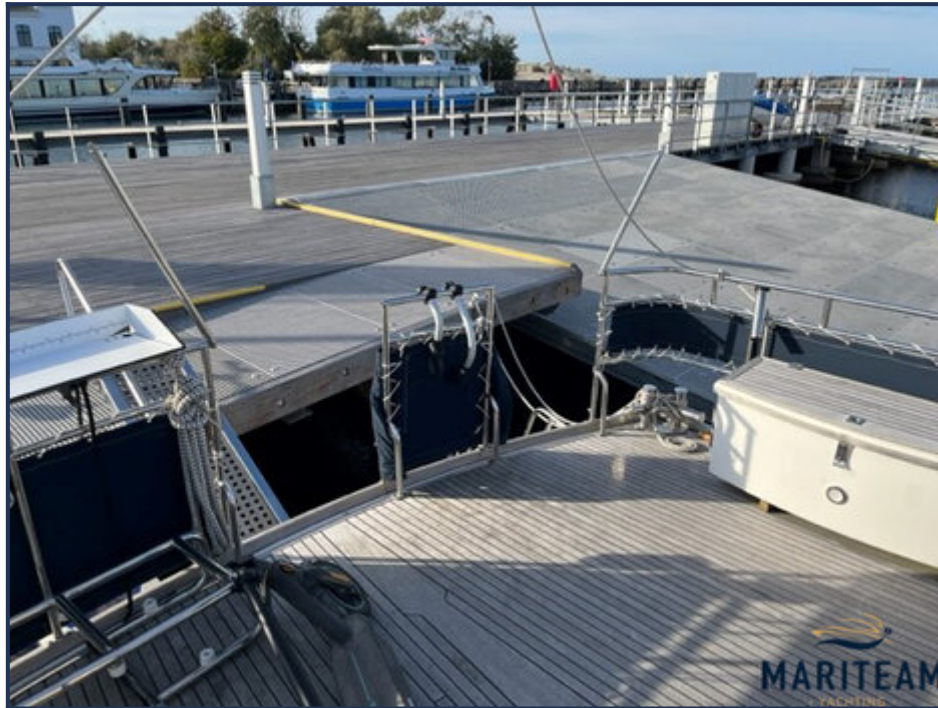
Equipment

Anchor:	1 x
Gangway:	1 x Hydraulic

















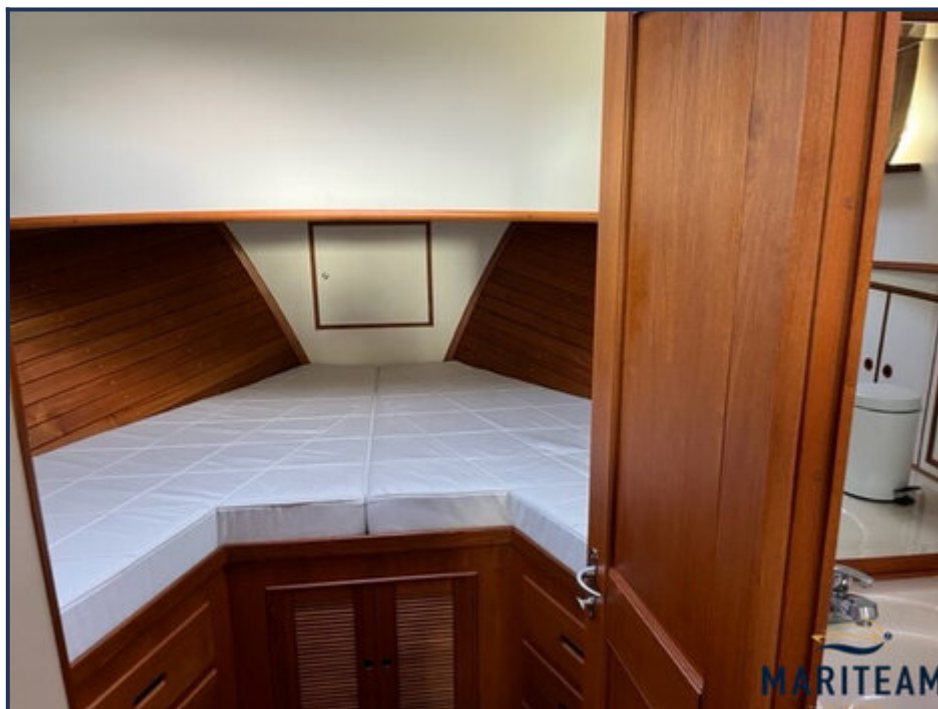




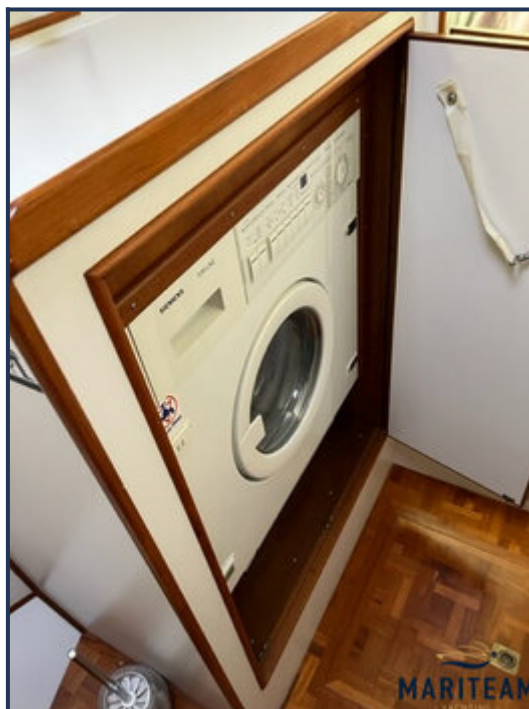






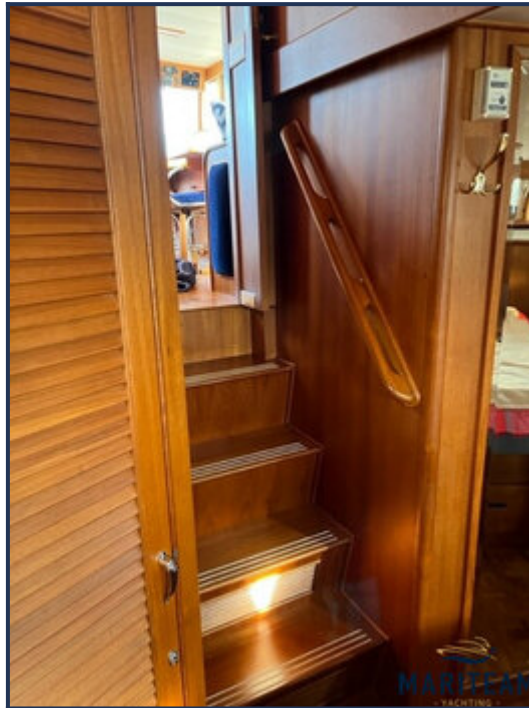


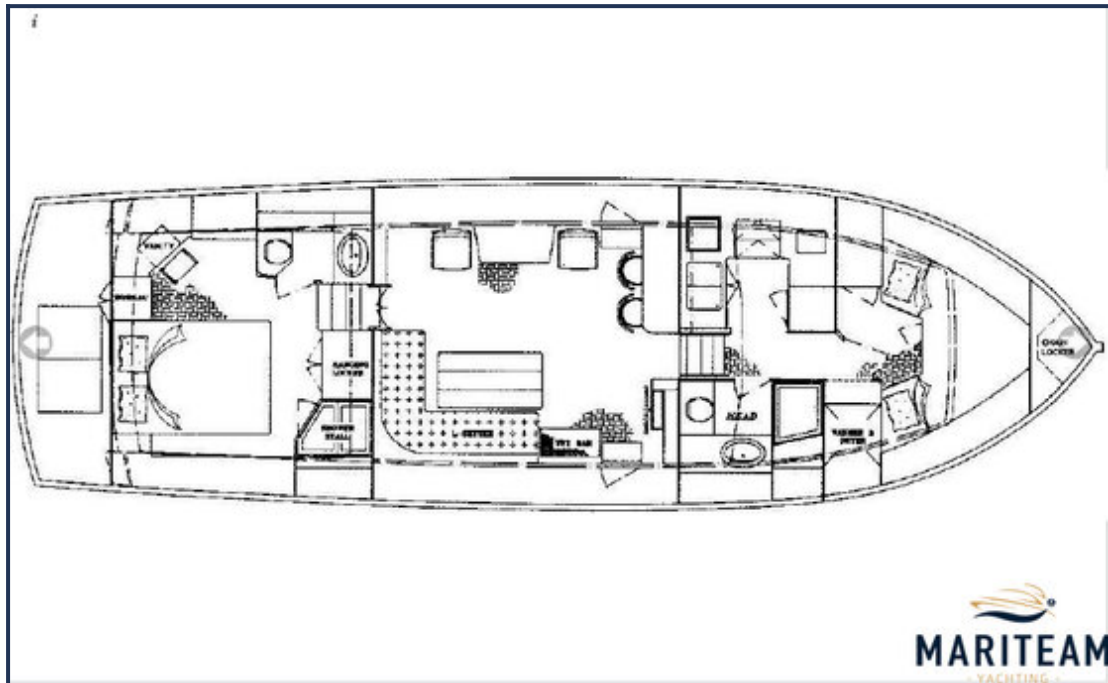












These particulars are given in good faith as supplied but cannot be guaranteed and cannot be used for contracts.