



Grand Banks 46 Classic 'ZEELEEUEW'

LOA (m):	14.20 m
Beam (m):	4.50 m
Draft (m):	1.28 m
Engines:	2x 357hp Volvo
Cabins:	2
Homeport:	Zeeland
Price:	€ (not set)

The Grand Banks 46 Classic 'Zeeleeuw,' built in 1987, is a timeless and iconic motor yacht that still embodies the classic charm of Grand Banks yachts. With its seaworthiness and graceful lines, 'Sealion' continues to capture the hearts of water sports enthusiasts to this day. Featuring a spacious salon, two cabins, each with its own bathroom, and powered by two 357hp Volvo Penta engines, 'Zeeleeuw' appears to excel in every aspect.

Main specifications

Model:	46 Classic
LOA (m):	14.20 m
Beam (m):	4.50 m
Draft (m):	1.28 m
Year:	1987
Hull Material:	GRP
Cabins:	2
Sleeping places:	4
Number of main engine(s):	2
Power of main engine(s) (hp):	357
Brand of main engine(s):	Volvo
Price:	€ (not set)
VAT status:	EU Paid
HIN number:	GNDF0019B787

General

Name :	Zeeleeuw
Shipyard:	Grand Banks Yachts
Displacement (t):	23
Hull material:	GRP
Deck material:	GRP
Superstructure material:	GRP
Deck finish:	Teak
Window material:	Single safety glass
Fuel tank (Litre and material):	2271 Polyester
Freshwater Tank (Liter and material):	984 aluminium

Black water tank (Litre and material):	300L
Antifouling (Year):	2023
Maximum speed (Kn):	15
Cruising speed (Kn):	8

Accommodation

Stove:	Schott Ceramic 4 ring
Microwave:	Panasonic
Oven:	Schott
Refrigerator:	2x Indel B
Freezer:	Freezer, refrigerator compartment
Interior finish:	Teak
Dish washer:	1x
Dryer:	1x
Single berths:	2x
Double bed:	1x
Cabins:	2
Toilets:	2x elektrik
Showers:	2x

Machinery

Port engine (Brand, type, hp, gearbox):	Volvo TAMD71A, 357PK
Engine hours port engine:	+/-4400
Star engine (Brand, type, hp, gearbox):	Volvo TAMD71A, 357PK
Engine hours starboard engine:	+/-4400

Main engines control (Brand and type):	Morse
Drive (Shaft, IPS, Jet):	Drive shaft
Shaft lubrication:	Water
Prop (Number of blades, material):	3 blade
Emergency engine (Brand, type, hp, gearbox):	1x
Generator (Brand, type, Kw):	Fisher Panda 12Kw
Generator hours:	622
Bowthruster (Brand, type, elec/hyd):	Hydraulic
Electrical bilge pump:	2x
Manual bilge pump:	1
Hot water system:	Boiler 78L
Heating system (brand, model, type):	Eberspächer
Trim system:	Bennet
Deckwash:	1x

Electrical system

House battery (Number of battery,type, total Amp, year):	4x 230 Ah
Start battery (Number of battery,type, total Amp, year):	2x 230A + Generator 180A
DC system (V) AC system (V):	12 V / 220 V
Inverter (V/W/Amp):	Mastervolt 100A
Battery charger (V/W/Amp):	Combi + start Mastervolt 15A

Safety system

High water alarm:	Bilge Alarm
-------------------	-------------

Navigation system

Compass:	Danforth
Gps plotter:	Raymarine RL80C
Radar :	Raymarine
Depth meter:	Raymarine ST80
Wind meter :	Raymarine
VHF:	Furuno
Autopilot:	Raymarine ST8001

Equipment

Anchor:	Yes
Windlass:	Yes
Tender crane:	Mast + Boom
Deck shower:	1x
Horn:	Yes





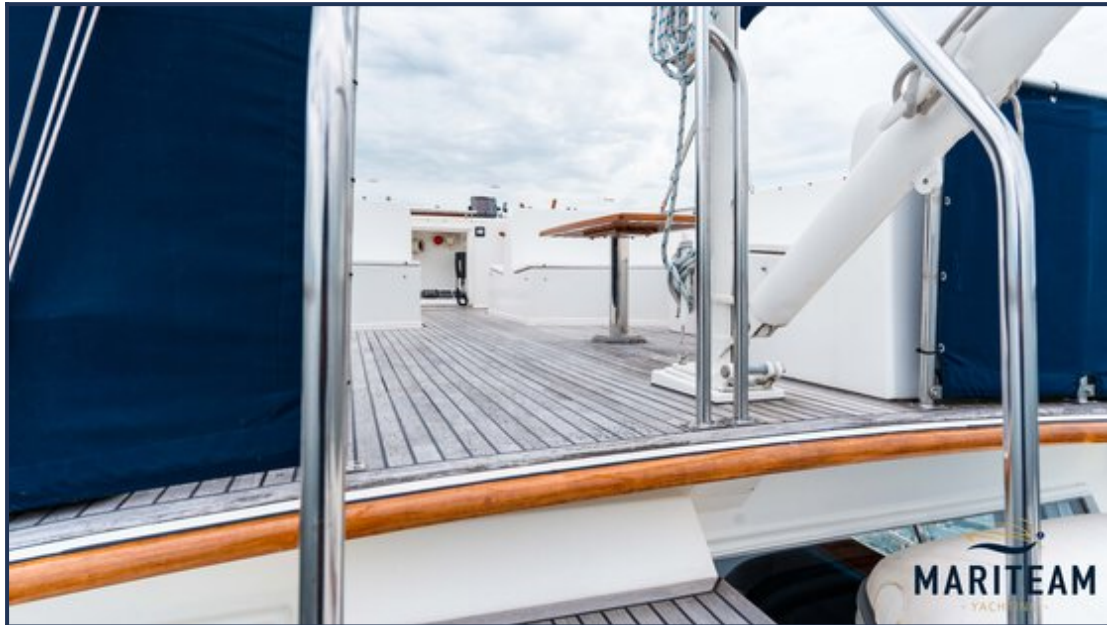


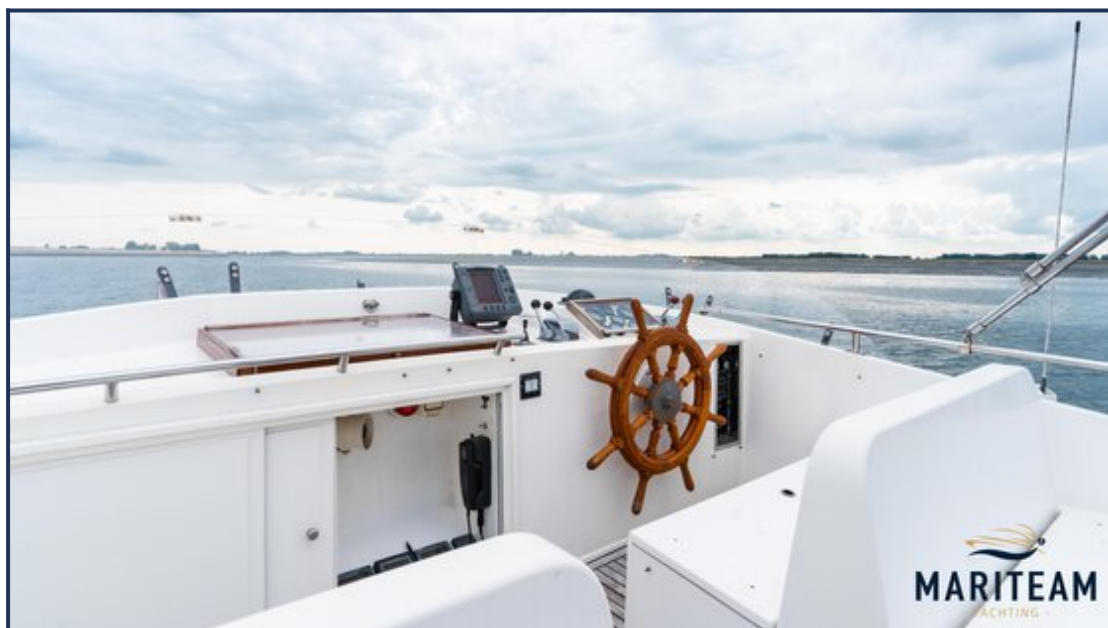
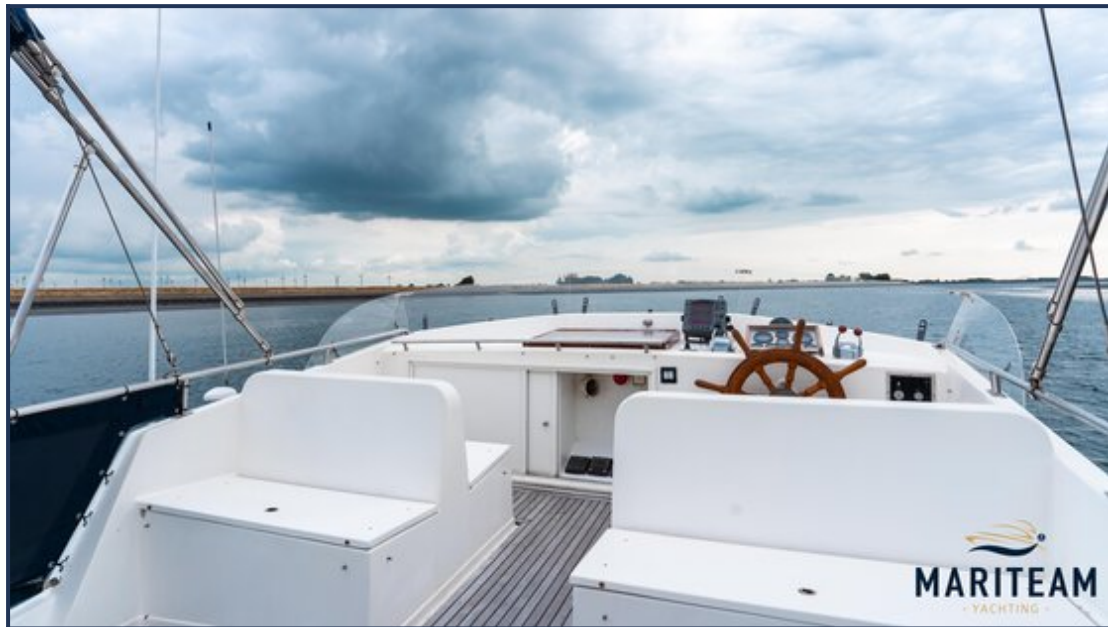








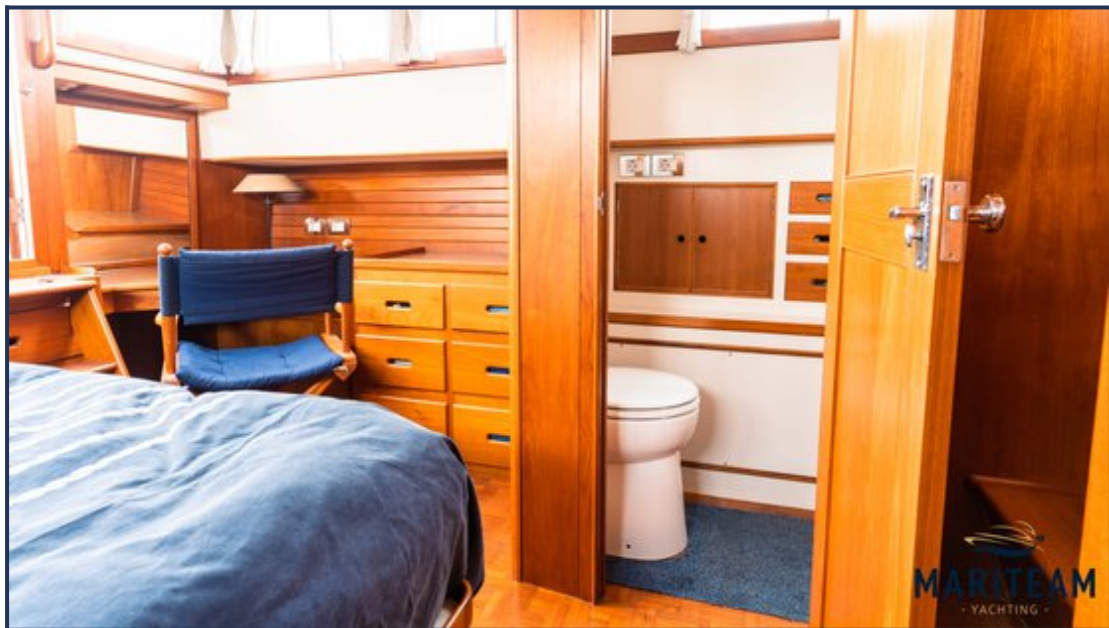


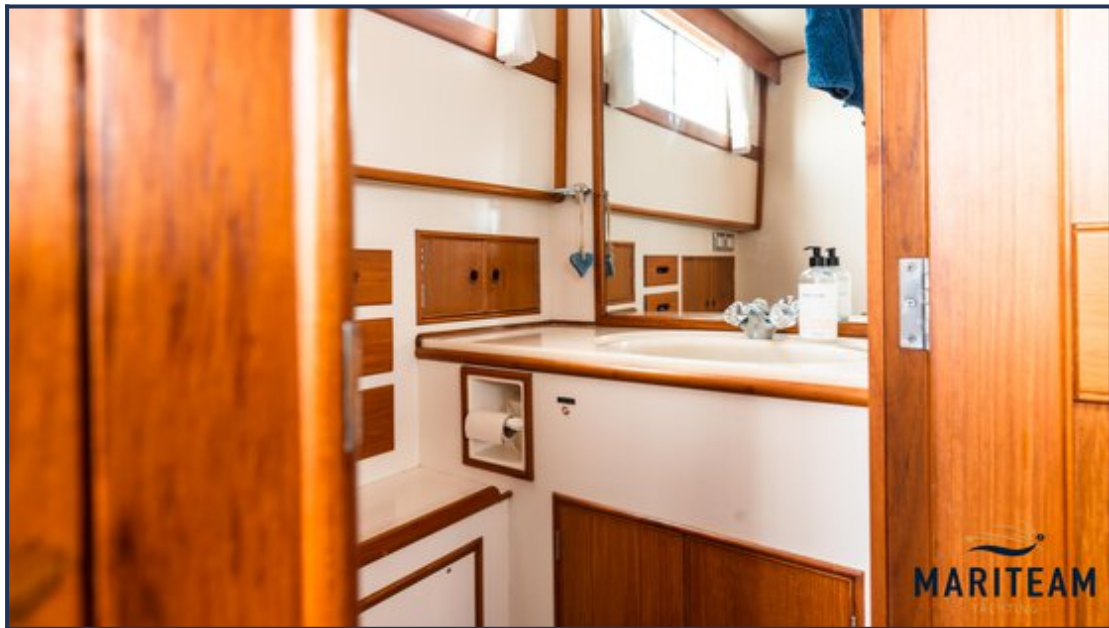




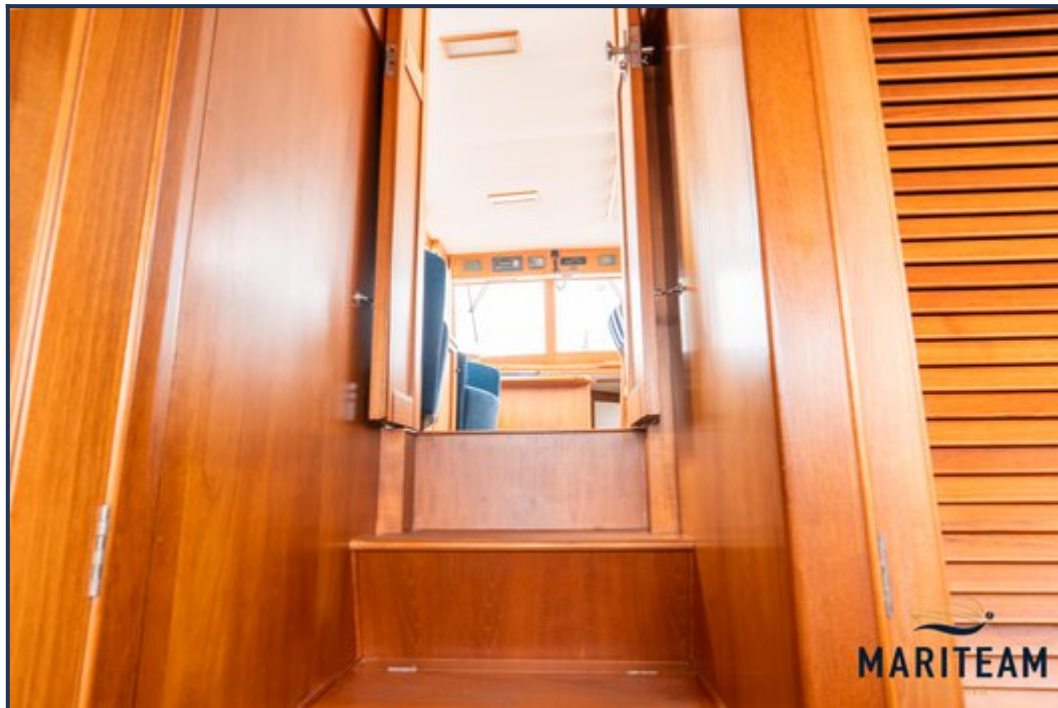




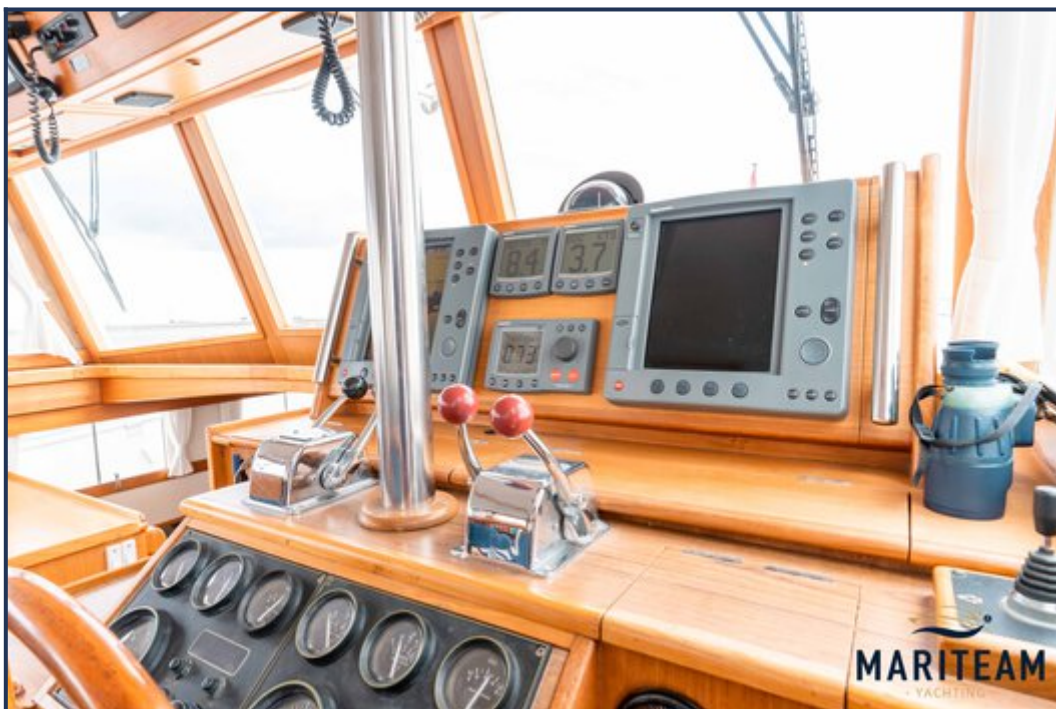
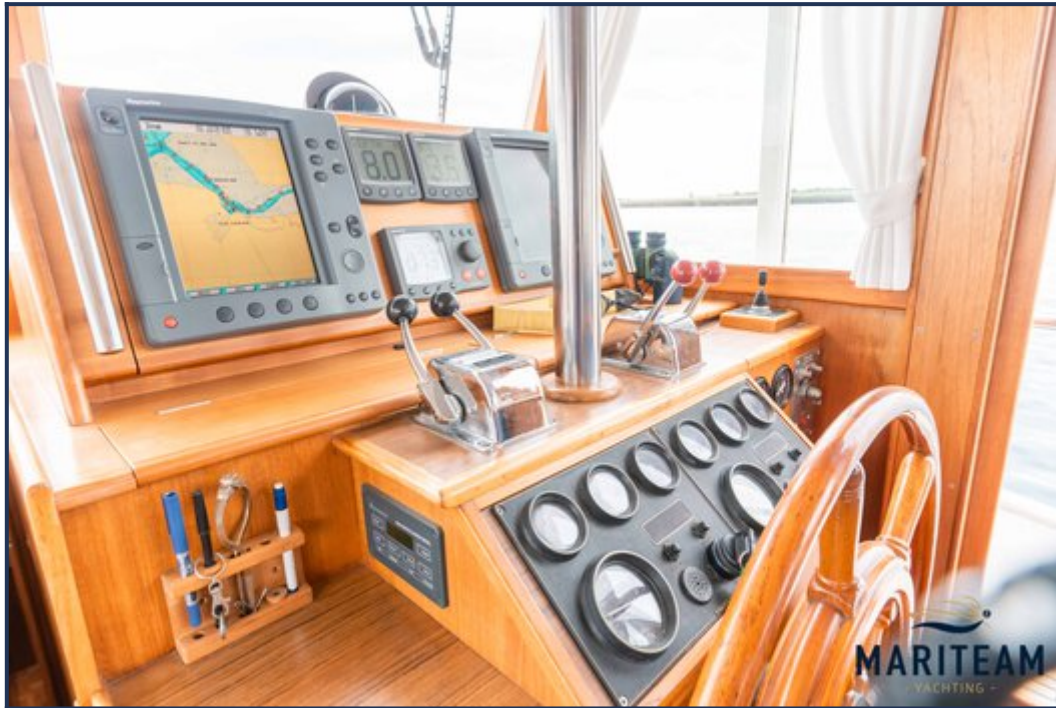


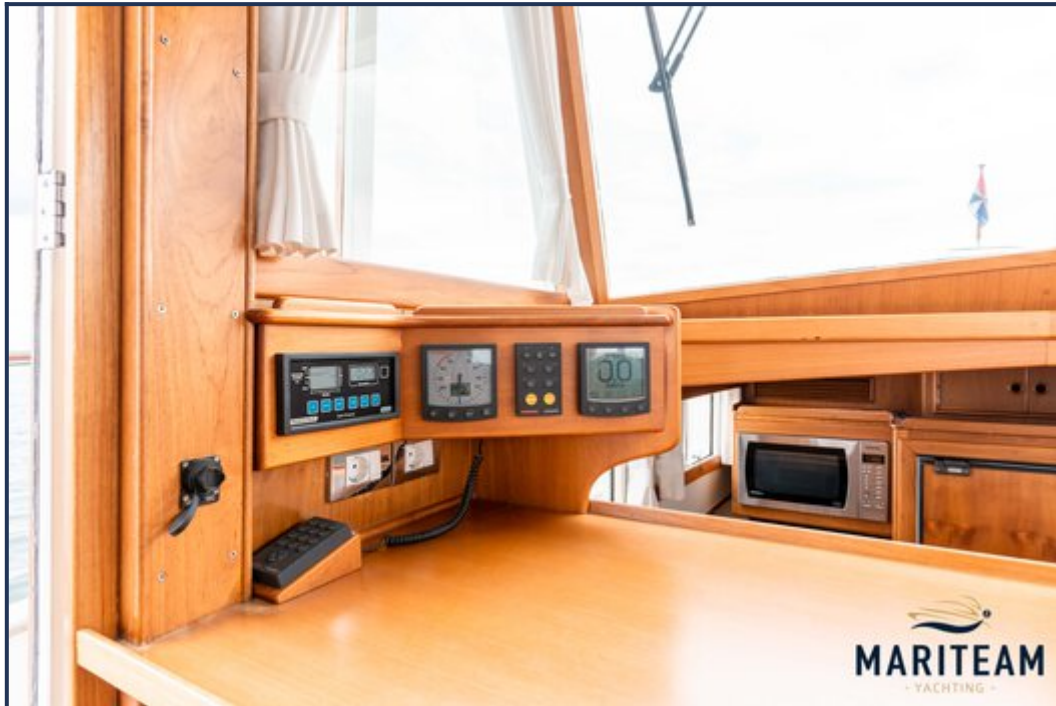








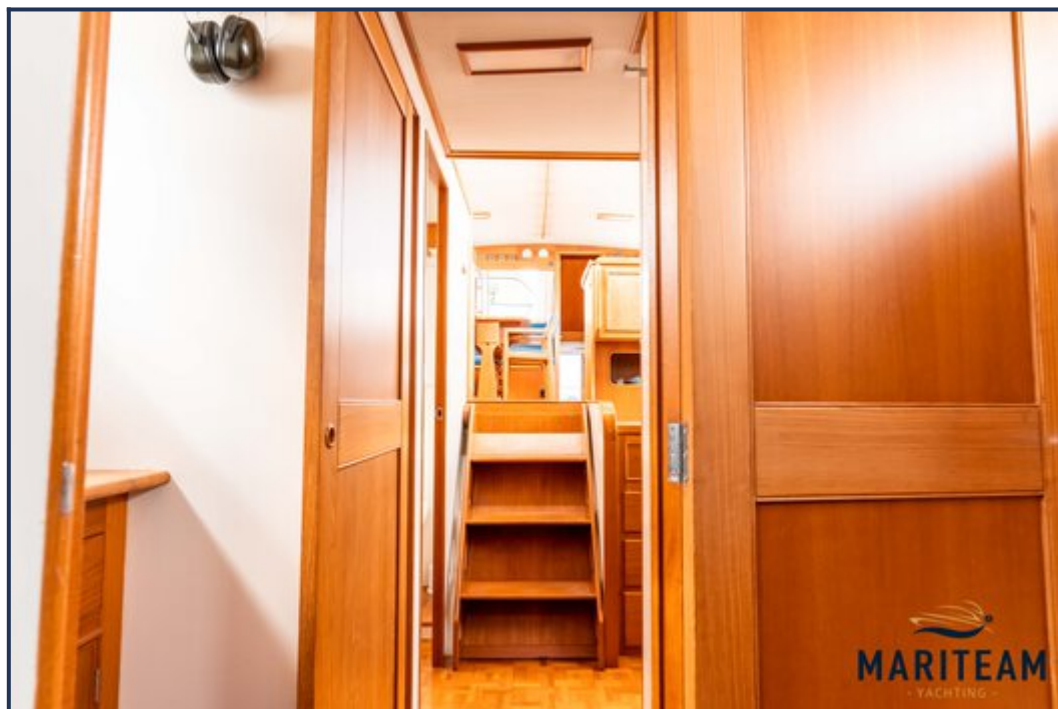
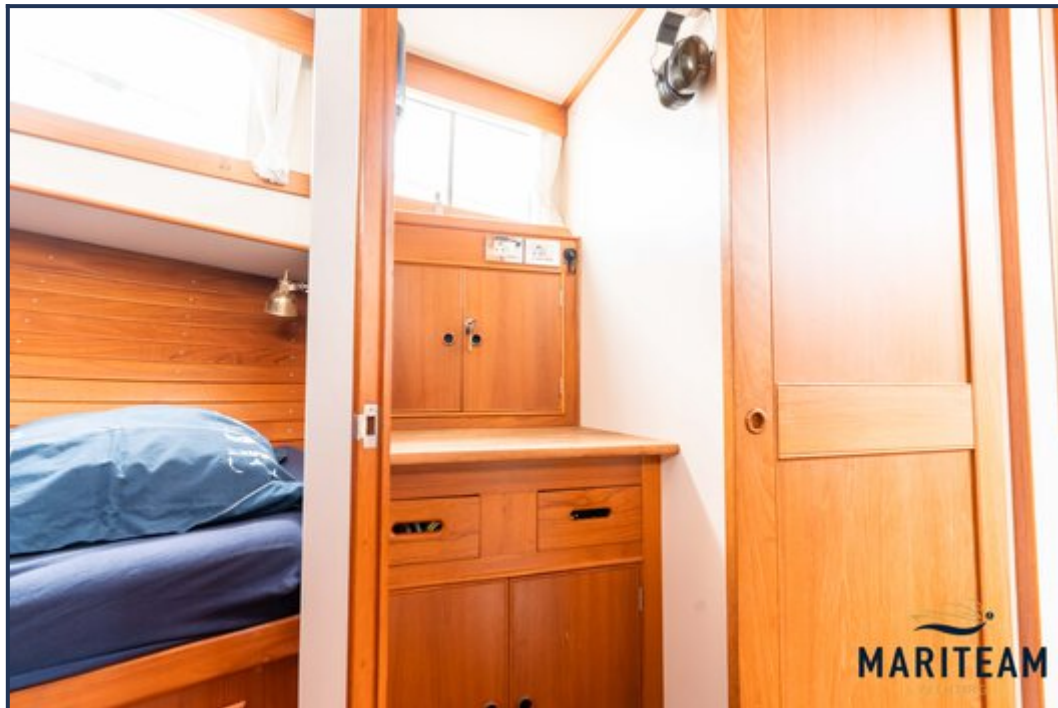


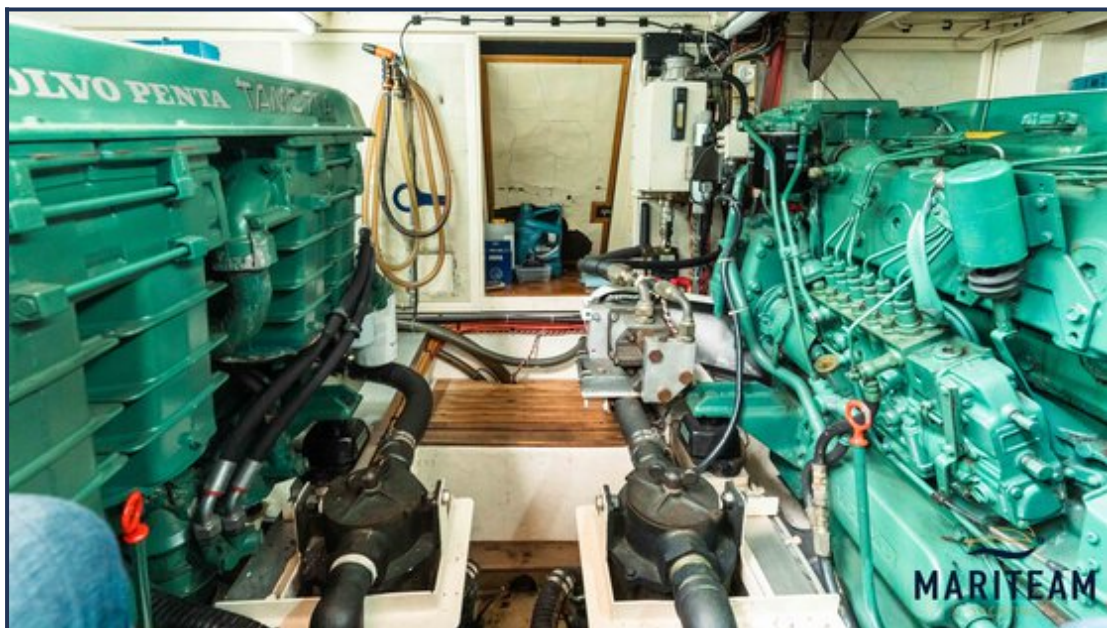


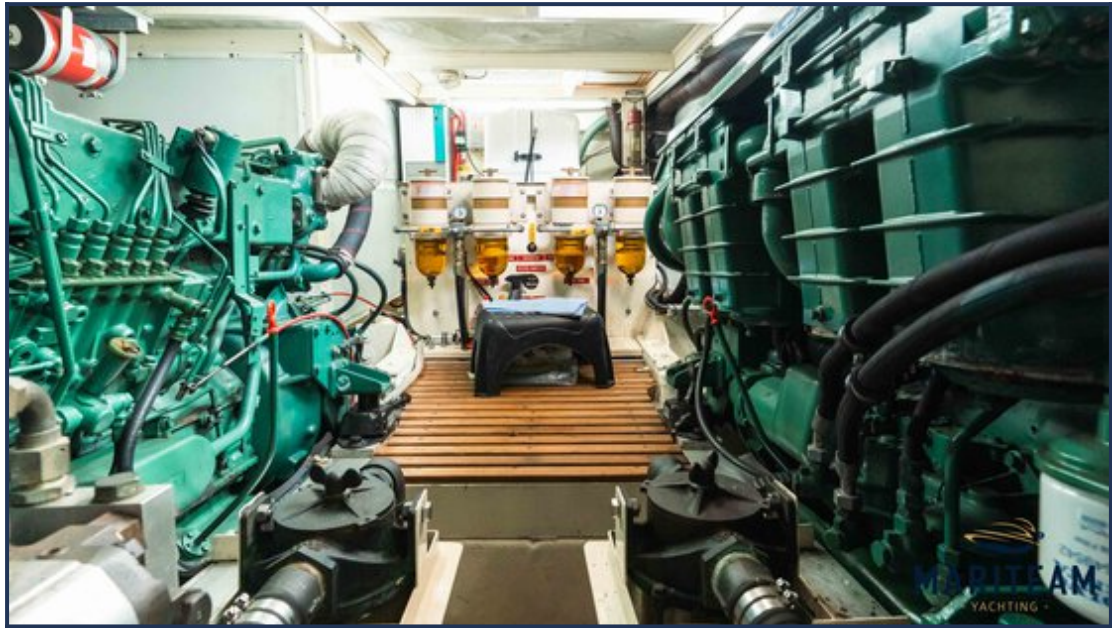




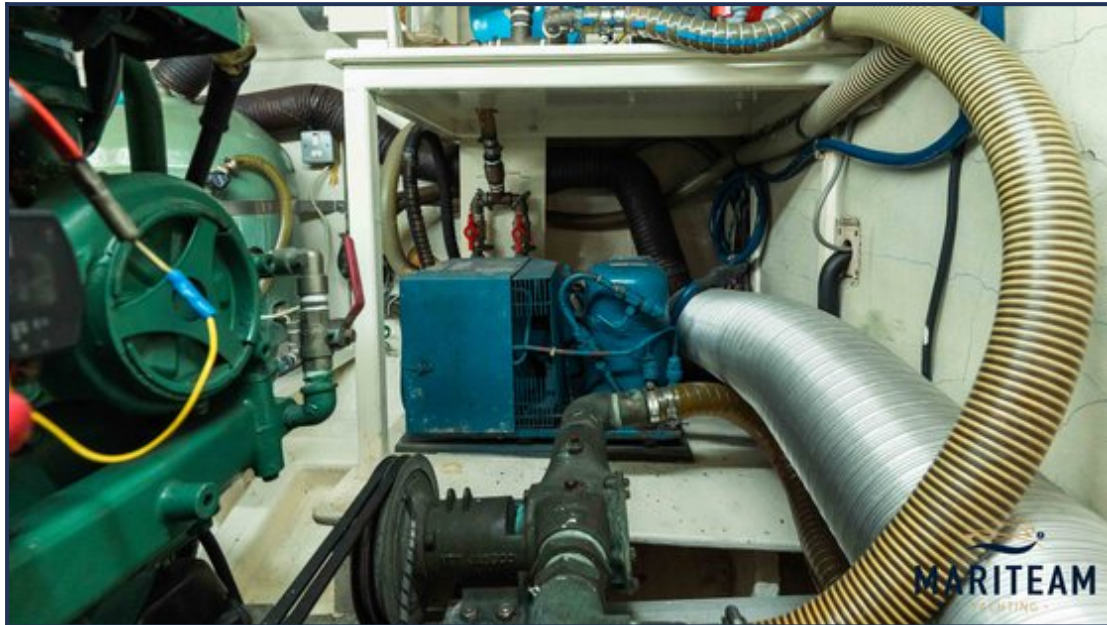


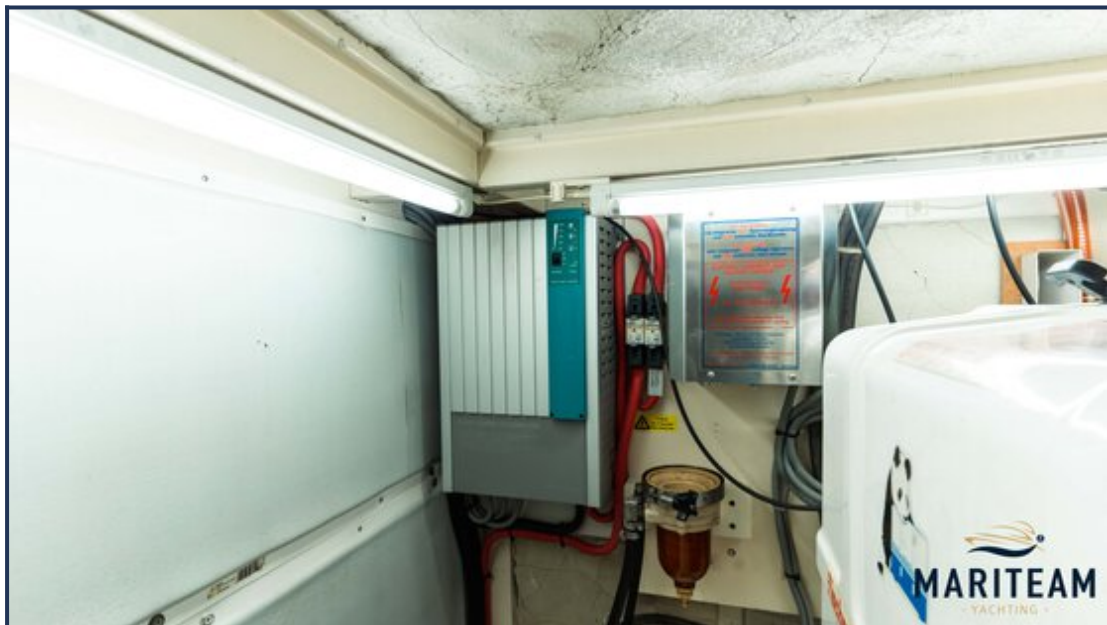












These particulars are given in good faith as supplied but cannot be guaranteed and cannot be used for contracts.