



De Vries Lentsch 'SIMMERDREAM'

LOA (m):	16.50 m
Beam (m):	4.00 m
Draft (m):	0.9 m
Shipyard:	De Vries Lentsch
Year built:	1946
Engines:	1x 105hp DAF
Cabins:	2
Homeport:	Grou
Price:	€ (not set)

The 1946 De Vries Lentsch Classic Round Bilge Motoryacht is a stunning example of vintage yacht design and craftsmanship. With its elegant lines and comfortable interior, this yacht is a timeless eye-catcher.

Main specifications

Model:	Classic Round Bilged Motoryacht
LOA (m):	16.50 m
Beam (m):	4.00 m
Draft (m):	0.9 m
Year:	1946
Hull Material:	Steel
Cabins:	2
Sleeping places:	3
Number of main engine(s):	1
Power of main engine(s) (hp):	105
Brand of main engine(s):	DAF
Price:	€ (not set)
VAT status:	Exempt

General

Name :	Simmerdream
Shipyard:	De Vries Lentsch
Beam (m):	3.5
Year built:	1946
Hull material:	Steel
Deck material:	Steel
Superstructure material:	Wood
Window material:	Single
Fuel tank (Litre and material):	120L, SS
Freshwater Tank (Liter and material):	100L, SS

Accommodation

Stove:	Zanussi Electric Ceramic
Refrigerator:	Coolmatic
Freezer:	Coolmatic
Single berths:	3x
Double bed:	1x
Cabins:	2
Toilets:	2x electric
Showers:	2x

Machinery

Port engine (Brand, type, hp, gearbox):	DAF 575 105hp
Main engines control (Brand and type):	Morse cablw Hydraulic
Drive (Shaft, IPS, Jet):	Propeller shaft
Generator (Brand, type, Kw):	Onan
Bowthruster (Brand, type, elec/hyd):	Vetus
Hot water system:	Isothemp, boiler
Heating system (brand, model, type):	Airtronic Hot Air
Airconditioning system (Brand, model):	Airconditioning in the back of the boat
Steering system:	Cable
Generator hours:	733

Electrical system

House battery (Number of battery,type, total Amp, year):	2x AGM
Start battery (Number of battery,type, total Amp, year):	2x 180Amp VMR
DC system (V) AC system (V):	12V/ 220V
Battery charger (V/W/Amp):	12v/ 40Amp

Equipment

Anchor:	present
Windlass:	present
Search light:	Jabsco
Horn:	present





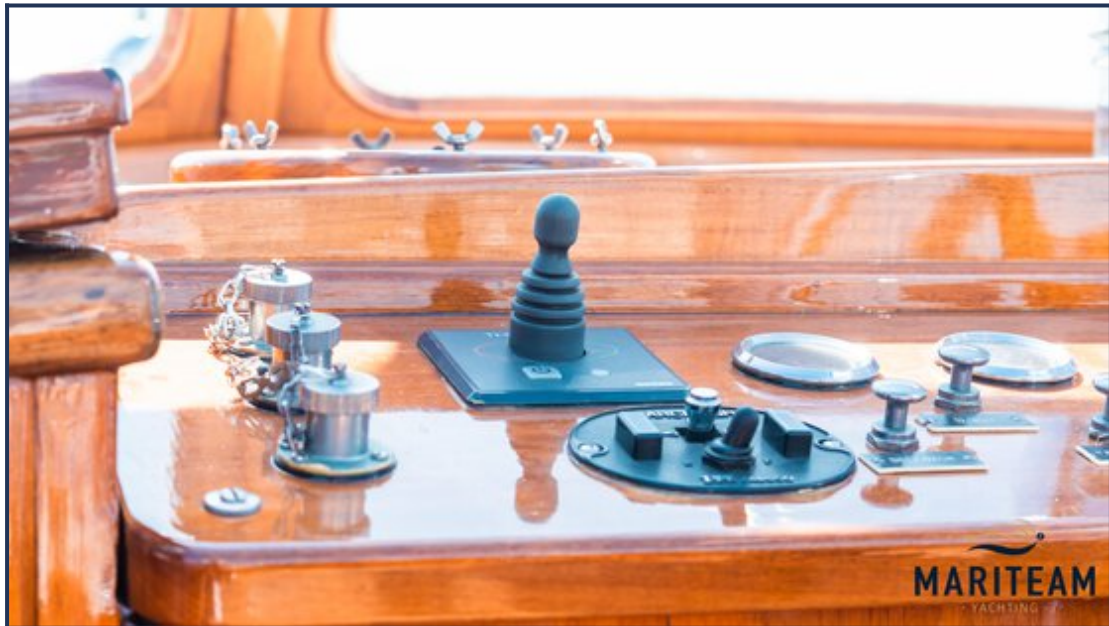










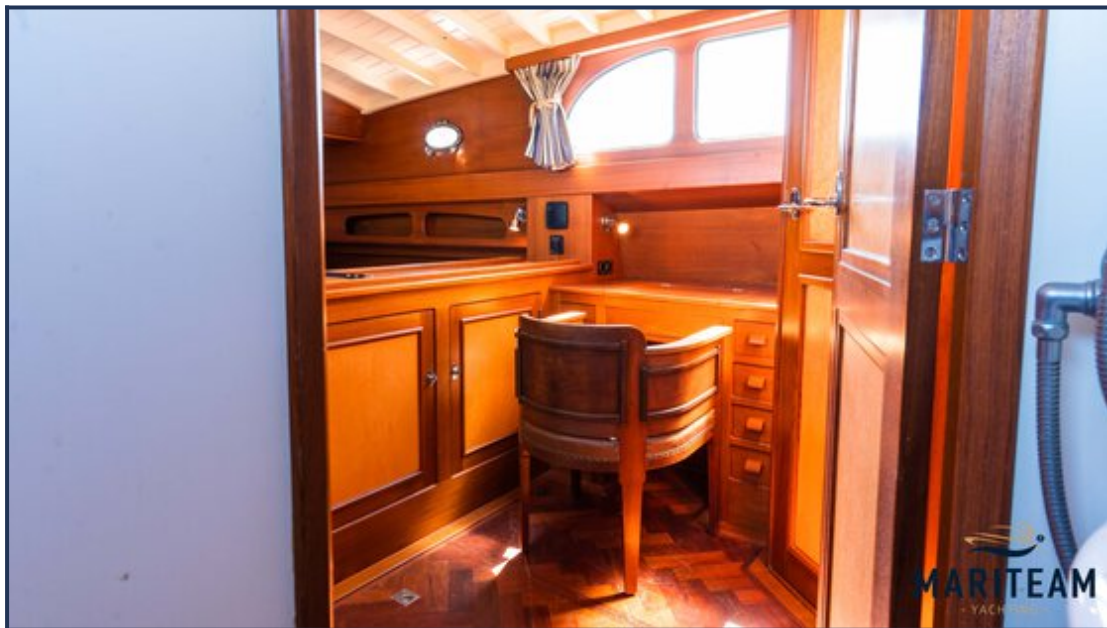




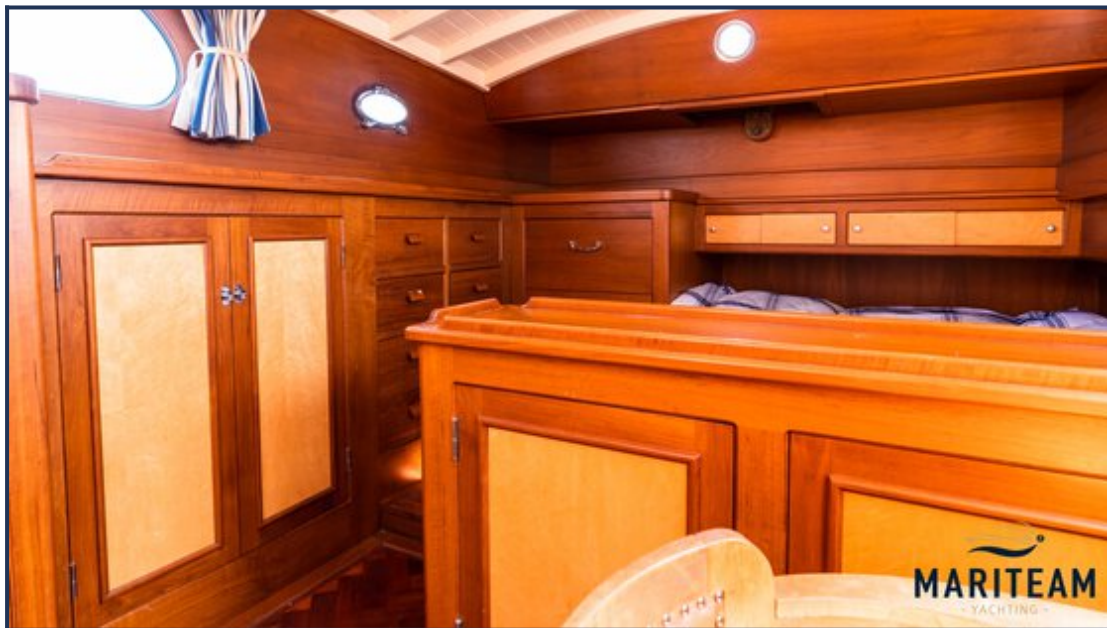


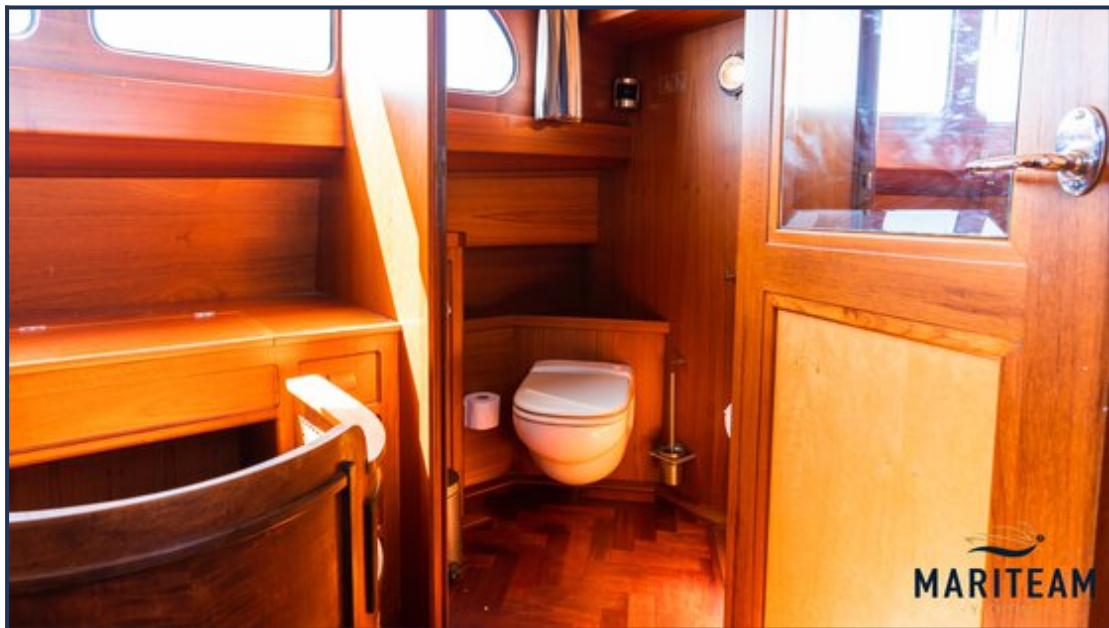
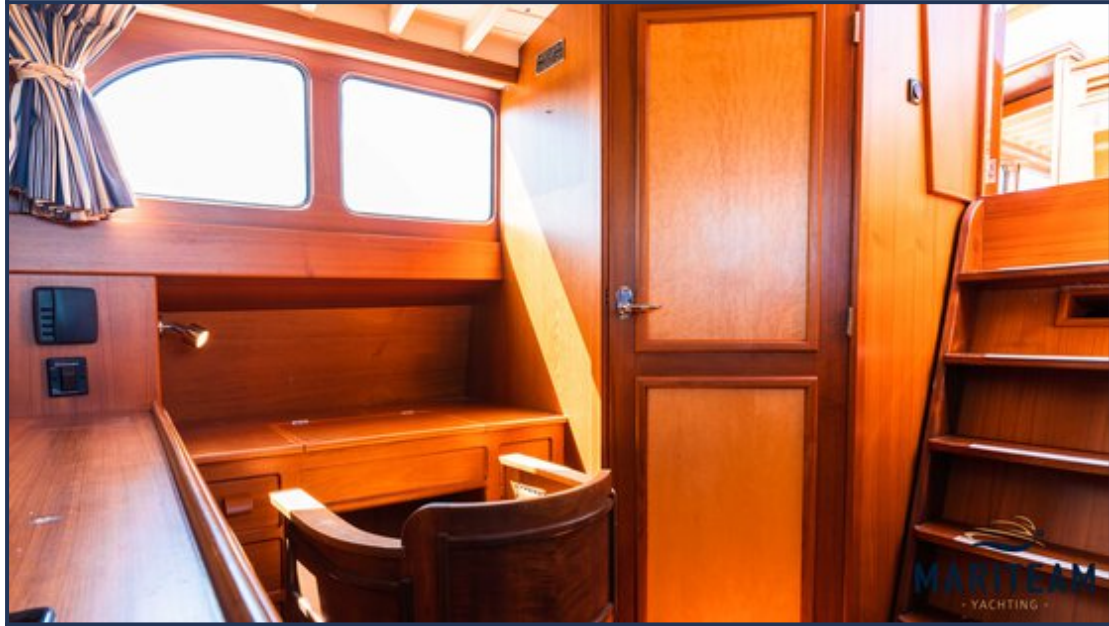


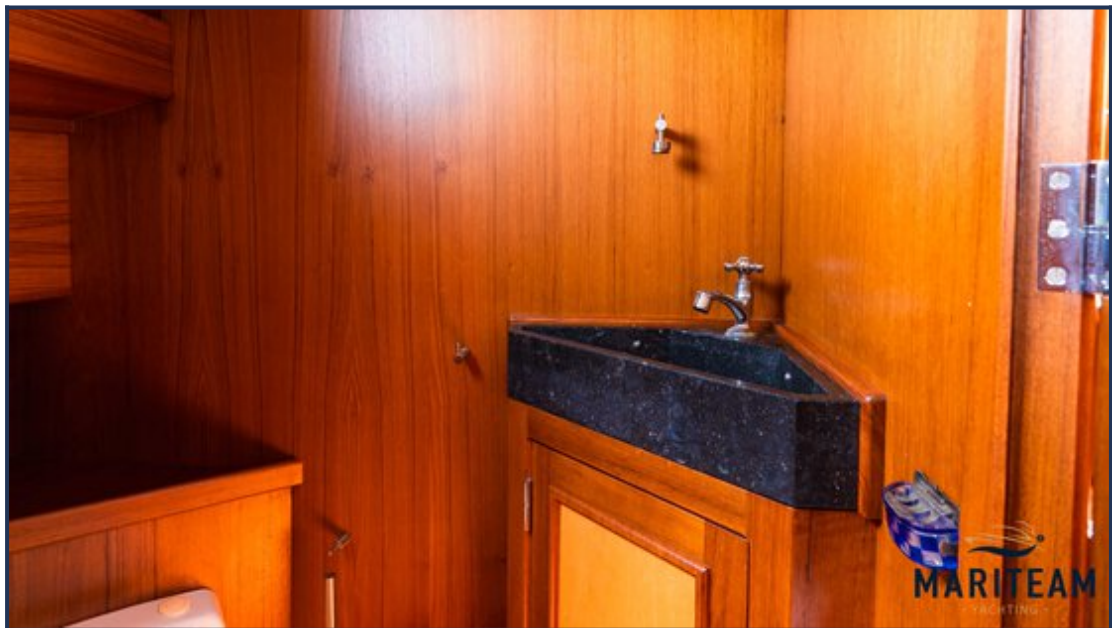


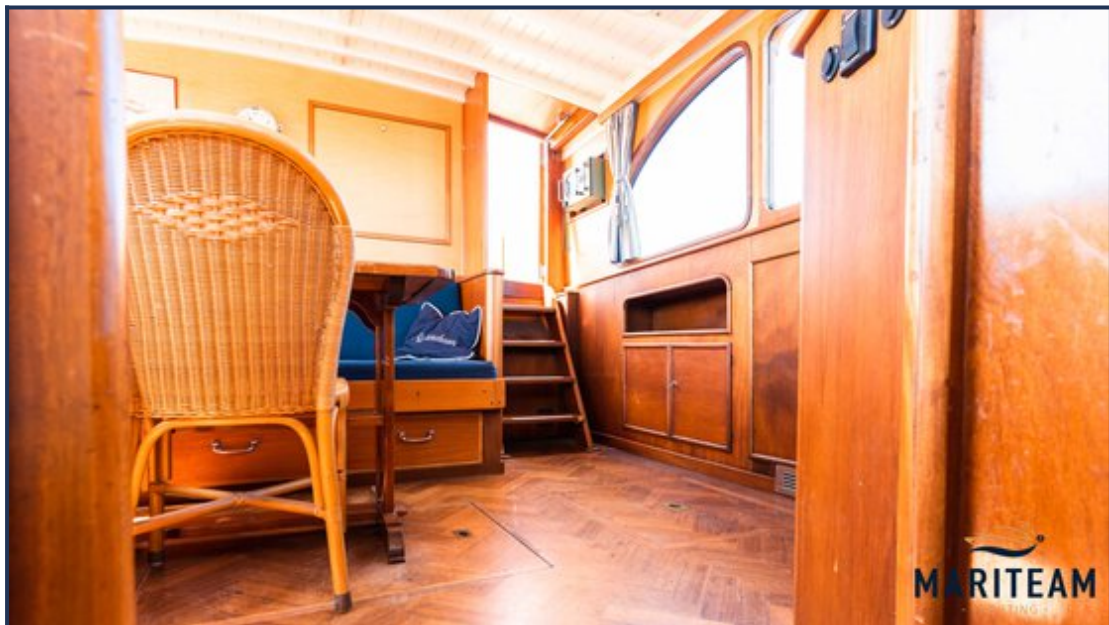


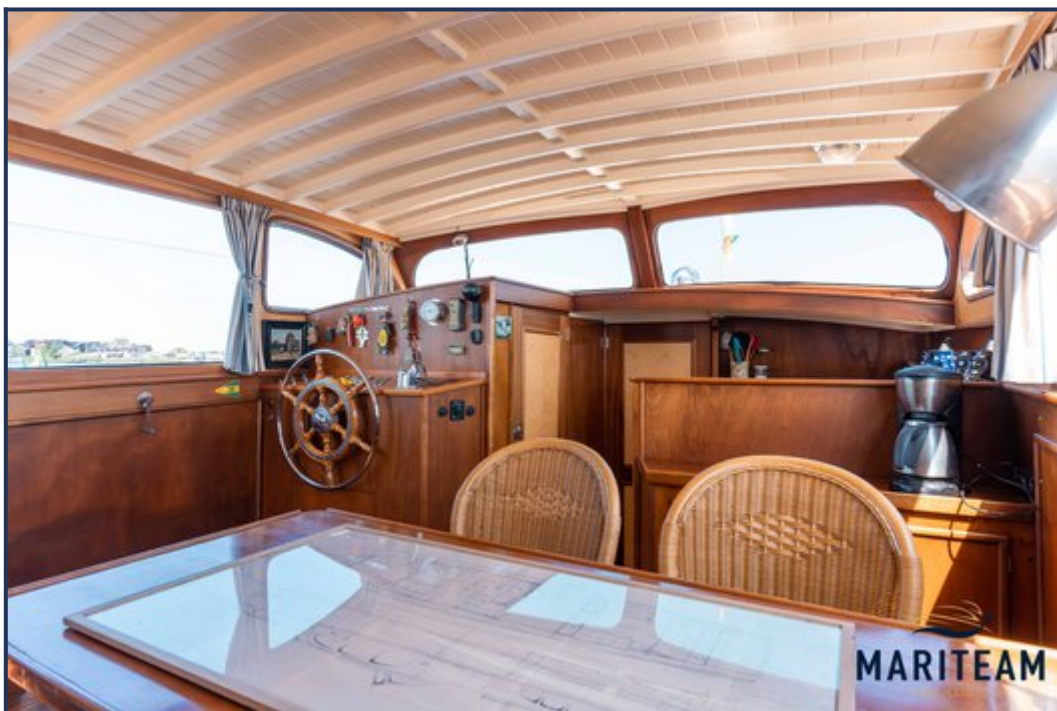




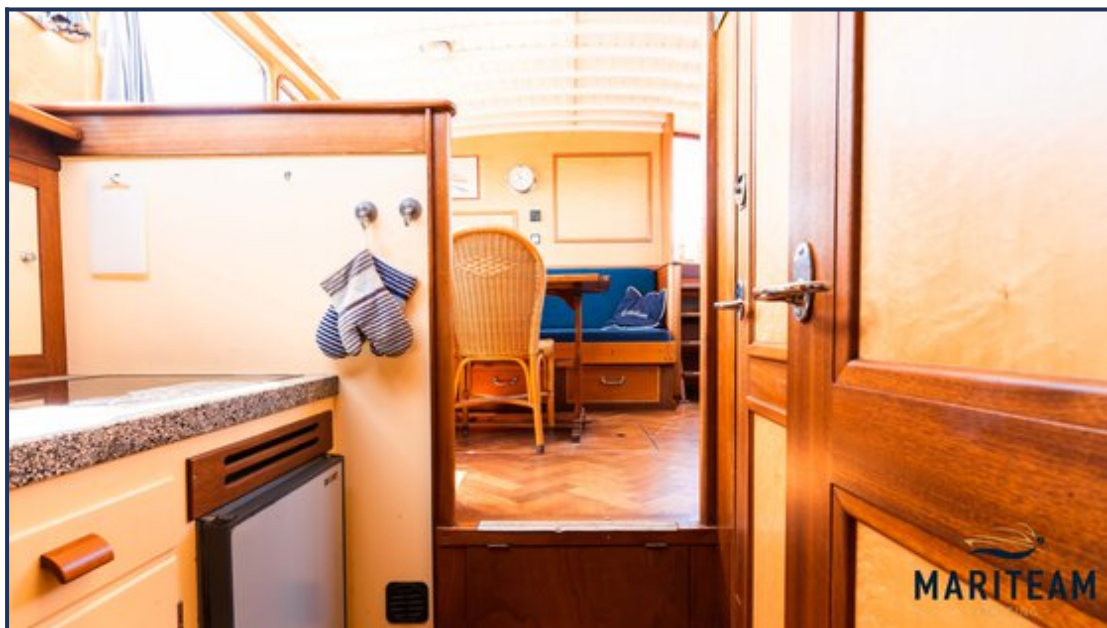








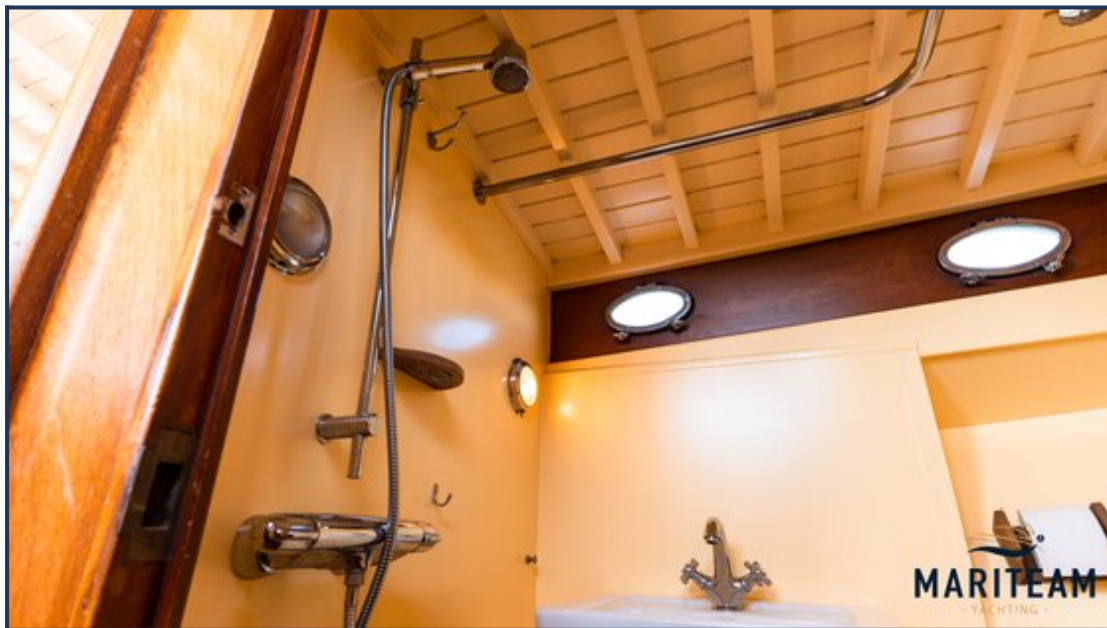
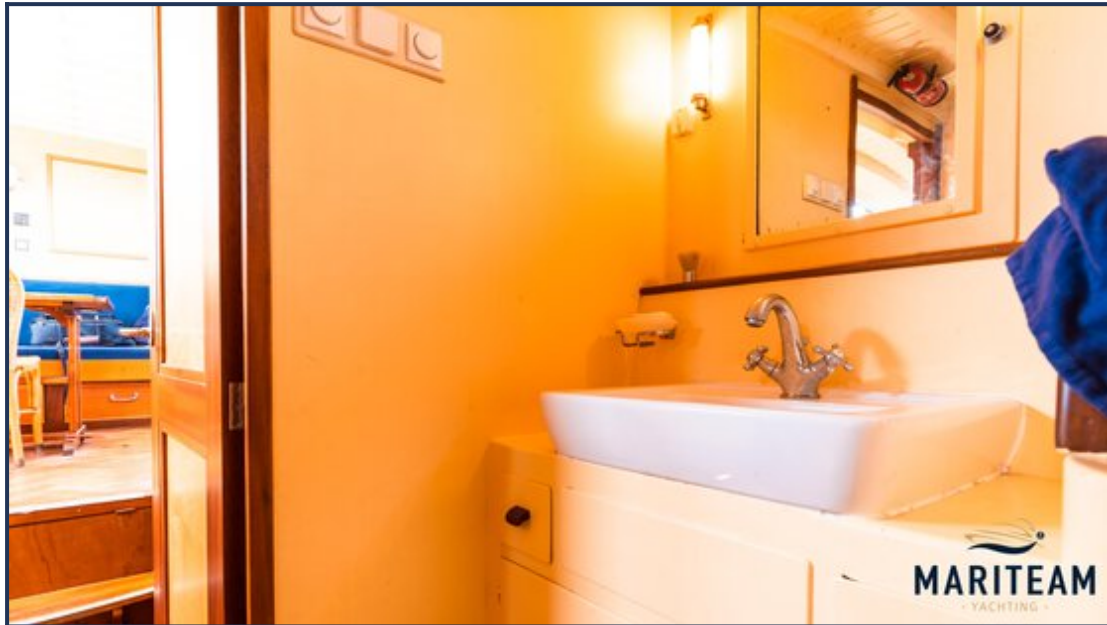


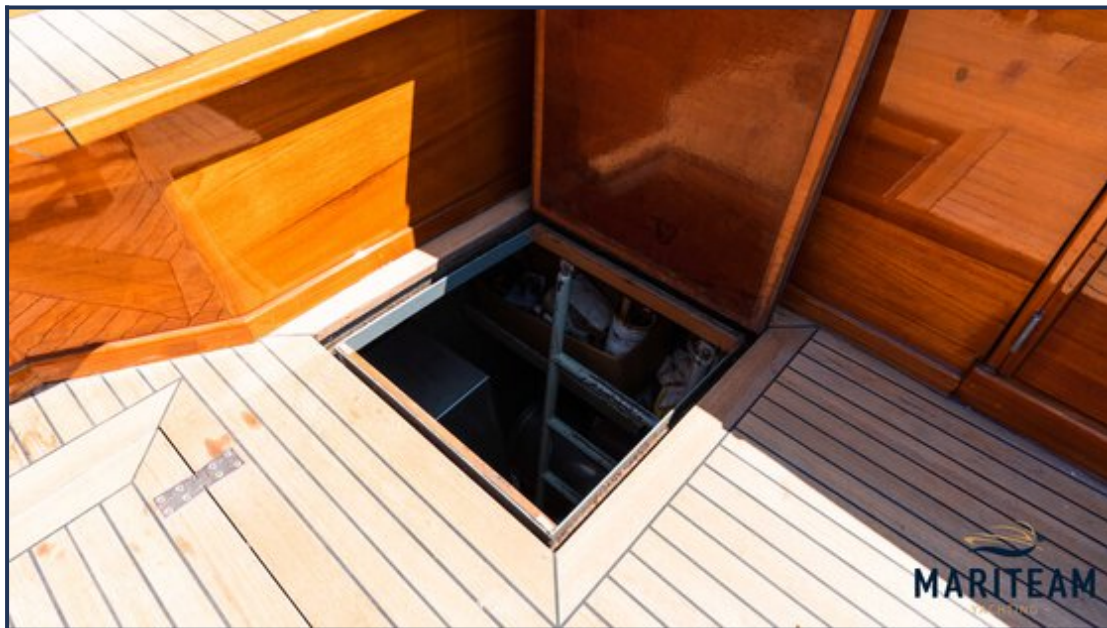
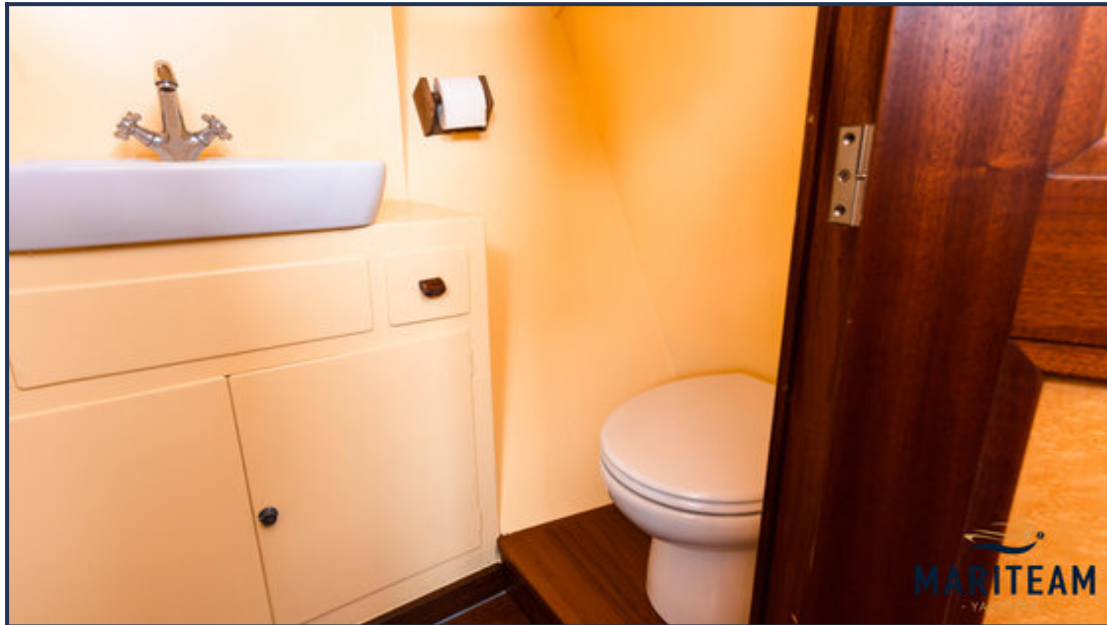








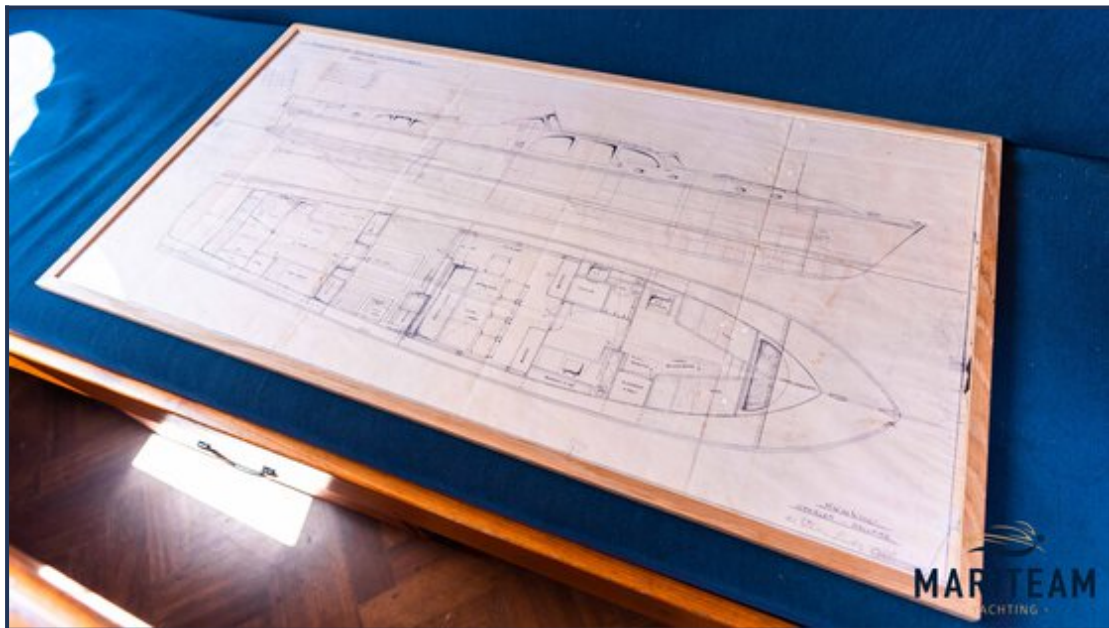


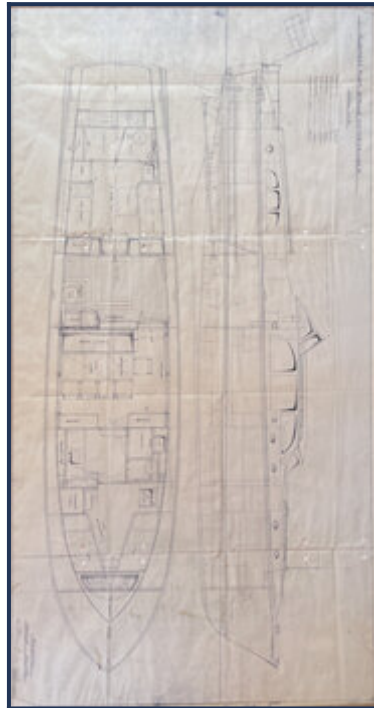












These particulars are given in good faith as supplied but cannot be guaranteed and cannot be used for contracts.