



MARITEAM

- YACHTING -



Selene 42 Ocean Trawler 'MISS MELLOW'

LOA (m):	13.77 m
Beam (m):	4.42 m
Draft (m):	1.42 m
Engines:	1x 230hp Cummins
Cabins:	2
Homeport:	Heeg, Netherlands
Price:	€ (not set)

Miss Mellow, a Selene 42 Ocean Trawler yacht from 2009, is a combination of elegance and adventure. With a sleek design and updated amenities, this nearly 14-meter-long vessel offers an exceptional yachting experience. The spacious interior features teak finishes, large windows, and comfortable seating, while the two beautifully opposing cabins provide a private retreat for four to six guests. Equipped with a 230 horsepower Cummins engine and advanced navigation systems, Miss Mellow delivers exceptional performance and reliability. The Miss Mellow is not VAT paid and is therefore perfect for countries outside Europe or for a business purchase.

MARITEAM YACHTING

De Draei 29, 8621 CZ Heeg 📍 The Netherlands 📞 Phone +31 (0) 582 889254

info@mariteamyachting.nl 📧 www.mariteamyachting.nl

Main specifications

Model:	42 Ocean Trawler
LOA (m):	13.77 m
Beam (m):	4.42 m
Draft (m):	1.42 m
Year:	2009
Hull Material:	GRP
Cabins:	2
Sleeping places:	3
Number of main engine(s):	1
Power of main engine(s) (hp):	230
Brand of main engine(s):	Cummins
Price:	€ (not set)
HIN number:	CN-XJE42029L910
Year launched:	2009

General

Name :	Miss Mellow
Shipyard:	Jet tern marine
CE-category:	B
Cruising speed (Kn):	6 kn @ 6 L/H
Maximum speed (Kn):	9 kn @ 33 L/H
Displacement (t):	18,6 t / 41000 lbs
Fuel tank (Litre and material):	2200 L
Freshwater Tank (Liter and material):	870 L
Black water tank (Litre and material):	225 L
Hull material:	GRP

Superstructure material:	GRP
Deck material:	GRP
Deck finish:	GRP
Interior finish:	Cherry and Teak
Antifouling (Year):	2021

Accommodation

Double bed:	2
Single berths:	2
Showers:	2x
Toilets:	2x
Heating system (brand, model, type):	Webasto 2023
Airconditioning system (Brand, model):	3x Cruisair
Stove:	Force 10 - 3 pitter propane + 2 electric
Oven:	Force 10 Propane
Microwave:	Gormet Wave
Refrigerator:	Vitrifrigo 12-24v/ 220v 2018
Freezer:	Vitrifrigo

Machinery

Engine hours port engine:	2100
Star engine (Brand, type, hp, gearbox):	Cummins QSB5.9 230 HP
Drive (Shaft, IPS, Jet):	Shaft
Shaft lubrication:	Water
Prop (Number of blades, material):	4 blade

Rope cutter on propulsion:	present
Generator (Brand, type, Kw):	Northern Lights M773LW - 7KW
Generator hours:	1600
Stabilizer system:	Flop Stopper 2019
Bowthruster (Brand, type, elec/hyd):	Sidepower 24V - SE170 Pro
Sternthruster (Brand, type, elec/hyd):	Sidepower 12V SE80 Pro-IP
Watermaker:	Eco2Tec 900AM22-220V - 2019 new membrane
Water pressure pump (Brand, model):	Grose
Hot water system:	Raritan 2022
Fuel polishing system:	ESI
Oil change system:	Reverso 4, Cummins, generator and gears

Electrical system

DC system (V) AC system (V):	12v / 24v / 220v
Battery charger (V/W/Amp):	Mastervolt 12v/100 AMP - 24v/20 AMP
Inverter (V/W/Amp):	Mastervolt Mass Combi 12v/100Amp/2200W 2018
House battery (Number of battery,type, total Amp, year):	3x 12V AGM 2021
Start battery (Number of battery,type, total Amp, year):	4x STD Vetus 12v (same bank as bowthruster)
Bowthruster battery (Number of battery,type, total Amp, year):	4x STD Vetus 12v (same bank as start battery)
Sternthruster battery (Number of battery,type, total Amp, year):	12v house battery

Safety system

Life raft:	Present 4 person, out of date
------------	-------------------------------

Electrical bilge pump:	5x Rule 2000 g/h
Manual bilge pump:	2x
Fire extinguisher engine room:	1x Seafire
Fire alarm:	3x smoke detector
Gas detector:	1x
EPIRB:	1x ACR, out of date
Horn:	Ja

Navigation system

Radar screen:	Combined with GPS plotter
Rudder indicator:	present
VHF:	Icom

Equipment

Tender:	AB Mares Aluminium 10Ft
Tender crane:	Mast and boom
Anchor:	Bow: Delta 20Kg & Cobra 35Kg - Stern: Rocna 20Kg
Deck shower:	1













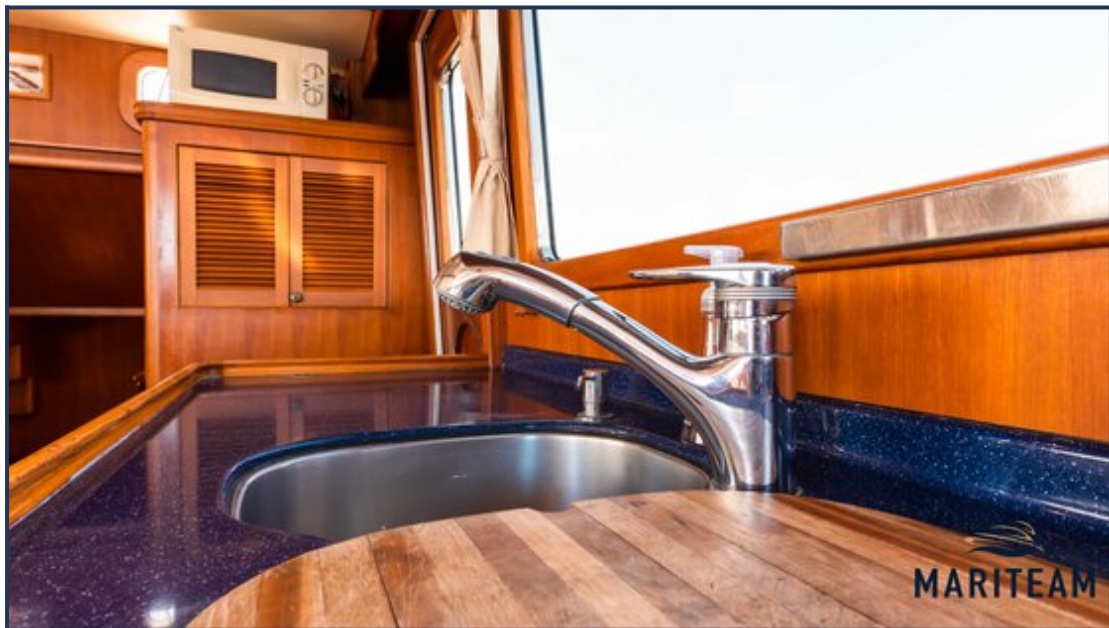


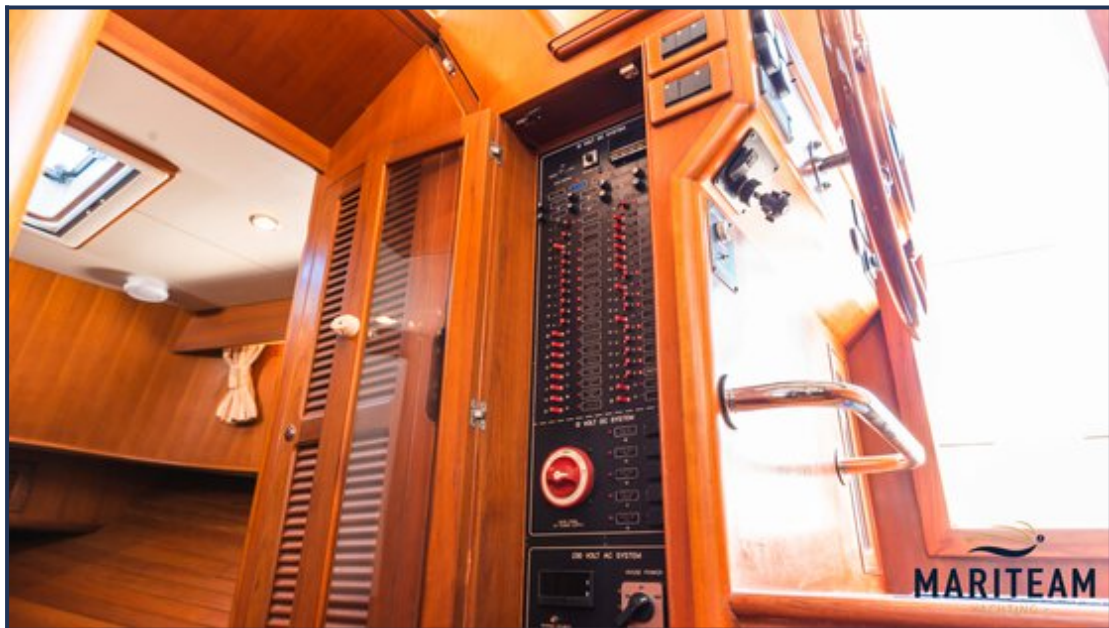


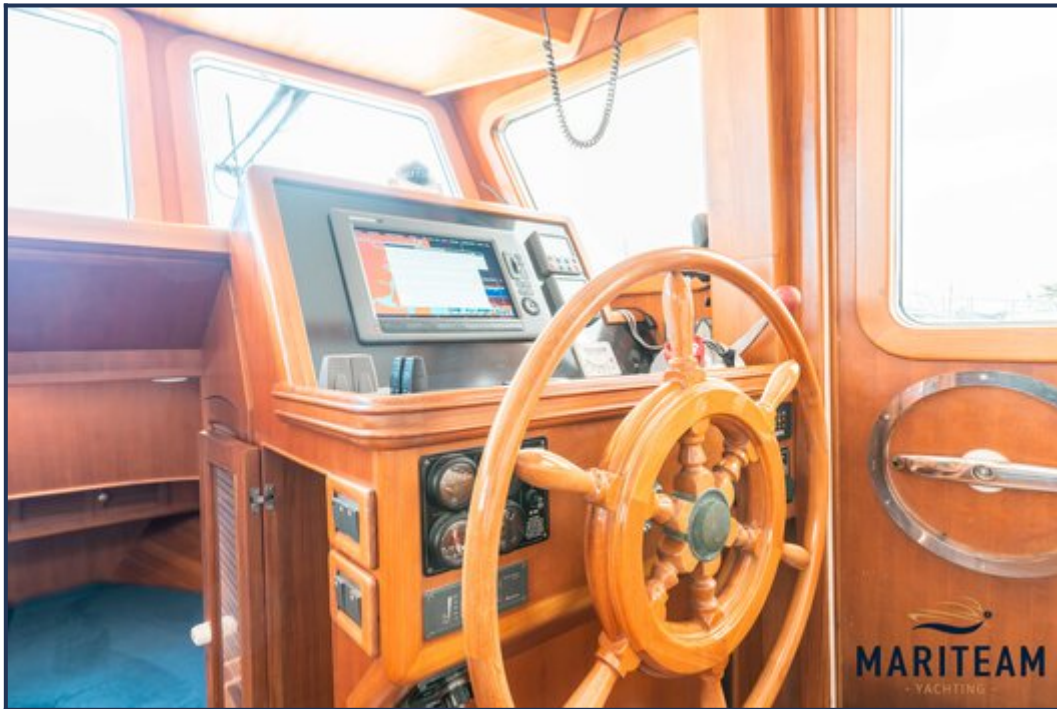


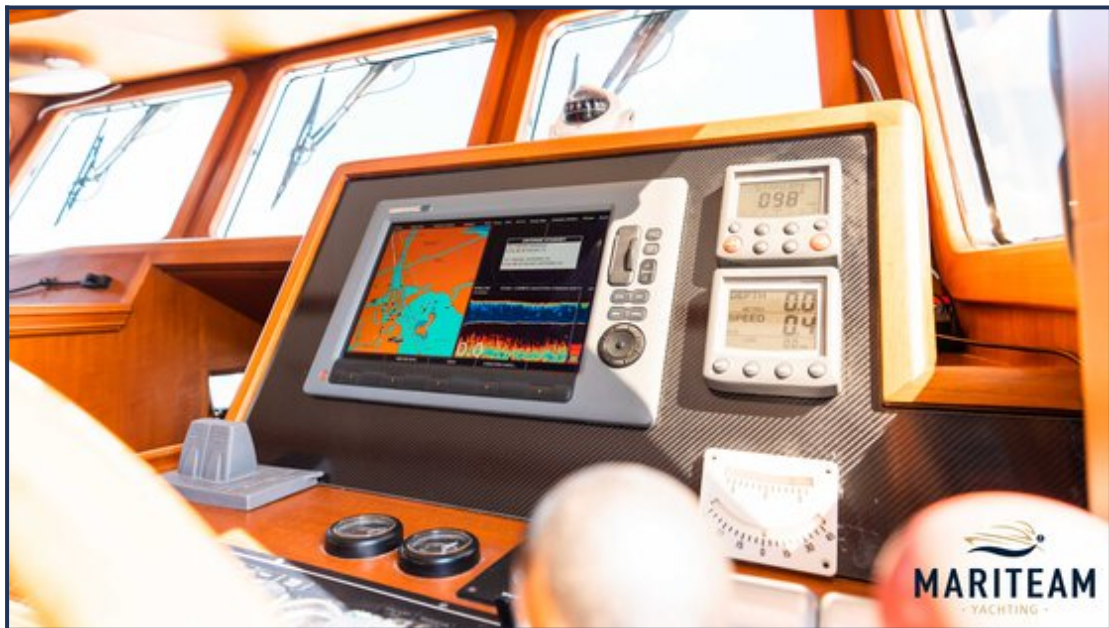


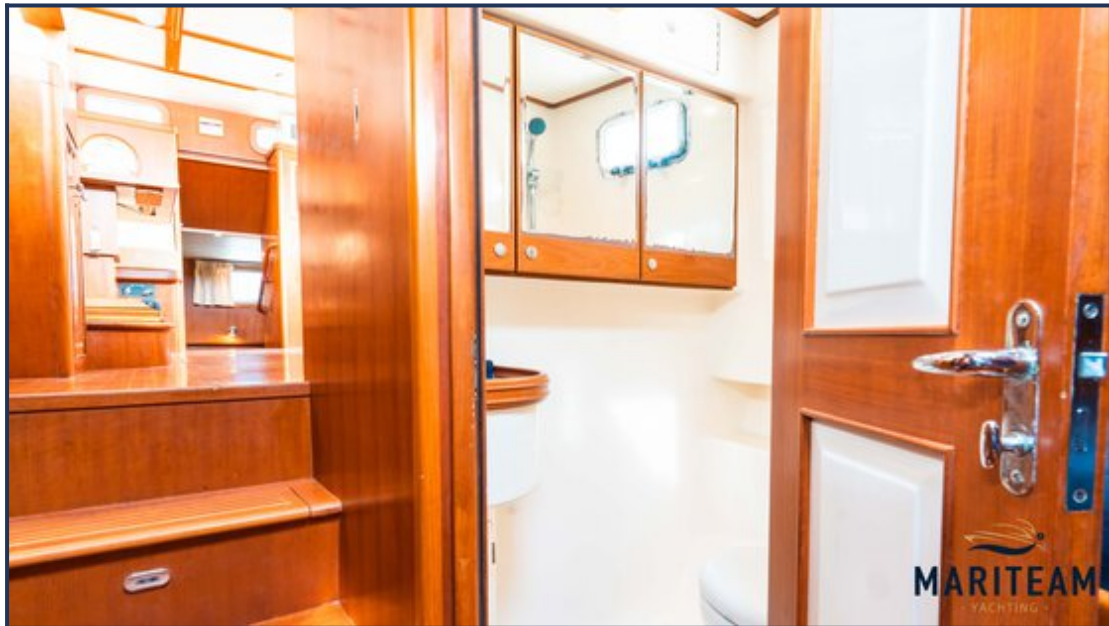


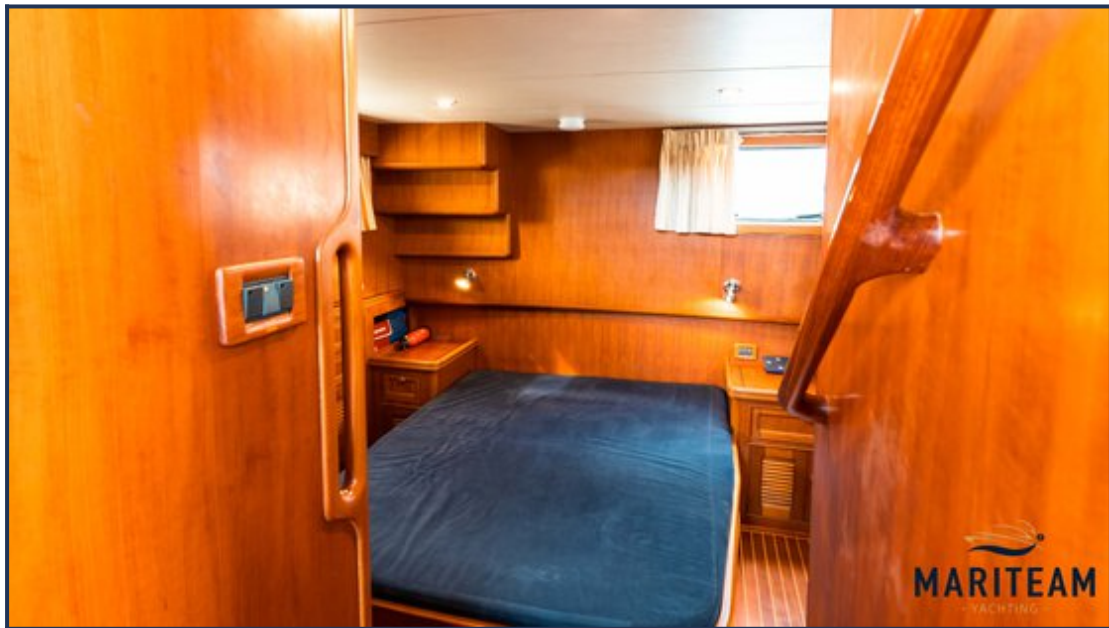
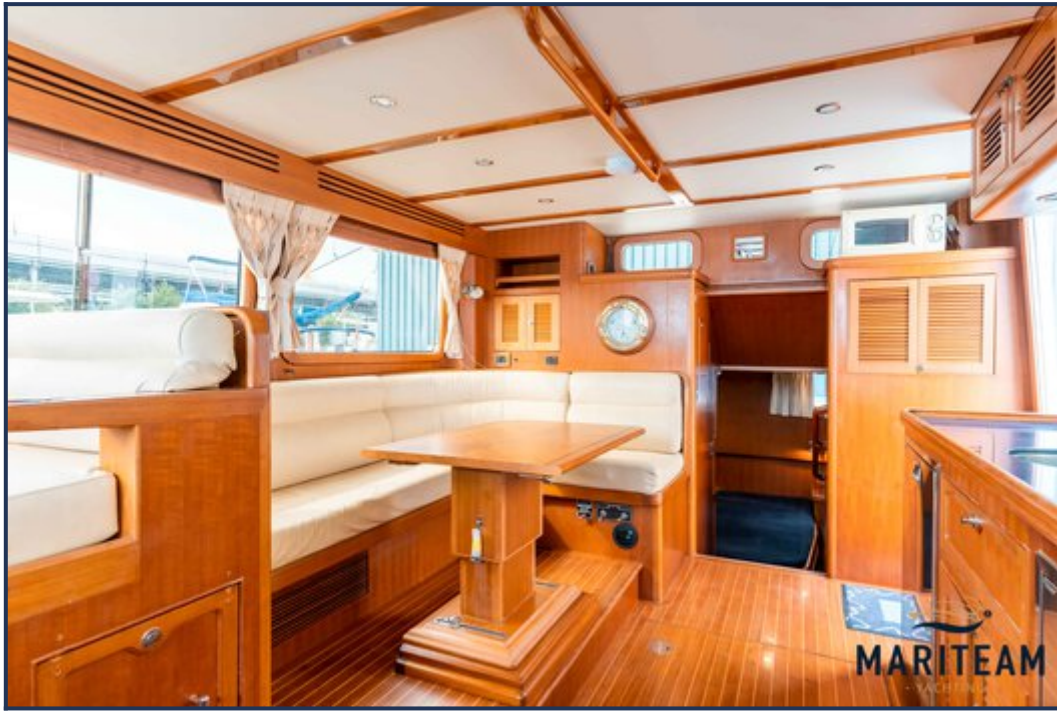


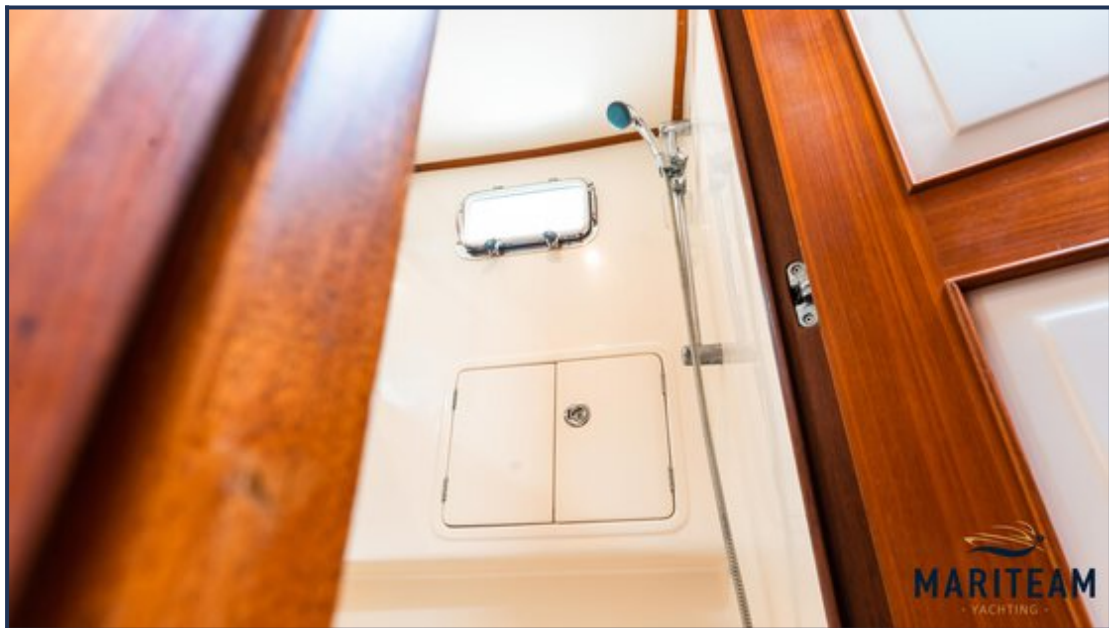
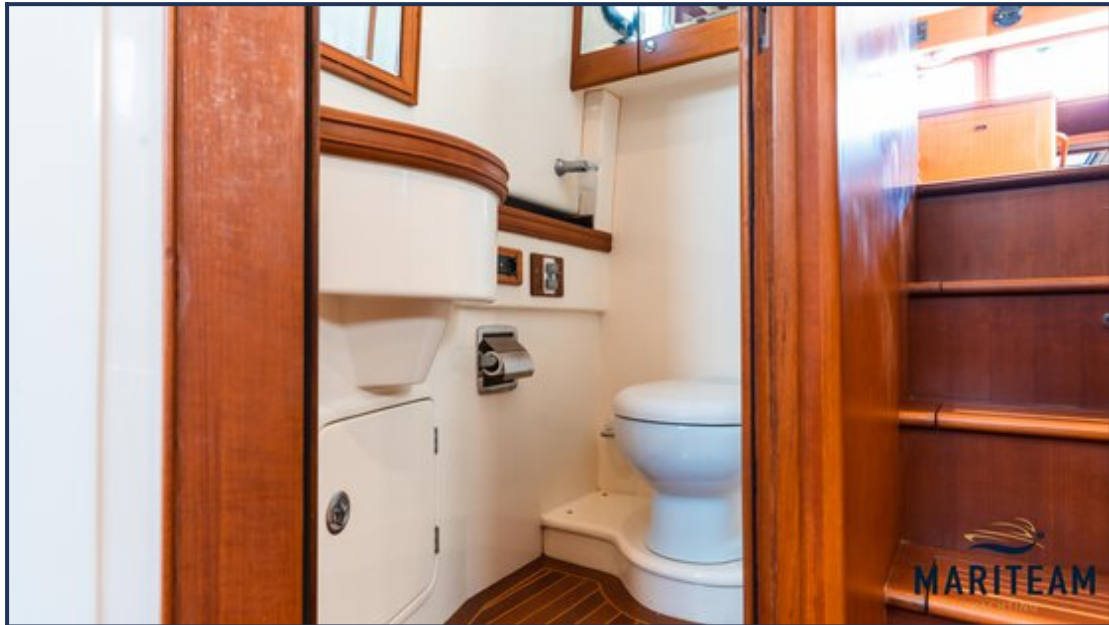


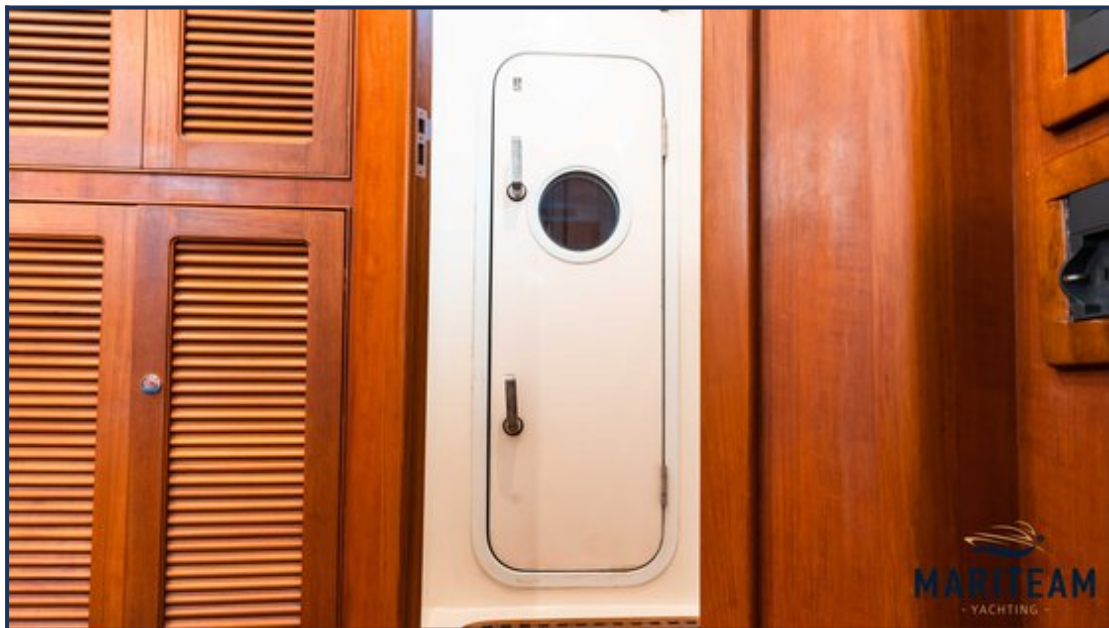


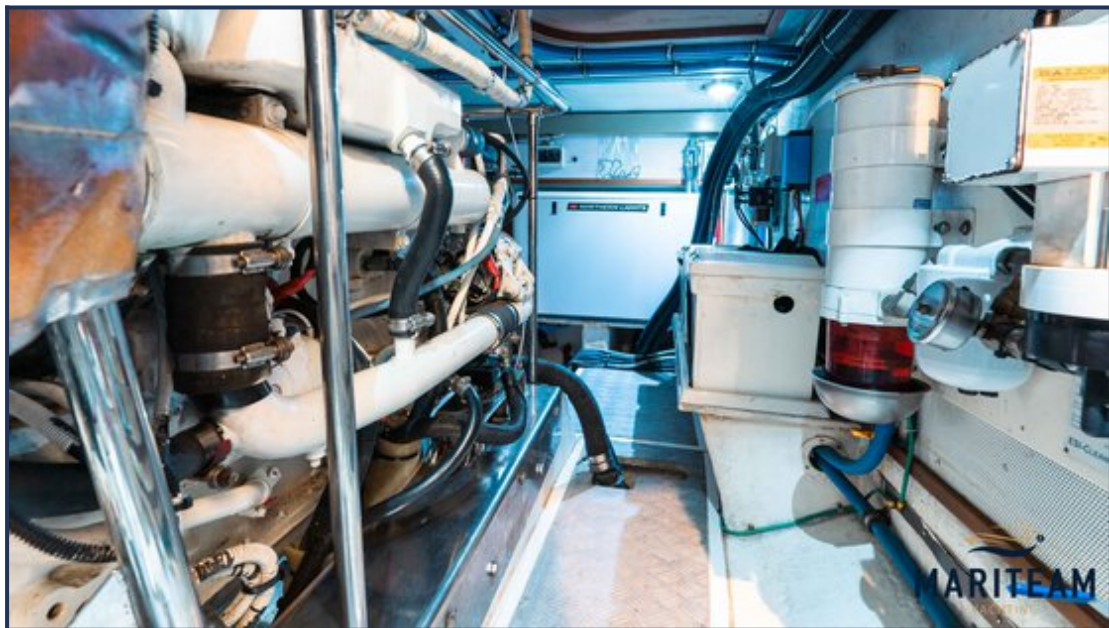
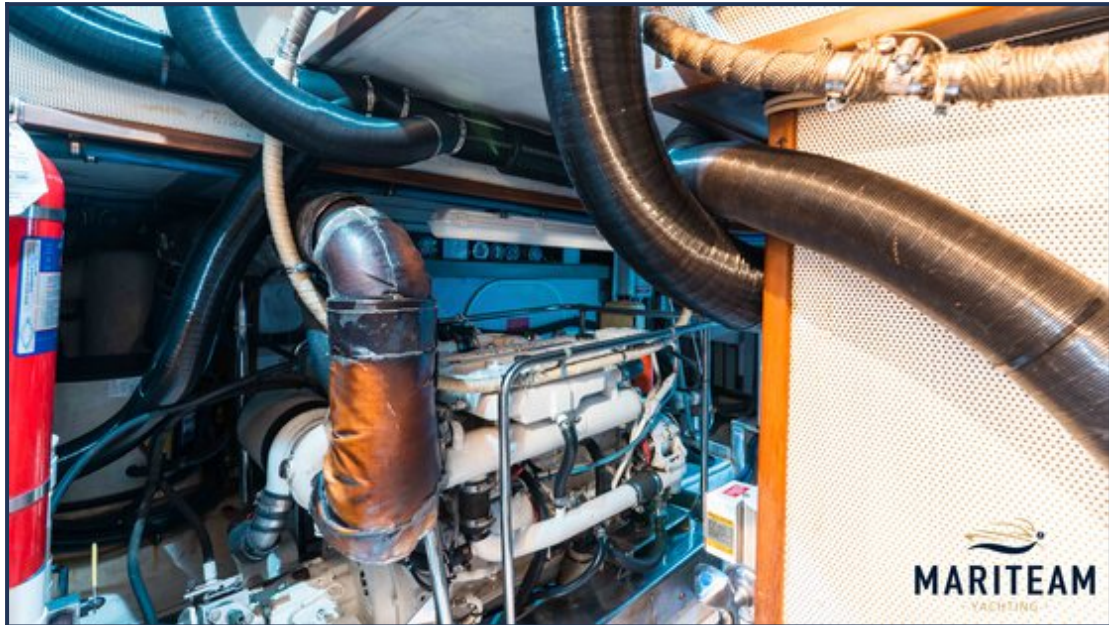




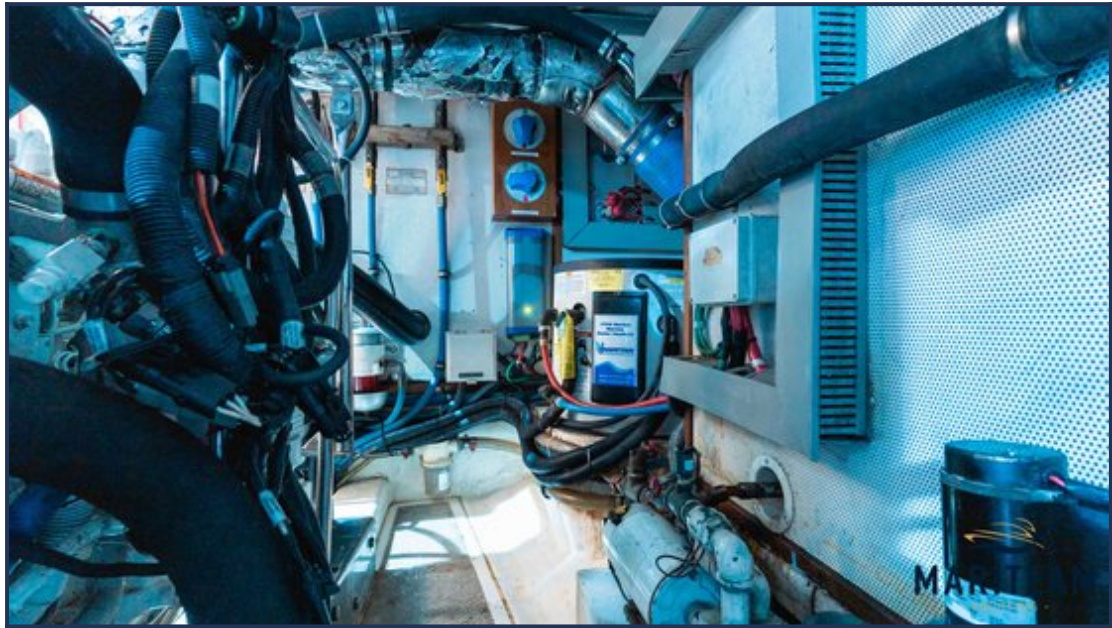












These particulars are given in good faith as supplied but cannot be guaranteed and cannot be used for contracts.