



Grand Banks 32 Classic 'PLECIER'

LOA (m):	9.73 m
Beam (m):	3.60 m
Draft (m):	1.14 m
Engines:	1x 120hp Ford
Cabins:	1
Homeport:	Service office, Heeg
Price:	€ (not set)

The Grand Banks 32 is equipped with new stainless steel water and fuel tanks, electronic engine control, Kabola central heating, a new teak deck, fixed sunroof, and a refurbished Ford Lehman engine. The flybridge of the 'Plecier' comfortably accommodates four people with storage space under the benches. The rear cockpit offers shade with the fixed sunroof. Inside, there is a corner sofa and a three-person sofa. The kitchen features a refrigerator, a two-burner ceramic stove, and a microwave. The steering position has access to the 120 hp Ford engine, a bow thruster, and Raymarine navigation equipment. The bow area includes a double bed and a bathroom.

Main specifications

Model:	32 Classic
LOA (m):	9.73 m
Beam (m):	3.60 m
Draft (m):	1.14 m
Year:	1973
Hull Material:	Wood
Cabins:	1
Sleeping places:	4
Number of main engine(s):	1
Power of main engine(s) (hp):	120
Brand of main engine(s):	Ford
Price:	€ (not set)
VAT status:	EU exempt

General

Name :	Plecier
Hull material:	Wood
Deck material:	Wood
Superstructure material:	Wood
Deck finish:	Teak
Fuel tank (Litre and material):	2 x 400L - RVS
Freshwater Tank (Liter and material):	1 x 306L - RVS

Accommodation

Stove:	2 pits, glass ceramic (Trinox Schott Ceran)
Microwave:	Sharp
Refrigerator:	Indel Webasto Marine
Single berths:	4 x
Cabins:	1
Toilets:	1 x
Showers:	1 x

Machinery

Engine hours port engine:	349.7
Star engine (Brand, type, hp, gearbox):	Ford Lehman 120pk, 2715E
Main engines control (Brand and type):	glendinning, electric
Drive (Shaft, IPS, Jet):	Shaft
Generator (Brand, type, Kw):	Rugirini
Generator hours:	-
Bowthruster (Brand, type, elec/hyd):	Vetus, electric
Electrical bilge pump:	1 x
Hot water system:	Boiler

Electrical system

House battery (Number of battery,type, total Amp, year):	2 x
Start battery (Number of battery,type, total Amp, year):	2 x
DC system (V) AC system (V):	12V / 24V

Inverter (V/W/Amp):	Victron Easy Plus Compact 1600W
Battery charger (V/W/Amp):	Mastervolt

Navigation system

Compass:	Vetus
Gps plotter:	Garmin GPS 120
Depth meter:	Garmin fishfinder 100
Log:	NASA marine
VHF:	Standard horizon eclips

Equipment

Anchor:	1 x
Windlass:	Neco





















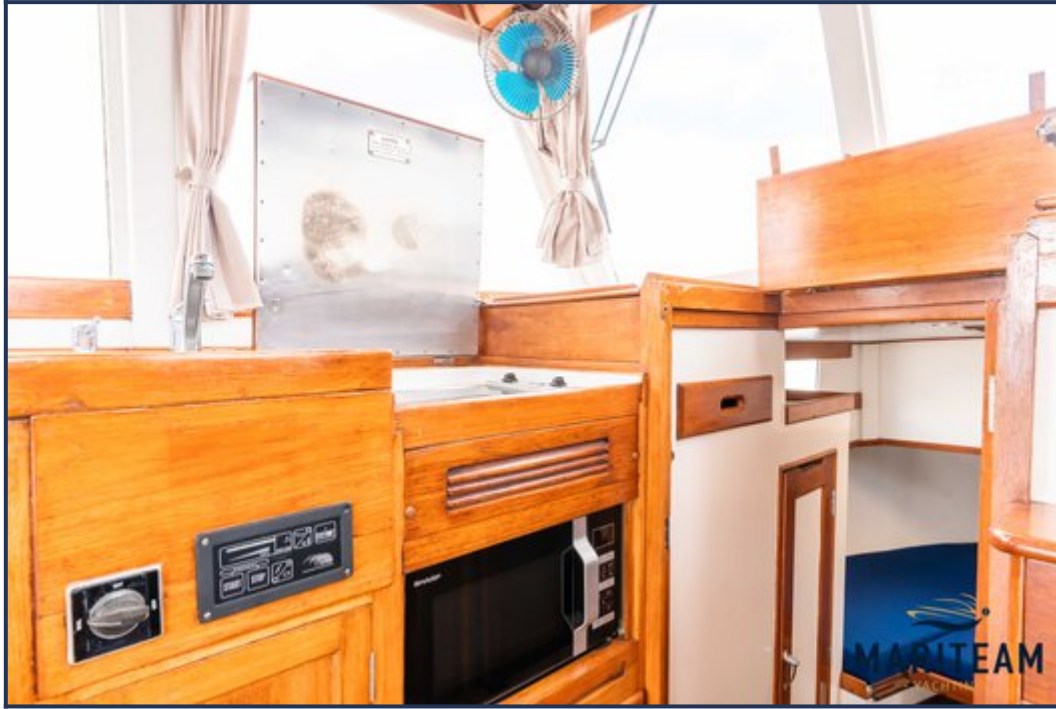


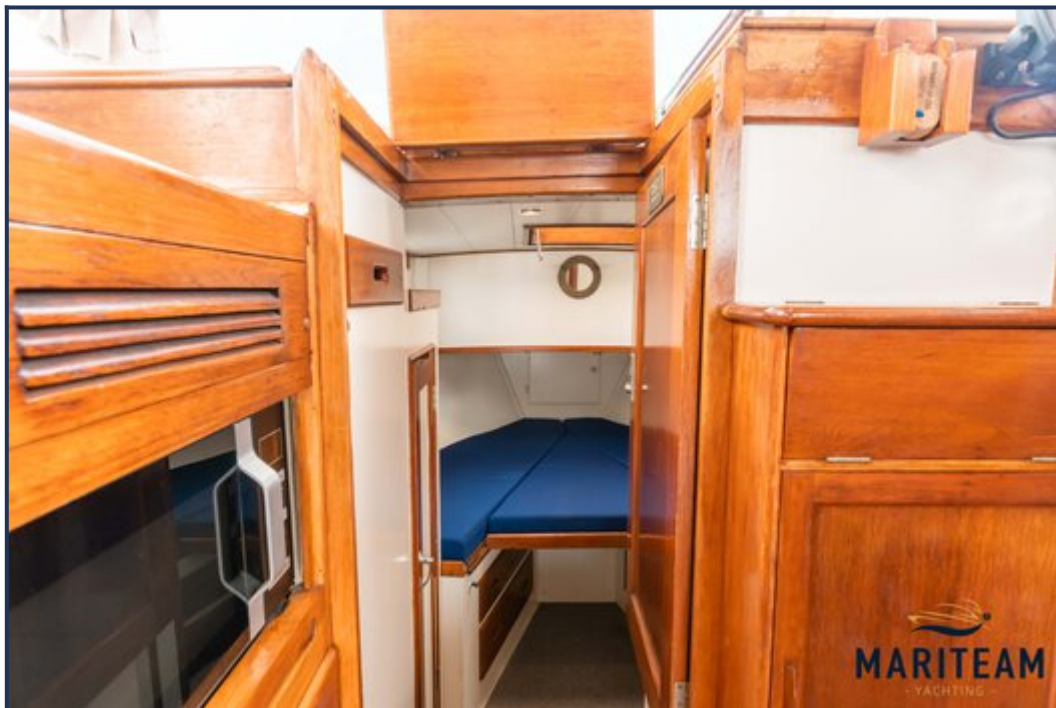






















These particulars are given in good faith as supplied but cannot be guaranteed and cannot be used for contracts.