



Grand Banks Eastbay 38 EX 'BOOSTER'

LOA (m):	11.57 m
Beam (m):	4.00 m
Draft (m):	1.02 m
Engines:	2x 435hp Caterpillar
Cabins:	1
Homeport:	Service office, Heeg
Price:	€ (not set)

The 'Booster' from the renowned Eastbay series, designed by C. Raymond Hunt, offers comfortable sailing and a spacious living area. Its openable soft top enhances the ample cockpit. Below deck, a well-equipped kitchen, cozy seating area, and bathroom with electric toilet and shower provide convenience. Powered by two 435 hp Caterpillar engines, it reaches 27 knots. Upgrades include electrical system, upholstery, lighting, Fusion Bluetooth radio, and teak deck revitalization with Nano coating. Effortless navigation and docking are ensured with bow and stern thrusters.

Main specifications

Model:	38 EX
LOA (m):	11.57 m
Beam (m):	4.00 m
Draft (m):	1.02 m
Year:	2000
Hull Material:	GRP
Cabins:	1
Sleeping places:	4
Number of main engine(s):	2
Power of main engine(s) (hp):	435
Brand of main engine(s):	Caterpillar
Price:	€ (not set)
VAT status:	EU Payed
HIN number:	MS-GNDH0089B000

General

Name :	Booster
Shipyard:	Grand Banks
CE-category:	B
Displacement (t):	11.6
Hull material:	GRP
Deck material:	GRP
Superstructure material:	GRP
Deck finish:	Teak
Window material:	Single
Fuel tank (Litre and material):	1302 L Aluminium

Freshwater Tank (Liter and material):	359 L Aluminium
Black water tank (Litre and material):	120 L GRP
Maximum speed (Kn):	27

Accommodation

Stove:	Princess 3372-1002
Microwave:	Sharp 248A
Oven:	Princess 3372-1002
Refrigerator:	Waeco MDC110
Freezer:	Waeco MDC110 freezer
Interior finish:	Teak
Single berths:	2x
Double bed:	1x
Cabins:	1
Toilets:	1x electric, Groco type K
Showers:	1x

Machinery

Port engine (Brand, type, hp, gearbox):	Caterpillar 3208 TA, 435 PK, Twin Disc MG 5061-A
Engine hours port engine:	+/- 1500
Star engine (Brand, type, hp, gearbox):	Caterpillar 3208 TA, 435 PK, Twin Disc MG 5061-A
Engine hours starboard engine:	+/- 1500
Main engines control (Brand and type):	Kobelt
Drive (Shaft, IPS, Jet):	Drive shaft
Shaft lubrication:	Waterlubricated



Prop (Number of blades, material):	5 blade
Generator (Brand, type, Kw):	Onan MDKAL-3366475, 7 KW,
Generator hours:	175
Bowthruster (Brand, type, elec/hyd):	Sidepower SP 85, Electric
Sternthruster (Brand, type, elec/hyd):	Ja
Electrical bilge pump:	3x Rule 2000
Oil change system:	Groco BMX3-60
Water pressure pump (Brand, model):	Paragon Junior PJR
Hot water system:	Seaward S1200, 42 Liter
Heating system (brand, model, type):	Webasto Airtop 5000, 5KW
Trim system:	Bennett trimtab 3812
Macerator pump:	Sealand T 12VDC
Steering system:	Hydraulic
Deckwash:	1x

Electrical system

DC system (V) AC system (V):	12V/230V
Inverter (V/W/Amp):	Victron 12V/2000W/80AMP
Battery charger (V/W/Amp):	Victron 12V/2000W/80AMP

Safety system

Fire alarm:	1x
-------------	----

Navigation system

Compass:	Ritchie
Depth meter:	Raymarine I70
VHF:	Raymarine Ray 70
AIS:	Receiver Raymarine
Autopilot:	Raytheon ST6001+

Equipment

Windlass:	Maxwell RC-80
Horn:	1x elektric



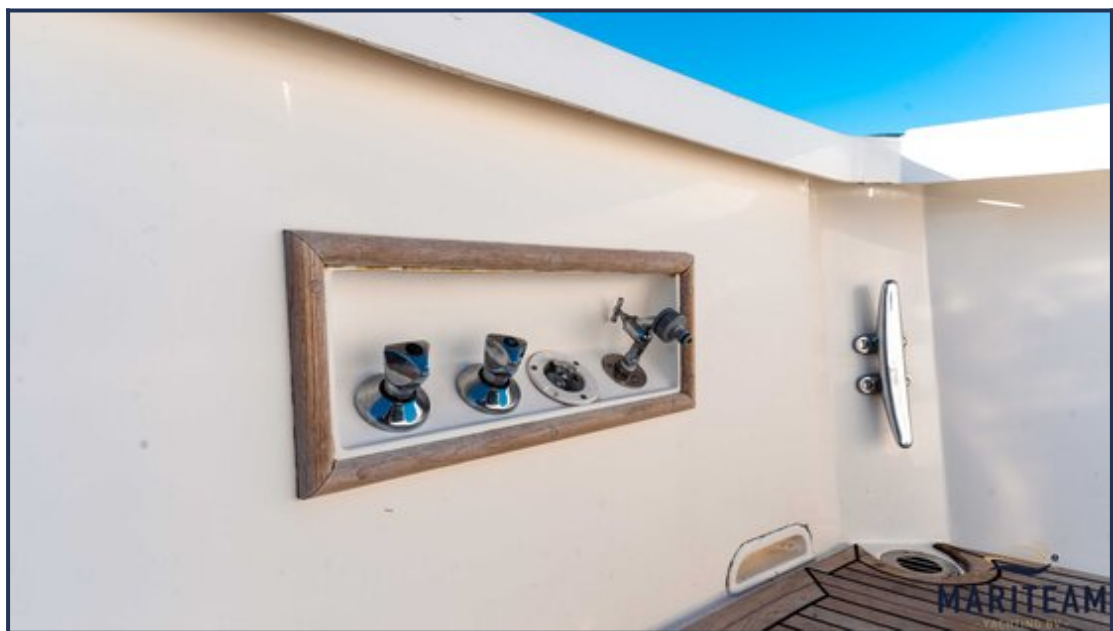


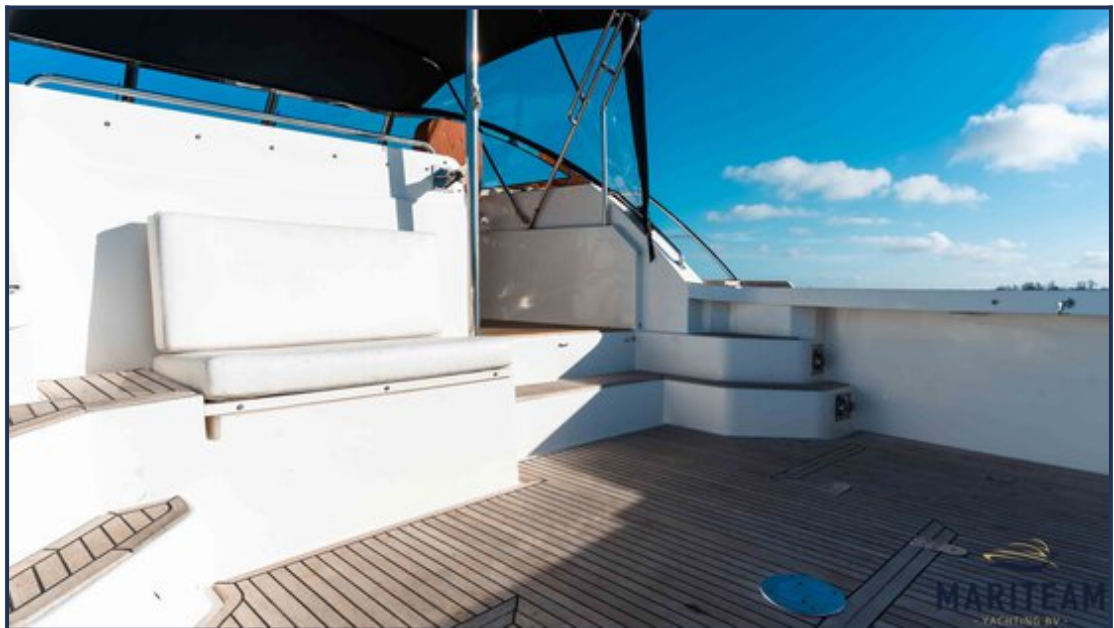


















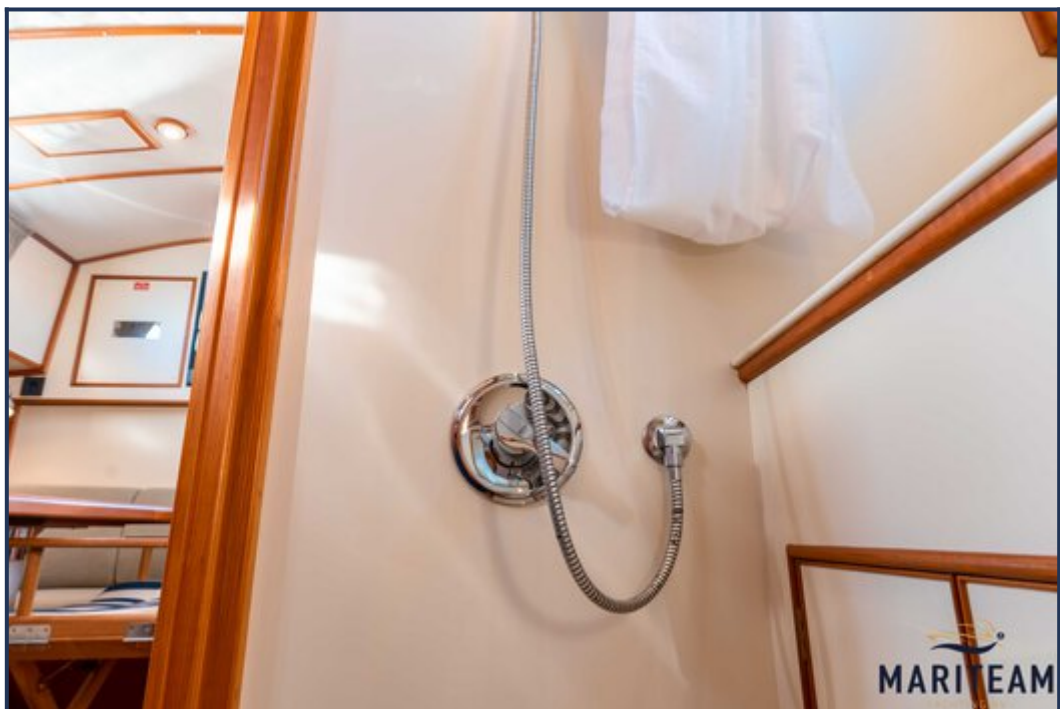


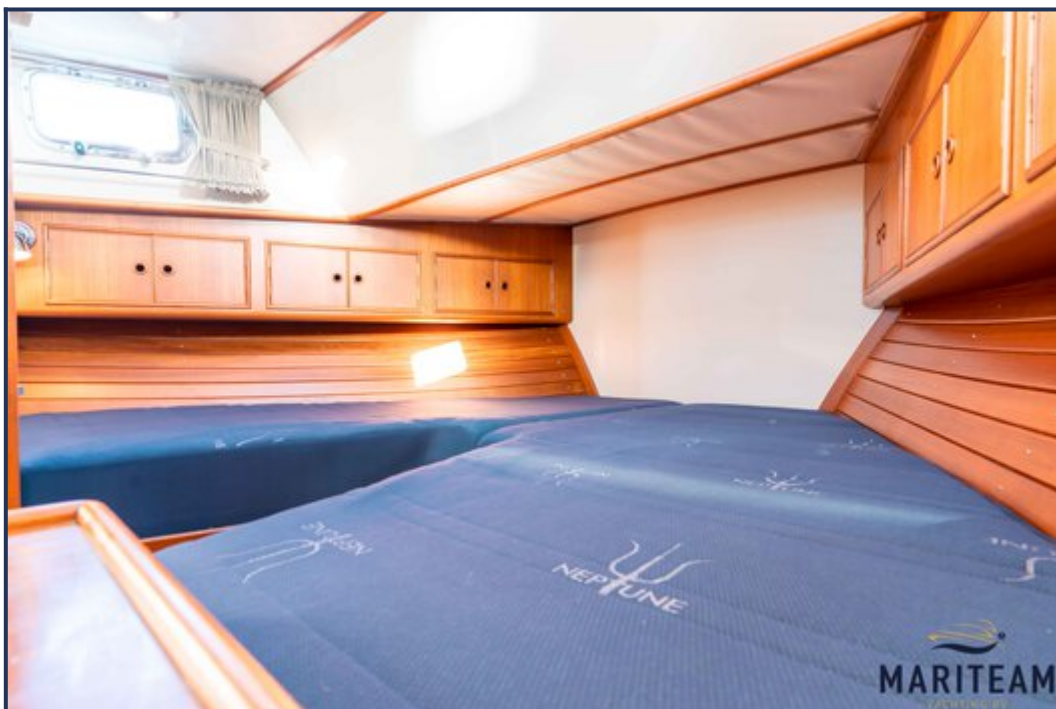
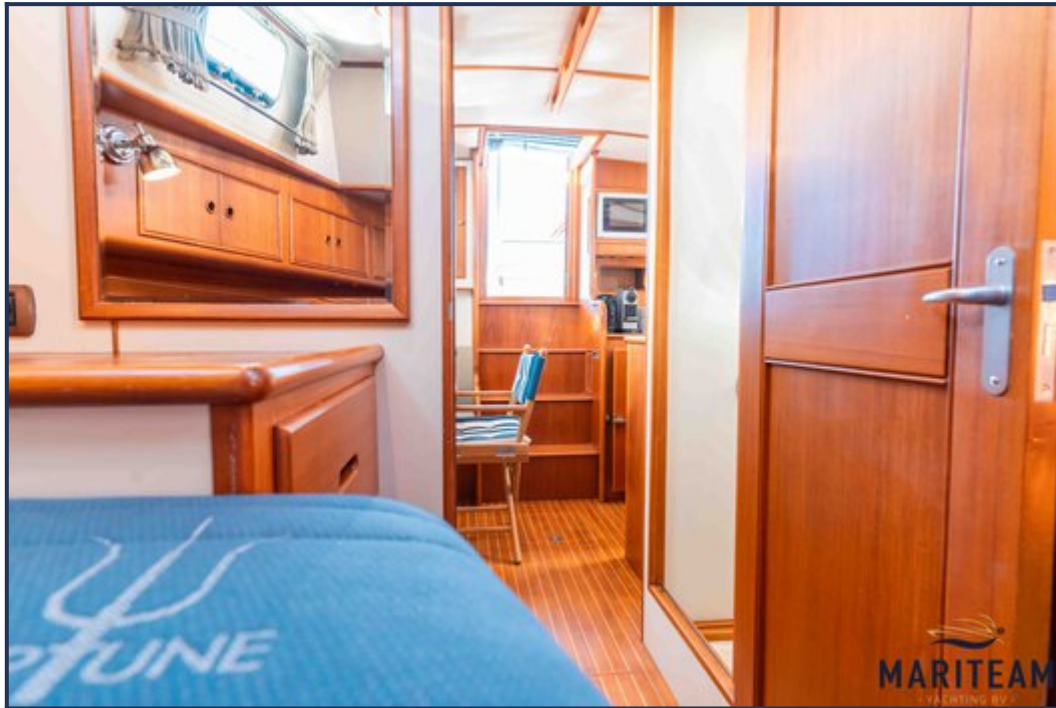


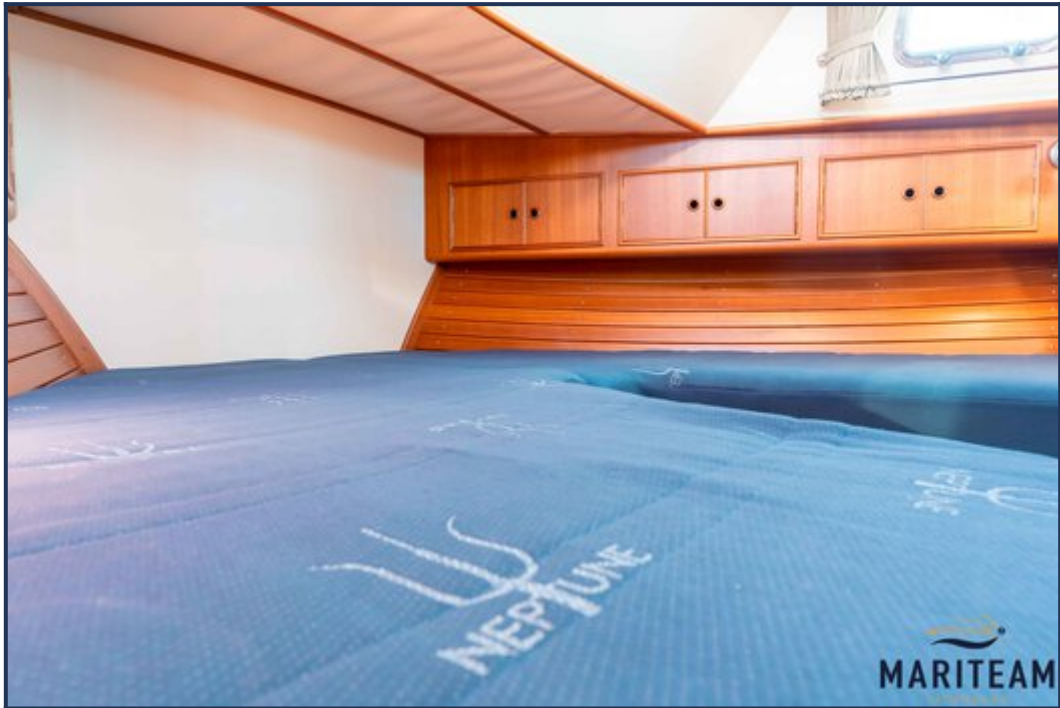




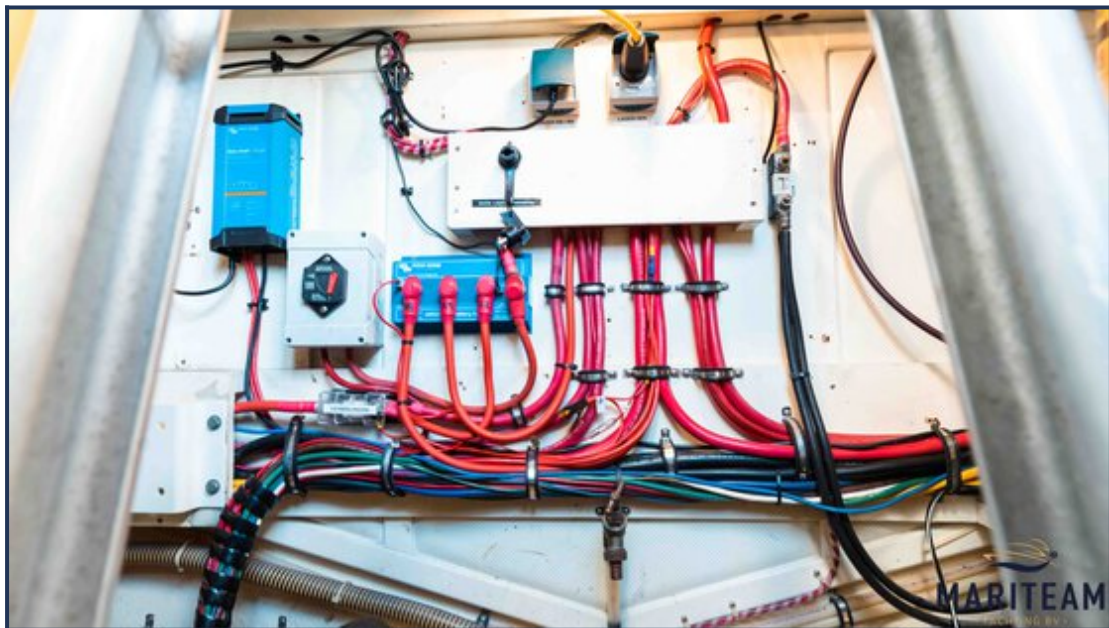




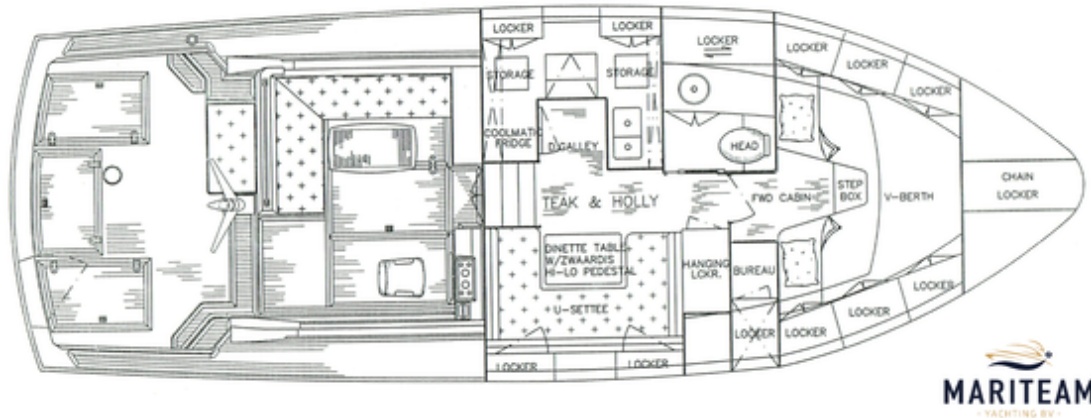








EASTBAY 38 ARRANGEMENT LAYOUT
38EB#0089



These particulars are given in good faith as supplied but cannot be guaranteed and cannot be used for contracts.