



MARITEAM

- YACHTING -



Grand Banks 42 Motoryacht 'No Ice'

LOA (m):	13.17 m
Beam (m):	4.27 m
Draft (m):	1.27 m
Year built:	2003
Engines:	2x 330hp Cummins
Cabins:	2
Homeport:	Malta
Price:	€ (not set)

The Grand Banks 42 Motoryacht is designed for those people who prefer longer trips. This 42 Motoryacht is one of the more specious designs of Grand Banks 42 and offers a two cabin layout with the rise and fall table in the saloon being able to be converted into a double bed.

No Ice has a Galley down layout which is equipped with a ceramic hob, electric oven, microwave and two Coolmatic refrigerators. Because of the Galley down there is a spacious salon with an L shaped couch and two bucket chairs which fit around the rise and fall table.

MARITEAM YACHTING

Ceresweg 20-B, 8938 BG Leeuwarden 📍 The Netherlands 📞 Phone +31 (0) 582 889254

info@mariteamyachting.nl 📧 www.mariteamyachting.nl

In the front of the Grand Banks you will find the guest cabin that has it's own shower-room with en-suite toilet and wash-hand basin. The aft cabin has the more popular freestanding bed with a shower room and separate electric toilet with wash-hand basin.

The Grand Banks is prepared for cruising with her 11 KW generator, reverse cycle air conditioning, washing machine and solar panels. 'No Ice' also carries a large 40 KG Rocna as her main anchor on 100 metres of G7 chain along with two spare anchors and a steadying sail. AIS and a ship's EPIRB are installed as part of her safety equipment.

This well-known displacement hull offers the best of both worlds, boasting economical and comfortable sailing with the two 330 hp Cummins engines. The engines and air-conditioning were serviced at the end of 2022.

Main specifications

Model:	42 Motoryacht
LOA (m):	13.17 m
Beam (m):	4.27 m
Draft (m):	1.27 m
Year:	2003
Hull Material:	GRP
Cabins:	2
Sleeping places:	4
Number of main engine(s):	2
Power of main engine(s) (hp):	330
Brand of main engine(s):	Cummins
Price:	€ (not set)
VAT status:	EU Payed
Draft (m):	1.27
HIN number:	MS-GNDD1526F303

General

Name :	No Ice
Type:	42 motoryacht
Length overall (m):	13.17
Beam (m):	4.27
Air draft (m):	3.99
Year built:	2003
Displacement (t):	21.96
Hull material:	GRP
Deck material:	GRP

Superstructure material:	GRP
Deck finish:	Teak
Window material:	Single glass
Fuel tank (Litre and material):	2 x 1135L
Freshwater Tank (Liter and material):	Forward – approx 580 litres, rear – approx 310 litres
Black water tank (Litre and material):	1 x 105L
Antifouling (Year):	2021
Maximum speed (Kn):	17
Cruising speed (Kn):	10-12

Accommodation

Stove:	Seaward Princess 3347 – 1310
Microwave:	Whirlpool Model AT328
Oven:	Seaward Princess 3347 – 1310
Refrigerator:	Coolmatic Model MDC-110 - 1 in galley, 1 in utility
Dish washer:	Miele G646SC
Washing machine:	Bosch Maxx 1000
Single berths:	2 x
Double bed:	1 / 2 x
Cabins:	2 x
Toilets:	1 forward Jabsco Electric – new 2019 1 rear Electric Groco – K-H
Showers:	Grohe thermostatic – 1 forward & 1 aft

Machinery

Port engine (Brand, type, hp, gearbox):	Cummins 6BTA 5.9-M3, 330 hp, ZF Marine 220 PL
Main engines control (Brand and type):	Glendinning + Synchroniser
Drive (Shaft, IPS, Jet):	Shaft
Shaft lubrication:	Water
Prop (Number of blades, material):	4
Rope cutter on propulsion:	Spurs Model Type D
Star engine (Brand, type, hp, gearbox):	Cummins 6BTA 5.9-M3, 330 hp, ZF Marine 220 PL
Generator (Brand, type, Kw):	Onan MDKAB - 11 kw
Bowthruster (Brand, type, elec/hyd):	Vetus
Electrical bilge pump:	3 x
Manual bilge pump:	WhaleGusher10AK3
Water pressure pump (Brand, model):	Sureflo 12 v (2019)
Hot water system:	Electric, (hot water also supplied from engines when in use) (2019)
Heating system (brand, model, type):	Marine air in saloon, aft cabin & forward cabin, reverse cycle
Airconditioning system (Brand, model):	Marine air in saloon, aft cabin & forward cabin, reverse cycle
Trim system:	Bennett Model 4809
Steering system:	Hydraulic
Deckwash:	Yes
Engine hours engine 1:	1575
Engine hours engine 2:	1575
Generator hours:	780

Electrical system



House battery (Number of battery,type, total Amp, year):	3 x AGM 200 amp 12 volt (2019)
Start battery (Number of battery,type, total Amp, year):	1 x AGM 220 amp 12 volt (2022)
DC system (V) AC system (V):	12 V / 220 V
Inverter (V/W/Amp):	Mastervolt 12.500
Battery charger (V/W/Amp):	100 amp Mastervolt (2017)

Safety system

Fire extinguisher engine room:	2 x Automatic fire extinguishers (serviced 2021)
Life raft:	Lalizas ISO 9650-1, 8 persons (2019)
EPIRB:	McMurdo Smartfinder 98 AIS (2021)

Navigation system

Helm position one:	Pilot house
Compass:	Ritchie
Gps plotter:	Raymarine E120 (2019)
Radar :	Raymarine RD 218 2Kw 18 inch Radome
Depth meter:	Raymarine ST60
Log:	Raymarine ST60
Wind meter :	Raymarine ST60
VHF:	Horizon Explorer GX 1700E (2019)
AIS:	EM-Trac B900 Class B (2021)
Autopilot:	Raymarine ST70001 + E12099
Rudder indicator:	Yes
Helm position two:	Fly bridge

Equipment

Anchor:	main 1 x 40kg Rocna, 1 x Fortress FX23 Aluminium, 1 x galvanised Grapnall
Windlass:	Lofran wired remote control
Gangway:	Besenzoni Italy - Model PI-382
Tender crane:	Mast with boom
Tender:	Honda Hon Wave 3.2m inflatable
Deck shower:	GRP





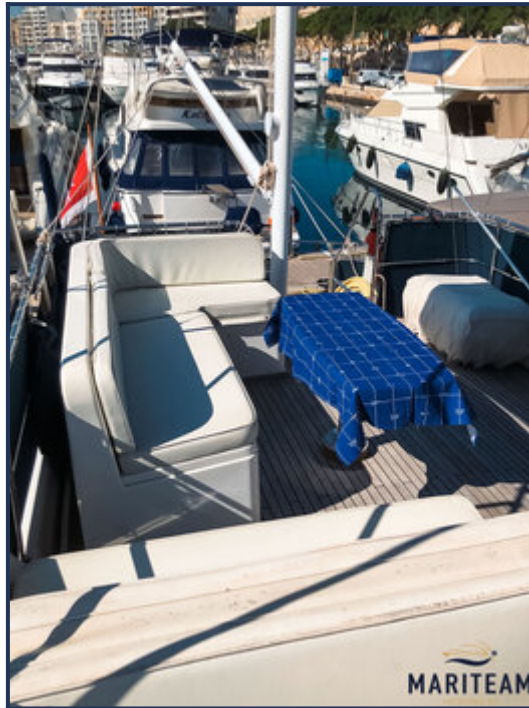




























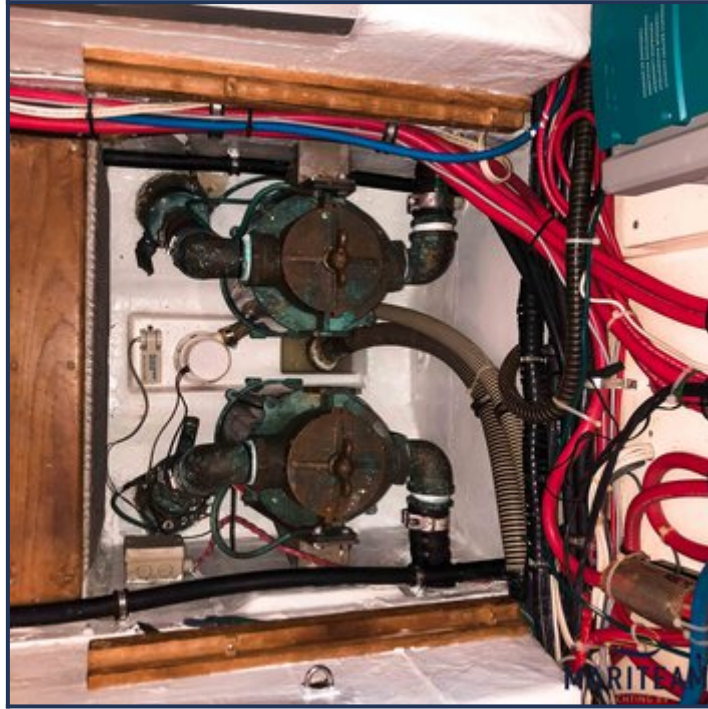
















These particulars are given in good faith as supplied but cannot be guaranteed and cannot be used for contracts.