



Selene 49 'Pilgrim'

LOA (m):	16.36 m
Beam (m):	4.78 m
Draft (m):	1.63 m
Shipyard:	Jet tern marine
Year built:	2009
Engines:	1x 330hp Cummins
Cabins:	2
Homeport:	Service office, Heeg
Price:	€ (not set)

The Selene 49, known as 'Pilgrim,' is a reputable and luxurious full displacement trawler by Selene Yachts. It offers additional headroom in the engine room and improved sailing capabilities in stormy seas. The layout includes two cabins with their own bathrooms, a well-equipped galley, and a cozy salon. Upgrades include new Garmin navigation screens and a wifi system. With reliable Cummins engine and bow/stern thrusters, 'Pilgrim' ensures comfortable and safe travels. Ready to welcome a new crew, it embodies the concept of power voyaging.

Main specifications

Model:	49
LOA (m):	16.36 m
Beam (m):	4.78 m
Draft (m):	1.63 m
Year:	2009
Hull Material:	GRP
Cabins:	2
Sleeping places:	4
Number of main engine(s):	1
Power of main engine(s) (hp):	330
Brand of main engine(s):	Cummins
Price:	€ (not set)
VAT status:	EU Payed
Draft (m):	1.63
HIN number:	CN-XJE48032A909
Year launched:	2010

General

Name :	Pilgrim
Shipyard:	Jet tern marine
Type:	49
Length overall (m):	16.36
Length waterline (m):	14.17
Beam (m):	4.78
Air draft (m):	4.25
Year built:	2009

CE-category:	A
Displacement (t):	35 fully loaded
Hull material:	GRP
Deck material:	GRP
Superstructure material:	GRP
Deck finish:	Teak
Window material:	Single safety glass
Fuel tank (Litre and material):	2 x 2460L
Freshwater Tank (Liter and material):	1 x 794L
Black water tank (Litre and material):	378L
Maximum speed (Kn):	10.5
Cruising speed (Kn):	7 - 8,5

Accommodation

Stove:	Siemens EU631BEF1E (new fan 2021) + grill on flybridge (2018)
Refrigerator:	Siemens
Freezer:	Siemens
Interior finish:	Cherry
Dish washer:	Miele
Washing machine/Dryer:	Whirlpool (2021)
Single berths:	2
Double bed:	1
Cabins:	2
Toilets:	2 x Tecma electrisch (2019)
Showers:	2
Combi oven/microwave:	Siemens

Machinery

Port engine (Brand, type, hp, gearbox):	Cummins, QSL, 330 hp
Main engines control (Brand and type):	Twin Disc, electronic
Drive (Shaft, IPS, Jet):	Shaft
Shaft lubrication:	Water
Prop (Number of blades, material):	4
Emergency engine (Brand, type, hp, gearbox):	Yanmar 56 hp
Generator (Brand, type, Kw):	Kohler 9 kW
Bowthruster (Brand, type, elec/hyd):	Sidepower 14hp electric
Sternthruster (Brand, type, elec/hyd):	Sidepower 14hp electric
Fuel polishing system:	ESI 1000 Re
Electrical bilge pump:	5 x
Manual bilge pump:	Gushi
Oil change system:	REVERSO 12 V
Watermaker:	Prewire (dismantled)
Water pressure pump (Brand, model):	Fresh + saltwater pressure pump, 2018
Hot water system:	Kabola hr400 Combi
Heating system (brand, model, type):	Kabola HR400 combi, central heating
Airconditioning system (Brand, model):	Cruisair in cabins + Panasonic in pilot house and salon (2019)
Stabilizer system:	NAIAD
Steering system:	Hydraulic
Deckwash:	1
Engine hours engine 1:	Ca. 3700
Engine hours emergency engine:	Ca. 60
Generator hours:	Ca. 1100

Electrical system

House battery (Number of battery,type, total Amp, year):	8 x Varta 190 ah (2022)
Start battery (Number of battery,type, total Amp, year):	2 x engine Exide EE1853 (2022), 2 x generator (2022)
Bowthruster battery (Number of battery,type, total Amp, year):	Zenith AGM 12V 180 Ah/ 220 Ah
Sternthruster battery (total Amp, year):	AGM 2019
DC system (V) AC system (V):	24V / 220V
Inverter (V/W/Amp):	Mastervolt combi Ultra 24/3500-100
Battery charger (V/W/Amp):	Mastervolt 100 amp + Mastervolt 75 amp

Safety system

Fire extinguisher engine room:	FIREBOY MA2-650-FM200
High water alarm:	present
Radar reflector:	present
Life raft:	Life raft, Viking 6UKL Rescue 2021 (next service 10/2023)
EPIRB:	2

Navigation system

Helm position one:	Pilot house
Compass:	Ritchie
Gps plotter:	Garmin 2021 (2 x 18")
Radar screen:	Garmin

Radar :	Garmin
Depth meter:	Garmin
Log:	Garmin
Wind meter :	Garmin
VHF:	1 x Icom M424GE and 1 x Tron TR30 handheld.
AIS:	1 x AIS Comrod AV60B18 (2021)
Autopilot:	Garmin
Rudder indicator:	VDO
Helm position two:	Flybridge

Equipment

Anchor:	1 x Mantus 2 = 75 kg with 50m of 13mm chain. (in the PS anchor box there is another 50m of 13mm chain)
Windlass:	MUIR HR2500 Electrical (2022 overhauled)
Gangway:	Opacmare (2019)
Tender crane:	STEELHEAD ES 1000
Tender:	AB Rib 9,5 AL 2020 with 20hp Mercury 2020
Search light:	ACR
Horn:	Kahlenberg airhorn









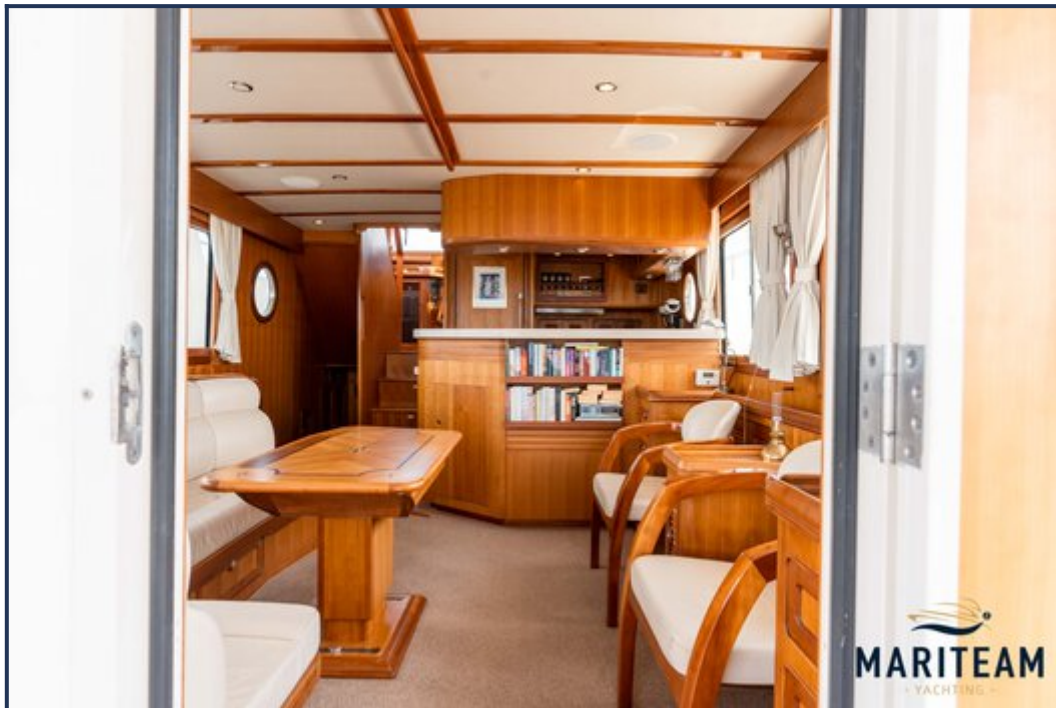




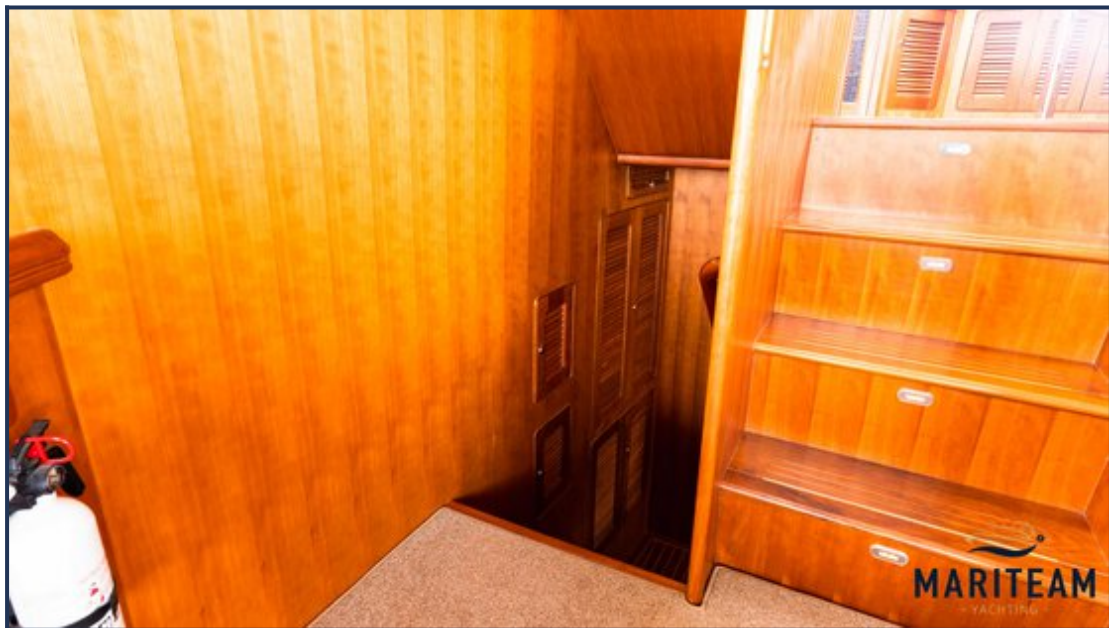


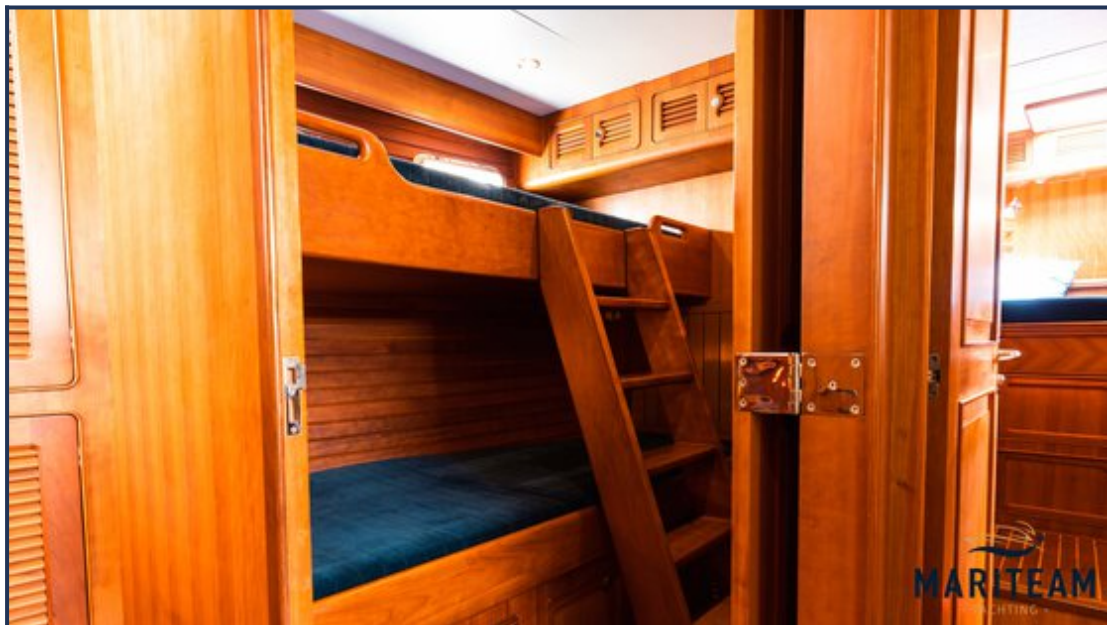




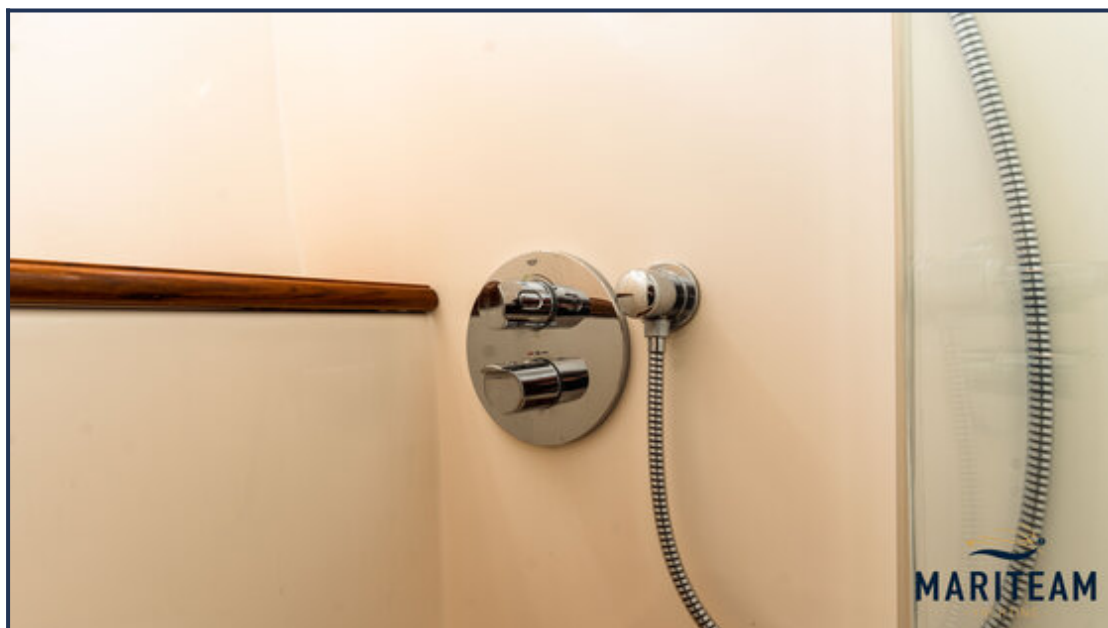


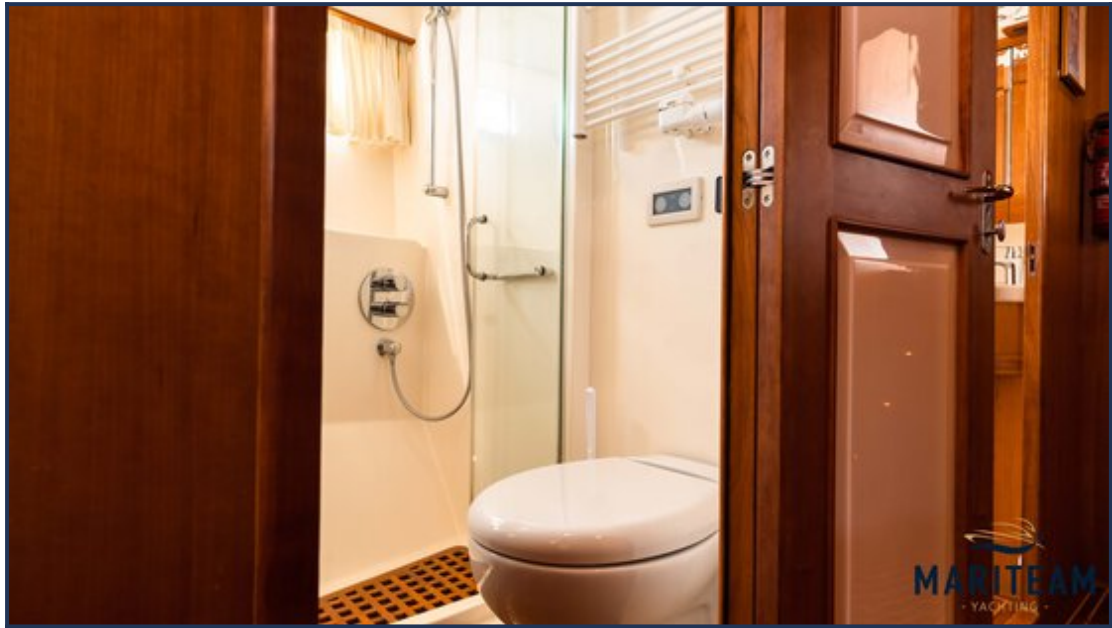


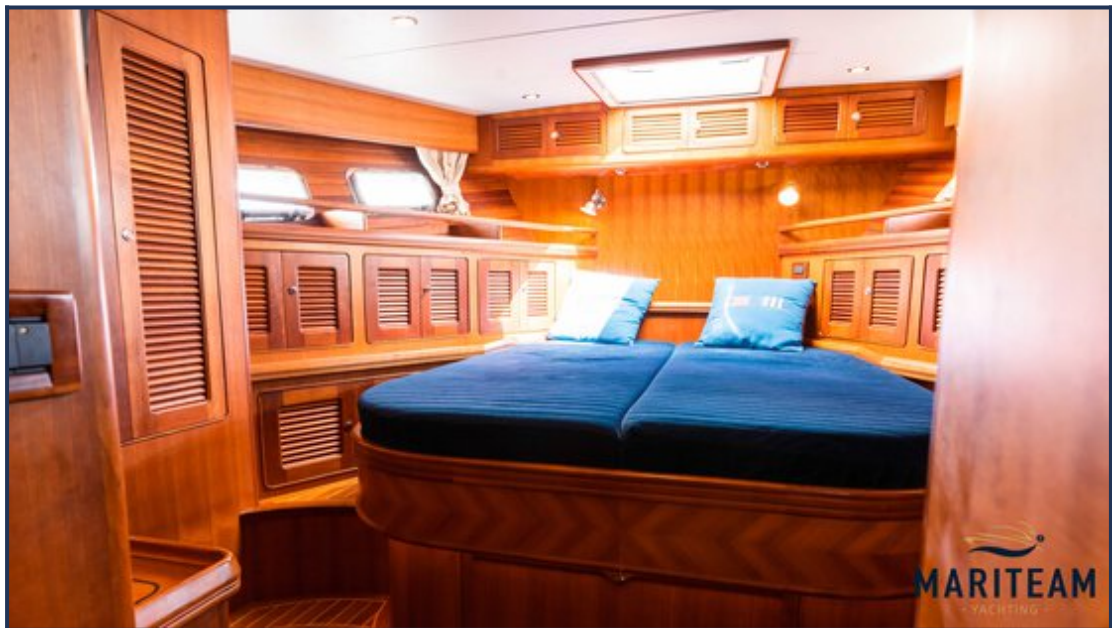




































These particulars are given in good faith as supplied but cannot be guaranteed and cannot be used for contracts.