



# MARITEAM

- YACHTING -



## Grand Banks 42 Classic 'Lone'

LOA (m):	13.17 m
Beam (m):	4.29 m
Draft (m):	1.27 m
Engines:	2x 300hp Caterpillar
Cabins:	2
Homeport:	Germany
Price:	€ (not set)

With 1560 construction numbers, the Grand Banks 42 is the most built model, and therefore one of the most successful Grand Banks designs. The 42 classic is therefore known by enthusiasts as the original model of Grand Banks. The advantage of the classic model is that both the front and the aft cabin are spacious enough for their own bathroom with toilet and shower and because the cabins can be found in the front and back of the ship, a piece of privacy is provided as well.

In the kitchen of the 'Lone' is an induction hob with a combi-microwave underneath. There is also an Isotherm fridge in the kitchen to keep the drinks and food cool.

### MARITEAM YACHTING

De Draei 29, 8621 CZ Heeg 📍 The Netherlands 📞 Phone +31 (0) 582 889254  
[info@mariteamyachting.nl](mailto:info@mariteamyachting.nl) 🌐 [www.mariteamyachting.nl](http://www.mariteamyachting.nl)



# MARITEAM

- YACHTING -

The aft cabin is equipped with a double bed on port side and has an extra single bed on starboard. The spacious and cozy salon has a corner sofa with opposite a double sofa for extra seating. On top of the flybridge are the well-known sofas that are equipped with new cushions. The exterior of the 'Lone' has also recently been polished and the lacquering will be completed in the coming period.

With the two Caterpillar 300 hp engines that have had a major service turn at the end of 2021, the 'Lone' can achieve a maximum speed of 16 knots. In addition, the tanks were professionally cleaned at the end of 2021 and with that the 'Lone' also leaves a neat impression in the engine compartment.

## MARITEAM YACHTING

De Draei 29, 8621 CZ Heeg 📍 The Netherlands 📞 Phone +31 (0) 582 889254  
[info@mariteamyachting.nl](mailto:info@mariteamyachting.nl) 🌐 [www.mariteamyachting.nl](http://www.mariteamyachting.nl)

## Main specifications

Model:	42 Classic
LOA (m):	13.17 m
Beam (m):	4.29 m
Draft (m):	1.27 m
Year:	1993
Hull Material:	GRP
Cabins:	2
Sleeping places:	5
Number of main engine(s):	2
Power of main engine(s) (hp):	300
Brand of main engine(s):	Caterpillar
Price:	€ (not set)
VAT status:	EU Betaald
HIN number:	GNDD1273B393

## General

Name :	Lone
Cruising speed (Kn):	14 upper cruising / 9 lower cruising
Maximum speed (Kn):	16
Air draft (m):	4.34
Fuel tank (Litre and material):	2 x 1135L, Steel
Freshwater Tank (Liter and material):	1200L
Black water tank (Litre and material):	120L
Hull material:	GRP
Deck material:	GRP
Deck finish:	Teak

## Accommodation

Cabins:	2
Double bed:	1
Single berths:	2
Showers:	2
Toilets:	2 x electric
Heating system (brand, model, type):	Airtronic
Stove:	KKT Kolbe 4, Induction
Combi oven/microwave:	Siemens Microwelle Plus
Refrigerator:	Isotherm
Freezer:	freezer compartment

## Machinery

Main engines control (Brand and type):	Morse
Port engine (Brand, type, hp, gearbox):	Caterpillar 3116, 300 hp
Engine hours port engine:	+/- 2600
Star engine (Brand, type, hp, gearbox):	Caterpillar 3116, 300 hp
Engine hours starboard engine:	+/- 2600
Steering system:	Hydraulic
Drive (Shaft, IPS, Jet):	Shaft
Shaft lubrication:	Water lubricated
Prop (Number of blades, material):	4
Generator (Brand, type, Kw):	Onan 16.0W
Generator hours:	565
Bowthruster (Brand, type, elec/hyd):	Vetus

Hot water system:	Isotherm
Trim system:	Bennet

## Electrical system

DC system (V) AC system (V):	12V / 220V
Battery charger (V/W/Amp):	Mastervolt Chargemaster 12/35-3
House battery (Number of battery,type, total Amp, year):	Starline 210Ah, 1200A (2019)
Start battery (Number of battery,type, total Amp, year):	2 x 180 ah

## Safety system

Life raft:	Seatec 4 persons
Electrical bilge pump:	2 x
Manual bilge pump:	1 x
Horn:	Yes

## Navigation system

Compass:	Yes
Gps plotter:	Yes
Radar :	Simrad
Autopilot:	Simrad
Rudder indicator:	Simrad IS20
Log:	Autohelm speed
Depth meter:	Autohelm depth

VHF: Sailor 6215

---

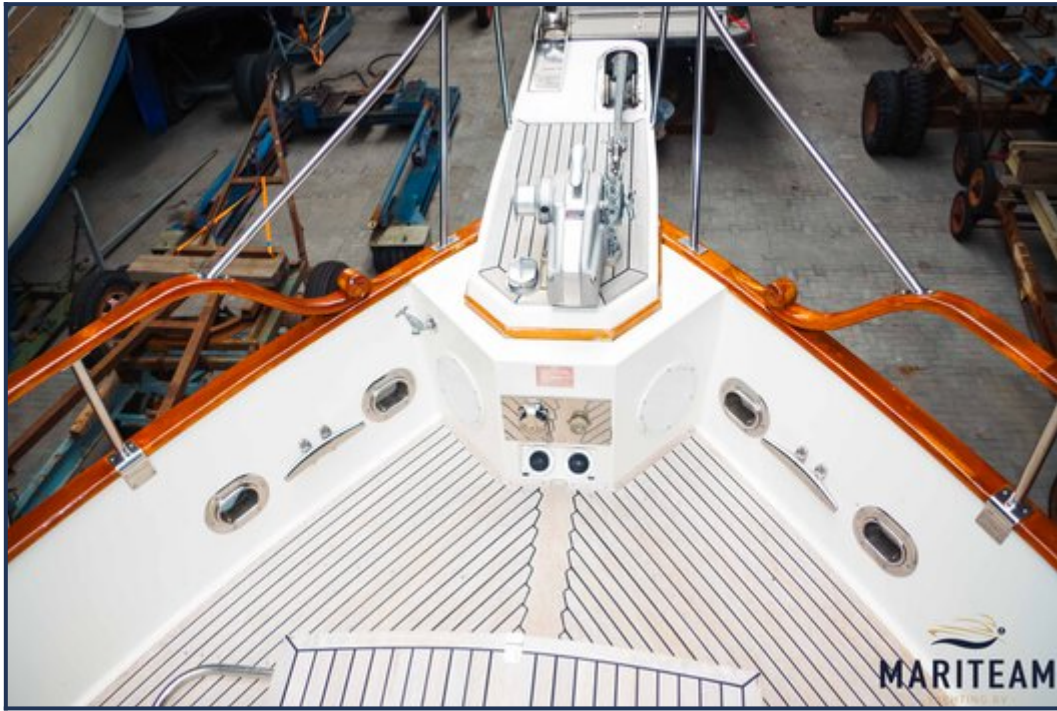
## Equipment

Tender:	-
Tender crane:	Mat with boom
Anchor:	Yes
Windlass:	Lofrans Tigres 1000W
Deckwash:	1 x





















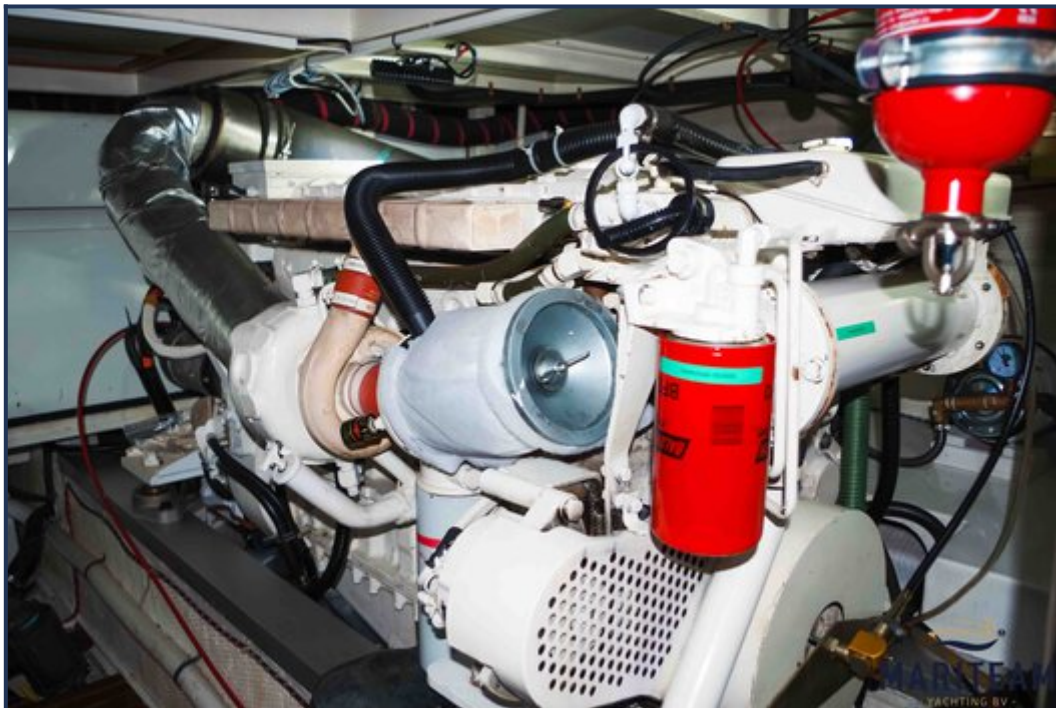


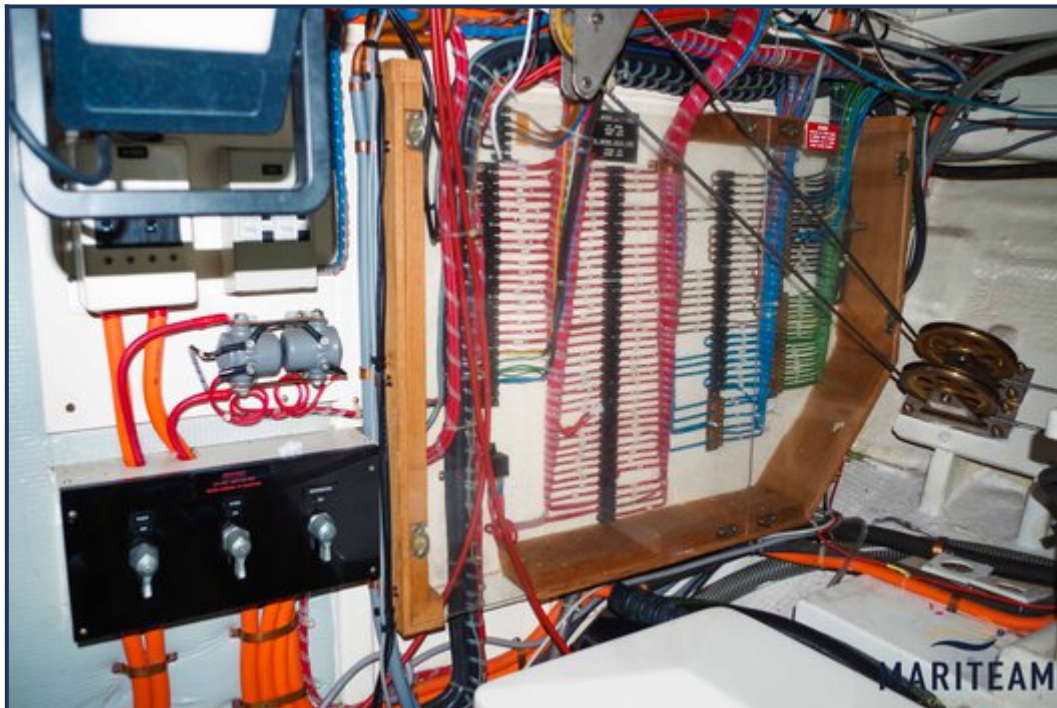


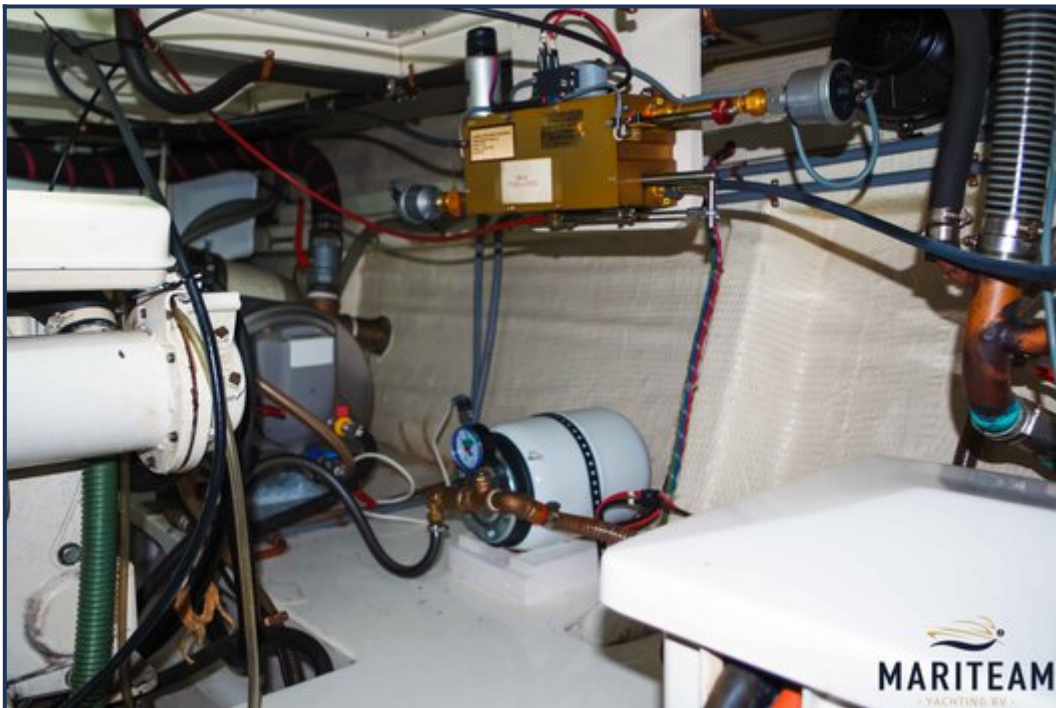


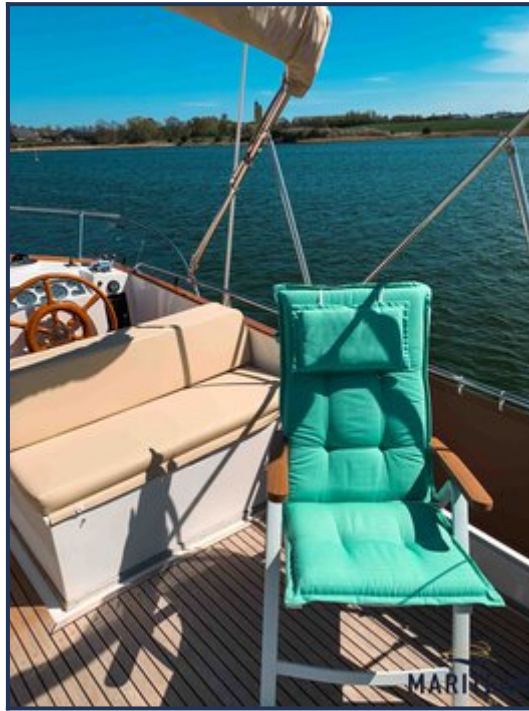












*These particulars are given in good faith as supplied but cannot be guaranteed and cannot be used for contracts.*