



Grand Banks 42 Europa 'HELENE'

LOA (m):	13.17 m
Beam (m):	4.29 m
Draft (m):	1.27 m
Engines:	2x 250hp Cummins
Cabins:	2
Homeport:	Germany
Price:	€ 279,000

The Grand Banks 42 Europa 'Helene' features teak doors that block the wind on the aft deck. Introduced in 1987, this classic and highly sought-after yacht offers a timeless design and excellent performance. The spacious interior includes two cabins, a bathroom, and a generous salon with an L-shaped sofa and a three-seater sofa. Attention to detail is evident with spring-loaded doors, illuminated compartments, and a stereo system connected to the TV. Powered by two 250 hp Cummins engines and equipped with bow and stern thrusters, it reaches a speed of 16 knots and provides stability for long-distance cruising.

Main specifications

Model:	42 Europa
LOA (m):	13.17 m
Beam (m):	4.29 m
Draft (m):	1.27 m
Year:	1992
Hull Material:	GRP
Cabins:	2
Sleeping places:	4
Number of main engine(s):	2
Power of main engine(s) (hp):	250
Brand of main engine(s):	Cummins
Price:	€ 279,000
VAT status:	EU paid

General

Air draft (m):	4.22 top of windshield
Deck material:	GRP
Deck finish:	Teak
Window material:	Single glass
Fuel tank (Litre and material):	2271 L
Freshwater Tank (Liter and material):	1022 L
Black water tank (Litre and material):	113 L
Antifouling (Year):	januari, 2022
Maximum speed (Kn):	16
Cruising speed (Kn):	8

Accommodation

Stove:	Princess 3347 Ceran, electrisch (2016)
Oven:	Princess (2016)
Refrigerator:	Isotherm compact (2018)
Freezer:	Waeco cfx 40 (2018)
Washing machine:	Candy
Single berths:	2
Double bed:	1
Cabins:	2
Toilets:	1,
Showers:	1
Outside shower:	1

Machinery

Port engine (Brand, type, hp, gearbox):	Cummins 6TBA 5,9-M1, 250 pk
Drive (Shaft, IPS, Jet):	Drive shaft
Shaft lubrication:	Waterlubricated
Prop (Number of blades, material):	4
Star engine (Brand, type, hp, gearbox):	Cummins 6TBA 5,9-M1, 250 pk
Generator (Brand, type, Kw):	Onan MDKD-P, 230V / 50Hz / 6,5 Kva
Bowthruster (Brand, type, elec/hyd):	Vetus BOW 12512, 125kgf (8pk)
Sternthruster (Brand, type, elec/hyd):	Vetus BOW 12512, 125kgf (8pk)
Electrical bilge pump:	2
Manual bilge pump:	1
Oil change system:	(2022)

Water pressure pump (Brand, model):	Paragon pjr
Hot water system:	Seaward S1150
Heating system (brand, model, type):	Webast Air Top 5500 Evo Comfort (2018)
Trim system:	Bennet
Steering system:	SeaStar hydraulic
Deckwash:	1
Engine hours engine 1:	+/- 3700
Engine hours engine 2:	+/- 3700
Generator hours:	431

Electrical system

House battery (Number of battery,type, total Amp, year):	2 x AGM 200 Ah (2019)
Start battery (Number of battery,type, total Amp, year):	Generator AGM 80Ah ('17) 1 x AGM 200 Ah (2018)
Bowthruster battery (Number of battery,type, total Amp, year):	1 x AGM 200 Ah (2017)
Sternthruster battery (total Amp, year):	1 x AGM 200 Ah (2017)
DC system (V) AC system (V):	12 V / 220 V
Inverter (V/W/Amp):	Mastervolt Mass 12/2000-230V
Battery charger (V/W/Amp):	Mastervolt Chargemaster 12/100-3 (2018)

Safety system

Radar reflector:	Tri-Lens
Life raft:	DSB, 10 personen, Solas B (2022)

Navigation system

Helm position one:	Salon
Compass:	Danforth
Gps plotter:	Furuno GPS-31
Radar screen:	Raymarine A90 Wifi-touch Multifunctioneel display (2017)
Radar :	Raymarine Digital, Radom, 18" 4 kW
Depth meter:	Raymarine ST60 + (Tridata)
Log:	Raymarine ST60 + (Tridata)
VHF:	Furuno FM-2721 en Raymarine Ray60 (2017)
Autopilot:	Raymarine ST7001 (ACU-400, EV1, new pump 2021)
Rudder indicator:	VDO
Helm position two:	Flybridge

Equipment

Anchor:	27 kg anchor with 50 meter chain (RVS)
Windlass:	Lofrans Tigres 1500W (2019)
Gangway:	1 x removable (2018)
Tender crane:	Manual
Tender:	Doering Goldbutt (11") with Torqeedo 1003 (2018)
Horn:	Fiamm MT-NA



















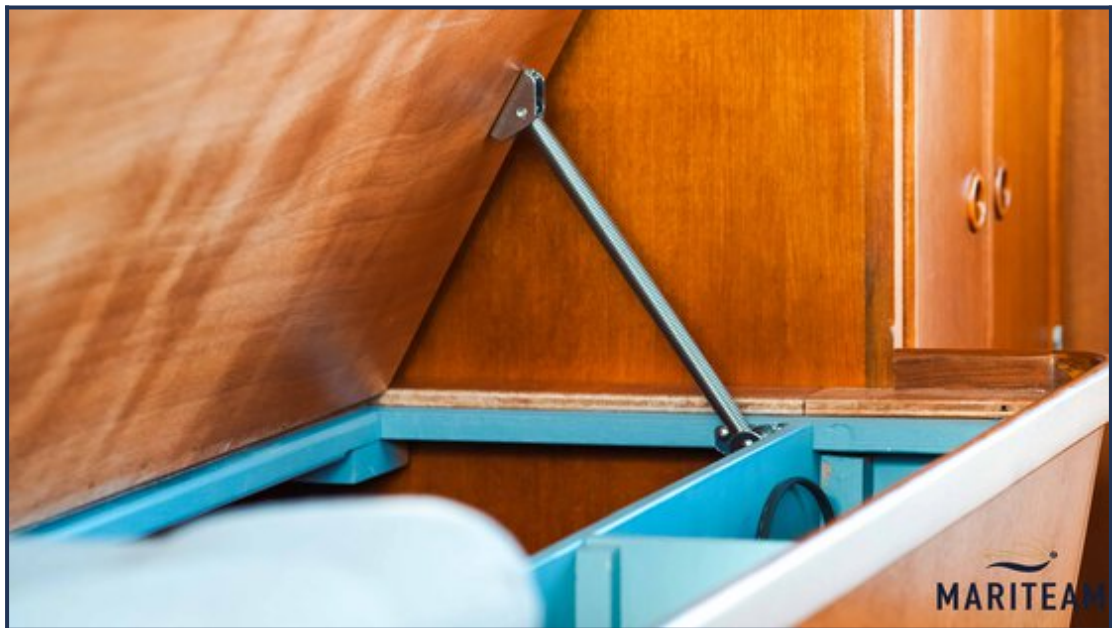
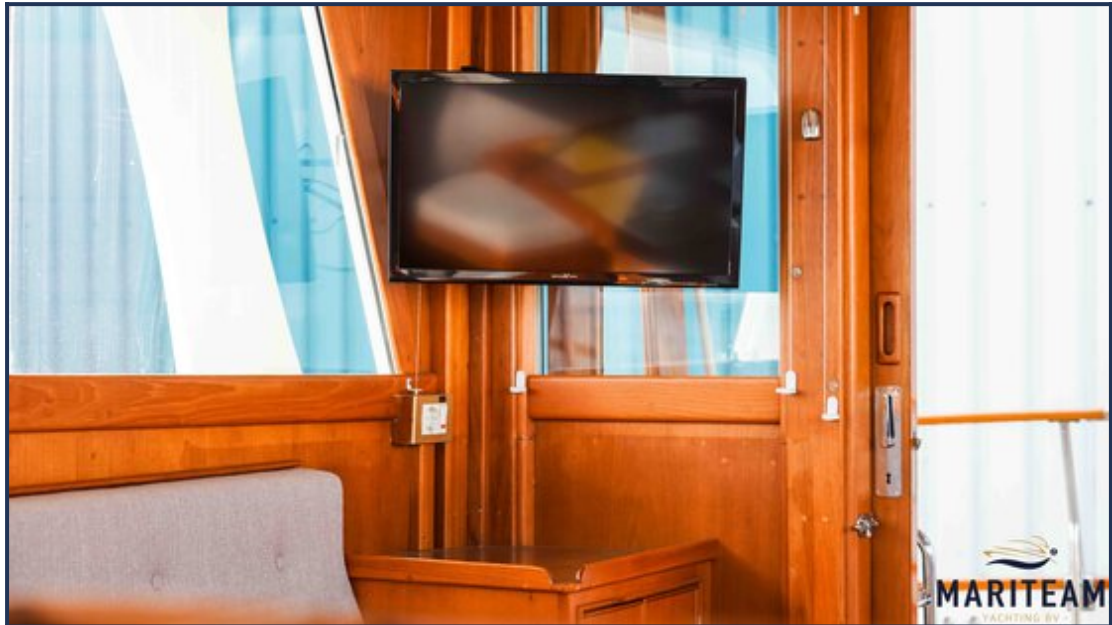




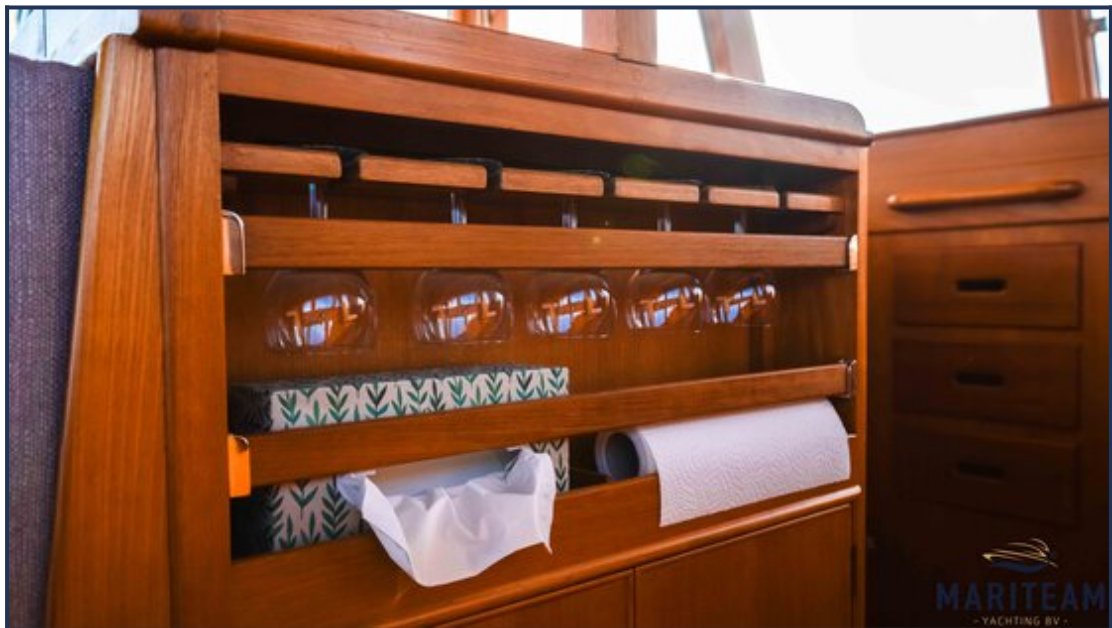






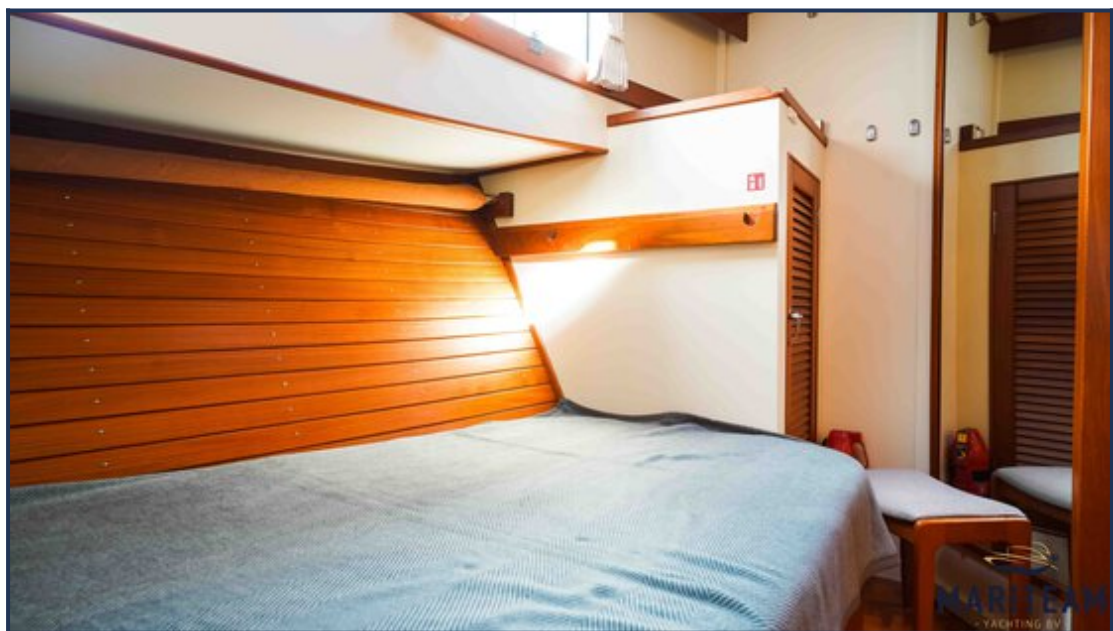


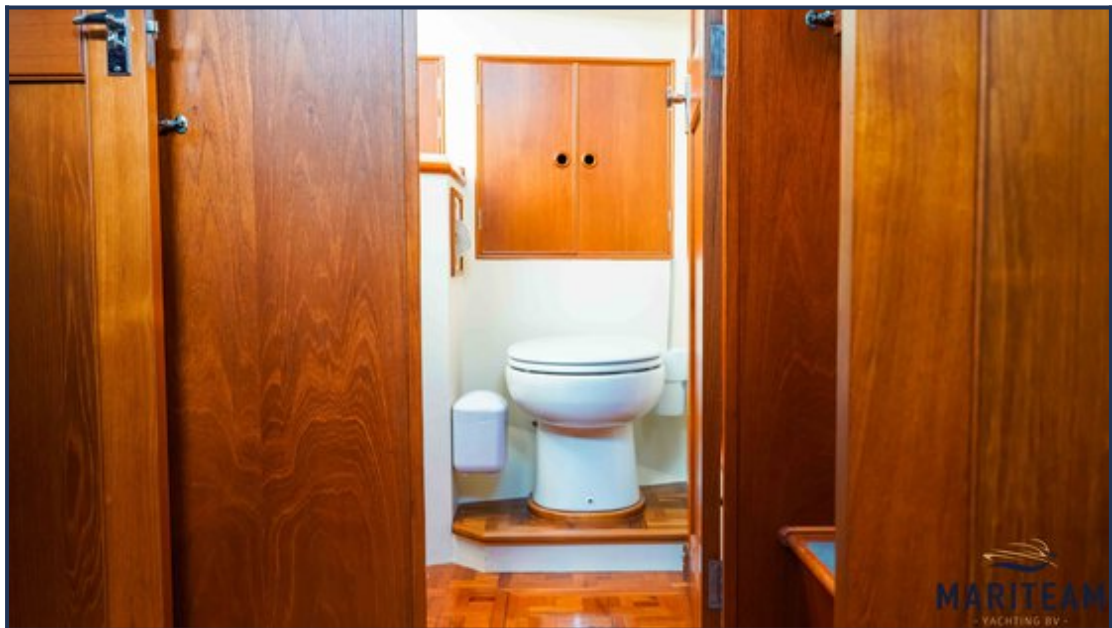


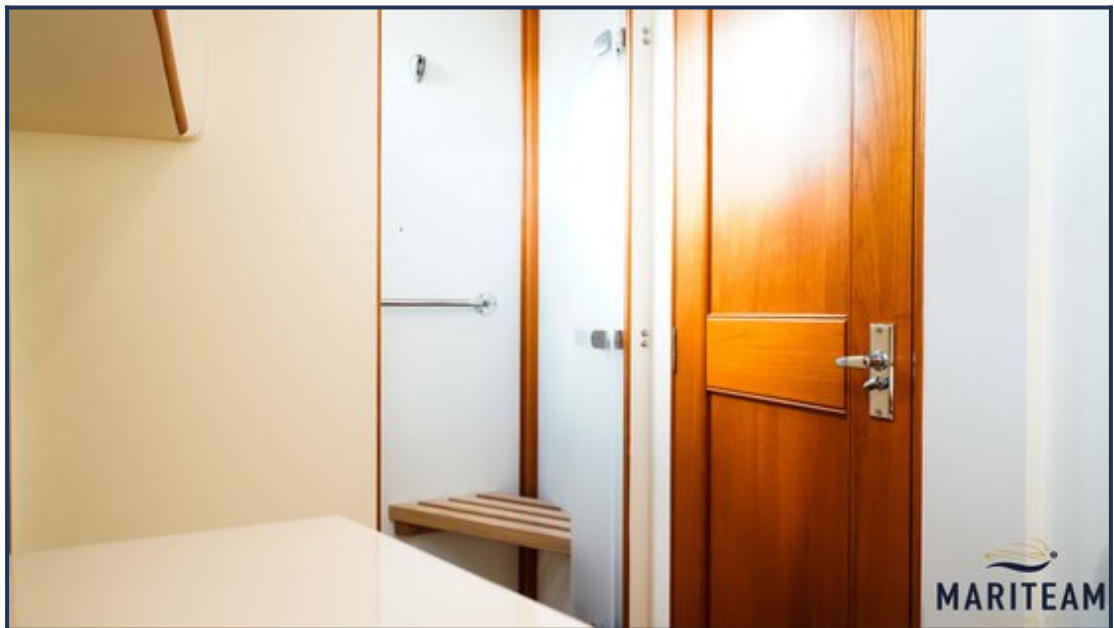


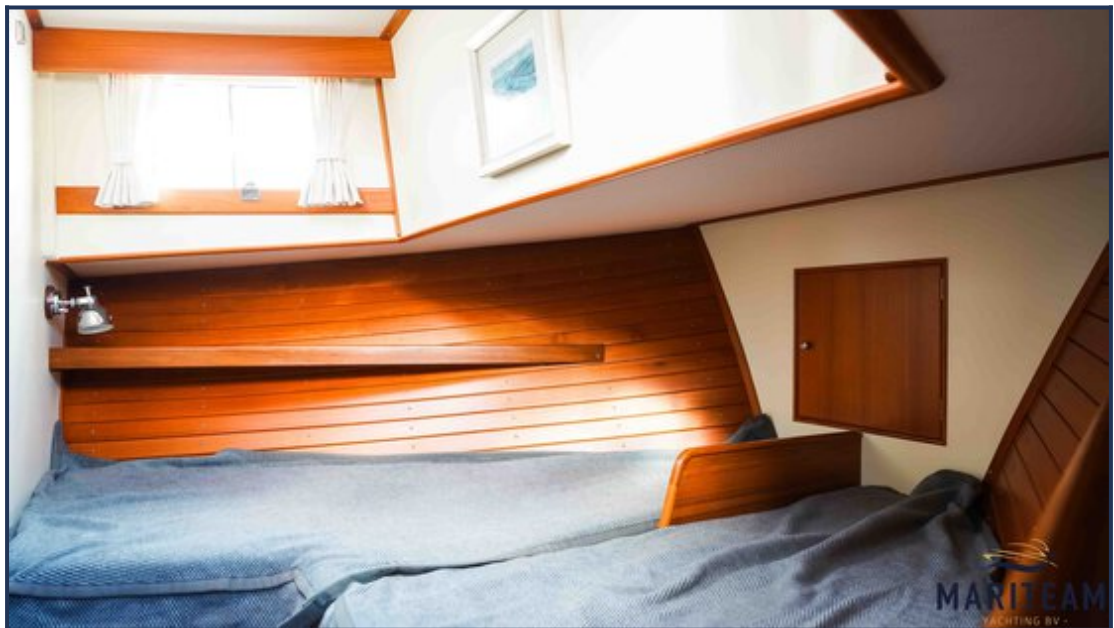
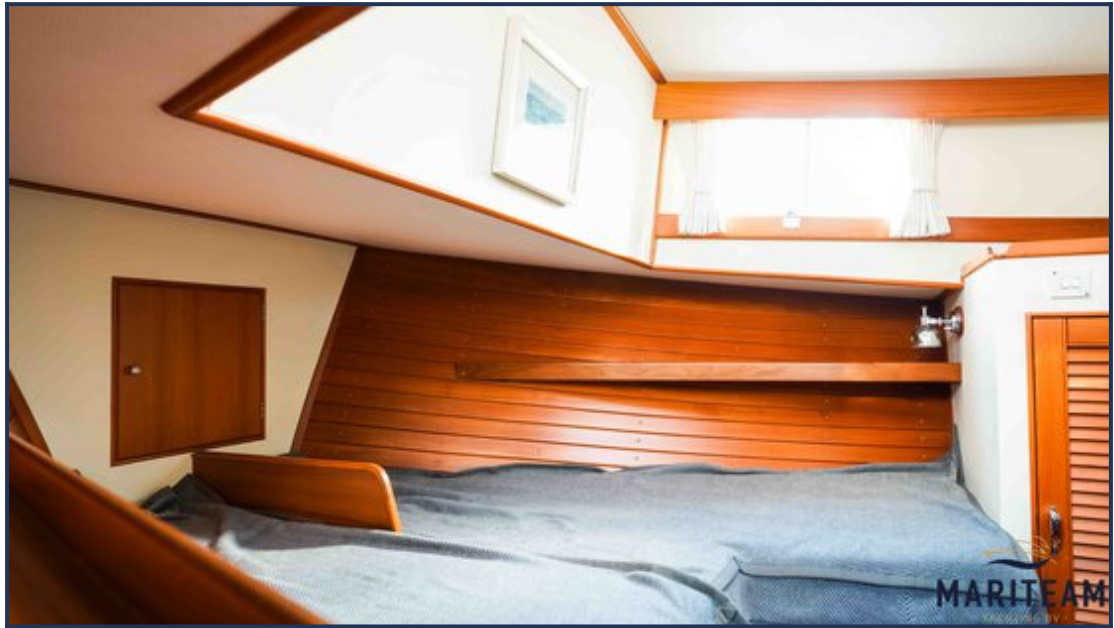


















These particulars are given in good faith as supplied but cannot be guaranteed and cannot be used for contracts.