



Grand Banks 36 Classic Nabataea

LOA (m):	11.07 m
Beam (m):	3.71 m
Draft (m):	1.19 m
Engines:	2 x 120hp Ford
Cabins:	2
Homeport:	Service office, Heeg
Price:	€ (not set)

With more than 1200 examples, the Grand Banks 36 is one of the most popular models built at the time. The long-keeled displacement hull provides stability, which gave the Grand Banks 36 a seaworthy reputation.

Over the years, different layouts have been offered. For example, the Nabataea has a two-cabin layout with a cabin in the back of the boat, where a double and another one-person bed can be found. The advantage of a classic model is that both cabins are equipped with their own toilet. In the ship there are two manual toilets and a shower. The ship's kitchen is equipped with a three-burner gas stove, an oven and a Coolmatic refrigerator.



The Nabataea is powered by two times 120 hp Ford Lehman engines.

Nabataea, a beautiful original Grand Banks 36 Classic.

MARITEAM YACHTING

De Draei 29, 8621 CZ Heeg 📍 The Netherlands 📞 Phone +31 (0) 582 889254
info@mariteamyachting.nl 📧 www.mariteamyachting.nl

Main specifications

Model:	36 Classic
LOA (m):	11.07 m
Beam (m):	3.71 m
Draft (m):	1.19 m
Year:	1979
Hull Material:	GRP
Cabins:	2
Sleeping places:	5
Number of main engine(s):	2
Power of main engine(s) (hp):	120
Brand of main engine(s):	Ford
Price:	€ (not set)
VAT status:	EU Payed

General

Name :	Nabataea
Deck material:	GRP
Deck finish:	Teak
Window material:	Single glass
Fuel tank (Litre and material):	1628L, Steel
Freshwater Tank (Liter and material):	630L, Stainless steel
Black water tank (Litre and material):	-
Antifouling (Year):	2019
Cruising speed (Kn):	7

Accommodation

Stove:	Eno marine 3 burner gas
Oven:	ENO
Refrigerator:	Coomatic RD110B
Freezer:	1 x freezer
Single berths:	1
Double bed:	2
Toilets:	1 x manually
Showers:	1 x

Machinery

Port engine (Brand, type, hp, gearbox):	Ford Lehman 120hp, 2715E
Engine hours port engine:	4029
Star engine (Brand, type, hp, gearbox):	Ford Lehman 120hp, 2715E
Engine hours starboard engine:	4119
Drive (Shaft, IPS, Jet):	Drive shaft
Shaft lubrication:	Water lubricated
Generator (Brand, type, Kw):	Panda Fischer
Generator hours:	283
Electrical bilge pump:	1 x
Manual bilge pump:	1 x
Heating system (brand, model, type):	aberspächer
Steering system:	Mechanic

Electrical system

House battery (Number of battery,type, total Amp, year):	Wilco 72511 12V 225Ah 1150A(EN)(2017)
Start battery (Number of battery,type, total Amp, year):	Bosch S5 013 830A (EN) 100Ah 12 V(2017)
DC system (V) AC system (V):	12V / 220 V
Battery charger (V/W/Amp):	Mastervolt 12/25 - 3

Safety system

Fire extinguisher engine room:	Flexcon
--------------------------------	---------

Navigation system

Compass:	VDO
Gps plotter:	Furuno
Radar screen:	Raytheon SL70
Radar :	Raytheon
Depth meter:	VDO
Log:	VDO
VHF:	Shipmate

Equipment

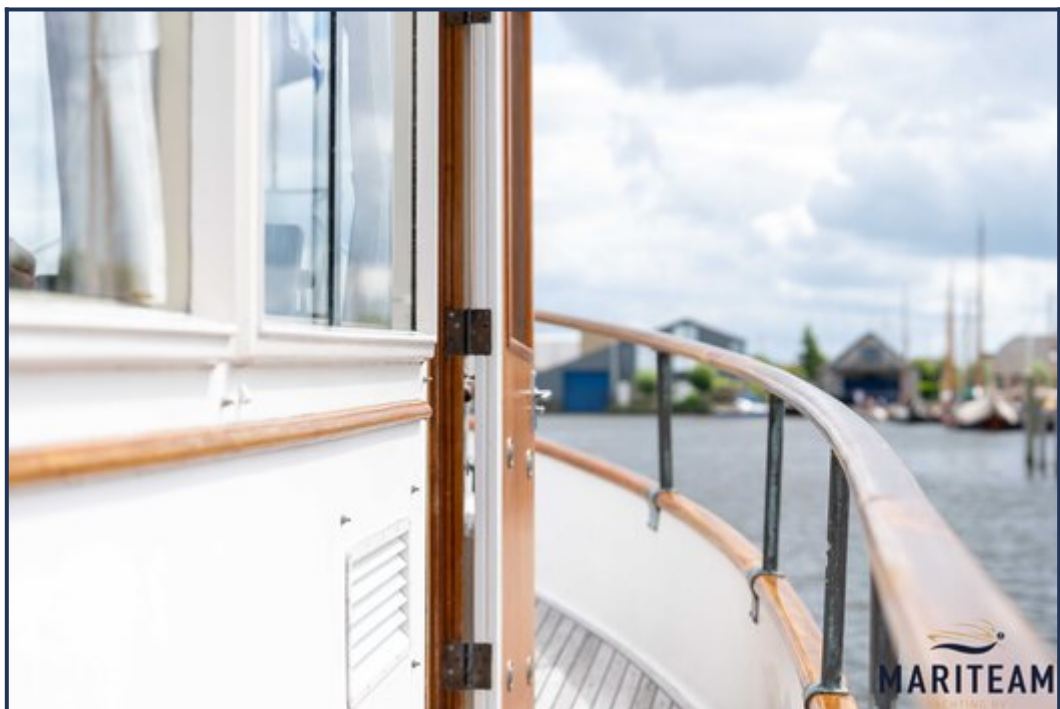
Anchor:	1 x 20kg
Windlass:	1 x



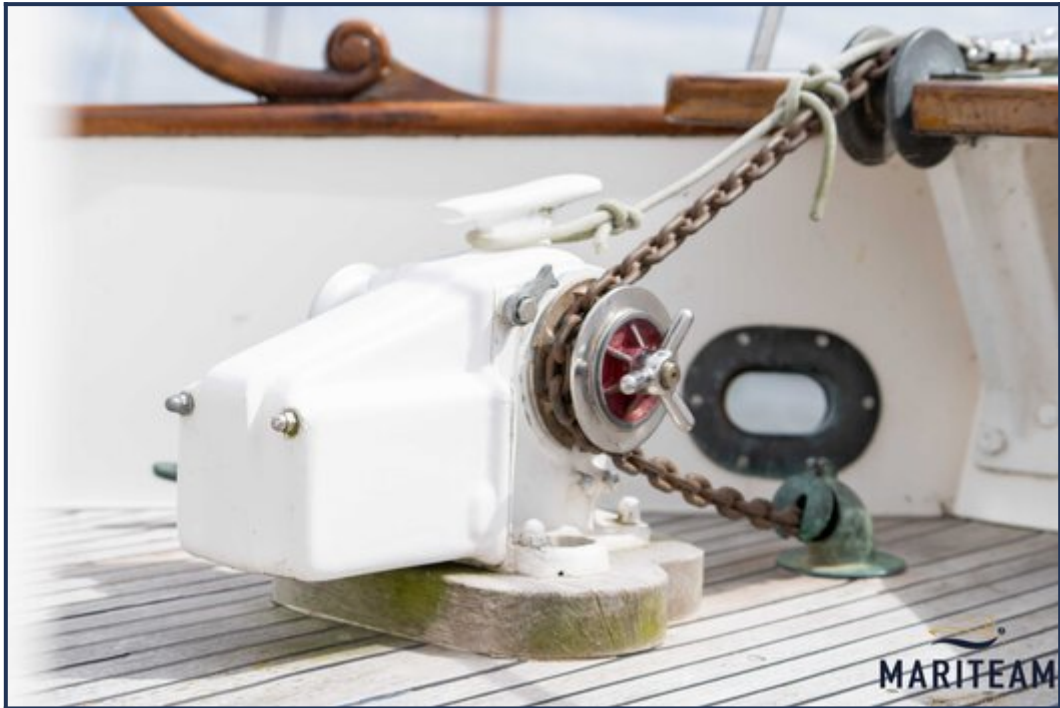




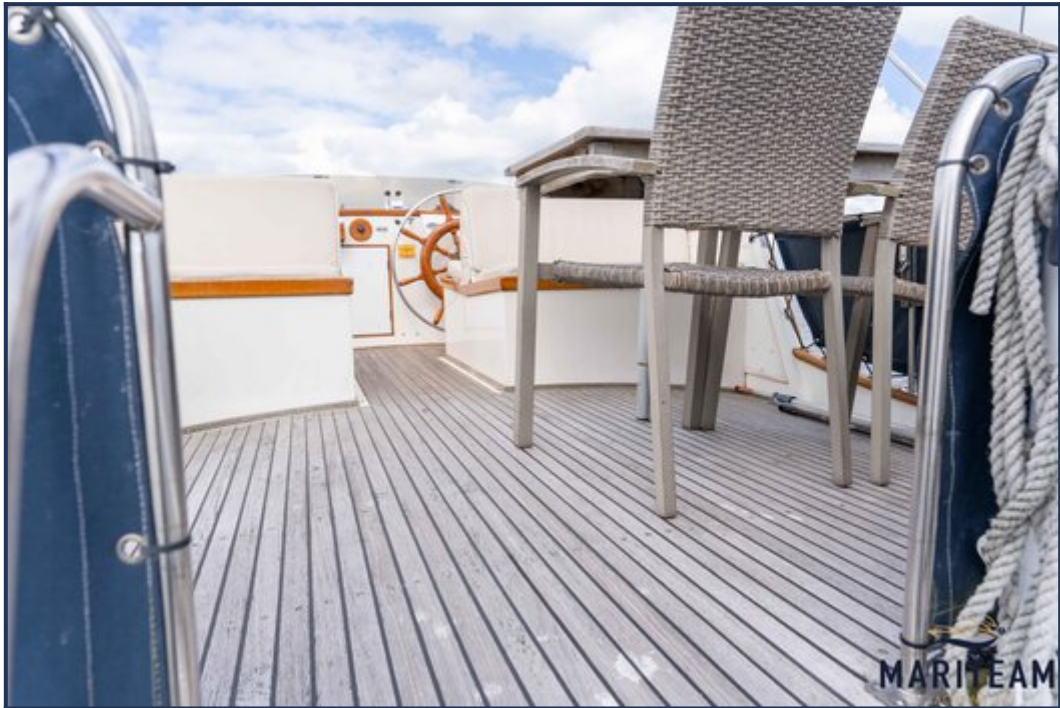
















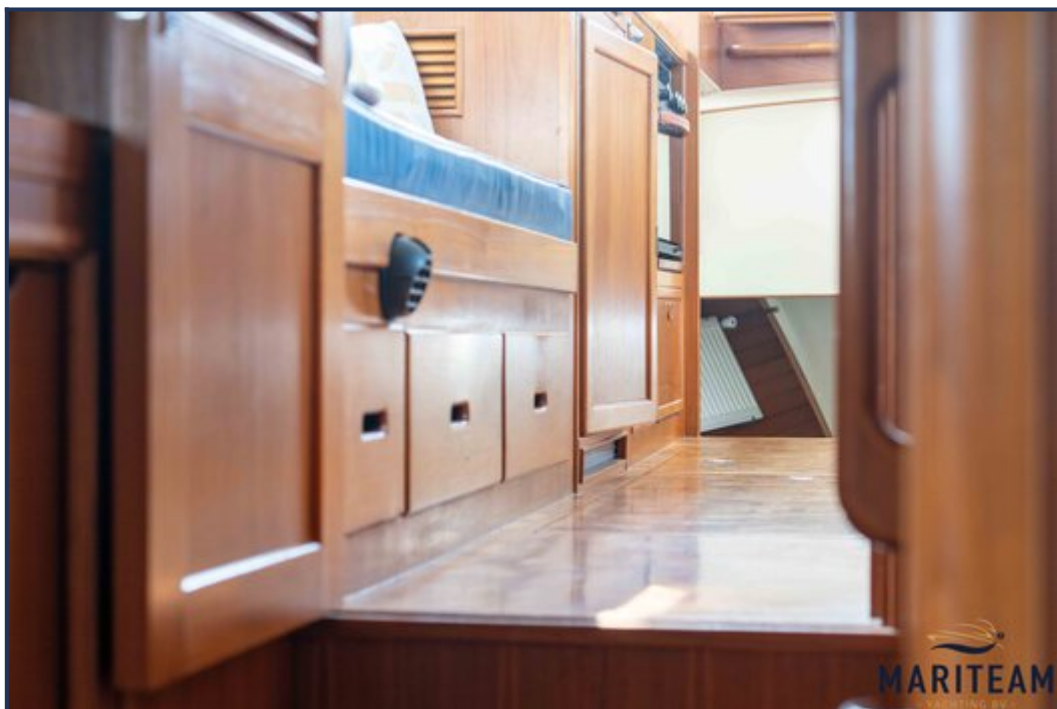
















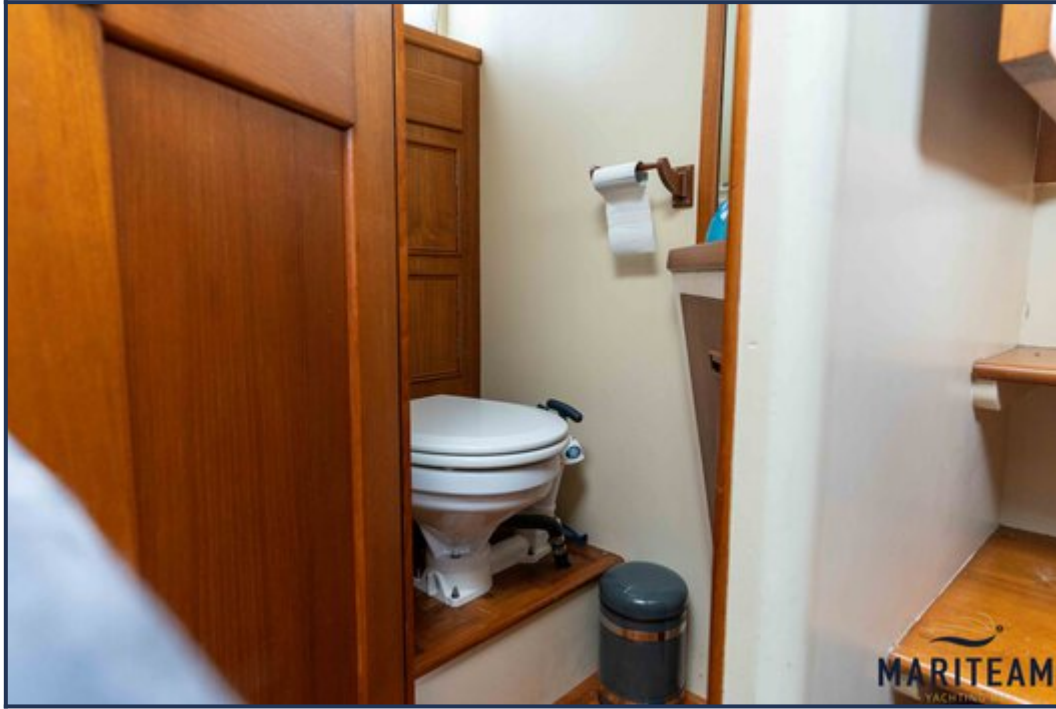


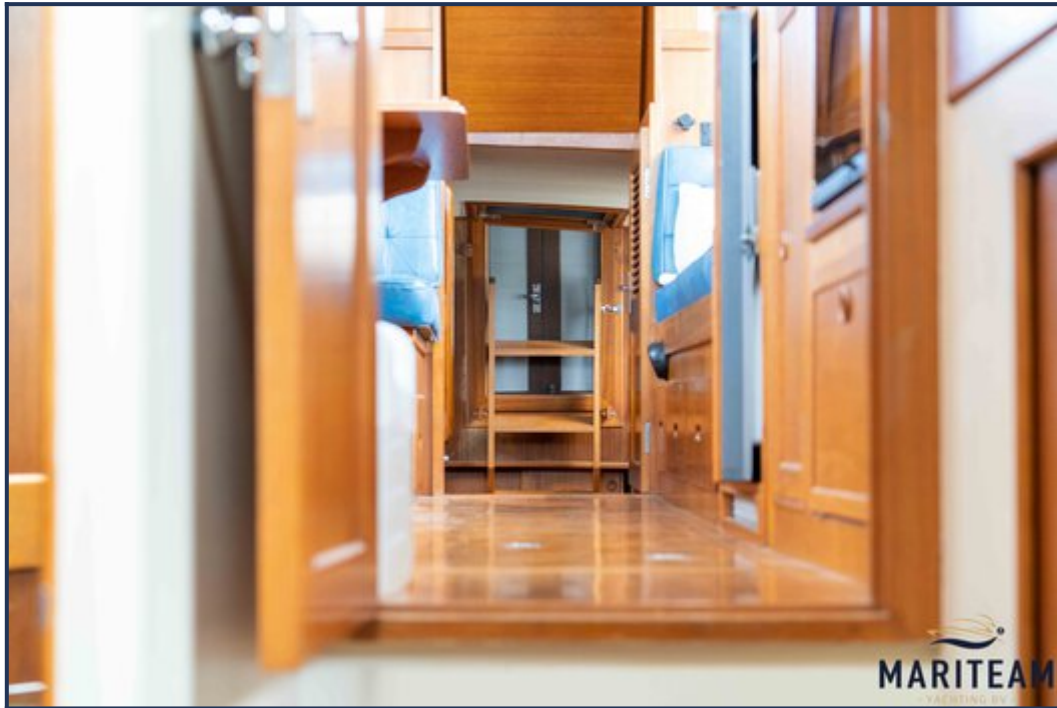


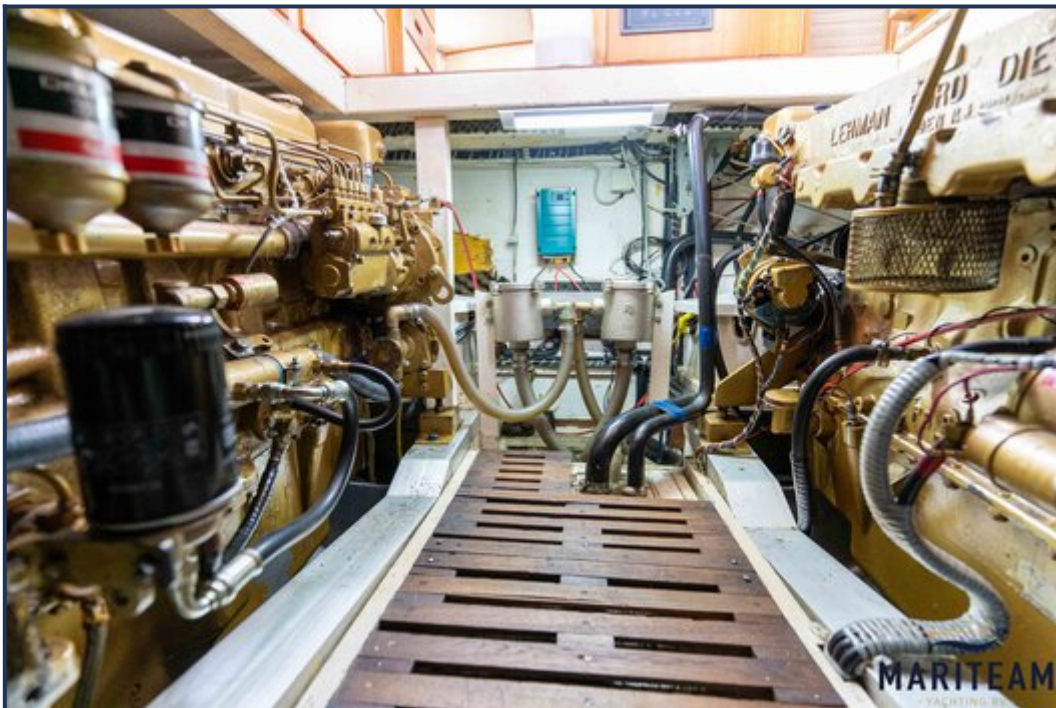
















These particulars are given in good faith as supplied but cannot be guaranteed and cannot be used for contracts.