



Grand Banks 36 Europa 'Houdoe'

LOA (m):	11.28 m
Beam (m):	3.86 m
Draft (m):	1.22 m
Engines:	2 xx 135hp Ford Lehman
Cabins:	2
Homeport:	Service office, Heeg
Price:	€ (not set)

The 36 Europe is one of grand banks' most sought-after models. The displacement hull is the same as the 36 Classic, but the flybridge of the Europa extends over the aft deck, creating a wonderful place to sit.

Houdoe has the standard two huts layout with a Galley-up containing an electric hob, combi microwave and a refrigerator. The salon has an L-shaped sofa with two chairs opposite. In front of the ship are the two sleeping cabins with one bathroom with electric toilet and a shower cabin.

Motorically, Houdoe has two Ford Lehman 135 hp engines and a bow thruster. Last year the ship was

equipped with a new radar.

The Houdoe has made long journeys through Europe which has left the necessary user traces. She is therefore looking for a new owner who is willing to carry out the necessary upgrade work before she starts her new travel adventures.

Main specifications

Model:	36 Europa
LOA (m):	11.28 m
Beam (m):	3.86 m
Draft (m):	1.22 m
Year:	1990
Hull Material:	GRP
Cabins:	2
Sleeping places:	3
Number of main engine(s):	2 x
Power of main engine(s) (hp):	135
Brand of main engine(s):	Ford Lehman
Price:	€ (not set)
VAT status:	EU Payed

General

Air draft (m):	6.65
Displacement (t):	13
Hull material:	GRP
Deck material:	GRP
Superstructure material:	GRP
Deck finish:	Teak
Fuel tank (Litre and material):	2 x 750L, Stainless steel
Freshwater Tank (Liter and material):	750L, Stainless steel
Antifouling (Year):	2021
Maximum speed (Kn):	-
Cruising speed (Kn):	7

Accommodation

Stove:	Princess, Electric
Microwave:	1 x combi, Delonghi
Refrigerator:	1 x Grunert
Single berths:	2 x
Double bed:	1 x
Toilets:	1 x electric
Showers:	1 x

Machinery

Port engine (Brand, type, hp, gearbox):	Ford Lehman, 135 hp
Engine hours port engine:	+/- 6000
Star engine (Brand, type, hp, gearbox):	Ford Lehman, 135 hp
Engine hours starboard engine:	+/- 6000
Prop (Number of blades, material):	2 x 3 blade
Generator (Brand, type, Kw):	Anon 6,5Kw
Generator hours:	655
Bowthruster (Brand, type, elec/hyd):	Rheinstrom
Hot water system:	Boiler
Heating system (brand, model, type):	aberspächer
Steering system:	Hydraulic

Electrical system

House battery (Number of battery,type, total Amp, year):	2 x (2018)
Start battery (Number of battery,type, total Amp, year):	2 x (2019)
Bowthruster battery (Number of battery,type, total Amp, year):	1 x (2002)
DC system (V) AC system (V):	12 V / 220V
Inverter (V/W/Amp):	Victron Multiplus 12V/1600W/70Amp
Battery charger (V/W/Amp):	Victron Multiplus 12V/1600W/70Amp

Safety system

Fire extinguisher engine room:	Powder
--------------------------------	--------

Navigation system

Radar :	Furuno (2021)
Wind meter :	Vetus
VHF:	Sailor
Autopilot:	Raymarine
Rudder indicator:	VDO

Equipment

Anchor:	1 x Bruce
Windlass:	Lofrans Tigres
Gangway:	1 x removable

Deck shower:	1 x
Horn:	1 x





























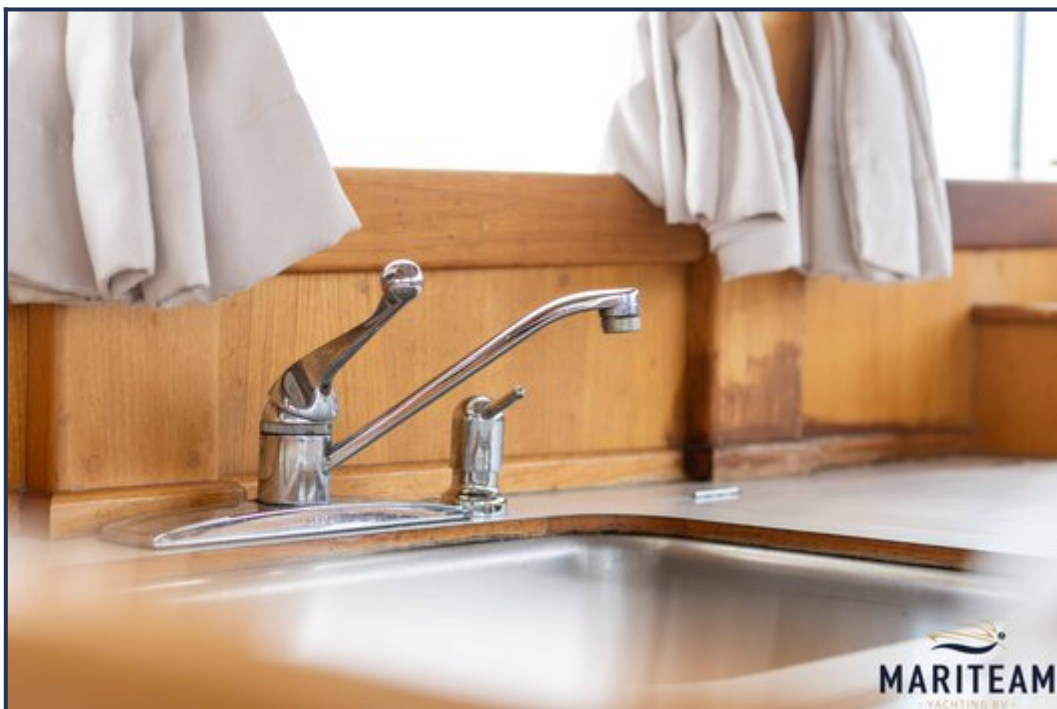
















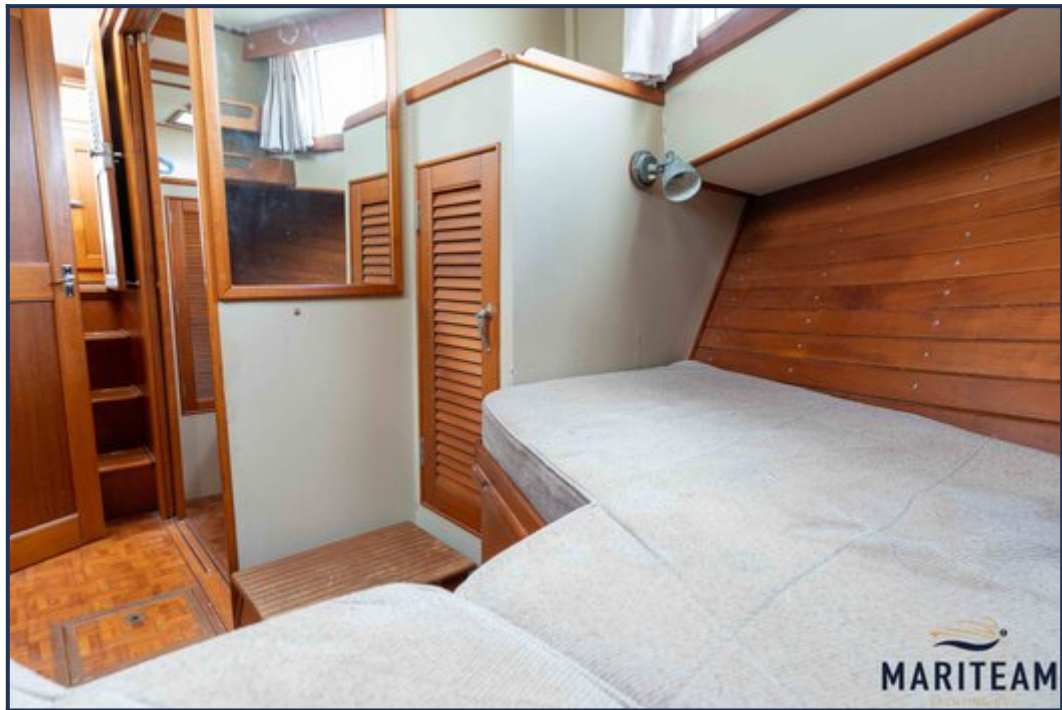


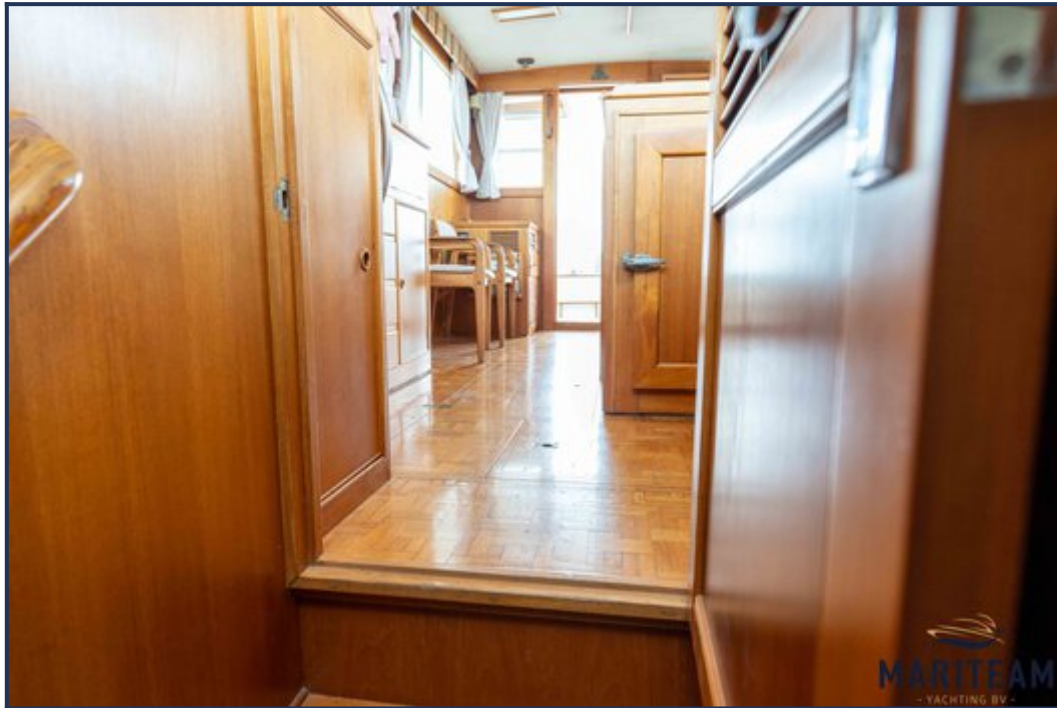


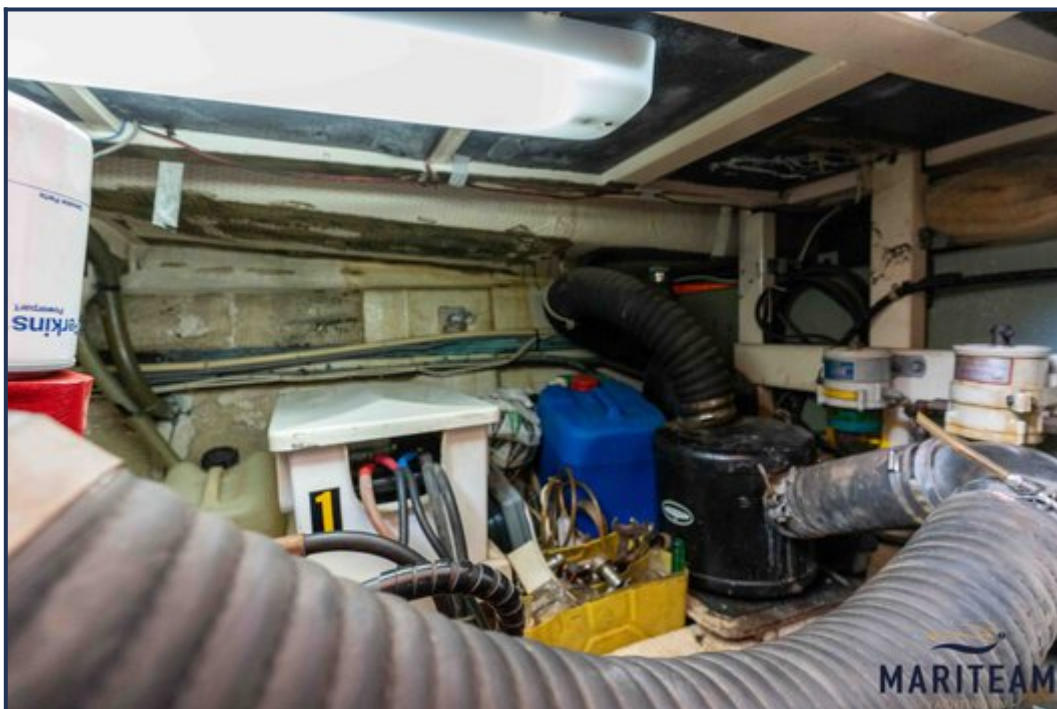
















These particulars are given in good faith as supplied but cannot be guaranteed and cannot be used for contracts.