



Grand Banks 42 Motoryacht 'White T'

LOA (m):	13.17 m
Beam (m):	4.29 m
Draft (m):	1.27 m
Year built:	1997
Engines:	2x 210hp Caterpillar
Cabins:	3
Homeport:	Service office, Heeg
Price:	€ (not set)

The Grand Banks 42 Motor yacht is designed for those people who prefer longer trips. This Grand Banks 42 Motoryacht is one of the more spacious designs of Grand Banks and offers a 3 cabin layout.

The well-known displacement hull, offers the best of both worlds, boasting economical and comfortable sailing at around 9 knots.

Sailing with several guests is possible due to the different cabins that are located in the front and back of the ship. At the time of design, two layouts were available to the shipyard. The first being a two huts layout, with a Galley-down and the second being a three huts layout with a Gally-up.

The layout of the White T uses the Gally-up approach, with two cabins in the front and a large owner's cabin in the back of the boat. For added comfort on the colder days, central heating can be found in various locations throughout the ship.

The Grand Banks is powered by 2x 210hp Caterpillar engines, with which the ship can achieve a maximum speed of 13 knots.

White T, a ship that can be enjoyed comfortably all year round.

Main specifications

Model:	Motoryacht 42
LOA (m):	13.17 m
Beam (m):	4.29 m
Draft (m):	1.27 m
Year:	1997
Hull Material:	Polyester
Cabins:	3
Sleeping places:	4
Number of main engine(s):	2
Power of main engine(s) (hp):	210
Brand of main engine(s):	Caterpillar
Price:	€ (not set)
VAT status:	VAT paid
HIN number:	GNDD1364G797

General

Name :	White T
Length waterline (m):	12.53
Air draft (m):	7.9
Year built:	1997
Displacement (t):	20
Deck material:	Polyester
Superstructure material:	Polyester
Deck finish:	Teak
Fuel tank (Litre and material):	2 x 1100L
Freshwater Tank (Liter and material):	1100L

Black water tank (Litre and material):	85L, staal
Antifouling (Year):	2022
Maximum speed (Kn):	13
Cruising speed (Kn):	9

Accommodation

Stove:	Princess
Oven:	Princess
Refrigerator:	Coolmatic Mdc 110
Interior finish:	Teak
Washing machine/Dryer:	Siemens Wash & Dry 6143
Single berths:	2
Double bed:	2
Cabins:	3
Toilets:	2
Showers:	2

Machinery

Port engine (Brand, type, hp, gearbox):	Caterpillar 3208, 210 pk
Drive (Shaft, IPS, Jet):	Drive shaft
Prop (Number of blades, material):	4
Star engine (Brand, type, hp, gearbox):	Caterpillar 3208, 210 pk
Generator (Brand, type, Kw):	Onan 6.5 MDKD-P
Bowthruster (Brand, type, elec/hyd):	Rheinstrom Koblenz
Electrical bilge pump:	2

Manual bilge pump:	1
Hot water system:	Maritime booster
Heating system (brand, model, type):	Maritime booster
Steering system:	Hydraulic
Deckwash:	1
Engine hours engine 1:	2500
Engine hours engine 2:	2500

Electrical system

House battery (Number of battery,type, total Amp, year):	4, 230 Ah, 2019
Start battery (Number of battery,type, total Amp, year):	2 x Optima Red Top (2022)
Inverter (V/W/Amp):	Victron Quarto 5000W
Battery charger (V/W/Amp):	Victron

Safety system

Radar reflector:	provided
Life raft:	2018

Navigation system

Gps plotter:	Raymarine Axiom 9 + repeater (2020)
Log:	Autohelm ST 50
Wind meter :	Logic
Rudder indicator:	Raymarine

Equipment

Anchor:	20kg Winchmatic with remote control
Windlass:	Lofrans Tigre
Deck shower:	1
Search light:	provided
Horn:	provided, 2019





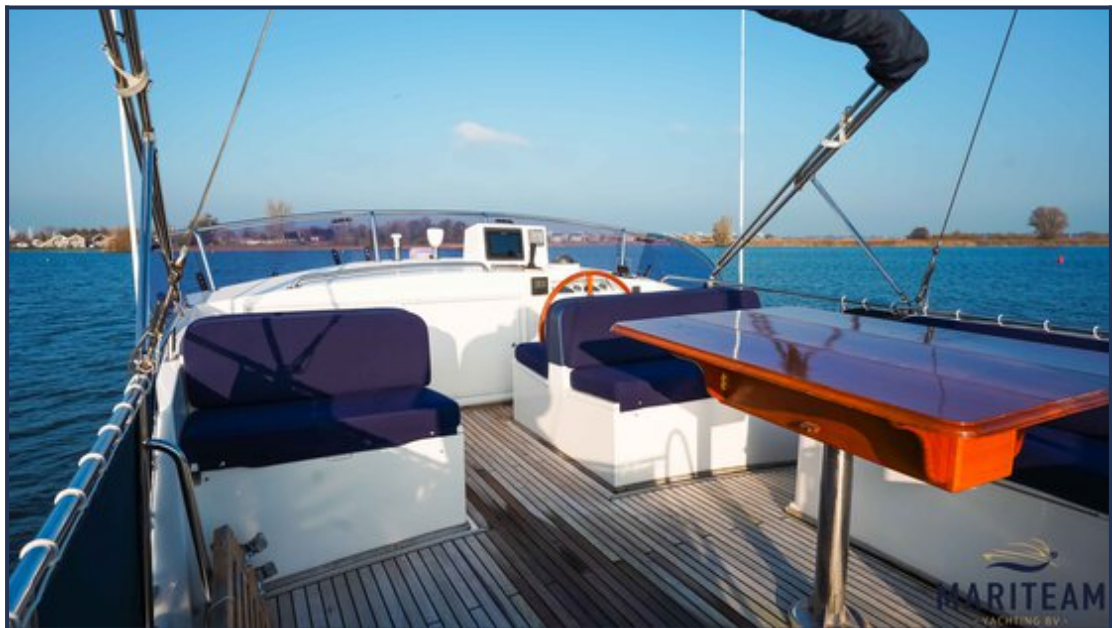










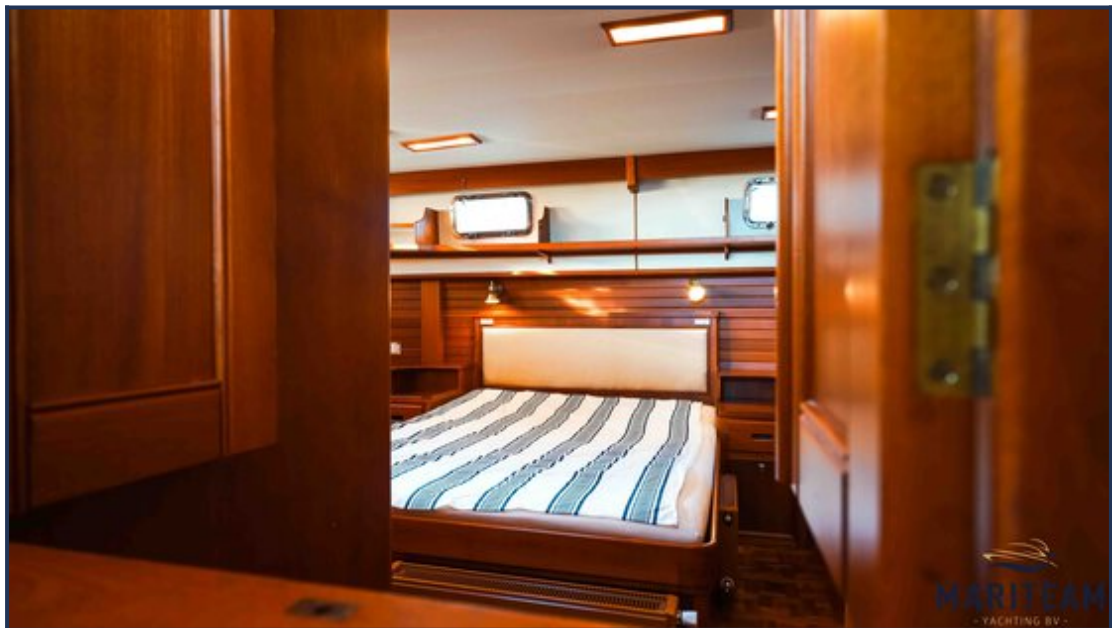
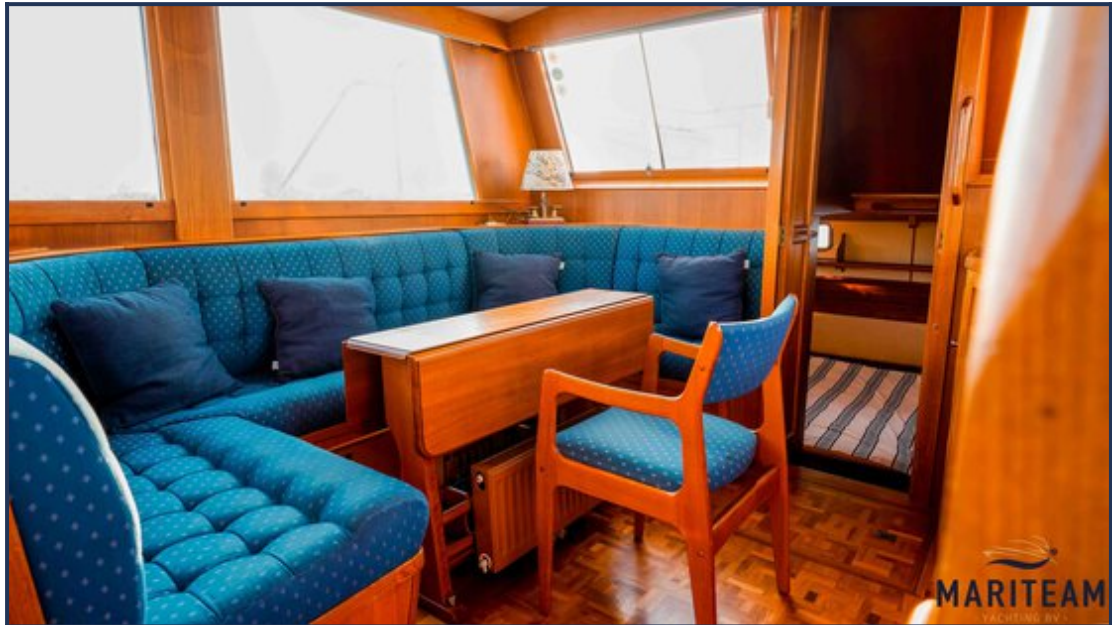




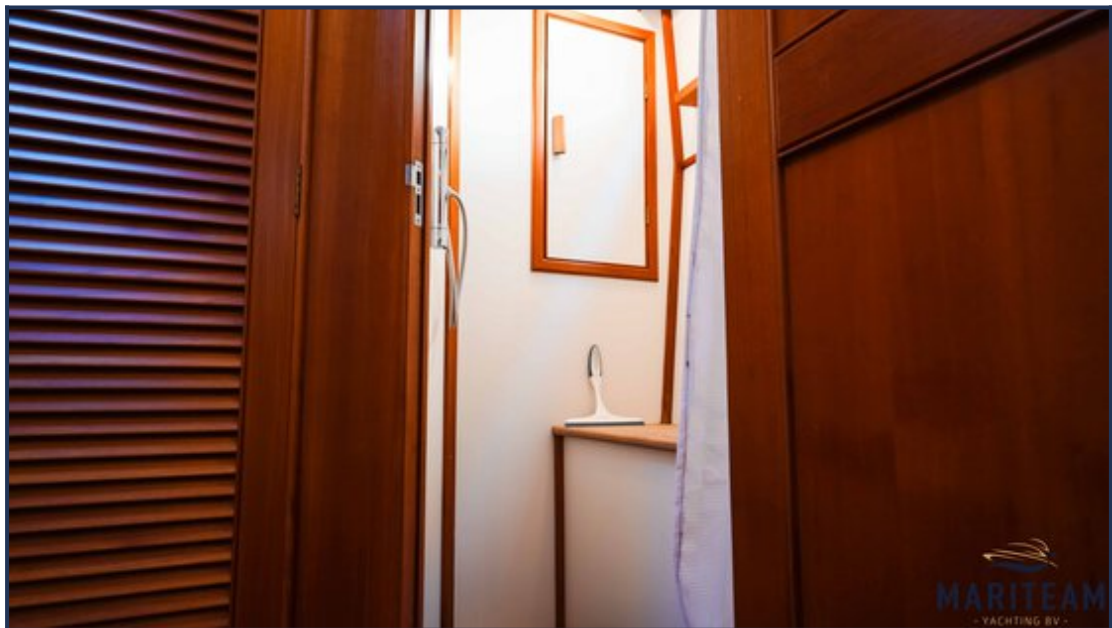








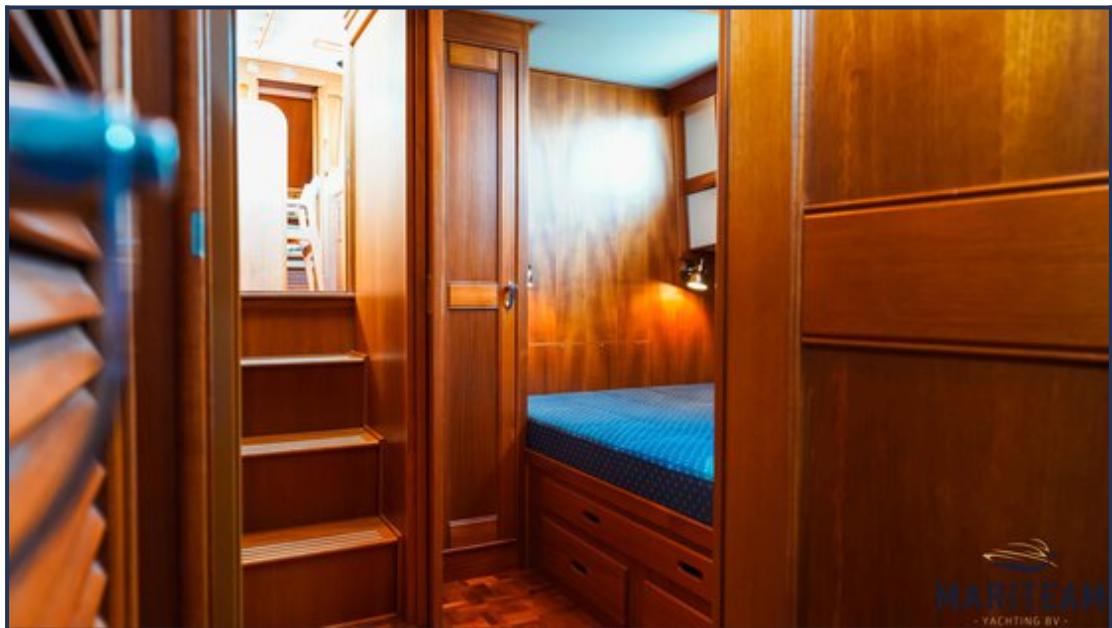
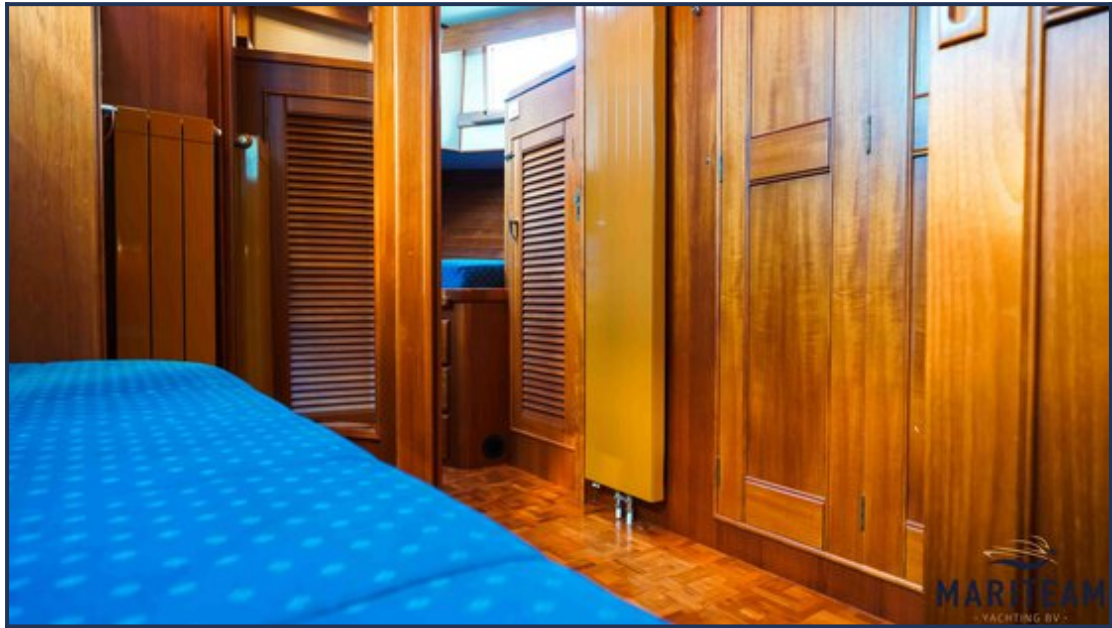


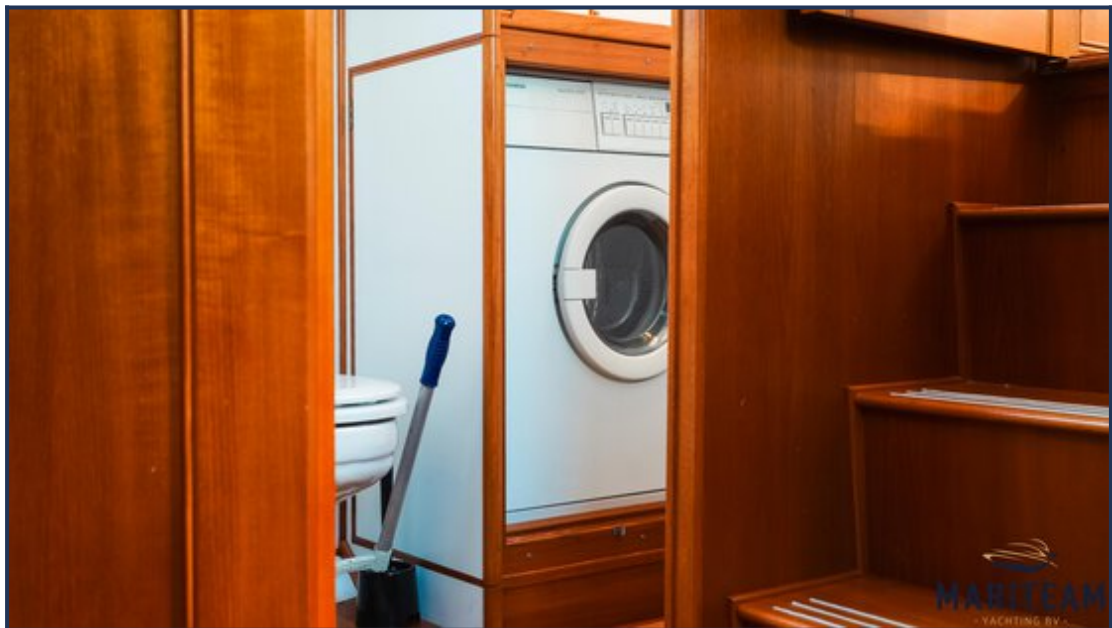
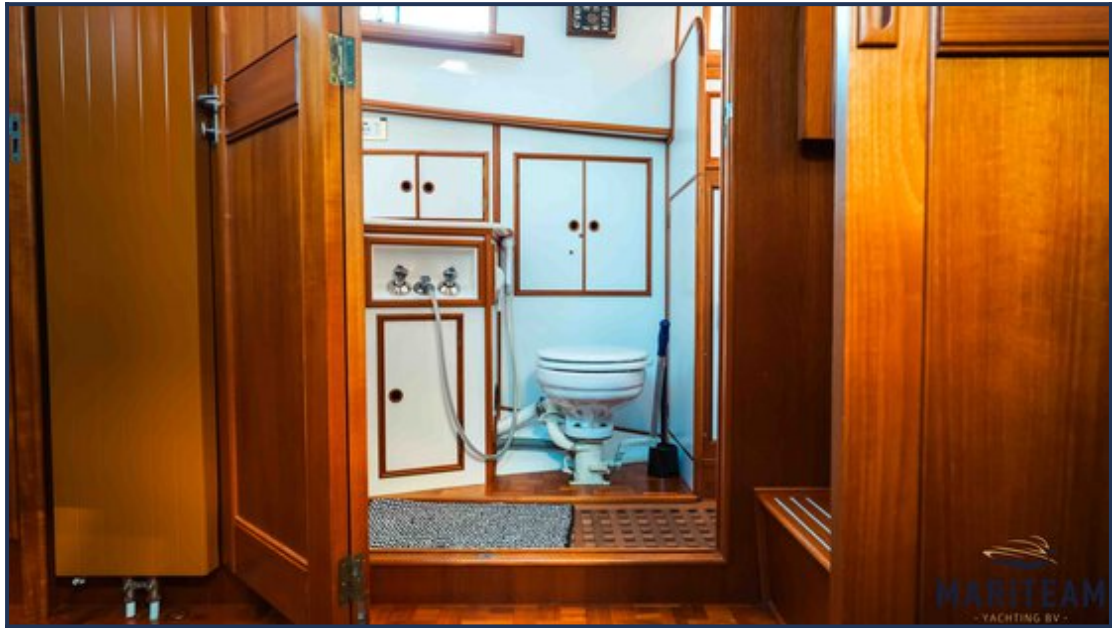


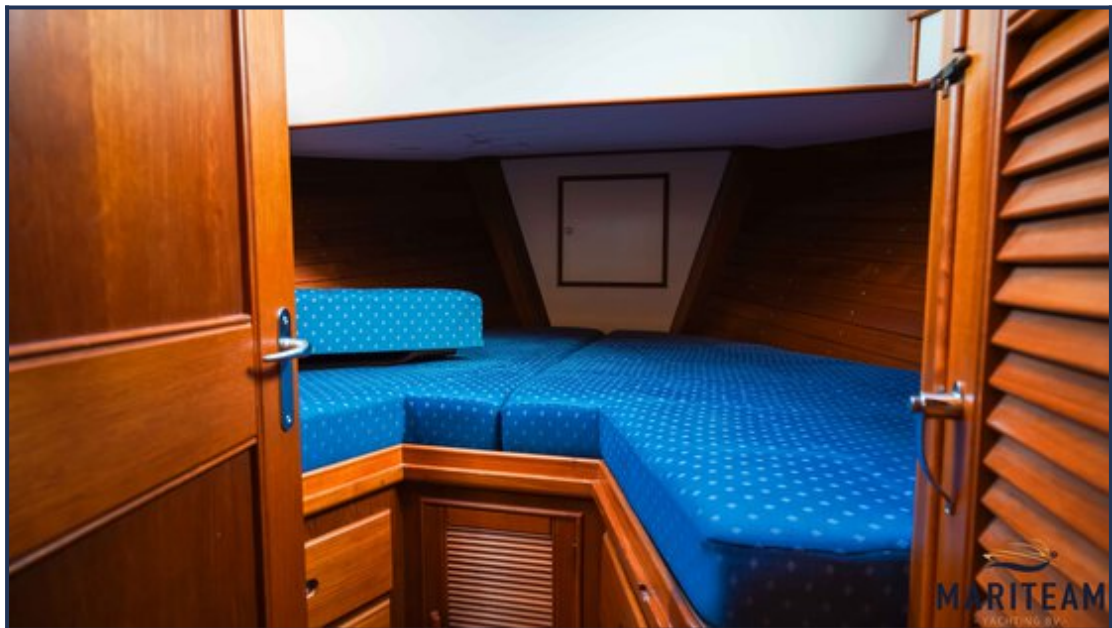
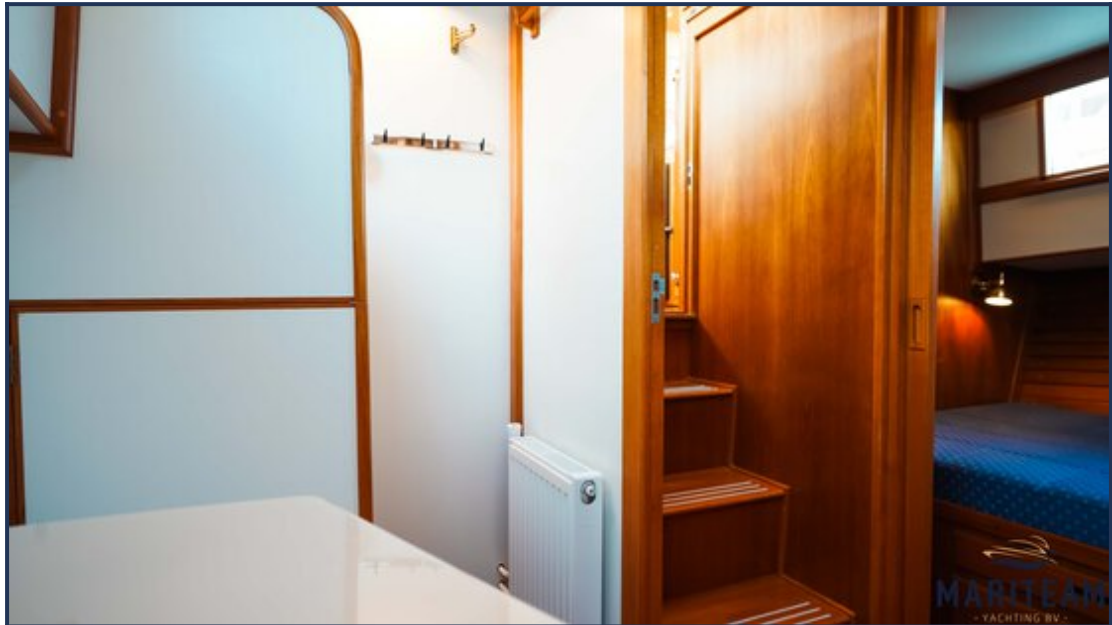




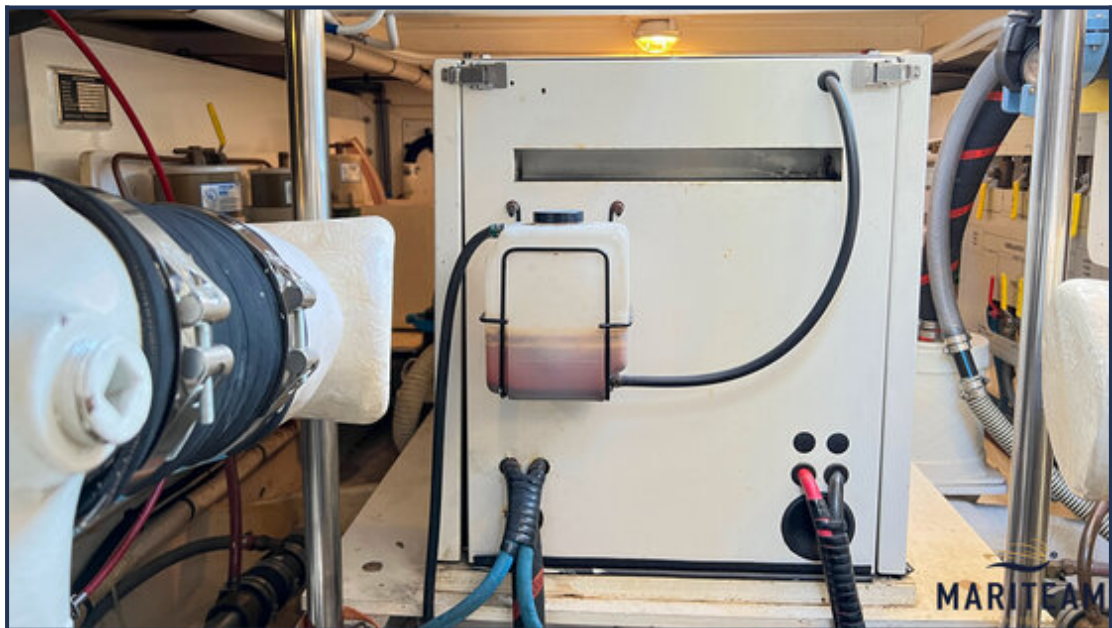


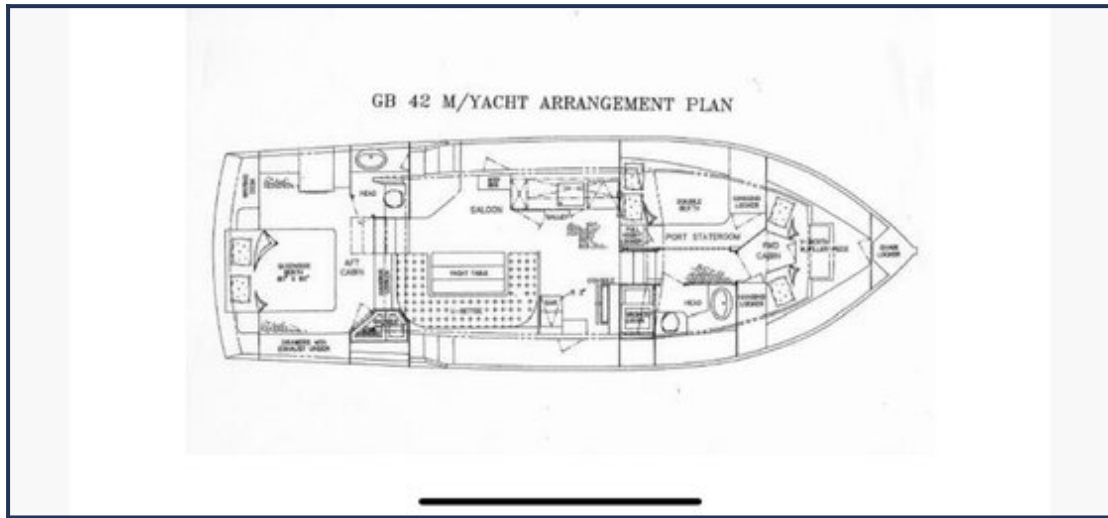












These particulars are given in good faith as supplied but cannot be guaranteed and cannot be used for contracts.