



MARITEAM

- YACHTING -



Grand Banks 46 Classic 'Rupert the Bear'

LOA (m): 14.35 m

Beam (m): 4.50 m

Draft (m): 1.33 m

Year built: 1992

Engines: 2x 375hp Caterpillar

Cabins: 3

Homeport: Service office, Heeg

Price: € (not set)

The Grand Banks 46 Classic was introduced in 1985 and seen by many Grand Banks enthusiasts as one of the best cruisers of the time. Over the years, various interior versions were offered. Rupert the Bear has the popular 3 huts layout with Galley-up and central heating for the colder days.

Motorically, the ship is equipped with two times 375 hp strong Caterpillar engines and a hydraulic bow thruster. The ship also has a new Simrad navigation system. Both inside and on top of the flybridge.

Rupert the Bear, a wonderfully spacious ship and fully equipped.

MARITEAM YACHTING

Ceresweg 20-B, 8938 BG Leeuwarden 📍 The Netherlands 📞 Phone +31 (0) 582 889254

info@mariteamyachting.nl 📧 www.mariteamyachting.nl



MARITEAM

- YACHTING -

MARITEAM YACHTING

Ceresweg 20-B, 8938 BG Leeuwarden 📍 The Netherlands 📞 Phone +31 (0) 582 889254
info@mariteamyachting.nl 📧 www.mariteamyachting.nl

Main specifications

Model:	46 Classic
LOA (m):	14.35 m
Beam (m):	4.50 m
Draft (m):	1.33 m
Year:	1992
Hull Material:	Polyester
Cabins:	3
Sleeping places:	5
Number of main engine(s):	2
Power of main engine(s) (hp):	375
Brand of main engine(s):	Caterpillar
Price:	€ (not set)
VAT status:	EU payed
HIN number:	GNDF0130H293

General

Air draft (m):	4.44 (top of windshield)
Year built:	1992
Displacement (t):	18
Hull material:	Polyester
Deck material:	Polyester
Superstructure material:	Polyester
Deck finish:	Teak
Window material:	Double glass
Fuel tank (Litre and material):	2271L
Freshwater Tank (Liter and material):	1077L

Maximum speed (Kn):	18
Cruising speed (Kn):	14

Accommodation

Stove:	4 pits induction, De Dietrich
Microwave:	national
Oven:	Bosch
Refrigerator:	Coolmatic
Freezer:	1x in fridge
Washing machine/Dryer:	AEG Lavamet 2080 Turbo
Single berths:	3
Double bed:	1
Toilets:	2, vacuflush
Showers:	2

Machinery

Port engine (Brand, type, hp, gearbox):	Caterpillar 3208 TA 375 PK
Main engines control (Brand and type):	Morse
Drive (Shaft, IPS, Jet):	Drive shaft
Shaft lubrication:	Water lubricated
Prop (Number of blades, material):	4
Star engine (Brand, type, hp, gearbox):	Caterpillar 3208 TA 375 PK
Generator (Brand, type, Kw):	Onan 6.5Kw
Bowthruster (Brand, type, elec/hyd):	HPS, Hydraulic
Electrical bilge pump:	2

Manual bilge pump:	1
Water pressure pump (Brand, model):	Paragon Senior
Hot water system:	Seaward
Heating system (brand, model, type):	Kabola cv
Trim system:	Trim tab
Steering system:	Hydraulic
Engine hours engine 1:	1900
Engine hours engine 2:	1900
Generator hours:	15

Electrical system

DC system (V) AC system (V):	12 V / 220V
Battery charger (V/W/Amp):	Sentry 12V

Safety system

Fire extinguisher engine room:	Flexon
--------------------------------	--------

Navigation system

Compass:	Danford
Gps plotter:	Simrad NSS 12 EVO 3
Radar screen:	Simrad NSS 12 EVO 3
Radar :	Simrad
Depth meter:	Simrad NSS 12 EVO 3
Log:	Simrad NSS 12 EVO 3

Wind meter :	Raymarine ST60
VHF:	Simrad RS35
AIS:	EM-TRAC
Autopilot:	Simrad FU 80
Rudder indicator:	Ja

Equipment

Anchor:	1x
Windlass:	Lofran Tigres
Deck shower:	1
Horn:	Compressor





































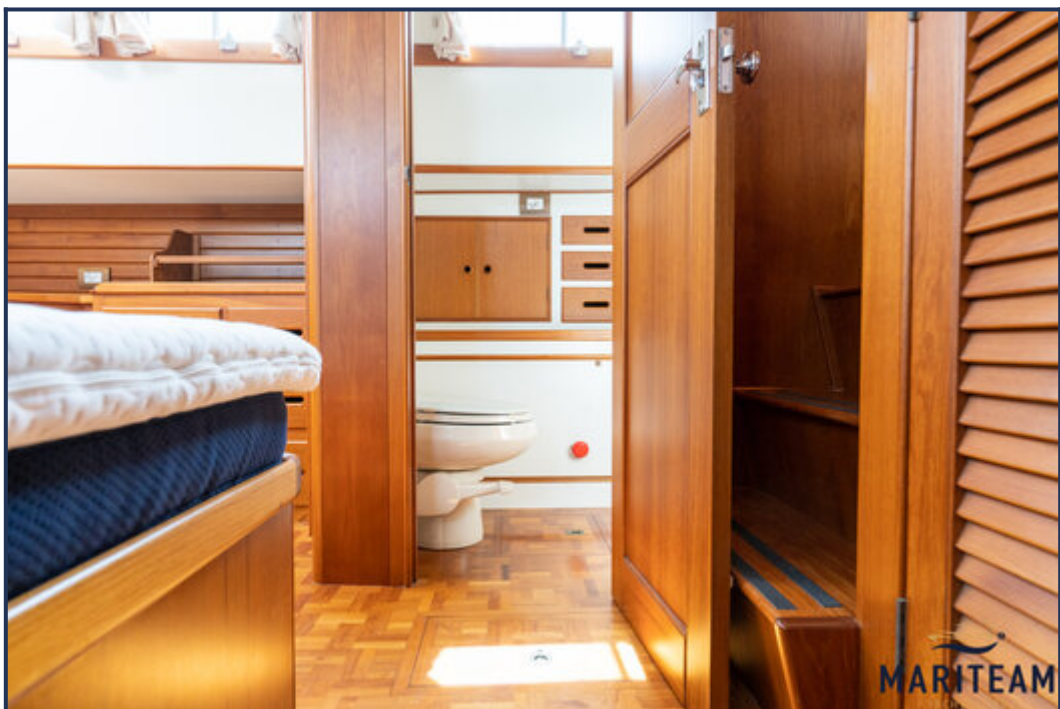


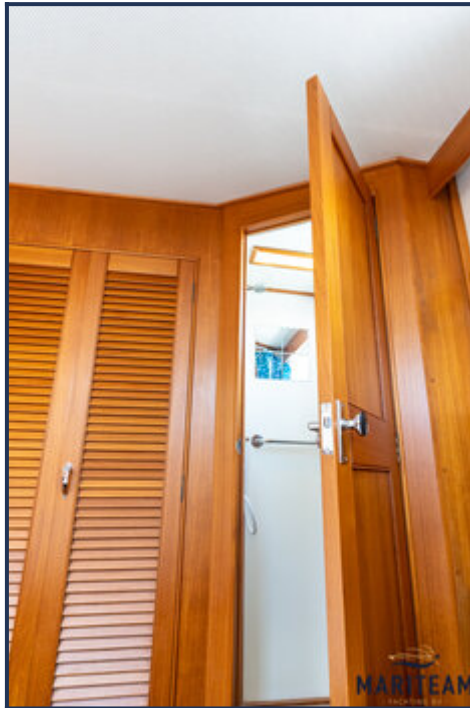


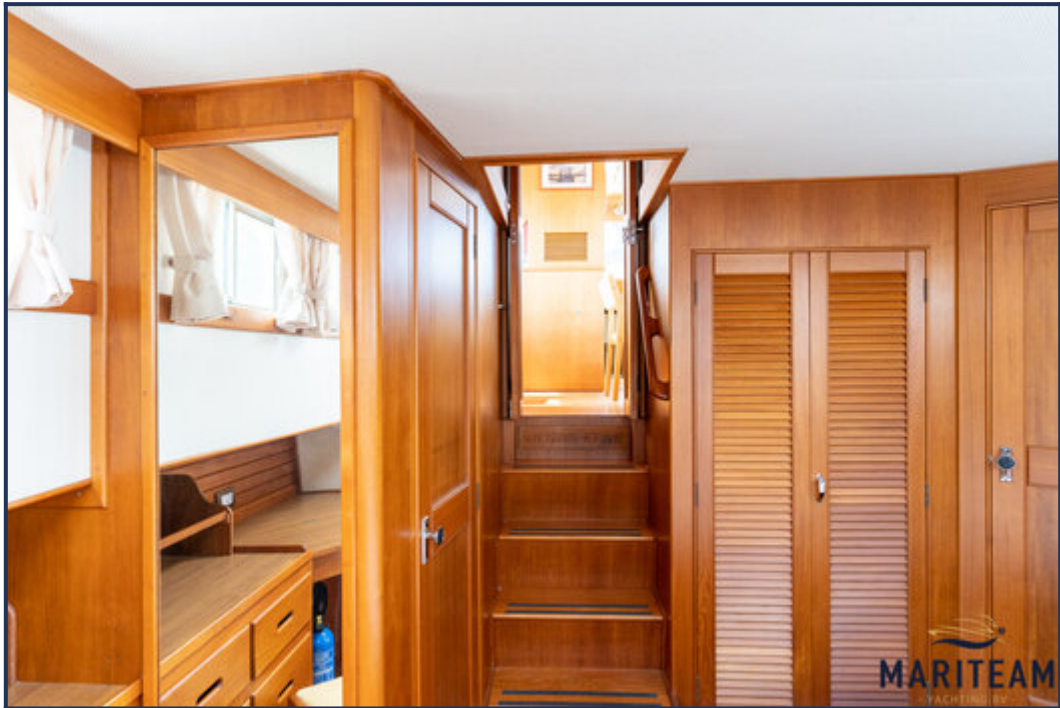






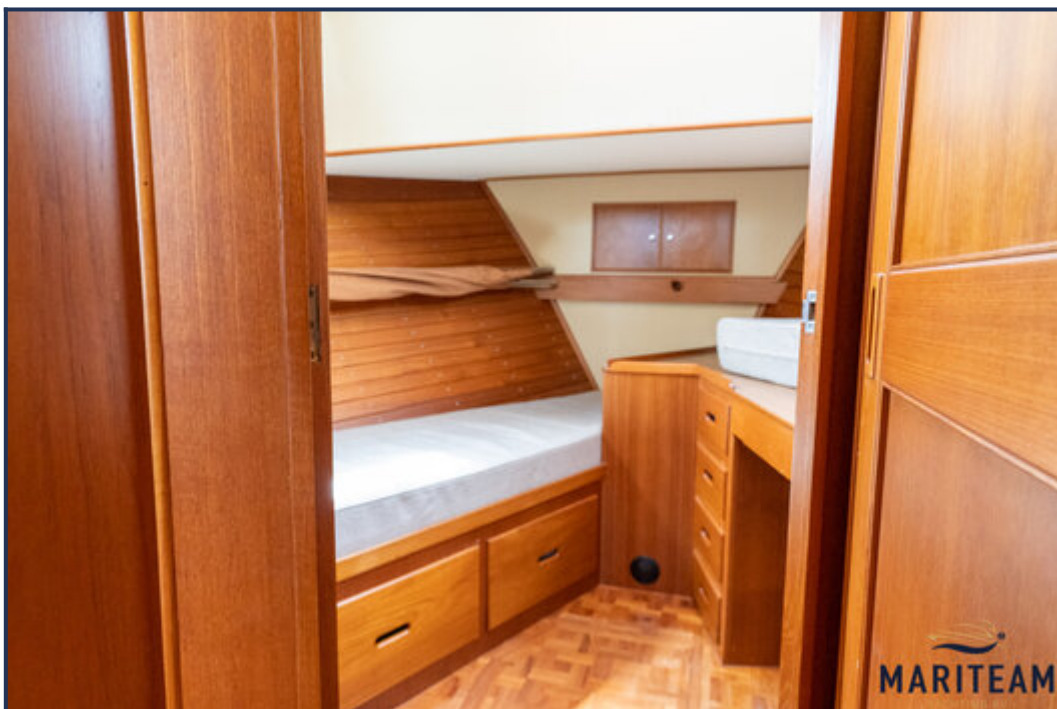
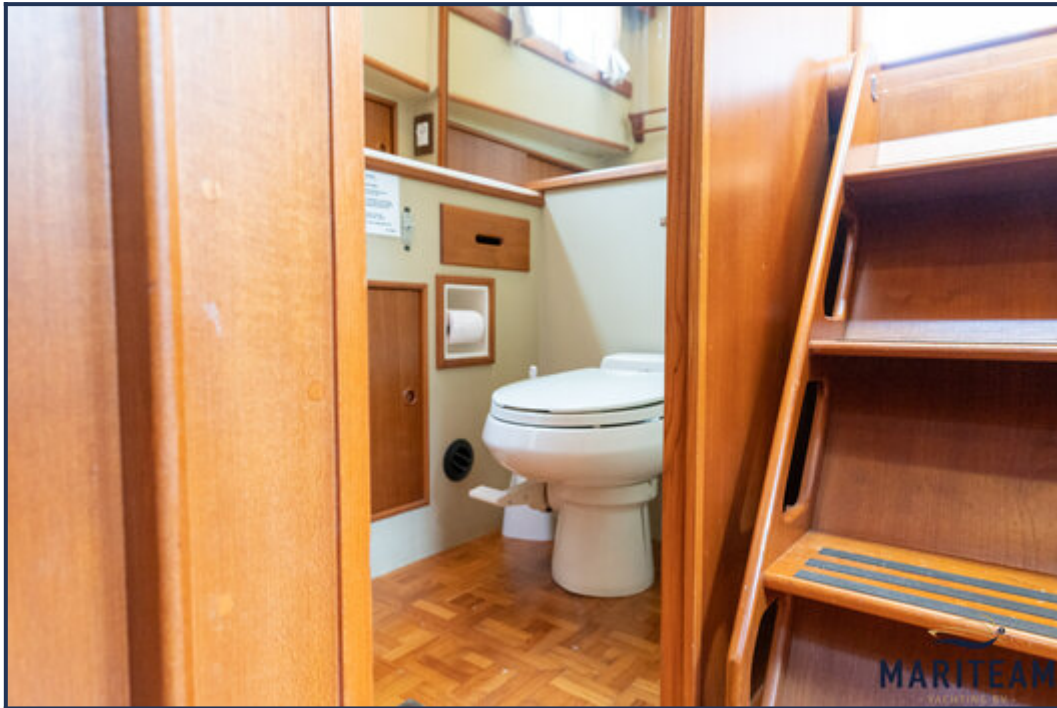






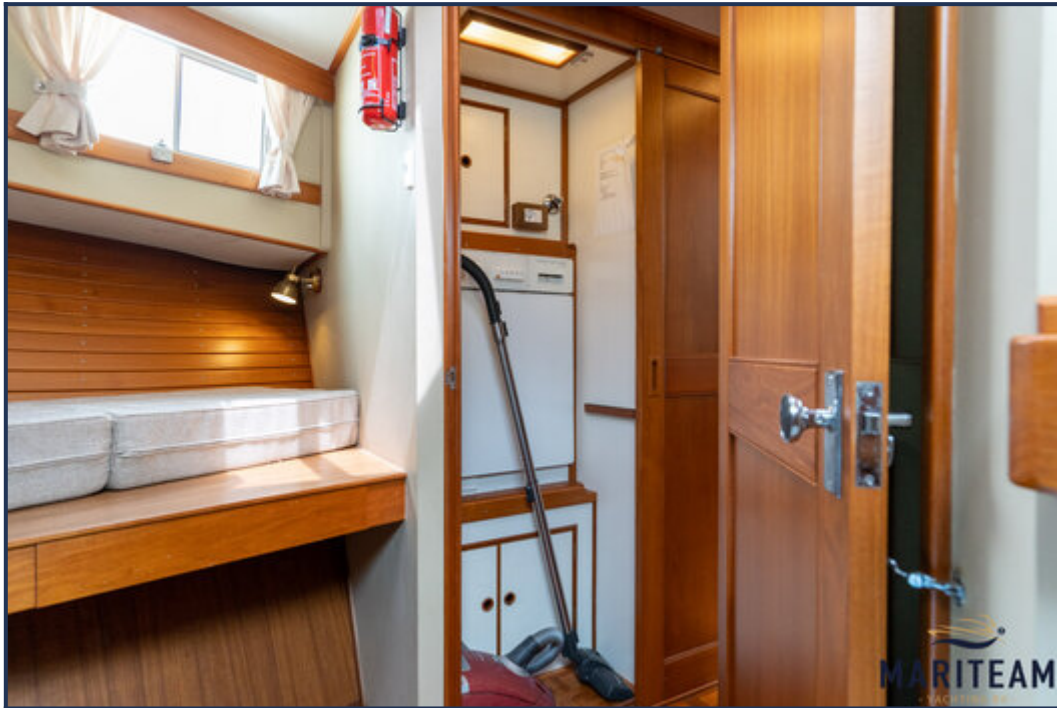


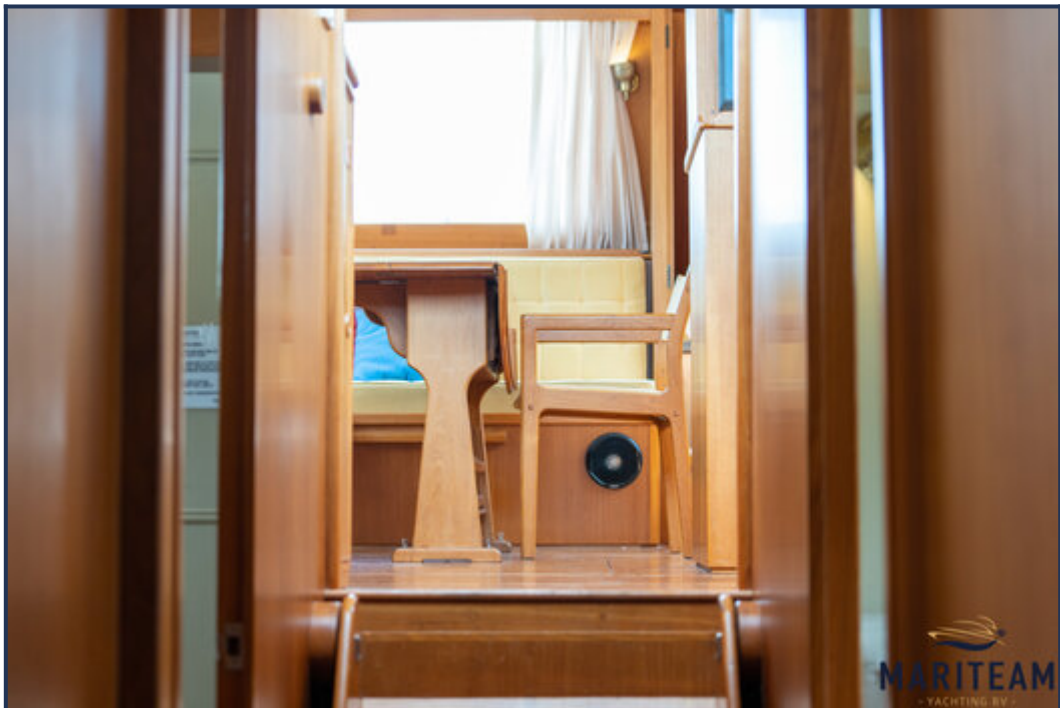
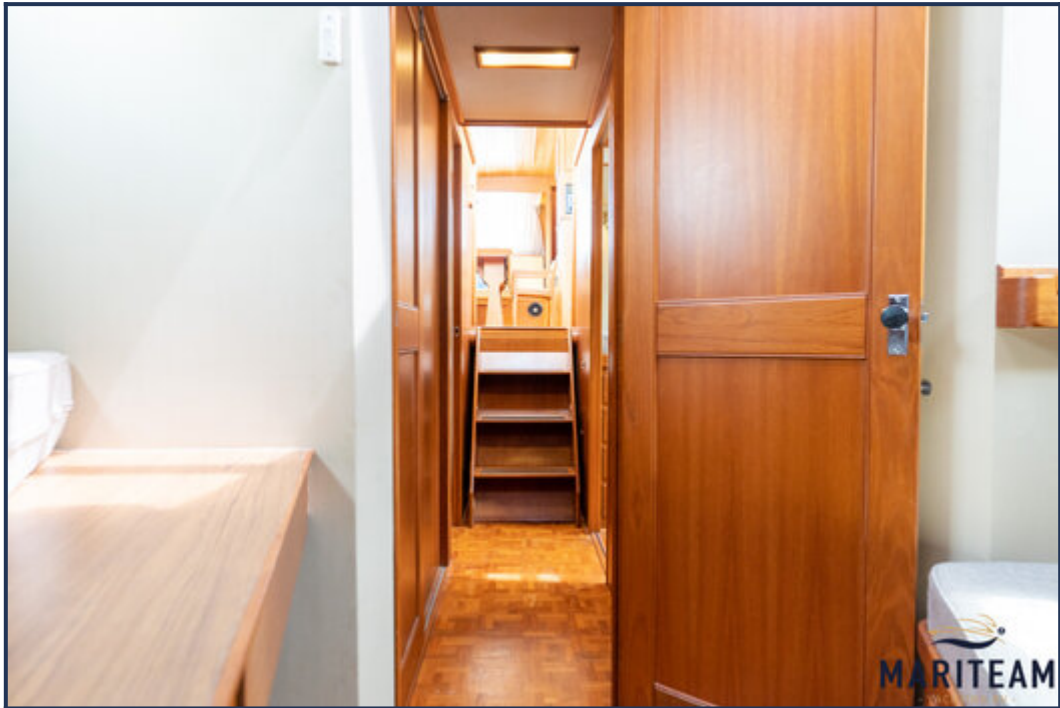










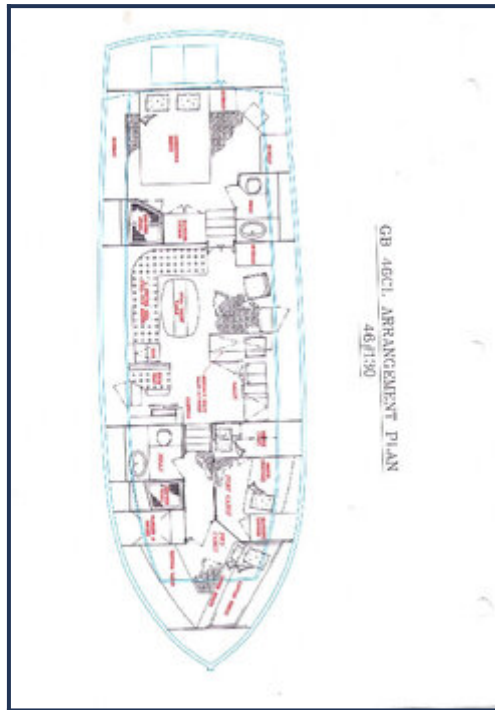












These particulars are given in good faith as supplied but cannot be guaranteed and cannot be used for contracts.