



MARITEAM

- YACHTING -



Grand Banks 42 Europa 'Chapter'

| | |
|------------|------------------|
| LOA (m): | 13.18 m |
| Beam (m): | 4.27 m |
| Draft (m): | 1.29 m |
| Engines: | 2x 330hp Cummins |
| Cabins: | 2 |
| Homeport: | Sales office |
| Price: | € 0 |

Unique, the latest GB 42 Europe delivered in Europe! hullnumber 1559 of the Grand Banks 1560 built in total 42.

Performed in the most desirable configuration and with only 860 sailing hours!

The cozy lounge with double sofa is equipped with climate control by the reversible air conditioning, like the other cabins, which makes it very pleasant. The kitchen is equipped with many storage areas and conveniences, including a dishwasher.

MARITEAM YACHTING

De Draei 29, 8621 CZ Heeg 📍 The Netherlands 📞 Phone +31 (0) 582 889254
info@mariteamyachting.nl 🌐 www.mariteamyachting.nl



MARITEAM

- YACHTING -

The two cabins are located in the front of the ship and each has its own Toilet, which makes the ship very suitable for taking guests.

In 2022, a large maintenance was carried out, making the ship ready to sail directly. All external teak has 13 new layers of paint and the entire ship is polished according to the seven-step system of Riwx. The outer dressing and the upholstery of the steering chairs on the flybridge are also new, making the ship look beautiful. Regular maintenance has also been carried out, including motor service, anodes, new antifouling, four new fire extinguishers and the life raft has been inspected.

In addition, the latest raymarine equipment has been installed: Raymarine radar with doppler function, three Raymarine aixiom radar/navigation screens, AIS and VHF and two Raymarine i70s multi-function displays and a dst810 depth gauge. This ensures that navigation is smooth in different weather conditions.

In short, the last GB 42 Europe delivered in Europe that is ready to sail right away!

*Price on request

MARITEAM YACHTING

De Draei 29, 8621 CZ Heeg 📍 The Netherlands 📞 Phone +31 (0) 582 889254
info@mariteamyachting.nl 🌐 www.mariteamyachting.nl

Main specifications

| | |
|-------------------------------|-------------|
| Model: | 42 Europa |
| LOA (m): | 13.18 m |
| Beam (m): | 4.27 m |
| Draft (m): | 1.29 m |
| Year: | 2005 |
| Hull Material: | Polyester |
| Cabins: | 2 |
| Sleeping places: | 4 |
| Number of main engine(s): | 2 |
| Power of main engine(s) (hp): | 330 |
| Brand of main engine(s): | Cummins |
| Price: | € 0 |
| VAT status: | EU Payed |
| HIN number: | GND1559F505 |

General

| | |
|---------------------------------------|--------------------------|
| Name : | Chapter |
| CE-category: | A |
| Cruising speed (Kn): | 8.6 |
| Maximum speed (Kn): | 18.6 |
| Air draft (m): | 4.34 (top of windshield) |
| Displacement (t): | 18 |
| Fuel tank (Litre and material): | 2270L, staal |
| Freshwater Tank (Liter and material): | 1050L, RVS |
| Superstructure material: | Polyester |
| Deck material: | Polyester |

| | |
|---------------------|--------|
| Deck finish: | Teak |
| Window material: | Single |
| Antifouling (Year): | 2022 |

Accommodation

| | |
|--|--------------------------------|
| Double bed: | 2 |
| Showers: | 1 |
| Toilets: | 2 |
| Heating system (brand, model, type): | Reverse cycle air conditioning |
| Airconditioning system (Brand, model): | Reversal airco in every cabin |
| Stove: | Gaggenau, 3 pits electrisch |
| Microwave: | Gaggenau |
| Refrigerator: | 2 x Coolmatic |
| Freezer: | freezer in fridge |
| Dish washer: | Bosch |
| Washing machine/Dryer: | Whirlpool |

Machinery

| | |
|---|-------------------------|
| Main engines control (Brand and type): | Panisch controls |
| Port engine (Brand, type, hp, gearbox): | Cummins 6BT5.9-M, 330pk |
| Engine hours port engine: | 860 |
| Star engine (Brand, type, hp, gearbox): | Cummins 6BT5.9-M, 330pk |
| Engine hours starboard engine: | 860 |
| Steering system: | Hydraulisch |
| Drive (Shaft, IPS, Jet): | Drive shaft |

| | |
|--------------------------------------|------------------|
| Shaft lubrication: | Water lubricated |
| Prop (Number of blades, material): | 4 |
| Generator (Brand, type, Kw): | Onan, 7Kw |
| Generator hours: | 1200 |
| Bowthruster (Brand, type, elec/hyd): | Sidepower |
| Trim system: | Bennet |

Electrical system

| | |
|------------------------------|------------|
| DC system (V) AC system (V): | 12V / 220V |
| Battery charger (V/W/Amp): | Protech |

Safety system

| | |
|--------------------------------|----------------|
| Life raft: | 2022 gekeurd |
| Electrical bilge pump: | 3 |
| Manual bilge pump: | 1 |
| Fire extinguisher engine room: | Fireboy |
| Fire alarm: | In every cabin |
| Horn: | kahlenberg |

Navigation system

| | |
|---------------|----------------------------|
| Compass: | Ritchie |
| Gps plotter: | Raymarine Axion 9T+ (2022) |
| Radar screen: | Raymarine Axion 9T (2022) |
| Radar : | Raymarine Doppler (2022) |

| | |
|-------------------|------------------------|
| Autopilot: | Raymarine Smart Pilot |
| Rudder indicator: | VDO |
| Log: | I70S (2022) |
| Depth meter: | DST 810 en I70S (2022) |
| VHF: | Raymarine Ray63 |
| AIS: | Raymarine |

Equipment

| | |
|---------------|------------------------------|
| Tender: | Zodiac (optioneel) |
| Tender crane: | Giek |
| Gangway: | Besenzoni + Bluetooth Remote |
| Anchor: | Bruce, 20 kg |
| Windlass: | Lofran Tigres |
| Deckwash: | Yes |
| Deck shower: | 1 |



































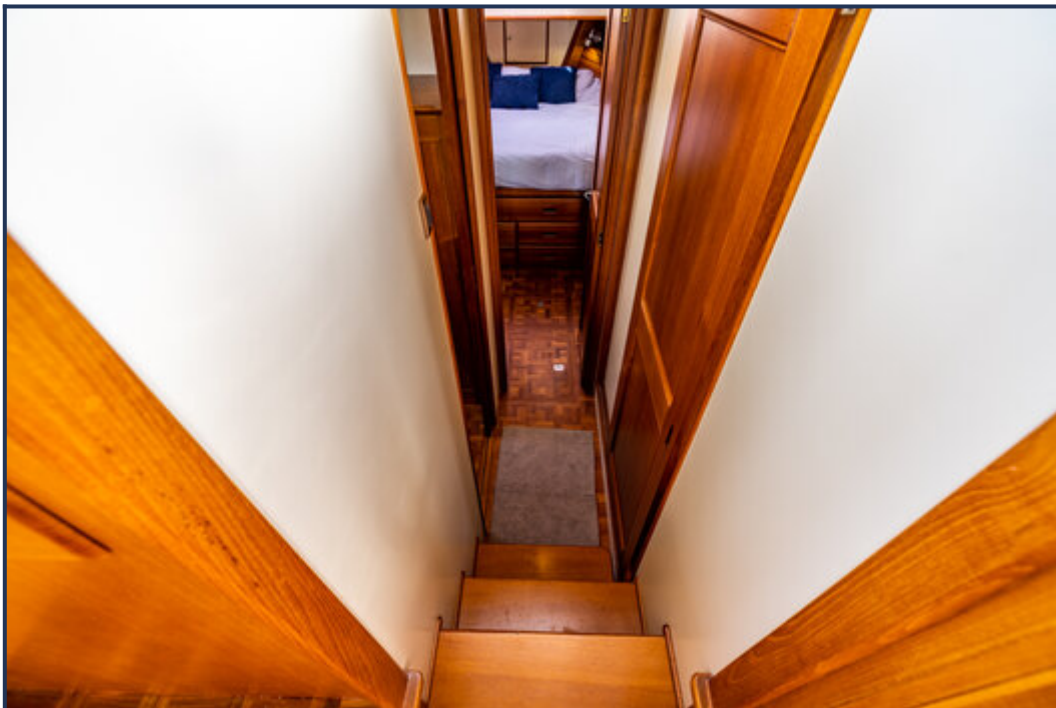


















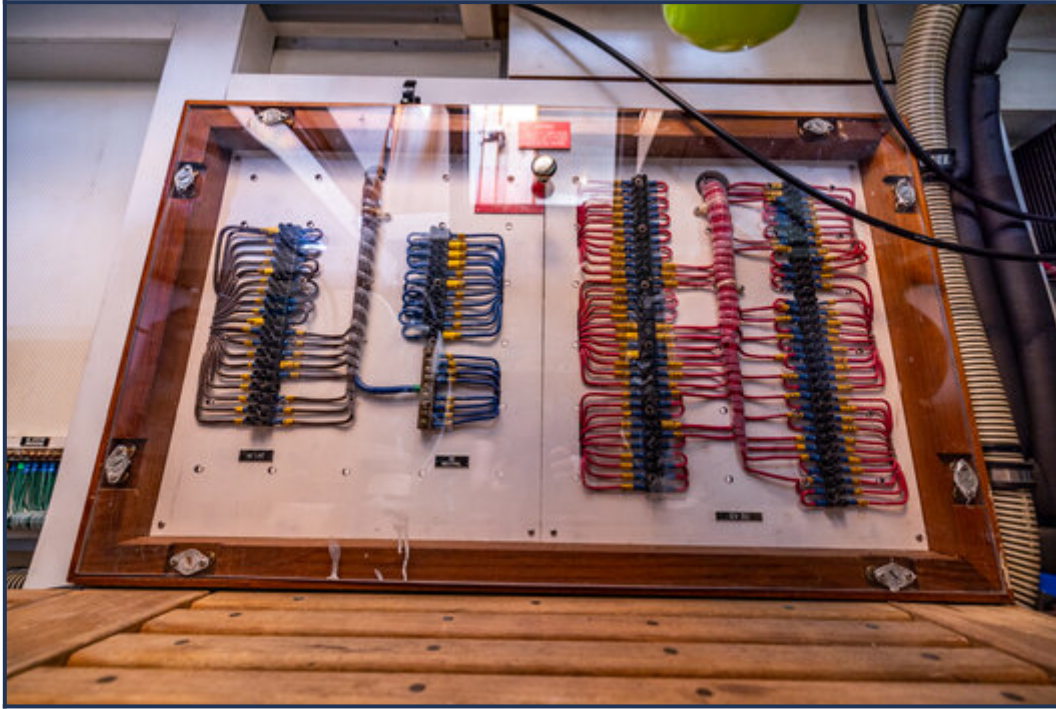








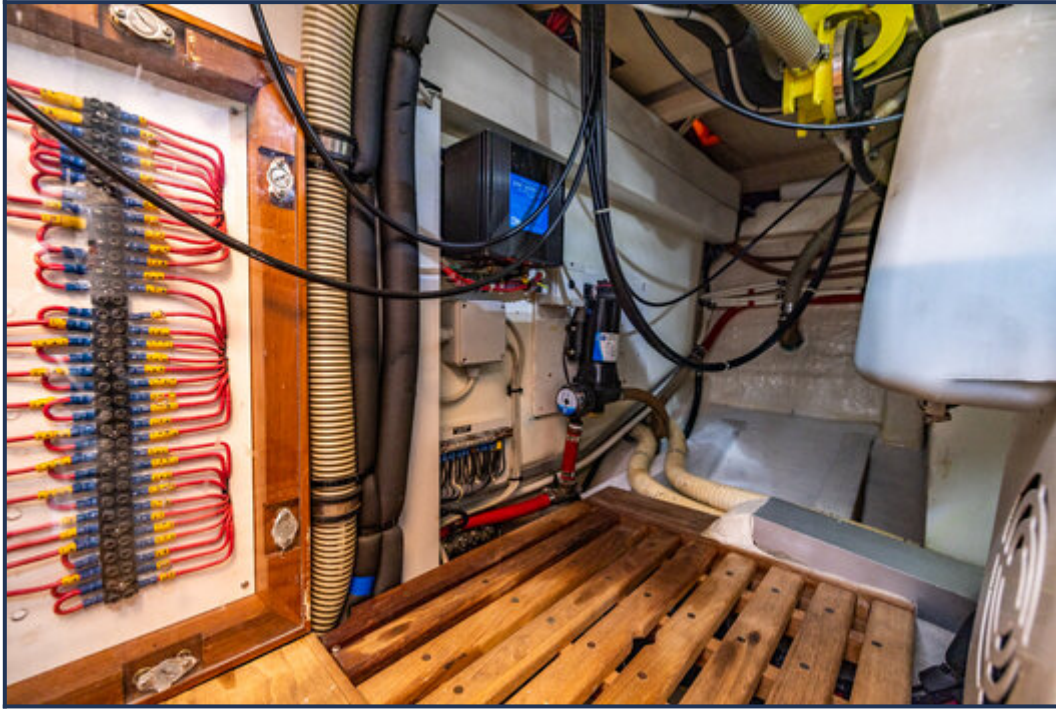












These particulars are given in good faith as supplied but cannot be guaranteed and cannot be used for contracts.