



Grand Banks 42 Classic 'Stromen'

LOA (m):	12.95 m
Beam (m):	4.17 m
Draft (m):	1.27 m
Engines:	2x 120hp ford Lehman
Cabins:	2
Homeport:	Service office
Price:	€ (not set)

STROMEN have had the necessary updates in recent years, such as a stainless steel railing with new scepters, new batteries and a Garmin system.

The ship has two times 120 Ford Lehman engines that allow the ship to catch a cruise speed of eight knots. STROMEN also has a bow screw which makes maneuvering easy.

The layout of STROMEN is as follows. The ship has two cabins, one of which has a double plus single bed. In the front of the ship is another cabin with a V-bed. In both cabins there is a toilet and shower. In the kitchen there is a three-burner cooker with an oven.



MARITEAM

- YACHTING -

MARITEAM YACHTING

De Draei 29, 8621 CZ Heeg 📍 The Netherlands 📞 Phone +31 (0) 582 889254

info@mariteamyachting.nl 📧 www.mariteamyachting.nl

Main specifications

Model:	42 Classic
LOA (m):	12.95 m
Beam (m):	4.17 m
Draft (m):	1.27 m
Year:	1981
Hull Material:	Polyester
Cabins:	2
Sleeping places:	4
Number of main engine(s):	2
Power of main engine(s) (hp):	120
Brand of main engine(s):	ford Lehman
Price:	€ (not set)
VAT status:	EU Vrijgesteld
HIN number:	GNDD0700281

General

Name :	STROMEN
Shipyard:	American Marine
Deck material:	Polyester
Superstructure material:	Polyester
Deck finish:	Teak
Window material:	Enkel
Freshwater Tank (Liter and material):	, roestvrij staal
Maximum speed (Kn):	10
Cruising speed (Kn):	8.5

Accommodation

Stove:	3 pits, gas
Refrigerator:	Coolmatic
Freezer:	Vriesvak
Single berths:	2
Double bed:	1
Toilets:	2
Showers:	2

Machinery

Port engine (Brand, type, hp, gearbox):	Ford Lehman 120pk, 2715E
Engine hours port engine:	2863
Star engine (Brand, type, hp, gearbox):	Ford Lehman 120pk, 2715E
Engine hours starboard engine:	2918
Drive (Shaft, IPS, Jet):	Schroefas
Shaft lubrication:	Watergesmeerd
Generator (Brand, type, Kw):	Onan
Bowthruster (Brand, type, elec/hyd):	1
Steering system:	Mechanisch

Electrical system

Inverter (V/W/Amp):	Mastervolt
Battery charger (V/W/Amp):	Mastervolt

Safety system

Fire extinguisher engine room:

Fireboy

Navigation system

Compass:

Garmin 7410

Gps plotter:

Garmin 7410

Radar screen:

Garmin 7410

Depth meter:

Garmin 7410

Log:

Garmin 7410

VHF:

Garmin 7410

Equipment

Anchor:

Harboureast 20kg

Windlass:

FML 800













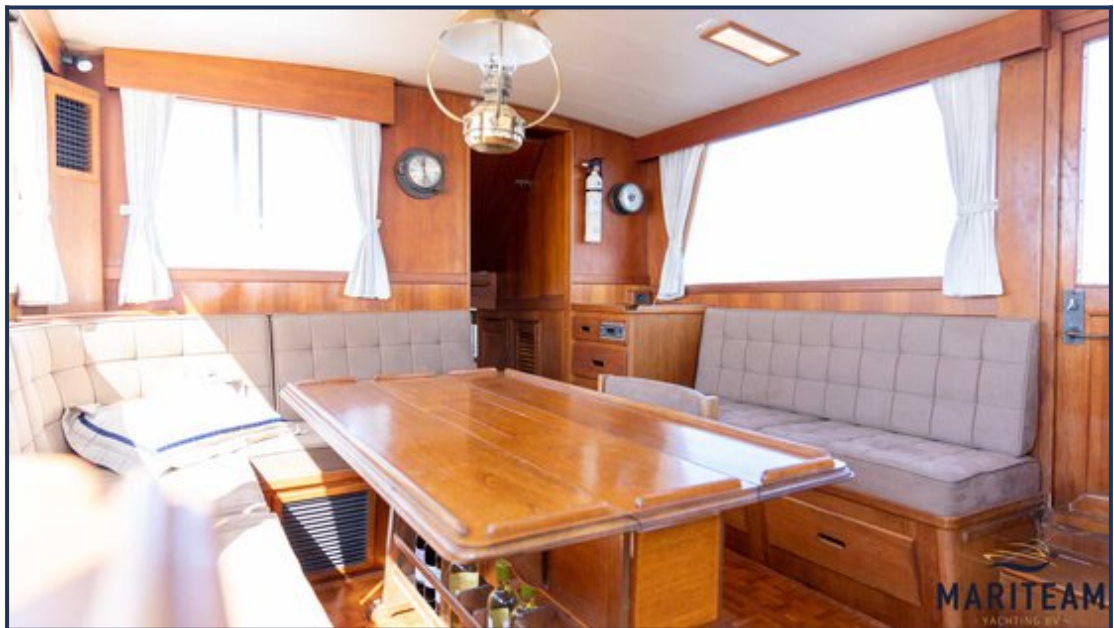




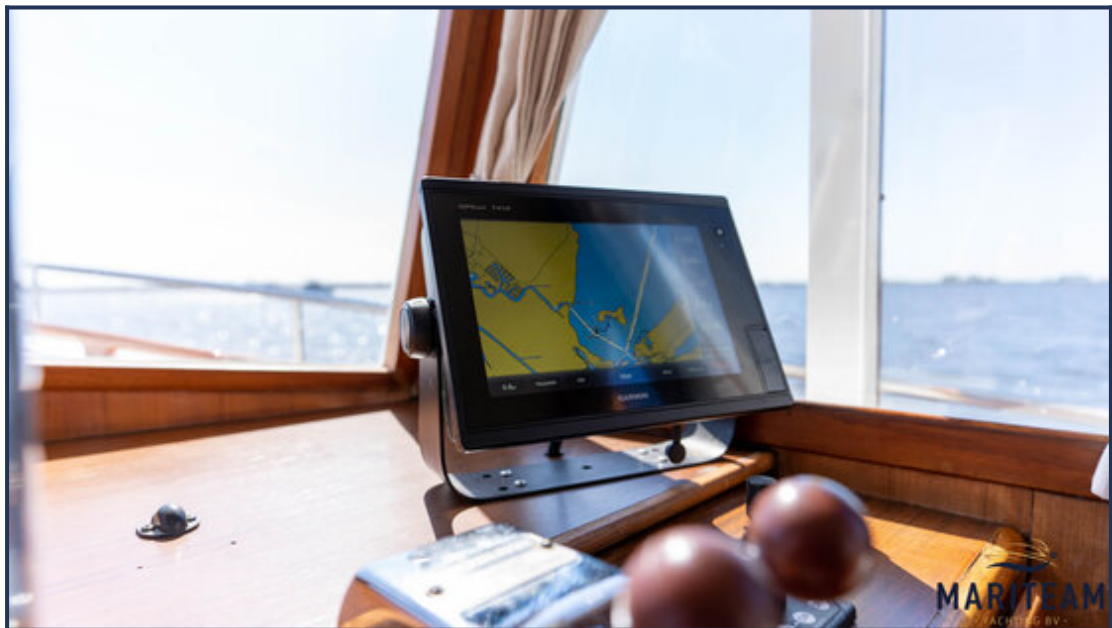






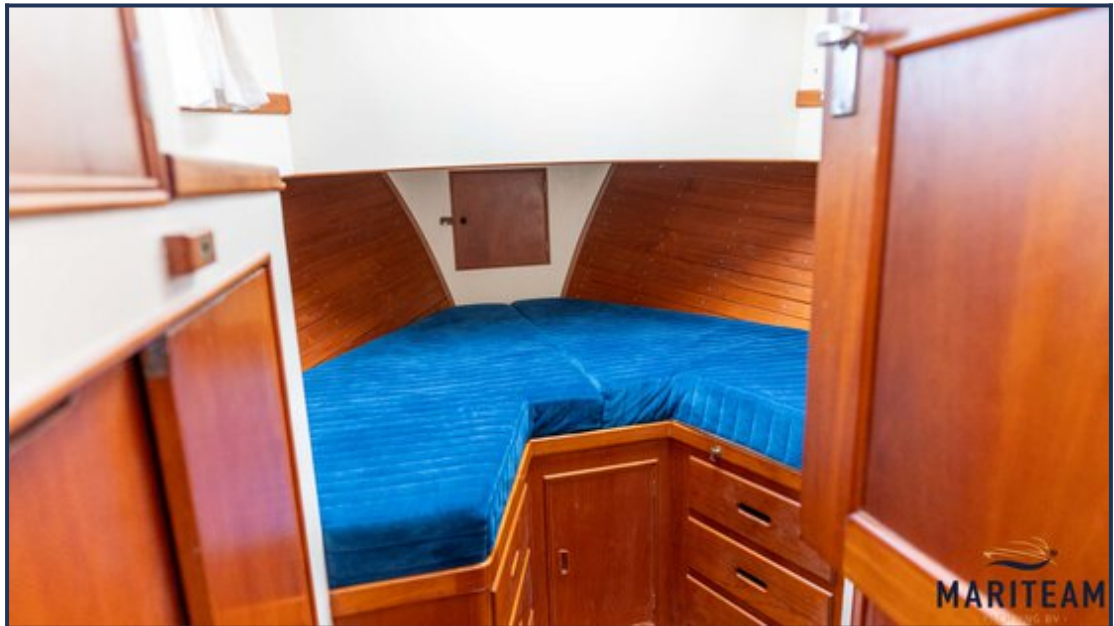


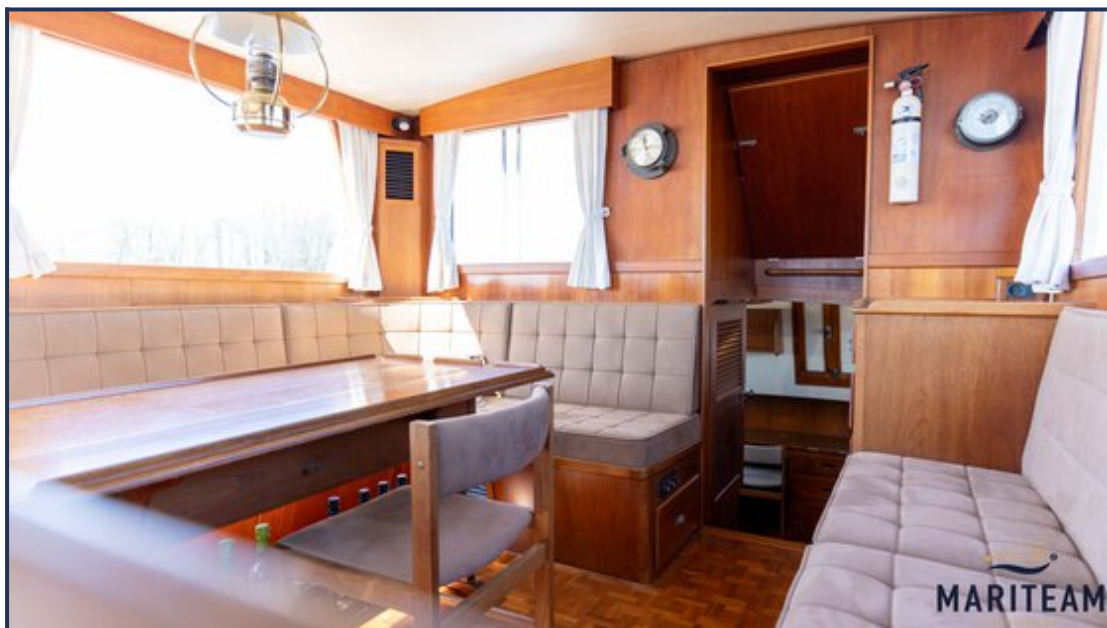




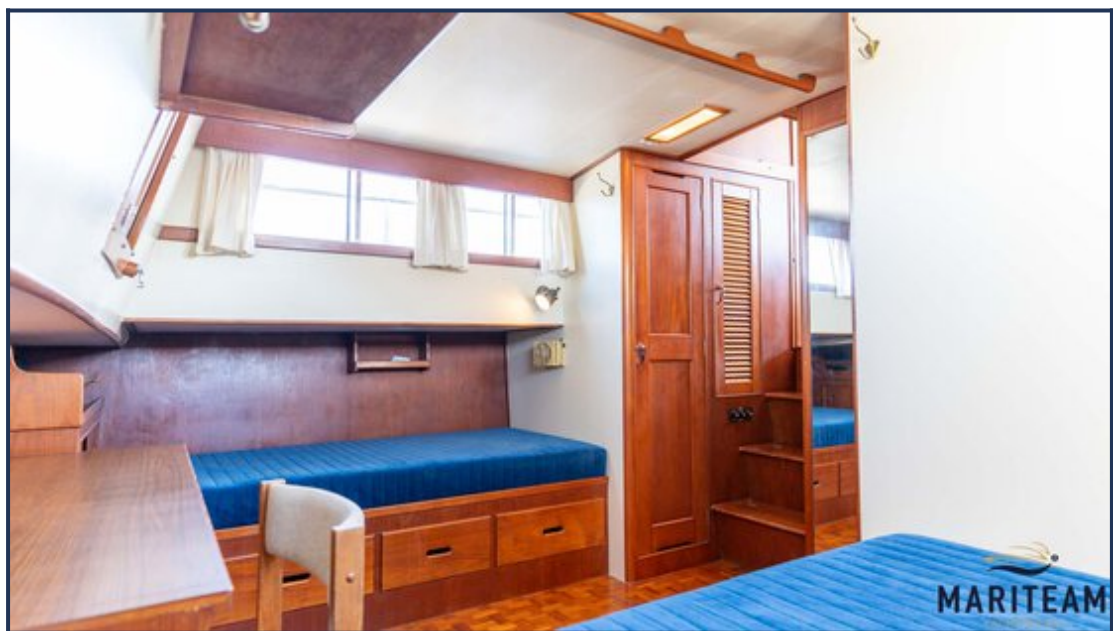




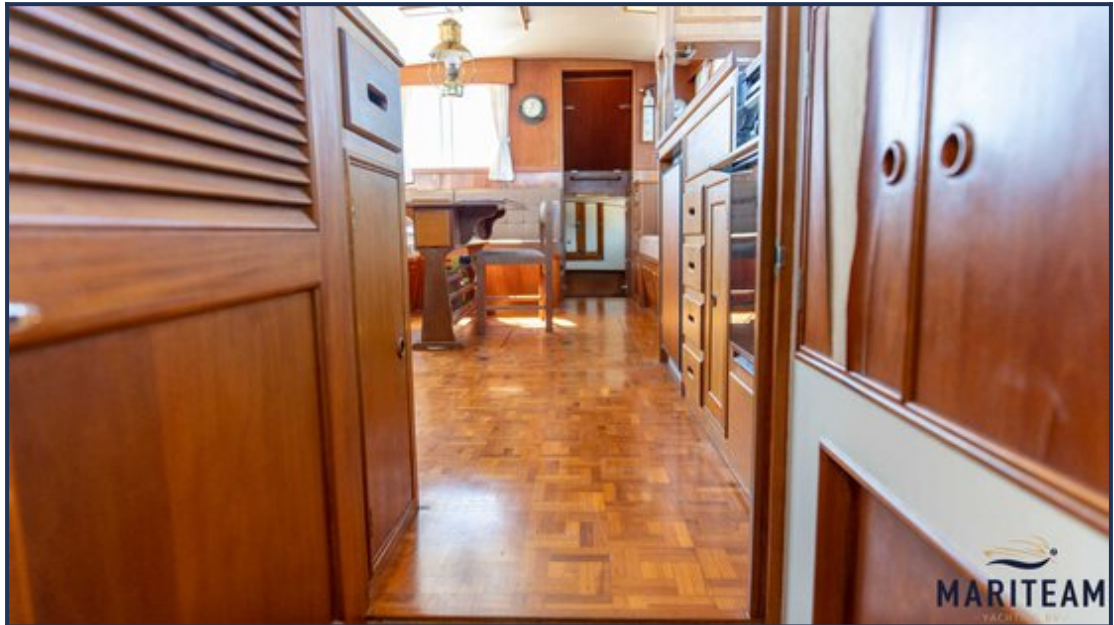




















These particulars are given in good faith as supplied but cannot be guaranteed and cannot be used for contracts.