



Grand Banks 36 Europa 'La Plume'

LOA (m):	11.23 m
Beam (m):	3.86 m
Draft (m):	1.22 m
Engines:	2x 135hp Perkins
Cabins:	2
Homeport:	Holland
Price:	€ (not set)

La plume is a well-maintained Grand Banks 36 Europe from 1998. During both summer and winter the ship lies in a covered ship house.

The ship features two times 135hp Perkins engines that give the ship a cruise speed of seven knots.

The layout of La Plume is as follows. The ship has two cabins, one of which has a double bed. The other cabin has a single bed with an extra bed that is easy to store. There is also one Toilet with a shower. In the gally up there is a three-burner cooker with a Princess oven.

At the top of the flybridge, you can enjoy the views of the Grand Banks.



MARITEAM

- YACHTING -

MARITEAM YACHTING

De Draei 29, 8621 CZ Heeg 📍 The Netherlands 📞 Phone +31 (0) 582 889254
info@mariteamyachting.nl 📧 www.mariteamyachting.nl

Main specifications

Model:	36 Europa
LOA (m):	11.23 m
Beam (m):	3.86 m
Draft (m):	1.22 m
Year:	1998
Hull Material:	Polyester
Cabins:	2
Sleeping places:	4
Number of main engine(s):	2
Power of main engine(s) (hp):	135
Brand of main engine(s):	Perkins
Price:	€ (not set)
VAT status:	BTW Betaald
HIN number:	MS-GNDC11258898

General

Name :	La Plume
Air draft (m):	3,94 with windscreen
CE-category:	A
Displacement (t):	12.2
Hull material:	Polyester
Deck material:	Polyester
Superstructure material:	Polyester
Deck finish:	Teak
Window material:	Single
Fuel tank (Litre and material):	1476L

Freshwater Tank (Liter and material):	775L
Black water tank (Litre and material):	117L
Antifouling (Year):	2020, October
Maximum speed (Kn):	9
Cruising speed (Kn):	7

Accommodation

Stove:	Seaward Princess 3 pits
Oven:	Seaward Princess
Refrigerator:	Coolmatic Mdc 110
Freezer:	MDC110 Freezer
Interior finish:	Teak
Single berths:	1 + 1
Double bed:	1
Cabins:	2
Toilets:	1, manual
Showers:	1

Machinery

Port engine (Brand, type, hp, gearbox):	Perkins Sabre, M135, 135pk, Hurt Marine HSW450
Engine hours port engine:	1713
Star engine (Brand, type, hp, gearbox):	Perkins Sabre, M135, 135pk, Hurt Marine HSW450
Engine hours starboard engine:	1718
Drive (Shaft, IPS, Jet):	Shaft drive

Prop (Number of blades, material):	3
Generator (Brand, type, Kw):	Vetus, BWG 430, 3,9
Generator hours:	68
Bowthruster (Brand, type, elec/hyd):	Yes
Fuel polishing system:	Racor industries
Electrical bilge pump:	4
Manual bilge pump:	4
Water pressure pump (Brand, model):	Paragon Junior PJR
Hot water system:	Seaward 41L
Heating system (brand, model, type):	Webasto, hot air heating
Steering system:	Hydraulic
Deckwash:	1

Electrical system

House battery (Number of battery,type, total Amp, year):	2, Are going to be replaced for new ones
Start battery (Number of battery,type, total Amp, year):	1
DC system (V) AC system (V):	12 V / 220V
Inverter (V/W/Amp):	Mastervolt 800W
Battery charger (V/W/Amp):	Professional Mariner Promatic 50-3

Safety system

Life raft:	1 x needs service
------------	-------------------

Navigation system

Compass:	Ritchie
Radar :	Raytheon RL90 + Plotter 620
Depth meter:	Raytheon
VHF:	Raymarine Ray 60 + Sailor RT4801
Autopilot:	Raytheon raypilot 650

Equipment

Anchor:	1
Windlass:	Lofrans Tigres
Gangway:	Yes
Horn:	Grover

















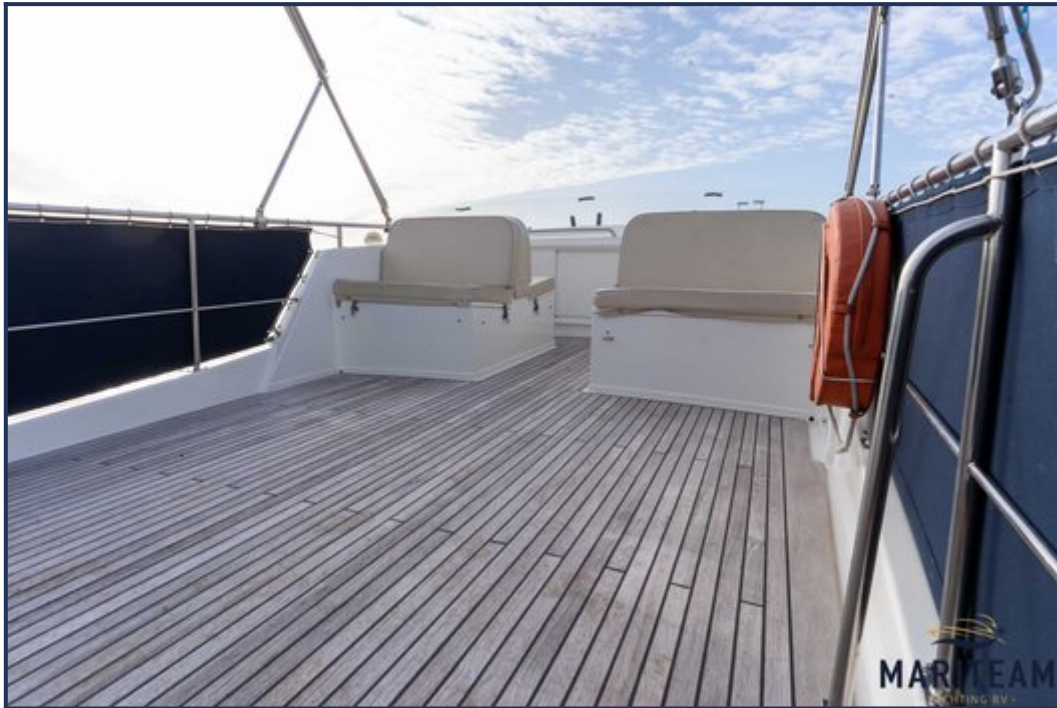








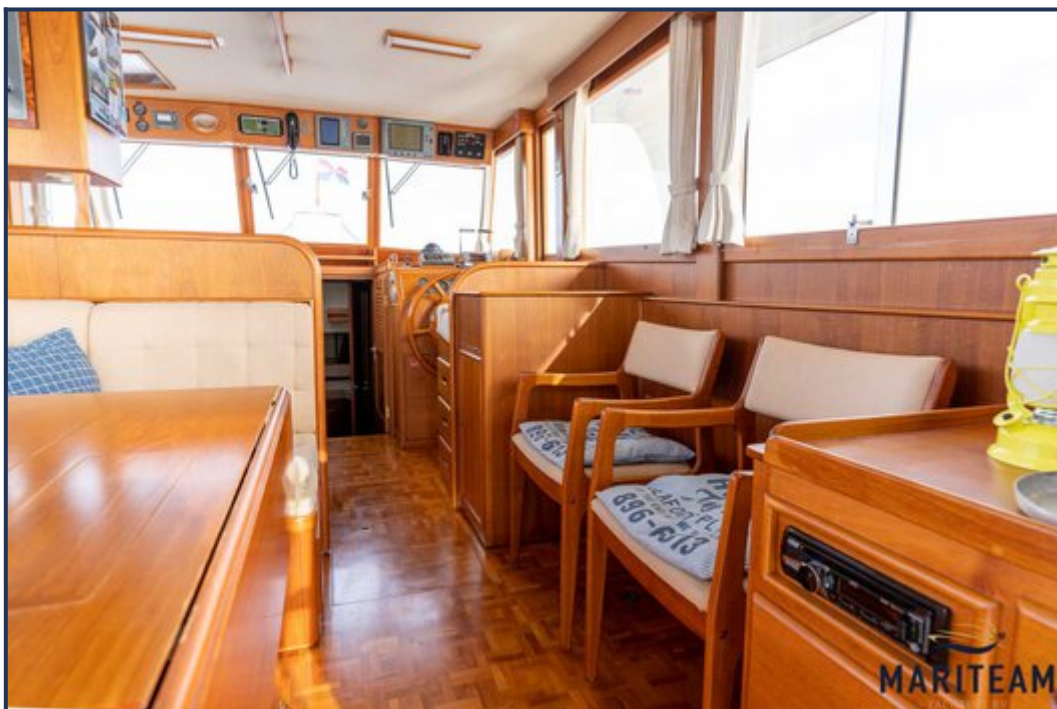




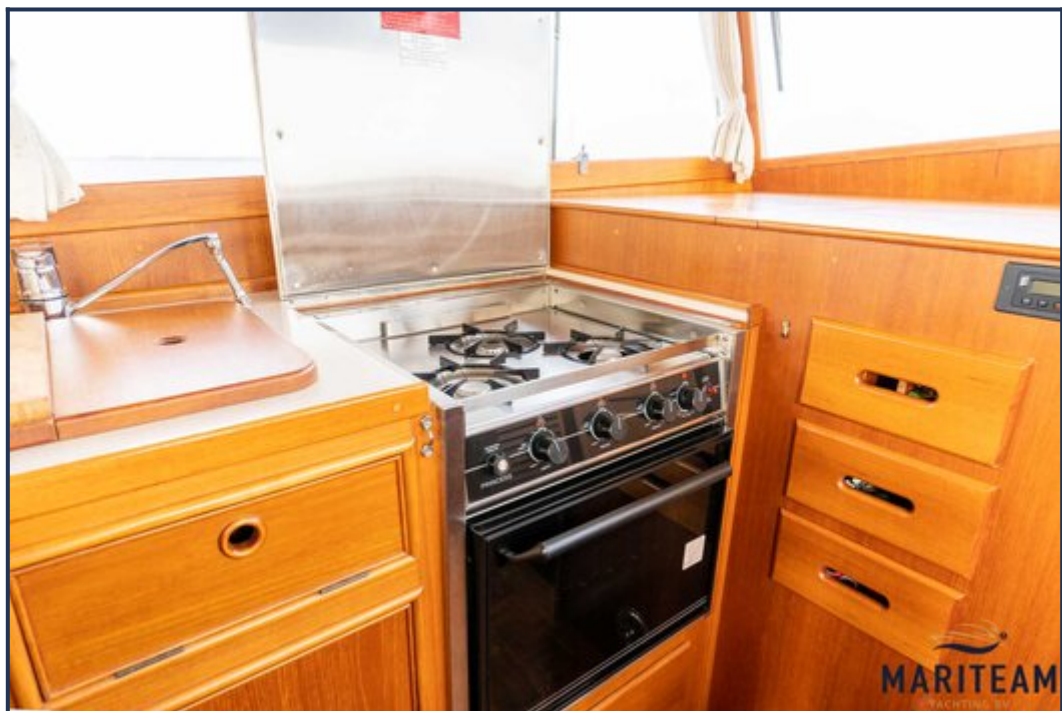
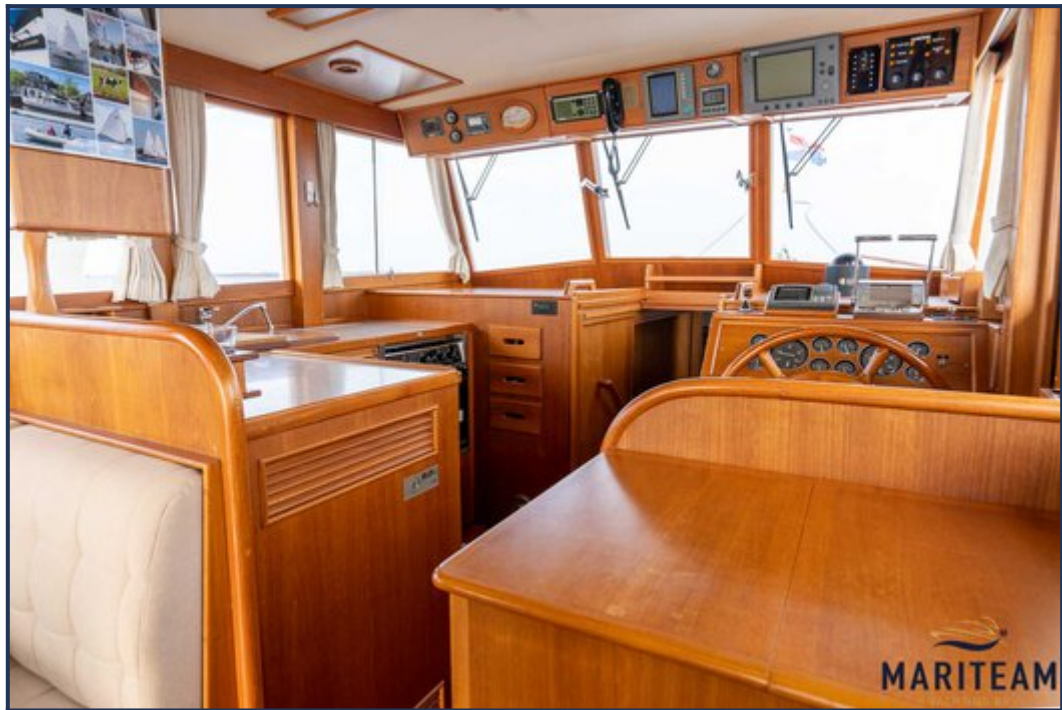


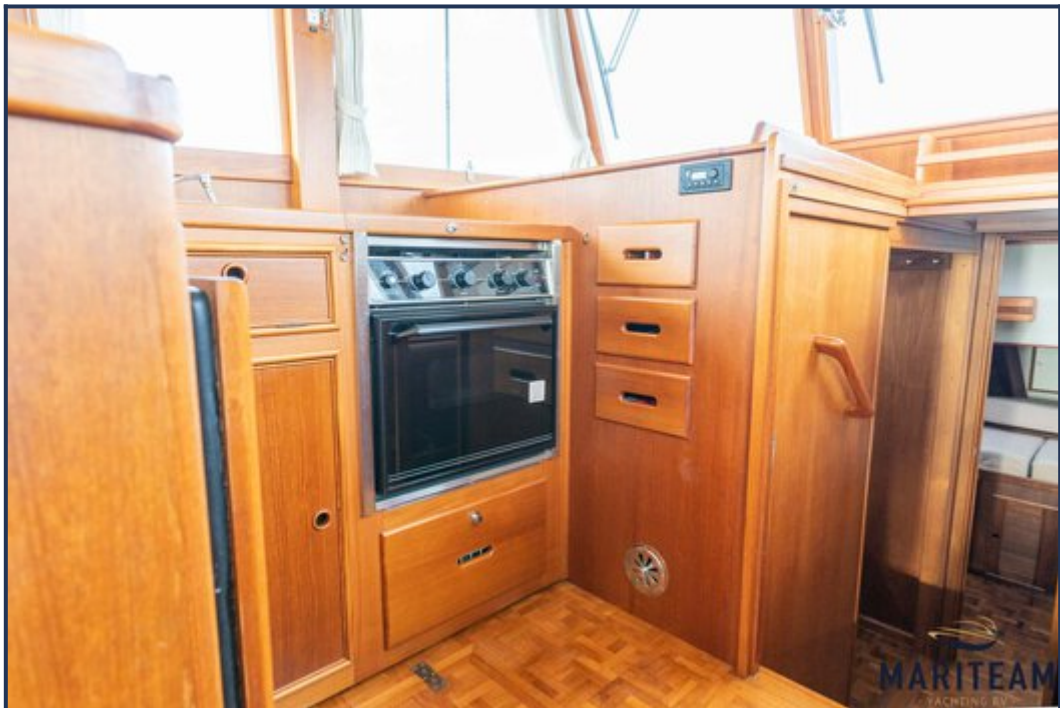
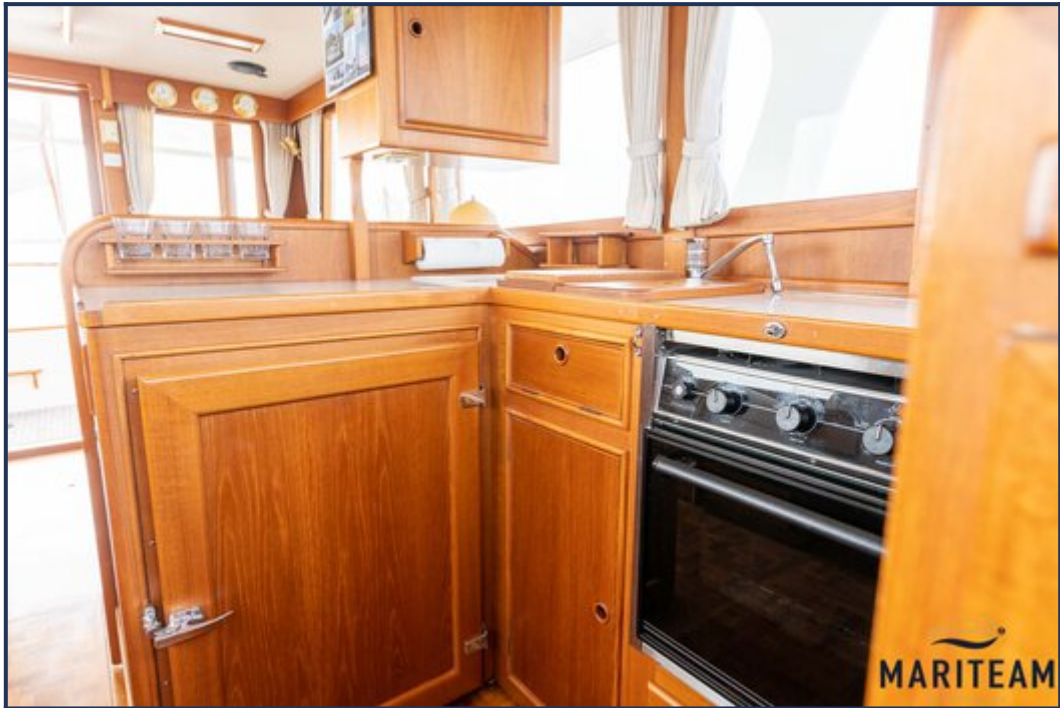






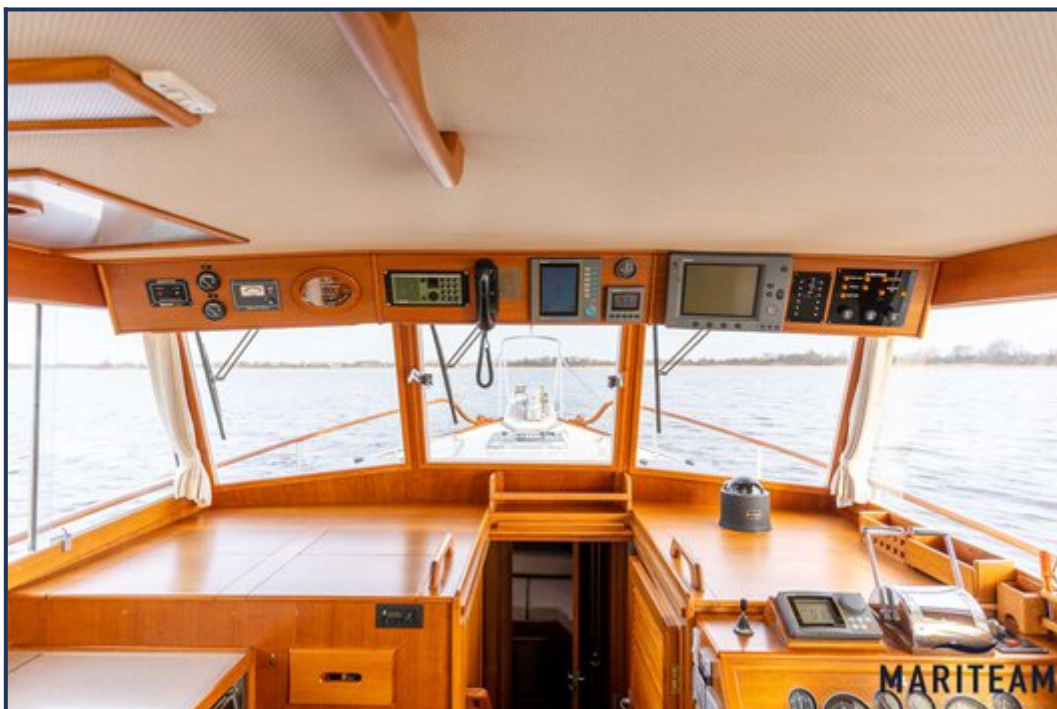












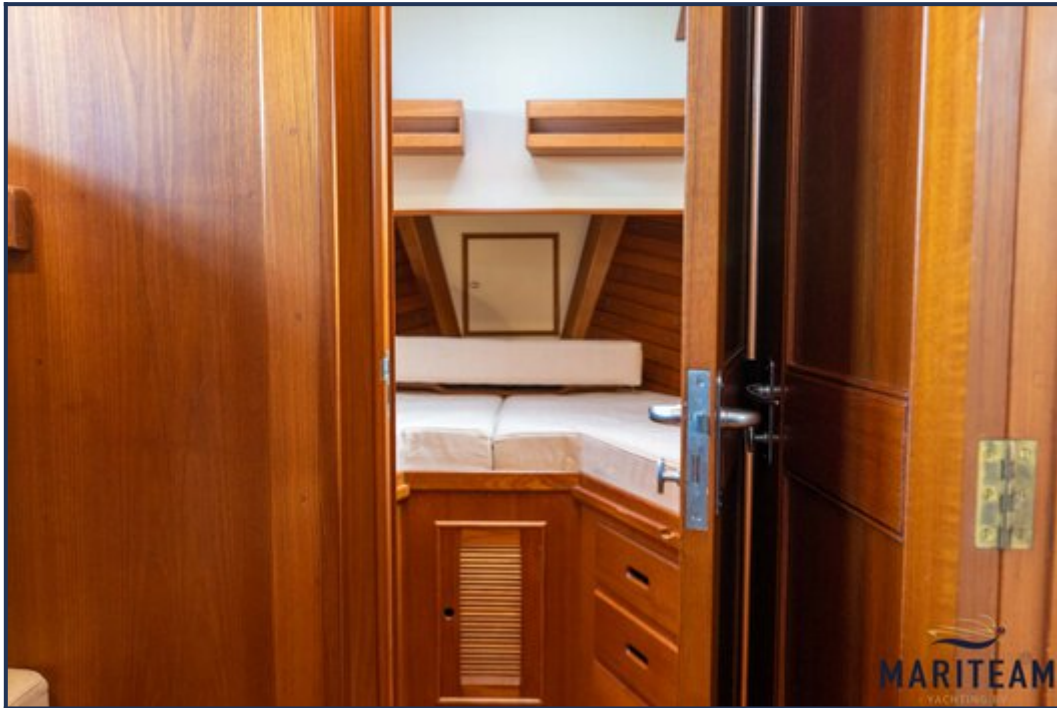








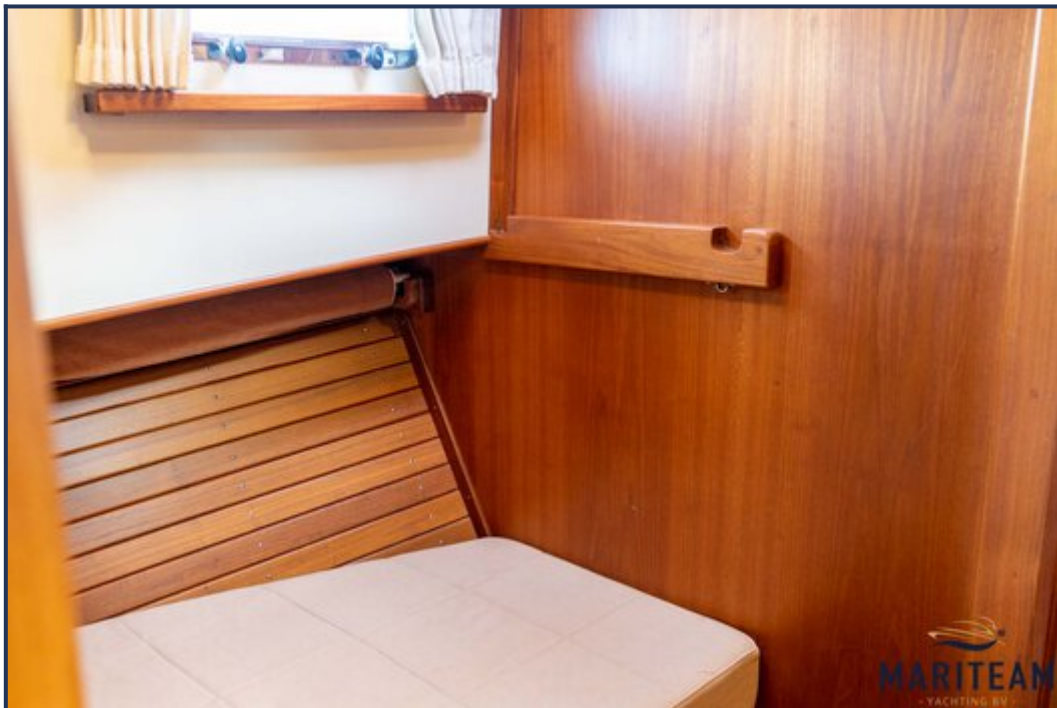








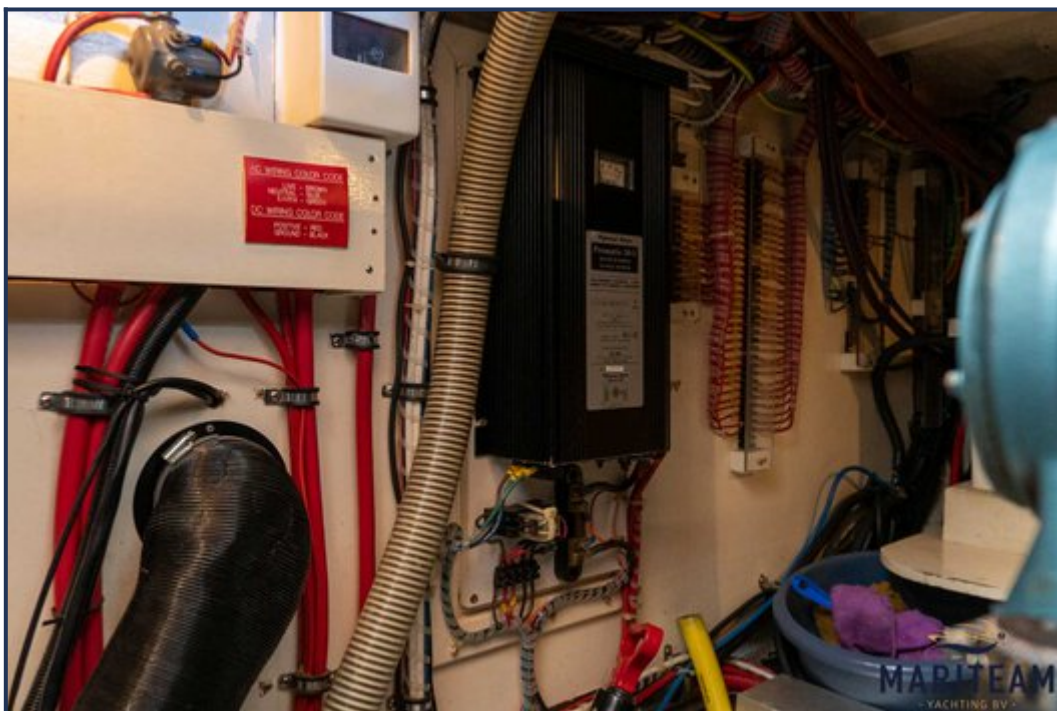


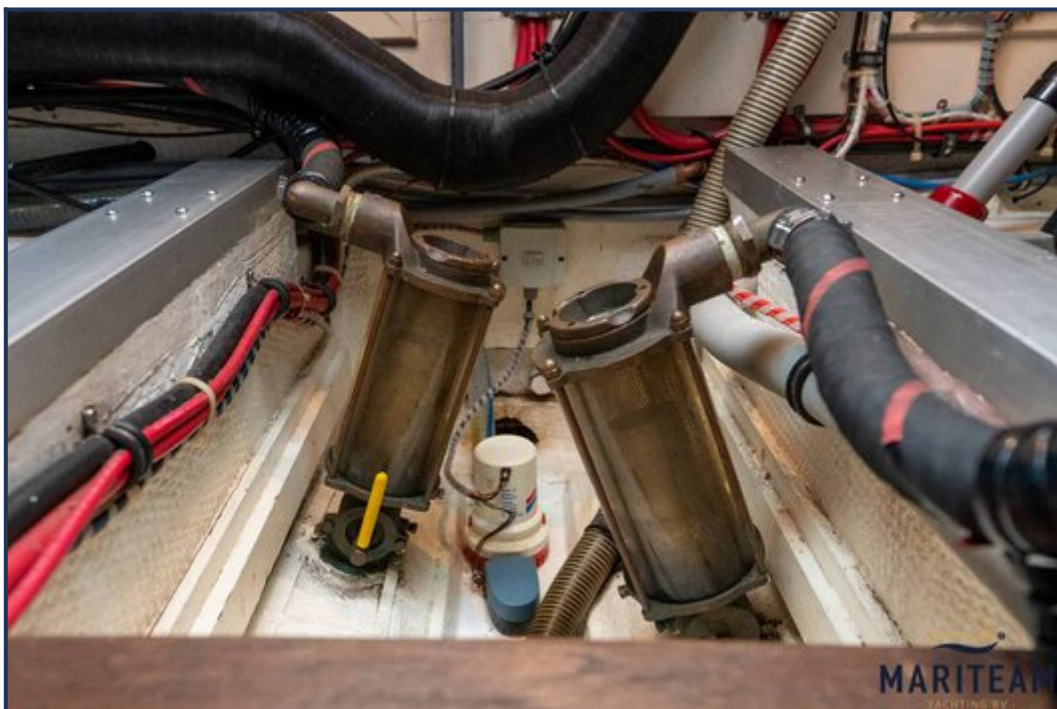


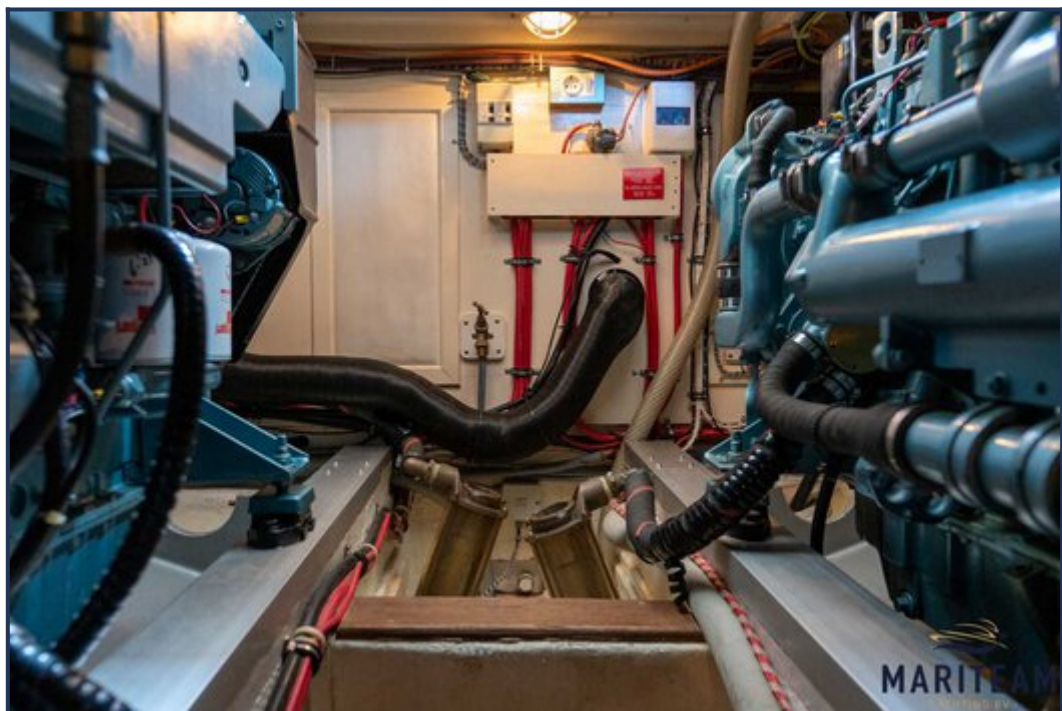




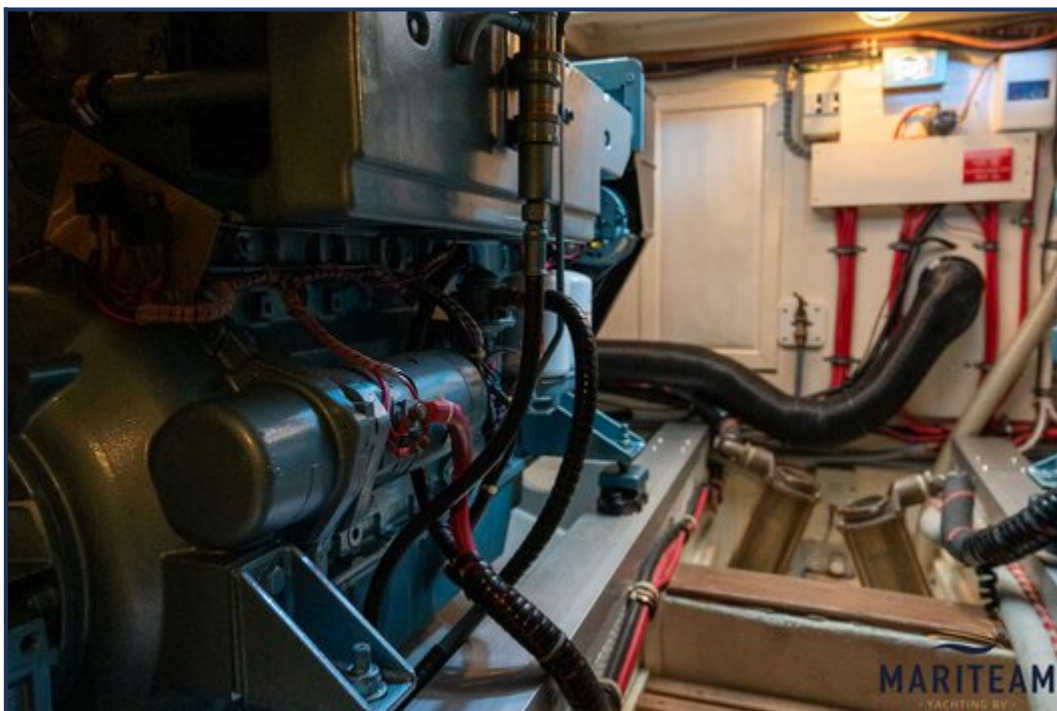


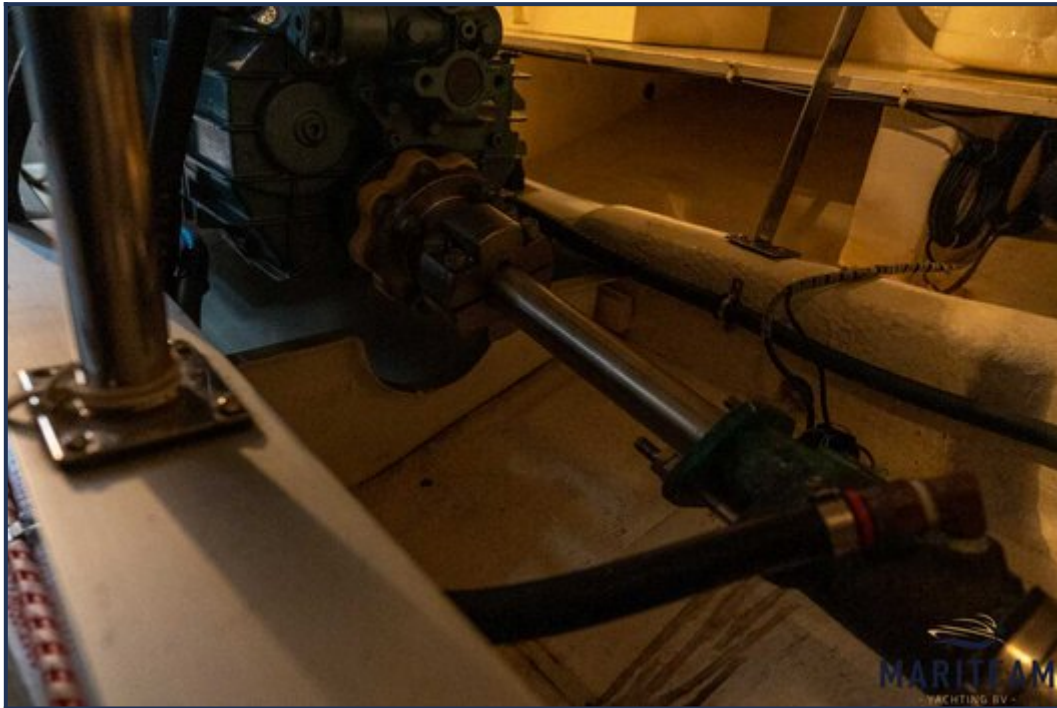












These particulars are given in good faith as supplied but cannot be guaranteed and cannot be used for contracts.