



Grand Banks 46 Europa 'Boat'

LOA (m):	14.35 m
Beam (m):	4.50 m
Draft (m):	1.33 m
Engines:	2x 375hp Caterpillar
Cabins:	2
Homeport:	Alkmaar
Price:	€ (not set)

This Grand Banks 46 is powered by two 375 HP caterpillar engines that allow the ship to achieve a maximum speed of 29 knots. The stabilizers provide extra comfort at sea and the ship has an electric passageway.

The layout of 'boat' consists the wanted gally-up with three refrigerators, two cabins, two bathrooms, two showers and two toilets.

On top of the flybridge there is a lovely corner couch with table where you can enjoy the view.

Main specifications

Model:	46 Europa
LOA (m):	14.35 m
Beam (m):	4.50 m
Draft (m):	1.33 m
Year:	1999
Hull Material:	Polyester
Cabins:	2
Sleeping places:	4
Number of main engine(s):	2
Power of main engine(s) (hp):	375
Brand of main engine(s):	Caterpillar
Price:	€ (not set)
VAT status:	Payed
HIN number:	GNDF0217F999

General

Name :	Boat
Shipyard:	American Marine
Air draft (m):	4.44
Displacement (t):	18
Hull material:	GFK
Deck material:	GFK
Superstructure material:	GFK
Deck finish:	Teak
Window material:	Safety Glass
Fuel tank (Litre and material):	2271, Steel

Freshwater Tank (Liter and material):	1136, Aluminium
Black water tank (Litre and material):	2
Maximum speed (Kn):	19
Cruising speed (Kn):	15

Accommodation

Stove:	Inventum 4 pits, gas
Refrigerator:	Bosch 12V/220V
Ice cubes maker:	U-line
Interior finish:	Teak
Double bed:	2
Cabins:	2
Toilets:	2, vacuflush
Showers:	2
Combi oven/microwave:	Panasonic

Machinery

Port engine (Brand, type, hp, gearbox):	Caterpillar, 3208TA, 375 pk, Twin Disc MG-5061-A
Engine hours port engine:	+/- 1200
Star engine (Brand, type, hp, gearbox):	Caterpillar, 3208TA, 375 pk, Twin Disc MG-5061-A
Engine hours starboard engine:	+/- 1200
Drive (Shaft, IPS, Jet):	Propellor shaft
Prop (Number of blades, material):	4, bronze
Generator (Brand, type, Kw):	Onan
Generator hours:	266

Bowthruster (Brand, type, elec/hyd):	Max Power
Electrical bilge pump:	2, Rule Industries, Rule 2000 GHP
Manual bilge pump:	1, PAR: 33965-0000
Hot water system:	Seaward S1950
Trim system:	Bennet V351
Stabilizer system:	2
Steering system:	Hydraulisch

Electrical system

Start battery (Number of battery,type, total Amp, year):	2, Varta LFD230AH
Bowthruster battery (Number of battery,type, total Amp, year):	1
DC system (V) AC system (V):	12V / 230V
Battery charger (V/W/Amp):	Professional Mariner 50-3

Safety system

Fire extinguisher engine room:	Yes
--------------------------------	-----

Navigation system

Radar :	Furuno M1832
Depth meter:	Simrad Robertson EQ40
Autopilot:	Simrad Robertson AP20

Equipment

Anchor:	1
Tender:	Tender not included
Deck shower:	1



















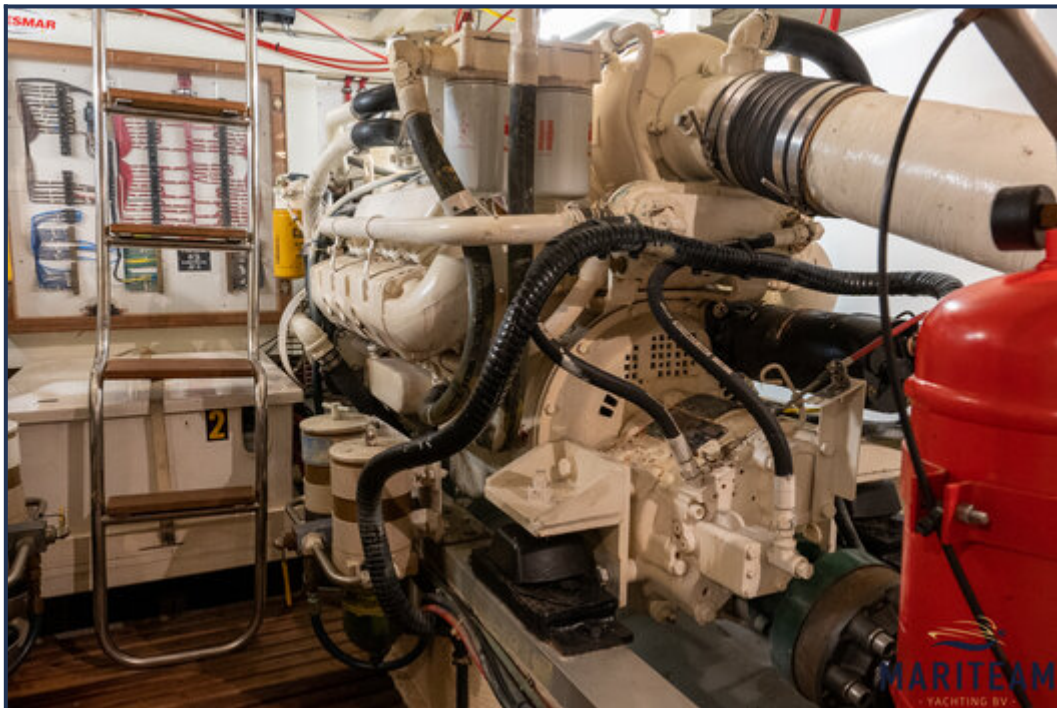




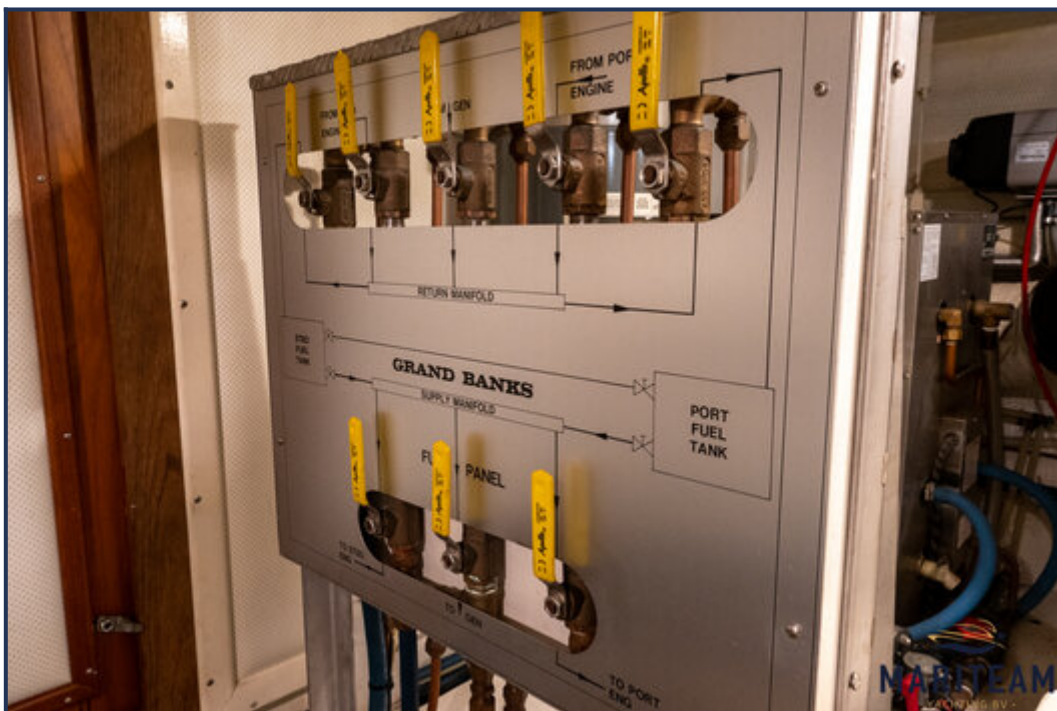
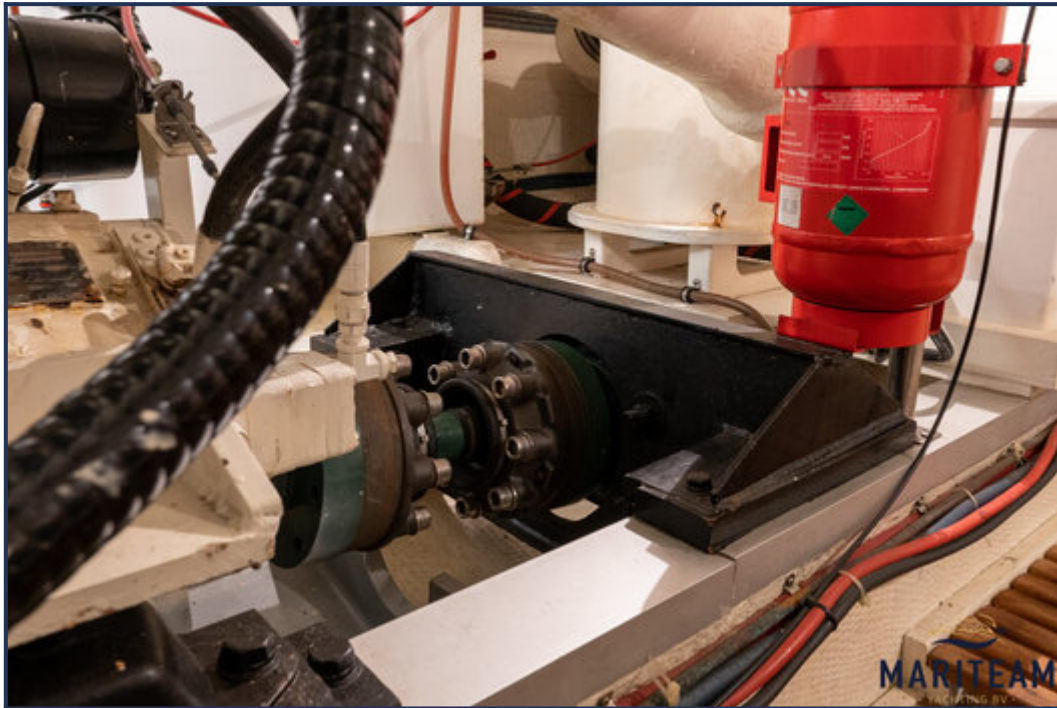


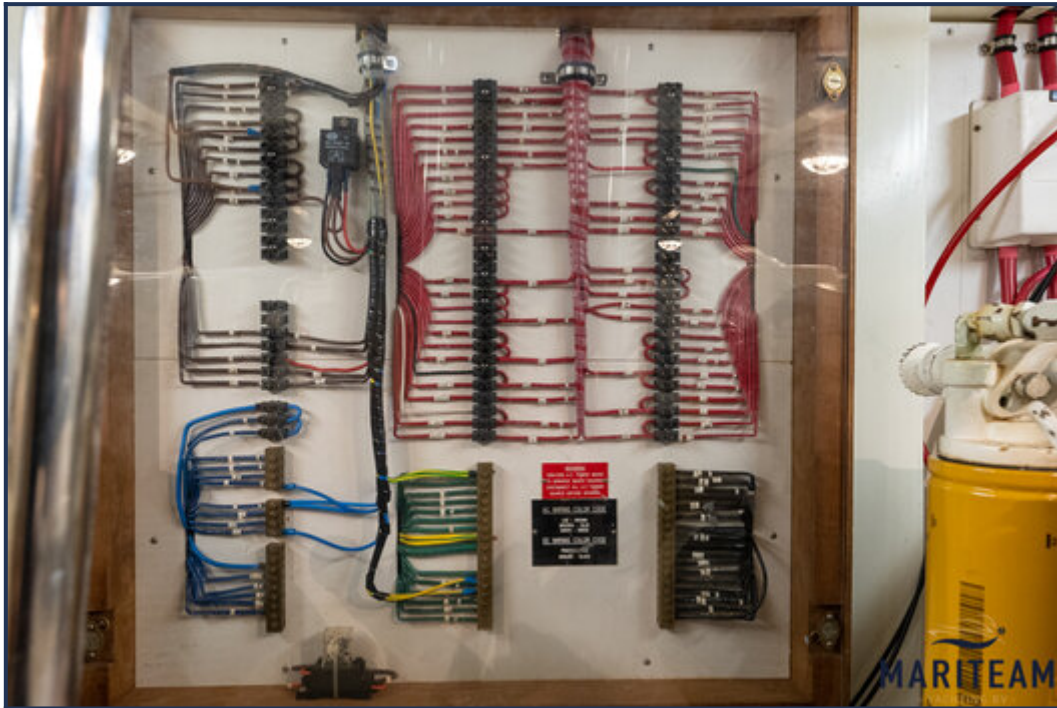






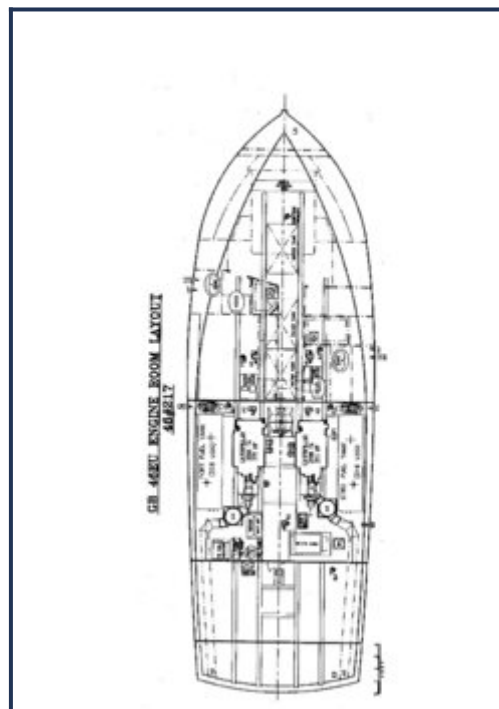


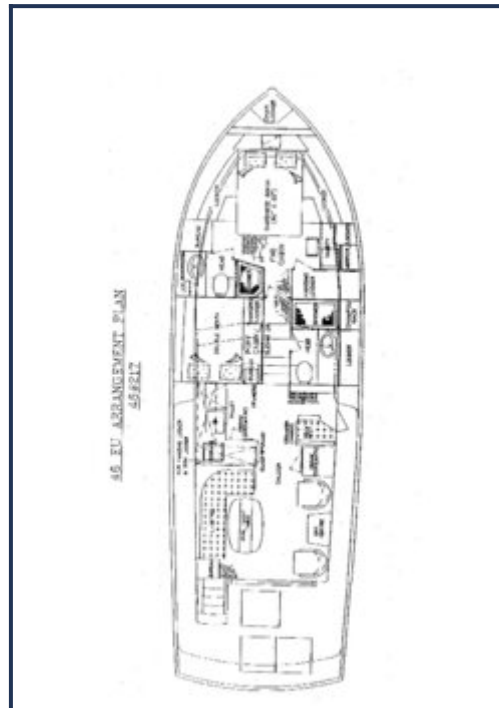












These particulars are given in good faith as supplied but cannot be guaranteed and cannot be used for contracts.